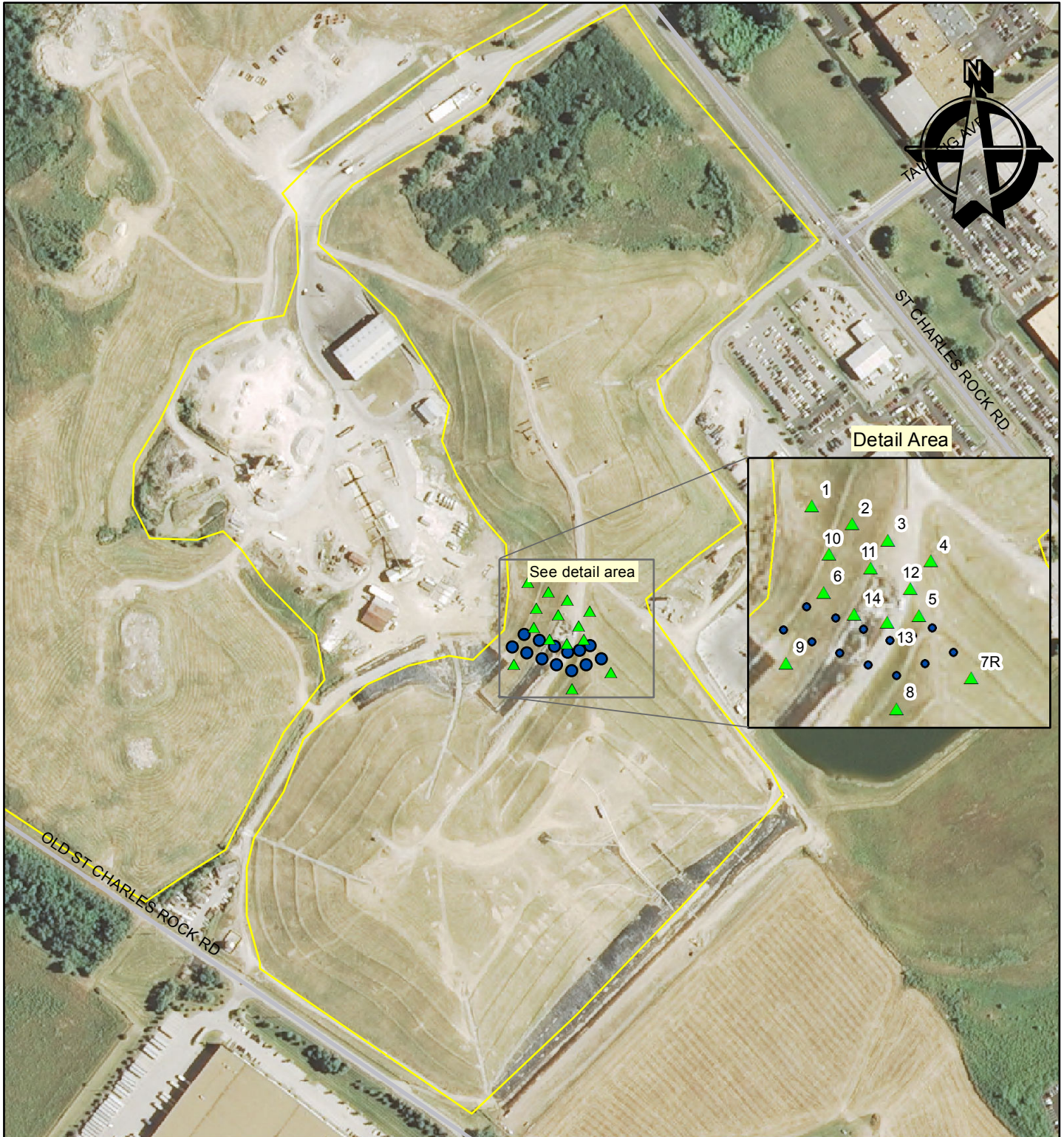


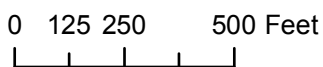
# Bridgeton Sanitary Landfill Temperature Monitoring Probes and Gas Interceptor Wells



Last Updated 5/17/2013 nrmrro



Missouri Department of Natural Resources  
Division of Environmental Quality  
Solid Waste Management Program



Although data sets used to create this map have been compiled by the Missouri Department of Natural Resources, no warranty, expressed or implied, is made by the department as to the accuracy of the data and related materials. The act of distribution shall not constitute any such warranty, and no responsibility is assumed by the department in the use of these data or related materials.

## Legend

- ▲ Temperature Monitoring Probe
- Gas Interceptor Wells
- Waste Areas (approximate)