

# BRIDGETON LANDFILL

# 2017 Q3 INFRASTRUCTURE UPDATE

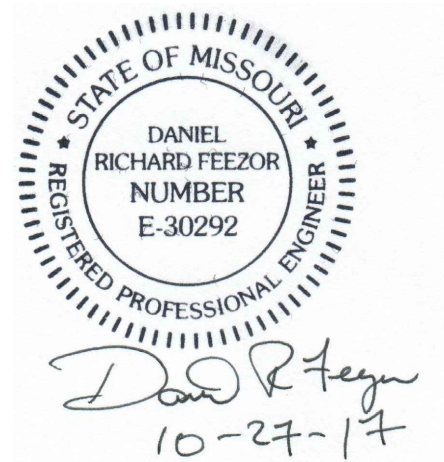
OCTOBER 2017  
PREPARED FOR:

**BRIDGETON LANDFILL, LLC**  
13570 ST. CHARLES ROCK ROAD  
BRIDGETON, MISSOURI 63044

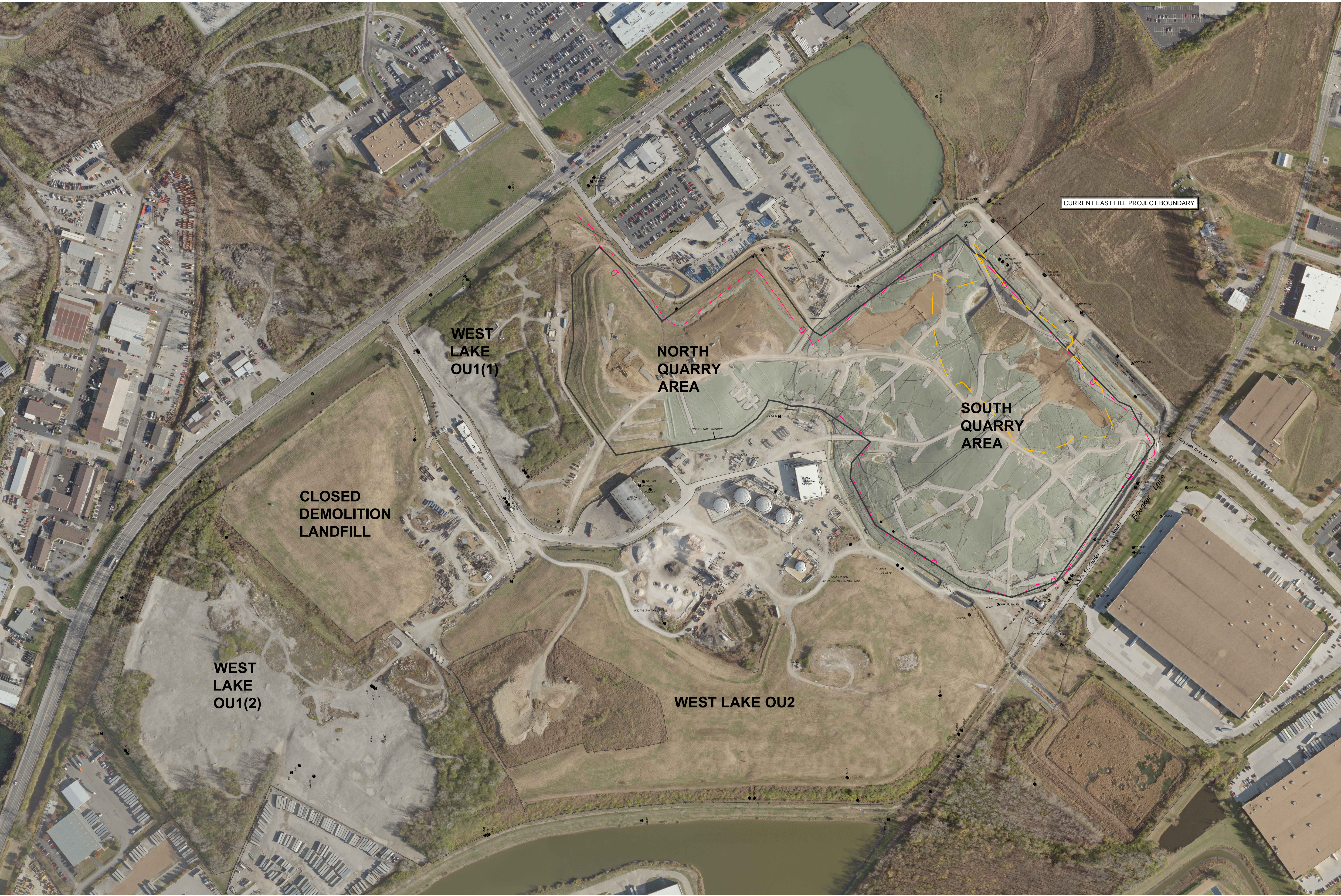


3377 HOLLENBERG DRIVE  
BRIDGETON, MO 63044  
TEL. (217) 483-3118  
FAX. (217) 483-2356

INDEX OF DRAWINGS	
	TITLE PAGE
001	FULL SITE PLAN VIEW W/ AERIAL
002	FULL SITE PLAN VIEW
003	2017 Q3 SITE INFRASTRUCTURE PLAN
004	2017 Q3 SITE INFRASTRUCTURE - UPDATES IN Q3 SHOWN IN COLOR
005	2017 Q3 SITE INFRASTRUCTURE - REMOVED IN Q3 SHOWN IN COLOR







LEGEND

SOLID WASTE BOUNDARY

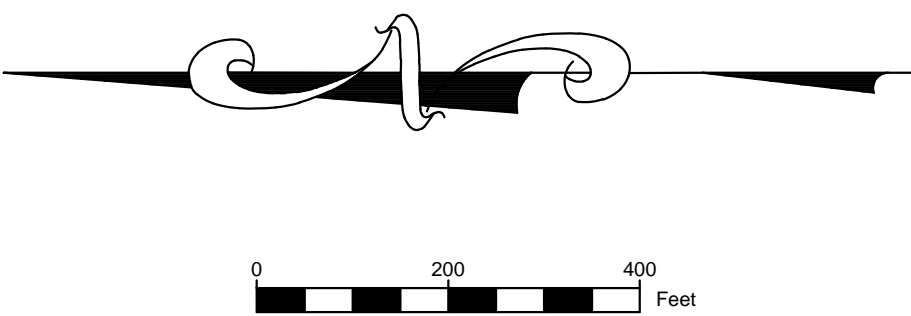
Q QUARRY WALL

X X X FENCE LINE

GMP-4 GAS MONITORING PROBE

PZ-105-SS PIEZOMETER MONITORING WELL

CURRENT EAST FILL PROJECT BOUNDARY



NOTES:

- AERIAL TOPOGRAPHY PROVIDED BY COOPER AERIAL SURVEYS CO. AND IS DATED DECEMBER 2, 2016

BRIDGETON LANDFILL, LLC  
13570 ST. CHARLES ROCK ROAD  
BRIDGETON, MISSOURI 63044

BRIDGETON LANDFILL  
2017 Q3 INFRASTRUCTURE  
UPDATE

Engineering for a Better World

FEEZOR

ENGINEERING, INC.

OCTOBER 2017  
DESIGNED BY: AMR  
APPROVED BY: DRF

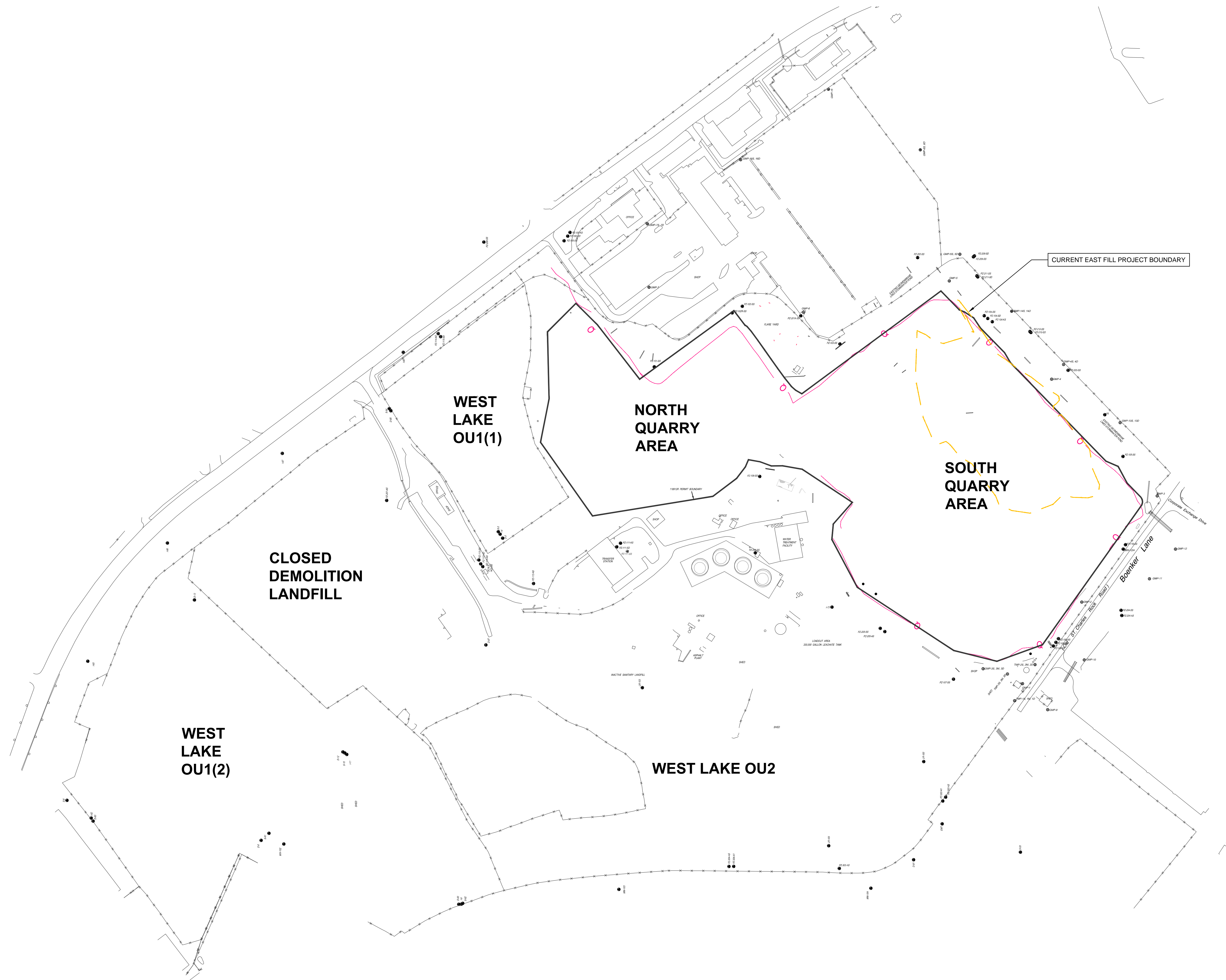
REVISION  
DATE

DRAWING NO.:  
  
**001**

FULL SITE PLAN VIEW W/ AERIAL

PROJECT NO: BT-130 | FILE PATH: D:\projects\Feezor\Engineering\BT-130 - 2017 Q3 Infrastructure Update





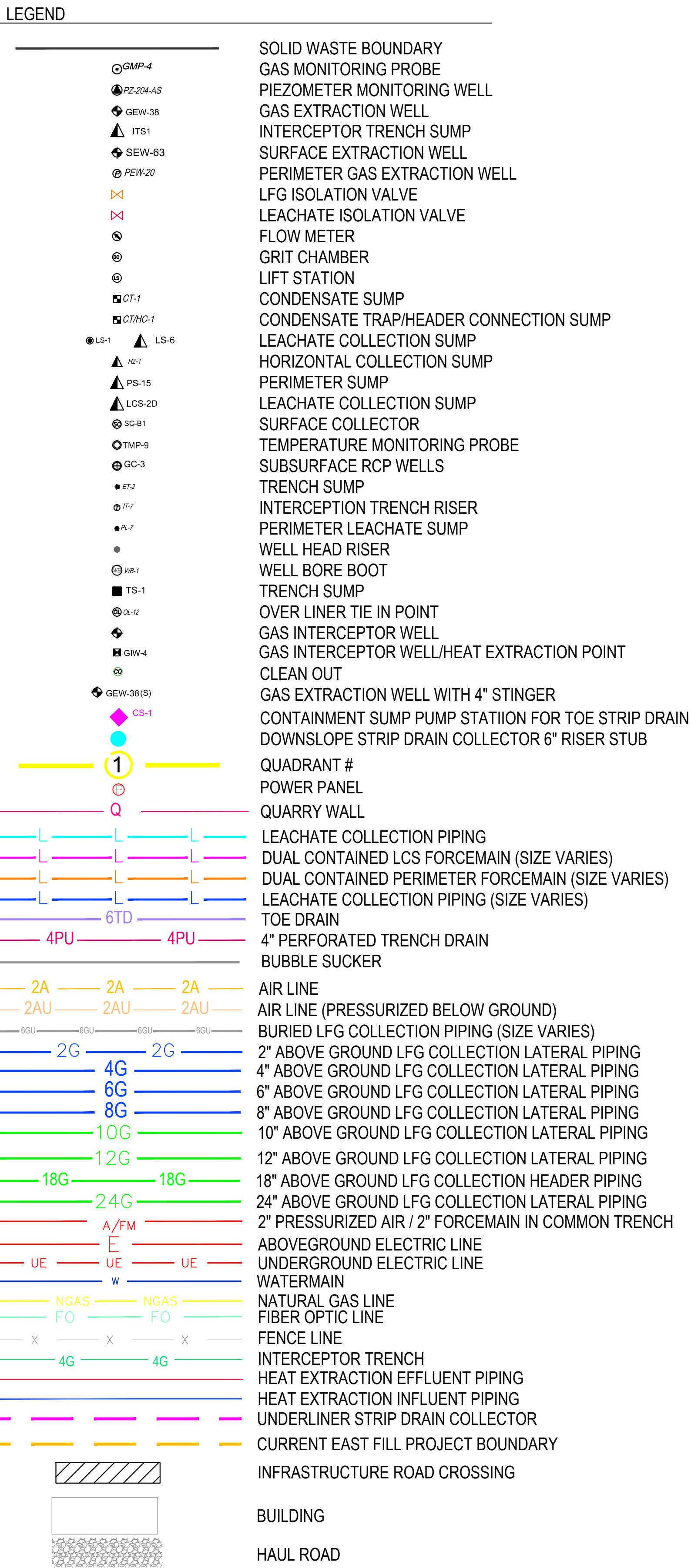
LEGEND	
	SOLID WASTE BOUNDARY
	QUARRY WALL
	FENCE LINE
	GAS MONITORING PROBE
	PIEZOMETER MONITORING WELL
	CURRENT EAST FILL PROJECT BOUNDARY


NOTES:

- AERIAL TOPOGRAPHY PROVIDED BY COOPER AERIAL SURVEYS CO. AND IS DATED DECEMBER 2, 2016

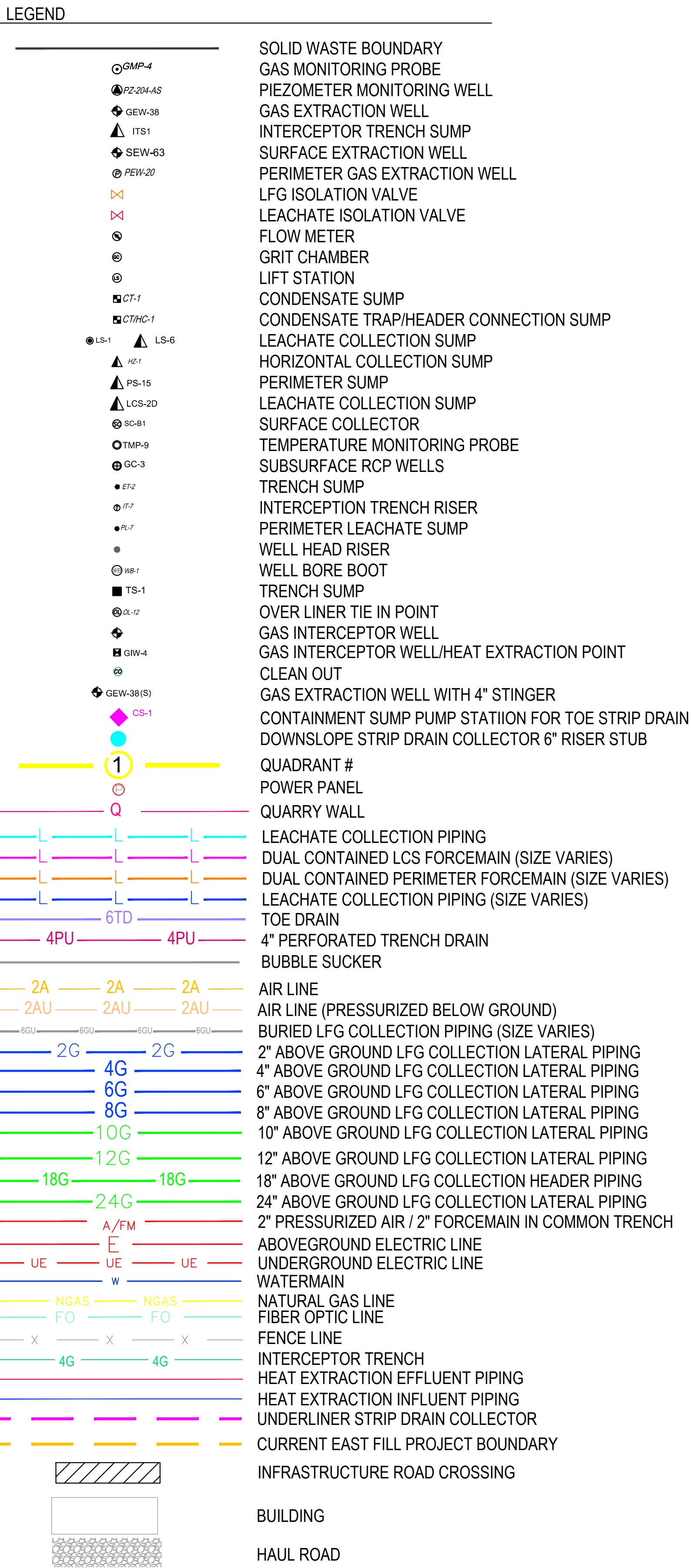
BRIDGETON LANDFILL, LLC 13570 ST. CHARLES ROCK ROAD BRIDGETON, MISSOURI 63044	BRIDGETON LANDFILL 2017 Q3 INFRASTRUCTURE UPDATE	 Engineering for a Better World FEEZOR ENGINEERING, INC.	OCTOBER 2017 DESIGNED BY: AMR APPROVED BY: DRF	DRAWING NO.:
FULL SITE PLAN VIEW			REVISION	DATE
PROJECT NO: BT-130		FILE PATH: C:\Desktop\Project Engineering\BT-130 - 2017 Q3 Infrastructure Update		







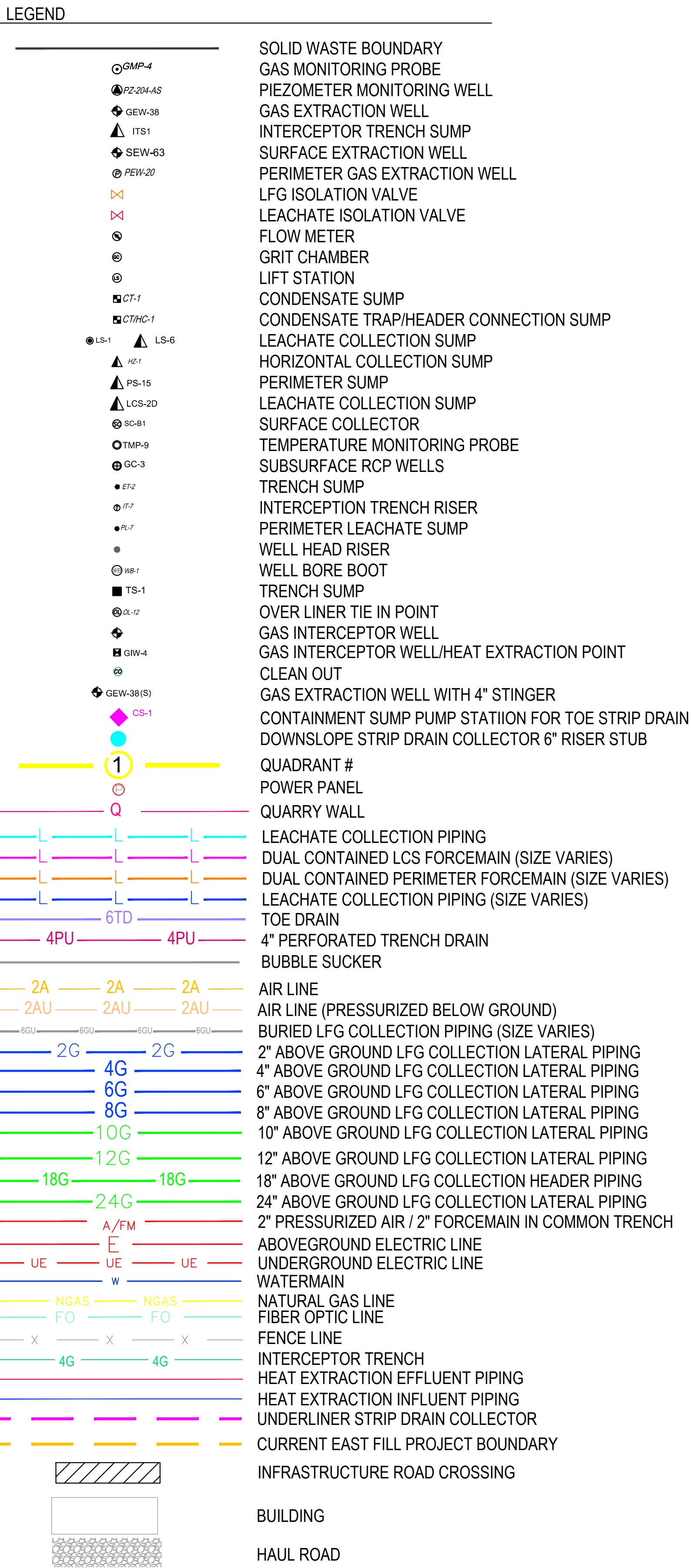
NOTES: AERIAL TOPOGRAPHY PROVIDED BY COOPER AERIAL SURVEYS CO. AND IS DATED DECEMBER 2, 2016				DRAWING NO.:	
BRIDGETON LANDFILL, LLC 13570 ST. CHARLES ROCK ROAD BRIDGETON, MISSOURI 63044		BRIDGETON LANDFILL 2017 Q3 INFRASTRUCTURE UPDATE		OCTOBER 2017 DESIGNED BY: AMR APPROVED BY: DRF	
2017 Q3 SITE INFRASTRUCTURE				003	
PROJECT NO. BT-130		FILE PATH C:\pawson\pawson\B07-130_2017 Q3 Infrastructure\Submittal			
				REVISION      DATE	







NOTES: AERIAL TOPOGRAPHY PROVIDED BY COOPER AERIAL SURVEYS CO. AND IS DATED DECEMBER 2, 2016				DRAWING NO.:	
BRIDGETON LANDFILL, LLC 13570 ST. CHARLES ROCK ROAD BRIDGETON, MISSOURI 63044		BRIDGETON LANDFILL 2017 Q3 INFRASTRUCTURE UPDATE		OCTOBER 2017 DESIGNED BY: AMR APPROVED BY: DRF	
2017 Q3 SITE INFRASTRUCTURE (UPDATES IN Q3 SHOWN IN COLOR)		 <b>FEEZOR</b> ENGINEERING, INC.			
PROJECT NO: BT-130		FILE PATH: C:\004000 Feesee Engineering\BT-130 - 2017 Q3 Infrastructure, Submittal		REVISION      DATE	





NOTES:

- AERIAL TOPOGRAPHY PROVIDED BY COOPER AERIAL SURVEYS CO. AND IS DATED DECEMBER 2, 2016

BRIDGETON LANDFILL, LLC 13570 ST. CHARLES ROCK ROAD BRIDGETON, MISSOURI 63044		BRIDGETON LANDFILL 2017 Q3 INFRASTRUCTURE UPDATE		 OCTOBER 17 DESIGNED BY: AMR APPROVED BY: DEF		DRAWING NO.:
<b>2017 Q3 SITE INFRASTRUCTURE (REMOVED IN Q3 SHOWN IN RED)</b>				 Engineering for a Better World <b>FEEZOR</b> ENGINEERING, INC.		<b>005</b>
PROJECT NO.: BT-130   FILE PATH: C:\projects\Feezor\Engineering\BT - 2017 Q3 Infrastructure Update				REVISION      DATE		

005