

Daily Flare Monitoring Data - Bridgeton Landfill
7/1/2014 - 12/31/2014

Date	Average Device Flow (scfm)				Total Avg. Flow (scfm)
	Candlestick Flare (FL-100)	Candlestick Flare (FL-140)	Candlestick Flare (FL-120)	E. Aux. Candlestick Flare	
8/7/2012	1,867				5,689
8/8/2012	1,886				5,802
8/9/2012	1,885				5,603
8/10/2012	1,897				5,679
8/11/2012	1,886				5,483
8/12/2012	1,770				4,770
8/13/2012	1,790				5,460
8/14/2012	1,800				5,650
8/15/2012	1,771				5,223
8/16/2012	1,766				5,860
8/17/2012	1,738				5,702
8/18/2012	1,791				5,687
8/19/2012	1,753				5,433
8/20/2012	1,731				5,481
8/21/2012	1,773				5,592
8/22/2012	1,835				5,482
8/23/2012	1,869				5,723
8/24/2012	1,976				5,998
8/25/2012	1,967				5,922
8/26/2012	2,009				5,934
8/27/2012	1,960				5,871
8/28/2012	1,993				5,990
8/29/2012	2,208				6,109
8/30/2012	2,192				6,094
8/31/2012	2,169				6,243
9/1/2012	2,209				6,260
9/2/2012	2,159				6,143
9/3/2012	2,144				6,294
9/4/2012	2,156				6,248
9/5/2012	2,174				6,149
9/6/2012	2,144				6,322
9/7/2012	2,170				6,527
9/8/2012	2,192				6,143
9/9/2012	2,178				6,313
9/10/2012	2,154				6,296
9/11/2012	2,203				6,202
9/12/2012	2,175				6,331
9/13/2012	2,199				5,838
9/14/2012	2,194				5,847
9/15/2012	2,093				6,743
9/16/2012	1,980				6,087
9/17/2012	1,934				6,384
9/18/2012	2,003				6,599
9/19/2012	1,902				6,337
9/20/2012	1,859				6,493
9/21/2012	2,139				6,142

Daily Flare Monitoring Data - Bridgeton Landfill
7/1/2014 - 12/31/2014

Date	Average Device Flow (scfm)				Total Avg. Flow (scfm)
	Candlestick Flare (FL-100)	Candlestick Flare (FL-140)	Candlestick Flare (FL-120)	E. Aux. Candlestick Flare	
9/22/2012	2,133				5,909
9/23/2012	2,167				5,739
9/24/2012	1,316				6,102
9/25/2012	2,217				6,968
9/26/2012	2,158				6,611
9/27/2012	2,194				6,499
9/28/2012	2,314				5,232
9/29/2012	2,306				6,506
9/30/2012	2,313				6,173
10/1/2012	2,212				6,715
10/2/2012	2,242				6,215
10/3/2012	1,930				9,113
10/4/2012	1,890				7,242
10/5/2012	1,836				7,508
10/6/2012	1,729				7,300
10/7/2012	1,719				7,878
10/8/2012	1,625				7,353
10/9/2012	1,715				7,134
10/10/2012	1,516				5,843
10/11/2012	1,397				6,344
10/12/2012	1,324				6,671
10/13/2012	1,856				6,868
10/14/2012	2,102				6,141
10/15/2012	1,975				6,575
10/16/2012	2,040				6,880
10/17/2012	1,885				7,103
10/18/2012	1,892				5,049
10/19/2012	1,855				5,650
10/20/2012	1,785				6,745
10/21/2012	1,990				5,150
10/22/2012	1,337				4,366
10/23/2012	1,436				6,948
10/24/2012	1,310				4,995
10/25/2012	1,623				7,360
10/26/2012	1,334				6,446
10/27/2012	1,645				6,045
10/28/2012	1,472				5,919
10/29/2012	1,270				6,170
10/30/2012	1,460				6,652
10/31/2012	1,261				5,795
11/1/2012	1,071				5,616
11/2/2012	1,050				5,670
11/3/2012	988				5,821
11/4/2012	1,188				6,144
11/5/2012	1,147				5,524
11/6/2012	1,040				5,645

Daily Flare Monitoring Data - Bridgeton Landfill
7/1/2014 - 12/31/2014

Date	Average Device Flow (scfm)				Total Avg. Flow (scfm)
	Candlestick Flare (FL-100)	Candlestick Flare (FL-140)	Candlestick Flare (FL-120)	E. Aux. Candlestick Flare	
11/7/2012	1,200				5,690
11/8/2012	1,456				6,254
11/9/2012	1,547				6,355
11/10/2012	1,732				6,547
11/11/2012	1,483				6,419
11/12/2012	1,484				5,734
11/13/2012	1,601				6,084
11/14/2012	1,526				5,583
11/15/2012	1,576				5,749
11/16/2012	1,669				5,556
11/17/2012	1,735				5,673
11/18/2012	1,747				5,712
11/19/2012	1,705				5,713
11/20/2012	1,701				5,927
11/21/2012	1,685				6,205
11/22/2012	1,762				6,013
11/23/2012	1,655				5,556
11/24/2012	1,512				5,575
11/25/2012	1,312				5,300
11/26/2012	1,289				4,906
11/27/2012	1,134				4,992
11/28/2012	1,185				4,859
11/29/2012	1,153				5,343
11/30/2012	1,240				5,500
12/1/2012	1,307				5,677
12/2/2012	1,323				5,788
12/3/2012	1,409				5,836
12/4/2012	1,478				5,614
12/5/2012	1,425				5,466
12/6/2012	1,118				5,911
12/7/2012	1,230				6,110
12/8/2012	1,220				5,920
12/9/2012	1,075				6,135
12/10/2012	1,308				5,407
12/11/2012	1,289				4,776
12/12/2012	1,440				6,919
12/13/2012	1,644				5,707
12/14/2012	1,620				5,254
12/15/2012	1,607				5,532
12/16/2012	1,451				5,313
12/17/2012	1,612				5,409
12/18/2012	1,597				5,110
12/19/2012	1,782				5,617
12/20/2012	1,602				5,596
12/21/2012	1,551				5,416
12/22/2012	1,550				5,466

Daily Flare Monitoring Data - Bridgeton Landfill
7/1/2014 - 12/31/2014

Date	Average Device Flow (scfm)				Total Avg. Flow (scfm)
	Candlestick Flare (FL-100)	Candlestick Flare (FL-140)	Candlestick Flare (FL-120)	E. Aux. Candlestick Flare	
12/23/2012	1,969				5,780
12/24/2012	2,059				5,631
12/25/2012	1,895				5,409
12/26/2012	1,956				5,319
12/27/2012	1,662				5,392
12/28/2012	1,543				5,307
12/29/2012	1,664				5,499
12/30/2012	1,523				5,476
12/31/2012	1,442				5,647
1/1/2013	1,418				5,251
1/2/2013	1,378				5,329
1/3/2013	1,468				5,578
1/4/2013	1,393				5,109
1/5/2013	1,321				5,089
1/6/2013	1,358				4,852
1/7/2013	1,265			1,211	5,971
1/8/2013	1,247			1,247	5,913
1/9/2013	1,203			1,234	6,429
1/10/2013	1,243			1,301	6,971
1/11/2013	1,302				4,713
1/12/2013					4,388
1/13/2013	1,221			1,474	6,936
1/14/2013	1,394			1,434	5,732
1/15/2013	1,401			1,422	6,068
1/16/2013	1,316			1,388	5,826
1/17/2013	1,514			1,484	10,800
1/18/2013	1,413			1,389	5,584
1/19/2013					4,064
1/20/2013					1,888
1/21/2013	1,411			1,282	3,445
1/22/2013	1,894				9,289
1/23/2013	730				4,330
1/24/2013	1,271				4,677
1/25/2013	3,900				7,369
1/26/2013	3,901				7,401
1/27/2013	3,901				7,243
1/28/2013	3,900				7,714
1/29/2013	1,074				1,771
1/30/2013	806				4,365
1/31/2013	820				5,140
2/1/2013	#REF!				#REF!
2/2/2013	#REF!				#REF!
2/3/2013	#REF!				#REF!
2/4/2013	#REF!				#REF!
2/5/2013	#REF!				#REF!
2/6/2013	#REF!				#REF!

Daily Flare Monitoring Data - Bridgeton Landfill
7/1/2014 - 12/31/2014

Date	Average Device Flow (scfm)				Total Avg. Flow (scfm)
	Candlestick Flare (FL-100)	Candlestick Flare (FL-140)	Candlestick Flare (FL-120)	E. Aux. Candlestick Flare	
2/7/2013	#REF!				#REF!
2/8/2013	#REF!				#REF!
2/9/2013	#REF!				#REF!
2/10/2013	#REF!				#REF!
2/11/2013	#REF!				#REF!
2/12/2013	#REF!				#REF!
2/13/2013	#REF!				#REF!
2/14/2013	#REF!				#REF!
2/15/2013	#REF!				#REF!
2/16/2013	#REF!				#REF!
2/17/2013	#REF!				#REF!
2/18/2013	#REF!				#REF!
2/19/2013	#REF!				#REF!
2/20/2013	#REF!				#REF!
2/21/2013	#REF!				#REF!
2/22/2013	#REF!				#REF!
2/23/2013	#REF!				#REF!
2/24/2013	#REF!				#REF!
2/25/2013	#REF!				#REF!
2/26/2013	#REF!				#REF!
2/27/2013	#REF!				#REF!
2/28/2013	#REF!				#REF!
3/1/2013	848				4,966
3/2/2013	906				5,401
3/3/2013	874				5,764
3/4/2013	913				5,937
3/5/2013	976				5,998
3/6/2013	1,012				5,709
3/7/2013	879				5,761
3/8/2013	957				5,863
3/9/2013	915				6,015
3/10/2013	1,073				6,065
3/11/2013	1,178				6,339
3/12/2013	1,202				6,508
3/13/2013	1,332				6,412
3/14/2013	768				5,932
3/15/2013	1,284				6,842
3/16/2013	1,381				6,091
3/17/2013	1,842				6,368
3/18/2013	2,009				6,496
3/19/2013	1,578				6,137
3/20/2013	1,167				6,301
3/21/2013	1,383				5,569
3/22/2013	1,339				6,219
3/23/2013	1,247				7,066
3/24/2013	1,099				6,216

Daily Flare Monitoring Data - Bridgeton Landfill
7/1/2014 - 12/31/2014

Date	Average Device Flow (scfm)				Total Avg. Flow (scfm)
	Candlestick Flare (FL-100)	Candlestick Flare (FL-140)	Candlestick Flare (FL-120)	E. Aux. Candlestick Flare	
3/25/2013	1,177				6,288
3/26/2013	1,112				6,610
3/27/2013	1,167				6,604
3/28/2013	1,322				6,873
3/29/2013	1,898				7,246
3/30/2013	1,238				6,562
3/31/2013	1,970				6,837
4/1/2013	1,994				7,033
4/2/2013	1,655				6,746
4/3/2013	1,728				7,112
4/4/2013	2,008				7,501
4/5/2013	2,196				7,231
4/6/2013	1,889				6,641
4/7/2013					
4/8/2013	1,877				7,153
4/9/2013	2,156				7,006
4/10/2013	1,279				5,894
4/11/2013	1,335				5,615
4/12/2013	1,441				5,503
4/13/2013	1,259				6,107
4/14/2013	2,558				6,544
4/15/2013	2,135				6,014
4/16/2013	2,005				5,351
4/17/2013	2,413				5,756
4/18/2013	1,808				5,954
4/19/2013	2,032				6,331
4/20/2013	1,753				6,329
4/21/2013	1,773				6,496
4/22/2013	2,011				7,205
4/23/2013	1,660				6,462
4/24/2013	1,675				6,334
4/25/2013	1,687				6,286
4/26/2013	1,620				6,042
4/27/2013	1,029				6,145
4/28/2013	1,345				6,588
4/29/2013	1,982				7,050
4/30/2013	2,124				7,278

Daily Flare Monitoring Data - Bridgeton Landfill
7/1/2014 - 12/31/2014

Date	Average Device Flow (scfm)				Total Avg. Flow (scfm)
	Candlestick Flare (FL-100)	Candlestick Flare (FL-140)	Candlestick Flare (FL-120)	E. Aux. Candlestick Flare	
5/1/2013	2,168				5,377
5/2/2013	1,752				4,897
5/3/2013	1,779				5,096
5/4/2013	1,810				4,956
5/5/2013	1,707				4,995
5/6/2013	1,730				5,088
5/7/2013	2,235				5,642
5/8/2013	2,176				5,452
5/9/2013	2,110				5,095
5/10/2013	1,527				4,757
5/11/2013	1,642				4,851
5/12/2013	1,900				5,128
5/13/2013	1,810				5,017
5/14/2013	2,121				5,358
5/15/2013	1,920				5,158
5/16/2013	2,242				5,300
5/17/2013	2,121				5,351
5/18/2013	2,141				5,340
5/19/2013	2,375				5,636
5/20/2013	1,881				5,153
5/21/2013	2,112				5,357
5/22/2013	2,337				5,540
5/23/2013	2,214				5,453
5/24/2013	1,873				5,008
5/25/2013	2,007				5,219
5/26/2013	2,488				5,676
5/27/2013	2,601				5,787
5/28/2013	2,034				5,297
5/29/2013	2,321				5,545
5/30/2013	2,828				6,099
5/31/2013	2,741				5,928

Daily Flare Monitoring Data - Bridgeton Landfill
7/1/2014 - 12/31/2014

Date	Average Device Flow (scfm)				Total Avg. Flow (scfm)
	Candlestick Flare (FL-100)	Candlestick Flare (FL-140)	Candlestick Flare (FL-120)	E. Aux. Candlestick Flare	
6/1/2013	2,873				7,501
6/2/2013	2,245				7,431
6/3/2013	2,364				7,609
6/4/2013	2,713				7,654
6/5/2013	1,922			586	7,821
6/6/2013	1,918			529	7,735
6/7/2013	1,809			734	7,519
6/8/2013	2,592			596	8,285
6/9/2013	2,038			864	7,835
6/10/2013	1,589			1,079	7,982
6/11/2013	1,457			1,028	7,730
6/12/2013	2,110			1,056	8,363
6/13/2013	1,653			488	7,435
6/14/2013	1,214			1,119	7,511
6/15/2013	1,269			872	7,394
6/16/2013	2,105			745	7,960
6/17/2013	1,664			1,051	6,877
6/18/2013	1,496			1,141	7,643
6/19/2013	1,004			1,409	7,691
6/20/2013	1,196			1,184	7,757
6/21/2013	1,891			1,177	8,175
6/22/2013	2,301			1,380	7,545
6/23/2013	2,987			1,293	8,089
6/24/2013	3,046			1,443	7,986
6/25/2013	3,046			1,382	8,317
6/26/2013	2,725			1,391	7,919
6/27/2013	2,605			1,334	7,568
6/28/2013	2,817			1,326	7,996
6/29/2013	2,566			1,386	7,646
6/30/2013	2,911			1,432	8,037

Daily Flare Monitoring Data - Bridgeton Landfill
7/1/2014 - 12/31/2014

Date	Average Device Flow (scfm)				Total Avg. Flow (scfm)
	Candlestick Flare (FL-100)	Candlestick Flare (FL-140)	Candlestick Flare (FL-120)	E. Aux. Candlestick Flare	
7/1/2013	2,891			1,271	7,456
7/2/2013	2,708			1,514	7,531
7/3/2013	2,610				6,120
7/4/2013	2,901				6,397
7/5/2013	2,884			1,501	7,899
7/6/2013	2,544			1,535	7,970
7/7/2013	2,328			1,364	7,038
7/8/2013	2,392			1,580	7,768
7/9/2013	2,279			1,504	7,764
7/10/2013	2,004			1,570	7,534
7/11/2013	2,041			1,398	7,426
7/12/2013	2,195			1,516	7,632
7/13/2013	2,701			1,265	7,601
7/14/2013	2,188			1,305	6,818
7/15/2013	2,027			1,204	7,185
7/16/2013	1,383				5,123
7/17/2013	1,416			1,023	9,730
7/18/2013	1,066			1,003	9,310
7/19/2013	1,142				5,129
7/20/2013	957			900	8,774
7/21/2013	1,343			833	8,965
7/22/2013	1,512			1,007	9,467
7/23/2013	1,597			1,102	9,311
7/24/2013	1,609			1,047	9,588
7/25/2013	1,551			805	9,586
7/26/2013	1,612			936	9,631
7/27/2013	1,177			759	8,826
7/28/2013	949			846	8,930
7/29/2013	1,241			894	9,471
7/30/2013	801			939	8,705
7/31/2013	1,052			935	9,013

Daily Flare Monitoring Data - Bridgeton Landfill
7/1/2014 - 12/31/2014

Date	Average Device Flow (scfm)				Total Avg. Flow (scfm)
	Candlestick Flare (FL-100)	Candlestick Flare (FL-140)	Candlestick Flare (FL-120)	E. Aux. Candlestick Flare	
8/1/2013	1,210			962	9,344
8/2/2013	1,184			1,017	9,047
8/3/2013	1,218			1,014	9,092
8/4/2013	1,148			975	9,059
8/5/2013	1,138			946	9,093
8/6/2013	1,266			928	10,186
8/7/2013	1,286			1,103	10,379
8/8/2013	1,381			990	10,055
8/9/2013	1,158			1,074	10,174
8/10/2013	1,348			1,043	10,339
8/11/2013	1,288			1,122	10,354
8/12/2013	1,201			1,080	10,105
8/13/2013	1,022			1,061	9,747
8/14/2013	1,101			1,174	9,310
8/15/2013	1,172			976	9,867
8/16/2013	1,141			845	9,588
8/17/2013	1,190			903	9,902
8/18/2013	1,318			902	10,194
8/19/2013	1,111			1,055	10,156
8/20/2013	1,346			1,043	10,180
8/21/2013	960			1,048	9,514
8/22/2013	1,372			888	9,937
8/23/2013	1,268			977	9,647
8/24/2013	1,272			1,083	9,597
8/25/2013	1,335			1,286	10,244
8/26/2013	1,302			1,080	9,738
8/27/2013	1,263			1,071	9,719
8/28/2013	1,230			1,089	9,300
8/29/2013	1,277			989	10,041
8/30/2013	1,071			947	9,340
8/31/2013	1,093			1,062	9,099

Daily Flare Monitoring Data - Bridgeton Landfill
7/1/2014 - 12/31/2014

Date	Average Device Flow (scfm)				Total Avg. Flow (scfm)
	Candlestick Flare (FL-100)	Candlestick Flare (FL-140)	Candlestick Flare (FL-120)	E. Aux. Candlestick Flare	
9/1/2013	1,001			1,252	10,258
9/2/2013	975			1,205	10,164
9/3/2013	760			1,150	9,848
9/4/2013	615			1,211	9,570
9/5/2013	572			1,130	9,591
9/6/2013	700			1,055	9,295
9/7/2013	737			1,092	9,528
9/8/2013	772			1,065	9,352
9/9/2013	713			1,098	9,747
9/10/2013	855			1,060	9,243
9/11/2013	841			1,088	9,332
9/12/2013	749			1,110	9,676
9/13/2013	749			1,115	9,479
9/14/2013	741			1,123	9,128
9/15/2013	788			1,073	9,225
9/16/2013	749			1,122	8,898
9/17/2013	917			1,102	9,334
9/18/2013	801			1,082	9,312
9/19/2013	772			1,058	9,528
9/20/2013	821	3,561		1,135	8,768
9/21/2013	855	2,122		1,139	6,507
9/22/2013	705	3,790		1,140	7,435
9/23/2013	701	3,769		1,122	7,061
9/24/2013	637	3,997	1,742	1,485	7,861
9/25/2013	849	1,744	2,449	1,533	6,575
9/26/2013	1,724	2,171	1,224	1,573	6,692
9/27/2013	1,209	2,145	1,348	1,453	6,155
9/28/2013	1,327	1,939	1,283	1,427	5,976
9/29/2013	2,833	2,030	1,249	1,512	7,624
9/30/2013	1,270	1,841	1,427	1,471	6,009

Daily Flare Monitoring Data - Bridgeton Landfill
7/1/2014 - 12/31/2014

Date	Average Device Flow (scfm)				Total Avg. Flow (scfm)
	Candlestick Flare (FL-100)	Candlestick Flare (FL-140)	Candlestick Flare (FL-120)	E. Aux. Candlestick Flare	
10/1/2013	1,207	1,303	1,966	1,379	5,855
10/2/2013	1,025	1,530	2,137	1,242	5,934
10/3/2013	1,003	1,524	2,075	1,222	5,824
10/4/2013	1,004	1,535	2,110	1,320	5,969
10/5/2013	980	1,515	2,053	1,300	5,848
10/6/2013	971	1,344	1,990	1,296	5,601
10/7/2013	1,013	1,570	1,929	1,101	5,613
10/8/2013	1,081	1,307	2,196	922	5,506
10/9/2013	1,382	1,427	1,915	1,048	5,772
10/10/2013	966	1,688	1,591	901	5,146
10/11/2013	900	1,870	1,900	1,222	5,892
10/12/2013	851	1,981	1,684	1,046	5,562
10/13/2013	826	1,755	1,915	528	5,024
10/14/2013	1,005	1,744	1,651	594	4,994
10/15/2013	1,030	1,805	1,393	1,330	5,558
10/16/2013	1,045	1,781	910	1,407	5,143
10/17/2013	1,005	1,259	1,776	1,239	5,279
10/18/2013	950	1,705	1,816	1,274	5,745
10/19/2013	960	1,544	1,944	1,057	5,505
10/20/2013	950	1,620	1,796	544	4,910
10/21/2013	850	1,680	1,970	1,454	5,954
10/22/2013	760	1,780	1,720	1,066	5,326
10/23/2013	900	1,700	900	1,120	4,620
10/24/2013	900	1,720	1,850	952	5,422
10/25/2013	946	1,758	1,888	1,114	5,706
10/26/2013	949	1,884	1,150	1,092	5,075
10/27/2013	1,007	1,735	1,702	1,092	5,536
10/28/2013	834	1,822	1,669	1,087	5,412
10/29/2013	1,004	1,722	1,865	854	5,445
10/30/2013	927	1,861	1,473	984	5,245
10/31/2013	970	1,741	1,941	998	5,650

Daily Flare Monitoring Data - Bridgeton Landfill
7/1/2014 - 12/31/2014

Date	Average Device Flow (scfm)				Total Avg. Flow (scfm)
	Candlestick Flare (FL-100)	Candlestick Flare (FL-140)	Candlestick Flare (FL-120)	E. Aux. Candlestick Flare	
11/1/2013	947	1,629	1,922	948	5,446
11/2/2013	964	1,642	1,890	971	5,467
11/3/2013	959	1,627	1,942	846	5,374
11/4/2013	848	1,731	1,780	1,170	5,529
11/5/2013	860	1,784	1,826	1,171	5,641
11/6/2013	1,440	2,110	1,987	770	6,307
11/7/2013	979	1,666	1,886	797	5,328
11/8/2013	1,337	1,764	1,808	662	5,571
11/9/2013	753	1,734	1,879	1,239	5,605
11/10/2013	751	1,724	1,861	1,218	5,554
11/11/2013	732	1,787	1,850	1,206	5,575
11/12/2013	731	1,567	1,756	1,224	5,278
11/13/2013	820	1,471	1,406	1,214	4,911
11/14/2013	870	1,637	1,712	1,201	5,420
11/15/2013	750	1,889	1,535	1,097	5,271
11/16/2013	931	1,941	1,761	1,031	5,664
11/17/2013	933	1,967	1,842	1,021	5,763
11/18/2013	800	1,995	1,342	1,074	5,211
11/19/2013	1,110	1,660	1,930	1,054	5,754
11/20/2013	1,040	1,670	1,580	1,030	5,320
11/21/2013	1,170	1,750	1,680	830	5,430
11/22/2013	1,103	1,684	1,532	766	5,085
11/23/2013	1,088	1,634	1,559	1,083	5,364
11/24/2013	1,017	1,522	1,587	1,068	5,194
11/25/2013	1,046	1,677	1,618	1,057	5,398
11/26/2013	706	1,256	2,460	1,024	5,446
11/27/2013	784	1,420	2,328	1,029	5,561
11/28/2013	660	1,601	2,423	934	5,618
11/29/2013	550	1,561	2,465	943	5,519
11/30/2013	665	1,614	2,389	1,069	5,737

Daily Flare Monitoring Data - Bridgeton Landfill
7/1/2014 - 12/31/2014

Date	Average Device Flow (scfm)				Total Avg. Flow (scfm)
	Candlestick Flare (FL-100)	Candlestick Flare (FL-140)	Candlestick Flare (FL-120)	E. Aux. Candlestick Flare	
12/1/2013	1,030	1,730	1,125	918	4,803
12/2/2013	872	1,202	2,437	888	5,399
12/3/2013	991	1,857	1,433	812	5,093
12/4/2013	1,022	1,170	2,425	772	5,389
12/5/2013	862	1,052	2,549	771	5,234
12/6/2013	901	1,306	2,518	775	5,500
12/7/2013	1,175	1,765	1,980	0	4,920
12/8/2013	857	1,283	2,627	938	5,705
12/9/2013	1,025	1,478	2,025	933	5,461
12/10/2013	978	1,568	1,833	1,023	5,402
12/11/2013	829	1,422	2,460	949	5,660
12/12/2013	883	1,265	2,602	908	5,658
12/13/2013	894	1,301	2,707	841	5,743
12/14/2013	1,206	1,291	2,084	821	5,402
12/15/2013	1,040	1,262	2,364	1,168	5,834
12/16/2013	1,474	1,227	1,888	916	5,505
12/17/2013	1,126	1,174	2,427	868	5,595
12/18/2013	994	1,703	2,099	1,099	5,895
12/19/2013	1,727	1,938	852	977	5,494
12/20/2013	1,880	1,560	2,522	988	6,950
12/21/2013	1,968	1,088	2,541	1,061	6,658
12/22/2013	1,610	1,298	2,420	960	6,288
12/23/2013	1,116	1,662	2,553	871	6,202
12/24/2013	1,721	1,932	2,153	808	6,614
12/25/2013	1,063	1,604	1,725	808	5,200
12/26/2013	2,025	1,691	1,453	835	6,004
12/27/2013	1,228	1,261	2,149	851	5,489
12/28/2013	2,029	1,362	2,203	968	6,562
12/29/2013	1,755	1,425	2,302	919	6,401
12/30/2013	2,025	1,350	2,350	950	6,675
12/31/2013	2,100	1,300	2,156	932	6,488

Daily Flare Monitoring Data - Bridgeton Landfill
7/1/2014 - 12/31/2014

Date	Average Device Flow (scfm)				Total Avg. Flow (scfm)
	Candlestick Flare (FL-100)	Candlestick Flare (FL-140)	Candlestick Flare (FL-120)	E. Aux. Candlestick Flare	
1/1/2014	1,850	2,467	1,270	890	6,477
1/2/2014	1,800	2,100	1,200	950	6,050
1/3/2014	2,640	1,930	1,450	1,025	7,045
1/4/2014	1,836	2,635	1,356	965	6,792
1/5/2014	1,257	2,500	1,895	863	6,515
1/6/2014	1,877	1,950	1,456	892	6,175
1/7/2014	1,789	2,426	1,852	964	7,031
1/8/2014	1,877	2,855	0	974	5,706
1/9/2014	1,654	2,756	0	964	5,374
1/10/2014	1,422	2,315	1,687	1,204	6,628
1/11/2014	1,654	2,146	1,789	1,178	6,767
1/12/2014	1,623	2,635	1,664	1,065	6,987
1/13/2014	1,110	3,300	2,040	972	7,422
1/14/2014	2,650	791	2,360	975	6,776
1/15/2014	1,600	2,808	1,750	1,035	7,193
1/16/2014	1,906	2,795	1,743	1,022	7,466
1/17/2014	1,216	2,893	1,900	945	6,954
1/18/2014	2,500	2,945	1,408	895	7,748
1/19/2014	2,203	2,756	1,623	833	7,415
1/20/2014	1,824	3,331	2,201	1,075	8,431
1/21/2014	1,914	2,620	1,375	1,437	7,346
1/22/2014	2,098	2,070	1,313	866	6,347
1/23/2014	1,907	2,690	1,120	1,003	6,720
1/24/2014	2,009	2,240	1,034	1,092	6,375
1/25/2014	1,489	2,436	1,624	950	6,499
1/26/2014	1,326	2,136	1,956	933	6,351
1/27/2014	1,851	2,364	1,514	963	6,692
1/28/2014	1,542	2,580	1,083	975	6,180
1/29/2014	1,332	2,413	1,415	906	6,066
1/30/2014	1,343	2,250	1,429	830	5,852
1/31/2014	1,425	2,154	1,587	1,142	6,308

Daily Flare Monitoring Data - Bridgeton Landfill
7/1/2014 - 12/31/2014

Date	Average Device Flow (scfm)				Total Avg. Flow (scfm)
	Candlestick Flare (FL-100)	Candlestick Flare (FL-140)	Candlestick Flare (FL-120)	E. Aux. Candlestick Flare	
2/1/2014	1,489	2,408	1,968	1,191	7,055
2/2/2014	1,562	2,548	1,874	1,062	7,047
2/3/2014	1,572	2,365	1,953	1,069	6,958
2/4/2014	1,469	2,312	1,914	1,084	6,778
2/5/2014	1,445	2,455	1,788	1,085	6,773
2/6/2014	1,421	2,199	1,545	1,067	6,232
2/7/2014	1,284	2,037	1,709	1,090	6,121
2/8/2014	1,378	2,459	1,832	964	6,632
2/9/2014	1,474	2,589	1,916	1,017	6,995
2/10/2014	1,294	2,611	1,779	973	6,658
2/11/2014	1,260	2,367	1,725	983	6,334
2/12/2014	1,315	2,422	1,821	955	6,512
2/13/2014	1,405	2,480	1,894	882	6,662
2/14/2014	1,294	2,412	1,770	900	6,377
2/15/2014	1,362	2,468	1,793	845	6,469
2/16/2014	1,309	2,432	1,703	943	6,387
2/17/2014	1,393	2,443	1,765	832	6,433
2/18/2014	1,430	2,460	1,954	869	6,714
2/19/2014	1,468	2,395	2,004	725	6,592
2/20/2014	1,345	2,423	1,878	890	6,536
2/21/2014	1,435	2,498	2,008	528	6,469
2/22/2014	1,430	2,532	2,077	432	6,471
2/23/2014	1,272	2,599	2,018	406	6,295
2/24/2014	1,450	2,424	1,973	346	6,193
2/25/2014	1,465	2,495	1,925	594	6,479
2/26/2014	1,460	2,481	1,876	798	6,615
2/27/2014	1,448	2,437	1,918	811	6,615
2/28/2014	1,525	2,192	2,006	687	6,410

Daily Flare Monitoring Data - Bridgeton Landfill
7/1/2014 - 12/31/2014

Date	Average Device Flow (scfm)				Total Avg. Flow (scfm)
	Candlestick Flare (FL-100)	Candlestick Flare (FL-140)	Candlestick Flare (FL-120)	E. Aux. Candlestick Flare	
3/1/2014	1,446	1,994	2,191	705	6,335
3/2/2014	1,486	1,892	2,257	792	6,427
3/3/2014	1,378	1,776	2,182	906	6,243
3/4/2014	1,488	2,000	2,168	770	6,426
3/5/2014	1,501	2,023	2,116	730	6,370
3/6/2014	1,344	2,006	2,100	650	6,100
3/7/2014	1,402	1,993	2,123	775	6,293
3/8/2014	1,391	1,912	2,100	1,131	6,535
3/9/2014	1,399	1,953	2,089	1,065	6,506
3/10/2014	1,428	2,067	2,145	951	6,592
3/11/2014	1,066	2,152	2,348	912	6,478
3/12/2014	1,586	1,486	2,289	831	6,192
3/13/2014	1,853	2,040	1,426	875	6,194
3/14/2014	1,555	1,767	2,308	830	6,460
3/15/2014	975	1,917	2,555	814	6,260
3/16/2014	1,125	2,089	2,016	788	6,018
3/17/2014	834	2,336	2,247	837	6,254
3/18/2014	1,189	2,317	2,641	808	6,955
3/19/2014	1,171	2,817	2,564	826	7,377
3/20/2014	1,632	2,586	2,452	765	7,435
3/21/2014	1,693	2,748	2,378	763	7,581
3/22/2014	1,422	2,771	2,212	775	7,180
3/23/2014	1,400	2,543	2,362	803	7,107
3/24/2014	1,573	2,375	2,390	816	7,155
3/25/2014	1,717	2,567	2,037	845	7,167
3/26/2014	1,624	2,500	2,114	814	7,051
3/27/2014	1,468	2,577	2,047	541	6,633
3/28/2014	1,328	2,400	2,298	571	6,597
3/29/2014	1,315	2,519	1,869	753	6,457
3/30/2014	1,451	2,955	1,752	858	7,016
3/31/2014	1,226	2,643	2,354	1,027	7,250

Daily Flare Monitoring Data - Bridgeton Landfill
7/1/2014 - 12/31/2014

Date	Average Device Flow (scfm)				Total Avg. Flow (scfm)
	Candlestick Flare (FL-100)	Candlestick Flare (FL-140)	Candlestick Flare (FL-120)	E. Aux. Candlestick Flare	
4/1/2014	1,391	2,468	2170	898	6,926
4/2/2014	1,624	2,276	2,082	783	6,765
4/3/2014	1,646	2,052	2,443	705	6,847
4/4/2014	1,846	2,171	2,178	693	6,888
4/5/2014	1,875	2,170	2,370	781	7,196
4/6/2014	2,039	2,247	2,191	771	7,249
4/7/2014	1,804	2,114	2,224	927	7,068
4/8/2014	1,777	2,061	2,265	896	6,999
4/9/2014	1,854	2,085	2,216	933	7,088
4/10/2014	1,723	2,079	2,518	890	7,210
4/11/2014	2,011	2,083	1,801	871	6,767
4/12/2014	2,171	2,371	1,626	895	7,063
4/13/2014	2,222	2,358	1,780	880	7,239
4/14/2014	2,220	2,308	1,502	816	6,847
4/15/2014	2,250	2,194	1,531	733	6,709
4/16/2014	2,279	2,157	1,737	624	6,797
4/17/2014	2,260	2,482	1,732	781	7,256
4/18/2014	2,074	2,735	1,625	908	7,342
4/19/2014	2,233	2,773	1,682	856	7,544
4/20/2014	2,286	2,804	1,743	842	7,675
4/21/2014	2,189	2,875	1,801	808	7,672
4/22/2014	2,093	3,292	2,046	848	8,279
4/23/2014	1,996	3,251	2,070	814	8,131
4/24/2014	2,056	2,997	1,652	692	7,398
4/25/2014	2,384	3,324	1,632	699	8,039
4/26/2014	2,388	3,312	1,611	951	8,262
4/27/2014	2,399	3,286	1,612	909	8,206
4/28/2014	2,282	3,178	1,446	944	7,850
4/29/2014	2,088	2,993	1,361	935	7,377
4/30/2014	2,000	3,025	1,639	942	7,606

Daily Flare Monitoring Data - Bridgeton Landfill
7/1/2014 - 12/31/2014

Date	Average Device Flow (scfm)				Total Avg. Flow (scfm)
	Candlestick Flare (FL-100)	Candlestick Flare (FL-140)	Candlestick Flare (FL-120)	E. Aux. Candlestick Flare	
5/1/2014	1,765	2,843	2,017	947	7,572
5/2/2014	1,650	2,812	2,290	905	7,657
5/3/2014	1,903	3,084	2,058	908	7,954
5/4/2014	2,313	3,362	1,503	921	8,099
5/5/2014	2,409	3,480	1,556	831	8,276
5/6/2014	2,265	3,054	1,430	774	7,523
5/7/2014	1,641	3,309	1,943	806	7,699
5/8/2014	1,319	3,075	2,456	836	7,687
5/9/2014	1,314	3,082	2,523	788	7,706
5/10/2014	1,328	3,151	2,523	769	7,771
5/11/2014	1,341	3,150	2,595	767	7,853
5/12/2014	1,358	3,133	2,727	767	7,985
5/13/2014	868	2,371	2,238	707	6,185
5/14/2014	640	2,395	2,289	767	6,091
5/15/2014	1,149	2,578	2,189	792	6,708
5/16/2014	1,306	2,758	2,271	719	7,054
5/17/2014	1,441	2,953	2,305	679	7,377
5/18/2014	1,505	3,009	2,318	833	7,665
5/19/2014	1,473	2,946	2,558	760	7,736
5/20/2014	1,599	2,788	2,404	763	7,555
5/21/2014	1,479	2,772	2,647	763	7,661
5/22/2014	1,359	2,678	3,166	728	7,932
5/23/2014	1,296	2,648	3,226	692	7,861
5/24/2014	1,476	2,590	3,198	599	7,864
5/25/2014	1,338	2,490	3,002	697	7,527
5/26/2014	1,380	2,589	2,999	683	7,650
5/27/2014	1,431	2,939	3,482	659	8,510
5/28/2014	1,415	2,941	3,496	595	8,446
5/29/2014	1,401	2,964	3,567	537	8,469
5/30/2014	1,360	2,976	3,623	436	8,395
5/31/2014	1,360	3,007	3,647	356	8,370

Daily Flare Monitoring Data - Bridgeton Landfill
7/1/2014 - 12/31/2014

Date	Average Device Flow (scfm)				Total Avg. Flow (scfm)
	Candlestick Flare (FL-100)	Candlestick Flare (FL-140)	Candlestick Flare (FL-120)	E. Aux. Candlestick Flare	
6/1/2014	1,647	2,000	3,464	283	7,394
6/2/2014	1,922	3,194	2,700	223	8,038
6/3/2014	2,022	3,265	2,811	160	8,259
6/4/2014	1,936	3,471	2,962	151	8,521
6/5/2014	1,874	3,372	2,847	141	8,234
6/6/2014	1,890	3,400	2,711	317	8,317
6/7/2014	1,686	3,080	2,496	743	8,006
6/8/2014	1,668	3,083	2,462	673	7,886
6/9/2014	1,612	2,987	2,332	634	7,565
6/10/2014	1,636	3,003	2,424	586	7,649
6/11/2014	1,653	3,031	2,492	536	7,711
6/12/2014	1,674	3,069	2,456	538	7,737
6/13/2014	1,487	2,979	2,248	558	7,272
6/14/2014	1,762	3,184	2,590	489	8,025
6/15/2014	1,764	3,176	2,596	503	8,040
6/16/2014	1,880	3,361	2,628	436	8,306
6/17/2014	2,437	2,678	2,919	527	8,561
6/18/2014	2,154	2,853	2,771	642	8,420
6/19/2014	1,938	2,686	2,725	846	8,195
6/20/2014	1,914	2,606	2,800	863	8,182
6/21/2014	1,915	N/A	N/A	830	N/A
6/22/2014	1,886	N/A	N/A	603	N/A
6/23/2014	1,955	2,644	2,818	582	7,998
6/24/2014	1,933	2,603	2,695	742	7,974
6/25/2014	2,102	2,708	3,033	262	8,105
6/26/2014	1,954	2,914	3,540	0	8,408
6/27/2014	1,577	3,471	3,505	0	8,553
6/28/2014	1,971	3,462	3,501	0	8,934
6/29/2014	1,887	3,334	3,390	0	8,611
6/30/2014	2,027	3,360	3,427	0	8,814

Daily Flare Monitoring Data - Bridgeton Landfill
7/1/2014 - 12/31/2014

Date	Average Device Flow (scfm)				Total Avg. Flow (scfm)
	Candlestick Flare (FL-100)	Candlestick Flare (FL-140)	Candlestick Flare (FL-120)	E. Aux. Candlestick Flare	
7/1/2014	1,902	3,662	3,617	0	9,181
7/2/2014	1,599	3,221	3,406	0	8,226
7/3/2014	1,795	3,484	3,538	0	8,816
7/4/2014	1,933	3,611	3,623	0	9,167
7/5/2014	1,537	3,140	3,229	0	7,906
7/6/2014	1,960	3,497	3,527	0	8,985
7/7/2014	2,042	3,552	3,529	0	9,123
7/8/2014	2,083	3,096	3,324	0	8,503
7/9/2014	2,114	3,432	2,898	0	8,444
7/10/2014	2,103	3,474	2,906	0	8,483
7/11/2014	2,292	3,085	2,656	0	8,033
7/12/2014	2,308	3,859	3,229	0	9,396
7/13/2014	2,253	3,818	3,183	0	9,254
7/14/2014	2,059	3,509	3,045	0	8,613
7/15/2014	2,057	3,377	2,998	0	8,432
7/16/2014	2,190	3,743	3,185	0	9,118
7/17/2014	2,232	3,601	3,121	0	8,953
7/18/2014	2,294	3,853	3,303	0	9,450
7/19/2014	2,349	3,525	3,116	0	8,989
7/20/2014	2,375	3,875	3,263	0	9,514
7/21/2014	2,384	3,877	3,317	0	9,578
7/22/2014	2,440	3,913	3,344	0	9,697
7/23/2014	2,290	3,845	3,250	0	9,385
7/24/2014	2,184	3,718	3,167	0	9,069
7/25/2014	2,128	3,659	3,187	0	8,975
7/26/2014	2,094	3,229	2,848	243	8,415
7/27/2014	2,354	3,304	3,180	576	9,414
7/28/2014	1,981	3,377	3,048	222	8,629
7/29/2014	2,103	3,637	3,097	0	8,837
7/30/2014	2,197	3,723	3,081	0	9,001
7/31/2014	2,200	3,663	3,091	0	8,954

Daily Flare Monitoring Data - Bridgeton Landfill
7/1/2014 - 12/31/2014

Date	Average Device Flow (scfm)				Total Avg. Flow (scfm)
	Candlestick Flare (FL-100)	Candlestick Flare (FL-140)	Candlestick Flare (FL-120)	E. Aux. Candlestick Flare	
8/1/2014	2,121	3,620	3,072	0	8,814
8/2/2014	2,135	3,650	3,103	0	8,888
8/3/2014	2,235	3,484	2,952	0	8,671
8/4/2014	2,272	3,806	3,206	0	9,284
8/5/2014	2,241	3,748	3,193	32	9,215
8/6/2014	1,925	3,206	2,744	0	7,875
8/7/2014	2,040	3,496	3,135	0	8,671
8/8/2014	2,128	3,615	3,087	0	8,830
8/9/2014	2,070	3,552	3,039	0	8,661
8/10/2014	2,128	3,652	3,102	0	8,882
8/11/2014	2,153	3,674	3,096	0	8,923
8/12/2014	2,065	3,588	3,098	0	8,751
8/13/2014	2,147	3,691	3,158	0	8,996
8/14/2014	2,240	3,588	3,048	0	8,877
8/15/2014	2,229	3,759	3,152	0	9,140
8/16/2014	2,080	3,589	3,095	0	8,763
8/17/2014	2,081	3,596	3,095	0	8,772
8/18/2014	2,149	3,656	3,221	0	9,026
8/19/2014	2,152	3,699	3,420	0	9,270
8/20/2014	2,107	3,713	3,340	0	9,159
8/21/2014	2,138	3,629	3,319	0	9,086
8/22/2014	2,249	3,814	3,397	0	9,460
8/23/2014	2,359	3,905	3,495	0	9,759
8/24/2014	2,275	3,458	3,256	0	8,988
8/25/2014	2,363	3,936	3,496	0	9,794
8/26/2014	2,094	3,501	3,061	0	8,656
8/27/2014	2,156	3,816	3,325	0	9,297
8/28/2014	2,073	3,863	3,170	0	9,105
8/29/2014	2,012	3,749	3,200	0	8,961
8/30/2014	1,966	3,474	3,437	0	8,877
8/31/2014	2,142	3,640	3,464	0	9,245

Daily Flare Monitoring Data - Bridgeton Landfill
7/1/2014 - 12/31/2014

Date	Average Device Flow (scfm)				Total Avg. Flow (scfm)
	Candlestick Flare (FL-100)	Candlestick Flare (FL-140)	Candlestick Flare (FL-120)	E. Aux. Candlestick Flare	
9/1/2014	1,954	3,154	3,383	0	8,491
9/2/2014	1,670	3,136	3,740	0	8,546
9/3/2014	1,739	3,479	3,630	34	8,882
9/4/2014	2,298	3,381	3,323	0	9,002
9/5/2014	2,320	3,467	3,321	0	9,108
9/6/2014	2,009	3,115	3,271	0	8,395
9/7/2014	2,102	3,212	3,256	0	8,569
9/8/2014	2,080	3,204	3,243	0	8,526
9/9/2014	2,037	3,526	2,960	0	8,523
9/10/2014	1,916	3,721	2,806	0	8,443
9/11/2014	1,799	3,450	2,651	0	7,900
9/12/2014	1,720	3,374	2,725	0	7,819
9/13/2014	1,782	3,477	2,740	0	7,999
9/14/2014	1,877	3,618	2,674	0	8,169
9/15/2014	1,928	3,595	2,654	0	8,176
9/16/2014	1,935	3,576	2,612	0	8,123
9/17/2014	1,927	3,503	2,704	0	8,134
9/18/2014	2,058	3,716	2,741	0	8,515
9/19/2014	2,111	3,769	2,801	0	8,681
9/20/2014	2,259	3,156	3,125	0	8,540
9/21/2014	2,119	2,785	3,156	0	8,060
9/22/2014	2,177	2,978	3,165	0	8,320
9/23/2014	2,210	3,008	3,257	0	8,476
9/24/2014	2,214	2,970	3,152	415	8,752
9/25/2014	2,215	2,981	3,049	721	8,966
9/26/2014	2,375	3,139	3,259	231	9,004
9/27/2014	2,357	3,151	3,341	0	8,850
9/28/2014	2,409	3,164	3,336	0	8,909
9/29/2014	2,244	3,025	3,105	467	8,841
9/30/2014	2,332	3,044	3,235	233	8,844

Daily Flare Monitoring Data - Bridgeton Landfill
7/1/2014 - 12/31/2014

Date	Average Device Flow (scfm)				Total Avg. Flow (scfm)
	Candlestick Flare (FL-100)	Candlestick Flare (FL-140)	Candlestick Flare (FL-120)	E. Aux. Candlestick Flare	
10/1/2014	2,322	3,027	3,331	49	8,729
10/2/2014	2,167	2,859	3,262	0	8,288
10/3/2014	1,983	2,690	3,138	0	7,810
10/4/2014	1,932	2,691	3,078	0	7,701
10/5/2014	2,042	2,772	3,205	0	8,020
10/6/2014	2,148	2,829	3,171	0	8,148
10/7/2014	2,109	2,824	3,206	0	8,140
10/8/2014	2,189	2,869	3,126	0	8,184
10/9/2014	2,043	2,727	3,124	0	7,894
10/10/2014	1,953	2,625	3,093	0	7,671
10/11/2014	1,949	2,629	3,073	0	7,652
10/12/2014	2,020	2,647	3,062	0	7,729
10/13/2014	2,023	2,580	3,064	0	7,666
10/14/2014	1,922	2,545	3,063	0	7,530
10/15/2014	1,952	2,587	3,035	0	7,574
10/16/2014	2,087	2,732	3,102	0	7,921
10/17/2014	2,066	2,665	3,099	0	7,830
10/18/2014	1,961	2,585	3,065	0	7,612
10/19/2014	1,992	2,620	3,061	0	7,673
10/20/2014	1,989	2,696	3,183	28	7,896
10/21/2014	2,078	2,712	3,091	0	7,881
10/22/2014	2,063	2,670	3,109	0	7,842
10/23/2014	2,052	2,654	3,095	0	7,800
10/24/2014	2,153	2,760	3,139	0	8,052
10/25/2014	2,288	2,840	3,202	0	8,330
10/26/2014	2,192	2,783	3,218	0	8,193
10/27/2014	2,217	2,774	3,219	0	8,210
10/28/2014	2,058	2,622	3,108	0	7,788
10/29/2014	2,003	2,584	3,076	95	7,759
10/30/2014	1,980	2,552	3,037	307	7,877
10/31/2014	1,955	2,498	3,079	0	7,532

Daily Flare Monitoring Data - Bridgeton Landfill
7/1/2014 - 12/31/2014

Date	Average Device Flow (scfm)				Total Avg. Flow (scfm)
	Candlestick Flare (FL-100)	Candlestick Flare (FL-140)	Candlestick Flare (FL-120)	E. Aux. Candlestick Flare	
11/1/2014	1,959	2,555	3,066	0	7,579
11/2/2014	1,944	2,496	3,135	0	7,574
11/3/2014	2,129	2,614	3,201	41	7,984
11/4/2014	2,007	2,524	3,213	0	7,744
11/5/2014	2,055	2,631	3,157	0	7,843
11/6/2014	1,950	2,488	3,148	0	7,585
11/7/2014	2,003	2,537	3,147	0	7,687
11/8/2014	2,008	2,513	3,158	0	7,680
11/9/2014	2,040	2,544	3,172	0	7,756
11/10/2014	2,074	2,810	3,151	0	8,034
11/11/2014	1,844	2,655	2,929	0	7,428
11/12/2014	1,764	2,563	2,905	0	7,232
11/13/2014	1,741	2,657	2,806	0	7,204
11/14/2014	1,969	2,539	2,740	0	7,247
11/15/2014	2,154	2,440	2,728	0	7,321
11/16/2014	2,090	2,419	2,772	0	7,280
11/17/2014	1,374	2,226	2,392	0	5,992
11/18/2014	1,625	2,682	2,741	0	7,048
11/19/2014	1,849	2,400	2,472	8	6,729
11/20/2014	1,640	2,603	2,968	22	7,232
11/21/2014	2,080	2,734	2,886	0	7,700
11/22/2014	2,341	2,966	3,025	0	8,333
11/23/2014	2,133	3,147	2,864	0	8,145
11/24/2014	1,821	2,859	2,537	0	7,217
11/25/2014	1,879	2,811	2,437	0	7,127
11/26/2014	1,958	2,811	2,474	0	7,244
11/27/2014	2,050	2,733	2,193	0	6,976
11/28/2014	2,354	2,838	2,234	0	7,426
11/29/2014	2,268	2,963	2,312	0	7,543
11/30/2014	2,313	3,077	2,510	0	7,901

Daily Flare Monitoring Data - Bridgeton Landfill
7/1/2014 - 12/31/2014

Date	Average Device Flow (scfm)				Total Avg. Flow (scfm)
	Candlestick Flare (FL-100)	Candlestick Flare (FL-140)	Candlestick Flare (FL-120)	E. Aux. Candlestick Flare	
12/1/2014	2,179	2,896	2,453	0	7,528
12/2/2014	1,956	2,689	2,411	0	7,057
12/3/2014	1,904	2,799	2,225	131	7,059
12/4/2014	1,891	2,812	2,151	158	7,012
12/5/2014	2,017	2,954	2,463	0	7,433
12/6/2014	1,951	2,877	2,485	0	7,312
12/7/2014	2,046	3,008	2,613	0	7,666
12/8/2014	2,016	2,984	2,719	61	7,780
12/9/2014	2,004	2,984	2,626	21	7,636
12/10/2014	2,001	2,970	2,507	153	7,631
12/11/2014	2,055	3,192	2,660	184	8,091
12/12/2014	2,192	3,110	2,688	202	8,192
12/13/2014	2,338	3,352	2,845	0	8,535
12/14/2014	2,333	3,279	2,783	0	8,395
12/15/2014	2,289	3,238	2,857	0	8,384
12/16/2014	2,389	3,038	2,714	0	8,141
12/17/2014	2,350	2,841	2,633	187	8,011
12/18/2014	2,504	2,997	2,575	0	8,076
12/19/2014	2,326	2,745	2,418	48	7,537
12/20/2014	2,077	2,485	2,804	0	7,366
12/21/2014	2,131	2,510	2,964	0	7,606
12/22/2014	2,008	2,440	2,838	0	7,286
12/23/2014	2,286	2,519	2,956	0	7,762
12/24/2014	2,279	2,660	3,110	0	8,049
12/25/2014	2,345	2,687	3,145	0	8,177
12/26/2014	2,400	2,682	3,102	0	8,184
12/27/2014	2,255	2,585	3,003	0	7,843
12/28/2014	2,203	2,546	3,033	0	7,782
12/29/2014	2,200	2,619	3,025	0	7,845
12/30/2014	2,212	2,668	2,871	0	7,751
12/31/2014	2,110	2,827	2,827	0	7,764

Inlet Lab Data

Date	CH4	CO2	O2	N2	H2	CO (%)	CO (ppm)
8/29/2012	14	46	5	24	9.6	0.18	1,800
9/25/2012	13	47	5.3	24	10	0.19	1,900
11/1/2012	10	46	5.7	26	10	0.20	2,000
12/4/2012	11	46	5.7	26	10	0.21	2100
1/22/2013	12	47	5.7	25	11	0.20	2000
2/12/2013	11	51	4.9	21	11	0.19	1900
3/5/2013	12	55	3.9	17	13	0.21	2100
4/25/2013	8	32	11	40	8.1	0.12	1200
5/15/2013	11	49	5	20	13	0.19	1900
6/13/2013	9.8	40	7.6	30	10	0.17	1700
7/11/2013	13	47	5.3	22	12	0.18	1800
8/8/2013	12	52	4.3	18	12	0.16	1600
9/18/2013	13	54	3.9	17	11	0.17	1700
10/8/2013	12	50	4.7	20	13	0.18	1800
11/13/2013	8.6	38	8.9	35	9	0.11	1100
12/12/2013	9.1	39	8.6	33	9.6	0.12	1200
1/15/2014	6.4	29	12	45	7.5	0.091	910
2/18/2014	8.3	37	9.5	36	9	0.10	1000
3/12/2014	7.2	36	9.7	36	10	0.11	1100
4/8/2014	8.1	35	10	38	9.1	0.09	900
5/7/2014	9.8	40	8.1	32	9.7	0.10	1000
6/27/2014	11	45	6	25	12	0.11	1100
7/17/2014	10	42	6.7	27	13	0.21	2100
8/14/2014	11	45	5.7	24	13	0.21	2100
9/11/2014	10	44	6.3	26	13	0.13	1300
10/6/2014	9.7	40	7.2	29	12	0.13	1300
11/20/2014	7.4	32	10	39	11	0.12	1200
12/9/2014	6.5	27	12	46	8.3	0.1	1000

Daily Flare Monitoring Data And Inlet Lab Data

Date	Candlestick Flare FL-100 (Flare Sta 2)								Flare Sta #3 FL-120		Flare Sta #1 FL-140		Total Utility Flare Flow	East Side Flare		Total Flow
	CH4	CO2	O2	Bal.	Press./Vac.	Gas Inlet Temp (°F)	Flow (scfm)	Flare Temp.	Flow (scfm)	Flare Temp.	Flow (scfm)	Flare Temp.	Flow (scfm)	CH4	Flow (scfm)	scfm
8/7/2012	16.9	51.9	3.7	27.5	-46	137	1867	1256					1,867	16.1	1908.74	7597.74
8/8/2012	17.2	52.3	3.7	26.8	-45.8	136	1886	1258					1,886	16.1	1844.12	7646.12
8/9/2012	14.7	50.9	4.6	29.8	-47.3	132	1885	1229					1,885	16.1	1893.58	7496.58
8/10/2012	15.3	50.3	4.1	30.3	-47.2	129	1897	1274					1,897	16.1	1886.41	7565.41
8/11/2012	17.2	52.4	3.2	27.2	-47.4	130	1886	1234					1,886	16.1	1767.43	7250.43
8/12/2012	16.6	61.1	1.3	21	-55	140	1770	1180					1,770	16.4	1756.28	6526.28
8/13/2012	16.3	58	2.3	23.4	-56.1	132	1790	1207					1,790	16.4	1756.06	7216.06
8/14/2012	17	56.4	2.3	24.3	-56	132	1800	1237					1,800	16.4	1769.94	7419.94
8/15/2012	19.6	59.5	0.8	20.1	-55.3	142	1771	1249					1,771	16.4	1794.08	7017.08
8/16/2012	17.6	57.9	1.6	22.9	-56	132	1766	1278					1,766	16.4	1723.35	7583.35
8/17/2012	16.3	56.4	2	25.3	-55.9	132	1738	1148					1,738	16.4	1738.9	7440.9
8/18/2012	16.9	56.5	2.2	24.4	-54.1	135	1791	1157					1,791	16.4	1909.41	7596.41
8/19/2012	19.6	57.8	1.2	21.4	-55.7	132	1753	1188					1,753	19	1765.22	7198.22
8/20/2012	18.8	57.2	1.7	22.3	-55.6	134	1731	1262					1,731	19	1721.19	7202.19
8/21/2012	16.8	54.4	2.6	26.2	-55.5	133	1773	1203					1,773	19	1338.2	6930.2
8/22/2012	17.6	57.1	1.7	23.6	-54.8	130	1835	1228					1,835	19	1831.58	7313.58
8/23/2012	17.5	56.5	1.6	24.4	-57.6	130	1869	1215					1,869	19	1849	7572
8/24/2012	16.3	56.8	2.5	24.4	-61.1	136	1976	1294					1,976	19	1960.46	7958.46
8/25/2012	17.3	54.8	2.5	25.4	-61	135	1967	1313					1,967	19	1986.47	7908.47
8/26/2012	17.7	55.9	2.6	23.8	-61.3	132	2009	1310					2,009	15.7	2015.86	7949.86
8/27/2012	15.9	54.3	2.5	27.3	-61.1	130	1960	1265					1,960	15.7	1959.93	7830.93
8/28/2012	15.5	57.4	2.6	24.5	-60.6	130	1993	1347					1,993	15.7	2006.21	7996.21
8/29/2012	15.9	56.6	3	24.5	-68.9	130	2208	1300					2,208	15.7	2201.02	8310.02
8/30/2012	14.4	54.5	3.7	27.4	-70.1	128	2192	1332					2,192	15.7	2181.25	8275.25
8/31/2012	14.2	53.8	3.9	28.1	-71.1	128	2169	1344					2,169	15.7	2189.22	8432.22
9/1/2012	15.2	54	3.6	27.2	-71	124	2209	1145					2,209	15.7	2162	8422
9/2/2012	15.8	54.1	3.7	26.4	-71.6	120	2159	1345	2,159				2,159	14.7	2148.79	8291.79
9/3/2012	14.4	57.1	3.2	25.3	-70.2	130	2144	1302					2,144	14.7	2143.36	8437.36
9/4/2012	14.9	57	3.2	24.9	-70.4	126	2156	1381					2,156	14.7	2142.8	8390.8
9/5/2012	15.3	56	3.3	25.4	-71	124	2174	1309	2,174				2,174	14.7	2164.14	8313.14
9/6/2012	14.1	55.2	3.6	27.1	-70.4	127	2144	1395					2,144	14.7	2050.95	8372.95
9/7/2012	16.8	58.9	1.8	22.5	-69.1	134	2170	1320					2,170	14.7	2194.05	8721.05
9/8/2012	14.2	54	4	27.8	-70.7	122	2192	1323					2,192	14.7	2167.82	8310.82
9/9/2012	14	54.1	3.8	28.1	-70.7	126	2178	1333					2,178	14.4	2152.45	8465.45
9/10/2012	14.3	53.6	3.9	28.2	-70.9	125	2154	1333					2,154	14.4	2158.12	8454.12
9/11/2012	14.1	54	3.8	28.1	-71.1	121	2203	1316					2,203	14.4	2183.63	8385.63
9/12/2012	14.1	53.7	3.8	28.1	-71	122	2175	1360					2,175	14.4	2191.26	8522.26
9/13/2012	14.6	54.8	3.4	27.2	-69.5	120	2199	1324					2,199	14.4	2193.66	8031.66
9/14/2012	13.6	51.9	4.4	30.1	-68.7	116	2194	1330					2,194	14.4	2123.39	7970.39
9/15/2012	15.8	59.4	1.9	22.9	-64.4	108	2093	1320	2,093				2,093	14.4	1598.87	8341.87
9/16/2012	15.2	56.8	2.9	25.1	-61.4	120	1980	1264					1,980	14.7	1967.65	8054.65
9/17/2012	14.6	54.6	3.8	27	-61.4	120	1934	1293					1,934	14.7	1921.85	8305.85
9/18/2012	13.1	52.6	4.8	29.5	-61.5	116	2003	1318					2,003	14.7	1930.82	8529.82
9/19/2012	14.8	56.9	3.3	25	-59.6	126	1902	1330					1,902	14.7	1883.6	8220.6
9/20/2012	13.9	55.2	3.8	27.1	-59.8	120	1859	1244					1,859	14.7	2033.2	8526.2
9/21/2012	14.2	55.7	3.7	26.4	-64.1	120	2139	1280					2,139	14.7	2135.42	8277.42
9/22/2012	14.2	53.4	4	28.4	-63.8	128	2133	1316					2,133	14.7	2164.57	8073.57
9/23/2012	16.1	54.8	2.5	26.6	-62.7	128	2167	1305	2,167				2,167	14.9	2177.31	7916.31
9/24/2012	15.8	61.9	1.3	21	-37	124	1316	1312					1,316	14.9	2020.9	8122.9
9/25/2012	14.8	57.5	3.1	24.6	-65.8	118	2217	1257	2,217				2,217	14.9	2140.01	9108.01
9/26/2012	15.1	58.6	2.4	23.9	-66.2	120	2158	1342					2,158	14.9	2116.01	8727.01
9/27/2012	13.2	54.3	4.2	28.3	-67.8	116	2194	1329					2,194	14.9	2080.27	8579.27
9/28/2012	14.1	56.3	3.5	26.1	-66.2	118	2314	1290	2,314				2,314	14.9	2424.34	7656.34
9/29/2012	15.6	59.8	1.8	22.8	-63.9	133	2306	1437					2,306	14.9	2311.98	8817.98
9/30/2012	16.6	60	1.7	21.7	-63.7	130	2313	1383					2,313	16	2216.35	8389.35
10/1/2012	16	61	2	21	-62.8	120	2212	1403					2,212	16	1921	8636
10/2/2012	15.1	60	2.6	22.3	-62.1	120	2242	1375					2,242	16	2222.46	8437.46
10/3/2012	14.4	49.6	4.5	31.5	-47.4	128	1930	1288					1,930	16	1983.86	11096.86
10/4/2012	14.8	54.8	3.8	26.6	-35	120	1890	1269					1,890	16	1919.07	9161.07
10/5/2012	17.7	61.6	1.7	19	-38.2	126	1836	1269					1,836	16	2115.56	9623.56
10/6/2012	16.2	58.6	2.7	22.5	-37.7	126	1729	1297					1,729	16	1704.82	9004.82
10/7/2012	16.6	60.8	1.8	20.8	-35.6	128	1719	1324					1,719	16.4	1733.19	9611.19
10/8/2012	16.6	59.5	2.3	21.6	-36.4	128	1625	1189					1,625	16.4	1681.9	9034.9
10/9/2012	15	59.1	2.8	23.1	-32	130	1715	1287					1,715	16.4	1605.28	8739.28

Date	Candlestick Flare FL-100 (Flare Sta 2)								Flare Sta #3 FL-120		Flare Sta #1 FL-140		Total Utility Flare Flow	East Side Flare		Total Flow
	CH4	CO2	O2	Bal.	Press./Vac.	Gas Inlet Temp (°F)	Flow (scfm)	Flare Temp.	Flow (scfm)	Flare Temp.	Flow (scfm)	Flare Temp.	Flow (scfm)	CH4	Flow (scfm)	scfm
12/16/2012	14.3	50.5	5.2	30	-44.7	124	1451		1149				1,451	13.9	1561.4	6874.4
12/17/2012	13.5	49.1	5.7	31.7	-47	95	1612		1326				1,612	13.9	1652.88	7061.88
12/18/2012	13	48.2	6.1	32.7	-47.8	90	1597		1390				1,597	13.9	1745.62	6855.62
12/19/2012	15.1	47.2	5.3	32.4	-45.8	100	1782		1372				1,782	13.9	1622.55	7239.55
12/20/2012	15.1	57.6	3.9	23.4	-44	98	1602		1074				1,602	13.9	1503.98	7099.98
12/21/2012	12.1	45.4	6.3	36.2	-43.2	75	1551		1226				1,551	13.9	1592.09	7008.09
12/22/2012	13.6	54.4	5.1	26.9	-43.5	90	1550		1145				1,550	13.9	1929.84	7395.84
12/23/2012	14.1	51	4.7	30.2	-47.8	99	1969		1227				1,969	13.8	1999.6	7779.6
12/24/2012	13.8	51.2	5.2	29.8	-47.7	90	2059		1131				2,059	13.8	1890.03	7521.03
12/25/2012	14.2	51.6	4.2	30	-46.3	95	1895		1242				1,895	13.8	1797.74	7206.74
12/26/2012	15	58.4	3.7	22.9	-46.1	91	1956		1231				1,956	13.8	1635.39	6954.39
12/27/2012	15	53.2	3.8	28	-45.3	102	1662		1137				1,662	13.8	1565.15	6957.15
12/28/2012	15.3	55.1	3.7	25.9	-44.9	105	1543		1246				1,543	13.8	1619.54	6926.54
12/29/2012	14.6	54.9	4.1	26.4	-45.1	98	1664		1066				1,664	13.8	1505.65	7004.65
12/30/2012	14	54.3	4	27.7	-44.3	109	1523		1067				1,523	14.5	1421.63	6897.63
12/31/2012	15.1	52.7	4.3	27.9	-43.3	110	1442		1119				1,442	14.5	1464.39	7111.39
1/1/2013	14.1	54.7	4.7	26.5	-42.8	102	1418		1188				1,418	0		5251
1/2/2013	14.8	51.4	4.9	28.9	-43	106	1378		1077				1,378	0		5329
1/3/2013	15.9	52	4.2	27.9	-39	102	1468		1302				1,468	0		5578
1/4/2013	16.1	47.9	5.3	30.7	-39	104	1393		1163				1,393	0		5109
1/5/2013	16.5	48	5.5	30	-39.1	92	1321		1353				1,321	0		5089
1/6/2013	16.3	49	5.4	29.3	-39.4	92	1358		1321				1,358	0		4852
1/7/2013	16.2	53.3	4.4	26.1	-38.1	90	1265		1347				1,265	0	1210.959259	5970.959259
1/8/2013	16.4	52.7	4.1	26.8	-38.6	92	1247		1167				1,247	0	1246.603472	5912.603472
1/9/2013	14.4	55.3	4.1	26.2	-37.2	100	1203		1071				1,203	0	1234.339583	6429.339583
1/10/2013	15.8	53.3	4.6	26.3	-37.2	100	1243		1321				1,243	0	1301.010965	6971.010965
1/11/2013							1302		968				1,302	0		4713
1/12/2013													0	0		4388
1/13/2013							1221		1036				1,221	0	1473.770774	6935.770774
1/14/2013	16.2	51.5	4.5	27.8	-29.1	90	1394		1318				1,394	0	1433.536607	5731.536607
1/15/2013	17.5	57.2	3.3	22	-26.7	102	1401		1223				1,401	0	1421.910417	6067.910417
1/16/2013	17.4	53.8	3.7	25.1	-26.3	94	1316		1302				1,316	0	1388.153472	5826.153472
1/17/2013	16.8	51.7	4.3	27.2	-21.4	80	1514		1280				1,514	0	1484.151389	10800.15139
1/18/2013	19	58.1	2.5	20.4	-21.2	105	1413		1136				1,413	0	1389.422272	5584.422272
1/19/2013													0	0		4064
1/20/2013													0	0		1888
1/21/2013	14.1	52.4	4.8	28.7	-27.4	76	1411		1089				1,411	0	1282	3445
1/22/2013							1894		1028				1,894	0		9289
1/23/2013							730		1575				730	0		4330
1/24/2013	11.7	53	5.3	30	79.5	82	1271		894				1,271	0		4677
1/25/2013							3900		826				3,900	0		7369
1/26/2013							3901		896				3,901	0		7401
1/27/2013							3901		894				3,901	0		7243
1/28/2013							3900		1028				3,900	0		7714
1/29/2013	12.5	60.2	3.1	24	111.6	105	1074		1152				1,074	0		1771
1/30/2013	14.2	55.7	3.9	26.2	74.4	103	806		1049				806	0		4365
1/31/2013	14.3	58.8	3.2	23.7	49.3	80	820		902				820	0		5140
2/1/2013	14.2	61.3	2.4	22.1	74.9	90	1452		974				1,452	0		5424
2/2/2013	13.6	58.7	3.6	24.1	25.1	81	1483		1014				1,483	0		5734
2/3/2013	12.7	56.4	4.2	26.7	40.2	80	868		1151				868	0		5878
2/4/2013	14	61.5	2.7	21.8	46.2	100	814		958				814	0		6622
2/5/2013	14.3	58.8	3.2	23.7	49.3	80	820		902				820	0		6000
2/6/2013	12.8	55.2	4.6	27.4	75.1	110	981		800				981	0		6658
2/7/2013							1089		836				1,089	0		6203
2/8/2013	12	57.1	4.5	26.4	57.8	80	832		1053				832	0		5597
2/9/2013	12.5	55.8	4.5	27.2	83.5	90	994		857				994	0		6154
2/10/2013	13.2	60.6	2.6	23.6	89.6	90	1080		1265				1,080	0		6009
2/11/2013	14.2	56.7	4.6	24.5	72.7	100	920		1023				920	0		6540
2/12/2013	11.9	55.8	4.5	27.8	64.5	90	950		695				950	0		6140
2/13/2013	12.3	57.4	4	26.3	78	92	965		860				965	0		6021
2/14/2013							1035		977				1,035	0		5968
2/15/2013							941		1123				941	0		5895
2/16/2013	12.3	56.2	3.5	28	70.1	72	1026		966				1,026	0		5679
2/17/2013	12.9	57.6	3	26.5	83.5	90	1090		1144				1,090	0		5898
2/18/2013	14.6	60.1	2.7	22.6	68.3	100	1060		1130				1,060	0		6317
2/19/2013	13	56.8	4.2	26	61.8	70	950		1217				950	0		5633
2/20/2013	13	57.6	3.7	25.7	59.1	60	951		813				951	0		5369

Date	Candlestick Flare FL-100 (Flare Sta 2)								Flare Sta #3 FL-120		Flare Sta #1 FL-140		Total Utility Flare Flow	East Side Flare		Total Flow
	CH4	CO2	O2	Bal.	Press./Vac.	Gas Inlet Temp (°F)	Flow (scfm)	Flare Temp.	Flow (scfm)	Flare Temp.	Flow (scfm)	Flare Temp.	Flow (scfm)	CH4	Flow (scfm)	scfm
2/21/2013	13.1	62.8	3.5	20.6	65	60	1021		863				1,021	0		5548
2/22/2013	13.3	62	3.7	21	70.4	80	1150		1088				1,150	0		5813
2/23/2013	13.6	62.7	3.3	20.4	71.4	85	1011		891				1,011	0		5496
2/24/2013	13.4	62.5	2.8	21.3	85.4	105	1015		1088				1,015	0		5828
2/25/2013	13	60.5	2.6	23.9	87.2	100	1080		1159				1,080	0		5717
2/26/2013	14.1	63.5	2.1	20.3	59.5	75	935		889				935	0		5626
2/27/2013	15	59.3	3.1	22.6	40.4	60	818		1226				818	0		4433
2/28/2013	13.3	60.1	3.4	23.2	57.7	72	908		1218				908	0		4995
3/1/2013	14.3	66.1	1.9	17.7	55.8	70	848		952				848	0		4966
3/2/2013	14.9	64.3	2.2	18.6	60.4	70	906		1098				906	0		5401
3/3/2013	13	61	3	23	78.7	100	874		708				874	0		5764
3/4/2013	13.3	66.6	2.6	17.5	78.6	100	913		1247				913	0		5937
3/5/2013	13.6	65.6	3.2	17.6	72.1	80	976		1231				976	0		5998
3/6/2013	12.9	62.4	3.9	20.8	74.8	90	1012		1149				1,012	0		5709
3/7/2013	13.6	64.6	2.6	19.2	74.2	110	879		974				879	0		5761
3/8/2013	13.1	63.3	3	20.6	81.9	100	957		1080				957	0		5863
3/9/2013	15.3	64.9	1.5	18.3	74.2	100	915		1266				915	0		6015
3/10/2013	14.2	65.5	2.1	18.2	76.2	80	1073		1015				1,073	0		6065
3/11/2013	13.2	60.2	4	22.6	50.7	90	1178		1165				1,178	0		6339
3/12/2013	12.9	54	3.6	29.5	65.5	90	1202		1088				1,202	0		6508
3/13/2013	11.7	51.6	4.8	31.9	79.1	90	1332		1097				1,332	0		6412
3/14/2013	13.7	58.3	2.5	25.5	32	85	768		1174				768	0		5932
3/15/2013	13.1	60.5	2.7	23.7	73	120	1284		943				1,284	0		6842
3/16/2013	14.2	56.9	2.7	26.2	75.8	100	1381		1008				1,381	0		6091
3/17/2013	13.1	53.7	3.7	29.5	66.7	90	1842		985				1,842	0		6368
3/18/2013	12.8	57.9	3.6	25.7	70.1	90	2009		1219				2,009	0		6496
3/19/2013	16	49.5	5.4	29.1	83.3	90	1578		1125				1,578	0		6137
3/20/2013	14.9	52	4.7	28.4	53.9	80	1167		1268				1,167	0		6301
3/21/2013	12.2	59.2	1.8	26.8	48	80	1383		789				1,383	0		5569
3/22/2013	11.5	54.7	4	29.8	77.2	100	1339		830				1,339	0		6219
3/23/2013	13.4	71.8	2.3	12.5	45.6	95	1247		1068				1,247	0		7066
3/24/2013							1099		1191				1,099	0		6216
3/25/2013	12.2	60.8	3.8	23.2	44.5	70	1177		1138				1,177	0		6288
3/26/2013	12.1	52.9	4.5	30.5	53.5	90	1112		1075				1,112	0		6610
3/27/2013	13.9	56.8	3.2	26.1	55.5	100	1167		791				1,167	0		6604
3/28/2013	11	55.2	4.5	29.3	68.7	100	1322		977				1,322	0		6873
3/29/2013	12.1	57.8	3.7	26.4	62.7	120	1898		885				1,898	0		7246
3/30/2013	13.4	57.4	2.8	26.4	102	90	1238		1125				1,238	0		6562
3/31/2013	13.4	60.8	2.3	23.5	72.2	110	1970		945				1,970	0		6837
4/1/2013	11.9	54	4.9	29.2	39.6	100	1994		1066				1,994	0		7033
4/2/2013	11.8	53	4.4	30.8	44.5	90	1655		780				1,655	0		6746
4/3/2013	12.5	53.3	4.7	29.5	55.4	90	1728		1001				1,728	0		7112
4/4/2013	13.5	55.9	3.8	26.8	58	120	2008		930				2,008	0		7501
4/5/2013	13.1	57.1	3.4	26.4	60.5	120	2196		800				2,196	0		7231
4/6/2013	15	59.6	2	23.4	61.6	124	1889		1266				1,889	0		6641
4/7/2013													0			
4/8/2013	11.4	58.4	4.6	25.6	54.1	130	1877		1034				1,877	0		7153
4/9/2013	13.9	58.8	2.5	24.8	58.3	110	2156		1305				2,156	0		7006
4/10/2013	12.9	58.6	3	25.5	55	110	1279		969				1,279	0		5894
4/11/2013	14.7	57.1	2.8	25.4	29.1	90	1335		1093				1,335	0		5615
4/12/2013	13.6	57	3.5	25.9	66.3	90	1441		1223				1,441	0		5503
4/13/2013	13.6	56	3.3	27.1	56.2	106	1259		944				1,259	0		6107
4/14/2013	12.9	57.3	3.4	26.4	50	120	2558		1239				2,558	0		6544
4/15/2013	14	58	3.1	24.9	63.9	100	2135		809				2,135	0		6014
4/16/2013	13.3	56.2	4	26.5	58.2	80	2005		952				2,005	0		5351
4/17/2013	14.8	55.1	3.5	26.6	56.8	104	2413		827				2,413	0		5756
4/18/2013	14.6	55.1	4.4	25.9	38.4	75	1808		1256				1,808	0		5954
4/19/2013	13.5	52.6	4.7	29.2	36.8	76	2032		1119				2,032	0		6331
4/20/2013	12.9	55	3.9	28.2	36.8	90	1753		992				1,753	0		6329
4/21/2013	13.2	54.1	3.7	29	38.3	90	1773		1090				1,773	0		6496
4/22/2013	12.9	63.9	3.2	20	41.2	106	2011		963				2,011	0		7205
4/23/2013	13.7	56.5	3.4	26.4	53.1	90	1660		901				1,660	0		6462
4/24/2013	12.3	53.4	4.5	29.8	55.4	88	1675		1099				1,675	0		6334
4/25/2013	12.3	51.9	4.7	31.1	58.2	92	1687		968				1,687	0		6286
4/26/2013	9.9	48.5	6.3	35.3	63.4	92	1620		1128				1,620	0		6042
4/27/2013	11.5	55.2	3.7	29.6	47.1	88	1029		908				1,029	0		6145
4/28/2013	10.8	55.2	4.1	29.9	47.7	87	1345		985				1,345	0		6588

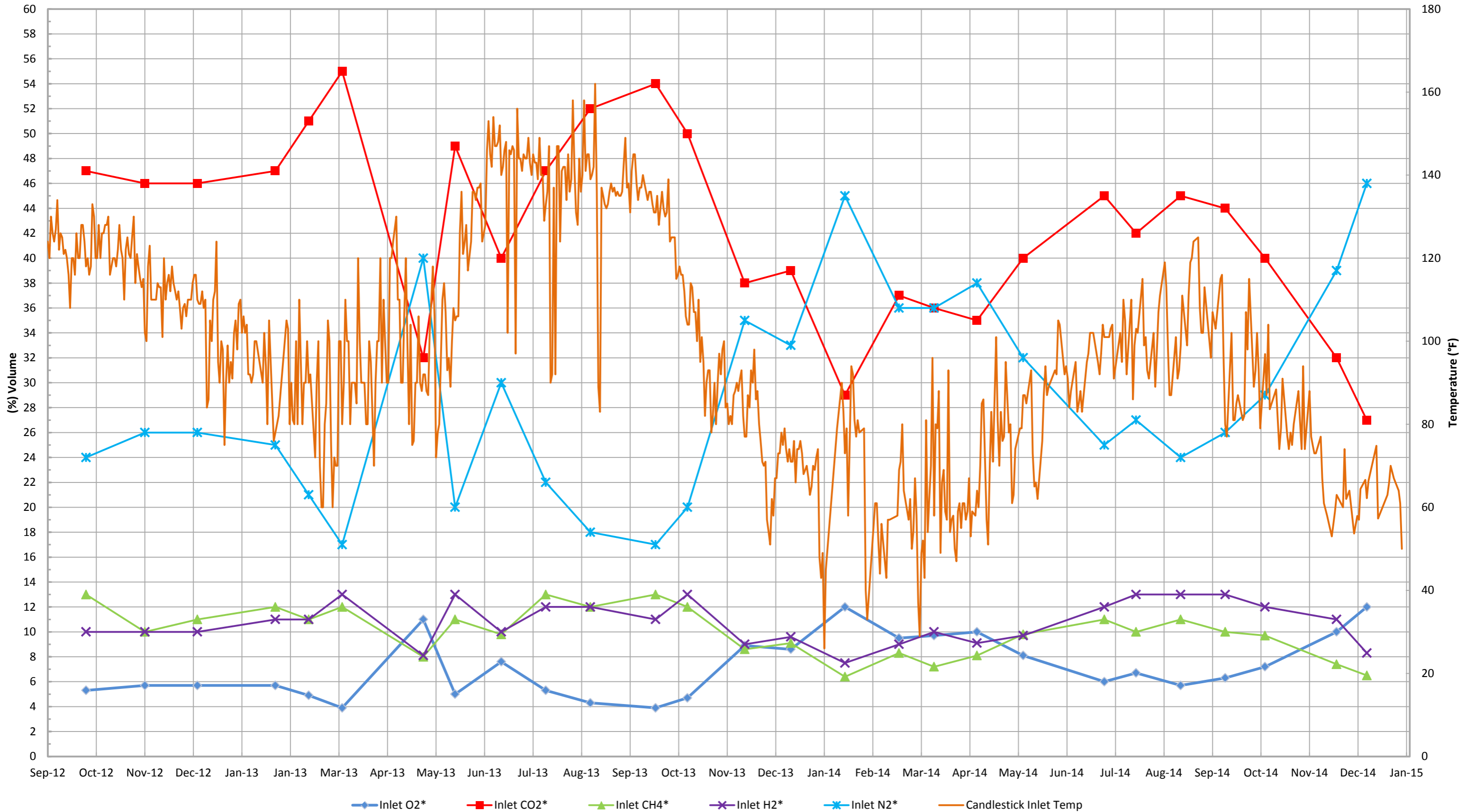
Date	Candlestick Flare FL-100 (Flare Sta 2)								Flare Sta #3 FL-120		Flare Sta #1 FL-140		Total Utility Flare Flow	East Side Flare		Total Flow
	CH4	CO2	O2	Bal.	Press./Vac.	Gas Inlet Temp (°F)	Flow (scfm)	Flare Temp.	Flow (scfm)	Flare Temp.	Flow (scfm)	Flare Temp.	Flow (scfm)	CH4	Flow (scfm)	scfm
4/29/2013	12.5	51.4	4.1	32	45.6	102	1982		928				1,982	0		7050
4/30/2013	13.3	58.7	2.7	25.3	49.5	110	2124		1225				2,124	0		7278
5/1/2013	12.3	59.6	2	26.1	44	118	2168		831				2,168	0		7298
5/2/2013	12.8	57.2	3	27	45	106	1752		1110				1,752	0		7014
5/3/2013	13.1	52.8	4.4	29.7	50.4	72	1779		1078				1,779	0		6844
5/4/2013	12.9	54.1	3.8	29.2	52.1	78	1810		850				1,810	0		6996
5/5/2013	13	54.8	3.9	28.3	54.7	80	1707		976				1,707	0		6826
5/6/2013	12.9	56	3.4	27.7	53	96	1730		1124				1,730	0		7059
5/7/2013	13.4	60.7	2.5	23.4	43.9	110	2235		956				2,235	0		7487
5/8/2013	13	58.9	2.9	25.2	51.1	114	2176		458				2,176	0		7476
5/9/2013	13.4	55.4	3.8	27.7	47.6	107	2110		785				2,110	0		7380
5/10/2013	12	54	4.7	29.3	43.4	93	1527		1005				1,527	0		7004
5/11/2013	14	54	5.4	26.6	43.1	96	1642		1154				1,642	0		6996
5/12/2013	11.8	51.4	5	31.8	43.8	89	1900		1100				1,900	0		7349
5/13/2013	12.5	53.6	4.3	29.6	47.5	100	1810		892				1,810	0		7227
5/14/2013	12.7	58.6	3.5	25.2	51.5	108	2121		1097				2,121	0		7627
5/15/2013	13.7	56.1	3.5	26.7	47.1	105	1920		1022				1,920	0		7219
5/16/2013	11.9	56.2	3.8	28.1	44.5	106	2242		704				2,242	0		7520
5/17/2013	12.2	57.1	3.5	27.2	50.9	106	2121		909				2,121	0		7258
5/18/2013	12.2	58.1	3.1	26.6	50.3	126	2141		842				2,141	0		7392
5/19/2013	11.8	58.4	3.7	25.6	44.3	136	2375		962				2,375	0		7614
5/20/2013	12	58	3.2	26.5	50.2	121	1881		1215				1,881	0		6947
5/21/2013	11.6	58.9	3.4	26.1	47	124	2112		1009				2,112	0		7194
5/22/2013	12.3	58.4	3	26.3	46.9	128	2337		1171				2,337	0		7414
5/23/2013	12.2	54.6	4	29.2	47.5	117	2214		1271				2,214	0		7094
5/25/2013	10.6	53.8	5.1	30.5	46.3	124	2007		1047				2,007	0		7170
5/26/2013	10.9	56.3	3.9	28.9	50.2	136	2488		1038				2,488	0		7729
5/27/2013	10.9	52.5	4.8	31.8	48.6	136	2601		894				2,601	0		7814
5/28/2013	12	56.3	3.6	28.1	45.4	134	2034		1080				2,034	0		7277
5/29/2013	11.2	57.9	3.9	27	41.7	137	2321		1210				2,321	0		7456
5/30/2013	10.7	53.1	5.1	31.1	40.8	137	2828		1057				2,828	0		7731
5/31/2013	11	53	4.5	30.5	40.3	138	2741		540				2,741	0		7338
6/1/2013	11.3	56.1	3.8	28.2	41.2	124	2873		1220				2,873	0		7501
6/2/2013	10.7	57.6	3.8	27.9	50.3	126	2245		1053				2,245	0		7431
6/3/2013	12.2	60.4	3.1	24.3	57.3	128	2364		959				2,364	0		7609
6/4/2013	12.7	58.7	2.5	26.1	50.1	146	2713		822				2,713	0		7654
6/5/2013	12.8	60.6	1.8	24.8	54.1	153	1922		703				1,922	0	586	7821
6/6/2013	11.6	54.4	4.3	29.7	52.3	145	1918		1139				1,918	0	529	7735
6/7/2013	12.9	49.1	4.6	33.4	54.7	142	1809		997				1,809	0	734	7519
6/8/2013	12.7	58.3	2.4	26.6	48.9	154	2592		780				2,592	0	596	8285
6/9/2013	11.9	54.9	4.3	28.9	56.8	147	2038		1081				2,038	0	864	7835
6/10/2013	11.5	49.1	5.7	33.7	51.3	147	1589		1222				1,589	0	1079	7982
6/11/2013	10.1	47.5	6.6	35.8	53.3	148	1457		908				1,457	0	1028	7730
6/12/2013	11.5	47.5	5.2	35.8	52.6	152	2110		979				2,110	0	1056	8363
6/13/2013	10	43.9	6.5	39.6	54.7	140	1653		963				1,653	0	488	7435
6/14/2013	10.6	47.4	6.5	35.5	63.2	142	1214		912				1,214	0	1119	7511
6/15/2013	11	50.5	5.3	33.2	60.7	146	1269		943				1,269	0	872	7394
6/16/2013	11.9	58.1	3.4	26.6	54.2	148	2105		891				2,105	0	745	7960
6/17/2013	11.6	44.4	6.1	37.9	54.1	102	1664		480				1,664	0	1051	6877
6/18/2013	11.9	54.9	4.9	58.3	58.3	146	1496		981				1,496	0	1141	7643
6/19/2013	13.1	58.8	3.3	24.8	64	145	1004		1017				1,004	0	1409	7691
6/20/2013	12.8	59	2.2	26	64.4	147	1196		1134				1,196	0	1184	7757
6/21/2013	11.6	55.5	3.9	26	63.5	146	1891		1065				1,891	0	1177	8175
6/22/2013	10.5	40.9	7.9	40.7	47.8	97	2301		1392				2,301	0	1380	7545
6/23/2013	9.4	40.5	7.1	43	47.9	156	2987		1353				2,987	0	1293	8089
6/24/2013	12.4	42	6.8	38.8	46.9	144	3046		1254				3,046	0	1443	7986
6/25/2013	10.9	49.6	5.1	34.4	47.1	144	3046		885				3,046	0	1382	8317
6/26/2013	8.9	40.6	6	44.5	47.5	141	2725		513				2,725	0	1391	7919
6/27/2013	12.1	45.5	4.9	37.5	53.5	145	2605		854				2,605	0	1334	7568
6/28/2013	11	53.7	5.5	29.8	56.2	144	2817		791				2,817	0	1326	7996
6/29/2013	11.4	45.2	5.9	37.5	37.5	144	2566		956				2,566	0	1386	7646
6/30/2013	12.2	42.8	6.9	38.1	48.8	149	2911		1250				2,911	0	1432	8037
7/1/2013	11.3	46.9	6.2	35.6	53.7	143	2891		855				2,891	9.7	1271	7456
7/2/2013	9.1	42.5	7	41.4	62	140	2708		1341				2,708	7.5	1514	7531
7/3/2013	12.4	48.3	5.7	33.6	56.9	145	2610		1094				2,610			6120
7/4/2013	10.3	45.5	4.4	39.8	55.8	143	2901		1153				2,901			6397
7/5/2013	12.6	47.4	6.1	33.9	52.9	143	2884		1121				2,884	10.9	1501	7899

Date	Candlestick Flare FL-100 (Flare Sta 2)								Flare Sta #3 FL-120		Flare Sta #1 FL-140		Total Utility Flare Flow	East Side Flare		Total Flow
	CH4	CO2	O2	Bal.	Press./Vac.	Gas Inlet Temp (°F)	Flow (scfm)	Flare Temp.	Flow (scfm)	Flare Temp.	Flow (scfm)	Flare Temp.	Flow (scfm)	CH4	Flow (scfm)	scfm
7/6/2013	13	47.6	6.2	33.2	51.4	139	2544	926					2,544	10.8	1535	7970
7/7/2013	14.7	50.5	5.1	29.7	39.5	149	2328	635					2,328	8.3	1364	7038
7/8/2013	10.8	50.3	5.1	33.8	33.1	140	2392	1066					2,392	11.9	1580	7768
7/9/2013	10.6	43.2	4.9	41.3	56.9	140	2279	1179					2,279	11.2	1504	7764
7/10/2013	12.6	43.7	6.1	37.6	61.4	129	2004	1360					2,004	9.1	1570	7534
7/11/2013	10.5	30.5	6	31.7	1.3	133	2041	1123					2,041	7.2	1398	7426
7/12/2013	12.9	54.5	4.6	28	35	136	2195	1354					2,195	8.9	1516	7632
7/13/2013	13.3	58.8	2.8	25.1	53.4	147	2701	1227					2,701	12.4	1265	7601
7/14/2013	12.7	51	4	26.3	51.3	90	2188	992					2,188	11.6	1305	6818
7/15/2013	13.4	60.6	3.3	22.7	54.7	92	2027	1092					2,027	12.3	1204	7185
7/16/2013	11.7	54.5	4.5	29.3	63.9	137	1383	938					1,383			5123
7/17/2013	12.3	55.8	4.7	27.2	42.6	92	1416	900					1,416	15.1	1023	9730
7/18/2013	12.5	59.8	2.8	24.9	57.7	147	1066	906					1,066	13.8	1003	9310
7/19/2013	12.1	54.7	4.4	28.8	57.7	147	1142	906					1,142			5129
7/20/2013	12.7	53.1	4.9	29.3	63.4	124	957	835					957	18.7	900	8774
7/21/2013	13	60.3	3.1	23.1	62.3	141	1343	874					1,343	17.3	833	8965
7/22/2013	12.8	54.2	4.8	28.2	56.3	142	1512	866					1,512	14.8	1007	9467
7/23/2013	12.8	52.5	3.5	31.2	65.4	142	1597	753					1,597	13.2	1102	9311
7/24/2013	11.5	44.2	6	33.3	61	134	1609	831					1,609	16.3	1047	9588
7/25/2013	11.9	57.3	4.5	26.3	65.7	145	1551	817					1,551	20.6	805	9586
7/26/2013	11.7	50.6	5.9	31.3	-68.3	136	1612	870					1,612	15.2	936	9631
7/27/2013	12.9	53.7	4.8	28.6	65.6	139	1177	1133					1,177	17.6	759	8826
7/28/2013	13.1	54.2	4.1	28.6	68.1	158	949	1632					949	15	846	8930
7/29/2013	13.4	54.1	4	28.5	66	141	1241	1628					1,241	12.2	894	9471
7/30/2013	13.6	52.3	4.8	29.3	66.5	131	801	1602					801	17.4	939	8705
7/31/2013	13.6	55	4.3	27.1	70	128	1052	1661					1,052	18.1	935	9013
8/1/2013	13.9	56.3	3.3	26.5	68.6	144	1210	1607					1,210	0	962	9344
8/2/2013	13.6	57.2	3.3	25.9	66.8	136	1184	948					1,184	0	1017	9047
8/3/2013	13.7	52.8	4.2	29.3	67.3	140	1218	849					1,218	0	1014	9092
8/4/2013	12.9	53.3	4.2	29.6	68.3	158	1148	747					1,148	0	975	9059
8/5/2013	13.1	54.9	4	28	63.7	141	1138	997					1,138	0	946	9093
8/6/2013	14.8	57	3	25.2	66.5	145	1266	903					1,266	0	928	10186
8/7/2013	15.8	56.2	3.6	24.4	62.6	145	1286	877					1,286	0	1103	10379
8/8/2013	13.9	52.6	4.4	29.1	67.7	139	1381	761					1,381	0	990	10055
8/9/2013	14.6	54.3	3.8	27.3	64.4	140	1158	791					1,158	0	1074	10174
8/10/2013	14.8	54.6	4.2	26.4	68.3	142	1348	861					1,348	0	1043	10339
8/11/2013	14.1	53.9	3.9	28.1	65.6	162	1288	767					1,288	0	1122	10354
8/12/2013	14.5	54.7	4.2	26.6	69.7	136	1201	979					1,201	0	1080	10105
8/13/2013	13.4	56.8	4.7	25.1	74	89	1022	889					1,022	0	1061	9747
8/14/2013	13	51.5	5.2	30.3	69.7	83	1101	700					1,101	0	1174	9310
8/15/2013	13.9	55	4	27.1	67.7	137	1172	841					1,172	0	976	9867
8/16/2013	13.3	52.8	4.3	29.6	68.6	135	1141	840					1,141	0	845	9588
8/17/2013	13.6	57.4	3.8	25.2	42.3	133	1190	885					1,190	0	903	9902
8/18/2013	14.4	59.5	3.2	22.9	69.9	132	1318	904					1,318	0	902	10194
8/19/2013	14.2	55.7	4.3	25.8	72.6	133	1111	712					1,111	0	1055	10156
8/20/2013	13.5	55.4	4.6	26.5	69.6	136	1346	667					1,346	0	1043	10180
8/21/2013	13.9	59.1	4.1	22.9	72.8	138	960	799					960	0	1048	9514
8/22/2013	13.6	56.5	4.4	25.5	66.7	136	1372	770					1,372	0	888	9937
8/23/2013	14	58.5	4.3	23.2	66.3	137	1268	617					1,268	0	977	9647
8/24/2013	13.5	55.1	5.9	25.5	60.1	135	1272	790					1,272	0	1083	9597
8/25/2013	12.3	56.2	4.6	26.9	74	136	1335	741					1,335	0	1286	10244
8/26/2013	12.8	54	4.9	28.3	68.8	135	1302	773					1,302	0	1080	9738
8/27/2013	14.4	55.6	4.8	25.2	67.5	135	1263	857					1,263	0	1071	9719
8/28/2013	14	50.7	4.7	30.6	62.1	136	1230	726					1,230	0	1089	9300
8/29/2013	14.7	59.3	2.6	23.4	66.9	143	1277	891					1,277	0	989	10041
8/30/2013	14.7	64.9	3.1	17.3	61.4	149	1071	769					1,071	0	947	9340
8/31/2013	15.5	51.8	4.3	28.4	66.3	137	1093	758					1,093	0	1062	9099
9/1/2013	15.1	56.8	3.5	24.6	59.1	138	1001	715					1,001	0	1252	10258
9/2/2013	15.9	60.5	5	18.6	58.6	131	975	743					975	0	1205	10164
9/3/2013	14	54.1	3.1	28.8	61.1	141	760	675					760	0	1150	9848
9/4/2013	13.1	52.6	3	31.3	51.4	145	615	695					615	0	1211	9570
9/5/2013	12.4	58.6	3	26	58.9	145	572	731					572	0	1130	9591
9/6/2013	11.8	63.9	4.8	19.5	61	138	700	628					700	0	1055	9295
9/7/2013	11.9	54.9	5.6	27.6	56.3	134	737	717					737	0	1092	9528
9/8/2013	12.9	57.3	3.8	26	65.1	137	772	764					772	0	1065	9352
9/9/2013	13.1	57.2	3.5	26.2	60.5	137	713	756					713	0	1098	9747
9/10/2013	13.2	60.1	3.1	23.6	61.8	140	855	700					855	0	1060	9243

Date	Candlestick Flare FL-100 (Flare Sta 2)								Flare Sta #3 FL-120		Flare Sta #1 FL-140		Total Utility Flare Flow	East Side Flare		Total Flow
	CH4	CO2	O2	Bal.	Press./Vac.	Gas Inlet Temp (°F)	Flow (scfm)	Flare Temp.	Flow (scfm)	Flare Temp.	Flow (scfm)	Flare Temp.	Flow (scfm)	CH4	Flow (scfm)	scfm
9/4/2014	10.4	43.6	6.4	39.6	-47.6	105	2298	1390	3323	1214	3381	1479	9,002			9002
9/5/2014	9.3	39.4	7.9	43.4	-46	103	2320	1377	3321	1277	3467	1446	9,108			9108
9/6/2014							2009	1395	3271	1236	3115	1457	8,395			8395
9/7/2014							2102	1372	3256	1258	3212	1419	8,569			8569
9/8/2014	12.6	51.1	4.8	31.5	-47.7	115	2080	1382	3243	1216	3204	1434	8,526			8526
9/9/2014	11.7	52.3	5.3	30.7	-49.2	116	2037	1364	2960	1187	3526	1504	8,523			8523
9/10/2014	11	49.1	6.6	33.3	-49.6	95	1916	1346	2806	1179	3721	1457	8,443			8443
9/11/2014	10.8	44.8	7.5	36.9	-49.4	80	1799	1327	2651	1176	3450	1474	7,900			7900
9/12/2014	10.8	44	7.9	37.3	-49.6	77	1720	1312	2725	1155	3374	1475	7,819			7819
9/13/2014							1782	1335	2740	1138	3477	1449	7,999			7999
9/14/2014							1877	1355	2674	1127	3618	1449	8,169			8169
9/15/2014	11.7	48.2	6.1	34	-50.2	102	1928	1370	2654	1138	3595	1483	8,176			8176
9/16/2014	11.1	45	7.2	36.7	-50.4	81	1935	1356	2612	1167	3576	1448	8,123			8123
9/17/2014	11.3	44.9	7.3	36.5	-49.7	81	1927	1379	2704	1176	3503	1487	8,134			8134
9/18/2014	10.5	43.8	7.6	38.1	-50	85	2058	1364	2741	1247	3716	1467	8,515			8515
9/19/2014	10.4	43.4	7.3	38.9	-50.3	87	2111	1410	2801	1181	3769	1508	8,681			8681
9/20/2014							2259	1360	3125	1162	3156	1398	8,540			8540
9/21/2014							2119	1313	3156	1223	2785	1401	8,060			8060
9/22/2014	11.5	43.5	7.7	37.3	-49.5	81	2177	1388	3165	1269	2978	1403	8,320			8320
9/23/2014	9.9	43.3	8	38.8	-49.7	82	2210	1407	3257	1277	3008	1406	8,476			8476
9/24/2014	10	42	7.3	40.7	-50.2	107	2214	1443	3152	1258	2970	1402	8,336	415		8752
9/25/2014	9.5	41.2	8.2	41.1	-49.4	98	2215	1453	3049	1256	2981	1428	8,244	721		8966
9/26/2014	10.5	51.6	6.1	31.8	-49.7	115	2375	1418	3259	1282	3139	1414	8,772	231		9004
9/27/2014							2357	1392	3341	1273	3151	1405	8,850			8850
9/28/2014							2409	1393	3336	1270	3164	1402	8,909			8909
9/29/2014	10.6	44.2	7.4	37.8	-49.1	89	2244	1380	3105	1252	3025	1443	8,374	467		8841
9/30/2014	10.1	40.3	8.2	41.4	-49.5	93	2332	1383	3235	1318	3044	1405	8,611	233		8844
10/1/2014	10.6	44.3	7.3	37.8	-49.2	102	2322	1378	3331	1272	3027	1437	8,680	49		8729
10/2/2014	10.6	44.4	7.2	37.8	-48.6	93	2167	1364	3262	1318	2859	1401	8,288			8288
10/3/2014	10.4	43.5	7.9	38.2	-49.8	79	1983	1359	3138	1355	2690	1475	7,810			7810
10/4/2014							1932	1375	3078	1342	2691	1485	7,701			7701
10/5/2014							2042	1394	3205	1288	2772	1444	8,020			8020
10/6/2014	11.7	39.4	7.2	41.7	-49.08	96.9	2148	1376	3171	1326	2829	1469	8,148			8148
10/7/2014	10.7	45.9	7.3	36.1	-49.9	87	2109	1374	3206	1312	2824	1468	8,140			8140
10/8/2014	10.9	50.6	6.5	32	-49.3	104	2189	1377	3126	1275	2869	1469	8,184			8184
10/9/2014	4.2	59.5	6	30.3	-49.7	83.6	2043	1354	3124	1346	2727	1473	7,894			7894
10/10/2014							1953	1372	3093	1352	2625	1473	7,671			7671
10/11/2014							1949	1377	3073	1346	2629	1443	7,652			7652
10/12/2014							2020	1380	3062	1274	2647	1437	7,729			7729
10/13/2014	6.7	53.9	6.4	33	-50.37	88.4	2023	1353	3064	1273	2580	1448	7,666			7666
10/14/2014							1922	1360	3063	1322	2545	1478	7,530			7530
10/15/2014	10.4	43.4	8.1	38.1	-49.7	74	1952	1356	3035	1301	2587	1461	7,574			7574
10/16/2014	10.8	44.3	7.4	37.5	-49.7	79	2087	1388	3102	1266	2732	1465	7,921			7921
10/17/2014	10.8	45.6	6.8	36.8	-50	91	2066	1355	3099	1338	2665	1488	7,830			7830
10/18/2014							1961	1379	3065	1280	2585	1429	7,612			7612
10/19/2014							1992	1400	3061	1245	2620	1459	7,673			7673
10/20/2014	11.4	43.6	7.9	37.1	-49.9	77	1989	1328	3183	1303	2696	1456	7,868	28		7896
10/21/2014	10.9	42.9	8.4	37.8	-49.6	74	2078	1376	3091	1313	2712	1489	7,881			7881
10/22/2014	10.5	42.6	8.1	38.8	-49.9	78	2063	1395	3109	1247	2670	1463	7,842			7842
10/23/2014	10.3	43.4	8.2	38.1	-49.6	75	2052	1413	3095	1281	2654	1444	7,800			7800
10/24/2014	10.8	45.1	7.7	36.4	-49.5	80	2153	1396	3139	1274	2760	1462	8,052			8052
10/25/2014							2288	1385	3202	1282	2840	1455	8,330			8330
10/26/2014							2192	1387	3218	1278	2783	1488	8,193			8193
10/27/2014	10.6	43.1	7.5	38.8	-49.7	88	2217	1388	3219	1259	2774	1466	8,210			8210
10/28/2014	10.4	42.6	8	39	-49.6	81	2058	1375	3108	1325	2622	1443	7,788			7788
10/29/2014	10.3	43.5	7.8	38.4	-49.4	74	2003	1383	3076	1294	2584	1450	7,664	95		7759
10/30/2014	9.6	41.8	8.3	40.3	-50	94	1980	1436	3037	1294	2552	1481	7,569	307		7877
10/31/2014	9.9	41.1	8.7	40.3	-49.3	74	1955	1377	3079	1306	2498	1379	7,532			7532
11/1/2014							1959	1418	3066	1283	2555	1470	7,579			7579
11/2/2014							1944	1424	3135	1276	2496	1490	7,574			7574
11/3/2014	10.2	41.5	8.4	39.9	-49.7	88	2129	1409	3201	1271	2614	1512	7,944	41		7984
11/4/2014	11.5	41.2	8	39.3	-49.5	77	2007	1379	3213	1334	2524	1453	7,744			7744
11/5/2014	11	41.6	8.1	39.3	-49.9	75	2055	1391	3157	1323	2631	1457	7,843			7843
11/6/2014	10.6	40.7	8.5	40.2	-49.7	73	1950	1368	3148	1365	2488	1424	7,585			7585
11/7/2014	10.6	43.5	8	37.9	-49.7	73	2003	1402	3147	1275	2537	1455	7,687			7687
11/8/2014							2008	1374	3158	1348	2513	1425	7,680			7680
11/9/2014							2040	1398	3172	1285	2544	1437	7,756			7756

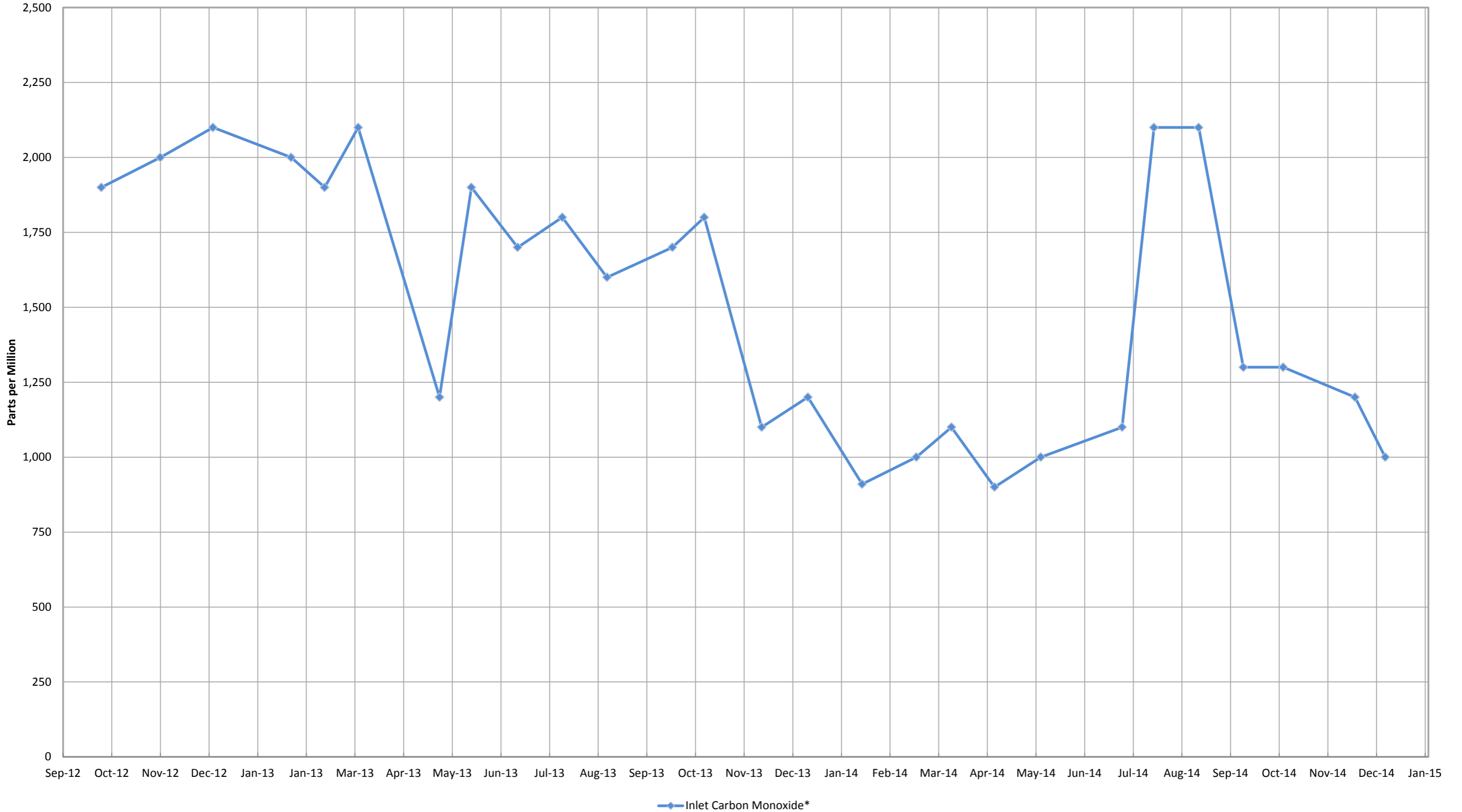
Date	Candlestick Flare FL-100 (Flare Sta 2)								Flare Sta #3 FL-120		Flare Sta #1 FL-140		Total Utility Flare Flow	East Side Flare		Total Flow
	CH4	CO2	O2	Bal.	Press./Vac.	Gas Inlet Temp (°F)	Flow (scfm)	Flare Temp.	Flow (scfm)	Flare Temp.	Flow (scfm)	Flare Temp.	Flow (scfm)	CH4	Flow (scfm)	scfm
11/10/2014	11.1	43.6	7.8	37.5	-49.7	77	2074	1398	3151	1257	2810	1491	8,034			8034
11/11/2014	9.3	40.3	9.1	41.3	-50	67	1844	1360	2929	1314	2655	1427	7,428			7428
11/12/2014	9.6	39.8	8.9	41.7	-49.6	61	1764	1364	2905	1280	2563	1461	7,232			7232
11/13/2014							1741	1357	2806	1291	2657	1513	7,204			7204
11/14/2014	9.5	40.2	8.5	41.8	-49.5	58	1969	1413	2740	1261	2539	1555	7,247			7247
11/15/2014							2154	1460	2728	1250	2440	1501	7,321			7321
11/16/2014							2090	1414	2772	1281	2419	1511	7,280			7280
11/17/2014	9.1	35.8	9.6	45.5	-49.9	53	1374	1081	2392	1173	2226	1299	5,992			5992
11/18/2014							1625	1365	2741	1257	2682	1283	7,048			7048
11/19/2014	10.2	40.4	8.4	41	-51	59	1849	1349	2472	1245	2400	1269	6,720		8	6729
11/20/2014	9.6	39.5	9.1	41.8	-50	63	1640	1218	2968	1191	2603	1211	7,210	22		7232
11/21/2014							2080	1428	2886	1202	2734	1368	7,700			7700
11/22/2014							2341	1504	3025	1184	2966	1354	8,333			8333
11/23/2014							2133	1436	2864	1197	3147	1347	8,145			8145
11/24/2014	9.8	40.1	9.5	40.6	-46.4	60	1821	1377	2537	1297	2859	1245	7,217			7217
11/25/2014	9.8	39.9	8.9	41.4	-46.8	74	1879	1391	2437	1179	2811	1331	7,127			7127
11/26/2014	9.8	39.8	9.2	41.2	-46.6	62	1958	1401	2474	1065	2811	1359	7,244			7244
11/27/2014							2050	1406	2193	1123	2733	1329	6,976			6976
11/28/2014	9.4	39.6	9.2	41.8	-47.3	64	2354	1430	2234	1094	2838	1353	7,426			7426
11/29/2014							2268	1435	2312	1116	2963	1339	7,543			7543
11/30/2014							2313	1433	2510	1157	3077	1306	7,901			7901
12/1/2014	7.5	37.7	10.9	43.9	-47.19	53.7	2179	1425	2453	1089	2896	1359	7,528			7528
12/2/2014							1956	1380	2411	1110	2689	1338	7,057			7057
12/3/2014	9.3	31.6	10.3	48.8	-44.09	57.9	1904	1422	2225	1206	2799	1377	6,928		131	7059
12/4/2014	9.5	39.6	8.8	42.1	-48.8	57	1891	1402	2151	1219	2812	1352	6,855		158	7012
12/5/2014	10.3	32.6	9.7	47.4	-51.04	64.4	2017	1424	2463	1237	2954	1361	7,433			7433
12/6/2014							1951	1422	2485	1185	2877	1362	7,312			7312
12/7/2014							2046	1476	2613	1189	3008	1413	7,666			7666
12/8/2014	9.5	29.5	11	50	-49.33	66.6	2016	1384	2719	1179	2984	1345	7,718		61	7780
12/9/2014	8.3	29.9	11.4	50.4	-51.22	62.2	2004	1410	2626	1216	2984	1377	7,614		21	7636
12/10/2014	8.4	30.3	10.8	50.5	-49.82	66.4	2001	1516	2507	1248	2970	1461	7,478		153	7631
12/11/2014							2055	1518	2660	1281	3192	1485	7,907		184	8091
12/12/2014							2192	1566	2688	1220	3110	1480	7,990		202	8192
12/13/2014							2338	1556	2845	1243	3352	1466	8,535			8535
12/14/2014							2333	1504	2783	1258	3279	1417	8,395			8395
12/15/2014	9.3	29.5	11	50.2	-50.24	74.8	2289	1466	2857	1304	3238	1398	8,384			8384
12/16/2014	7.3	26.3	12.7	53.7	-49.7	57.3	2389	1437	2714	1288	3038	1405	8,141			8141
12/17/2014							2350	1479	2633	1227	2841	1461	7,824		187	8011
12/18/2014							2504	1568	2575	1239	2997	1500	8,076			8076
12/19/2014							2326	1466	2418	1198	2745	1389	7,489		48	7537
12/20/2014							2077	1499	2804	1220	2485	1404	7,366			7366
12/21/2014							2131	1467	2964	1284	2510	1386	7,606			7606
12/22/2014	9.9	39.2	9	41.9	-49.5	63	2008	1374	2838	1257	2440	1356	7,286			7286
12/23/2014	8.8	38.1	9.3	43.8	-45	66	2286	1484	2956	1268	2519	1398	7,762			7762
12/24/2014	9.1	38.3	10.3	42.3	-49.4	70	2279	1459	3110	1316	2660	1421	8,049			8049
12/25/2014							2345	1517	3145	1281	2687	1440	8,177			8177
12/26/2014	8.1	32.7	10.5	48.7	-48.9	67	2400	1523	3102	1259	2682	1429	8,184			8184
12/27/2014							2255	1467	3003	1271	2585	1418	7,843			7843
12/28/2014							2203	1510	3033	1268	2546	1449	7,782			7782
12/29/2014	8	33.8	10.3	47.9	-49.9	64	2200	1548	3025	1263	2619	1485	7,845			7845
12/30/2014	7.7	32.8	10.9	48.6	-49.2	61	2212	1506	2871	1253	2668	1471	7,751			7751
12/31/2014	8	32.2	10.8	49	-50.5	50	2110	1525	2827	1219	2827	1497	7,764			7764

Inlet Gas and Temperature*



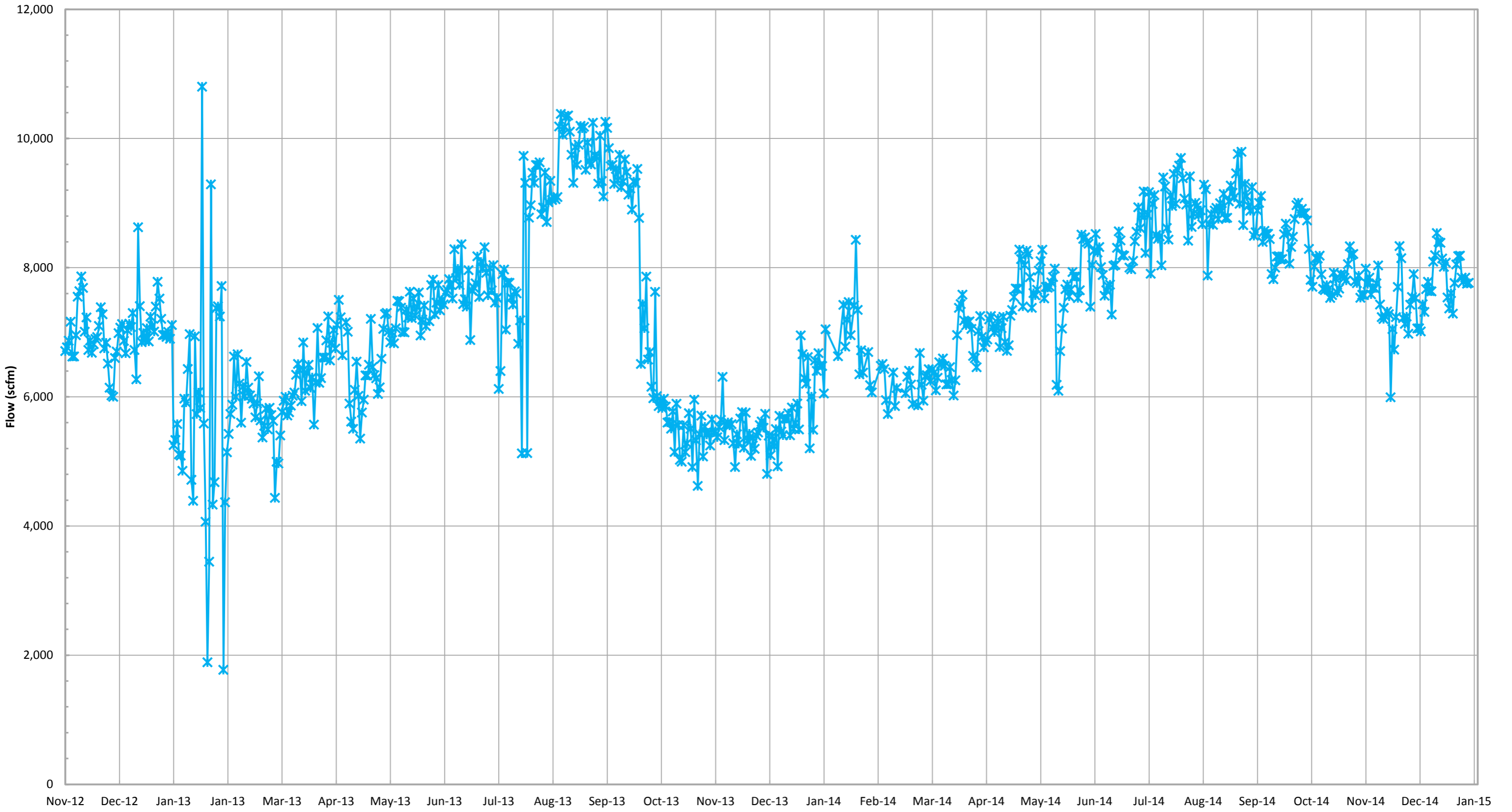
*Gas data collected from Laboratory Reports. Temperature data collected from GEM 2000 field readings.

Inlet Carbon Monoxide*



*Data collected from Laboratory Reports.

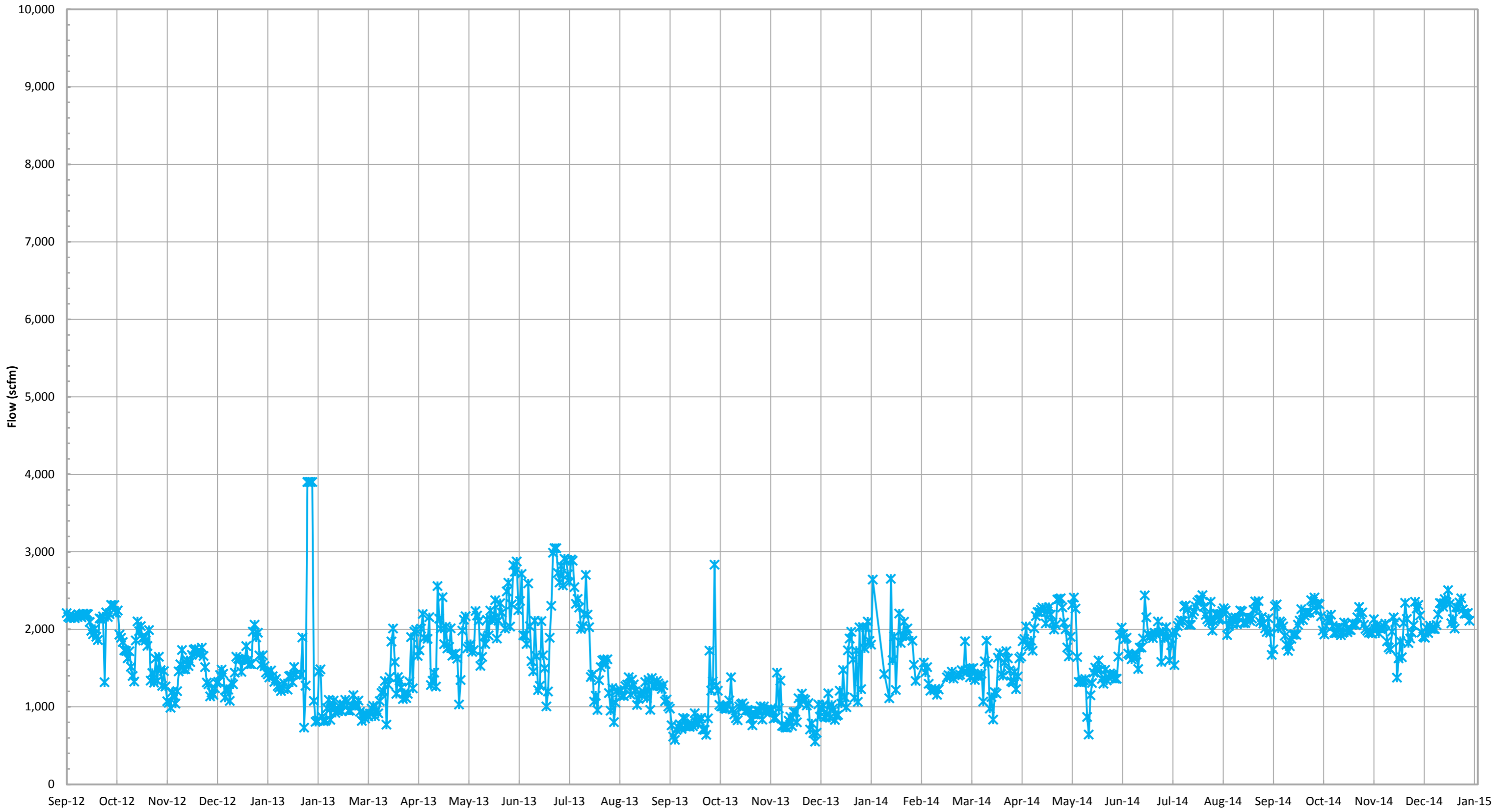
Total Combined Flow (scfm)*



—* Total Combined Flow (scfm)*

*Combined flow is based on tabulated flow data collected daily from each device.

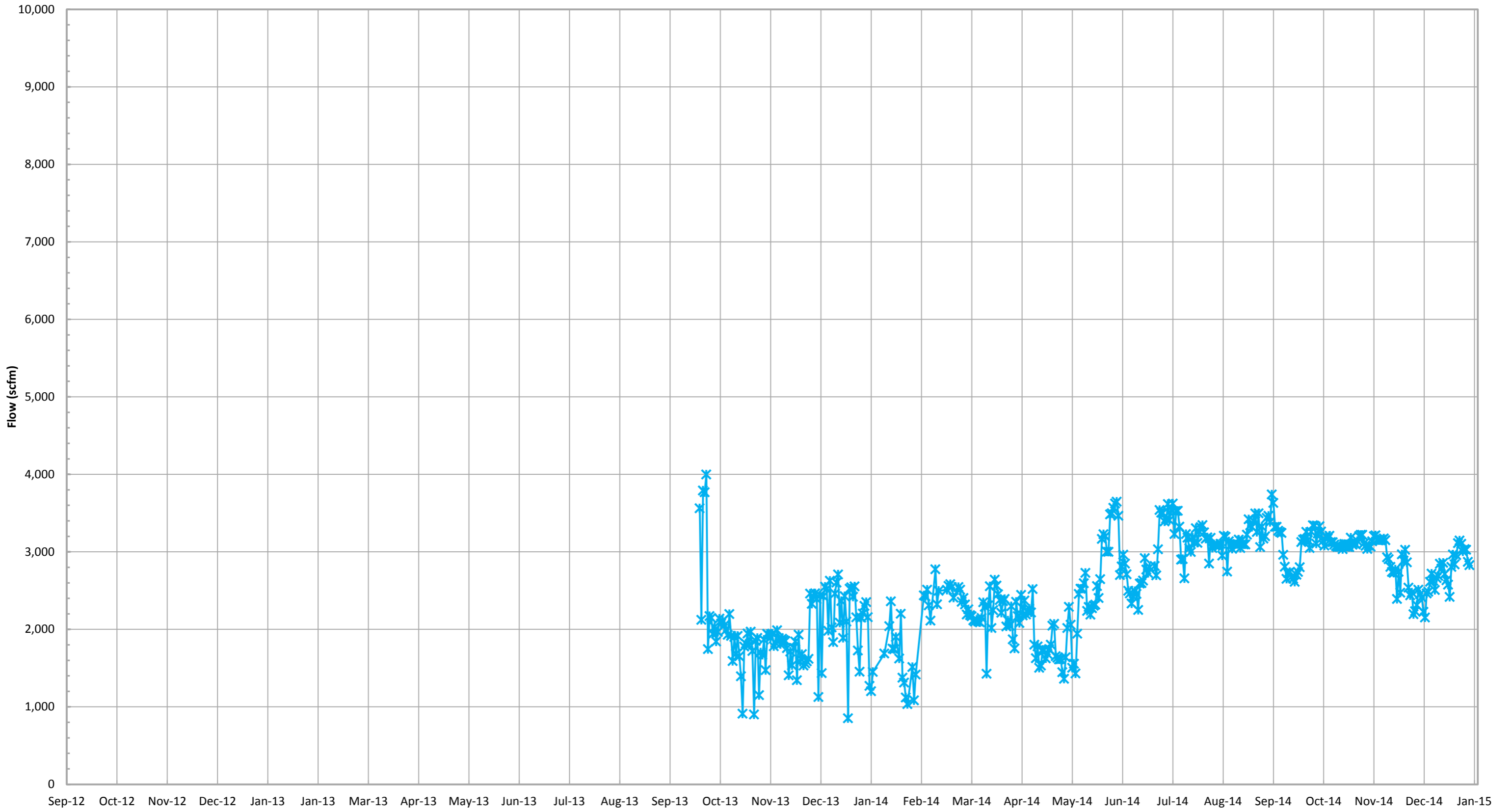
Candlestick Flare (FL-100) Flow (scfm)*



—* Candlestick Flare (FL-100) Flow (scfm)*

*Flow is based on tabulated flow data collected daily.

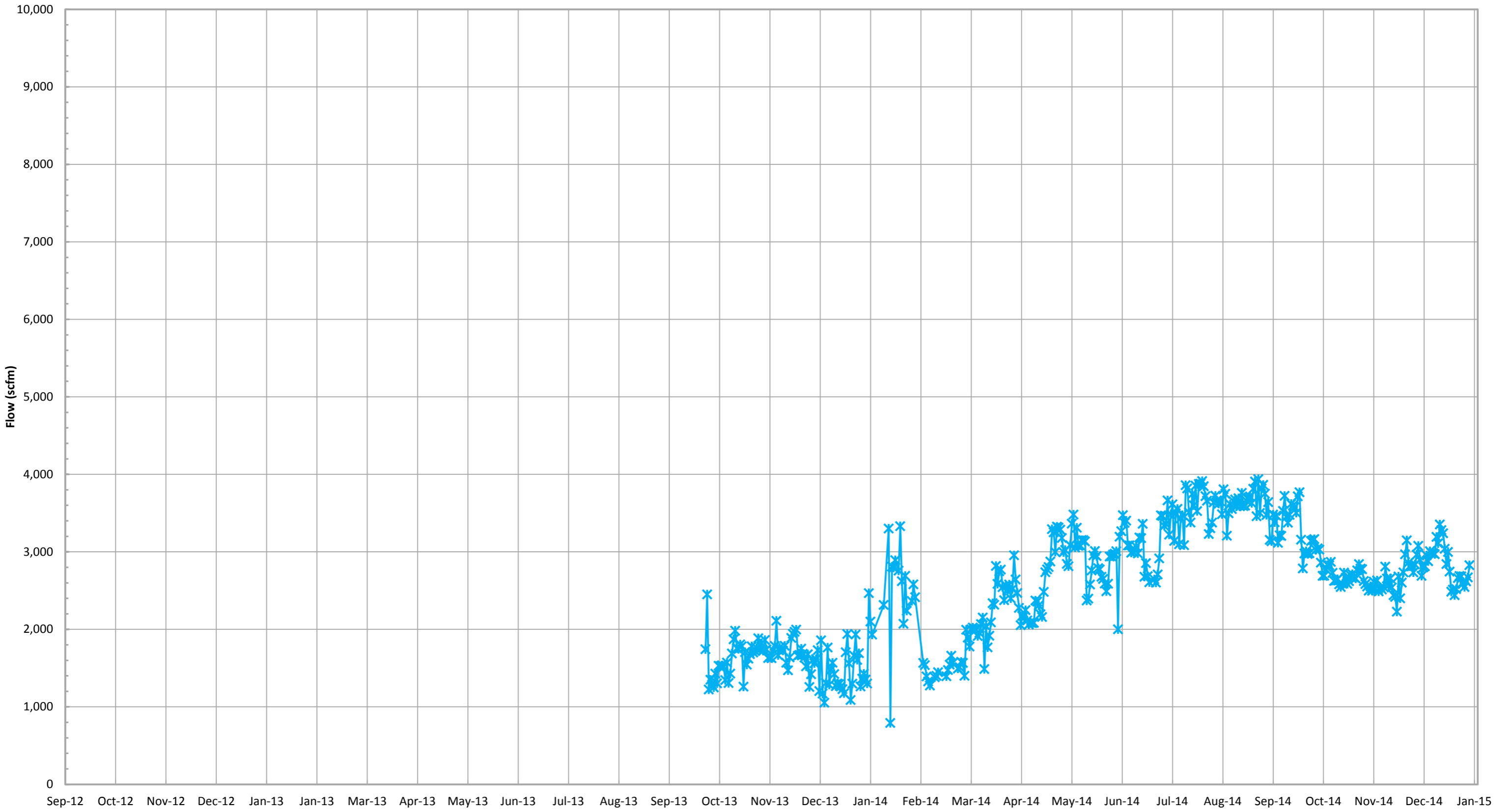
Candlestick Flare (FL-120) Flow (scfm)*



—*— Candlestick Flare (FL-120) Flow (scfm)*

*Flow is based on tabulated flow data collected daily.

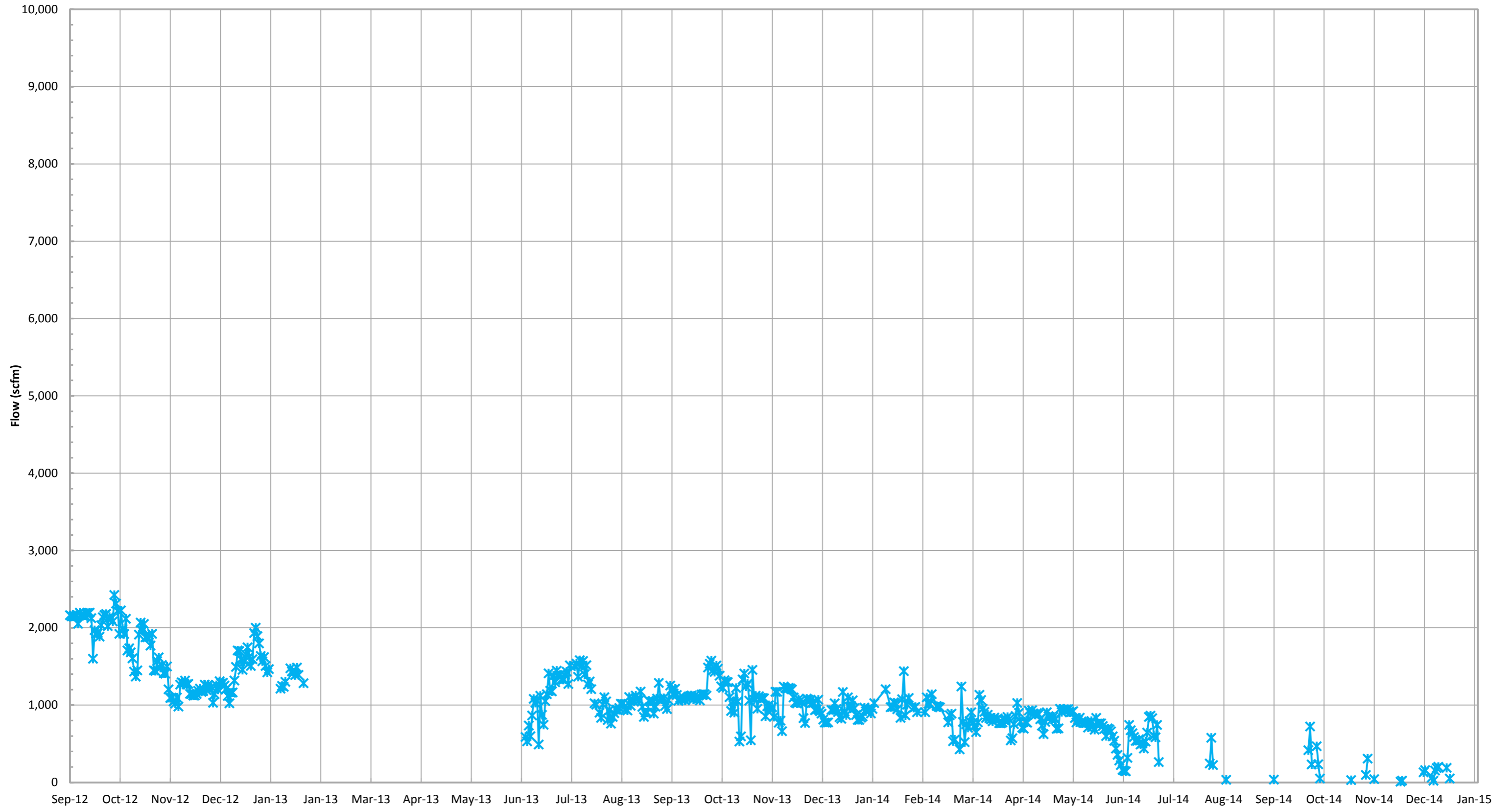
Candlestick Flare (FL-140) Flow (scfm)*



—x— Candlestick Flare (FL-140) Flow (scfm)*

*Flow is based on tabulated flow data collected daily.

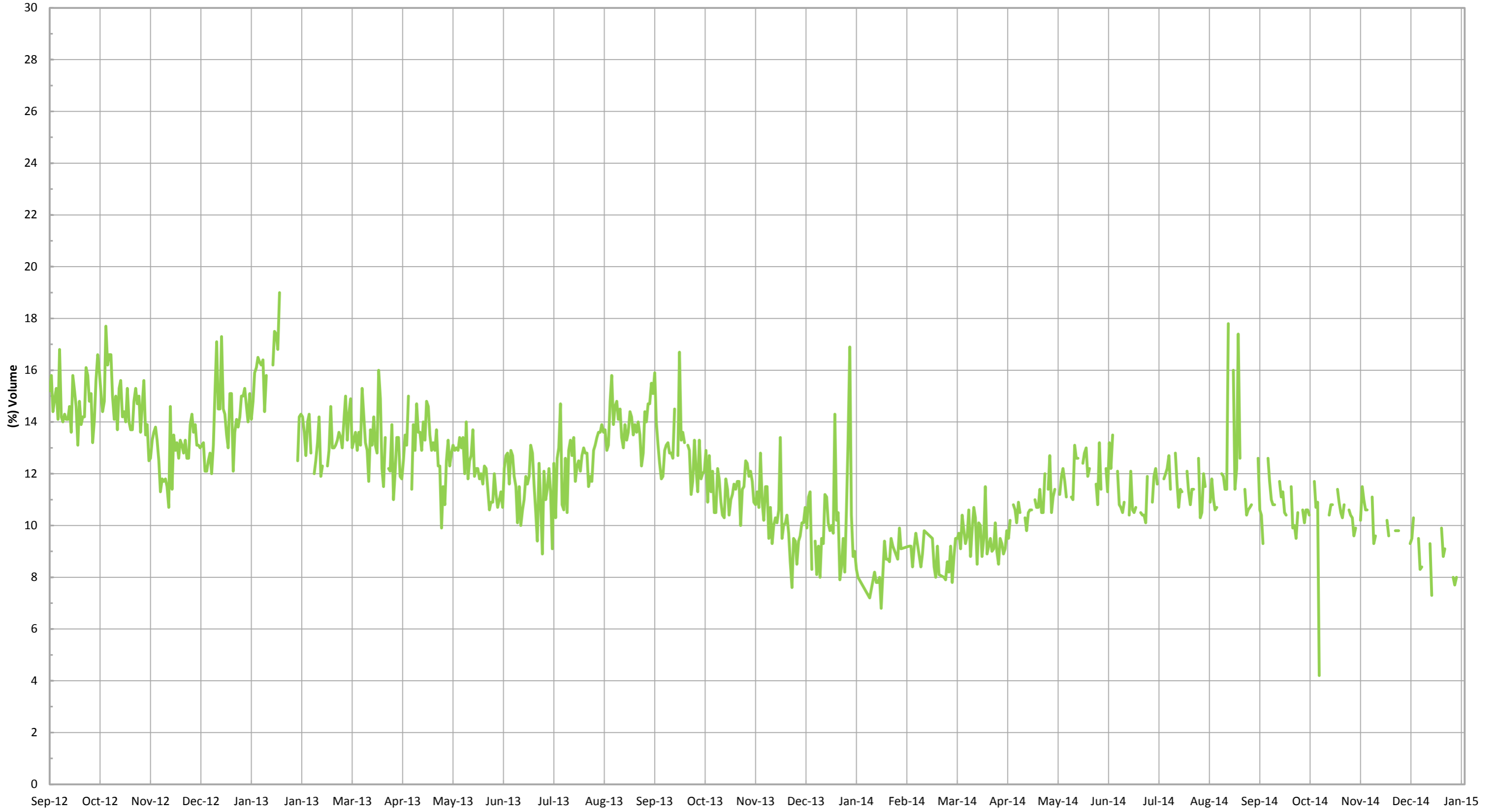
East Auxillary Candlestick Flare Flow (scfm)*



—* East Auxillary Candlestick Flare Flow (scfm)*

*Flow is based on tabulated flow data collected daily.

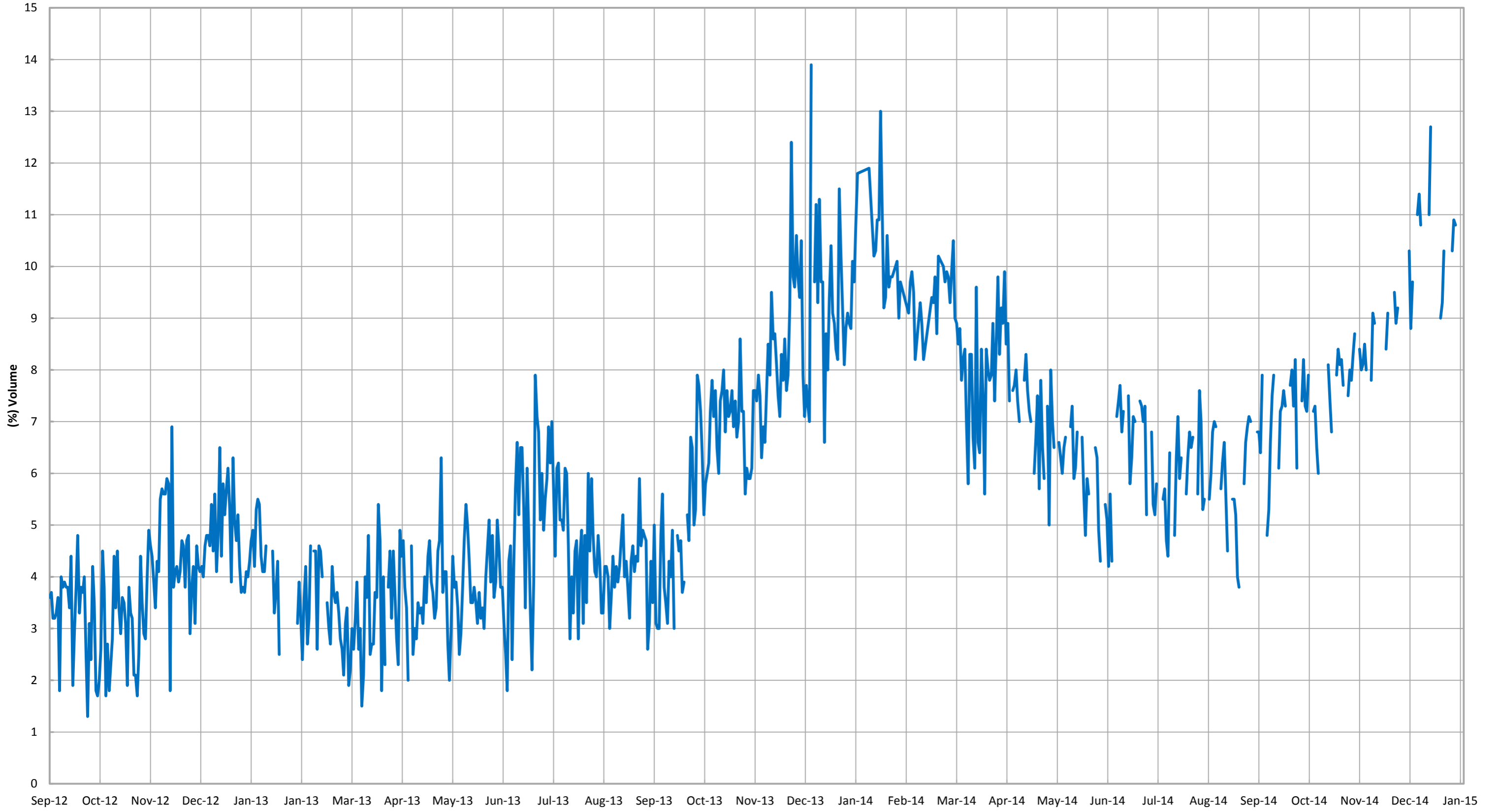
Combined Inlet Methane (GEM 2000)*



— Combined Inlet Methane (GEM 2000)*

*Gas data collected from GEM 2000 field monitoring instrument.

Combined Inlet Oxygen (GEM 2000)*



— Combined Inlet Oxygen (GEM 2000)*

*Gas data collected from GEM 2000 field monitoring instrument.