



HERST & ASSOCIATES, INC.®

Global Presence
Personal Attention

Ms. Charlene Fitch
Missouri Department of Natural Resources
Division of Environmental Quality
1730 East Elm Street
Jefferson City, Missouri 65101

POSTED
6/26/15

June 25, 2015

RECEIVED

Dear Ms. Fitch:

JUN 26 2015

**Second Quarter 2015
Assessment Monitoring Event Summary Report
Bridgeton Landfill, LLC - Bridgeton Landfill
Bridgeton, Missouri
Missouri Department of Natural Resources Permit #MO -118912**

SWMP

On behalf of Bridgeton Landfill, LLC, Herst & Associates, Inc. is submitting the *Assessment Monitoring Event Summary Report* (Summary Report) for the second quarter 2015 groundwater assessment monitoring event at the Bridgeton Landfill.

In accordance with the December 17, 2013 *Assessment Monitoring Plan – Wells 104-SS and 104-SD* (AMP) and the August 18, 2014 addendum to the AMP, a groundwater assessment monitoring event was performed at the Bridgeton Landfill during the second quarter of 2015. Sampling was performed by Herst & Associates, Inc. on May 13 - 14, 2015, concurrently with the facility's quarterly groundwater detection monitoring event. Laboratory analysis of groundwater samples was performed by Pace Analytical Services, Inc. (Pace).

As specified in Section 4.4 of the AMP, the following groundwater monitoring wells constitute the facility's assessment wells:

- PZ-104-SS
- PZ-104-SD
- PZ-104-KS
- PZ-209-SS
- PZ-209-SD
- PZ-210-SS
- PZ-210-SD
- PZ-211-SS
- PZ-211-SD

Figure 1 illustrates the locations of the facility's assessment wells.

During the first assessment event in September 2014, the assessment wells were sampled for the constituents listed in Title 10 of the Missouri Code of State Regulations (CSR) 80-3 Appendix II (hereafter, App II). The following six (6) App II constituents were detected in September 2014, but had not previously been detected in wells PZ-104-SS or PZ-104-SD between May 2012 and May 2014:

- Beryllium, Total
- Cadmium, Total
- Copper, Total
- Lead, Total
- Selenium, Total
- Zinc, Total

The following four (4) App II constituents were detected in September 2014, but had not previously been analyzed in wells PZ-104-SS or PZ-104-SD between May 2012 and May 2014:

- Sulfide
- p-Cresol
- Phenol
- Polychlorinated Biphenyl Aroclor 1221

In accordance with Section 4.6 and Table 4-1 of the AMP, the assessment wells were sampled for the following in May 2015:

- The fifteen (15) assessment constituents initially identified in the AMP:
 - Arsenic, Total
 - Barium, Total
 - Chromium, Total
 - Cobalt, Total
 - Nickel, Total
 - Vanadium, Total
 - 1,2-Dichloroethane
 - 4-Methyl-2-pentanone
 - Acetone
 - Benzene
 - Ethylbenzene
 - Methyl Ethyl Ketone
 - p-Dichlorobenzene
 - Toluene
 - Xylenes, Total
- The ten (10) new App II constituents detected during September 2014 and listed above.
- The seven (7) non-App II constituents identified by Missouri Department of Natural Resources' (MDNR) November 2012 split sampling of PZ-104-SD:
 - 1,2,4-Trimethylbenzene
 - 1,3,5-Trimethylbenzene
 - 1-Chlorobutane
 - Isopropylbenzene
 - Methyl-t-butyl Ether
 - p-Isopropyltoluene
 - Tetrahydrofuran

In addition, the following background wells were also sampled for the new App II constituents and the non-App II constituents in May 2015:

- PZ-212-SS
- PZ-212-SD

The two background wells are located 1,050 ft to the east of the facility, and are representative of upgradient groundwater quality. Results from the background wells may be used to determine background concentrations for constituents that have not previously been detected or analyzed.

The results of the May 2015 assessment event are summarized on the attached **Table 1**.

Wells PZ-104-SD, PZ-104-KS, and PZ-210-SD were the only assessment wells that exhibited detections of any of the new App II constituents and/or non-App II constituents during the May 2015 assessment event. Total copper, p-cresol, and tetrahydrofuran were detected at PZ-104-SD. Total copper was detected at PZ-104-KS. Total copper was detected at PZ-210-SD.

Background wells PZ-212-SS and PZ-212-SD exhibited detections of new App II constituents and/or non-App II constituents during the May 2015 assessment event. Total zinc was detected at PZ-212-SS. Total cadmium, total copper, total lead, and total zinc were detected at PZ-212-SD.

The May 2015 event is the fourth and final event for quarterly monitoring of new App II constituents and non-App II constituents at assessment wells. In accordance with Table 4-1 of the AMP, the

assessment wells will from this point be sampled for all assessment constituents on a semi-annual basis. The assessment wells will next be sampled for the assessment constituents during the fourth quarter (November) 2015. Quarterly monitoring of the 10 new App II constituents and 7 non-App II constituents at background wells PZ-212-SS and PZ-22-SD will continue for an additional quarter in the third quarter (August) 2015.

During the previous assessment monitoring events in September 2014, November 2014, and February 2015, the laboratory's mass spectrometer used to analyze for volatile organic compounds (VOCs) was not calibrated to report the non-App II constituent 1-chlorobutane. Pace was able to calibrate its instruments to report 1-chlorobutane beginning with the May 2015 assessment event. Quarterly sampling of the assessment and background wells for 1-chlorobutane will continue for an additional three quarters.

Table 2 summarizes the anticipated assessment sampling schedules for August 2015, November 2015, February 2016, and May 2016.

In accordance with Section 4.7 of the AMP, the results of the assessment monitoring will be discussed in more detail in the facility's first *Annual Assessment Monitoring Report*, which will be submitted to the SWMP by August 31, 2015.

Should you have any questions, please contact the undersigned at your convenience.

Sincerely,

HERST & ASSOCIATES, INC.



Ward E. Herst
Managing Partner



Andrew Wyatt
Senior Environmental Scientist

Cc: Derek Bouchard – Bridgeton Landfill, LLC
Bob Lambrechts – Lathrop & Gage
Victoria Warren – Republic Services

Attachments: Table 1 – Assessment Monitoring Results
Table 2 – Anticipated Assessment Sampling Schedule
Figure 1 – Assessment Monitoring Wells

Table 1
Assessment Monitoring Results
May 2015 Assessment Monitoring event
Bridgeton Landfill, LLC - Bridgeton Landfill - Bridgeton, Missouri

Constituent	Units	Constituent Type	PZ-104-SS	PZ-104-SD	PZ-104-KS	PZ-209-SS	PZ-209-SD	PZ-210-SS
			5/13/2015	5/13/2015	5/13/2015	5/13/2015	5/13/2015	5/13/2015
Inorganic Constituents								
Arsenic, Total	ug/L	Initially Identified Assessment	<5.0	6.0 / 7.2	<5.0	<5.0	<5.0	5.6
Barium, Total	ug/L	Initially Identified Assessment	103	470 / 469	97.1	89.2	40.0	67.8
Beryllium, Total	ug/L	New App II, Not Prev. Detected	<2.0	<2.0 / <2.0	<2.0	<2.0	<2.0	<2.0
Cadmium, Total	ug/L	New App II, Not Prev. Detected	<0.20	<0.20 / <0.20	<0.20	<0.20	<0.20	<0.20
Chromium, Total	ug/L	Initially Identified Assessment	<5.0	6.4 / 6.3	<5.0	<5.0	<5.0	<5.0
Cobalt, Total	ug/L	Initially Identified Assessment	<5.0	<5.0 / <5.0	<5.0	<5.0	<5.0	<5.0
Copper, Total	ug/L	New App II, Not Prev. Detected	<5.0	13.0 / 9.1	6.1	<5.0	<5.0	<5.0
Lead, Total	ug/L	New App II, Not Prev. Detected	<5.0	<5.0 / <5.0	<5.0	<5.0	<5.0	<5.0
Nickel, Total	ug/L	Initially Identified Assessment	<10.0	22.1 / 22.1	<10.0	<10.0	<10.0	<10.0
Selenium, Total	ug/L	New App II, Not Prev. Detected	<5.0	<5.0 / <5.0	<5.0	<5.0	<5.0	<5.0
Sulfide	mg/L	New App II, Not Prev. Analyzed	<10.0	<1.0 / <1.0	<1.0	<2.0	<2.0	<1.0
Vanadium, Total	ug/L	Initially Identified Assessment	<10.0	<10.0 / <10.0	<10.0	<10.0	<10.0	<10.0
Zinc, Total	ug/L	New App II, Not Prev. Detected	<20.0	<20.0 / <20.0	<20.0	<20.0	<20.0	<20.0
Organic Constituents								
1,2,4-Trimethylbenzene	ug/L	Non-App II from MDNR Split	<5.0	<5.0 / <5.0	<5.0	<5.0	<5.0	<5.0
1,2-Dichloroethane	ug/L	Initially Identified Assessment	<5.0	<5.0 / <5.0	<5.0	<5.0	<5.0	<5.0
1,3,5-Trimethylbenzene	ug/L	Non-App II from MDNR Split	<5.0	<5.0 / <5.0	<5.0	<5.0	<5.0	<5.0
1-Chlorobutane (n-Butyl Chloride)	ug/L	Non-App II from MDNR Split	<5.0	<5.0 / <5.0	<5.0	<5.0	<5.0	<5.0
4-Methyl-2-pentanone	ug/L	Initially Identified Assessment	<10.0	<10.0 / <10.0	<10.0	<10.0	<10.0	<10.0
Acetone	ug/L	Initially Identified Assessment	<10.0	<10.0 / <10.0	<10.0	<10.0	<10.0	<10.0
Benzene	ug/L	Initially Identified Assessment	935	672 / 673	<5.0	<5.0	<5.0	<5.0
Ethylbenzene	ug/L	Initially Identified Assessment	20.3	9.4 / 10.4	<5.0	<5.0	<5.0	<5.0
Isopropylbenzene	ug/L	Non-App II from MDNR Split	<5.0	<5.0 / <5.0	<5.0	<5.0	<5.0	<5.0
Methyl Ethyl Ketone (2-Butanone)	ug/L	Initially Identified Assessment	<10.0	<10.0 / <10.0	<10.0	<10.0	<10.0	<10.0

Table 1
Assessment Monitoring Results
May 2015 Assessment Monitoring event
Bridgeton Landfill, LLC - Bridgeton Landfill - Bridgeton, Missouri

Constituent	Units	Constituent Type	PZ-104-SS	PZ-104-SD	PZ-104-KS	PZ-209-SS	PZ-209-SD	PZ-210-SS
			5/13/2015	5/13/2015	5/13/2015	5/13/2015	5/13/2015	5/13/2015
Methyl-t-butyl Ether (Methyl-tert-butyl Ether)	ug/L	Non-App II from MDNR Split	<5.0	<5.0 / <5.0	<5.0	<5.0	<5.0	<5.0
p-Cresol* (4-Methylphenol)	ug/L	New App II, Not Prev. Analyzed	<10.1	20.4 / 38.6	<10.1	<10.2	<10.2	<10.0
p-Dichlorobenzene (1,4-Dichlorobenzene)	ug/L	Initially Identified Assessment	<5.0	<5.0 / <5.0	<5.0	<5.0	<5.0	<5.0
p-Isopropyltoluene	ug/L	Non-App II from MDNR Split	<5.0	<5.0 / <5.0	<5.0	<5.0	<5.0	<5.0
Polychlorinated Biphenyl Aroclor 1221 (PCB-1221)	ug/L	New App II, Not Prev. Analyzed	<0.20	<0.20 / <0.20	<0.20	<0.20	<0.20	<0.20
Phenol	ug/L	New App II, Not Prev. Analyzed	<10.1	<10.1 / <10.1	<10.1	<10.2	<10.2	<10.0
Tetrahydrofuran	ug/L	Non-App II from MDNR Split	<100	301 / 304	<100	<100	<100	<100
Toluene	ug/L	Initially Identified Assessment	71.3	25.1 / 27.6	<5.0	<5.0	<5.0	<5.0
Xylenes, Total	ug/L	Initially Identified Assessment	32.8	22.7 / 24.6	<5.0	<5.0	<5.0	<5.0

Table 1
Assessment Monitoring Results
May 2015 Assessment Monitoring event
Bridgeton Landfill, LLC - Bridgeton Landfill - Bridgeton, Missouri

Constituent	Units	Constituent Type	PZ-210-SD	PZ-211-SS	PZ-211-SD	PZ-212-SS	PZ-212-SD
			5/13/2015	5/13/2015	5/13/2015	5/13/2015	5/13/2015
Inorganic Constituents							
Arsenic, Total	ug/L	Initially Identified Assessment	5.3	<5.0	<5.0	NA	NA
Barium, Total	ug/L	Initially Identified Assessment	78.6	76.6	40.8	NA	NA
Beryllium, Total	ug/L	New App II, Not Prev. Detected	<2.0	<2.0	<2.0	<2.0	<2.0
Cadmium, Total	ug/L	New App II, Not Prev. Detected	<0.20	<0.20	<0.20	<0.20	2.3
Chromium, Total	ug/L	Initially Identified Assessment	<5.0	<5.0	<5.0	NA	NA
Cobalt, Total	ug/L	Initially Identified Assessment	<5.0	<5.0	<5.0	NA	NA
Copper, Total	ug/L	New App II, Not Prev. Detected	6.8	<5.0	<5.0	<5.0	18.7
Lead, Total	ug/L	New App II, Not Prev. Detected	<5.0	<5.0	<5.0	<5.0	7.0
Nickel, Total	ug/L	Initially Identified Assessment	<10.0	<10.0	<10.0	NA	NA
Selenium, Total	ug/L	New App II, Not Prev. Detected	<5.0	<5.0	<5.0	<5.0	<5.0
Sulfide	mg/L	New App II, Not Prev. Analyzed	<1.0	<1.0	<5.0	<1.0	<1.0
Vanadium, Total	ug/L	Initially Identified Assessment	<10.0	<10.0	<10.0	NA	NA
Zinc, Total	ug/L	New App II, Not Prev. Detected	<20.0	<20.0	<20.0	25.4	157
Organic Constituents							
1,2,4-Trimethylbenzene	ug/L	Non-App II from MDNR Split	<5.0	<5.0	<5.0	<5.0	<5.0
1,2-Dichloroethane	ug/L	Initially Identified Assessment	<5.0	<5.0	<5.0	NA	NA
1,3,5-Trimethylbenzene	ug/L	Non-App II from MDNR Split	<5.0	<5.0	<5.0	<5.0	<5.0
1-Chlorobutane (n-Butyl Chloride)	ug/L	Non-App II from MDNR Split	<5.0	<5.0	<5.0	<5.0	<5.0
4-Methyl-2-pentanone	ug/L	Initially Identified Assessment	<10.0	<10.0	<10.0	NA	NA
Acetone	ug/L	Initially Identified Assessment	<10.0	<10.0	<10.0	NA	NA
Benzene	ug/L	Initially Identified Assessment	<5.0	<5.0	<5.0	NA	NA
Ethylbenzene	ug/L	Initially Identified Assessment	<5.0	<5.0	<5.0	NA	NA
Isopropylbenzene	ug/L	Non-App II from MDNR Split	<5.0	<5.0	<5.0	<5.0	<5.0
Methyl Ethyl Ketone (2-Butanone)	ug/L	Initially Identified Assessment	<10.0	<10.0	<10.0	NA	NA

Table 1
Assessment Monitoring Results
May 2015 Assessment Monitoring event
Bridgeton Landfill, LLC - Bridgeton Landfill - Bridgeton, Missouri

Constituent	Units	Constituent Type	PZ-210-SD	PZ-211-SS	PZ-211-SD	PZ-212-SS	PZ-212-SD
			5/13/2015	5/13/2015	5/13/2015	5/13/2015	5/13/2015
Methyl-t-butyl Ether (Methyl-tert-butyl Ether)	ug/L	Non-App II from MDNR Split	<5.0	<5.0	<5.0	<5.0	<5.0
p-Cresol* (4-Methylphenol)	ug/L	New App II, Not Prev. Analyzed	<10.0	<10.0	<10.0	<10.0	<10.1
p-Dichlorobenzene (1,4-Dichlorobenzene)	ug/L	Initially Identified Assessment	<5.0	<5.0	<5.0	NA	NA
p-Isopropyltoluene	ug/L	Non-App II from MDNR Split	<5.0	<5.0	<5.0	<5.0	<5.0
Polychlorinated Biphenyl Aroclor 1221 (PCB-1221)	ug/L	New App II, Not Prev. Analyzed	<0.20	<0.20	<0.20	<0.20	<0.20
Phenol	ug/L	New App II, Not Prev. Analyzed	<10.0	<10.0	<10.0	<10.0	<10.1
Tetrahydrofuran	ug/L	Non-App II from MDNR Split	<100	<100	<100	<100	<100
Toluene	ug/L	Initially Identified Assessment	<5.0	<5.0	<5.0	NA	NA
Xylenes, Total	ug/L	Initially Identified Assessment	<5.0	<5.0	<5.0	NA	NA

Field duplicate sample results are presented alongside original sample (e.g., 13.2 / 13.6).

Constituent detected above laboratory reporting limit.

NA: Constituent not analyzed at this well, in accordance with the AMP and First Quarter 2015 Assessment Monitoring Event Summary Report.

* p-Cresol reported by laboratory as m+p-Cresols.

Table 2
Anticipated Assessment Sampling Schedule
Bridgeton Landfill, LLC - Bridgeton Landfill – Bridgeton, Missouri

<i>Third Quarter (August) 2015 Assessment Monitoring Event</i>												
Constituent	Constituent Type	PZ-104-SS	PZ-104-SD	PZ-104-KS	PZ-209-SS	PZ-209-SD	PZ-210-SS	PZ-210-SD	PZ-211-SS	PZ-211-SD	PZ-212-SS	PZ-212-SD
<i>Inorganic Constituents</i>												
Beryllium, Total	New App II, Not Prev. Detected										•	•
Cadmium, Total	New App II, Not Prev. Detected										•	•
Copper, Total	New App II, Not Prev. Detected										•	•
Lead, Total	New App II, Not Prev. Detected										•	•
Selenium, Total	New App II, Not Prev. Detected										•	•
Sulfide	New App II, Not Prev. Analyzed										•	•
Zinc, Total	New App II, Not Prev. Detected										•	•
<i>Organic Constituents</i>												
1,2,4-Trimethylbenzene	Non-App II from MDNR Split										•	•
1,3,5-Trimethylbenzene	Non-App II from MDNR Split										•	•
1-Chlorobutane (n-Butyl Chloride)	Non-App II from MDNR Split	•	•	•	•	•	•	•	•	•	•	•
Isopropylbenzene	Non-App II from MDNR Split										•	•
Methyl-t-butyl Ether (Methyl-tert-butyl Ether)	Non-App II from MDNR Split										•	•
p-Cresol (4-Methylphenol)	New App II, Not Prev. Analyzed										•	•
p-Isopropyltoluene	Non-App II from MDNR Split										•	•
Polychlorinated Biphenyl Aroclor 1221 (PCB-1221)	New App II, Not Prev. Analyzed										•	•
Phenol	New App II, Not Prev. Analyzed										•	•
Tetrahydrofuran	Non-App II from MDNR Split										•	•

Table 2
Anticipated Assessment Sampling Schedule
Bridgeton Landfill, LLC - Bridgeton Landfill – Bridgeton, Missouri

<i>Fourth Quarter (November) 2015 Assessment Monitoring Event</i>												
Constituent	Constituent Type	PZ-104-SS	PZ-104-SD	PZ-104-KS	PZ-209-SS	PZ-209-SD	PZ-210-SS	PZ-210-SD	PZ-211-SS	PZ-211-SD	PZ-212-SS	PZ-212-SD
<i>Inorganic Constituents</i>												
Arsenic, Total	Initially Identified Assessment	•	•	•	•	•	•	•	•	•		
Barium, Total	Initially Identified Assessment	•	•	•	•	•	•	•	•	•		
Beryllium, Total	New App II, Not Prev. Detected	•	•	•	•	•	•	•	•	•		
Cadmium, Total	New App II, Not Prev. Detected	•	•	•	•	•	•	•	•	•		
Chromium, Total	Initially Identified Assessment	•	•	•	•	•	•	•	•	•		
Cobalt, Total	Initially Identified Assessment	•	•	•	•	•	•	•	•	•		
Copper, Total	New App II, Not Prev. Detected	•	•	•	•	•	•	•	•	•		
Lead, Total	New App II, Not Prev. Detected	•	•	•	•	•	•	•	•	•		
Nickel, Total	Initially Identified Assessment	•	•	•	•	•	•	•	•	•		
Selenium, Total	New App II, Not Prev. Detected	•	•	•	•	•	•	•	•	•		
Sulfide	New App II, Not Prev. Analyzed	•	•	•	•	•	•	•	•	•		
Vanadium, Total	Initially Identified Assessment	•	•	•	•	•	•	•	•	•		
Zinc, Total	New App II, Not Prev. Detected	•	•	•	•	•	•	•	•	•		
<i>Organic Constituents</i>												
1,2,4-Trimethylbenzene	Non-App II from MDNR Split	•	•	•	•	•	•	•	•	•		
1,2-Dichloroethane	Initially Identified Assessment	•	•	•	•	•	•	•	•	•		
1,3,5-Trimethylbenzene	Non-App II from MDNR Split	•	•	•	•	•	•	•	•	•		
1-Chlorobutane (n-Butyl Chloride)	Non-App II from MDNR Split	•	•	•	•	•	•	•	•	•	•	•
4-Methyl-2-pentanone	Initially Identified Assessment	•	•	•	•	•	•	•	•	•		
Acetone	Initially Identified Assessment	•	•	•	•	•	•	•	•	•		
Benzene	Initially Identified Assessment	•	•	•	•	•	•	•	•	•		
Ethylbenzene	Initially Identified Assessment	•	•	•	•	•	•	•	•	•		
Isopropylbenzene	Non-App II from MDNR Split	•	•	•	•	•	•	•	•	•		
Methyl Ethyl Ketone (2-Butanone)	Initially Identified Assessment	•	•	•	•	•	•	•	•	•		
Methyl-t-butyl Ether (Methyl-tert-butyl Ether)	Non-App II from MDNR Split	•	•	•	•	•	•	•	•	•		
p-Cresol (4-Methylphenol)	New App II, Not Prev. Analyzed	•	•	•	•	•	•	•	•	•		
p-Dichlorobenzene (1,4-Dichlorobenzene)	Initially Identified Assessment	•	•	•	•	•	•	•	•	•		
p-Isopropyltoluene	Non-App II from MDNR Split	•	•	•	•	•	•	•	•	•		

Table 2
Anticipated Assessment Sampling Schedule
Bridgeton Landfill, LLC - Bridgeton Landfill – Bridgeton, Missouri

<i>Fourth Quarter (November) 2015 Assessment Monitoring Event (Continued)</i>												
Constituent	Constituent Type	PZ-104-SS	PZ-104-SD	PZ-104-KS	PZ-209-SS	PZ-209-SD	PZ-210-SS	PZ-210-SD	PZ-211-SS	PZ-211-SD	PZ-212-SS	PZ-212-SD
Polychlorinated Biphenyl Aroclor 1221 (PCB-1221)	New App II, Not Prev. Analyzed	•	•	•	•	•	•	•	•	•		
Phenol	New App II, Not Prev. Analyzed	•	•	•	•	•	•	•	•	•		
Tetrahydrofuran	Non-App II from MDNR Split	•	•	•	•	•	•	•	•	•		
Toluene	Initially Identified Assessment	•	•	•	•	•	•	•	•	•		
Xylenes, Total	Initially Identified Assessment	•	•	•	•	•	•	•	•	•		

Table 2
Anticipated Assessment Sampling Schedule
Bridgeton Landfill, LLC - Bridgeton Landfill – Bridgeton, Missouri

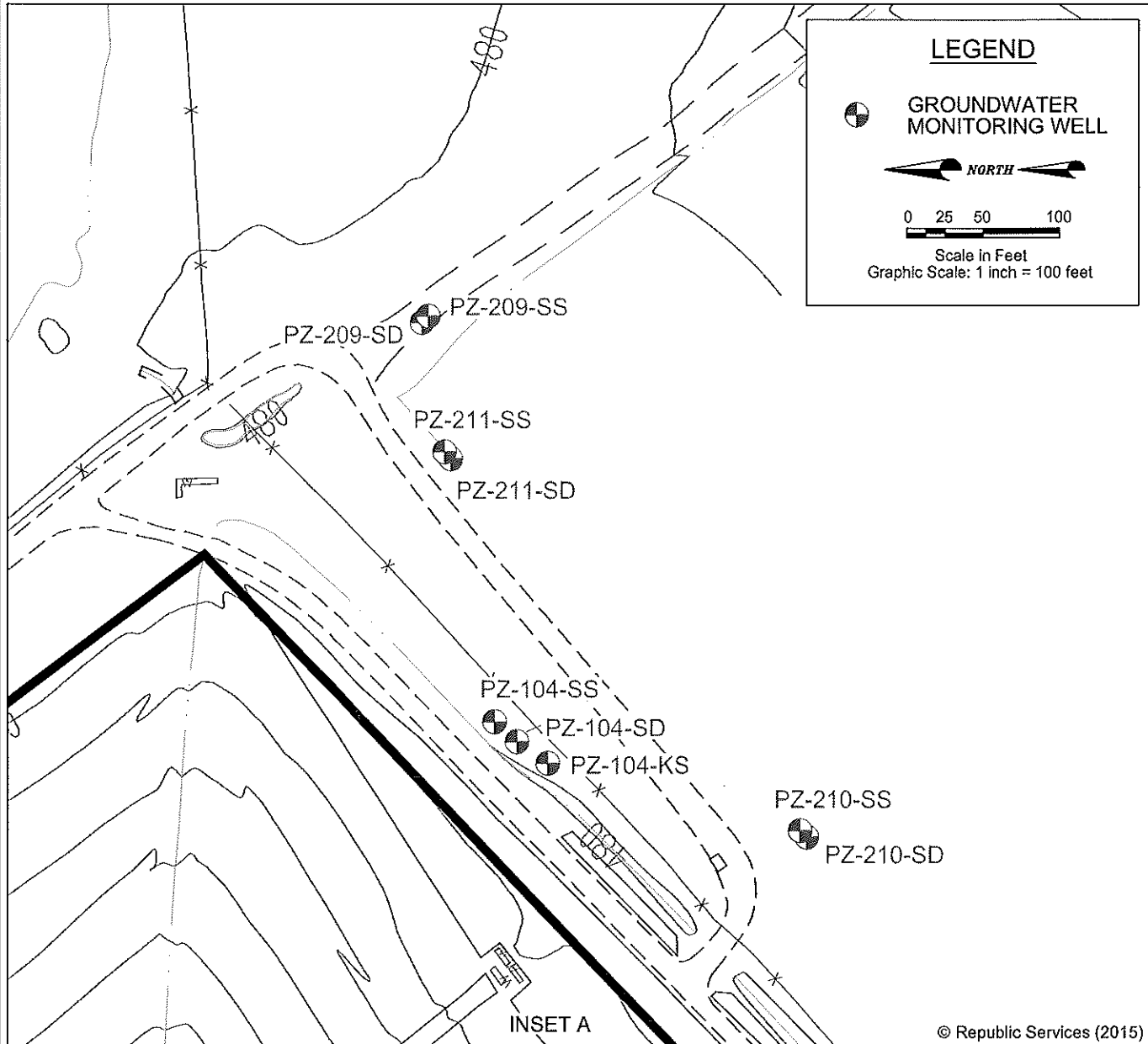
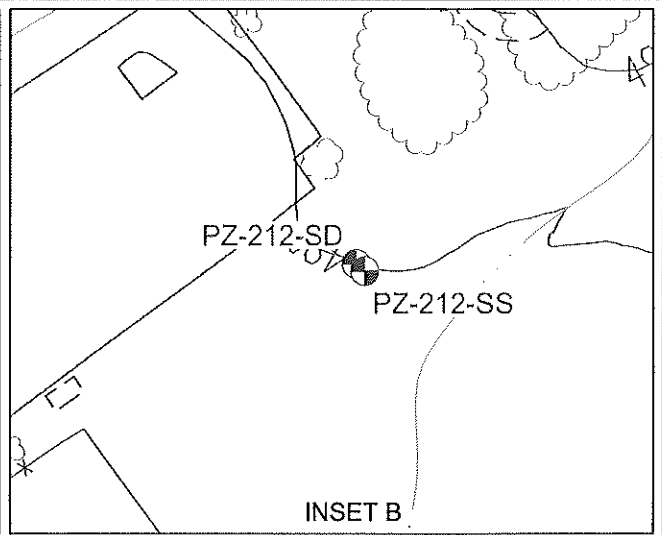
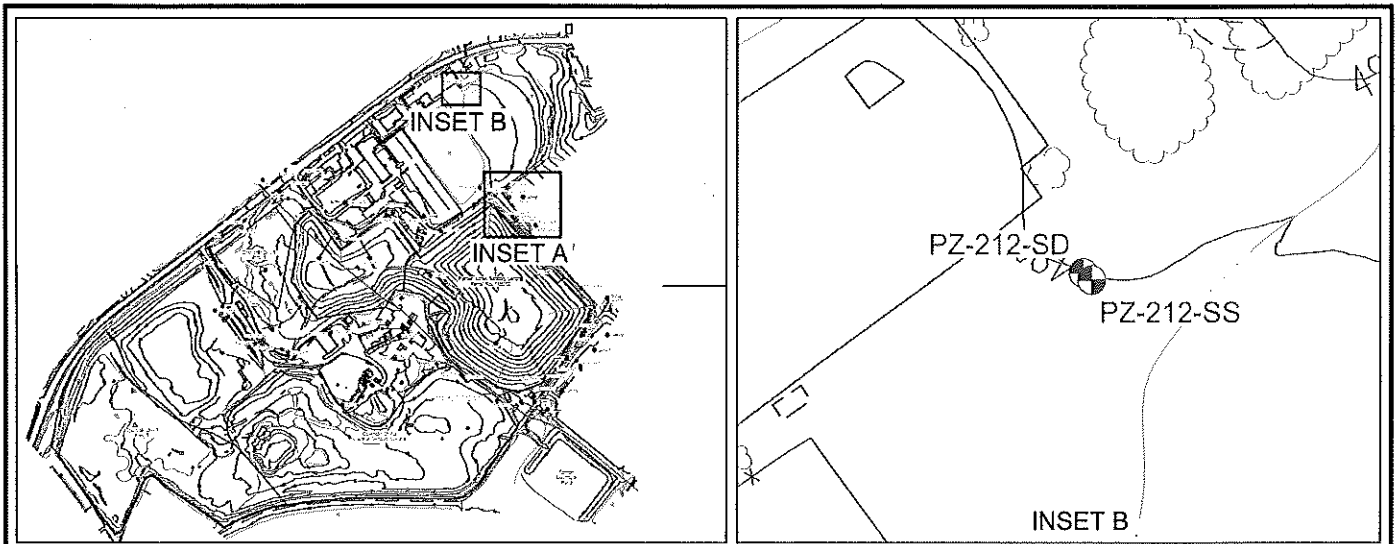
<i>First Quarter (February) 2016 Assessment Monitoring Event</i>												
Constituent	Constituent Type	PZ-104-SS	PZ-104-SD	PZ-104-KS	PZ-209-SS	PZ-209-SD	PZ-210-SS	PZ-210-SD	PZ-211-SS	PZ-211-SD	PZ-212-SS	PZ-212-SD
<i>Inorganic Constituents</i>												
1-Chlorobutane (n-Butyl Chloride)	Non-App II from MDNR Split	•	•	•	•	•	•	•	•	•	•	•

Table 2
Anticipated Assessment Sampling Schedule
Bridgeton Landfill, LLC - Bridgeton Landfill – Bridgeton, Missouri


<i>Second Quarter (May) 2016 Assessment Monitoring Event</i>												
Constituent	Constituent Type	PZ-104-SS	PZ-104-SD	PZ-104-KS	PZ-209-SS	PZ-209-SD	PZ-210-SS	PZ-210-SD	PZ-211-SS	PZ-211-SD	PZ-212-SS	PZ-212-SD
<i>Inorganic Constituents</i>												
Arsenic, Total	Initially Identified Assessment	•	•	•	•	•	•	•	•	•		
Barium, Total	Initially Identified Assessment	•	•	•	•	•	•	•	•	•		
Beryllium, Total	New App II, Not Prev. Detected	•	•	•	•	•	•	•	•	•		
Cadmium, Total	New App II, Not Prev. Detected	•	•	•	•	•	•	•	•	•		
Chromium, Total	Initially Identified Assessment	•	•	•	•	•	•	•	•	•		
Cobalt, Total	Initially Identified Assessment	•	•	•	•	•	•	•	•	•		
Copper, Total	New App II, Not Prev. Detected	•	•	•	•	•	•	•	•	•		
Lead, Total	New App II, Not Prev. Detected	•	•	•	•	•	•	•	•	•		
Nickel, Total	Initially Identified Assessment	•	•	•	•	•	•	•	•	•		
Selenium, Total	New App II, Not Prev. Detected	•	•	•	•	•	•	•	•	•		
Sulfide	New App II, Not Prev. Analyzed	•	•	•	•	•	•	•	•	•		
Vanadium, Total	Initially Identified Assessment	•	•	•	•	•	•	•	•	•		
Zinc, Total	New App II, Not Prev. Detected	•	•	•	•	•	•	•	•	•		
<i>Organic Constituents</i>												
1,2,4-Trimethylbenzene	Non-App II from MDNR Split	•	•	•	•	•	•	•	•	•		
1,2-Dichloroethane	Initially Identified Assessment	•	•	•	•	•	•	•	•	•		
1,3,5-Trimethylbenzene	Non-App II from MDNR Split	•	•	•	•	•	•	•	•	•		
1-Chlorobutane (n-Butyl Chloride)	Non-App II from MDNR Split	•	•	•	•	•	•	•	•	•		
4-Methyl-2-pentanone	Initially Identified Assessment	•	•	•	•	•	•	•	•	•		
Acetone	Initially Identified Assessment	•	•	•	•	•	•	•	•	•		
Benzene	Initially Identified Assessment	•	•	•	•	•	•	•	•	•		
Ethylbenzene	Initially Identified Assessment	•	•	•	•	•	•	•	•	•		
Isopropylbenzene	Non-App II from MDNR Split	•	•	•	•	•	•	•	•	•		
Methyl Ethyl Ketone (2-Butanone)	Initially Identified Assessment	•	•	•	•	•	•	•	•	•		
Methyl-t-butyl Ether (Methyl-tert-butyl Ether)	Non-App II from MDNR Split	•	•	•	•	•	•	•	•	•		
p-Cresol (4-Methylphenol)	New App II, Not Prev. Analyzed	•	•	•	•	•	•	•	•	•		
p-Dichlorobenzene (1,4-Dichlorobenzene)	Initially Identified Assessment	•	•	•	•	•	•	•	•	•		
p-Isopropyltoluene	Non-App II from MDNR Split	•	•	•	•	•	•	•	•	•		

Table 2
Anticipated Assessment Sampling Schedule
Bridgeton Landfill, LLC - Bridgeton Landfill – Bridgeton, Missouri

<i>Second Quarter (May) 2016 Assessment Monitoring Event (Continued)</i>												
Constituent	Constituent Type	PZ-104-SS	PZ-104-SD	PZ-104-KS	PZ-209-SS	PZ-209-SD	PZ-210-SS	PZ-210-SD	PZ-211-SS	PZ-211-SD	PZ-212-SS	PZ-212-SD
Polychlorinated Biphenyl Aroclor 1221 (PCB-1221)	New App II, Not Prev. Analyzed	•	•	•	•	•	•	•	•	•		
Phenol	New App II, Not Prev. Analyzed	•	•	•	•	•	•	•	•	•		
Tetrahydrofuran	Non-App II from MDNR Split	•	•	•	•	•	•	•	•	•		
Toluene	Initially Identified Assessment	•	•	•	•	•	•	•	•	•		
Xylenes, Total	Initially Identified Assessment	•	•	•	•	•	•	•	•	•		



© Republic Services (2015)



 4631 North St. Peters Parkway
 St. Charles, Missouri 63304
 Phone (636) 939-9111
 Fax (636) 939-9757
HERST & ASSOCIATES, INC.®

Bridgeton Landfill
Bridgeton, Missouri

Figure 1
Assessment Monitoring
Wells