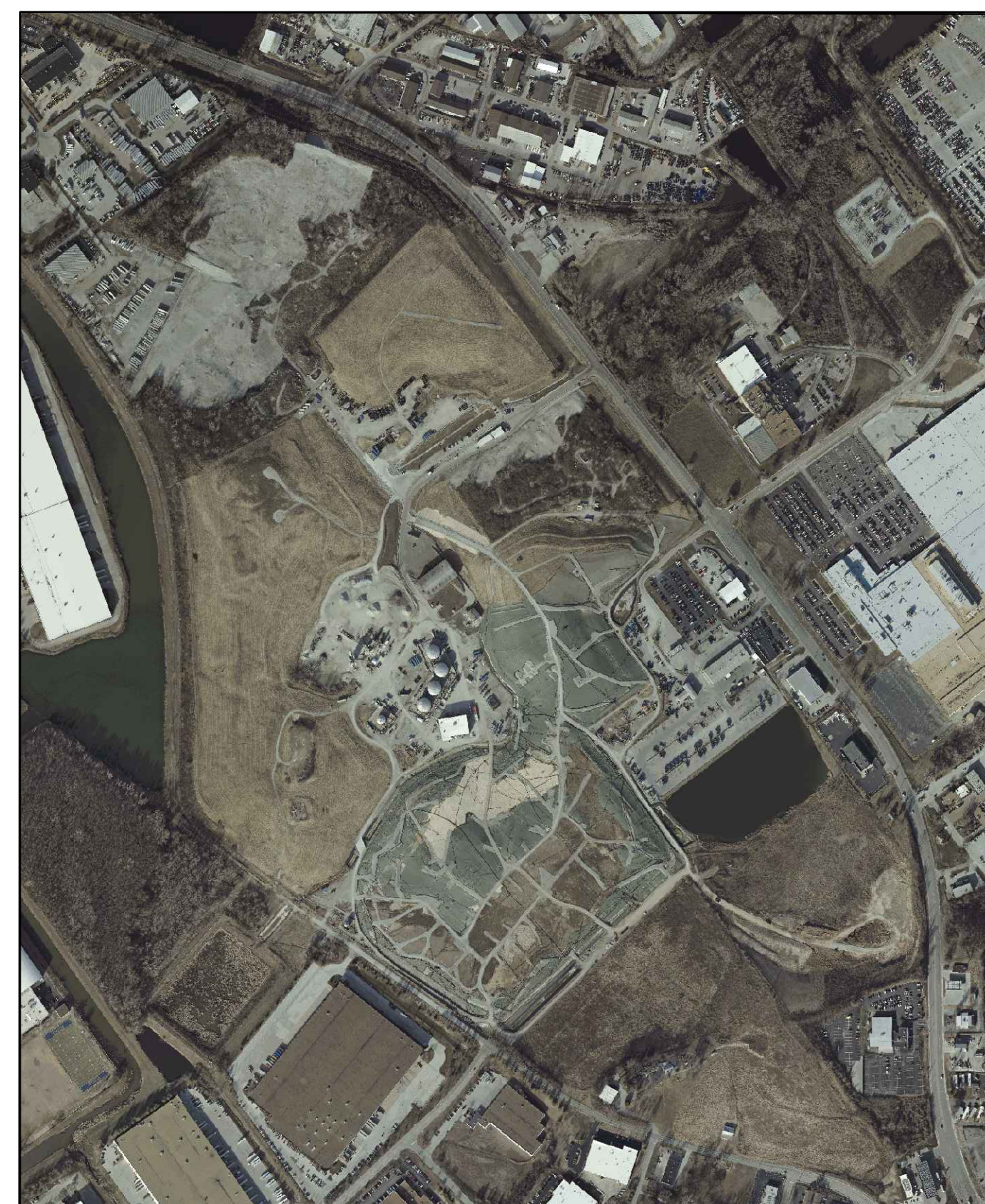

BRIDGETON LANDFILL

2020 Q1 INFRASTRUCTURE UPDATE

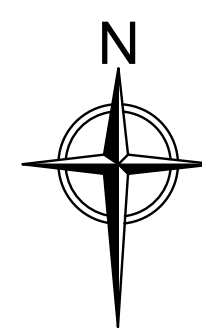
APRIL 2020
PREPARED FOR:

BRIDGETON LANDFILL, LLC

13570 ST. CHARLES ROCK ROAD
BRIDGETON, MISSOURI 63044



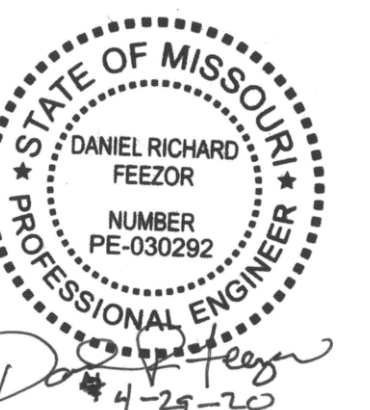
LOCATION MAP



3377 HOLLENBERG DRIVE
BRIDGETON, MO 63044
TEL. (217) 483-3118

INDEX OF DRAWINGS

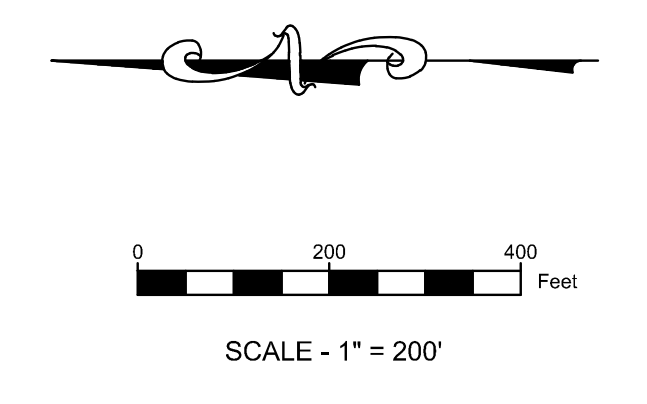
	TITLE PAGE
001	FULL SITE PLAN VIEW W/ AERIAL
002	FULL SITE PLAN VIEW
003	2020 Q1 SITE INFRASTRUCTURE PLAN
004	2020 Q1 SITE INFRASTRUCTURE - UPDATES IN Q1 SHOWN IN COLOR
005	2020 Q1 SITE INFRASTRUCTURE - REMOVED IN Q1 SHOWN IN COLOR





LEGEND

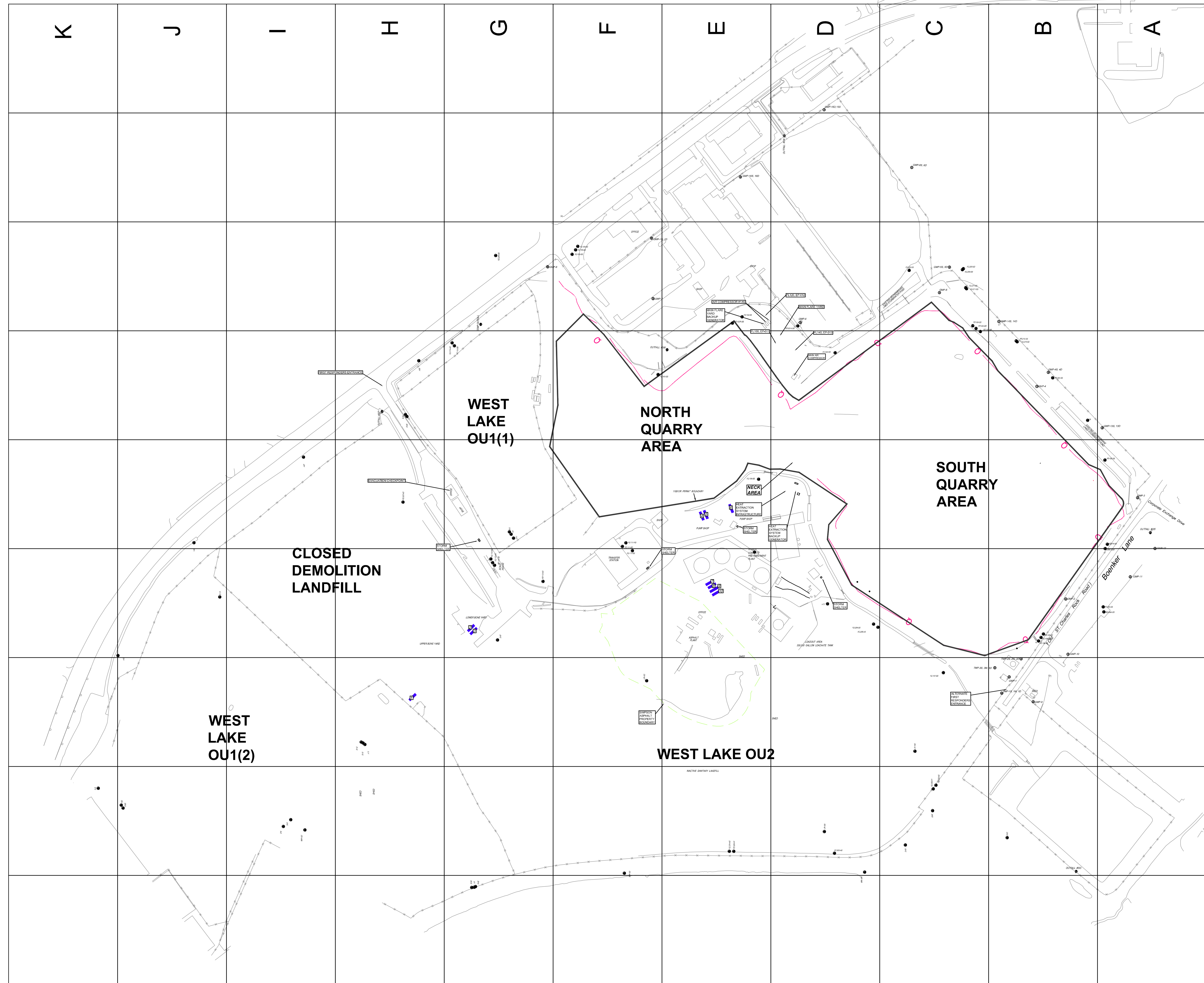
	SOLID WASTE BOUNDARY
	QUARRY WALL
	FENCE LINE
	GAS MONITORING PROBE
	PIEZOMETER MONITORING WELL



DISCLAIMER:
 THE EXISTENCE AND APPROXIMATE LOCATION OF UTILITIES KNOWN TO EXIST, AS SHOWN ON THESE DRAWINGS ARE BASED ON THE BEST INFORMATION PROVIDED TO FEI AT THE TIME OF THIS SUBMITTAL. THIS INFORMATION HAS BEEN PROVIDED TO FEI "AS-IS" AND FEI EXPRESSLY DISCLAIMS ANY REPRESENTATION OR WARRANTY AS TO THE COMPLETENESS OR ACCURACY OF THE INFORMATION FOR ANY USE. IT IS THE RESPONSIBILITY OF ANY PARTIES PERFORMING WORK TO VERIFY THE EXISTENCE, LOCATION AND STATUS OF ANY FACILITY. SUCH VERIFICATION INCLUDES DIRECT CONTACT WITH THE LISTED UTILITIES.

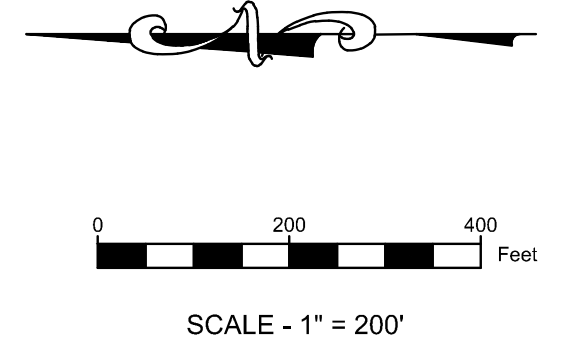
NOTES:
 AERIAL TOPOGRAPHY AND PHOTOGRAPHY PROVIDED BY COOPER AERIAL SURVEYS CO. AND IS DATED DECEMBER 10, 2019.

<p>PREPARED BY DANIEL RICHARD FEEZOR PE-030292</p>	<p>BRIDGETON LANDFILL 2020 Q1 INFRASTRUCTURE SUBMITTAL BRIDGETON, ST. LOUIS COUNTY, MO</p>	<p>BRIDGETON LANDFILL, LLC 13570 ST. CHARLES ROCK ROAD BRIDGETON, MISSOURI 63044</p>	<p>APRIL 2020 DESIGNED BY: AMR APPROVED BY: DRF</p>	<p>001</p>
<p>FEEZOR ENGINEERING, INC. Engineering for a Better World 3377 Holmberg Dr. Bridgeton, MO 63044 Ph: 217-483-3118 Missouri State Certificate of Authority # E-200912213</p>			<p>FULL SITE PLAN VIEW W/ AERIAL</p>	
<p>PROJECT NUMBER: BT-130-201 FILE PATH: C:\Users\amr\Desktop\Project Engineering\Bridgeton\10-10891-00\Aerial\Info\Aerial\000001-01.dwg</p>				



LEGEND	
	SOLID WASTE BOUNDARY
	QUARRY WALL
	FENCE LINE
	GAS MONITORING PROBE
	PIEZOMETER MONITORING WELL

9
8
7
6
5
4
3
2
1



NOTES:
 * AERIAL TOPOGRAPHY AND PHOTOGRAPHY PROVIDED BY COOPER AERIAL SURVEYS CO. AND IS DATED DECEMBER 10, 2019.

PREPARED BY: DANIEL RICHARD FEEZOR, PE-030292, APR 24, 2020

DESIGNED BY: AMR
 APPROVED BY: DRF

PROJECT: BRIDGETON LANDFILL, 2020 Q1 INFRASTRUCTURE SUBMITTAL, BRIDGETON, ST. LOUIS COUNTY, MO

PREPARED FOR: BRIDGETON LANDFILL, L.L.C., 13570 ST. CHARLES ROCK ROAD, BRIDGETON, MISSOURI 63044

DRAWING TITLE: **FULL SITE PLAN VIEW**

DATE: APRIL 2020
 DESIGNED BY: AMR
 APPROVED BY: DRF

REVISIONS: DATE DSN APV

DRAWING # **002**

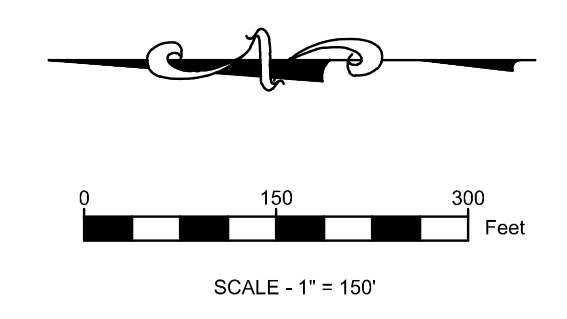
3377 Holenberg Dr. Bridgeton, MO 63044, Ph: 217-483-3118
 Missouri State Certificate Of Authority #: E-200912213

PROJECT NUMBER: BT-130-201 FILE PATH: C:\Users\amr\Desktop\Drawings\Bridgeton\2020 Q1\Bridgeton\2020 Q1\Full Site Plan View.dwg

DISCLAIMER:
 THE EXISTENCE AND APPROXIMATE LOCATION OF UTILITIES KNOWN TO EXIST, AS SHOWN ON THESE DRAWINGS ARE BASED ON THE BEST INFORMATION PROVIDED TO FEI AT THE TIME OF THIS SUBMITTAL. THIS INFORMATION HAS BEEN PROVIDED TO FEI "AS-IS" AND FEI EXPRESSLY DISCLAIMS ANY REPRESENTATION OR WARRANTY AS TO THE COMPLETENESS OR ACCURACY OF THE INFORMATION FOR ANY USE. IT IS THE RESPONSIBILITY OF ANY PARTIES PERFORMING WORK TO VERIFY THE EXISTENCE, LOCATION AND STATUS OF ANY FACILITY. SUCH VERIFICATION INCLUDES DIRECT CONTACT WITH THE LISTED UTILITIES.



- LEGEND**
- GMP-4 SOLID WASTE BOUNDARY
 - PZ-204-AS GAS MONITORING PROBE
 - GEW-38 GAS EXTRACTION WELL
 - ▲ ITS1 PIEZOMETER MONITORING WELL
 - SEW-63 GAS EXTRACTION WELL
 - PEW-20 INTERCEPTOR TRENCH SUMP
 - SURFACE EXTRACTION WELL
 - PERIMETER GAS EXTRACTION WELL
 - LFG ISOLATION VALVE
 - LEACHATE ISOLATION VALVE
 - FLOW METER
 - GRIT CHAMBER
 - LIFT STATION
 - CONDENSATE SUMP
 - CONDENSATE TRAP/HEADER CONNECTION SUMP
 - LEACHATE COLLECTION SUMP
 - HORIZONTAL COLLECTION SUMP
 - PERIMETER SUMP
 - LEACHATE COLLECTION SUMP
 - SURFACE COLLECTOR
 - TEMPERATURE MONITORING PROBE
 - SUBSURFACE RCP WELLS
 - TRENCH SUMP
 - INTERCEPTION TRENCH RISER
 - PERIMETER LEACHATE SUMP
 - WELL HEAD RISER
 - WELL BORE BOOT
 - TRENCH SUMP
 - OVER LINER TIE IN POINT
 - GAS INTERCEPTOR WELL
 - GAS INTERCEPTOR WELL/HEAT EXTRACTION POINT
 - CLEAN OUT
 - GAS EXTRACTION WELL WITH 4" STINGER
 - EXTRACTION POINT - ABANDONED
 - EXTRACTION POINT - TEMPORARILY DECOMMISSIONED
 - CONTAINMENT SUMP PUMP STATION FOR TOE STRIP DRAIN
 - DOWNSLOPE STRIP DRAIN COLLECTOR 6" RISER STUB
 - QUADRANT #
 - POWER PANEL
 - THERMOCOUPLE
 - QUARRY WALL
 - LEACHATE COLLECTION PIPING
 - DUAL CONTAINED LCS FORCEMAIN (SIZE VARIES)
 - DUAL CONTAINED PERIMETER FORCEMAIN (SIZE VARIES)
 - LEACHATE COLLECTION PIPING (SIZE VARIES)
 - TOE DRAIN
 - 4" PERFORATED TRENCH DRAIN
 - BUBBLE SUCKER
 - AIR LINE (PRESSURIZED BELOW GROUND)
 - BURIED LFG COLLECTION PIPING (SIZE VARIES)
 - 2" ABOVE GROUND LFG COLLECTION LATERAL PIPING
 - 4" ABOVE GROUND LFG COLLECTION LATERAL PIPING
 - 6" ABOVE GROUND LFG COLLECTION LATERAL PIPING
 - 8" ABOVE GROUND LFG COLLECTION LATERAL PIPING
 - 10" ABOVE GROUND LFG COLLECTION LATERAL PIPING
 - 12" ABOVE GROUND LFG COLLECTION LATERAL PIPING
 - 18" ABOVE GROUND LFG COLLECTION LATERAL PIPING
 - 24" ABOVE GROUND LFG COLLECTION LATERAL PIPING
 - 2" PRESSURIZED AIR / 2" FORCEMAIN IN COMMON TRENCH
 - ABOVEGROUND ELECTRIC LINE
 - UNDERGROUND ELECTRIC LINE
 - SANITARY SEWER
 - MSD DISCHARGE FORCEMAIN
 - WATERMAIN
 - NGAS NATURAL GAS LINE
 - GAS PROPANE GAS LINE
 - FO FIBER OPTIC LINE
 - TELEPHONE
 - FENCE LINE
 - INTERCEPTOR TRENCH
 - HEAT EXTRACTION EFFLUENT PIPING
 - HEAT EXTRACTION INFLUENT PIPING



NOTES:
 1. AERIAL TOPOGRAPHY AND PHOTOGRAPHY PROVIDED BY COOPER AERIAL SURVEYS CO. AND IS DATED DECEMBER 10, 2019.

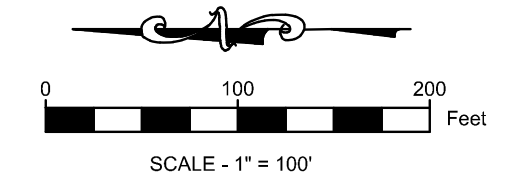
DISCLAIMER:
 THE EXISTENCE AND APPROXIMATE LOCATION OF UTILITIES KNOWN TO EXIST, AS SHOWN ON THESE DRAWINGS ARE BASED ON THE BEST INFORMATION PROVIDED TO FEI AT THE TIME OF THIS SUBMITTAL. THIS INFORMATION HAS BEEN PROVIDED TO FEI "AS-IS" AND FEI EXPRESSLY DISCLAIMS ANY REPRESENTATION OR WARRANTY AS TO THE COMPLETENESS OR ACCURACY OF THE INFORMATION FOR ANY USE. IT IS THE RESPONSIBILITY OF ANY PARTIES PERFORMING WORK TO VERIFY THE EXISTENCE, LOCATION AND STATUS OF ANY FACILITY. SUCH VERIFICATION INCLUDES DIRECT CONTACT WITH THE LISTED UTILITIES.

	PREPARED BY: DANIEL RICHARD FEEZOR REGISTERED PROFESSIONAL ENGINEER NO. 030292	PROJECT: BRIDGETON LANDFILL 2020 Q1 INFRASTRUCTURE SUBMITTAL BRIDGETON, ST. LOUIS COUNTY, MO	PREPARED FOR: BRIDGETON LANDFILL, LLC 13570 ST. CHARLES ROCK ROAD BRIDGETON, MISSOURI 63044	APRIL 2020 DESIGNED BY: AMR APPROVED BY: DRF	DRAWING # 003	
	 3377 Huberberg Dr. Bridgeton, MO 63044 Ph: 217-483-3118 Missouri State Certificate Of Authority #: E-200922211	DRAWING TITLE: 2020 Q1 SITE INFRASTRUCTURE	PROJECT NUMBER: B1-13020 FILE PATH: C:\Users\amr\Desktop\Bridgeton\2020 Q1\Bridgeton\2020 Q1\003.dwg	REVISIONS:	DATE:	DSK:



LEGEND

	SOLID WASTE BOUNDARY
	GAS MONITORING PROBE
	PIEZOMETER MONITORING WELL
	GAS EXTRACTION WELL
	INTERCEPTOR TRENCH SUMP
	SURFACE EXTRACTION WELL
	PERIMETER GAS EXTRACTION WELL
	LFG ISOLATION VALVE
	LEACHATE ISOLATION VALVE
	FLOW METER
	GRIT CHAMBER
	LIFT STATION
	CONDENSATE SUMP
	CONDENSATE TRAP/HEADER CONNECTION SUMP
	LEACHATE COLLECTION SUMP
	HORIZONTAL COLLECTION SUMP
	PERIMETER SUMP
	LEACHATE COLLECTION SUMP
	SURFACE COLLECTOR
	TEMPERATURE MONITORING PROBE
	SUBSURFACE RCP WELLS
	TRENCH SUMP
	INTERCEPTION TRENCH RISER
	PERIMETER LEACHATE SUMP
	WELL HEAD RISER
	WELL BORE BOOT
	TRENCH SUMP
	OVER LINER TIE IN POINT
	GAS INTERCEPTOR WELL
	GAS INTERCEPTOR WELL/HEAT EXTRACTION POINT
	CLEAN OUT
	GAS EXTRACTION WELL WITH 4" STINGER
	EXTRACTION POINT - ABANDONED
	EXTRACTION POINT - TEMPORARILY DECOMMISSIONED
	CONTAINMENT SUMP PUMP STATION FOR TOE STRIP DRAIN
	DOWNSLOPE STRIP DRAIN COLLECTOR 6" RISER STUB
	QUADRANT #
	POWER PANEL
	THERMOCOUPLE
	QUARRY WALL
	LEACHATE COLLECTION PIPING
	DUAL CONTAINED LGS FORCEMAIN (SIZE VARIES)
	DUAL CONTAINED PERIMETER FORCEMAIN (SIZE VARIES)
	LEACHATE COLLECTION PIPING (SIZE VARIES)
	TOE DRAIN
	4" PERFORATED TRENCH DRAIN
	BUBBLE SUCKER
	AIR LINE (PRESSURIZED BELOW GROUND)
	BURIED LFG COLLECTION PIPING (SIZE VARIES)
	2" ABOVE GROUND LFG COLLECTION LATERAL PIPING
	4" ABOVE GROUND LFG COLLECTION LATERAL PIPING
	6" ABOVE GROUND LFG COLLECTION LATERAL PIPING
	8" ABOVE GROUND LFG COLLECTION LATERAL PIPING
	10" ABOVE GROUND LFG COLLECTION LATERAL PIPING
	12" ABOVE GROUND LFG COLLECTION LATERAL PIPING
	18" ABOVE GROUND LFG COLLECTION LATERAL PIPING
	24" ABOVE GROUND LFG COLLECTION LATERAL PIPING
	2" PRESSURIZED AIR / 2" FORCEMAIN IN COMMON TRENCH
	ABOVEGROUND ELECTRIC LINE
	UNDERGROUND ELECTRIC LINE
	SANITARY SEWER
	MSD DISCHARGE FORCEMAIN
	WATERMAIN
	NATURAL GAS LINE
	PROPANE GAS LINE
	FIBER OPTIC LINE
	TELEPHONE
	FENCE LINE
	INTERCEPTOR TRENCH
	HEAT EXTRACTION EFFLUENT PIPING
	HEAT EXTRACTION INFLUENT PIPING



DISCLAIMER:
 THE EXISTENCE AND APPROXIMATE LOCATION OF UTILITIES KNOWN TO EXIST, AS SHOWN ON THESE DRAWINGS ARE BASED ON THE BEST INFORMATION PROVIDED TO FEI AT THE TIME OF THIS SUBMITTAL. THIS INFORMATION HAS BEEN PROVIDED TO FEI "AS-IS" AND FEI EXPRESSLY DISCLAIMS ANY REPRESENTATION OR WARRANTY AS TO THE COMPLETENESS OR ACCURACY OF THE INFORMATION FOR ANY USE. IT IS THE RESPONSIBILITY OF ANY PARTIES PERFORMING WORK TO VERIFY THE EXISTENCE, LOCATION AND STATUS OF ANY FACILITY. SUCH VERIFICATION INCLUDES DIRECT CONTACT WITH THE LISTED UTILITIES.

NOTES:
 AERIAL TOPOGRAPHY AND PHOTOGRAPHY PROVIDED BY COOPER AERIAL SURVEYS CO. AND IS DATED DECEMBER 10, 2019.

DANIEL RICHARD FEEZOR
 PE-030292
 REGISTERED PROFESSIONAL ENGINEER
 STATE OF MISSOURI
 4/14/20

PREPARED BY:
 DANIEL RICHARD FEEZOR
 ENGINEERING FOR A BETTER WORLD
FEEZOR ENGINEERING, INC.
 3377 Hubertberg Dr. Bridgeton, MO 63044, Ph: 217-483-3118
 Missouri State Certificate Of Authority #: E-200922211

PROJECT:
 BRIDGETON LANDFILL
 2020 Q1 INFRASTRUCTURE SUBMITTAL
 BRIDGETON, ST. LOUIS COUNTY, MO

DRAWING TITLE:
**2020 Q1 SITE INFRASTRUCTURE
 (UPDATES IN Q1 SHOWN IN COLOR)**

PREPARED FOR:
 BRIDGETON LANDFILL, LLC
 13570 ST. CHARLES ROCK ROAD
 BRIDGETON, MISSOURI 63044

APRIL 2020
 DESIGNED BY: AMR
 APPROVED BY: DRF

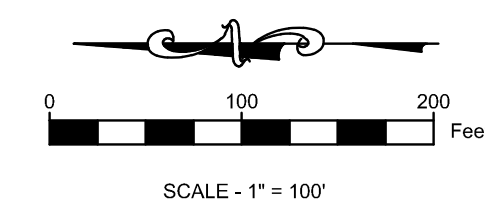
REVISIONS:
 DATE DSN APV

DRAWING # **004**

PROJECT NUMBER: B71-130-20 | FILE PATH: C:\Users\danf\OneDrive - Daniel Richard Feezor\Documents\2020 Q1\Submittal\2020Q1_Site\2020Q1_Site_004.dwg



LEGEND	
	SOLID WASTE BOUNDARY
	GAS MONITORING PROBE
	PIEZOMETER MONITORING WELL
	GAS EXTRACTION WELL
	INTERCEPTOR TRENCH SUMP
	SURFACE EXTRACTION WELL
	PERIMETER GAS EXTRACTION WELL
	LFG ISOLATION VALVE
	LEACHATE ISOLATION VALVE
	FLOW METER
	GRIT CHAMBER
	LIFT STATION
	CONDENSATE SUMP
	CONDENSATE TRAP/HEADER CONNECTION SUMP
	LEACHATE COLLECTION SUMP
	HORIZONTAL COLLECTION SUMP
	PERIMETER SUMP
	LEACHATE COLLECTION SUMP
	SURFACE COLLECTOR
	TEMPERATURE MONITORING PROBE
	SUBSURFACE RCP WELLS
	TRENCH SUMP
	INTERCEPTION TRENCH RISER
	PERIMETER LEACHATE SUMP
	WELL HEAD RISER
	WELL BORE BOOT
	TRENCH SUMP
	OVER LINER TIE IN POINT
	GAS INTERCEPTOR WELL
	GAS INTERCEPTOR WELL/HEAT EXTRACTION POINT
	CLEAN OUT
	GAS EXTRACTION WELL WITH 4" STINGER
	EXTRACTION POINT - ABANDONED
	EXTRACTION POINT - TEMPORARILY DECOMMISSIONED
	CONTAINMENT SUMP PUMP STATION FOR TOE STRIP DRAIN
	DOWNSLOPE STRIP DRAIN COLLECTOR 6" RISER STUB
	QUADRANT #
	POWER PANEL
	THERMOCOUPLE
	QUARRY WALL
	LEACHATE COLLECTION PIPING
	DUAL CONTAINED LCS FORCEMAIN (SIZE VARIES)
	DUAL CONTAINED PERIMETER FORCEMAIN (SIZE VARIES)
	LEACHATE COLLECTION PIPING (SIZE VARIES)
	TOE DRAIN
	4" PERFORATED TRENCH DRAIN
	BUBBLE SUCKER
	AIR LINE (PRESSURIZED BELOW GROUND)
	BURIED LFG COLLECTION PIPING (SIZE VARIES)
	2" ABOVE GROUND LFG COLLECTION LATERAL PIPING
	4" ABOVE GROUND LFG COLLECTION LATERAL PIPING
	6" ABOVE GROUND LFG COLLECTION LATERAL PIPING
	8" ABOVE GROUND LFG COLLECTION LATERAL PIPING
	10" ABOVE GROUND LFG COLLECTION LATERAL PIPING
	12" ABOVE GROUND LFG COLLECTION LATERAL PIPING
	18" ABOVE GROUND LFG COLLECTION LATERAL PIPING
	24" ABOVE GROUND LFG COLLECTION LATERAL PIPING
	2" PRESSURIZED AIR / 2" FORCEMAIN IN COMMON TRENCH
	ABOVEGROUND ELECTRIC LINE
	UNDERGROUND ELECTRIC LINE
	SANITARY SEWER
	MSD DISCHARGE FORCEMAIN
	WATERMAIN
	NATURAL GAS LINE
	PROPANE GAS LINE
	FIBER OPTIC LINE
	TELEPHONE
	FENCE LINE
	INTERCEPTOR TRENCH
	HEAT EXTRACTION EFFLUENT PIPING
	HEAT EXTRACTION INFLUENT PIPING



DISCLAIMER:
 THE EXISTENCE AND APPROXIMATE LOCATION OF UTILITIES KNOWN TO EXIST, AS SHOWN ON THESE DRAWINGS ARE BASED ON THE BEST INFORMATION PROVIDED TO FEI AT THE TIME OF THIS SUBMITTAL. THIS INFORMATION HAS BEEN PROVIDED TO FEI AS-IS AND FEI EXPRESSLY DISCLAIMS ANY REPRESENTATION OR WARRANTY AS TO THE COMPLETENESS OR ACCURACY OF THE INFORMATION FOR ANY USE. IT IS THE RESPONSIBILITY OF ANY PARTIES PERFORMING WORK TO VERIFY THE EXISTENCE, LOCATION AND STATUS OF ANY FACILITY. SUCH VERIFICATION INCLUDES DIRECT CONTACT WITH THE LISTED UTILITIES.

NOTES:
 AERIAL TOPOGRAPHY AND PHOTOGRAPHY PROVIDED BY COOPER AERIAL SURVEYS CO. AND IS DATED DECEMBER 10, 2019.

	PREPARED BY: DANIEL RICHARD FEEZOR PE-030292	PROJECT: BRIDGETON LANDFILL 2020 Q1 INFRASTRUCTURE SUBMITTAL BRIDGETON, ST. LOUIS COUNTY, MO	PREPARED FOR: BRIDGETON LANDFILL, LLC 13570 ST. CHARLES ROCK ROAD BRIDGETON, MISSOURI 63044	APRIL 2020 DESIGNED BY: AMR APPROVED BY: DRF	DRAWING # 005
DRAWING TITLE: 2020 Q1 SITE INFRASTRUCTURE (REMOVED IN Q1 SHOWN IN RED)			REVISIONS:		
PROJECT NUMBER: BT-130-20 FILE PATH: C:\Users\amr\Desktop\Bridgeton\2020Q1\2020Q1-01\2020Q1-01-005.dwg			DATE DSK APV		

3377 Hubertberg Dr. Bridgeton, MO 63044, Ph: 217-483-3118
 Missouri State Certificate Of Authority #: E-200912211