

---

# BRIDGETON LANDFILL

## 2017 Q2 INFRASTRUCTURE UPDATE

---

JULY 2017  
PREPARED FOR:

**BRIDGETON LANDFILL, LLC**  
13570 ST. CHARLES ROCK ROAD  
BRIDGETON, MISSOURI 63044



3377 HOLLENBERG DRIVE  
BRIDGETON, MO 63044  
TEL. (217) 483-3118  
FAX. (217) 483-2356

INDEX OF DRAWINGS	
	TITLE PAGE
001	FULL SITE PLAN VIEW W/ AERIAL
002	FULL SITE PLAN VIEW
003	2017 Q2 SITE INFRASTRUCTURE PLAN
004	2017 Q2 SITE INFRASTRUCTURE - UPDATES IN Q2 SHOWN IN COLOR



*Dan R Feezor*  
7/27/17





LEGEND

SOLID WASTE BOUNDARY

Q

QUARRY WALL

X

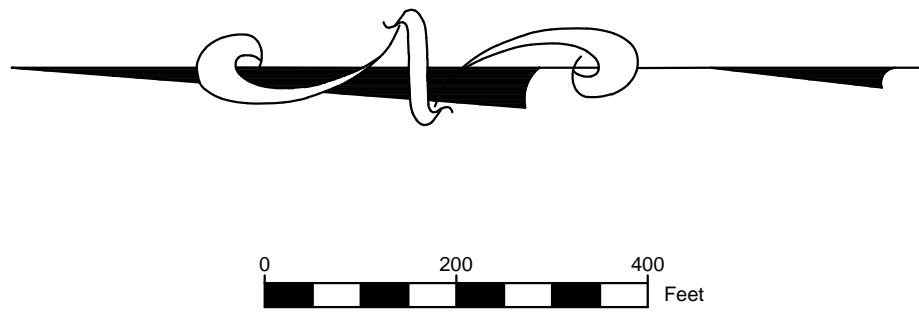
FENCE LINE

GMP-4

PZ-105-SS

GAS MONITORING PROBE

PIEZOMETER MONITORING WELL

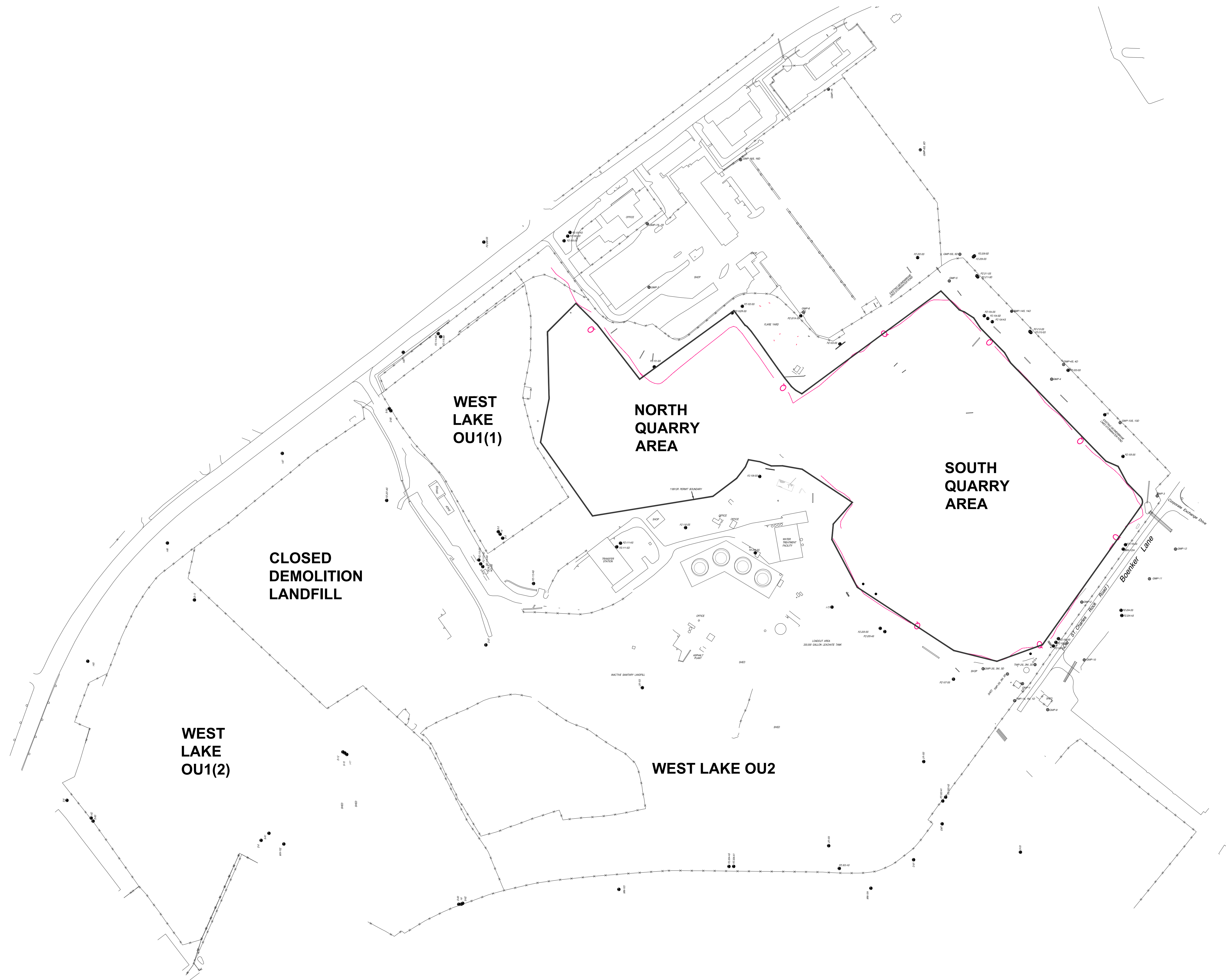


NOTES:

- AERIAL TOPOGRAPHY PROVIDED BY COOPER AERIAL SURVEYS CO. AND IS DATED DECEMBER 2, 2016

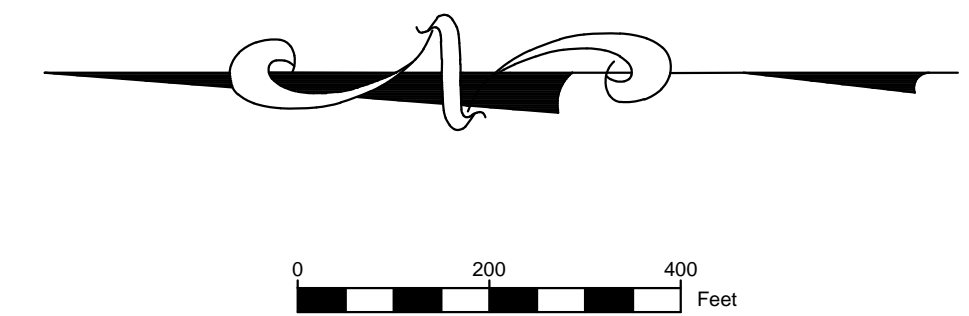
BRIDGETON LANDFILL, LLC 13570 ST. CHARLES ROCK ROAD BRIDGETON, MISSOURI 63044	BRIDGETON LANDFILL 2017 Q2 INFRASTRUCTURE UPDATE	 Engineering for a Better World FEEZOR ENGINEERING, INC.	JULY 2017 DESIGNED BY: AMR APPROVED BY: DRF	DRAWING NO.:  <b>001</b>
FULL SITE PLAN VIEW W/ AERIAL			REVISION	
PROJECT NO: BT-130   FILE PATH: D:\Aerial\BT\Document\Bridgeton (Feesor Engineering)\Bridgeton 2017 Q2 - Infrastructure Update - WSR\000001\2017 Q2 Infrastructure Update				





**LEGEND**

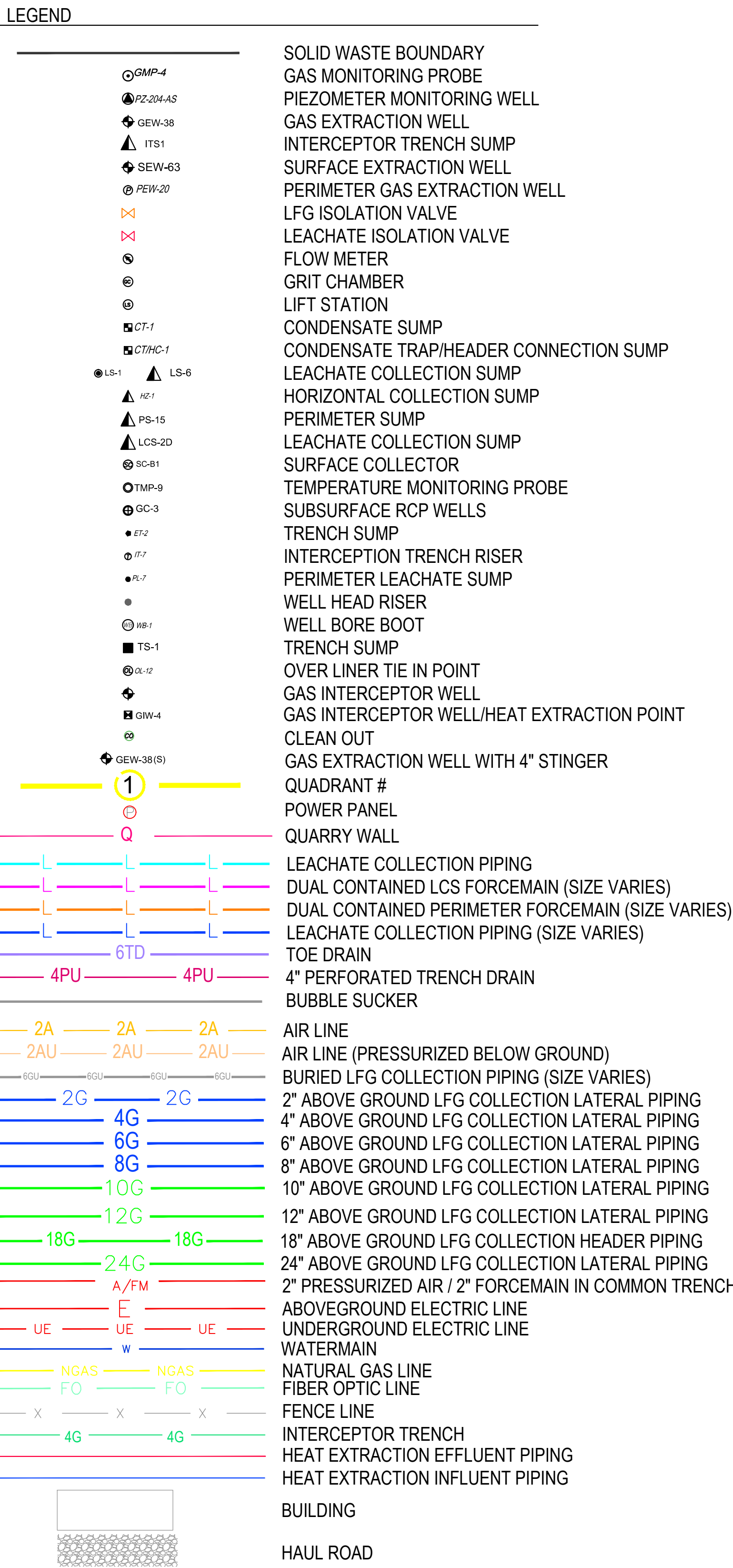
—	SOLID WASTE BOUNDARY
— Q —	QUARRY WALL
— X —	FENCE LINE
⊙ GMP-4	GAS MONITORING PROBE
● PE-105-SS	PIEZOMETER MONITORING WELL











1. - GAS AND LIQUID EXTRACTION POINTS THAT HAVE BEEN TEMPORARILY DECOMMISSIONED (PHYSICALLY DISCONNECTED FROM THE COLLECTION AND CONTROL SYSTEM DUE TO DECLINING GAS FLOWS), AND/OR ABANDONED (PERMANENTLY AND PHYSICALLY REMOVED FROM THE COLLECTION AND CONTROL SYSTEM DUE TO INABILITY TO COLLECT GAS) HAVE BEEN REMOVED FROM THE SITE INFRASTRUCTURE UPDATE.
2. - SIGNIFICANT CONSTRUCTION IS CURRENTLY OCCURRING IN THE NORTH QUARRY AREA. AS-BUILTS TO BE SUBMITTED AND INCORPORATED INTO THE QUARTERLY UPDATES UPON COMPLETION AND CERTIFICATION.

