
BRIDGETON LANDFILL

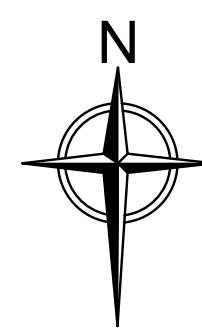
2021 Q1 INFRASTRUCTURE UPDATE

APRIL 2021
PREPARED FOR:

BRIDGETON LANDFILL, LLC
13570 ST. CHARLES ROCK ROAD
BRIDGETON, MISSOURI 63044



LOCATION MAP

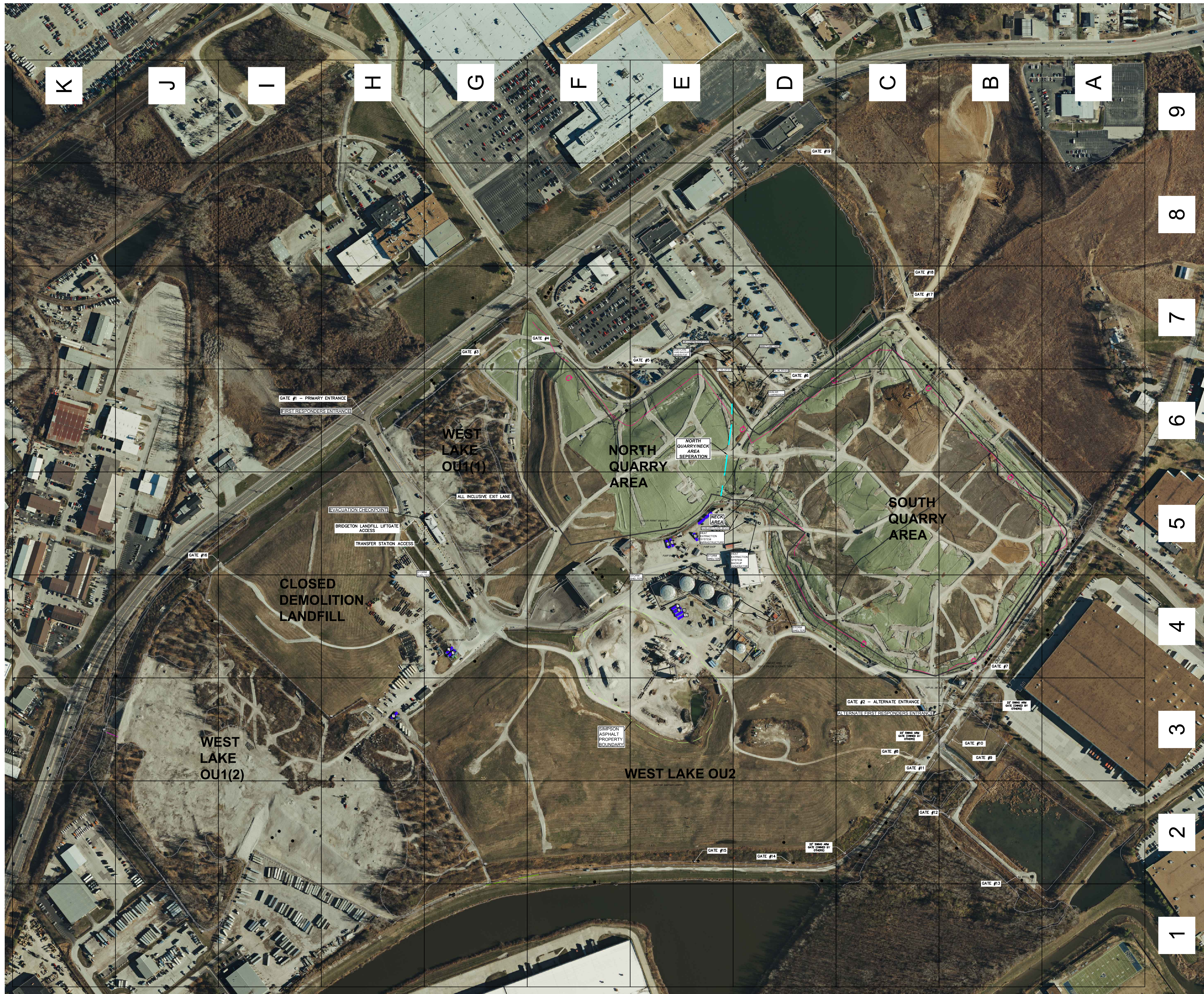


3377 HOLLENBERG DRIVE
BRIDGETON, MO 63044
TEL. (217) 483-3118

INDEX OF DRAWINGS

	TITLE PAGE
001	FULL SITE PLAN VIEW W/ AERIAL
001A	FULL SITE PLAN VIEW W/ AERIAL - ALTERNATE VIEW
002	FULL SITE PLAN VIEW
003	2021 Q1 SITE INFRASTRUCTURE PLAN
004	2021 Q1 SITE INFRASTRUCTURE - UPDATES IN Q1 SHOWN IN COLOR
005	2021 Q1 SITE INFRASTRUCTURE - REMOVED IN Q1 SHOWN IN COLOR





LEGEND

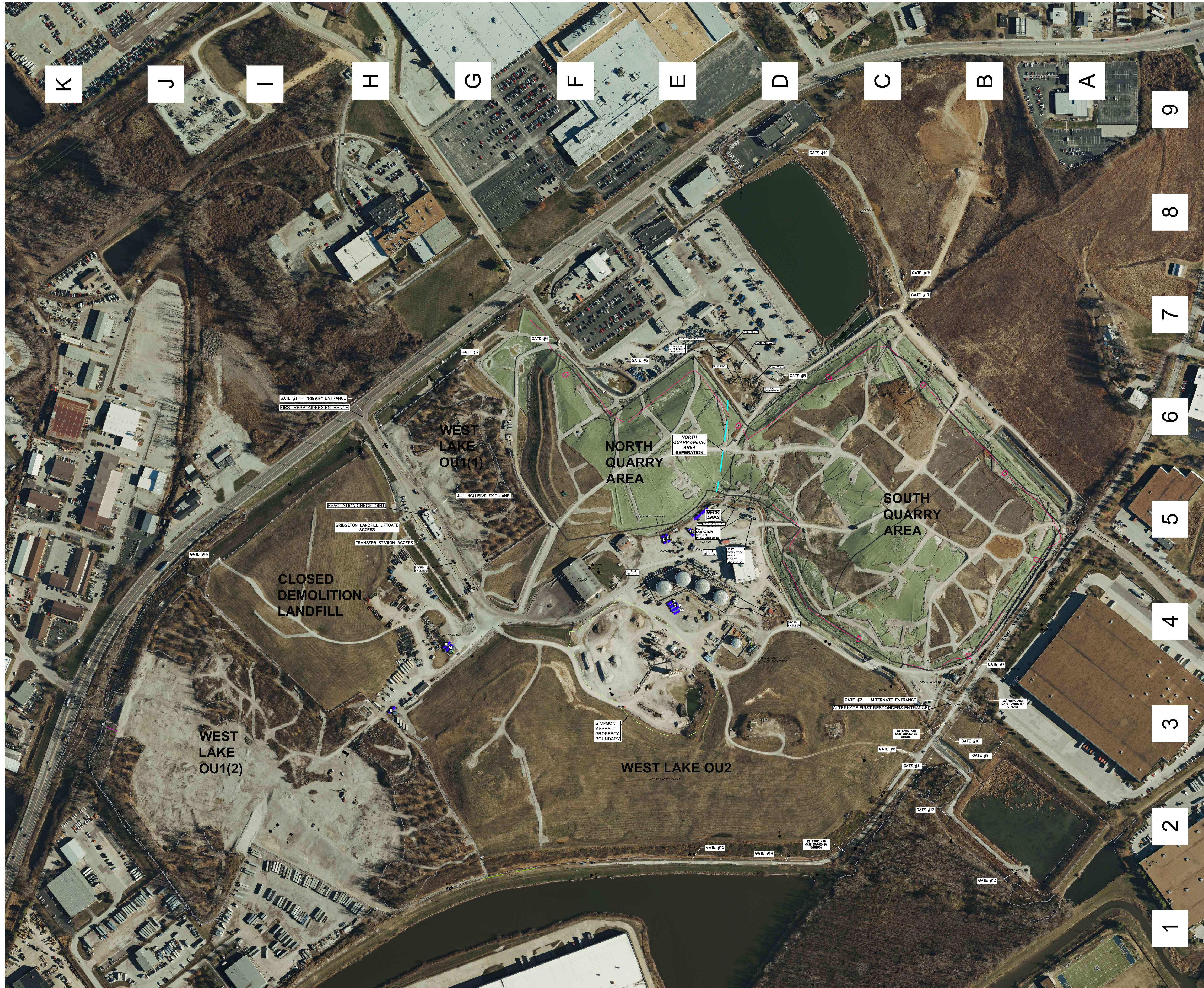
	SOLID WASTE BOUNDARY
	NORTH QUARRY - NECK SEPERATION BOUNDARY
	QUARRY WALL
	FENCE LINE
	GAS MONITORING PROBE
	PIEZOMETER MONITORING WELL

NOTES:
 * AERIAL TOPOGRAPHY AND PHOTOGRAPHY PROVIDED BY COOPER AERIAL SURVEYS CO. AND IS DATED DECEMBER 9, 2020.

DISCLAIMER:
 THE EXISTENCE AND APPROXIMATE LOCATION OF UTILITIES KNOWN TO EXIST, AS SHOWN ON THESE DRAWINGS ARE BASED ON THE BEST INFORMATION PROVIDED TO FEI AT THE TIME OF THIS SUBMITTAL. THIS INFORMATION HAS BEEN PROVIDED TO FEI "AS-IS" AND FEI EXPRESSLY DISCLAIMS ANY REPRESENTATION OR WARRANTY AS TO THE COMPLETENESS OR ACCURACY OF THE INFORMATION FOR ANY USE. IT IS THE RESPONSIBILITY OF ANY PARTIES PERFORMING WORK TO VERIFY THE EXISTENCE, LOCATION AND STATUS OF ANY FACILITY. SUCH VERIFICATION INCLUDES DIRECT CONTACT WITH THE LISTED UTILITIES.

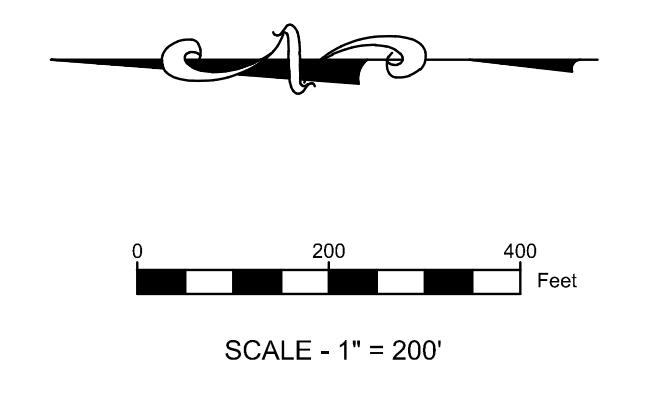
PROJECT	BRIDGETON LANDFILL 2021 Q1 INFRASTRUCTURE SUBMITTAL BRIDGETON, ST. LOUIS COUNTY, MO	PREPARED FOR	BRIDGETON LANDFILL, LLC 13570 ST. CHARLES ROCK ROAD BRIDGETON, MISSOURI 63044	DESIGNED BY: AMR	APPROVED BY: DRF	DATE	DSN	APV.	DRAWING #
									001
<p>3377 Hallenberg Dr. Bridgeton, MO 63044 Ph: 217-483-3118 Missouri State Certificate Of Authority #: E-200912213</p>									

FULL SITE PLAN VIEW W/ AERIAL



LEGEND

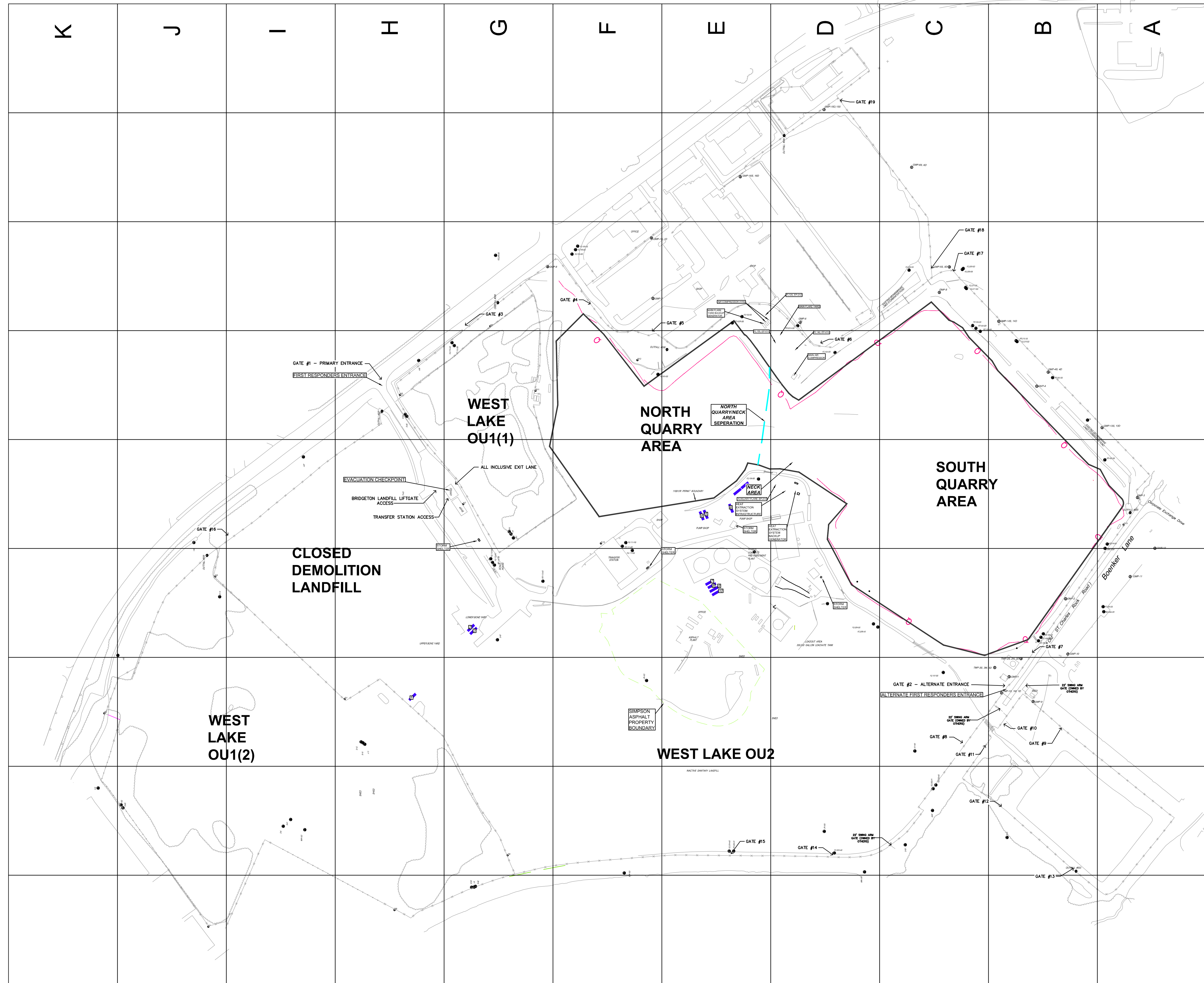
	SOLID WASTE BOUNDARY
	NORTH QUARRY - NECK SEPARATION BOUNDARY
	QUARRY WALL
	FENCE LINE
	GAS MONITORING PROBE
	PIEZOMETER MONITORING WELL



NOTES:
 * AERIAL TOPOGRAPHY AND PHOTOGRAPHY PROVIDED BY COOPER AERIAL SURVEYS CO. AND IS DATED DECEMBER 9, 2020.

PREPARED BY: DANIEL RICHARD FEEZOR PE-030292	PROJECT: BRIDGETON LANDFILL 2021 Q1 INFRASTRUCTURE SUBMITTAL BRIDGETON, ST. LOUIS COUNTY, MO	PREPARED FOR: BRIDGETON LANDFILL, LLC 13570 ST. CHARLES ROCK ROAD BRIDGETON, MISSOURI 63044	DRAWING # 001A
		APRIL 2021 DESIGNED BY: AMR APPROVED BY: DRF	REVISIONS:
FULL SITE PLAN VIEW W/ AERIAL			DATE: DSN: APV:
PROJECT NUMBER: BT-130211 FILE PATH: C:\work\Brideton\Brideton\Drawings\GIS\2021-01\Brideton\GIS\001A - 01.dwg			

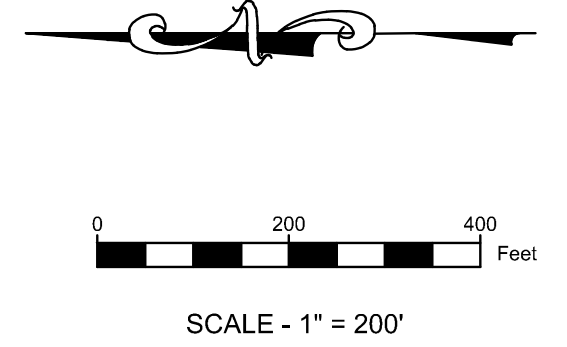
DISCLAIMER:
 THE EXISTENCE AND APPROXIMATE LOCATION OF UTILITIES KNOWN TO EXIST, AS SHOWN ON THESE DRAWINGS ARE BASED ON THE BEST INFORMATION PROVIDED TO FEI AT THE TIME OF THIS SUBMITTAL. THIS INFORMATION HAS BEEN PROVIDED TO FEI "AS-IS" AND FEI EXPRESSLY DISCLAIMS ANY REPRESENTATION OR WARRANTY AS TO THE COMPLETENESS OR ACCURACY OF THE INFORMATION FOR ANY USE. IT IS THE RESPONSIBILITY OF ANY PARTIES PERFORMING WORK TO VERIFY THE EXISTENCE, LOCATION AND STATUS OF ANY FACILITY. SUCH VERIFICATION INCLUDES DIRECT CONTACT WITH THE LISTED UTILITIES.



LEGEND

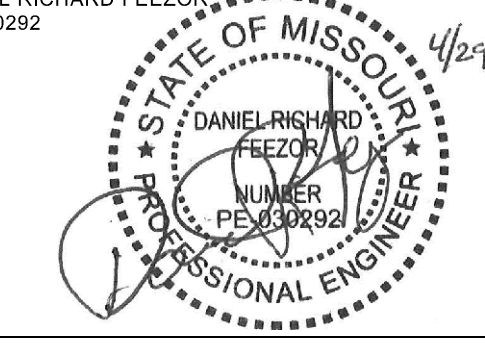
	SOLID WASTE BOUNDARY
	NORTH QUARRY - NECK SEPARATION BOUNDARY
	QUARRY WALL
	FENCE LINE
	GAS MONITORING PROBE
	PIEZOMETER MONITORING WELL

9
8
7
6
5
4
3
2
1



NOTES:
 * AERIAL TOPOGRAPHY AND PHOTOGRAPHY PROVIDED BY COOPER AERIAL SURVEYS CO. AND IS DATED DECEMBER 9, 2020.
 DANIEL RICHARD FEEZOR, PE-030292

DISCLAIMER:
 THE EXISTENCE AND APPROXIMATE LOCATION OF UTILITIES KNOWN TO EXIST, AS SHOWN ON THESE DRAWINGS ARE BASED ON THE BEST INFORMATION PROVIDED TO FEI AT THE TIME OF THIS SUBMITTAL. THIS INFORMATION HAS BEEN PROVIDED TO FEI "AS-IS" AND FEI EXPRESSLY DISCLAIMS ANY REPRESENTATION OR WARRANTY AS TO THE COMPLETENESS OR ACCURACY OF THE INFORMATION FOR ANY USE. IT IS THE RESPONSIBILITY OF ANY PARTIES PERFORMING WORK TO VERIFY THE EXISTENCE, LOCATION AND STATUS OF ANY FACILITY. SUCH VERIFICATION INCLUDES DIRECT CONTACT WITH THE LISTED UTILITIES.

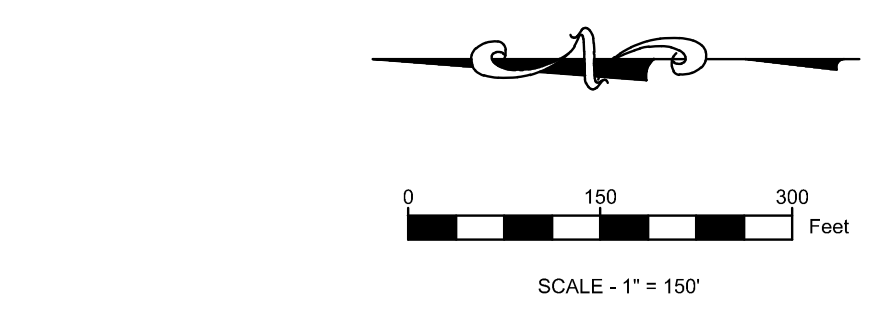


PROJECT	BRIDGETON LANDFILL 2021 Q1 INFRASTRUCTURE SUBMITTAL BRIDGETON, ST. LOUIS COUNTY, MO	PREPARED FOR	BRIDGETON LANDFILL, LLC 13570 ST. CHARLES ROCK ROAD BRIDGETON, MISSOURI 63044	APRIL 2021 DESIGNED BY: AMR APPROVED BY: DRF	002
DRAWING TITLE	FULL SITE PLAN VIEW				
REVISIONS:	DATE	DSN	APV.		



LEGEND

○ COMP-4	SOLID WASTE BOUNDARY
● PZ-204-AS	GAS MONITORING PROBE
● GEW-38	PIEZOMETER MONITORING WELL
▲ ITS1	GAS EXTRACTION WELL
● SEW-63	INTERCEPTOR TRENCH SUMP
● PEH-20	SURFACE EXTRACTION WELL
○	PERIMETER GAS EXTRACTION WELL
○	LFG ISOLATION VALVE
○	LEACHATE ISOLATION VALVE
○	FLOW METER
○	GRIT CHAMBER
○	LIFT STATION
○	CONDENSATE SUMP
○	CONDENSATE TRAP/HEADER CONNECTION SUMP
○	LEACHATE COLLECTION SUMP
○	HORIZONTAL COLLECTION SUMP
○	PERIMETER SUMP
○	LEACHATE COLLECTION SUMP
○	SURFACE COLLECTOR
○	TEMPERATURE MONITORING PROBE
○	SUBSURFACE RCP WELLS
○	TRENCH SUMP
○	INTERCEPTION TRENCH RISER
○	PERIMETER LEACHATE SUMP
○	WELL HEAD RISER
○	WELL BORE BOOT
○	TRENCH SUMP
○	OVER LINER TIE IN POINT
○	GAS INTERCEPTOR WELL
○	GAS INTERCEPTOR WELL/HEAT EXTRACTION POINT
○	CLEAN OUT
○	GAS EXTRACTION WELL WITH 4" STINGER
○	EXTRACTION POINT - ABANDONED
○	EXTRACTION POINT - TEMPORARILY DECOMMISSIONED
○	CONTAINMENT SUMP PUMP STATION FOR TOE STRIP DRAIN
○	DOWNSLOPE STRIP DRAIN COLLECTOR 6" RISER STUB
○	QUADRANT #
○	POWER PANEL
○	THERMOCOUPLE
○	QUARRY WALL
○	LEACHATE COLLECTION PIPING
○	DUAL CONTAINED LCS FORCEMAIN (SIZE VARIES)
○	DUAL CONTAINED PERIMETER FORCEMAIN (SIZE VARIES)
○	LEACHATE COLLECTION PIPING (SIZE VARIES)
○	TOE DRAIN
○	4" PERFORATED TRENCH DRAIN
○	BUBBLE SUCKER
○	AIR LINE (PRESSURIZED BELOW GROUND)
○	BURIED LFG COLLECTION PIPING (SIZE VARIES)
○	2" ABOVE GROUND LFG COLLECTION LATERAL PIPING
○	4" ABOVE GROUND LFG COLLECTION LATERAL PIPING
○	6" ABOVE GROUND LFG COLLECTION LATERAL PIPING
○	8" ABOVE GROUND LFG COLLECTION LATERAL PIPING
○	10" ABOVE GROUND LFG COLLECTION LATERAL PIPING
○	12" ABOVE GROUND LFG COLLECTION LATERAL PIPING
○	18" ABOVE GROUND LFG COLLECTION HEADER PIPING
○	24" ABOVE GROUND LFG COLLECTION LATERAL PIPING
○	2" PRESSURIZED AIR / 2" FORCEMAIN IN COMMON TRENCH
○	ABOVEGROUND ELECTRIC LINE
○	UNDERGROUND ELECTRIC LINE
○	SANITARY SEWER
○	MSD DISCHARGE FORCEMAIN
○	WATERMAIN
○	NGAS NATURAL GAS LINE
○	GAS PROPANE GAS LINE
○	FO FIBER OPTIC LINE
○	TELEPHONE
○	FENCE LINE
○	4G INTERCEPTOR TRENCH
○	HEAT EXTRACTION EFFLUENT PIPING
○	HEAT EXTRACTION INFLUENT PIPING



NOTES:
 * AERIAL TOPOGRAPHY AND PHOTOGRAPHY PROVIDED BY COOPER AERIAL SURVEYS CO. AND IS DATED DECEMBER 9, 2020.

DISCLAIMER:
 THE EXISTENCE AND APPROXIMATE LOCATION OF UTILITIES KNOWN TO EXIST, AS SHOWN ON THESE DRAWINGS ARE BASED ON THE BEST INFORMATION PROVIDED TO FEI AT THE TIME OF THIS SUBMITTAL. THIS INFORMATION HAS BEEN PROVIDED TO FEI "AS-IS" AND FEI EXPRESSLY DISCLAIMS ANY REPRESENTATION OR WARRANTY AS TO THE COMPLETENESS OR ACCURACY OF THE INFORMATION FOR ANY USE. IT IS THE RESPONSIBILITY OF ANY PARTIES PERFORMING WORK TO VERIFY THE EXISTENCE, LOCATION AND STATUS OF ANY FACILITY. SUCH VERIFICATION INCLUDES DIRECT CONTACT WITH THE LISTED UTILITIES.

PREPARED BY: DANIEL RICHARD FEEZOR, PE-030292
PROFESSIONAL ENGINEER

PROJECT: BRIDGETON LANDFILL 2021 Q1 INFRASTRUCTURE SUBMITTAL
 BRIDGETON, ST. LOUIS COUNTY, MO

DESIGNED BY: AMR
APPROVED BY: DRF

BRIDGETON LANDFILL, LLC
 13570 ST. CHARLES ROCK ROAD
 BRIDGETON, MISSOURI 63044

ENGINEERING FOR A BETTER WORLD
FEEZOR ENGINEERING, INC.
 3377 Halberberg Dr. Bridgeton, MO 63044, Ph: 217-483-3118
 Missouri State Certificate Of Authority #: E-200912213

DRAWING TITLE: 2021 Q1 SITE INFRASTRUCTURE

PROJECT NUMBER: BT-130211 FILE PATH: C:\Users\amr\Desktop\Project\Bridgeton\2021Q1\2021Q1_Site_Infrastructure\2021Q1_Site_Infrastructure.dwg

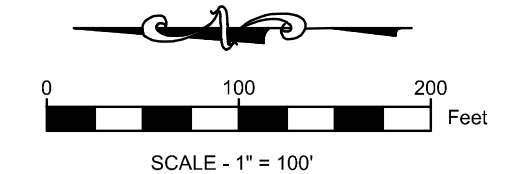
DRAWING #: 003

REVISIONS: DATE DSN APV



LEGEND

- GMP-4
- PZ-204-AS
- GEW-38
- ▲ ITS1
- SEW-63
- PEW-20
- CT-1
- CT-2
- LS-1
- ▲ PS-15
- ▲ LCS-20
- SC-81
- TMP-9
- GC-3
- FT-1
- FT-2
- FT-3
- FT-4
- FT-5
- FT-6
- FT-7
- FT-8
- FT-9
- FT-10
- FT-11
- FT-12
- FT-13
- FT-14
- FT-15
- FT-16
- FT-17
- FT-18
- FT-19
- FT-20
- FT-21
- FT-22
- FT-23
- FT-24
- FT-25
- FT-26
- FT-27
- FT-28
- FT-29
- FT-30
- FT-31
- FT-32
- FT-33
- FT-34
- FT-35
- FT-36
- FT-37
- FT-38
- FT-39
- FT-40
- FT-41
- FT-42
- FT-43
- FT-44
- FT-45
- FT-46
- FT-47
- FT-48
- FT-49
- FT-50
- FT-51
- FT-52
- FT-53
- FT-54
- FT-55
- FT-56
- FT-57
- FT-58
- FT-59
- FT-60
- FT-61
- FT-62
- FT-63
- FT-64
- FT-65
- FT-66
- FT-67
- FT-68
- FT-69
- FT-70
- FT-71
- FT-72
- FT-73
- FT-74
- FT-75
- FT-76
- FT-77
- FT-78
- FT-79
- FT-80
- FT-81
- FT-82
- FT-83
- FT-84
- FT-85
- FT-86
- FT-87
- FT-88
- FT-89
- FT-90
- FT-91
- FT-92
- FT-93
- FT-94
- FT-95
- FT-96
- FT-97
- FT-98
- FT-99
- FT-100



NOTES:
 AERIAL TOPOGRAPHY AND PHOTOGRAPHY PROVIDED BY COOPER AERIAL SURVEYS CO. AND IS DATED DECEMBER 9, 2020.

DISCLAIMER:
 THE EXISTENCE AND APPROXIMATE LOCATION OF UTILITIES KNOWN TO EXIST, AS SHOWN ON THESE DRAWINGS ARE BASED ON THE BEST INFORMATION PROVIDED TO FEI AT THE TIME OF THIS SUBMITTAL. THIS INFORMATION HAS BEEN PROVIDED TO FEI AS-IS AND FEI EXPRESSLY DISCLAIMS ANY REPRESENTATION OR WARRANTY AS TO THE COMPLETENESS OR ACCURACY OF THE INFORMATION FOR ANY USE. IT IS THE RESPONSIBILITY OF ANY PARTIES PERFORMING WORK TO VERIFY THE EXISTENCE, LOCATION AND STATUS OF ANY FACILITY. SUCH VERIFICATION INCLUDES DIRECT CONTACT WITH THE LISTED UTILITIES.

STATE OF MISSOURI
 DANIEL RICHARD FEEZOR
 PROFESSIONAL ENGINEER

FEZZOR ENGINEERING, INC.
 3377 Hollenberg Dr. Bridgeton, MO 63044 Ph: 217-483-3118
 Missouri State Certificate Of Authority # E-200912213

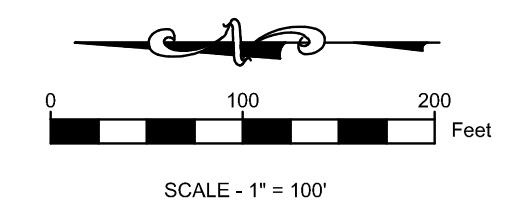
PROJECT	BRIDGETON LANDFILL 2021 Q1 INFRASTRUCTURE SUBMITTAL BRIDGETON, ST. LOUIS COUNTY, MO	PREPARED FOR	BRIDGETON LANDFILL, LLC 13570 ST. CHARLES ROCK ROAD BRIDGETON, MISSOURI 63044
DRAWING TITLE	2021 Q1 SITE INFRASTRUCTURE (UPDATES IN Q1 SHOWN IN COLOR)		
DESIGNED BY:	AMR	APPROVED BY:	DRF
DATE		DSN	APV

APRIL 2021
 DRAWING # **004**



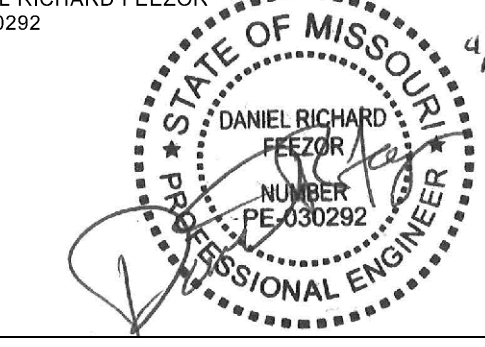
LEGEND

○ GMP-4	SOLID WASTE BOUNDARY
● PE-204-AS	GAS MONITORING PROBE
● GEW-28	PIEZOMETER MONITORING WELL
▲ ITS1	GAS EXTRACTION WELL
● SEW-63	INTERCEPTOR TRENCH SUMP
● PEW-20	SURFACE EXTRACTION WELL
●	PERIMETER GAS EXTRACTION WELL
✂	LFG ISOLATION VALVE
✂	LEACHATE ISOLATION VALVE
○	FLOW METER
○	GRIT CHAMBER
○	LIFT STATION
○	CONDENSATE SUMP
○	CONDENSATE TRAP/HEADER CONNECTION SUMP
●	LEACHATE COLLECTION SUMP
●	HORIZONTAL COLLECTION SUMP
▲	PERIMETER SUMP
▲	LEACHATE COLLECTION SUMP
▲	SURFACE COLLECTOR
○	TEMPERATURE MONITORING PROBE
○	SUBSURFACE RCP WELLS
●	TRENCH SUMP
●	INTERCEPTION TRENCH RISER
●	PERIMETER LEACHATE SUMP
●	WELL HEAD RISER
●	WELL BORE BOOT
■	TRENCH SUMP
○	OVER LINER TIE IN POINT
○	GAS INTERCEPTOR WELL
○	GAS INTERCEPTOR WELL/HEAT EXTRACTION POINT
○	CLEAN OUT
○	GAS EXTRACTION WELL WITH 4" STINGER
○	EXTRACTION POINT - ABANDONED
○	EXTRACTION POINT - TEMPORARILY DECOMMISSIONED
○	CONTAINMENT SUMP PUMP STATION FOR TOE STRIP DRAIN
○	DOWNSLOPE STRIP DRAIN COLLECTOR 6" RISER STUB
○	QUADRANT #
○	POWER PANEL
○	THERMOCOUPLE
○	QUARRY WALL
—	LEACHATE COLLECTION PIPING
—	DUAL CONTAINED LFG FORCEMAIN (SIZE VARIES)
—	DUAL CONTAINED PERIMETER FORCEMAIN (SIZE VARIES)
—	LEACHATE COLLECTION PIPING (SIZE VARIES)
—	TOE DRAIN
—	4" PERFORATED TRENCH DRAIN
—	BUBBLE SUCKER
—	AIR LINE (PRESSURIZED BELOW GROUND)
—	BURIED LFG COLLECTION PIPING (SIZE VARIES)
—	2" ABOVE GROUND LFG COLLECTION LATERAL PIPING
—	4" ABOVE GROUND LFG COLLECTION LATERAL PIPING
—	6" ABOVE GROUND LFG COLLECTION LATERAL PIPING
—	8" ABOVE GROUND LFG COLLECTION LATERAL PIPING
—	10" ABOVE GROUND LFG COLLECTION LATERAL PIPING
—	12" ABOVE GROUND LFG COLLECTION LATERAL PIPING
—	18" ABOVE GROUND LFG COLLECTION LATERAL PIPING
—	24" ABOVE GROUND LFG COLLECTION LATERAL PIPING
—	2" PRESSURIZED AIR / 2" FORCEMAIN IN COMMON TRENCH
—	ABOVEGROUND ELECTRIC LINE
—	UNDERGROUND ELECTRIC LINE
—	SANITARY SEWER
—	MSD DISCHARGE FORCEMAIN
—	WATERMAIN
—	NATURAL GAS LINE
—	PROPANE GAS LINE
—	FIBER OPTIC LINE
—	TELEPHONE
—	FENCE LINE
—	INTERCEPTOR TRENCH
—	HEAT EXTRACTION EFFLUENT PIPING
—	HEAT EXTRACTION INFLUENT PIPING



NOTES:
 * AERIAL TOPOGRAPHY AND PHOTOGRAPHY PROVIDED BY COOPER AERIAL SURVEYS CO. AND IS DATED DECEMBER 9, 2020.
 DANIEL RICHARD FEEZOR PE-030292 PREPARED BY

DISCLAIMER:
 THE EXISTENCE AND APPROXIMATE LOCATION OF UTILITIES KNOWN TO EXIST, AS SHOWN ON THESE DRAWINGS ARE BASED ON THE BEST INFORMATION PROVIDED TO FEI AT THE TIME OF THIS SUBMITTAL. THIS INFORMATION HAS BEEN PROVIDED TO FEI AS-IS AND FEI EXPRESSLY DISCLAIMS ANY REPRESENTATION OR WARRANTY AS TO THE COMPLETENESS OR ACCURACY OF THE INFORMATION FOR ANY USE. IT IS THE RESPONSIBILITY OF ANY PARTIES PERFORMING WORK TO VERIFY THE EXISTENCE, LOCATION AND STATUS OF ANY FACILITY. SUCH VERIFICATION INCLUDES DIRECT CONTACT WITH THE LISTED UTILITIES.



PROJECT	BRIDGETON LANDFILL 2021 Q1 INFRASTRUCTURE SUBMITTAL BRIDGETON, ST. LOUIS COUNTY, MO	PREPARED FOR	BRIDGETON LANDFILL, LLC 13570 ST. CHARLES ROCK ROAD BRIDGETON, MISSOURI 63044	DESIGNED BY: AMR	APRIL 2021	DRAWING #	005
DRAWING TITLE	2021 Q1 SITE INFRASTRUCTURE (REMOVED IN Q1 SHOWN IN RED)			APPROVED BY: DRF		DATE	
PROJECT NUMBER: BT-130-21	FILE PATH: C:\Users\drf\OneDrive\Fezor Engineering\2021\01\Quality Information\2021-Q1-01	REVISIONS:		DATE		DSN	