

---

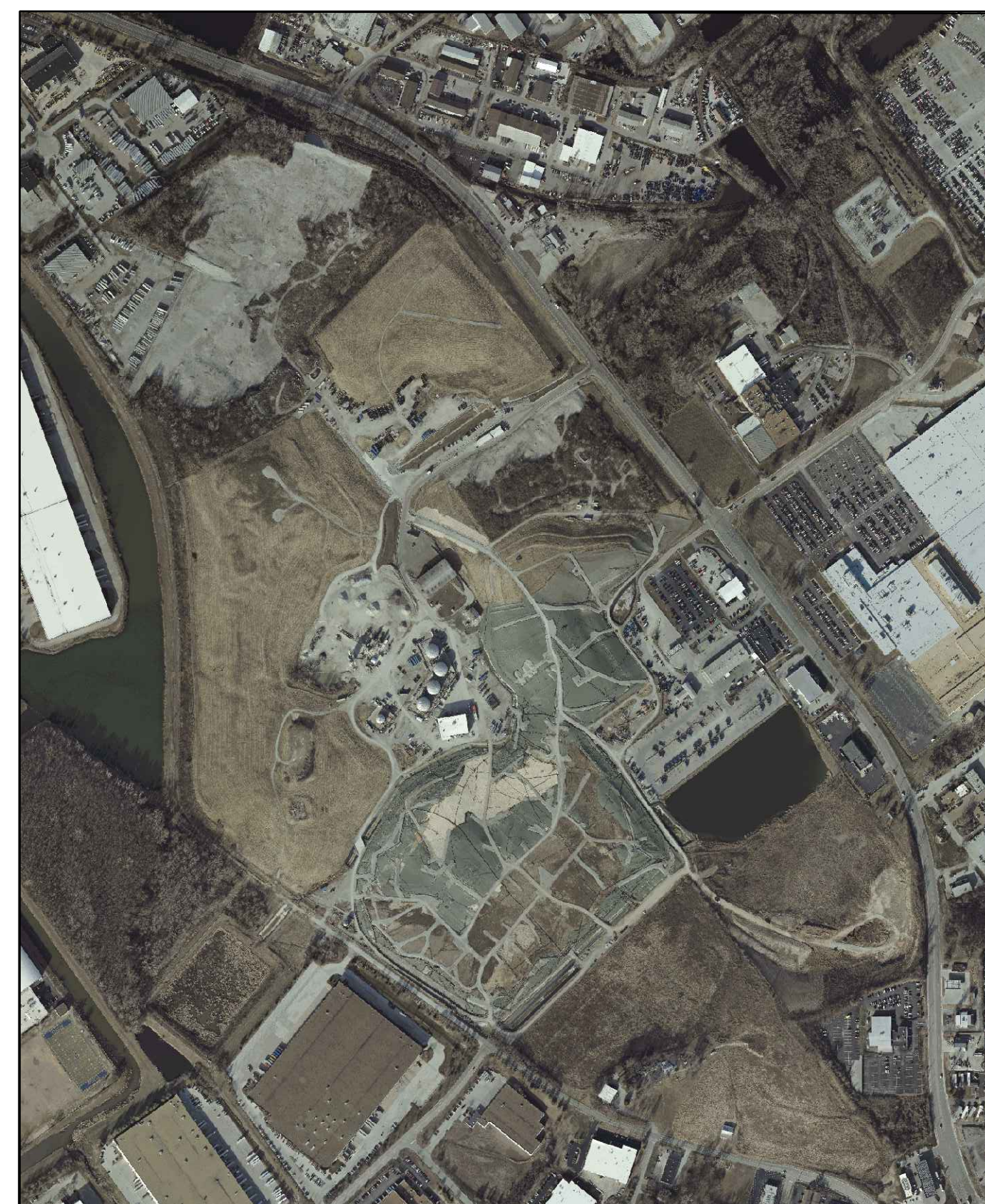
# BRIDGETON LANDFILL

# 2020 Q3 INFRASTRUCTURE UPDATE

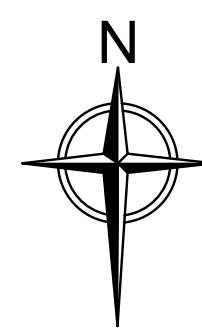
---

OCTOBER 2020  
PREPARED FOR:

**BRIDGETON LANDFILL, LLC**  
13570 ST. CHARLES ROCK ROAD  
BRIDGETON, MISSOURI 63044



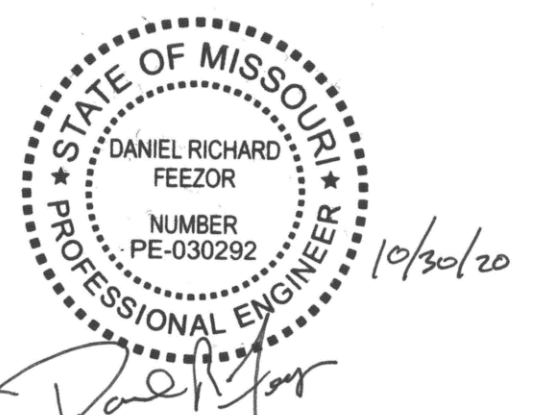
LOCATION MAP



3377 HOLLENBERG DRIVE  
BRIDGETON, MO 63044  
TEL. (217) 483-3118

## INDEX OF DRAWINGS

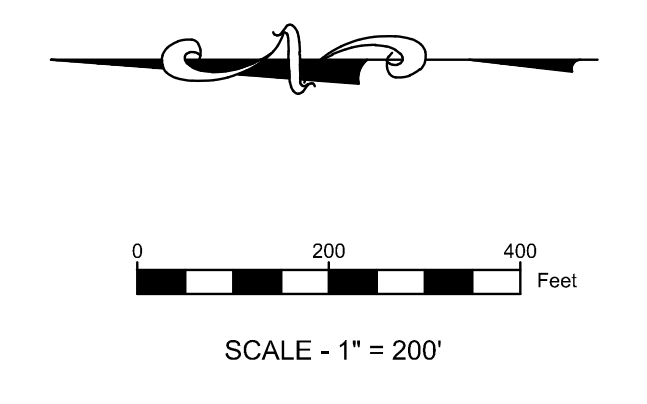
	TITLE PAGE
001	FULL SITE PLAN VIEW W/ AERIAL
001A	FULL SITE PLAN VIEW W/ AERIAL - ALTERNATE VIEW
002	FULL SITE PLAN VIEW
003	2020 Q3 SITE INFRASTRUCTURE PLAN
004	2020 Q3 SITE INFRASTRUCTURE - UPDATES IN Q3 SHOWN IN COLOR
005	2020 Q3 SITE INFRASTRUCTURE - REMOVED IN Q3 SHOWN IN COLOR





**LEGEND**

	SOLID WASTE BOUNDARY
	QUARRY WALL
	FENCE LINE
	GAS MONITORING PROBE
	PIEZOMETER MONITORING WELL



**NOTES:**  
 AERIAL TOPOGRAPHY AND PHOTOGRAPHY PROVIDED BY COOPER AERIAL SURVEYS CO. AND IS DATED DECEMBER 10, 2019.

**DISCLAIMER:**  
 THE EXISTENCE AND APPROXIMATE LOCATION OF UTILITIES KNOWN TO EXIST, AS SHOWN ON THESE DRAWINGS ARE BASED ON THE BEST INFORMATION PROVIDED TO FEI AT THE TIME OF THIS SUBMITTAL. THIS INFORMATION HAS BEEN PROVIDED TO FEI "AS-IS" AND FEI EXPRESSLY DISCLAIMS ANY REPRESENTATION OR WARRANTY AS TO THE COMPLETENESS OR ACCURACY OF THE INFORMATION FOR ANY USE. IT IS THE RESPONSIBILITY OF ANY PARTIES PERFORMING WORK TO VERIFY THE EXISTENCE, LOCATION AND STATUS OF ANY FACILITY. SUCH VERIFICATION INCLUDES DIRECT CONTACT WITH THE LISTED UTILITIES.

PREPARED BY: DANIEL RICHARD FEEZOR PE-030292	PROJECT: BRIDGETON LANDFILL 2020 Q3 INFRASTRUCTURE SUBMITTAL BRIDGETON, ST. LOUIS COUNTY, MO	PREPARED FOR: BRIDGETON LANDFILL, LLC 13570 ST. CHARLES ROCK ROAD BRIDGETON, MISSOURI 63044	DRAWING # <b>001</b>
		DRAWING TITLE: <b>FULL SITE PLAN VIEW W/ AERIAL</b>	OCTOBER 2020 DESIGNED BY: AMR APPROVED BY: DRF
REVISIONS:			DATE    DSN    APV.

3377 Hallenberg Dr. Bridgeton, MO 63044    Ph: 217-483-3118  
 Missouri State Certificate Of Authority #: E-200912213    PROJECT NUMBER: BT-130-20    FILE PATH: C:\Users\amr\Desktop\Feezor\Drawings\2020Q3\2020Q3Infrastructure\001\01 - 000.dwg



**LEGEND**

	SOLID WASTE BOUNDARY
	QUARRY WALL
	FENCE LINE
	GAS MONITORING PROBE
	PIEZOMETER MONITORING WELL

**NOTES:**  
 \* AERIAL TOPOGRAPHY AND PHOTOGRAPHY PROVIDED BY COOPER AERIAL SURVEYS CO. AND IS DATED DECEMBER 10, 2019.

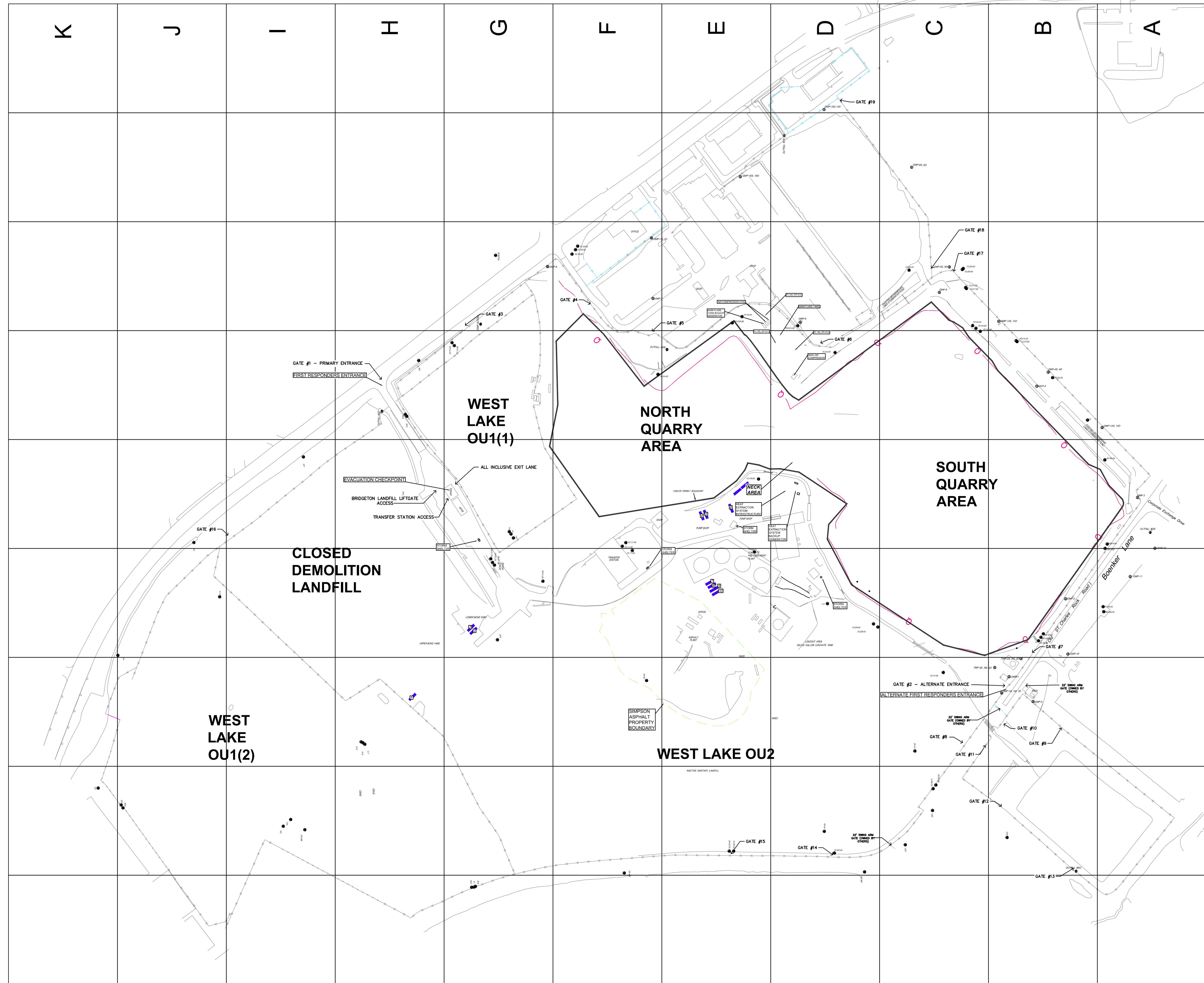
**DISCLAIMER:**  
 THE EXISTENCE AND APPROXIMATE LOCATION OF UTILITIES KNOWN TO EXIST, AS SHOWN ON THESE DRAWINGS ARE BASED ON THE BEST INFORMATION PROVIDED TO FEI AT THE TIME OF THIS SUBMITTAL. THIS INFORMATION HAS BEEN PROVIDED TO FEI "AS-IS" AND FEI EXPRESSLY DISCLAIMS ANY REPRESENTATION OR WARRANTY AS TO THE COMPLETENESS OR ACCURACY OF THE INFORMATION FOR ANY USE. IT IS THE RESPONSIBILITY OF ANY PARTIES PERFORMING WORK TO VERIFY THE EXISTENCE, LOCATION AND STATUS OF ANY FACILITY. SUCH VERIFICATION INCLUDES DIRECT CONTACT WITH THE LISTED UTILITIES.

PREPARED BY: DANIEL RICHARD FEEZOR PE-030292	PROJECT: BRIDGETON LANDFILL 2020 Q3 INFRASTRUCTURE SUBMITTAL BRIDGETON, ST. LOUIS COUNTY, MO	PREPARED FOR: BRIDGETON LANDFILL, LLC 13570 ST. CHARLES ROCK ROAD BRIDGETON, MISSOURI 63044	DRAWING TITLE: <b>FULL SITE PLAN VIEW W/ AERIAL</b>	OCTOBER 2020 DESIGNED BY: AMR APPROVED BY: DRF	DRAWING # <b>001A</b>
REVISIONS:				DATE	DSN
REVISIONS:				DATE	APV

STATE OF MISSOURI PROFESSIONAL ENGINEER  
 DANIEL RICHARD FEEZOR  
 LICENSE NUMBER PE-030292

**FEEZOR ENGINEERING, INC.**  
 Engineering for a Better World  
 3377 Halberberg Dr. Bridgeton, MO 63044 Ph: 217-483-3118  
 Missouri State Certificate Of Authority #: E-200912213

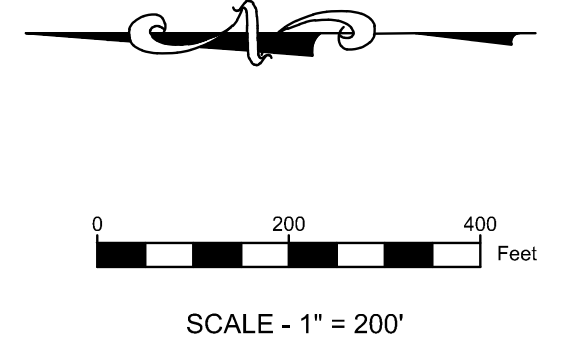
PROJECT NUMBER: BT-130-20 | FILE PATH: C:\Users\amr\Desktop\Bridgeton Landfill\2020 Q3 Infrastructure\2020 Q3 Infrastructure\001A-01.dwg



**LEGEND**

	SOLID WASTE BOUNDARY
	QUARRY WALL
	FENCE LINE
	GAS MONITORING PROBE
	PIEZOMETER MONITORING WELL

9  
8  
7  
6  
5  
4  
3  
2  
1



**NOTES:**  
 \* AERIAL TOPOGRAPHY AND PHOTOGRAPHY PROVIDED BY COOPER AERIAL SURVEYS CO. AND IS DATED DECEMBER 10, 2019.

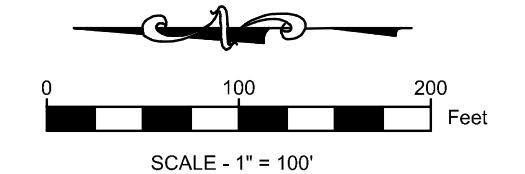
**DISCLAIMER:**  
 THE EXISTENCE AND APPROXIMATE LOCATION OF UTILITIES KNOWN TO EXIST, AS SHOWN ON THESE DRAWINGS ARE BASED ON THE BEST INFORMATION PROVIDED TO FEI AT THE TIME OF THIS SUBMITTAL. THIS INFORMATION HAS BEEN PROVIDED TO FEI "AS-IS" AND FEI EXPRESSLY DISCLAIMS ANY REPRESENTATION OR WARRANTY AS TO THE COMPLETENESS OR ACCURACY OF THE INFORMATION FOR ANY USE. IT IS THE RESPONSIBILITY OF ANY PARTIES PERFORMING WORK TO VERIFY THE EXISTENCE, LOCATION AND STATUS OF ANY FACILITY. SUCH VERIFICATION INCLUDES DIRECT CONTACT WITH THE LISTED UTILITIES.

PREPARED BY: DANIEL RICHARD FEZOR PE-030292	PROJECT: BRIDGETON LANDFILL 2020 Q3 INFRASTRUCTURE SUBMITTAL BRIDGETON, ST. LOUIS COUNTY, MO	PREPARED FOR: BRIDGETON LANDFILL, LLC 13570 ST. CHARLES ROCK ROAD BRIDGETON, MISSOURI 63044	DRAWING # <b>002</b>
		DRAWING TITLE: <b>FULL SITE PLAN VIEW</b>	OCTOBER 2020 DESIGNED BY: AMR APPROVED BY: DRF
PROJECT NUMBER: BT-130-20   FILE PATH: C:\Users\amr\Desktop\Drawings\2020\2020Q3\Bridgeton\2020Q3\002\002.dwg			REVISIONS:





LEGEND	
	SOLID WASTE BOUNDARY
	GAS MONITORING PROBE
	PIEZOMETER MONITORING WELL
	GAS EXTRACTION WELL
	INTERCEPTOR TRENCH SUMP
	SURFACE EXTRACTION WELL
	PERIMETER GAS EXTRACTION WELL
	LFG ISOLATION VALVE
	LEACHATE ISOLATION VALVE
	FLOW METER
	GRIT CHAMBER
	LIFT STATION
	CONDENSATE SUMP
	CONDENSATE TRAP/HEADER CONNECTION SUMP
	LEACHATE COLLECTION SUMP
	HORIZONTAL COLLECTION SUMP
	PERIMETER SUMP
	LEACHATE COLLECTION SUMP
	SURFACE COLLECTOR
	TEMPERATURE MONITORING PROBE
	SUBSURFACE RCP WELLS
	TRENCH SUMP
	INTERCEPTION TRENCH RISER
	PERIMETER LEACHATE SUMP
	WELL HEAD RISER
	WELL BORE BOOT
	TRENCH SUMP
	OVER LINER TIE IN POINT
	GAS INTERCEPTOR WELL
	GAS INTERCEPTOR WELL/HEAT EXTRACTION POINT
	CLEAN OUT
	GAS EXTRACTION WELL WITH 4" STINGER
	EXTRACTION POINT - ABANDONED
	EXTRACTION POINT - TEMPORARILY DECOMMISSIONED
	CONTAINMENT SUMP PUMP STATION FOR TOE STRIP DRAIN
	DOWNSLOPE STRIP DRAIN COLLECTOR 6" RISER STUB
	QUADRANT #
	POWER PANEL
	THERMOCOUPLE
	QUARRY WALL
	LEACHATE COLLECTION PIPING
	DUAL CONTAINED LGS FORCEMAIN (SIZE VARIES)
	DUAL CONTAINED PERIMETER FORCEMAIN (SIZE VARIES)
	LEACHATE COLLECTION PIPING (SIZE VARIES)
	TOE DRAIN
	4" PERFORATED TRENCH DRAIN
	BUBBLE SUCKER
	AIR LINE (PRESSURIZED BELOW GROUND)
	BURIED LFG COLLECTION PIPING (SIZE VARIES)
	2" ABOVE GROUND LFG COLLECTION LATERAL PIPING
	4" ABOVE GROUND LFG COLLECTION LATERAL PIPING
	6" ABOVE GROUND LFG COLLECTION LATERAL PIPING
	8" ABOVE GROUND LFG COLLECTION LATERAL PIPING
	10" ABOVE GROUND LFG COLLECTION LATERAL PIPING
	12" ABOVE GROUND LFG COLLECTION LATERAL PIPING
	18" ABOVE GROUND LFG COLLECTION LATERAL PIPING
	24" ABOVE GROUND LFG COLLECTION LATERAL PIPING
	2" PRESSURIZED AIR / 2" FORCEMAIN IN COMMON TRENCH
	ABOVEGROUND ELECTRIC LINE
	UNDERGROUND ELECTRIC LINE
	SANITARY SEWER
	MSD DISCHARGE FORCEMAIN
	WATERMAIN
	NATURAL GAS LINE
	PROPANE GAS LINE
	FIBER OPTIC LINE
	TELEPHONE
	FENCE LINE
	INTERCEPTOR TRENCH
	HEAT EXTRACTION EFFLUENT PIPING
	HEAT EXTRACTION INFLUENT PIPING



**NOTES:**  
 AERIAL TOPOGRAPHY AND PHOTOGRAPHY PROVIDED BY COOPER AERIAL SURVEYS CO. AND IS DATED DECEMBER 10, 2019.

**DISCLAIMER:**  
 THE EXISTENCE AND APPROXIMATE LOCATION OF UTILITIES KNOWN TO EXIST, AS SHOWN ON THESE DRAWINGS ARE BASED ON THE BEST INFORMATION PROVIDED TO FEI AT THE TIME OF THIS SUBMITTAL. THIS INFORMATION HAS BEEN PROVIDED TO FEI "AS-IS" AND FEI EXPRESSLY DISCLAIMS ANY REPRESENTATION OR WARRANTY AS TO THE COMPLETENESS OR ACCURACY OF THE INFORMATION FOR ANY USE. IT IS THE RESPONSIBILITY OF ANY PARTIES PERFORMING WORK TO VERIFY THE EXISTENCE, LOCATION AND STATUS OF ANY FACILITY. SUCH VERIFICATION INCLUDES DIRECT CONTACT WITH THE LISTED UTILITIES.

 PREPARED BY <b>DANIEL RICHARD FEZOR</b> PROFESSIONAL ENGINEER	PROJECT BRIDGETON LANDFILL 2020 Q3 INFRASTRUCTURE SUBMITTAL BRIDGETON, ST. LOUIS COUNTY, MO	PREPARED FOR BRIDGETON LANDFILL, LLC 13570 ST. CHARLES ROCK ROAD BRIDGETON, MISSOURI 63044	OCTOBER 2020 DESIGNED BY: AMR APPROVED BY: DRF <b>004</b>
<b>FEZOR ENGINEERING, INC.</b> 3377 Halberberg Dr. Bridgeton, MO 63044 Ph: 217-483-3118 Missouri State Certificate Of Authority # E-200912213	DRAWING TITLE <b>2020 Q3 SITE INFRASTRUCTURE (UPDATES IN Q3 SHOWN IN COLOR)</b>	REVISIONS:	DATE DSN APV

