

Daily Flare Monitoring Data - Bridgeton Landfill
4/1/2014 - 9/30/2014

Date	Device Flow (scfm)				Total Flow (scfm)
	Candlestick Flare (FL-100)	Candlestick Flare (FL-140)	Candlestick Flare (FL-120)	E. Aux. Candlestick Flare	
4/1/2014	1,391	2,468	2170	898	6,926
4/2/2014	1,624	2,276	2,082	783	6,765
4/3/2014	1,646	2,052	2,443	705	6,847
4/4/2014	1,846	2,171	2,178	693	6,888
4/5/2014	1,875	2,170	2,370	781	7,196
4/6/2014	2,039	2,247	2,191	771	7,249
4/7/2014	1,804	2,114	2,224	927	7,068
4/8/2014	1,777	2,061	2,265	896	6,999
4/9/2014	1,854	2,085	2,216	933	7,088
4/10/2014	1,723	2,079	2,518	890	7,210
4/11/2014	2,011	2,083	1,801	871	6,767
4/12/2014	2,171	2,371	1,626	895	7,063
4/13/2014	2,222	2,358	1,780	880	7,239
4/14/2014	2,220	2,308	1,502	816	6,847
4/15/2014	2,250	2,194	1,531	733	6,709
4/16/2014	2,279	2,157	1,737	624	6,797
4/17/2014	2,260	2,482	1,732	781	7,256
4/18/2014	2,074	2,735	1,625	908	7,342
4/19/2014	2,233	2,773	1,682	856	7,544
4/20/2014	2,286	2,804	1,743	842	7,675
4/21/2014	2,189	2,875	1,801	808	7,672
4/22/2014	2,093	3,292	2,046	848	8,279
4/23/2014	1,996	3,251	2,070	814	8,131
4/24/2014	2,056	2,997	1,652	692	7,398
4/25/2014	2,384	3,324	1,632	699	8,039
4/26/2014	2,388	3,312	1,611	951	8,262
4/27/2014	2,399	3,286	1,612	909	8,206
4/28/2014	2,282	3,178	1,446	944	7,850
4/29/2014	2,088	2,993	1,361	935	7,377
4/30/2014	2,000	3,025	1,639	942	7,606

Daily Flare Monitoring Data - Bridgeton Landfill
4/1/2014 - 9/30/2014

Date	Device Flow (scfm)				Total Flow (scfm)
	Candlestick Flare (FL-100)	Candlestick Flare (FL-140)	Candlestick Flare (FL-120)	E. Aux. Candlestick Flare	
5/1/2014	1,765	2,843	2,017	947	7,572
5/2/2014	1,650	2,812	2,290	905	7,657
5/3/2014	1,903	3,084	2,058	908	7,954
5/4/2014	2,313	3,362	1,503	921	8,099
5/5/2014	2,409	3,480	1,556	831	8,276
5/6/2014	2,265	3,054	1,430	774	7,523
5/7/2014	1,641	3,309	1,943	806	7,699
5/8/2014	1,319	3,075	2,456	836	7,687
5/9/2014	1,314	3,082	2,523	788	7,706
5/10/2014	1,328	3,151	2,523	769	7,771
5/11/2014	1,341	3,150	2,595	767	7,853
5/12/2014	1,358	3,133	2,727	767	7,985
5/13/2014	868	2,371	2,238	707	6,185
5/14/2014	640	2,395	2,289	767	6,091
5/15/2014	1,149	2,578	2,189	792	6,708
5/16/2014	1,306	2,758	2,271	719	7,054
5/17/2014	1,441	2,953	2,305	679	7,377
5/18/2014	1,505	3,009	2,318	833	7,665
5/19/2014	1,473	2,946	2,558	760	7,736
5/20/2014	1,599	2,788	2,404	763	7,555
5/21/2014	1,479	2,772	2,647	763	7,661
5/22/2014	1,359	2,678	3,166	728	7,932
5/23/2014	1,296	2,648	3,226	692	7,861
5/24/2014	1,476	2,590	3,198	599	7,864
5/25/2014	1,338	2,490	3,002	697	7,527
5/26/2014	1,380	2,589	2,999	683	7,650
5/27/2014	1,431	2,939	3,482	659	8,510
5/28/2014	1,415	2,941	3,496	595	8,446
5/29/2014	1,401	2,964	3,567	537	8,469
5/30/2014	1,360	2,976	3,623	436	8,395
5/31/2014	1,360	3,007	3,647	356	8,370

Daily Flare Monitoring Data - Bridgeton Landfill
4/1/2014 - 9/30/2014

Date	Device Flow (scfm)				Total Flow (scfm)
	Candlestick Flare (FL-100)	Candlestick Flare (FL-140)	Candlestick Flare (FL-120)	E. Aux. Candlestick Flare	
6/1/2014	1,647	2,000	3,464	283	7,394
6/2/2014	1,922	3,194	2,700	223	8,038
6/3/2014	2,022	3,265	2,811	160	8,259
6/4/2014	1,936	3,471	2,962	151	8,521
6/5/2014	1,874	3,372	2,847	141	8,234
6/6/2014	1,890	3,400	2,711	317	8,317
6/7/2014	1,686	3,080	2,496	743	8,006
6/8/2014	1,668	3,083	2,462	673	7,886
6/9/2014	1,612	2,987	2,332	634	7,565
6/10/2014	1,636	3,003	2,424	586	7,649
6/11/2014	1,653	3,031	2,492	536	7,711
6/12/2014	1,674	3,069	2,456	538	7,737
6/13/2014	1,487	2,979	2,248	558	7,272
6/14/2014	1,762	3,184	2,590	489	8,025
6/15/2014	1,764	3,176	2,596	503	8,040
6/16/2014	1,880	3,361	2,628	436	8,306
6/17/2014	2,437	2,678	2,919	527	8,561
6/18/2014	2,154	2,853	2,771	642	8,420
6/19/2014	1,938	2,686	2,725	846	8,195
6/20/2014	1,914	2,606	2,800	863	8,182
6/21/2014	1,915	N/A	N/A	830	N/A
6/22/2014	1,886	N/A	N/A	603	N/A
6/23/2014	1,955	2,644	2,818	582	7,998
6/24/2014	1,933	2,603	2,695	742	7,974
6/25/2014	2,102	2,708	3,033	262	8,105
6/26/2014	1,954	2,914	3,540	0	8,408
6/27/2014	1,577	3,471	3,505	0	8,553
6/28/2014	1,971	3,462	3,501	0	8,934
6/29/2014	1,887	3,334	3,390	0	8,611
6/30/2014	2,027	3,360	3,427	0	8,814

Daily Flare Monitoring Data - Bridgeton Landfill
4/1/2014 - 9/30/2014

Date	Device Flow (scfm)				Total Flow (scfm)
	Candlestick Flare (FL-100)	Candlestick Flare (FL-140)	Candlestick Flare (FL-120)	E. Aux. Candlestick Flare	
7/1/2014	1,902	3,662	3,617	0	9,181
7/2/2014	1,599	3,221	3,406	0	8,226
7/3/2014	1,795	3,484	3,538	0	8,816
7/4/2014	1,933	3,611	3,623	0	9,167
7/5/2014	1,537	3,140	3,229	0	7,906
7/6/2014	1,960	3,497	3,527	0	8,985
7/7/2014	2,042	3,552	3,529	0	9,123
7/8/2014	2,083	3,096	3,324	0	8,503
7/9/2014	2,114	3,432	2,898	0	8,444
7/10/2014	2,103	3,474	2,906	0	8,483
7/11/2014	2,292	3,085	2,656	0	8,033
7/12/2014	2,308	3,859	3,229	0	9,396
7/13/2014	2,253	3,818	3,183	0	9,254
7/14/2014	2,059	3,509	3,045	0	8,613
7/15/2014	2,057	3,377	2,998	0	8,432
7/16/2014	2,190	3,743	3,185	0	9,118
7/17/2014	2,232	3,601	3,121	0	8,953
7/18/2014	2,294	3,853	3,303	0	9,450
7/19/2014	2,349	3,525	3,116	0	8,989
7/20/2014	2,375	3,875	3,263	0	9,514
7/21/2014	2,384	3,877	3,317	0	9,578
7/22/2014	2,440	3,913	3,344	0	9,697
7/23/2014	2,290	3,845	3,250	0	9,385
7/24/2014	2,184	3,718	3,167	0	9,069
7/25/2014	2,128	3,659	3,187	0	8,975
7/26/2014	2,094	3,229	2,848	243	8,415
7/27/2014	2,354	3,304	3,180	576	9,414
7/28/2014	1,981	3,377	3,048	222	8,629
7/29/2014	2,103	3,637	3,097	0	8,837
7/30/2014	2,197	3,723	3,081	0	9,001
7/31/2014	2,200	3,663	3,091	0	8,954

Daily Flare Monitoring Data - Bridgeton Landfill
4/1/2014 - 9/30/2014

Date	Device Flow (scfm)				Total Flow (scfm)
	Candlestick Flare (FL-100)	Candlestick Flare (FL-140)	Candlestick Flare (FL-120)	E. Aux. Candlestick Flare	
8/1/2014	2,121	3,620	3,072	0	8,814
8/2/2014	2,135	3,650	3,103	0	8,888
8/3/2014	2,235	3,484	2,952	0	8,671
8/4/2014	2,272	3,806	3,206	0	9,284
8/5/2014	2,241	3,748	3,193	32	9,215
8/6/2014	1,925	3,206	2,744	0	7,875
8/7/2014	2,040	3,496	3,135	0	8,671
8/8/2014	2,128	3,615	3,087	0	8,830
8/9/2014	2,070	3,552	3,039	0	8,661
8/10/2014	2,128	3,652	3,102	0	8,882
8/11/2014	2,153	3,674	3,096	0	8,923
8/12/2014	2,065	3,588	3,098	0	8,751
8/13/2014	2,147	3,691	3,158	0	8,996
8/14/2014	2,240	3,588	3,048	0	8,877
8/15/2014	2,229	3,759	3,152	0	9,140
8/16/2014	2,080	3,589	3,095	0	8,763
8/17/2014	2,081	3,596	3,095	0	8,772
8/18/2014	2,149	3,656	3,221	0	9,026
8/19/2014	2,152	3,699	3,420	0	9,270
8/20/2014	2,107	3,713	3,340	0	9,159
8/21/2014	2,138	3,629	3,319	0	9,086
8/22/2014	2,249	3,814	3,397	0	9,460
8/23/2014	2,359	3,905	3,495	0	9,759
8/24/2014	2,275	3,458	3,256	0	8,988
8/25/2014	2,363	3,936	3,496	0	9,794
8/26/2014	2,094	3,501	3,061	0	8,656
8/27/2014	2,156	3,816	3,325	0	9,297
8/28/2014	2,073	3,863	3,170	0	9,105
8/29/2014	2,012	3,749	3,200	0	8,961
8/30/2014	1,966	3,474	3,437	0	8,877
8/31/2014	2,142	3,640	3,464	0	9,245

Daily Flare Monitoring Data - Bridgeton Landfill
4/1/2014 - 9/30/2014

Date	Device Flow (scfm)				Total Flow (scfm)
	Candlestick Flare (FL-100)	Candlestick Flare (FL-140)	Candlestick Flare (FL-120)	E. Aux. Candlestick Flare	
9/1/2014	1,954	3,154	3,383	0	8,491
9/2/2014	1,670	3,136	3,740	0	8,546
9/3/2014	1,739	3,479	3,630	34	8,882
9/4/2014	2,298	3,381	3,323	0	9,002
9/5/2014	2,320	3,467	3,321	0	9,108
9/6/2014	2,009	3,115	3,271	0	8,395
9/7/2014	2,102	3,212	3,256	0	8,569
9/8/2014	2,080	3,204	3,243	0	8,526
9/9/2014	2,037	3,526	2,960	0	8,523
9/10/2014	1,916	3,721	2,806	0	8,443
9/11/2014	1,799	3,450	2,651	0	7,900
9/12/2014	1,720	3,374	2,725	0	7,819
9/13/2014	1,782	3,477	2,740	0	7,999
9/14/2014	1,877	3,618	2,674	0	8,169
9/15/2014	1,928	3,595	2,654	0	8,176
9/16/2014	1,935	3,576	2,612	0	8,123
9/17/2014	1,927	3,503	2,704	0	8,134
9/18/2014	2,058	3,716	2,741	0	8,515
9/19/2014	2,111	3,769	2,801	0	8,681
9/20/2014	2,259	3,156	3,125	0	8,540
9/21/2014	2,119	2,785	3,156	0	8,060
9/22/2014	2,177	2,978	3,165	0	8,320
9/23/2014	2,210	3,008	3,257	0	8,476
9/24/2014	2,214	2,970	3,152	415	8,752
9/25/2014	2,215	2,981	3,049	721	8,966
9/26/2014	2,375	3,139	3,259	231	9,004
9/27/2014	2,357	3,151	3,341	0	8,850
9/28/2014	2,409	3,164	3,336	0	8,909
9/29/2014	2,244	3,025	3,105	467	8,841
9/30/2014	2,332	3,044	3,235	233	8,844

Inlet Lab Data

Date	CH4	CO2	O2	N2	H2	CO (%)	CO (ppm)
8/29/2012	14	46	5	24	9.6	0.18	1,800
9/25/2012	13	47	5.3	24	10	0.19	1,900
11/1/2012	10	46	5.7	26	10	0.2	2,000
12/4/2012	11	46	5.7	26	10	0.21	2100
1/22/2013	12	47	5.7	25	11	0.2	2000
2/12/2013	11	51	4.9	21	11	0.19	1900
3/5/2013	12	55	3.9	17	13	0.21	2100
4/25/2013	8	32	11	40	8.1	0.12	1200
5/15/2013	11	49	5	20	13	0.19	1900
6/13/2013	9.8	40	7.6	30	10	0.17	1700
7/11/2013	13	47	5.3	22	12	0.18	1800
8/8/2013	12	52	4.3	18	12	0.16	1600
9/18/2013	13	54	3.9	17	11	0.17	1700
10/8/2013	12	50	4.7	20	13	0.18	1800
11/13/2013	8.6	38	8.9	35	9	0.11	1100
12/12/2013	9.1	39	8.6	33	9.6	0.12	1200
1/15/2014	6.4	29	12	45	7.5	0.091	910
2/18/2014	8.3	37	9.5	36	9	0.1	1000
3/12/2014	7.2	36	9.7	36	10	0.11	1100
4/8/2014	8.1	35	10	38	9.1	0.09	900
5/7/2014	9.8	40	8.1	32	9.7	0.1	1000
6/27/2014	11	45	6	25	12	0.11	1100
7/17/2014	10	42	6.7	27	13	0.21	2100
8/14/2014	11	45	5.7	24	13	0.21	2100
9/11/2014	10	44	6.3	26	13		1300

Daily Flare Monitoring Data And Inlet Lab Data

Date	Candlestick Flare FL-100 (Flare Sta 2)								Flare Sta #1 FL-140		Flare Sta #3 FL-120		Total Utility Flare Flow	East Side Flare		Total Flow
	CH4	CO2	O2	Bal.	Press./Vac.	Gas Inlet Temp (°F)	Flow (scfm)	Flare Temp.	Flow (scfm)	Flare Temp.	Flow (scfm)	Flare Temp.	Flow (scfm)	CH4	Flow (scfm)	scfm
8/7/2012	16.9	51.9	3.7	27.5	-46	137	1867						1,867	16.1	1908.74	7597.74
8/8/2012	17.2	52.3	3.7	26.8	-45.8	136	1886						1,886	16.1	1844.12	7646.12
8/9/2012	14.7	50.9	4.6	29.8	-47.3	132	1885						1,885	16.1	1893.58	7496.58
8/10/2012	15.3	50.3	4.1	30.3	-47.2	129	1897						1,897	16.1	1886.41	7565.41
8/11/2012	17.2	52.4	3.2	27.2	-47.4	130	1886						1,886	16.1	1767.43	7250.43
8/12/2012	16.6	61.1	1.3	21	-55	140	1770						1,770	16.4	1756.28	6526.28
8/13/2012	16.3	58	2.3	23.4	-56.1	132	1790						1,790	16.4	1756.06	7216.06
8/14/2012	17	56.4	2.3	24.3	-56	132	1800						1,800	16.4	1769.94	7419.94
8/15/2012	19.6	59.5	0.8	20.1	-55.3	142	1771						1,771	16.4	1794.08	7017.08
8/16/2012	17.6	57.9	1.6	22.9	-56	132	1766						1,766	16.4	1723.35	7583.35
8/17/2012	16.3	56.4	2	25.3	-55.9	132	1738						1,738	16.4	1738.9	7440.9
8/18/2012	16.9	56.5	2.2	24.4	-54.1	135	1791						1,791	16.4	1909.41	7596.41
8/19/2012	19.6	57.8	1.2	21.4	-55.7	132	1753						1,753	19	1765.22	7198.22
8/20/2012	18.8	57.2	1.7	22.3	-55.6	134	1731						1,731	19	1721.19	7202.19
8/21/2012	16.8	54.4	2.6	26.2	-55.5	133	1773						1,773	19	1338.2	6930.2
8/22/2012	17.6	57.1	1.7	23.6	-54.8	130	1835						1,835	19	1831.58	7313.58
8/23/2012	17.5	56.5	1.6	24.4	-57.6	130	1869						1,869	19	1849	7572
8/24/2012	16.3	56.8	2.5	24.4	-61.1	136	1976						1,976	19	1960.46	7958.46
8/25/2012	17.3	54.8	2.5	25.4	-61	135	1967						1,967	19	1986.47	7908.47
8/26/2012	17.7	55.9	2.6	23.8	-61.3	132	2009						2,009	15.7	2015.86	7949.86
8/27/2012	15.9	54.3	2.5	27.3	-61.1	130	1960						1,960	15.7	1959.93	7830.93
8/28/2012	15.5	57.4	2.6	24.5	-60.6	130	1993						1,993	15.7	2006.21	7996.21
8/29/2012	15.9	56.6	3	24.5	-68.9	130	2208						2,208	15.7	2201.02	8310.02
8/30/2012	14.4	54.5	3.7	27.4	-70.1	128	2192						2,192	15.7	2181.25	8275.25
8/31/2012	14.2	53.8	3.9	28.1	-71.1	128	2169						2,169	15.7	2189.22	8432.22
9/1/2012	15.2	54	3.6	27.2	-71	124	2209						2,209	15.7	2162	8422
9/2/2012	15.8	54.1	3.7	26.4	-71.6	120	2159						2,159	14.7	2148.79	8291.79
9/3/2012	14.4	57.1	3.2	25.3	-70.2	130	2144						2,144	14.7	2143.36	8437.36
9/4/2012	14.9	57	3.2	24.9	-70.4	126	2156						2,156	14.7	2142.8	8390.8
9/5/2012	15.3	56	3.3	25.4	-71	124	2174						2,174	14.7	2164.14	8313.14
9/6/2012	14.1	55.2	3.6	27.1	-70.4	127	2144						2,144	14.7	2050.95	8372.95
9/7/2012	16.8	58.9	1.8	22.5	-69.1	134	2170						2,170	14.7	2194.05	8721.05
9/8/2012	14.2	54	4	27.8	-70.7	122	2192						2,192	14.7	2167.82	8310.82
9/9/2012	14	54.1	3.8	28.1	-70.7	126	2178						2,178	14.4	2152.45	8465.45
9/10/2012	14.3	53.6	3.9	28.2	-70.9	125	2154						2,154	14.4	2158.12	8454.12
9/11/2012	14.1	54	3.8	28.1	-71.1	121	2203						2,203	14.4	2183.63	8385.63
9/12/2012	14.1	53.7	3.8	28.1	-71	122	2175						2,175	14.4	2191.26	8522.26
9/13/2012	14.6	54.8	3.4	27.2	-69.5	120	2199						2,199	14.4	2193.66	8031.66
9/14/2012	13.6	51.9	4.4	30.1	-68.7	116	2194						2,194	14.4	2123.39	7970.39
9/15/2012	15.8	59.4	1.9	22.9	-64.4	108	2093						2,093	14.4	1598.87	8341.87
9/16/2012	15.2	56.8	2.9	25.1	-61.4	120	1980						1,980	14.7	1967.65	8054.65
9/17/2012	14.6	54.6	3.8	27	-61.4	120	1934						1,934	14.7	1921.85	8305.85
9/18/2012	13.1	52.6	4.8	29.5	-61.5	116	2003						2,003	14.7	1930.82	8529.82
9/19/2012	14.8	56.9	3.3	25	-59.6	126	1902						1,902	14.7	1883.6	8220.6
9/20/2012	13.9	55.2	3.8	27.1	-59.8	120	1859						1,859	14.7	2033.2	8526.2
9/21/2012	14.2	55.7	3.7	26.4	-64.1	120	2139						2,139	14.7	2135.42	8277.42
9/22/2012	14.2	53.4	4	28.4	-63.8	128	2133						2,133	14.7	2164.57	8073.57
9/23/2012	16.1	54.8	2.5	26.6	-62.7	128	2167						2,167	14.9	2177.31	7916.31
9/24/2012	15.8	61.9	1.3	21	-37	124	1316						1,316	14.9	2020.9	8122.9
9/25/2012	14.8	57.5	3.1	24.6	-65.8	118	2217						2,217	14.9	2140.01	9108.01
9/26/2012	15.1	58.6	2.4	23.9	-66.2	120	2158						2,158	14.9	2116.01	8727.01
9/27/2012	13.2	54.3	4.2	28.3	-67.8	116	2194						2,194	14.9	2080.27	8579.27
9/28/2012	14.1	56.3	3.5	26.1	-66.2	118	2314						2,314	14.9	2424.34	7656.34
9/29/2012	15.6	59.8	1.8	22.8	-63.9	133	2306						2,306	14.9	2311.98	8817.98
9/30/2012	16.6	60	1.7	21.7	-63.7	130	2313						2,313	16	2216.35	8389.35
10/1/2012	16	61	2	21	-62.8	120	2212						2,212	16	1921	8636
10/2/2012	15.1	60	2.6	22.3	-62.1	120	2242						2,242	16	2222.46	8437.46
10/3/2012	14.4	49.6	4.5	31.5	-47.4	128	1930						1,930	16	1983.86	11096.86
10/4/2012	14.8	54.8	3.8	26.6	-35	120	1890						1,890	16	1919.07	9161.07
10/5/2012	17.7	61.6	1.7	19	-38.2	126	1836						1,836	16	2115.56	9623.56
10/6/2012	16.2	58.6	2.7	22.5	-37.7	126	1729						1,729	16	1704.82	9004.82
10/7/2012	16.6	60.8	1.8	20.8	-35.6	128	1719						1,719	16.4	1733.19	9611.19
10/8/2012	16.6	59.5	2.3	21.6	-36.4	128	1625						1,625	16.4	1681.9	9034.9
10/9/2012	15	59.1	2.8	23.1	-32	130	1715						1,715	16.4	1605.28	8739.28
10/10/2012	14.1	53	4.4	28.5	-44.6	116	1516						1,516	16.4	1431.37	7274.37
10/11/2012	15	55.9	3.4	25.7	-45.1	118	1397						1,397	16.4	1366	7710
10/12/2012	13.7	52.4	4.5	29.4	-43	120	1324						1,324	16.4	1449.14	8120.14
10/13/2012	15.3	54.8	3.4	26.5	-55.2	120	1856						1,856	16.4	1911.41	8779.41
10/14/2012	15.6	57.3	2.9	24.2	-60.6	118	2102						2,102	14.4	2067.13	8208.13
10/15/2012	14.2	53.5	3.6	28.7	-62.9	122	1975						1,975	14.4	1959.57	8534.57
10/16/2012	14.4	52.8	3.5	29.3	-60.3	128	2040						2,040	14.4	2048.91	8928.91

Date	Candlestick Flare FL-100 (Flare Sta 2)								Flare Sta #1 FL-140		Flare Sta #3 FL-120		Total Utility Flare Flow	East Side Flare		Total Flow
	CH4	CO2	O2	Bal.	Press./Vac.	Gas Inlet Temp (°F)	Flow (scfm)	Flare Temp.	Flow (scfm)	Flare Temp.	Flow (scfm)	Flare Temp.	Flow (scfm)	CH4	Flow (scfm)	scfm
10/17/2012	14	55.8	3.1	27.1	-66.6	122	1885	1308					1,885	14.4	1875.03	8978.03
10/18/2012	15.3	59.9	1.9	22.9	-67.6	120	1892	1160					1,892	14.4	1876.69	6925.69
10/19/2012	14	53	3.8	29.2	-67.5	110	1855	1352					1,855	14.4	1909.05	7559.05
10/20/2012	13.7	53.4	3.3	29.6	-65.8	122	1785	1227					1,785	14.4	1769.5	8514.5
10/21/2012	13.7	54.5	3.2	28.6	-59.3	125	1990	1268					1,990	14.7	1919.8	7069.8
10/22/2012	14.8	61.1	2.1	22	-64	121	1337	1119					1,337	14.7	1447.46	5813.46
10/23/2012	15.3	61.2	2.1	21.4	-62.8	120	1436	1238					1,436	14.7	1439.4	8387.4
10/24/2012	14.7	61.6	1.7	22	-60.1	125	1310	1225					1,310	14.7	1568.55	6563.55
10/25/2012	15	58.7	2.5	23.8	-45.2	130	1623	1238					1,623	14.7	1617.17	8977.17
10/26/2012	13.6	53.4	4.4	28.6	-40.5	114	1334	1305					1,334	14.7	1479.7	7925.7
10/27/2012	14.7	51	3.5	30.8	-50.9	121	1645	1330					1,645	14.7	1518	7563
10/28/2012	15.6	54.9	2.9	26.6	-53.6	118	1472	1275					1,472	14	1411.67	7330.67
10/29/2012	13.5	56	2.8	27.7	-47.3	115	1270	1270					1,270	14	1405.88	7575.88
10/30/2012	13.9	54.3	4	27.8	-44.2	113	1460	1362					1,460	14	1498.67	8150.67
10/31/2012	12.5	52.5	4.9	30.1	-38.6	115	1261	1345					1,261	14	1201.8	6996.8
11/1/2012	12.6	51.7	4.6	31.1	-35.9	102	1071	1060					1,071	14	1090.56	6706.56
11/2/2012	13.3	51.1	4.4	31.2	-38.8	100	1050	985					1,050	14	1094.39	6764.39
11/3/2012	13.6	53.4	3.9	29.1	-47.7	118	988	1290					988	14	1046.67	6867.67
11/4/2012	13.8	54.7	3.4	28.1	-48.2	123	1188	1172					1,188	13.2	1017.51	7161.51
11/5/2012	13.3	52.5	4.3	29.9	-47.1	110	1147	1243					1,147	13.2	1097.54	6621.54
11/6/2012	12.5	52.4	4.1	31	-37.1	110	1040	1113					1,040	13.2	979.62	6624.62
11/7/2012	11.3	49.8	5.5	33.4	-38.4	110	1200	1289					1,200	13.2	1263.49	6953.49
11/8/2012	11.8	52.3	5.7	30.2	-44.5	110	1456	1371					1,456	13.2	1294.14	7548.14
11/9/2012	11.7	51.3	5.6	31.4	-46.5	114	1547	1336					1,547	13.2	1280.36	7635.36
11/10/2012	11.8	48.5	5.6	34.1	-56.6	113	1732	1328					1,732	13.2	1315.82	7862.82
11/11/2012	11.5	48	5.9	34.6	-50.4	113	1483	1195					1,483	13.1	1265.42	7684.42
11/12/2012	10.7	48.7	5.8	34.8	-51.3	101	1484	1369					1,484	13.1	1272.72	7006.72
11/13/2012	14.6	63	1.8	20.6	-29	120	1601	1228					1,601	13.1	1143.56	7227.56
11/14/2012	11.4	45.5	6.9	36.2	-51.7	110	1526	1097					1,526	13.1	1141.75	6724.75
11/15/2012	13.5	54.1	3.8	28.6	-47.4	114	1576	1173					1,576	13.1	1121.96	6870.96
11/16/2012	12.9	54.6	4.1	28.5	-48.2	116	1669	1113					1,669	13.1	1123.28	6679.28
11/17/2012	13.2	53.9	4.2	28.7	-49.3	112	1735	1107					1,735	13.1	1142.38	6815.38
11/18/2012	12.6	55.8	3.9	27.8	-48.3	118	1747	1128					1,747	12.9	1183.66	6895.66
11/19/2012	13.3	56.7	4.1	25.9	-47.6	114	1705	1166					1,705	12.9	1211.95	6924.95
11/20/2012	13.1	54	4.7	28.2	-46.3	112	1701	1111					1,701	12.9	1170.78	7097.78
11/21/2012	12.8	52.4	4.6	30.2	-55.7	110	1685	1133					1,685	12.9	1180.24	7385.24
11/22/2012	13.3	54.9	3.8	28	-49.5	112	1762	1244					1,762	12.9	1262.76	7275.76
11/23/2012	12.6	55.6	4.7	27.1	-53.9	108	1655	1214					1,655	12.9	1192.78	6748.78
11/24/2012	12.6	52.3	4.8	30.3	-52.3	103	1512	1342					1,512	12.9	1261.76	6836.76
11/25/2012	13.9	60.5	2.9	22.7	-47.3	108	1312	1316					1,312	13.8	1212.51	6512.51
11/26/2012	14.3	54.4	3.8	27.5	-47.1	109	1289	1209					1,289	13.8	1233.18	6139.18
11/27/2012	13.6	54	4.2	28.2	-38.1	106	1134	1065					1,134	13.8	1028.61	6020.61
11/28/2012	13.9	60.4	3.1	22.6	-41.4	110	1185	1076					1,185	13.8	1140.08	5999.08
11/29/2012	13.1	53.6	4.6	28.7	-39.8	110	1153	1150					1,153	13.8	1257.68	6600.68
11/30/2012	13.1	52.8	4.2	29.9	-42.1	110	1240	1181					1,240	13.8	1199.64	6699.64
12/1/2012	13	57.3	4.1	25.6	-42.7	114	1307	1360					1,307	13.8	1307.9	6984.9
12/2/2012	13.1	54.1	4.2	28.6	-43.5	116	1323	1257					1,323	13.9	1280.65	7068.65
12/3/2012	13.2	55	4	27.8	-45.2	116	1409	1274					1,409	13.9	1288.83	7124.83
12/4/2012	12.1	55.6	4.6	27.7	-44.3	110	1478	1254					1,478	13.9	1250.89	6864.89
12/5/2012	12.1	52.1	4.8	31	-43.1	109	1425	1157					1,425	13.9	1206.54	6672.54
12/6/2012	12.5	55	4.8	27.7	-46.2	109	1118	1162					1,118	13.9	1117.08	7028.08
12/7/2012	12.8	51.3	4.6	31.3	-48.3	112	1230	1095					1,230	13.9	1021.82	7131.82
12/8/2012	12	49.2	5.4	33.4	-48	108	1220	1238					1,220	13.9	1158.85	7078.85
12/9/2012	13.1	51.8	4.5	30.6	-45.9	110	1075	1115					1,075	13.9	1162.03	7297.03
12/10/2012	15.1	47.7	5.6	31.6	-42.2	84	1308	1350					1,308	13.9	1316.92	6723.92
12/11/2012	17.1	51.9	4.1	26.9	-51.2	86	1289	1337					1,289	13.9	1493.74	6269.74
12/12/2012	14.5	54.5	4.8	26.2	-45.4	105	1440	1200					1,440	13.9	1706.4	8625.4
12/13/2012	14.5	46.8	6.5	32.2	-52.7	100	1644	1388					1,644	13.9	1696.61	7403.61
12/14/2012	17.3	50.2	4.4	28.1	-42.1	110	1620	1393					1,620	13.9	1592.65	6846.65
12/15/2012	14.5	46	5.8	33.7	-47.7	112	1607	1273					1,607	13.9	1453.88	6985.88
12/16/2012	14.3	50.5	5.2	30	-44.7	124	1451	1149					1,451	13.9	1561.4	6874.4
12/17/2012	13.5	49.1	5.7	31.7	-47	95	1612	1326					1,612	13.9	1652.88	7061.88
12/18/2012	13	48.2	6.1	32.7	-47.8	90	1597	1390					1,597	13.9	1745.62	6855.62
12/19/2012	15.1	47.2	5.3	32.4	-45.8	100	1782	1372					1,782	13.9	1622.55	7239.55
12/20/2012	15.1	57.6	3.9	23.4	-44	98	1602	1074					1,602	13.9	1503.98	7099.98
12/21/2012	12.1	45.4	6.3	36.2	-43.2	75	1551	1226					1,551	13.9	1592.09	7008.09
12/22/2012	13.6	54.4	5.1	26.9	-43.5	90	1550	1145					1,550	13.9	1929.84	7395.84
12/23/2012	14.1	51	4.7	30.2	-47.8	99	1969	1227					1,969	13.8	1999.6	7779.6
12/24/2012	13.8	51.2	5.2	29.8	-47.7	90	2059	1131					2,059	13.8	1890.03	7521.03
12/25/2012	14.2	51.6	4.2	30	-46.3	95	1895	1242					1,895	13.8	1797.74	7206.74
12/26/2012	15	58.4	3.7	22.9	-46.1	91	1956	1231					1,956	13.8	1635.39	6954.39
12/27/2012	15	53.2	3.8	28	-45.3	102	1662	1137					1,662	13.8	1565.15	6957.15
12/28/2012	15.3	55.1	3.7	25.9	-44.9	105	1543	1246					1,543	13.8	1619.54	6926.54
12/29/2012	14.6	54.9	4.1	26.4	-45.1	98	1664	1066					1,664	13.8	1505.65	7004.65

Date	Candlestick Flare FL-100 (Flare Sta 2)								Flare Sta #1 FL-140		Flare Sta #3 FL-120		Total Utility Flare Flow	East Side Flare		Total Flow
	CH4	CO2	O2	Bal.	Press./Vac.	Gas Inlet Temp (°F)	Flow (scfm)	Flare Temp.	Flow (scfm)	Flare Temp.	Flow (scfm)	Flare Temp.	Flow (scfm)	CH4	Flow (scfm)	scfm
12/30/2012	14	54.3	4	27.7	-44.3	109	1523	1067					1,523	14.5	1421.63	6897.63
12/31/2012	15.1	52.7	4.3	27.9	-43.3	110	1442	1119					1,442	14.5	1464.39	7111.39
1/1/2013	14.1	54.7	4.7	26.5	-42.8	102	1418	1188					1,418	0		5251
1/2/2013	14.8	51.4	4.9	28.9	-43	106	1378	1077					1,378	0		5329
1/3/2013	15.9	52	4.2	27.9	-39	102	1468	1302					1,468	0		5578
1/4/2013	16.1	47.9	5.3	30.7	-39	104	1393	1163					1,393	0		5109
1/5/2013	16.5	48	5.5	30	-39.1	92	1321	1353					1,321	0		5089
1/6/2013	16.3	49	5.4	29.3	-39.4	92	1358	1321					1,358	0		4852
1/7/2013	16.2	53.3	4.4	26.1	-38.1	90	1265	1347					1,265	0	1210.959259	5970.959259
1/8/2013	16.4	52.7	4.1	26.8	-38.6	92	1247	1167					1,247	0	1246.603472	5912.603472
1/9/2013	14.4	55.3	4.1	26.2	-37.2	100	1203	1071					1,203	0	1234.339583	6429.339583
1/10/2013	15.8	53.3	4.6	26.3	-37.2	100	1243	1321					1,243	0	1301.010965	6971.010965
1/11/2013							1302	968					1,302	0		4713
1/12/2013													0	0		4388
1/13/2013							1221	1036					1,221	0	1473.770774	6935.770774
1/14/2013	16.2	51.5	4.5	27.8	-29.1	90	1394	1318					1,394	0	1433.536607	5731.536607
1/15/2013	17.5	57.2	3.3	22	-26.7	102	1401	1223					1,401	0	1421.910417	6067.910417
1/16/2013	17.4	53.8	3.7	25.1	-26.3	94	1316	1302					1,316	0	1388.153472	5826.153472
1/17/2013	16.8	51.7	4.3	27.2	-21.4	80	1514	1280					1,514	0	1484.151389	10800.151389
1/18/2013	19	58.1	2.5	20.4	-21.2	105	1413	1136					1,413	0	1389.422272	5584.422272
1/19/2013													0	0		4064
1/20/2013													0	0		1888
1/21/2013	14.1	52.4	4.8	28.7	-27.4	76	1411	1089					1,411	0	1282	3445
1/22/2013							1894	1028					1,894	0		9289
1/23/2013							730	1575					730	0		4330
1/24/2013	11.7	53	5.3	30	79.5	82	1271	894					1,271	0		4677
1/25/2013							3900	826					3,900	0		7369
1/26/2013							3901	896					3,901	0		7401
1/27/2013							3901	894					3,901	0		7243
1/28/2013							3900	1028					3,900	0		7714
1/29/2013	12.5	60.2	3.1	24	111.6	105	1074	1152					1,074	0		1771
1/30/2013	14.2	55.7	3.9	26.2	74.4	103	806	1049					806	0		4365
1/31/2013	14.3	58.8	3.2	23.7	49.3	80	820	902					820	0		5140
2/1/2013	14.2	61.3	2.4	22.1	74.9	90	1452	974					1,452	0		5424
2/2/2013	13.6	58.7	3.6	24.1	25.1	81	1483	1014					1,483	0		5734
2/3/2013	12.7	56.4	4.2	26.7	40.2	80	868	1151					868	0		5878
2/4/2013	14	61.5	2.7	21.8	46.2	100	814	958					814	0		6622
2/5/2013	14.3	58.8	3.2	23.7	49.3	80	820	902					820	0		6000
2/6/2013	12.8	55.2	4.6	27.4	75.1	110	981	800					981	0		6658
2/7/2013							1089	836					1,089	0		6203
2/8/2013	12	57.1	4.5	26.4	57.8	80	832	1053					832	0		5597
2/9/2013	12.5	55.8	4.5	27.2	83.5	90	994	857					994	0		6154
2/10/2013	13.2	60.6	2.6	23.6	89.6	90	1080	1265					1,080	0		6009
2/11/2013	14.2	56.7	4.6	24.5	72.7	100	920	1023					920	0		6540
2/12/2013	11.9	55.8	4.5	27.8	64.5	90	950	695					950	0		6140
2/13/2013	12.3	57.4	4	26.3	78	92	965	860					965	0		6021
2/14/2013							1035	977					1,035	0		5968
2/15/2013							941	1123					941	0		5895
2/16/2013	12.3	56.2	3.5	28	70.1	72	1026	966					1,026	0		5679
2/17/2013	12.9	57.6	3	26.5	83.5	90	1090	1144					1,090	0		5898
2/18/2013	14.6	60.1	2.7	22.6	68.3	100	1060	1130					1,060	0		6317
2/19/2013	13	56.8	4.2	26	61.8	70	950	1217					950	0		5633
2/20/2013	13	57.6	3.7	25.7	59.1	60	951	813					951	0		5369
2/21/2013	13.1	62.8	3.5	20.6	65	60	1021	863					1,021	0		5548
2/22/2013	13.3	62	3.7	21	70.4	80	1150	1088					1,150	0		5813
2/23/2013	13.6	62.7	3.3	20.4	71.4	85	1011	891					1,011	0		5496
2/24/2013	13.4	62.5	2.8	21.3	85.4	105	1015	1088					1,015	0		5828
2/25/2013	13	60.5	2.6	23.9	87.2	100	1080	1159					1,080	0		5717
2/26/2013	14.1	63.5	2.1	20.3	59.5	75	935	889					935	0		5626
2/27/2013	15	59.3	3.1	22.6	40.4	60	818	1226					818	0		4433
2/28/2013	13.3	60.1	3.4	23.2	57.7	72	908	1218					908	0		4995
3/1/2013	14.3	66.1	1.9	17.7	55.8	70	848	952					848	0		4966
3/2/2013	14.9	64.3	2.2	18.6	60.4	70	906	1098					906	0		5401
3/3/2013	13	61	3	23	78.7	100	874	708					874	0		5764
3/4/2013	13.3	66.6	2.6	17.5	78.6	100	913	1247					913	0		5937
3/5/2013	13.6	65.6	3.2	17.6	72.1	80	976	1231					976	0		5998
3/6/2013	12.9	62.4	3.9	20.8	74.8	90	1012	1149					1,012	0		5709
3/7/2013	13.6	64.6	2.6	19.2	74.2	110	879	974					879	0		5761
3/8/2013	13.1	63.3	3	20.6	81.9	100	957	1080					957	0		5863
3/9/2013	15.3	64.9	1.5	18.3	74.2	100	915	1266					915	0		6015
3/10/2013	14.2	65.5	2.1	18.2	76.2	80	1073	1015					1,073	0		6065
3/11/2013	13.2	60.2	4	22.6	50.7	90	1178	1165					1,178	0		6339
3/12/2013	12.9	54	3.6	29.5	65.5	90	1202	1088					1,202	0		6508
3/13/2013	11.7	51.6	4.8	31.9	79.1	90	1332	1097					1,332	0		6412

Date	Candlestick Flare FL-100 (Flare Sta 2)								Flare Sta #1 FL-140		Flare Sta #3 FL-120		Total Utility Flare Flow	East Side Flare		Total Flow
	CH4	CO2	O2	Bal.	Press./Vac.	Gas Inlet Temp (°F)	Flow (scfm)	Flare Temp.	Flow (scfm)	Flare Temp.	Flow (scfm)	Flare Temp.	Flow (scfm)	CH4	Flow (scfm)	scfm
3/14/2013	13.7	58.3	2.5	25.5	32	85	768	1174					768	0		5932
3/15/2013	13.1	60.5	2.7	23.7	73	120	1284	943					1,284	0		6842
3/16/2013	14.2	56.9	2.7	26.2	75.8	100	1381	1008					1,381	0		6091
3/17/2013	13.1	53.7	3.7	29.5	66.7	90	1842	985					1,842	0		6368
3/18/2013	12.8	57.9	3.6	25.7	70.1	90	2009	1219					2,009	0		6496
3/19/2013	16	49.5	5.4	29.1	83.3	90	1578	1125					1,578	0		6137
3/20/2013	14.9	52	4.7	28.4	53.9	80	1167	1268					1,167	0		6301
3/21/2013	12.2	59.2	1.8	26.8	48	80	1383	789					1,383	0		5569
3/22/2013	11.5	54.7	4	29.8	77.2	100	1339	830					1,339	0		6219
3/23/2013	13.4	71.8	2.3	12.5	45.6	95	1247	1068					1,247	0		7066
3/24/2013							1099	1191					1,099	0		6216
3/25/2013	12.2	60.8	3.8	23.2	44.5	70	1177	1138					1,177	0		6288
3/26/2013	12.1	52.9	4.5	30.5	53.5	90	1112	1075					1,112	0		6610
3/27/2013	13.9	56.8	3.2	26.1	55.5	100	1167	791					1,167	0		6604
3/28/2013	11	55.2	4.5	29.3	68.7	100	1322	977					1,322	0		6873
3/29/2013	12.1	57.8	3.7	26.4	62.7	120	1898	885					1,898	0		7246
3/30/2013	13.4	57.4	2.8	26.4	102	90	1238	1125					1,238	0		6562
3/31/2013	13.4	60.8	2.3	23.5	72.2	110	1970	945					1,970	0		6837
4/1/2013	11.9	54	4.9	29.2	39.6	100	1994	1066					1,994	0		7033
4/2/2013	11.8	53	4.4	30.8	44.5	90	1655	780					1,655	0		6746
4/3/2013	12.5	53.3	4.7	29.5	55.4	90	1728	1001					1,728	0		7112
4/4/2013	13.5	55.9	3.8	26.8	58	120	2008	930					2,008	0		7501
4/5/2013	13.1	57.1	3.4	26.4	60.5	120	2196	800					2,196	0		7231
4/6/2013	15	59.6	2	23.4	61.6	124	1889	1266					1,889	0		6641
4/7/2013													0			
4/8/2013	11.4	58.4	4.6	25.6	54.1	130	1877	1034					1,877	0		7153
4/9/2013	13.9	58.8	2.5	24.8	58.3	110	2156	1305					2,156	0		7006
4/10/2013	12.9	58.6	3	25.5	55	110	1279	969					1,279	0		5894
4/11/2013	14.7	57.1	2.8	25.4	29.1	90	1335	1093					1,335	0		5615
4/12/2013	13.6	57	3.5	25.9	66.3	90	1441	1223					1,441	0		5503
4/13/2013	13.6	56	3.3	27.1	56.2	106	1259	944					1,259	0		6107
4/14/2013	12.9	57.3	3.4	26.4	50	120	2558	1239					2,558	0		6544
4/15/2013	14	58	3.1	24.9	63.9	100	2135	809					2,135	0		6014
4/16/2013	13.3	56.2	4	26.5	58.2	80	2005	952					2,005	0		5351
4/17/2013	14.8	55.1	3.5	26.6	56.8	104	2413	827					2,413	0		5756
4/18/2013	14.6	55.1	4.4	25.9	38.4	75	1808	1256					1,808	0		5954
4/19/2013	13.5	52.6	4.7	29.2	36.8	76	2032	1119					2,032	0		6331
4/20/2013	12.9	55	3.9	28.2	36.8	90	1753	992					1,753	0		6329
4/21/2013	13.2	54.1	3.7	29	38.3	90	1773	1090					1,773	0		6496
4/22/2013	12.9	63.9	3.2	20	41.2	106	2011	963					2,011	0		7205
4/23/2013	13.7	56.5	3.4	26.4	53.1	90	1660	901					1,660	0		6462
4/24/2013	12.3	53.4	4.5	29.8	55.4	88	1675	1099					1,675	0		6334
4/25/2013	12.3	51.9	4.7	31.1	58.2	92	1687	968					1,687	0		6286
4/26/2013	9.9	48.5	6.3	35.3	63.4	92	1620	1128					1,620	0		6042
4/27/2013	11.5	55.2	3.7	29.6	47.1	88	1029	908					1,029	0		6145
4/28/2013	10.8	55.2	4.1	29.9	47.7	87	1345	985					1,345	0		6588
4/29/2013	12.5	51.4	4.1	32	45.6	102	1982	928					1,982	0		7050
4/30/2013	13.3	58.7	2.7	25.3	49.5	110	2124	1225					2,124	0		7278
5/1/2013	12.3	59.6	2	26.1	44	118	2168	831					2,168	0		7298
5/2/2013	12.8	57.2	3	27	45	106	1752	1110					1,752	0		7014
5/3/2013	13.1	52.8	4.4	29.7	50.4	72	1779	1078					1,779	0		6844
5/4/2013	12.9	54.1	3.8	29.2	52.1	78	1810	850					1,810	0		6996
5/5/2013	13	54.8	3.9	28.3	54.7	80	1707	976					1,707	0		6826
5/6/2013	12.9	56	3.4	27.7	53	96	1730	1124					1,730	0		7059
5/7/2013	13.4	60.7	2.5	23.4	43.9	110	2235	956					2,235	0		7487
5/8/2013	13	58.9	2.9	25.2	51.1	114	2176	458					2,176	0		7476
5/9/2013	13.4	55.4	3.8	27.7	47.6	107	2110	785					2,110	0		7380
5/10/2013	12	54	4.7	29.3	43.4	93	1527	1005					1,527	0		7004
5/11/2013	14	54	5.4	26.6	43.1	96	1642	1154					1,642	0		6996
5/12/2013	11.8	51.4	5	31.8	43.8	89	1900	1100					1,900	0		7349
5/13/2013	12.5	53.6	4.3	29.6	47.5	100	1810	892					1,810	0		7227
5/14/2013	12.7	58.6	3.5	25.2	51.5	108	2121	1097					2,121	0		7627
5/15/2013	13.7	56.1	3.5	26.7	47.1	105	1920	1022					1,920	0		7219
5/16/2013	11.9	56.2	3.8	28.1	44.5	106	2242	704					2,242	0		7520
5/17/2013	12.2	57.1	3.5	27.2	50.9	106	2121	909					2,121	0		7258
5/18/2013	12.2	58.1	3.1	26.6	50.3	126	2141	842					2,141	0		7392
5/19/2013	11.8	58.4	3.7	25.6	44.3	136	2375	962					2,375	0		7614
5/20/2013	12	58	3.2	26.5	50.2	121	1881	1215					1,881	0		6947
5/21/2013	11.6	58.9	3.4	26.1	47	124	2112	1009					2,112	0		7194
5/22/2013	12.3	58.4	3	26.3	46.9	128	2337	1171					2,337	0		7414
5/23/2013	12.2	54.6	4	29.2	47.5	117	2214	1271					2,214	0		7094
5/25/2013	10.6	53.8	5.1	30.5	46.3	124	2007	1047					2,007	0		7170
5/26/2013	10.9	56.3	3.9	28.9	50.2	136	2488	1038					2,488	0		7729
5/27/2013	10.9	52.5	4.8	31.8	48.6	136	2601	894					2,601	0		7814

Date	Candlestick Flare FL-100 (Flare Sta 2)								Flare Sta #1 FL-140		Flare Sta #3 FL-120		Total Utility Flare Flow	East Side Flare		Total Flow
	CH4	CO2	O2	Bal.	Press./Vac.	Gas Inlet Temp (°F)	Flow (scfm)	Flare Temp.	Flow (scfm)	Flare Temp.	Flow (scfm)	Flare Temp.	Flow (scfm)	CH4	Flow (scfm)	scfm
5/28/2013	12	56.3	3.6	28.1	45.4	134	2034	1080					2,034	0		7277
5/29/2013	11.2	57.9	3.9	27	41.7	137	2321	1210					2,321	0		7456
5/30/2013	10.7	53.1	5.1	31.1	40.8	137	2828	1057					2,828	0		7731
5/31/2013	11	53	4.5	30.5	40.3	138	2741	540					2,741	0		7338
6/1/2013	11.3	56.1	3.8	28.2	41.2	124	2873	1220					2,873	0		7501
6/2/2013	10.7	57.6	3.8	27.9	50.3	126	2245	1053					2,245	0		7431
6/3/2013	12.2	60.4	3.1	24.3	57.3	128	2364	959					2,364	0		7609
6/4/2013	12.7	58.7	2.5	26.1	50.1	146	2713	822					2,713	0		7654
6/5/2013	12.8	60.6	1.8	24.8	54.1	153	1922	703					1,922	0	586	7821
6/6/2013	11.6	54.4	4.3	29.7	52.3	145	1918	1139					1,918	0	529	7735
6/7/2013	12.9	49.1	4.6	33.4	54.7	142	1809	997					1,809	0	734	7519
6/8/2013	12.7	58.3	2.4	26.6	48.9	154	2592	780					2,592	0	596	8285
6/9/2013	11.9	54.9	4.3	28.9	56.8	147	2038	1081					2,038	0	864	7835
6/10/2013	11.5	49.1	5.7	33.7	51.3	147	1589	1222					1,589	0	1079	7982
6/11/2013	10.1	47.5	6.6	35.8	53.3	148	1457	908					1,457	0	1028	7730
6/12/2013	11.5	47.5	5.2	35.8	52.6	152	2110	979					2,110	0	1056	8363
6/13/2013	10	43.9	6.5	39.6	54.7	140	1653	963					1,653	0	488	7435
6/14/2013	10.6	47.4	6.5	35.5	63.2	142	1214	912					1,214	0	1119	7511
6/15/2013	11	50.5	5.3	33.2	60.7	146	1269	943					1,269	0	872	7394
6/16/2013	11.9	58.1	3.4	26.6	54.2	148	2105	891					2,105	0	745	7960
6/17/2013	11.6	44.4	6.1	37.9	54.1	102	1664	480					1,664	0	1051	6877
6/18/2013	11.9	54.9	4.9	58.3	58.3	146	1496	981					1,496	0	1141	7643
6/19/2013	13.1	58.8	3.3	24.8	64	145	1004	1017					1,004	0	1409	7691
6/20/2013	12.8	59	2.2	26	64.4	147	1196	1134					1,196	0	1184	7757
6/21/2013	11.6	55.5	3.9	26	63.5	146	1891	1065					1,891	0	1177	8175
6/22/2013	10.5	40.9	7.9	40.7	47.8	97	2301	1392					2,301	0	1380	7545
6/23/2013	9.4	40.5	7.1	43	47.9	156	2987	1353					2,987	0	1293	8089
6/24/2013	12.4	42	6.8	38.8	46.9	144	3046	1254					3,046	0	1443	7986
6/25/2013	10.9	49.6	5.1	34.4	47.1	144	3046	885					3,046	0	1382	8317
6/26/2013	8.9	40.6	6	44.5	47.5	141	2725	513					2,725	0	1391	7919
6/27/2013	12.1	45.5	4.9	37.5	53.5	145	2605	854					2,605	0	1334	7568
6/28/2013	11	53.7	5.5	29.8	56.2	144	2817	791					2,817	0	1326	7996
6/29/2013	11.4	45.2	5.9	37.5	37.5	144	2566	956					2,566	0	1386	7646
6/30/2013	12.2	42.8	6.9	38.1	48.8	149	2911	1250					2,911	0	1432	8037
7/1/2013	11.3	46.9	6.2	35.6	53.7	143	2891	855					2,891	9.7	1271	7456
7/2/2013	9.1	42.5	7	41.4	62	140	2708	1341					2,708	7.5	1514	7531
7/3/2013	12.4	48.3	5.7	33.6	56.9	145	2610	1094					2,610			6120
7/4/2013	10.3	45.5	4.4	39.8	55.8	143	2901	1153					2,901			6397
7/5/2013	12.6	47.4	6.1	33.9	52.9	143	2884	1121					2,884	10.9	1501	7899
7/6/2013	13	47.6	6.2	33.2	51.4	139	2544	926					2,544	10.8	1535	7970
7/7/2013	14.7	50.5	5.1	29.7	39.5	149	2328	635					2,328	8.3	1364	7038
7/8/2013	10.8	50.3	5.1	33.8	33.1	140	2392	1066					2,392	11.9	1580	7768
7/9/2013	10.6	43.2	4.9	41.3	56.9	140	2279	1179					2,279	11.2	1504	7764
7/10/2013	12.6	43.7	6.1	37.6	61.4	129	2004	1360					2,004	9.1	1570	7534
7/11/2013	10.5	30.5	6	31.7	1.3	133	2041	1123					2,041	7.2	1398	7426
7/12/2013	12.9	54.5	4.6	28	35	136	2195	1354					2,195	8.9	1516	7632
7/13/2013	13.3	58.8	2.8	25.1	53.4	147	2701	1227					2,701	12.4	1265	7601
7/14/2013	12.7	51	4	26.3	51.3	90	2188	992					2,188	11.6	1305	6818
7/15/2013	13.4	60.6	3.3	22.7	54.7	92	2027	1092					2,027	12.3	1204	7185
7/16/2013	11.7	54.5	4.5	29.3	63.9	137	1383	938					1,383			5123
7/17/2013	12.3	55.8	4.7	27.2	42.6	92	1416	900					1,416	15.1	1023	9730
7/18/2013	12.5	59.8	2.8	24.9	57.7	147	1066	906					1,066	13.8	1003	9310
7/19/2013	12.1	54.7	4.4	28.8	57.7	147	1142	906					1,142			5129
7/20/2013	12.7	53.1	4.9	29.3	63.4	124	957	835					957	18.7	900	8774
7/21/2013	13	60.3	3.1	23.1	62.3	141	1343	874					1,343	17.3	833	8965
7/22/2013	12.8	54.2	4.8	28.2	56.3	142	1512	866					1,512	14.8	1007	9467
7/23/2013	12.8	52.5	3.5	31.2	65.4	142	1597	753					1,597	13.2	1102	9311
7/24/2013	11.5	44.2	6	33.3	61	134	1609	831					1,609	16.3	1047	9588
7/25/2013	11.9	57.3	4.5	26.3	65.7	145	1551	817					1,551	20.6	805	9586
7/26/2013	11.7	50.6	5.9	31.3	-68.3	136	1612	870					1,612	15.2	936	9631
7/27/2013	12.9	53.7	4.8	28.6	65.6	139	1177	1133					1,177	17.6	759	8826
7/28/2013	13.1	54.2	4.1	28.6	68.1	158	949	1632					949	15	846	8930
7/29/2013	13.4	54.1	4	28.5	66	141	1241	1628					1,241	12.2	894	9471
7/30/2013	13.6	52.3	4.8	29.3	66.5	131	801	1602					801	17.4	939	8705
7/31/2013	13.6	55	4.3	27.1	70	128	1052	1661					1,052	18.1	935	9013
8/1/2013	13.9	56.3	3.3	26.5	68.6	144	1210	1607					1,210	0	962	9344
8/2/2013	13.6	57.2	3.3	25.9	66.8	136	1184	948					1,184	0	1017	9047
8/3/2013	13.7	52.8	4.2	29.3	67.3	140	1218	849					1,218	0	1014	9092
8/4/2013	12.9	53.3	4.2	29.6	68.3	158	1148	747					1,148	0	975	9059
8/5/2013	13.1	54.9	4	28	63.7	141	1138	997					1,138	0	946	9093
8/6/2013	14.8	57	3	25.2	66.5	145	1266	903					1,266	0	928	10186
8/7/2013	15.8	56.2	3.6	24.4	62.6	145	1286	877					1,286	0	1103	10379
8/8/2013	13.9	52.6	4.4	29.1	67.7	139	1381	761					1,381	0	990	10055
8/9/2013	14.6	54.3	3.8	27.3	64.4	140	1158	791					1,158	0	1074	10174

Date	Candlestick Flare FL-100 (Flare Sta 2)								Flare Sta #1 FL-140		Flare Sta #3 FL-120		Total Utility Flare Flow	East Side Flare		Total Flow
	CH4	CO2	O2	Bal.	Press./Vac.	Gas Inlet Temp (°F)	Flow (scfm)	Flare Temp.	Flow (scfm)	Flare Temp.	Flow (scfm)	Flare Temp.	Flow (scfm)	CH4	Flow (scfm)	scfm
8/10/2013	14.8	54.6	4.2	26.4	68.3	142	1348		861				1,348	0	1043	10339
8/11/2013	14.1	53.9	3.9	28.1	65.6	162	1288		767				1,288	0	1122	10354
8/12/2013	14.5	54.7	4.2	26.6	69.7	136	1201		979				1,201	0	1080	10105
8/13/2013	13.4	56.8	4.7	25.1	74	89	1022		889				1,022	0	1061	9747
8/14/2013	13	51.5	5.2	30.3	69.7	83	1101		700				1,101	0	1174	9310
8/15/2013	13.9	55	4	27.1	67.7	137	1172		841				1,172	0	976	9867
8/16/2013	13.3	52.8	4.3	29.6	68.6	135	1141		840				1,141	0	845	9588
8/17/2013	13.6	57.4	3.8	25.2	42.3	133	1190		885				1,190	0	903	9902
8/18/2013	14.4	59.5	3.2	22.9	69.9	132	1318		904				1,318	0	902	10194
8/19/2013	14.2	55.7	4.3	25.8	72.6	133	1111		712				1,111	0	1055	10156
8/20/2013	13.5	55.4	4.6	26.5	69.6	136	1346		667				1,346	0	1043	10180
8/21/2013	13.9	59.1	4.1	22.9	72.8	138	960		799				960	0	1048	9514
8/22/2013	13.6	56.5	4.4	25.5	66.7	136	1372		770				1,372	0	888	9937
8/23/2013	14	58.5	4.3	23.2	66.3	137	1268		617				1,268	0	977	9647
8/24/2013	13.5	55.1	5.9	25.5	60.1	135	1272		790				1,272	0	1083	9597
8/25/2013	12.3	56.2	4.6	26.9	74	136	1335		741				1,335	0	1286	10244
8/26/2013	12.8	54	4.9	28.3	68.8	135	1302		773				1,302	0	1080	9738
8/27/2013	14.4	55.6	4.8	25.2	67.5	135	1263		857				1,263	0	1071	9719
8/28/2013	14	50.7	4.7	30.6	62.1	136	1230		726				1,230	0	1089	9300
8/29/2013	14.7	59.3	2.6	23.4	66.9	143	1277		891				1,277	0	989	10041
8/30/2013	14.7	64.9	3.1	17.3	61.4	149	1071		769				1,071	0	947	9340
8/31/2013	15.5	51.8	4.3	28.4	66.3	137	1093		758				1,093	0	1062	9099
9/1/2013	15.1	56.8	3.5	24.6	59.1	138	1001		715				1,001	0	1252	10258
9/2/2013	15.9	60.5	5	18.6	58.6	131	975		743				975	0	1205	10164
9/3/2013	14	54.1	3.1	28.8	61.1	141	760		675				760	0	1150	9848
9/4/2013	13.1	52.6	3	31.3	51.4	145	615		695				615	0	1211	9570
9/5/2013	12.4	58.6	3	26	58.9	145	572		731				572	0	1130	9591
9/6/2013	11.8	63.9	4.8	19.5	61	138	700		628				700	0	1055	9295
9/7/2013	11.9	54.9	5.6	27.6	56.3	134	737		717				737	0	1092	9528
9/8/2013	12.9	57.3	3.8	26	65.1	137	772		764				772	0	1065	9352
9/9/2013	13.1	57.2	3.5	26.2	60.5	137	713		756				713	0	1098	9747
9/10/2013	13.2	60.1	3.1	23.6	61.8	140	855		700				855	0	1060	9243
9/11/2013	12.8	55.4	4.3	27.5	63.8	138	841		831				841	0	1088	9332
9/12/2013	12.8	53.6	4	29.6	58.6	136	749		969				749	0	1110	9676
9/13/2013	12.6	53.9	4.9	28.4	69.8	134	749		976				749	0	1115	9479
9/14/2013	14.5	60.8	3	21.7	64.7	136	741		979				741	0	1123	9128
9/15/2013					69.7	136	788		952				788	0	1073	9225
9/16/2013	12.7	55	4.8	27.5	70.9	133	749		1087				749	0	1122	8898
9/17/2013	16.7	55.1	4.5	22.7	73.6	131	917		849				917	0	1102	9334
9/18/2013	13.3	54.2	4.7	27.8	71.4	131	801		959				801	0	1082	9312
9/19/2013	13.6	59.5	3.7	23.2	72.3	135	772		932				772	0	1058	9528
9/20/2013	13.2	55.4	3.9	27.5	77.5	128	821		957					0	1135	8768
9/21/2013							855		1109					0	1139	6507
9/22/2013	13.1	54.1	5.2	27.6	33.8	136	705		783					0	1140	7435
9/23/2013	12.9	54.4	4.7	28.8	50.1	132	701		835					0	1122	7061
9/24/2013	11.2	47.2	6.7	34.9	55.8	130	637		1013					0	1485	7861
9/25/2013	11.7	98.7	6.5	33.1	49	131	849		1055					0	1533	6575
9/26/2013	13.3	52.1	5	29.6	0.6	139	1724		942					0	1573	6692
9/27/2013	12.2	53	5.3	29.5	0.7	124	1209		893					0	1453	6155
9/28/2013	11.3	50.5	7.9	30.3	1.3	125	1327		1243					0	1427	5976
9/29/2013	13.3	45.6	7.7	33.9	0.9	125	2833		1142					0	1512	7624
9/30/2013	11.8	49.9	7.2	31.6	1.2	125	1270		1045					0	1471	6009
10/1/2013	12	50.1	6.4	31.5	-35.2	115	1207		1132					0	1379	5855
10/2/2013	12.1	53.5	5.2	29.2	-32.2	116	1025		1072					0	1242	5934
10/3/2013	12.9	51.8	5.8	29.5	-34.9	118	1003		1171					0	1222	5824
10/4/2013	10.9	49.5	6	33.6	-34.6	116	1004		1134					0	1320	5969
10/5/2013	12.7	47.7	6.2	33.4	-34.4	116	980		1084					0	1300	5848
10/6/2013	11.3	45.8	7.2	35.7	-35.8	112	971		1248					0	1296	5601
10/7/2013	12.1	44	7.8	36.1	-36.2	106	1013		1176					0	1101	5613
10/8/2013	10.5	48.8	7.1	33.6	-31.7	104	1081		1173					0	922	5506
10/9/2013	10.5	48.2	7.6	33.7	-29.2	104	1382		1003					0	1048	5772
10/10/2013	12.2	49.9	6.5	31.4	-34.4	114	966		1026					0	901	5146
10/11/2013	11.8	50.7	6	31.5	-33.4	113	900		1119					0	1222	5892
10/12/2013	10.9	44.5	7.4	37.2	-34.7	107	851		1110					0	1046	5562
10/13/2013	10.4	44	7.6	38	-35.1	107	826		898					0	528	5024
10/14/2013	10.3	45.5	8	36.2	-34.9	100	1005		1121					0	594	4994
10/15/2013	11.8	48.1	6.8	33.3	-33.2	110	1030		1253					0	1330	5558
10/16/2013	11.4	47.2	7.6	38.8	-32.5	95	1045		1239					0	1407	5143
10/17/2013	10.4	24	7.1	58.5	-36	101	1005		1204					0	1239	5279
10/18/2013	11	49.2	7.2	32.6	-35.8	95	950		1161					0	1274	5745
10/19/2013	11.2	45.1	7.6	36.1	-35.3	82	960		1125					0	1057	5505
10/20/2013	11.6	49.2	6.9	32.3	-35.9	90	950		1195					0	1444	4910
10/21/2013	11.4	43	7.4	38.2	-35.9	93	850		1084					0	544	5954
10/22/2013	11.7	43.6	6.7	38	-35.8	93	760		1016					0	1066	5326

Date	Candlestick Flare FL-100 (Flare Sta 2)								Flare Sta #1 FL-140		Flare Sta #3 FL-120		Total Utility Flare Flow	East Side Flare		Total Flow
	CH4	CO2	O2	Bal.	Press./Vac.	Gas Inlet Temp (°F)	Flow (scfm)	Flare Temp.	Flow (scfm)	Flare Temp.	Flow (scfm)	Flare Temp.	Flow (scfm)	CH4	Flow (scfm)	scfm
10/23/2013	11.7	43.1	7	38.2	-36	78	900	1150	1700	1050	900	1190	3,500	0	1120	4620
10/24/2013	10	40.1	8.6	41.3	-35.9	82	900	900	1720	1010	1850	883	4,470	0	952	5422
10/25/2013	11.4	45.8	7.2	35.6	-36.2	90	946	1072	1758	1057	1888	904	4,592	0	1114	5706
10/26/2013	11.5	44.5	7.2	36.8	-35.5	80	949	1175	1884	1347	1150	829	3,983	0	1092	5075
10/27/2013	12.5	49.7	5.6	32.2	-34.7	90	1007	1174	1735	1301	1702	853	4,444	0	1092	5536
10/28/2013	12.4	48.4	6.1	33.1	-35.4	97	834	1078	1822	1047	1669	870	4,325	0	1087	5412
10/29/2013	11.9	48.5	5.9	33.7	-35.5	92	1004	1141	1722	1217	1865	885	4,591	0	854	5445
10/30/2013	12.1	49.1	5.9	32.9	-30.6	98	927	1155	1861	1193	1473	846	4,261	0	984	5245
10/31/2013	11.7	48.5	6.1	33.7	-35	100	970	1195	1741	1228	1941	1016	4,652	0	998	5650
11/1/2013	10.9	42.8	7.6	38.7	-35.8	84	947	1194	1629	1225	1922	955	4,498	0	948	5446
11/2/2013	10.8	42	7.6	39.6	-35.6	85	964	1224	1642	1094	1890	1184	4,496	0	971	5467
11/3/2013	11.3	42.7	7.4	38.6	-36.1	80	959	1204	1627	1283	1942	934	4,528	0	846	5374
11/4/2013	10.7	40.5	7.9	40.9	-36.2	82	848	1177	1731	1280	1780	990	4,359	0	1170	5529
11/5/2013	12.8	44.4	7.5	35.3	-35.9	80	860	1040	1784	1205	1826	886	4,470	0	1171	5641
11/6/2013	10.9	48.2	6.3	34.6	-35.9	87	1440	1206	2110	1205	1987	1142	5,537	0	770	6307
11/7/2013	10.2	48.7	6.9	34.2	-35.9	88	979	1222	1666	1271	1886	899	4,531	0	797	5328
11/8/2013	11.5	48.6	6.6	33.3	-35.8	90	1337	1111	1764	1188	1808	899	4,909	0	662	5571
11/9/2013	11.5	44.8	7.6	36.1	-35.9	88	753	1184	1734	1387	1879	1035	4,366	0	1239	5605
11/10/2013	9.5	41.2	8.5	40.8	-35.8	91	751	1091	1724	1277	1861	901	4,336	0	1218	5554
11/11/2013	10.7	43.5	7.9	37.9	-35.9	93	732	1120	1787	1222	1850	922	4,369	0	1206	5575
11/12/2013	9.3	37.9	9.5	43.3	-35.9	82	731	1079	1567	1232	1756	981	4,054	0	1224	5278
11/13/2013	10	39.1	8.6	42.3	-36.4	77	820	1045	1471	1069	1406	858	3,697	0	1214	4911
11/14/2013	10.3	41.5	8.7	39.5	-35.9	77	870	1131	1637	1207	1712	942	4,219	0	1201	5420
11/15/2013	10.1	42.7	8.1	34.1	-36.4	87	750	1154	1889	1343	1535	910	4,174	0	1097	5271
11/16/2013	10.6	43.9	7.5	38	-21.4	84	931	1258	1941	1074	1761	1084	4,633	0	1031	5664
11/17/2013	13.4	45.1	7.1	34.4	-20.7	93	933	1252	1967	963	1842	1105	4,742	0	1021	5763
11/18/2013	9.5	42	8.3	40.2	-30.4	90	800	1243	1995	1377	1342	798	4,137	0	1074	5211
11/19/2013	10	41.8	7.8	40.4	-33.6	98	1110	1235	1660	1255	1930	951	4,700	0	1054	5754
11/20/2013	10.1	40.2	8.6	41.1	-32.1	86	1040	1320	1670	1230	1580	983	4,290	0	1030	5320
11/21/2013	10.4	45.5	7.6	36.5	-30.6	88	1170	1240	1750	1200	1680	915	4,600	0	830	5430
11/22/2013	9.7	44.1	7.9	38.3	-30.1	80	1103	1224	1684	1309	1532	983	4,319	0	766	5085
11/23/2013	8.6	39.6	9.2	42.6	-32.1	76	1088	1277	1634	1332	1559	900	4,281	0	1083	5364
11/24/2013	7.6	32.5	12.4	47.5	-28.6	71	1017	1250	1522	1140	1587	882	4,126	0	1068	5194
11/25/2013	9.5	38.1	9.8	42.6	-31.4	70	1046	1260	1677	1174	1618	907	4,341	0	1057	5398
11/26/2013	9.4	38.7	9.6	42.3	-30.5	71	706	1019	1256	1129	2460	1231	4,422	0	1024	5446
11/27/2013	8.5	33.4	10.6	47.5	-34.8	57	784	947	1420	1337	2328	1120	4,532	0	1029	5561
11/28/2013	9.4	37.5	9.8	43.3	-34.4	54	660	1023	1601	1405	2423	1014	4,684	0	934	5618
11/29/2013	9.6	38.3	9.4	42.7	-33.7	51	550	1165	1561	1181	2465	1194	4,576	0	943	5519
11/30/2013	10.1	42.9	10.5	36.5	-34.5	62	665	1064	1614	1289	2389	1252	4,668	0	1069	5737
12/1/2013	10.1	43.8	7.9	38.2	-33.3	58	1030	964	1730	1284	1125	893	3,885	0	918	4803
12/2/2013	10.7	46	7.1	36.2	-34.2	67	872	1130	1422	1048	2437	1013	4,511	0	888	5399
12/3/2013	9.9	43.7	7.7	38.7	-35.7	67	991	1254	1857	1389	1433	881	4,281	0	812	5093
12/4/2013	11.1	44.3	7.3	37.3	-40	73	1022	1268	1170	1254	2425	1034	4,617	0	772	5389
12/5/2013	11.3	46.3	7	35.4	-39.8	73	862	1116	1052	1091	2549	1133	4,463	0	771	5234
12/6/2013	8.3	37.6	13.9	40.2	-39.4	78	901	1145	1306	1214	2518	1274	4,725	0	775	5500
12/7/2013					-40	75	1175	1175	1765	1315	1980	1126	4,920	0		4920
12/8/2013	9.4	42.6	9.7	38.3	-40	79	857	1140	1283	1306	2627	1055	4,767	0	938	5705
12/9/2013	8.1	43.1	11.2	37.6	-39	74	1025	1257	1478	1163	2025	1241	4,528	0	933	5461
12/10/2013	9.2	42	9.3	38.3	-37.8	71	978	1205	1568	1173	1833	1029	4,379	0	1023	5402
12/11/2013	8	40.9	11.3	39.8	-38.8	74	829	1173	1422	1274	2460	930	4,711	0	949	5660
12/12/2013	9.5	48.7	9.7	32.1	-39.5	71	883	1180	1265	1252	2602	1127	4,750	0	908	5658
12/13/2013	9.3	44.7	9.7	36.3	-39.4	71	894	1111	1301	1182	2707	984	4,902	0	841	5743
12/14/2013	11.2	46.2	6.6	35.5	-39.9	76	1206	1285	1291	945	2084	1098	4,581	0	821	5402
12/15/2013	11.1	42.3	8.7	37.4	-40.2	66	1040	1238	1262	1205	2364	1196	4,666	0	1168	5834
12/16/2013	10.1	41.2	8	40.7	-38.9	74	1474	1312	1227	907	1888	1109	4,589	0	916	5505
12/17/2013	9.8	39.8	9.4	41	-38.5	74	1126	1203	1174	1183	2427	1127	4,727	0	868	5595
12/18/2013	10	37	10.4	42.6	-40.8	76	994	1157	1703	1346	2099	1069	4,796	0	1099	5895
12/19/2013	9.7	41.8	9.1	39.4	-43.4	73	1727	1197	1938	1236	852	1085	4,517	0	977	5494
12/20/2013	14.3	42.5	8.9	34.3	-44.5	68	1880	1335	1560	1296	2522	1156	5,962	0	988	6950
12/21/2013	10.2	40	8.4	40.4	-43.3	69	1968	1344	1088	1200	2541	1045	5,597	0	1061	6658
12/22/2013	10.5	42.2	8.2	39.1	-43.6	70	1610	1287	1298	1225	2420	1174	5,328	0	960	6288
12/23/2013	7.9	31.3	11.5	49.3	-43.8	67	1116	1236	1662	1213	2553	1375	5,331	0	871	6202
12/24/2013	8.4	34.6	10.2	46.8	-42.6	63	1721	1302	1932	1304	2153	1135	5,806	0	808	6614
12/25/2013	9.5	39.8	9.2	41.5	-44.4	65	1063	1305	1604	1228	1725	1217	4,392	0	808	5200
12/26/2013	8.2	40.7	8.1	43	-43	70	2025	1297	1691	1350	1453	892	5,169	0	835	6004
12/27/2013	10.7	42.9	8.8	37.6	-43.4	69	1228	1054	1261	1291	2149	1097	4,638	0	851	5489
12/28/2013	13.3	40.9	9.1	36.7	-44.6	72	2029	1331	1362	1290	2203	958	5,594	0	968	6562
12/29/2013	16.9	41.4	8.9	32.8	-44.5	74	1755	1146	1425	1341	2302	1136	5,482	0	919	6401
12/30/2013	10.4	39.7	8.8	41.1	-44.4	48	2025	1250	1350	1216	2350	1058	5,725	0	950	6675
12/31/2013	8.8	35.9	10.1	45.2	-44.9	43	2100	503	1300	1324	2156	1146	5,556	0	932	6488
1/1/2014	9	37.3	9.7	44	-44.8	49	1850	1290	2467	950	1270	1216	5,587	0	890	6477
1/2/2014	8.3	36.5	10.8	44.4	-44.8	26	1800	1240	2100	1180	1200	1145	5,100	0	950	6050
1/3/2014	8	34.3	11.8	45.9	-44.4	45	2640	1427	1930	1180	1450	1212	6,020	0	1025	7045
1/10/2014	7.2	31.6	11.9	49.3	-43.2	79	1422	1563	2315	1325	1687	1293	5,424	0	1204	6628

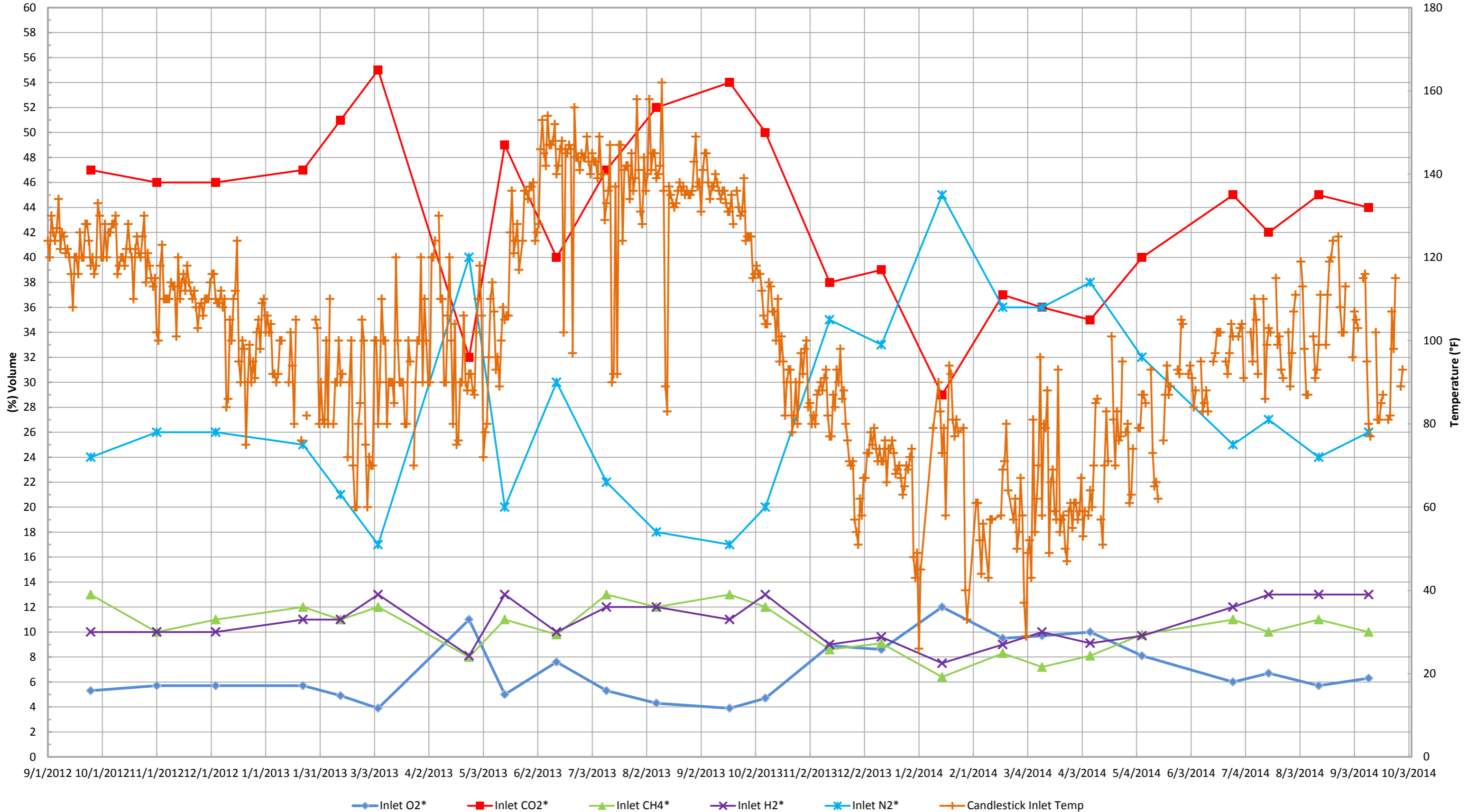
Date	Candlestick Flare FL-100 (Flare Sta 2)								Flare Sta #1 FL-140		Flare Sta #3 FL-120		Total Utility Flare Flow	East Side Flare		Total Flow
	CH4	CO2	O2	Bal.	Press./Vac.	Gas Inlet Temp (°F)	Flow (scfm)	Flare Temp.	Flow (scfm)	Flare Temp.	Flow (scfm)	Flare Temp.	Flow (scfm)	CH4	Flow (scfm)	scfm
1/13/2014	8.2	35.6	10.2	46	-44.7	90	1110	1157	1010	2040	1367	6,450		972	7422	
1/14/2014	7.8	39.7	10.3	42.2	-44.5	83	2650	1323	791	992	2360	1366	5,801	975	6776	
1/15/2014	7.8	32.5	10.9	48.8	-45.2	73	1600	1400	2808	1237	1750	1326	6,158	1035	7193	
1/16/2014	8	33	10.9	48.1	-45.2	79	1906	1516	2795	1101	1743	1426	6,444	1022	7466	
1/17/2014	6.8	27.6	13	52.6	-44.5	58	1216	1409	2893	1338	1900	1361	6,009	945	6954	
1/19/2014	9.4	37.5	9.2	43.9	-44.4	94	2203	1248	2756	1299	1623	1367	6,582	833	7415	
1/20/2014	8.7	40.6	9.4	41.3	-44.7	92	1824	1471	3331	1007	2201	1161	7,356	1075	8431	
1/21/2014	8.7	34	10.6	46.7	-43.9	81	1914	1435	2620	1134	1375	1018	5,909	1437	7346	
1/22/2014	8.6	36.8	9.6	45	-44.1	77	2098	1452	2070	1125	1313	1295	5,481	866	6347	
1/23/2014	9.5	38.8	9.8	41.9	-44.4	81	1907	1381	2690	1323	1120	1092	5,717	1003	6720	
1/24/2014	9.2	41.2	9.8	39.8	-43.6	78	2009	1400	2240	1155	1034	1277	5,283	1092	6375	
1/27/2014	8.7	35.4	10.1	45.8	-44.1	79	1851	1384	2364	1191	1514	1410	5,729	963	6692	
1/28/2014	9.9	45.4	9	35.7	-44.4	40	1542	1417	2580	1340	1083	1142	5,205	975	6180	
1/29/2014	9.1	38.2	9.7	43	-44.1	33	1332	1476	2413	1107	1415	1219	5,160	906	6066	
2/3/2014	9.2	37.1	9.1	44.6		61	1570		1565		2437		5,572	907	6479	
2/4/2014	9.2	36.8	9.7	44.3		61	1444		1537		2426		5,407	1100	6507	
2/5/2014	8.4	36.4	9.9	45.3	-44	52	1510	1406	1392	1077	2511	1312	5,413	1017	6430	
2/6/2014	9.2	39.7	9.5	41.6	-43.2	44	1297	1454	1326	903	2309	1270	4,932	1015	5947	
2/7/2014	9.7	40.9	8.2	41.2	-44	56	1206	1422	1038	2112	1102	848	4,591	1140	5731	
2/10/2014	8.4	38.2	9.3	44.1	-43.9	43	1231	1430	1382	1142	2775	1236	5,388	988	6376	
2/11/2014	8.9	40.4	8.9	41.8	-43.1	57	1155	1024	1400	1047	2323	982	4,878	978	5856	
2/12/2014	9.8	40.2	8.2	41.8	-43.5	57	1223	1039	1446	1134	2497	1227	5,166	969	6135	
2/17/2014	9.5	38.4	9.4	42.7	-43.3	58	1380	1324	1393	1331	2508	1264	5,281	775	6056	
2/18/2014	8.4	38.9	9.3	43.4	-43.8	69	1408	1195	1475	1388	2559	1229	5,442	868	6310	
2/19/2014	8	35.9	9.8	46.3	-44.5	71	1392	1177	1543	1200	2581	1304	5,516	888	6404	
2/20/2014	9.2	41	8.7	41.1	-43.4	80	1452	1343	1660	1357	2546	1318	5,658	532	6190	
2/21/2014	8.1	36	10.2	45.7	-43.8	64	1362	1389	1567	1277	2407	1308	5,336	551	5887	
2/24/2014	8	38.5	10	43.5	-44.2	57	1402	1105	1492	1287	2545	1247	5,439	426	5865	
2/25/2014	7.9	41.8	9.7	40.6	-43.7	62	1416	1193	1512	1310	2510	1196	5,438	1240	6678	
2/26/2014	8.6	40.1	9.9	41.4	-43.8	50	1473	1182	1579	1267	2354	1313	5,406	780	6186	
2/27/2014	8.2	37.3	9.8	44.7	-43.7	54	1450	1237	1566	1315	2403	1177	5,419	520	5939	
2/28/2014	9.2	41.6	9.3	39.9	-44.1	67	1845	1330	1400	1397	2320	1272	5,565	750	6315	
3/1/2014	7.8	34.8	9.9	47.5	-44.7	58	1446	1204	1994	1342	2191	1244	5,630	705	6335	
3/2/2014	8.8	31.8	10.5	48.9	-43.4	37	1486	1200	1892	1380	2257	1160	5,634	792	6427	
3/3/2014	9.5	38.3	9	43.2	-44.2	29	1378	1068	1776	1315	2182	823	5,337	906	6243	
3/4/2014	9.5	40.9	8.9	40.7	-43.8	49	1488	1050	2000	1325	2168	1150	5,656	770	6426	
3/5/2014	9.7	39.7	8.5	42.1	-44.4	52	1501	907	2023	1390	2116	1223	5,640	730	6370	
3/6/2014	9.1	42.2	8.8	39.9	-44.6	43	1344	970	2006	1353	2100	1240	5,450	650	6100	
3/7/2014	10.4	42.4	7.8	39.4	-43.7	81	1402	1017	1993	1391	2123	1217	5,519	775	6293	
3/8/2014	9.8	41.9	8.2	40.1	-45.4	54	1391	1040	1912	1400	2100	1140	5,403	1131	6535	
3/9/2014	9.3	40.7	8.4	41.6	-44.4	62	1399	995	1953	1390	2089	1115	5,441	1065	6506	
3/10/2014	9.6	45.9	7	37.5	-44.4	70	1428	1316	2067	1439	2145	1031	5,641	951	6592	
3/11/2014	10.6	49.5	5.8	34.1	-44	96	1066	1149	2152	1321	2348	1215	5,566	912	6478	
3/12/2014	8.8	41.5	8.3	41.4	-44.1	58	1586	1240	1486	1303	2289	1260	5,361	831	6192	
3/13/2014	9.8	41.5	8.3	40.4	-43.4	80	1853	1250	2040	1292	1426	1270	5,319	875	6194	
3/14/2014	10.7	45.7	6.7	36.9	-44.7	79	1555	1330	1767	1527	2308	1301	5,630	830	6460	
3/15/2014	10.3	48.6	6.1	34.6	-44	88	975	1237	1917	1311	2555	1182	5,446	814	6260	
3/16/2014	8.5	39	9.6	42.9	-41.8	49	1125	1246	2089	1453	2016	1231	5,230	788	6018	
3/17/2014	10.1	45.5	6.6	37.8	-45.5	66	834	1086	2336	1341	2247	1041	5,417	837	6254	
3/18/2014	10	49.4	6.4	34.2	-44.4	69	1189	1270	2317	1360	2641	1274	6,147	808	6955	
3/19/2014	8.8	41	8.4	41.8	-43.4	59	1171	1298	2817	1377	2564	1293	6,551	826	7377	
3/20/2014	9.5	42.8	7.5	40.2	-43	57	1632	1202	2586	1379	2452	1077	6,670	765	7435	
3/21/2014	11.5	48.3	5.6	34.6	-43.4	93	1693	1283	2748	1436	2378	1035	6,818	763	7581	
3/22/2014	8.9	41.6	8.4	41.1	-43.1	54	1422	1142	2771	1319	2212	1121	6,405	775	7180	
3/23/2014	9.2	43	8	39.8	-43.4	57	1400	1138	2543	1212	2362	1259	6,304	803	7107	
3/24/2014	9.5	42.2	7.8	40.5	-43.8	58	1573	1127	2375	1182	2390	1081	6,338	816	7155	
3/25/2014	9	42.5	7.9	40.6	-44.3	50	1717	1247	2567	1273	2037	1147	6,322	845	7167	
3/26/2014	9.1	40.7	8.9	41.3	-44.2	47	1624	1212	2500	1305	2114	1147	6,238	814	7051	
3/27/2014	10.1	45	7.4	37.5	-43.6	59	1468	1254	2577	1369	2047	1109	6,092	541	6633	
3/28/2014	9	41.4	8.5	41.1	-43.4	61	1328	1115	2400	1250	2298	1281	6,027	571	6597	
3/29/2014	8.5	37.1	9.8	44.6	-44.3	55	1315	1183	2519	1278	1869	1174	5,704	753	6457	
3/30/2014	9.5	39.7	8.3	42.5	-44	61	1451	1136	2955	1752	1256	1207	6,158	858	7016	
3/31/2014	9.3	39.2	9.2	42.3	-44.1	61	1226	1251	2643	1357	2354	1269	6,223	1027	7250	
4/1/2014	8.9	39.1	8.9	43.1	-44.3	57	1391	1171	2468	1318	2170	1173	6,029	898	6926	
4/2/2014	9.1	36.4	9.9	44.6	-44.5	59	1624	1198	2276	1267	2082	1132	5,982	783	6765	
4/3/2014	9.8	40.3	8.5	41.4	-44.4	67	1646	1201	2052	1232	2443	1203	6,141	705	6847	
4/4/2014	9.5	38.3	8.9	43.3	-44.7	53	1846	1271	2171	1341	2178	1283	6,195	693	6888	
4/5/2014	10.2	44.5	7.4	37.9	-44.5	59	1875	1259	2170	1222	2370	1139	6,415	781	7196	
4/6/2014					-44.6		2039	1171	2247	1235	2191	1103	6,478	771	7249	
4/7/2014	10.8	43.9	7.6	37.7	-44.7	58	1804	1206	2114	1248	2224	1129	6,141	927	7068	
4/8/2014	10.6	42	7.7	39.7	-44.7	64	1777	1210	2061	1262	2265	1191	6,103	896	6999	
4/9/2014	10.1	41.4	8	40.5	-44.5	60	1854	1236	2085	1273	2216	1135	6,155	933	7088	
4/10/2014	10.9	43.1	7.4	38.6	-44.3	70	1723	1239	2079	1341	2518	1204	6,320	890	7210	
4/11/2014	10.5	43.2	7	39.3	-42.8	85	2011	1245	2083	1200	1801	1038	5,896	871	6767	

Date	Candlestick Flare FL-100 (Flare Sta 2)								Flare Sta #1 FL-140		Flare Sta #3 FL-120		Total Utility Flare Flow		East Side Flare		Total Flow scfm
	CH4	CO2	O2	Bal.	Press./Vac.	Gas Inlet Temp (°F)	Flow (scfm)	Flare Temp.	Flow (scfm)	Flare Temp.	Flow (scfm)	Flare Temp.	Flow (scfm)	CH4	Flow (scfm)		
4/12/2014					-44.5	86	2171	1358	2371	1328	1626	1114	6,168		895	7063	
4/13/2014					-44.4		2222	1340	2358	1340	1780	1082	6,359		880	7239	
4/14/2014	10.3	42.3	7.8	39.6	-44.7	57	2220	1289	2308	1285	1502	1123	6,031		816	6847	
4/15/2014	9.8	40.9	8.3	41	-44.5	51	2250	1271	2194	1223	1531	1038	5,976		733	6709	
4/16/2014	10.5	43.6	7.6	38.3	-44.6	70	2279	1336	2157	1282	1737	1136	6,174		624	6797	
4/17/2014	10.6	41.8	7.2	40.4	-43.7	83	2260	1272	2482	1279	1732	988	6,474		781	7256	
4/18/2014	10.6	43.7	7	38.7	-44.6	71	2074	1247	2735	1307	1625	1014	6,434		908	7342	
4/19/2014					-44.6		2233	1315	2773	1262	1682	1038	6,689		856	7544	
4/20/2014	11	46.3	6	36.7	-44.6	101	2286	1346	2804	1260	1743	1061	6,833		842	7675	
4/21/2014	10.7	44.3	6.7	38.3	-44.1	81	2189	1273	2875	1248	1801	994	6,864		808	7672	
4/22/2014	10.7	41.7	7.5	40.1	-44.7	70	2093	1279	3292	1309	2046	1106	7,431		848	8279	
4/23/2014	11.4	48.6	5.7	34.3	-44.6	83	1996	1280	3251	1323	2070	1099	7,317		814	8131	
4/24/2014	10.5	40.9	7.8	40.8	-39.4	76	2056	1237	2997	1230	1652	1044	6,705		692	7398	
4/25/2014	10.5	45.9	6.5	37.1	-43.5	77	2384	1311	3324	1316	1632	1023	7,340		699	8039	
4/26/2014	12	47.7	5.9	34.4	-44.5	95	2388	1336	3312	1324	1611	1028	7,311		951	8262	
4/27/2014					-44.6		2399	1351	3286	1328	1612	1135	7,297		909	8206	
4/28/2014	11.4	43.6	7.3	37.7	-44.5	78	2282	1346	3178	1320	1446	1130	6,906		944	7850	
4/29/2014	12.7	50.2	5	32.1	-44.7	80	2088	1321	2993	1393	1361	1119	6,442		935	7377	
4/30/2014	10.5	40.7	8	40.8	-44.6	61	2000	1302	3025	1346	1639	1054	6,663		942	7606	
5/1/2014	11.1	42.8	7	39.1	-43.5	63	1765	1266	2843	1328	2017	997	6,625		947	7572	
5/2/2014	11.4	46.1	6.5	35.5	-44.2	74	1650	1261	2812	1312	2290	1031	6,752		905	7657	
5/3/2014							1903	1279	3084	1292	2058	1014	7,045		908	7954	
5/4/2014							2313	1319	3362	1334	1503	1043	7,178		921	8099	
5/5/2014	11.2	44.2	6.6	38	-44.0	79	2409	1315	3480	1354	1556	1030	7,445		831	8276	
5/6/2014	11.9	45.8	6.3	36	-44.8	79	2265	1305	3054	1243	1430	957	6,749		774	7523	
5/7/2014	12.2	46.7	6	35.1	-44.2	87	1641	1339	3309	1399	1943	962	6,893		806	7699	
5/8/2014	11.7	44.4	6.5	37.4	-43.8	87	1319	1325	3075	1422	2456	1112	6,851		836	7687	
5/9/2014	11.1	42.6	6.7	39.6	-44.7	85	1314	1271	3082	1357	2523	1095	6,919		788	7706	
5/10/2014							1328	1256	3151	1301	2523	1090	7,002		769	7771	
5/11/2014							1341	1286	3150	1356	2595	1121	7,086		767	7853	
5/12/2014	11.1	42.9	6.9	39.1	-43.8	93	1358	1300	3133	1384	2727	1164	7,219		767	7985	
5/13/2014	11	42.1	7.3	39.4	-44.7	73	868	954	2371	1163	2238	1021	5,478		707	6185	
5/14/2014	13.1	47	5.9	34	-44.8	65	640	758	2395	1309	2289	1096	5,324		767	6091	
5/15/2014	12.6	46.8	6.1	34.5	-43.9	66	1149	1205	2578	1288	2189	1071	5,916		792	6708	
5/16/2014	12.6	44	6.8	36.6	-43.9	62	1306	1236	2758	1325	2271	1128	6,335		719	7054	
5/17/2014							1441	1223	2953	1250	2305	1022	6,698		679	7377	
5/18/2014							1505	1291	3009	1257	2318	1081	6,832		833	7665	
5/19/2014	12.4	44.1	6.7	36.8	-43.0	76	1473	1306	2946	1327	2558	1181	6,977		760	7736	
5/20/2014	12.8	48.7	5.6	32.9	-43.6	87	1599	1257	2788	1293	2404	1088	6,791		763	7555	
5/21/2014	13	55.7	4.8	26.5	-44.8	94	1479	1239	2772	1309	2647	1125	6,898		763	7661	
5/22/2014	11.9	46.8	5.9	35.4	-43.7	87	1359	1179	2678	1303	3166	1179	7,204		728	7932	
5/23/2014	12.2	47.6	5.6	34.6	-43.9	89	1296	1215	2648	1306	3226	1248	7,169		692	7861	
5/24/2014							1476	1256	2590	1233	3198	1231	7,265		599	7864	
5/25/2014							1338	1201	2490	1241	3002	1189	6,830		697	7527	
5/26/2014							1380	1256	2589	1223	2999	1198	6,967		683	7650	
5/27/2014	11.6	44.4	6.5	37	-43.5	93	1431	1245	2939	1260	3482	1271	7,852		659	8510	
5/28/2014	10.8	42.3	6.3	40.6	-43.1	92	1415	1177	2941	1249	3496	1259	7,851		595	8446	
5/29/2014	13.2	49.1	4.9	32.8	-44.7	105	1401	1239	2964	1256	3567	1233	7,932		537	8469	
5/30/2014	11.4	53.6	4.3		30.7	104	1360	1217	2976	1300	3623	1250	7,959		436	8395	
5/31/2014							1360	1229	3007	1297	3647	1217	8,014		356	8370	
6/1/2014							1647	1174	2000	881	3464	1148	7,111		283	7394	
6/2/2014	12.2	49.6	5.4	32.8	-44.5	92	1922	1305	3194	1320	2700	1139	7,815		223	8038	
6/3/2014	11.3	50.2	5.1	33.4	-43.3	94	2022	1247	3265	1215	2811	1131	8,099		160	8259	
6/4/2014	13.2	52.9	4.2	29.7	-44.2	91	1936	1304	3471	1380	2962	1154	8,370		151	8521	
6/5/2014	12.2	48.7	5.6	33.5	-43.7	84	1874	1285	3372	1329	2847	1159	8,093		141	8234	
6/6/2014	13.5	53.6	4.3	28.6	-43.6	88	1890	1286	3400	1276	2711	1129	8,000		317	8317	
6/7/2014							1686	1313	3080	1308	2496	1182	7,262		743	8006	
6/8/2014							1668	1306	3083	1303	2462	1141	7,213		673	7886	
6/9/2014	12.1	43.2	7.1	37.6	-42.9	95	1612	1292	2987	1329	2332	1159	6,931		634	7565	
6/10/2014	10.8	40.9	7.4	40.9	-45.0	83	1636	1302	3003	1289	2424	1148	7,063		586	7649	
6/11/2014	10.7	42.4	7.7	39.2	-44.0	85	1653	1300	3031	1279	2492	1136	7,176		536	7711	
6/12/2014	10.5	44.6	6.8	38.1	-44.2	88	1674	1277	3069	1297	2456	1094	7,199		538	7737	
6/13/2014	10.9	41.3	7.2	40.6	-44.4	83	1487	1161	2979	1308	2248	1100	6,714		558	7272	
6/14/2014							1762	1356	3184	1256	2590	1189	7,536		489	8025	
6/15/2014							1764	1344	3176	1330	2596	1185	7,536		503	8040	
6/16/2014	10.4	40.8	7.5	41.3	-44.0	95	1880	1367	3361	1345	2628	1204	7,870		436	8306	
6/17/2014	12.1	48.2	5.8	33.9	-43.2	97	2437	1318	2678	1442	2919	1184	8,034		527	8561	
6/18/2014	10.6	43.3	6.3	39.8	-44.1	102	2154	1374	2853	1482	2771	1130	7,778		642	8420	
6/19/2014	10.5	40.1	7.1	42.3	-44.4	102	1938	1358	2686	1524	2725	1203	7,349		846	8195	
6/20/2014	10.7	42	7	40.3	-44.4	102	1914	1338	2606	1432	2800	1300	7,320		863	8182	
6/21/2014							1915	1351					1,915		830		
6/22/2014							1886	1386					1,886		603		
6/23/2014	10.5	42	7.4	40.1	-44.1	95	1955	1347	2644	1515	2818	1283	7,417		582	7998	
6/24/2014	10.4	41.6	7.3	40.7	-43.7	92	1933	1353	2603	1517	2695	1212	7,231		742	7974	

Date	Candlestick Flare FL-100 (Flare Sta 2)								Flare Sta #1 FL-140		Flare Sta #3 FL-120		Total Utility Flare Flow	East Side Flare		Total Flow
	CH4	CO2	O2	Bal.	Press./Vac.	Gas Inlet Temp (°F)	Flow (scfm)	Flare Temp.	Flow (scfm)	Flare Temp.	Flow (scfm)	Flare Temp.	Flow (scfm)	CH4	Flow (scfm)	scfm
6/25/2014	10.4	42.4	7	40.2	-44.1	97	2102	1353	2708	1517	3033	1288	7,843			8105
6/26/2014	10.1	41.5	7.3	41.1	-44.0	104	1954	1339	2914	1300	3540	1311	8,408			8408
6/27/2014	11.9	50.9	5.2	32	-43.1	101	1577	1144	3471	1349	3505	1241	8,553			8553
6/28/2014							1971	1350	3462	1404	3501	1256	8,934			8934
6/29/2014							1887	1329	3334	1386	3390	1210	8,611			8611
6/30/2014	10.9	44.7	6.8	37.6	-43.7	101	2027	1298	3360	1391	3427	1189	8,814			8814
7/1/2014	11.9	48.5	5.4	34.2	-44.6	103	1902	1304	3662	1449	3617	1243	9,181			9181
7/2/2014	12.2	49.9	5.2	32.7	-43.9	104	1599	1301	3221	1471	3406	1311	8,226			8226
7/3/2014	11.6	46.2	5.8	36.4	-43.6	91	1795	1290	3484	1453	3538	1281	8,816			8816
7/4/2014							1933	1317	3611	1391	3623	1306	9,167			9167
7/5/2014							1537	1271	3140	1368	3229	1215	7,906			7906
7/6/2014							1960	1324	3497	1441	3527	1245	8,985			8985
7/7/2014	11.8	48.3	5.5	34.4	-44.2	102	2042	1310	3552	1465	3529	1263	9,123			9123
7/8/2014	12	47.1	5.7	35.2	-43	95	2083	1286	3096	1352	3324	1310	8,503			8503
7/9/2014	12.2	51.9	4.7	31.2	-44.5	110	2114	1307	3432	1407	2898	1175	8,444			8444
7/10/2014	12.7	51	4.4	31.9	-44.8	105	2103	1293	3474	1350	2906	1212	8,483			8483
7/11/2014	11.4	46.3	6.4	35.9	-44	92	2292	1286	3085	1232	2656	1050	8,033			8033
7/12/2014							2308	1334	3859	1458	3229	1201	9,396			9396
7/13/2014							2253	1326	3818	1460	3183	1203	9,254			9254
7/14/2014	12.8	50.4	4.8	32	-43.8	110	2059	1264	3509	1429	3045	1166	8,613			8613
7/15/2014	11.6	45.8	6.3	36.3	-43.5	86	2057	1295	3377	1444	2998	1212	8,432			8432
7/16/2014	10.7	42.5	7.1	39.7	-46.9	99	2190	1343	3743	1445	3185	1210	9,118			9118
7/17/2014	11.4	46.4	5.9	36.3	-49.5	103	2232	1336	3601	1217	3121	1229	8,953			8953
7/18/2014	11.3	44.6	6.3	37.8	-48.9	102	2294	1356	3853	1285	3303	1337	9,450			9450
7/19/2014							2349	1338	3525	1283	3116	1207	8,989			8989
7/20/2014							2375	1378	3875	1304	3263	1225	9,514			9514
7/21/2014	12.1	47.8	5.6	34.5	-49	115	2384	1366	3877	1359	3317	1227	9,578			9578
7/22/2014	11.3	44.5	6.3	37.9	-49.1	99	2440	1362	3913	1399	3344	1218	9,697			9697
7/23/2014	10.8	43.6	6.8	38.8	-47.1	101	2290	1327	3845	1477	3250	1233	9,385			9385
7/24/2014	11.4	43.5	6.5	38.6	-46.7	93	2184	1335	3718	1450	3167	1227	9,069			9069
7/25/2014	11.4	43.8	6.7	38.2	-47.2	91	2128	1376	3659	1381	3187	1219	8,975			8975
7/26/2014							2094	1226	3229	1229	2848	1121	8,172	243		8415
7/27/2014							2354	1343	3304	1323	3180	1268	8,838	576		9414
7/28/2014	12.6	47.3	5.6	34.5	-47	102	1981	1271	3377	1312	3048	1215	8,407	222		8629
7/29/2014	10.3	41.4	7.6	40.7	-47	89	2103	1340	3637	1375	3097	1180	8,837			8837
7/30/2014	10.5	42.2	7	40.3	-47	97	2197	1338	3723	1368	3081	1169	9,001			9001
7/31/2014	12	48.3	5.3	34.4	-47.2	107	2200	1340	3663	1305	3091	1186	8,954			8954
8/1/2014	11.5	48.2	5.5	34.8	-47	111	2121	1352	3620	1334	3072	1205	8,814			8814
8/2/2014							2135	1341	3650	1338	3103	1168	8,888			8888
8/3/2014							2235	1307	3484	1311	2952	1157	8,671			8671
8/4/2014	10.9	48.8	5.5	34.8	-47	119	2272	1366	3806	1404	3206	1216	9,284			9284
8/5/2014	11.8	44.4	6	37.8	-47.4	113	2241	1349	3748	1382	3193	1262	9,182	32		9215
8/6/2014	11	44.5	6.8	37.7	-46.4	98	1925	1143	3206	1181	2744	1105	7,875			7875
8/7/2014	10.6	44	7	38.4	-46.8	87	2040	1334	3496	1399	3135	1243	8,671			8671
8/8/2014	10.7	43	6.9	39.4	-46.4	87	2128	1345	3615	1470	3087	1190	8,830			8830
8/9/2014							2070	1326	3552	1477	3039	1182	8,661			8661
8/10/2014							2128	1343	3652	1492	3102	1194	8,882			8882
8/11/2014	12	45.2	5.7	37.2	-47.5	101	2153	1331	3674	1490	3096	1249	8,923			8923
8/12/2014	11.9	47.8	6.2	34.1	-47.5	91	2065	1333	3588	1497	3098	1244	8,751			8751
8/13/2014	11.4	46.9	6.6	35.1	-46.8	93	2147	1348	3691	1491	3158	1178	8,996			8996
8/14/2014	11.4	49.4	5.6	33.6	-47.7	99	2240	1343	3588	1469	3048	1216	8,877			8877
8/15/2014	17.8	55.7	4.5	22	-46.9	111	2229	1356	3759	1455	3152	1234	9,140			9140
8/16/2014							2080	1357	3589	1455	3095	1151	8,763			8763
8/17/2014							2081	1341	3596	1477	3095	1170	8,772			8772
8/18/2014	16	49.4	5.5	29.1	-47.2	99	2149	1343	3656	1480	3221	1188	9,026			9026
8/19/2014	11.4	51.8	5.5	31.3	-50.2	111	2152	1355	3699	1440	3420	1231	9,270			9270
8/20/2014	12.2	50.5	5.2	32.1	-47.2	119	2107	1334	3713	1463	3340	1293	9,159			9159
8/21/2014	17.4	55	4	23.6	-46.3	120	2138	1331	3629	1400	3319	1180	9,086			9086
8/22/2014	12.6	51	3.8	32.6	-46.9	124	2249	1331	3814	1442	3397	1219	9,460			9460
8/23/2014							2359	1353	3905	1479	3495	1265	9,759			9759
8/24/2014							2275	1257	3458	1351	3256	1181	8,988			8988
8/25/2014	11.4	57.1	5.8	25.7	-47.1	125	2363	1375	3936	1507	3496	1274	9,794			9794
8/26/2014	10.4	46.2	6.6	36.8	-47.8	108	2094	1281	3501	1382	3061	1171	8,656			8656
8/27/2014	10.6	45.7	6.9	36.8	-47.7	102	2156	1355	3816	1471	3325	1295	9,297			9297
8/28/2014	10.7	45	7.1	37.2	-47.6	102	2073	1375	3863	1514	3170	1261	9,105			9105
8/29/2014	10.8	48.4	7	33.8	-47.5	113	2012	1374	3749	1510	3200	1185	8,961			8961
8/30/2014							1966	1371	3474	1510	3437	1169	8,877			8877
8/31/2014							2142	1377	3640	1481	3464	1213	9,245			9245
9/1/2014							1954	1297	3154	1368	3383	1195	8,491			8491
9/2/2014	12.6	48.6	6.8	32	-46.8	96	1670	1343	3136	1460	3740	1294	8,546			8546
9/3/2014	10.6	46.5	6.8	36.1	-46.7	107	1739	1359	3479	1467	3630	1234	8,848	34		8882
9/4/2014	10.4	43.6	6.4	39.6	-47.6	105	2298	1390	3381	1479	3323	1214	9,002			9002
9/5/2014	9.3	39.4	7.9	43.4	-46	103	2320	1377	3467	1446	3321	1277	9,108			9108
9/6/2014							2009	1395	3115	1457	3271	1236	8,395			8395

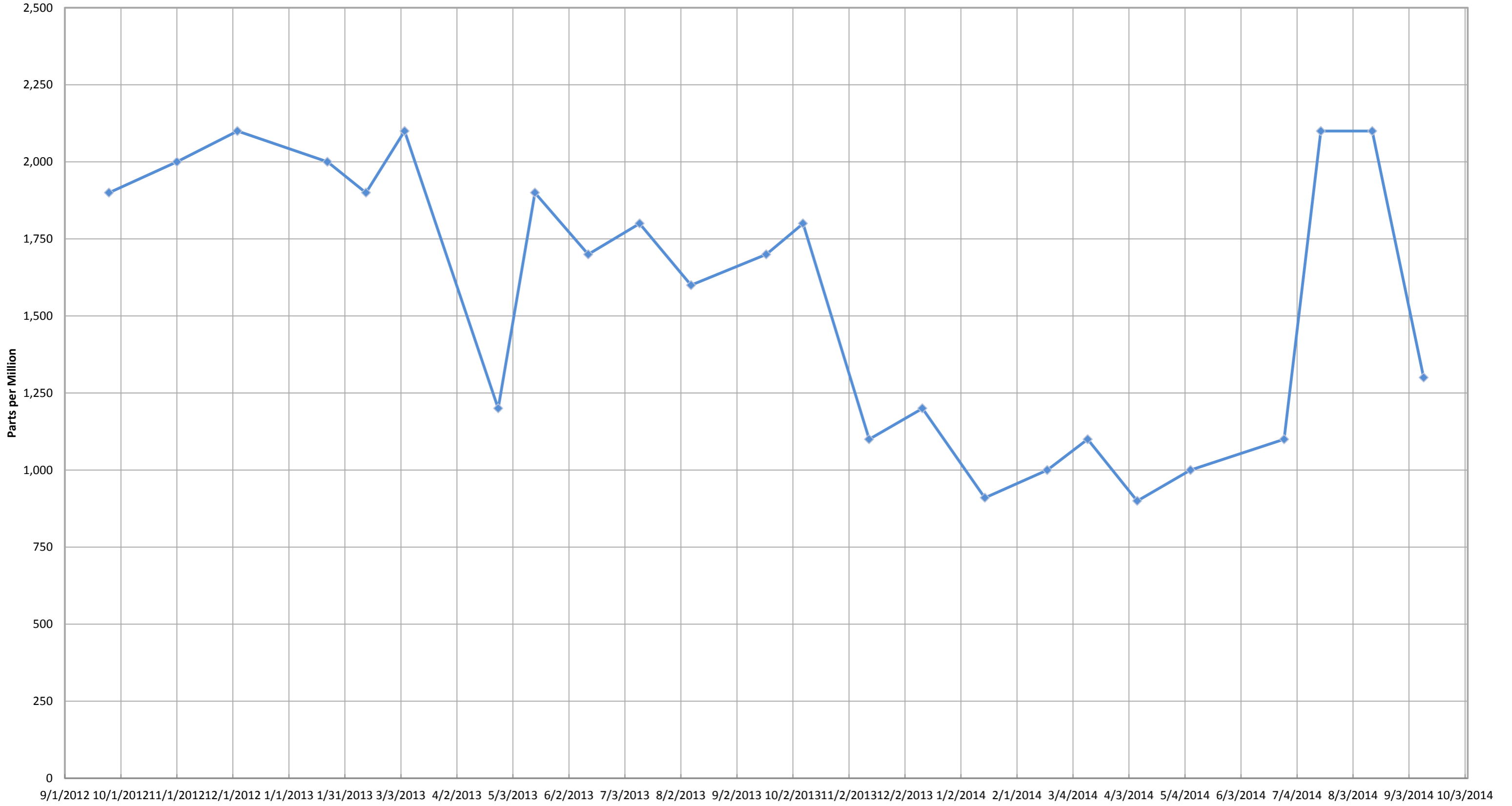
Date	Candlestick Flare FL-100 (Flare Sta 2)								Flare Sta #1 FL-140		Flare Sta #3 FL-120		Total Utility Flare Flow	East Side Flare		Total Flow
	CH4	CO2	O2	Bal.	Press./Vac.	Gas Inlet Temp (°F)	Flow (scfm)	Flare Temp.	Flow (scfm)	Flare Temp.	Flow (scfm)	Flare Temp.	Flow (scfm)	CH4	Flow (scfm)	scfm
9/7/2014							2102	1372	3212	1419	3256	1258	8,569			8569
9/8/2014	12.6	51.1	4.8	31.5	-47.7	115	2080	1382	3204	1434	3243	1216	8,526			8526
9/9/2014	11.7	52.3	5.3	30.7	-49.2	116	2037	1364	3526	1504	2960	1187	8,523			8523
9/10/2014	11	49.1	6.6	33.3	-49.6	95	1916	1346	3721	1457	2806	1179	8,443			8443
9/11/2014	10.8	44.8	7.5	36.9	-49.4	80	1799	1327	3450	1474	2651	1176	7,900			7900
9/12/2014	10.8	44	7.9	37.3	-49.6	77	1720	1312	3374	1475	2725	1155	7,819			7819
9/13/2014							1782	1335	3477	1449	2740	1138	7,999			7999
9/14/2014							1877	1355	3618	1449	2674	1127	8,169			8169
9/15/2014	11.7	48.2	6.1	34	-50.2	102	1928	1370	3595	1483	2654	1138	8,176			8176
9/16/2014	11.1	45	7.2	36.7	-50.4	81	1935	1356	3576	1448	2612	1167	8,123			8123
9/17/2014	11.3	44.9	7.3	36.5	-49.7	81	1927	1379	3503	1487	2704	1176	8,134			8134
9/18/2014	10.5	43.8	7.6	38.1	-50	85	2058	1364	3716	1467	2741	1247	8,515			8515
9/19/2014	10.4	43.4	7.3	38.9	-50.3	87	2111	1410	3769	1508	2801	1181	8,681			8681
9/20/2014							2259	1360	3156	1398	3125	1162	8,540			8540
9/21/2014							2119	1313	2785	1401	3156	1223	8,060			8060
9/22/2014	11.5	43.5	7.7	37.3	-49.5	81	2177	1388	2978	1403	3165	1269	8,320			8320
9/23/2014	9.9	43.3	8	38.8	-49.7	82	2210	1407	3008	1406	3257	1277	8,476			8476
9/24/2014	10	42	7.3	40.7	-50.2	107	2214	1443	2970	1402	3152	1258	8,336		415	8752
9/25/2014	9.5	41.2	8.2	41.1	-49.4	98	2215	1453	2981	1428	3049	1256	8,244		721	8966
9/26/2014	10.5	51.6	6.1	31.8	-49.7	115	2375	1418	3139	1414	3259	1282	8,772		231	9004
9/27/2014							2357	1392	3151	1405	3341	1273	8,850			8850
9/28/2014							2409	1393	3164	1402	3336	1270	8,909			8909
9/29/2014	10.6	44.2	7.4	37.8	-49.1	89	2244	1380	3025	1443	3105	1252	8,374		467	8841
9/30/2014	10.1	40.3	8.2	41.4	-49.5	93	2332	1383	3044	1405	3235	1318	8,611		233	8844

Inlet Gas and Temperature*



*Gas data collected from Laboratory Reports. Temperature data collected from GEM 2000 field readings.

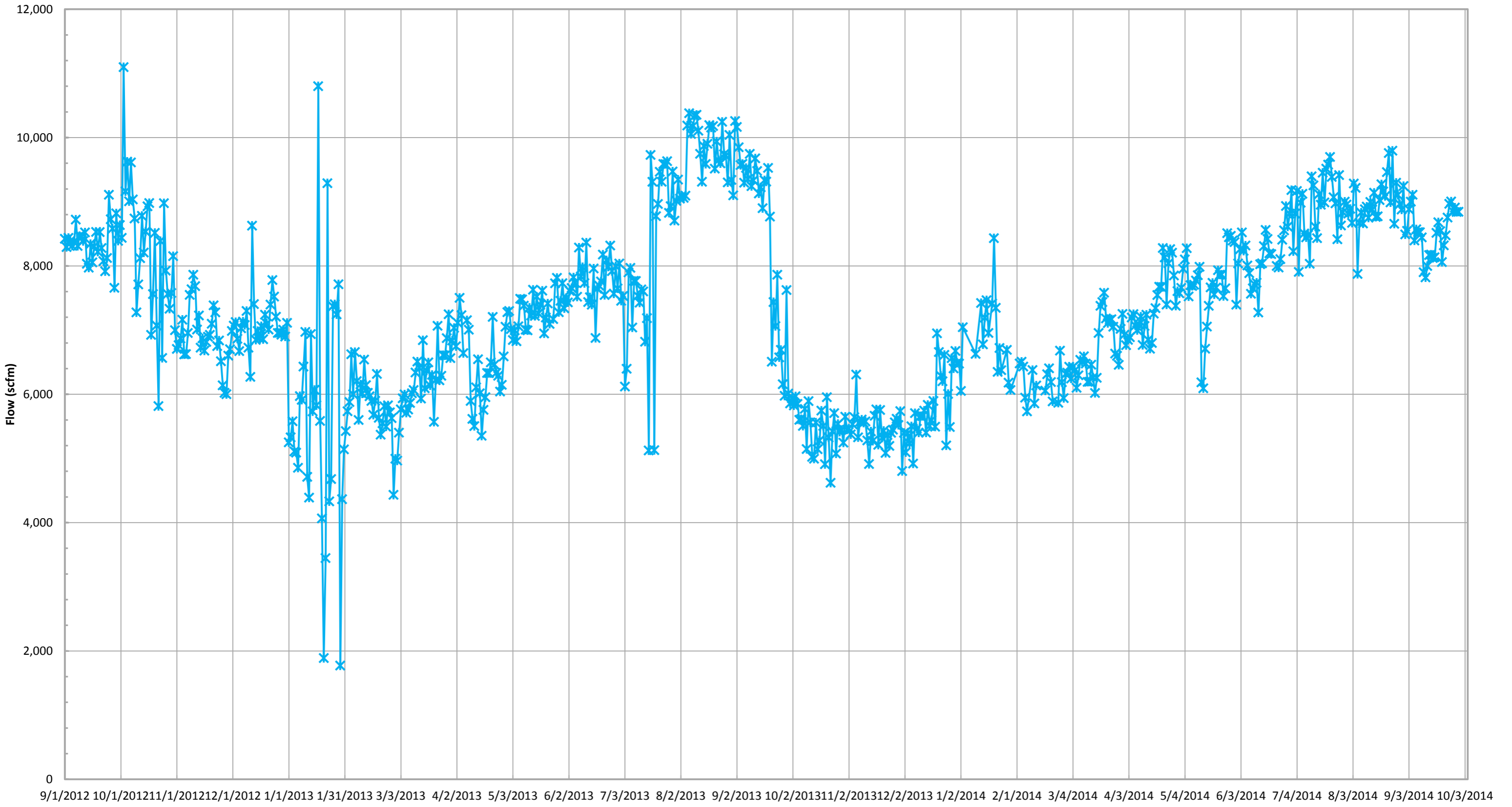
Inlet Carbon Monoxide*



—◆— Inlet Carbon Monoxide*

*Data collected from Laboratory Reports.

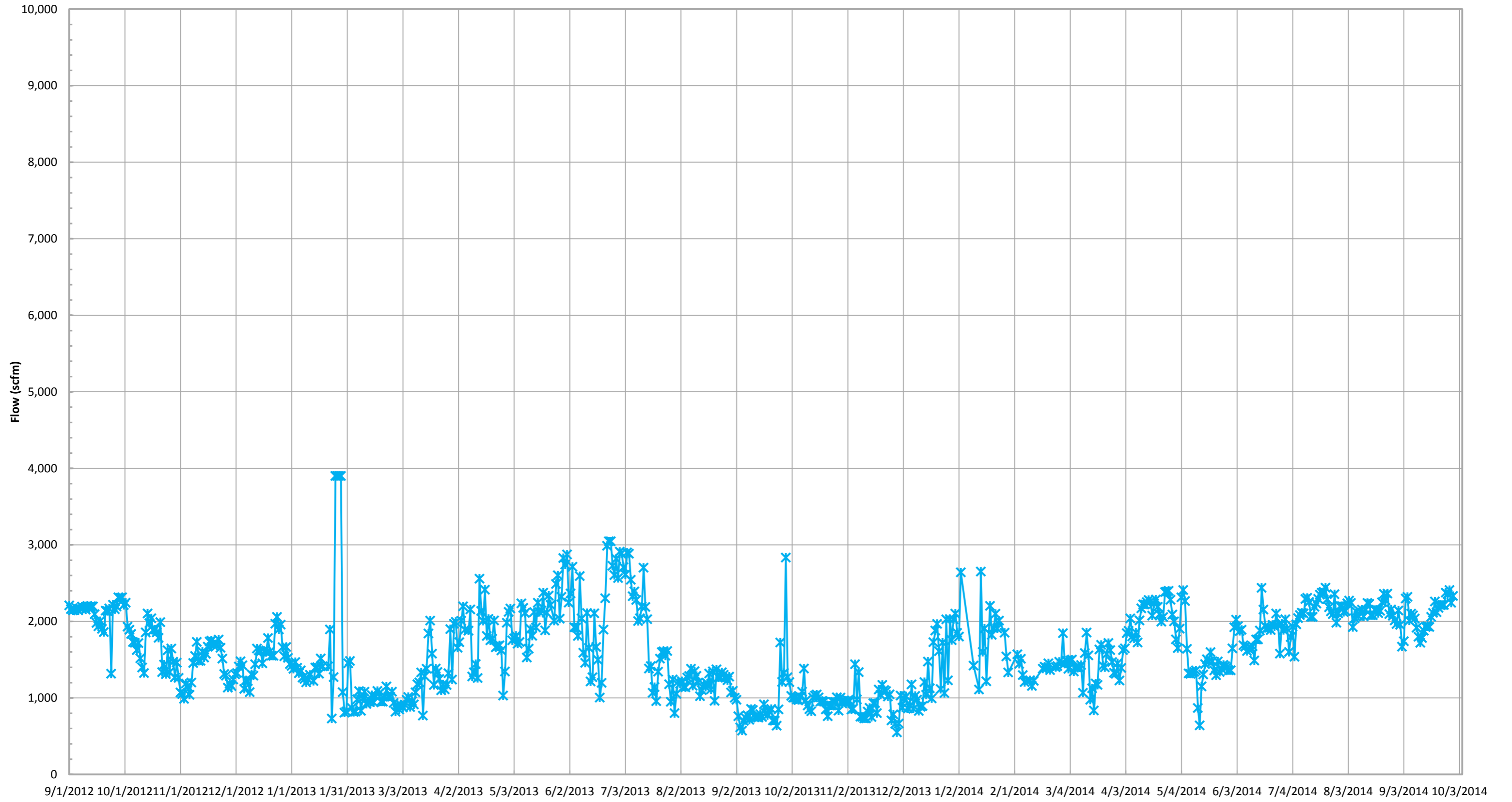
Total Combined Flow (scfm)*



—x— Total Combined Flow (scfm)*

*Combined flow is based on tabulated flow data collected daily from each device.

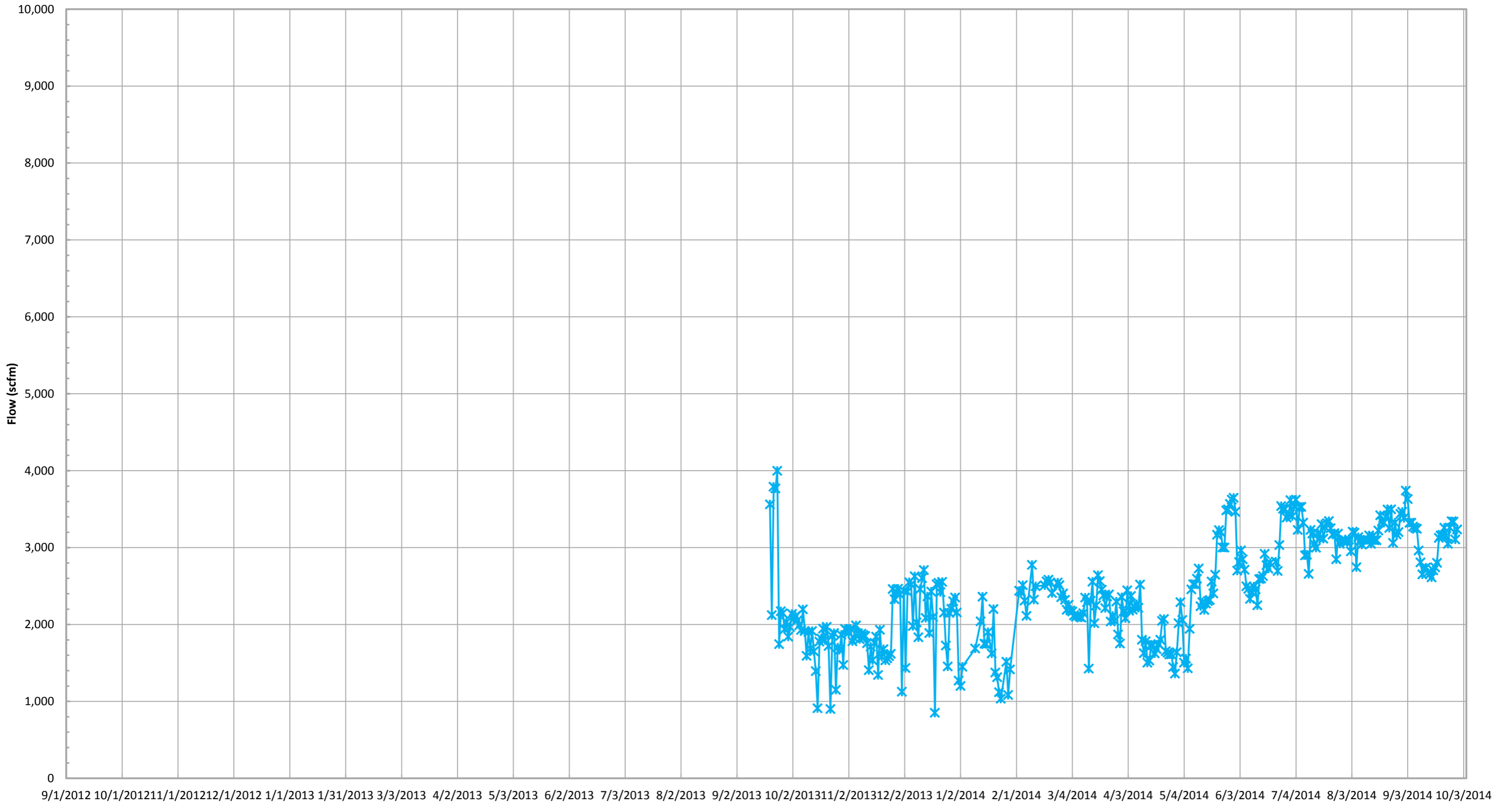
Candlestick Flare (FL-100) Flow (scfm)*



—*— Candlestick Flare (FL-100) Flow (scfm)*

*Flow is based on tabulated flow data collected daily.

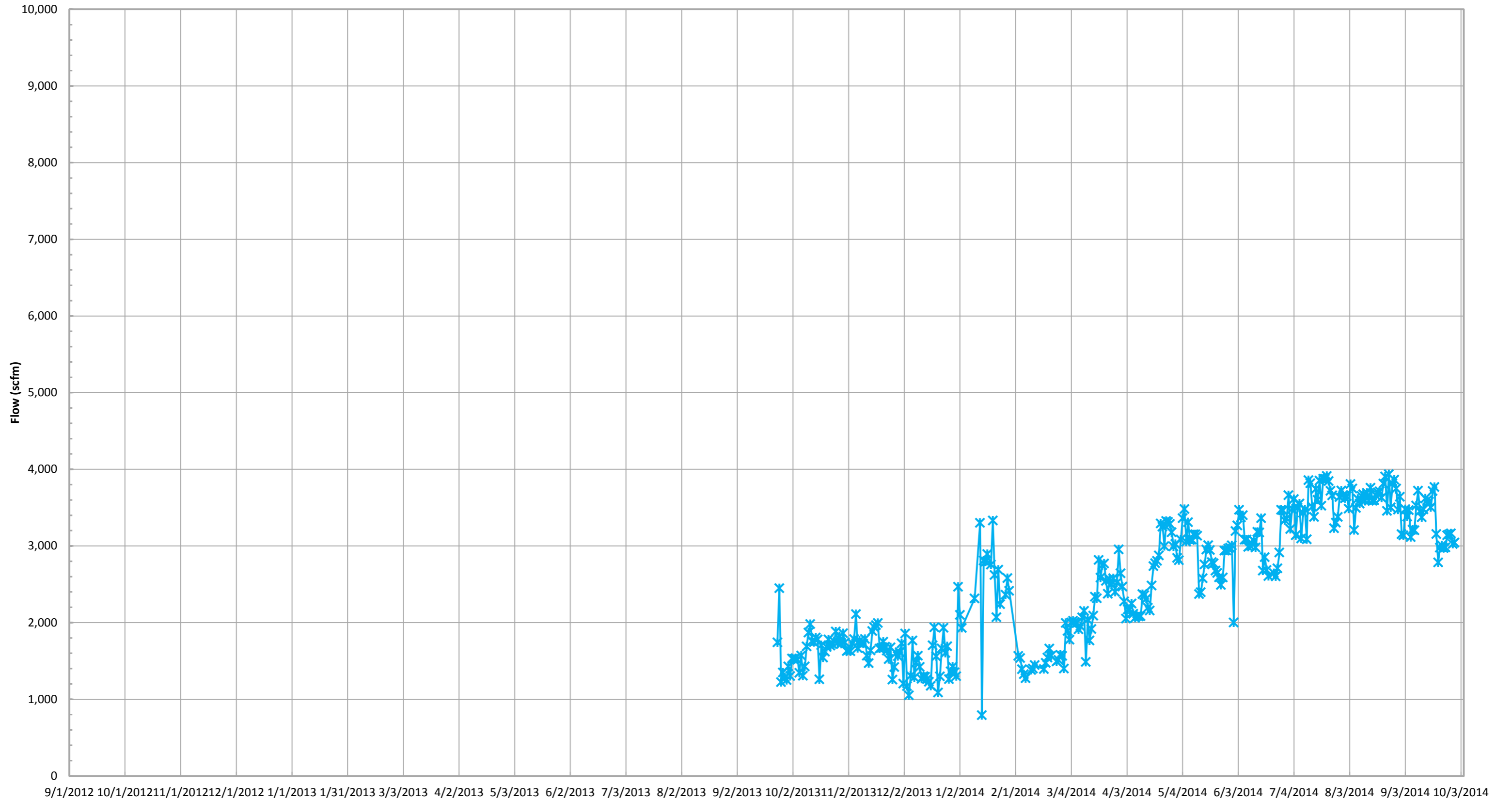
Candlestick Flare (FL-120) Flow (scfm)*



—* Candlestick Flare (FL-120) Flow (scfm)*

*Flow is based on tabulated flow data collected daily.

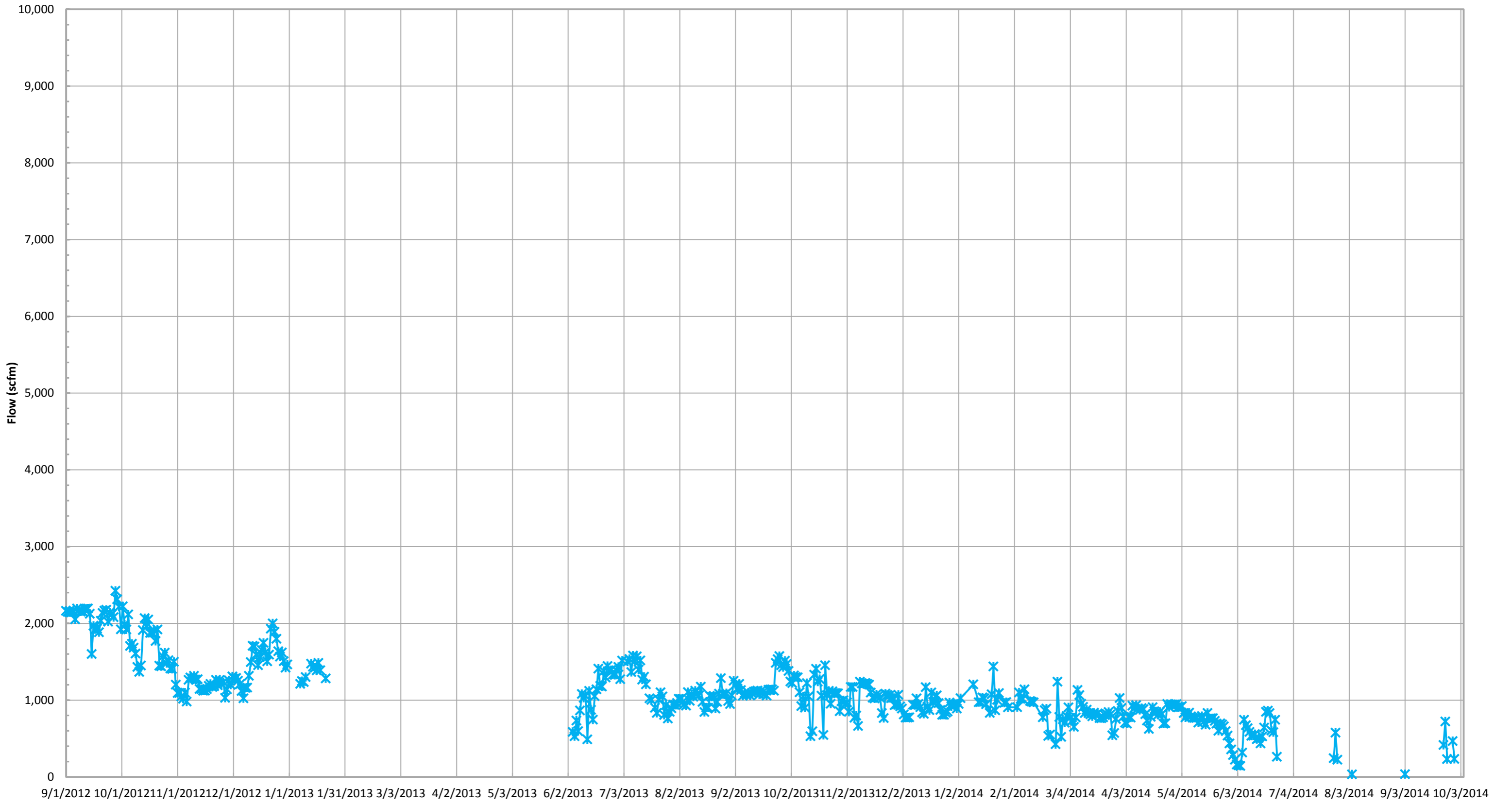
Candlestick Flare (FL-140) Flow (scfm)*



—x— Candlestick Flare (FL-140) Flow (scfm)*

*Flow is based on tabulated flow data collected daily.

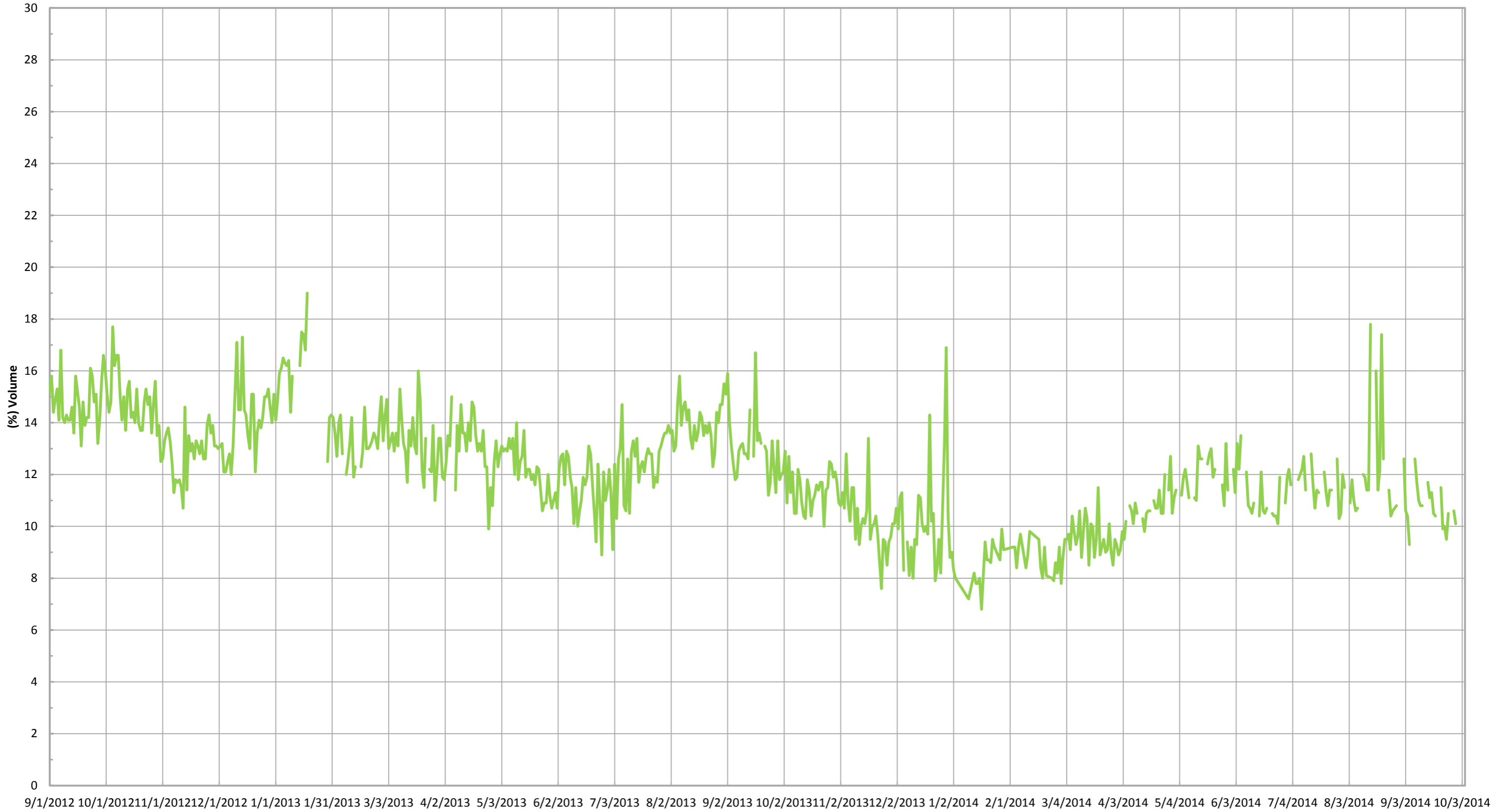
East Auxillary Candlestick Flare Flow (scfm)*



—*— East Auxillary Candlestick Flare Flow (scfm)*

*Flow is based on tabulated flow data collected daily.

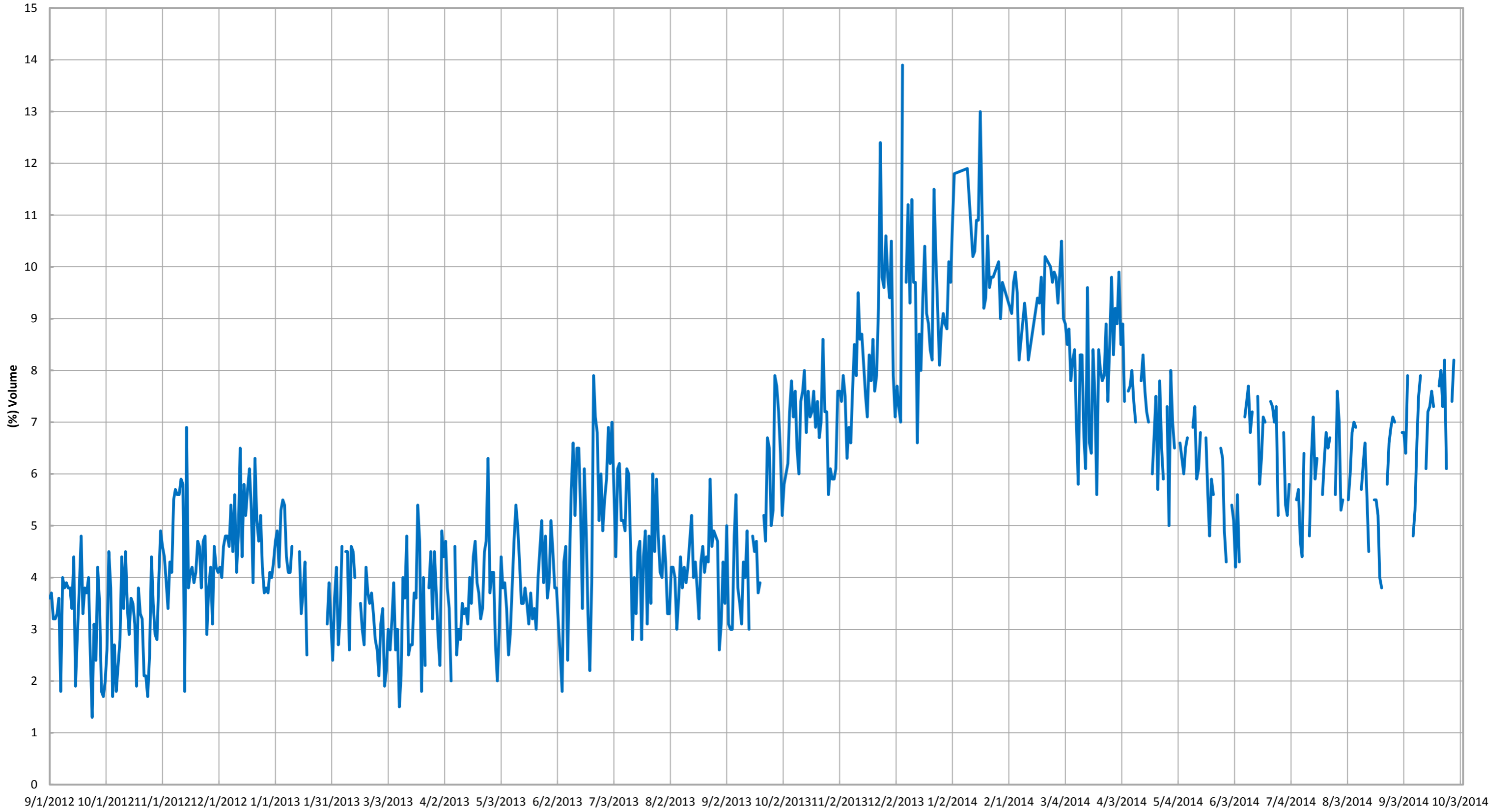
Combined Inlet Methane (GEM 2000)*



— Combined Inlet Methane (GEM 2000)*

*Gas data collected from GEM 2000 field monitoring instrument.

Combined Inlet Oxygen (GEM 2000)*



— Combined Inlet Oxygen (GEM 2000)*

*Gas data collected from GEM 2000 field monitoring instrument.