

Daily Flare Monitoring Data - Bridgeton Landfill
4/1/2013 - 9/30/2013

Date	Device Flow (scfm)						Total Flow (scfm)
	Enclosed Flare	Callidus Flare	Candlestick Flare (Flare Station #2)	Candlestick Flare (Flare Station #1)	Candlestick Flare (Flare Station #3)	E. Aux. Candlestick Flare	
4/1/2013	2,755	2,284	1,994				7,033
4/2/2013	2,982	2,109	1,655				6,746
4/3/2013	3,138	2,246	1,728				7,112
4/4/2013	3,320	2,173	2,008				7,501
4/5/2013	3,001	2,034	2,196				7,231
4/6/2013	2,976	1,776	1,889				6,641
4/7/2013							
4/8/2013	3,122	2,154	1,877				7,153
4/9/2013	2,849	2,001	2,156				7,006
4/10/2013	3,001	1,614	1,279				5,894
4/11/2013	2,719	1,561	1,335				5,615
4/12/2013	2,645	1,417	1,441				5,503
4/13/2013	3,344	1,504	1,259				6,107
4/14/2013	2,369	1,617	2,558				6,544
4/15/2013	2,225	1,654	2,135				6,014
4/16/2013	1,874	1,472	2,005				5,351
4/17/2013	1,889	1,454	2,413				5,756
4/18/2013	2,536	1,610	1,808				5,954
4/19/2013	2,741	1,558	2,032				6,331
4/20/2013	2,963	1,613	1,753				6,329
4/21/2013	3,109	1,614	1,773				6,496
4/22/2013	3,630	1,564	2,011				7,205
4/23/2013	3,202	1,600	1,660				6,462
4/24/2013	3,049	1,610	1,675				6,334
4/25/2013	3,014	1,585	1,687				6,286
4/26/2013	2,832	1,590	1,620				6,042
4/27/2013	3,526	1,590	1,029				6,145
4/28/2013	3,628	1,615	1,345				6,588
4/29/2013	3,506	1,562	1,982				7,050
4/30/2013	3,550	1,604	2,124				7,278

Daily Flare Monitoring Data - Bridgeton Landfill
4/1/2013 - 9/30/2013

Date	Device Flow (scfm)						Total Flow (scfm)
	Enclosed Flare	Callidus Flare	Candlestick Flare (Flare Station #2)	Candlestick Flare (Flare Station #1)	Candlestick Flare (Flare Station #3)	E. Aux. Candlestick Flare	
5/1/2013	1,693	1,516	2,168				5,377
5/2/2013	1,562	1,583	1,752				4,897
5/3/2013	1,697	1,620	1,779				5,096
5/4/2013	1,540	1,606	1,810				4,956
5/5/2013	1,740	1,548	1,707				4,995
5/6/2013	1,755	1,603	1,730				5,088
5/7/2013	1,720	1,687	2,235				5,642
5/8/2013	1,656	1,620	2,176				5,452
5/9/2013	1,611	1,374	2,110				5,095
5/10/2013	1,648	1,582	1,527				4,757
5/11/2013	1,663	1,546	1,642				4,851
5/12/2013	1,621	1,607	1,900				5,128
5/13/2013	1,643	1,564	1,810				5,017
5/14/2013	1,626	1,611	2,121				5,358
5/15/2013	1,640	1,598	1,920				5,158
5/16/2013	1,654	1,404	2,242				5,300
5/17/2013	1,648	1,582	2,121				5,351
5/18/2013	1,639	1,560	2,141				5,340
5/19/2013	1,666	1,595	2,375				5,636
5/20/2013	1,667	1,605	1,881				5,153
5/21/2013	1,649	1,596	2,112				5,357
5/22/2013	1,629	1,574	2,337				5,540
5/23/2013	1,662	1,577	2,214				5,453
5/24/2013	1,658	1,477	1,873				5,008
5/25/2013	1,673	1,539	2,007				5,219
5/26/2013	1,669	1,519	2,488				5,676
5/27/2013	1,676	1,510	2,601				5,787
5/28/2013	1,651	1,612	2,034				5,297
5/29/2013	1,614	1,610	2,321				5,545
5/30/2013	1,670	1,601	2,828				6,099
5/31/2013	1,591	1,596	2,741				5,928

Daily Flare Monitoring Data - Bridgeton Landfill
4/1/2013 - 9/30/2013

Date	Device Flow (scfm)						Total Flow (scfm)
	Enclosed Flare	Callidus Flare	Candlestick Flare (Flare Station #2)	Candlestick Flare (Flare Station #1)	Candlestick Flare (Flare Station #3)	E. Aux. Candlestick Flare	
6/1/2013	3,161	1,467	2,873				7,501
6/2/2013	3,642	1,544	2,245				7,431
6/3/2013	3,664	1,581	2,364				7,609
6/4/2013	3,451	1,490	2,713				7,654
6/5/2013	3,722	1,591	1,922			586	7,821
6/6/2013	3,696	1,592	1,918			529	7,735
6/7/2013	3,405	1,571	1,809			734	7,519
6/8/2013	3,544	1,553	2,592			596	8,285
6/9/2013	3,352	1,581	2,038			864	7,835
6/10/2013	3,691	1,623	1,589			1,079	7,982
6/11/2013	3,665	1,580	1,457			1,028	7,730
6/12/2013	3,651	1,546	2,110			1,056	8,363
6/13/2013	3,698	1,596	1,653			488	7,435
6/14/2013	3,558	1,620	1,214			1,119	7,511
6/15/2013	3,691	1,562	1,269			872	7,394
6/16/2013	3,502	1,608	2,105			745	7,960
6/17/2013	2,604	1,558	1,664			1,051	6,877
6/18/2013	3,401	1,605	1,496			1,141	7,643
6/19/2013	3,691	1,587	1,004			1,409	7,691
6/20/2013	3,769	1,608	1,196			1,184	7,757
6/21/2013	3,519	1,588	1,891			1,177	8,175
6/22/2013	3,864		2,301			1,380	7,545
6/23/2013	3,809		2,987			1,293	8,089
6/24/2013	3,497		3,046			1,443	7,986
6/25/2013	3,889		3,046			1,382	8,317
6/26/2013	3,803		2,725			1,391	7,919
6/27/2013	3,629		2,605			1,334	7,568
6/28/2013	3,853		2,817			1,326	7,996
6/29/2013	3,694		2,566			1,386	7,646
6/30/2013	3,694		2,911			1,432	8,037

Daily Flare Monitoring Data - Bridgeton Landfill
4/1/2013 - 9/30/2013

Date	Device Flow (scfm)						Total Flow (scfm)
	Enclosed Flare	Callidus Flare	Candlestick Flare (Flare Station #2)	Candlestick Flare (Flare Station #1)	Candlestick Flare (Flare Station #3)	E. Aux. Candlestick Flare	
7/1/2013	3,294		2,891			1,271	7,456
7/2/2013	3,309		2,708			1,514	7,531
7/3/2013	3,510		2,610				6,120
7/4/2013	3,496		2,901				6,397
7/5/2013	3,514		2,884			1,501	7,899
7/6/2013	3,891		2,544			1,535	7,970
7/7/2013	3,346		2,328			1,364	7,038
7/8/2013	3,796		2,392			1,580	7,768
7/9/2013	3,981		2,279			1,504	7,764
7/10/2013	3,960		2,004			1,570	7,534
7/11/2013	3,987		2,041			1,398	7,426
7/12/2013	3,921		2,195			1,516	7,632
7/13/2013	3,635		2,701			1,265	7,601
7/14/2013	3,325		2,188			1,305	6,818
7/15/2013	3,954		2,027			1,204	7,185
7/16/2013	3,740		1,383				5,123
7/17/2013	3,988	3,303	1,416			1,023	9,730
7/18/2013	3,986	3,255	1,066			1,003	9,310
7/19/2013	3,987		1,142				5,129
7/20/2013	3,988	2,929	957			900	8,774
7/21/2013	3,988	2,801	1,343			833	8,965
7/22/2013	3,988	2,960	1,512			1,007	9,467
7/23/2013	3,987	2,625	1,597			1,102	9,311
7/24/2013	3,990	2,942	1,609			1,047	9,588
7/25/2013	3,989	3,241	1,551			805	9,586
7/26/2013	3,991	3,092	1,612			936	9,631
7/27/2013	3,992	2,898	1,177			759	8,826
7/28/2013	3,994	3,141	949			846	8,930
7/29/2013	3,995	3,341	1,241			894	9,471
7/30/2013	3,981	2,984	801			939	8,705
7/31/2013	3,993	3,033	1,052			935	9,013

Daily Flare Monitoring Data - Bridgeton Landfill
4/1/2013 - 9/30/2013

Date	Device Flow (scfm)						Total Flow (scfm)
	Enclosed Flare	Callidus Flare	Candlestick Flare (Flare Station #2)	Candlestick Flare (Flare Station #1)	Candlestick Flare (Flare Station #3)	E. Aux. Candlestick Flare	
8/1/2013	3,992	3,180	1,210			962	9,344
8/2/2013	3,996	2,850	1,184			1,017	9,047
8/3/2013	3,991	2,869	1,218			1,014	9,092
8/4/2013	3,990	2,946	1,148			975	9,059
8/5/2013	3,998	3,011	1,138			946	9,093
8/6/2013	3,993	3,999	1,266			928	10,186
8/7/2013	3,991	3,999	1,286			1,103	10,379
8/8/2013	3,993	3,691	1,381			990	10,055
8/9/2013	3,991	3,951	1,158			1,074	10,174
8/10/2013	3,991	3,957	1,348			1,043	10,339
8/11/2013	3,984	3,960	1,288			1,122	10,354
8/12/2013	3,991	3,833	1,201			1,080	10,105
8/13/2013	4,003	3,661	1,022			1,061	9,747
8/14/2013	3,997	3,038	1,101			1,174	9,310
8/15/2013	3,996	3,723	1,172			976	9,867
8/16/2013	4,001	3,601	1,141			845	9,588
8/17/2013	3,810	3,999	1,190			903	9,902
8/18/2013	4,004	3,970	1,318			902	10,194
8/19/2013	4,000	3,990	1,111			1,055	10,156
8/20/2013	4,080	3,711	1,346			1,043	10,180
8/21/2013	4,000	3,506	960			1,048	9,514
8/22/2013	4,150	3,527	1,372			888	9,937
8/23/2013	4,006	3,396	1,268			977	9,647
8/24/2013	4,020	3,222	1,272			1,083	9,597
8/25/2013	4,016	3,607	1,335			1,286	10,244
8/26/2013	4,061	3,295	1,302			1,080	9,738
8/27/2013	4,137	3,248	1,263			1,071	9,719
8/28/2013	4,016	2,965	1,230			1,089	9,300
8/29/2013	4,036	3,739	1,277			989	10,041
8/30/2013	4,028	3,294	1,071			947	9,340
8/31/2013	3,983	2,961	1,093			1,062	9,099

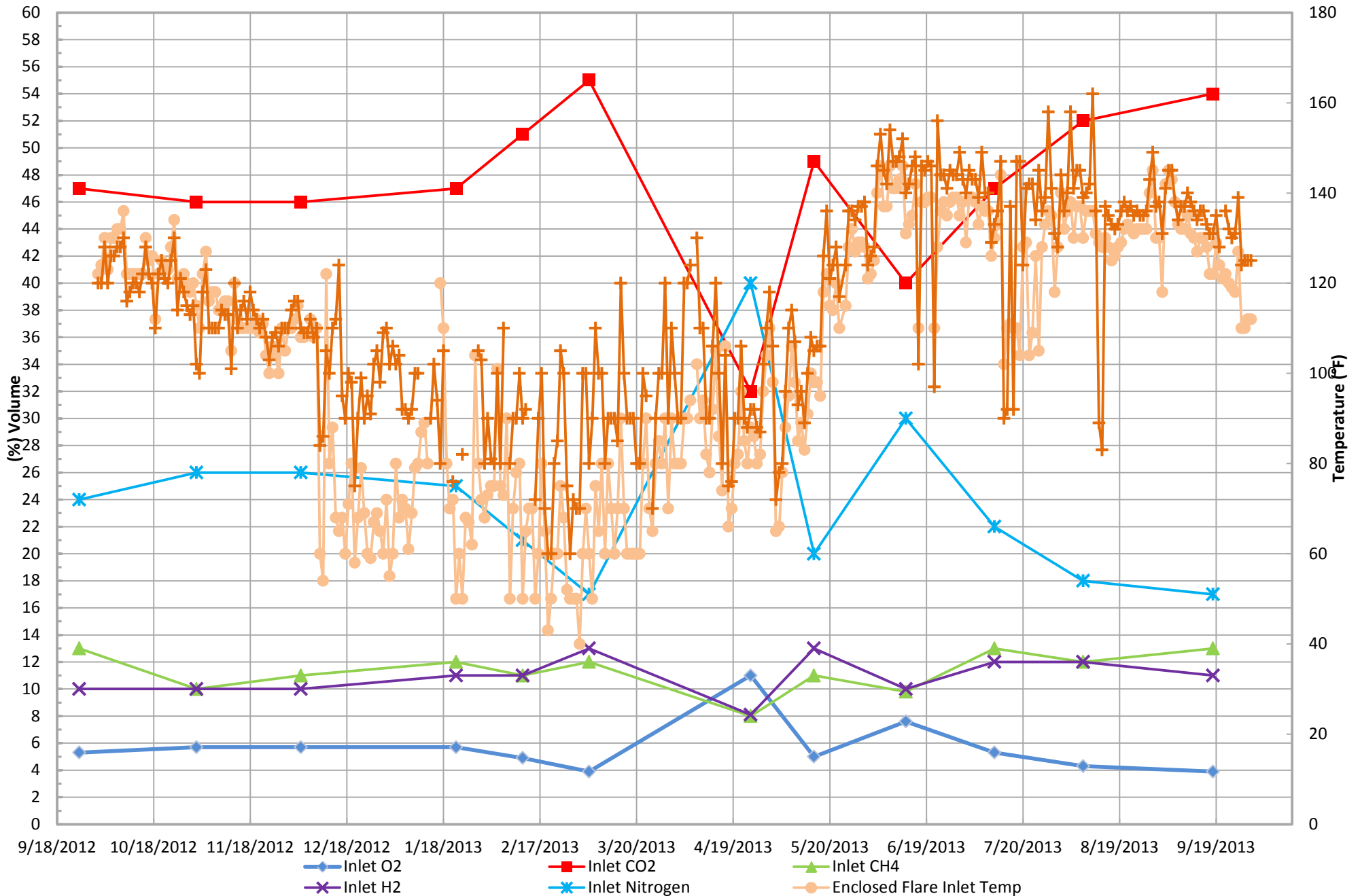
Daily Flare Monitoring Data - Bridgeton Landfill
4/1/2013 - 9/30/2013

Date	Device Flow (scfm)						Total Flow (scfm)
	Enclosed Flare	Callidus Flare	Candlestick Flare (Flare Station #2)	Candlestick Flare (Flare Station #1)	Candlestick Flare (Flare Station #3)	E. Aux. Candlestick Flare	
9/1/2013	4,011	3,994	1,001			1,252	10,258
9/2/2013	3,992	3,992	975			1,205	10,164
9/3/2013	3,992	3,946	760			1,150	9,848
9/4/2013	3,994	3,750	615			1,211	9,570
9/5/2013	3,994	3,895	572			1,130	9,591
9/6/2013	3,990	3,550	700			1,055	9,295
9/7/2013	3,994	3,705	737			1,092	9,528
9/8/2013	3,993	3,522	772			1,065	9,352
9/9/2013	3,994	3,942	713			1,098	9,747
9/10/2013	3,993	3,335	855			1,060	9,243
9/11/2013	3,994	3,409	841			1,088	9,332
9/12/2013	3,998	3,819	749			1,110	9,676
9/13/2013	3,996	3,619	749			1,115	9,479
9/14/2013	4,003	3,261	741			1,123	9,128
9/15/2013	4,014	3,350	788			1,073	9,225
9/16/2013	4,017	3,010	749			1,122	8,898
9/17/2013	4,021	3,294	917			1,102	9,334
9/18/2013	4,006	3,423	801			1,082	9,312
9/19/2013	3,996	3,702	772			1,058	9,528
9/20/2013		3,251	821	3,561		1,135	8,768
9/21/2013		2,391	855	2,122		1,139	6,507
9/22/2013		1,800	705	3,790		1,140	7,435
9/23/2013		1,469	701	3,769		1,122	7,061
9/24/2013			637	3,997	1,742	1,485	7,861
9/25/2013			849	1,744	2,449	1,533	6,575
9/26/2013			1,724	2,171	1,224	1,573	6,692
9/27/2013			1,209	2,145	1,348	1,453	6,155
9/28/2013			1,327	1,939	1,283	1,427	5,976
9/29/2013			2,833	2,030	1,249	1,512	7,624
9/30/2013			1,270	1,841	1,427	1,471	6,009

September Notes:

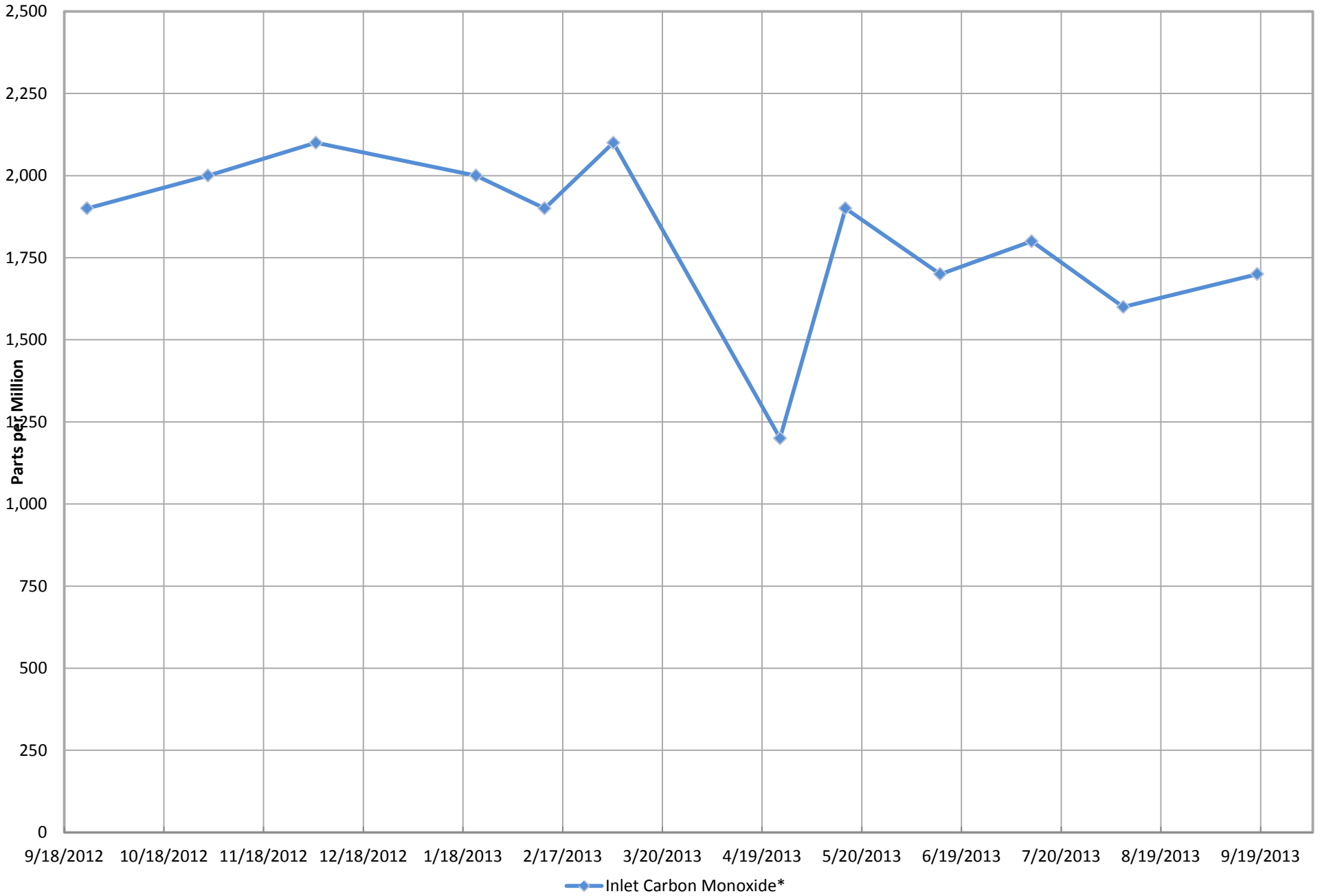
1. The Enclosed Flare (John Zink) was decommissioned on September 24, 2013
2. The Callidus Flare was decommissioned on September 20, 2013
3. New Flare Station #3 came online on September 20, 2013
4. New Flare Station #1 came online on September 24, 2013
5. Existing Candlestick Flare is now designated as Flare Station #2

Inlet Gas and Temperature*



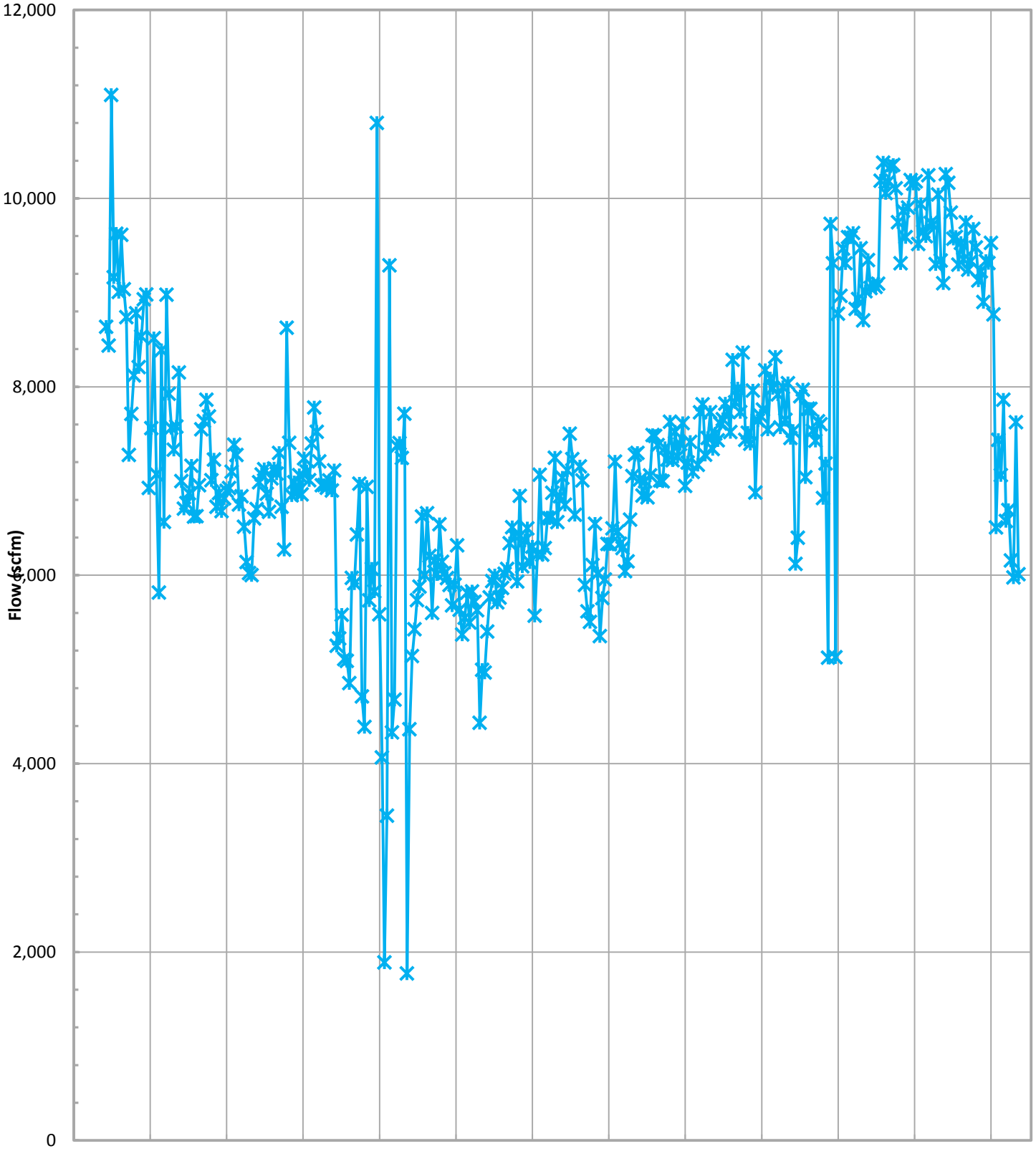
*Gas data collected from Laboratory Reports. Temperature data

Inlet Carbon Monoxide*



*Data collected from

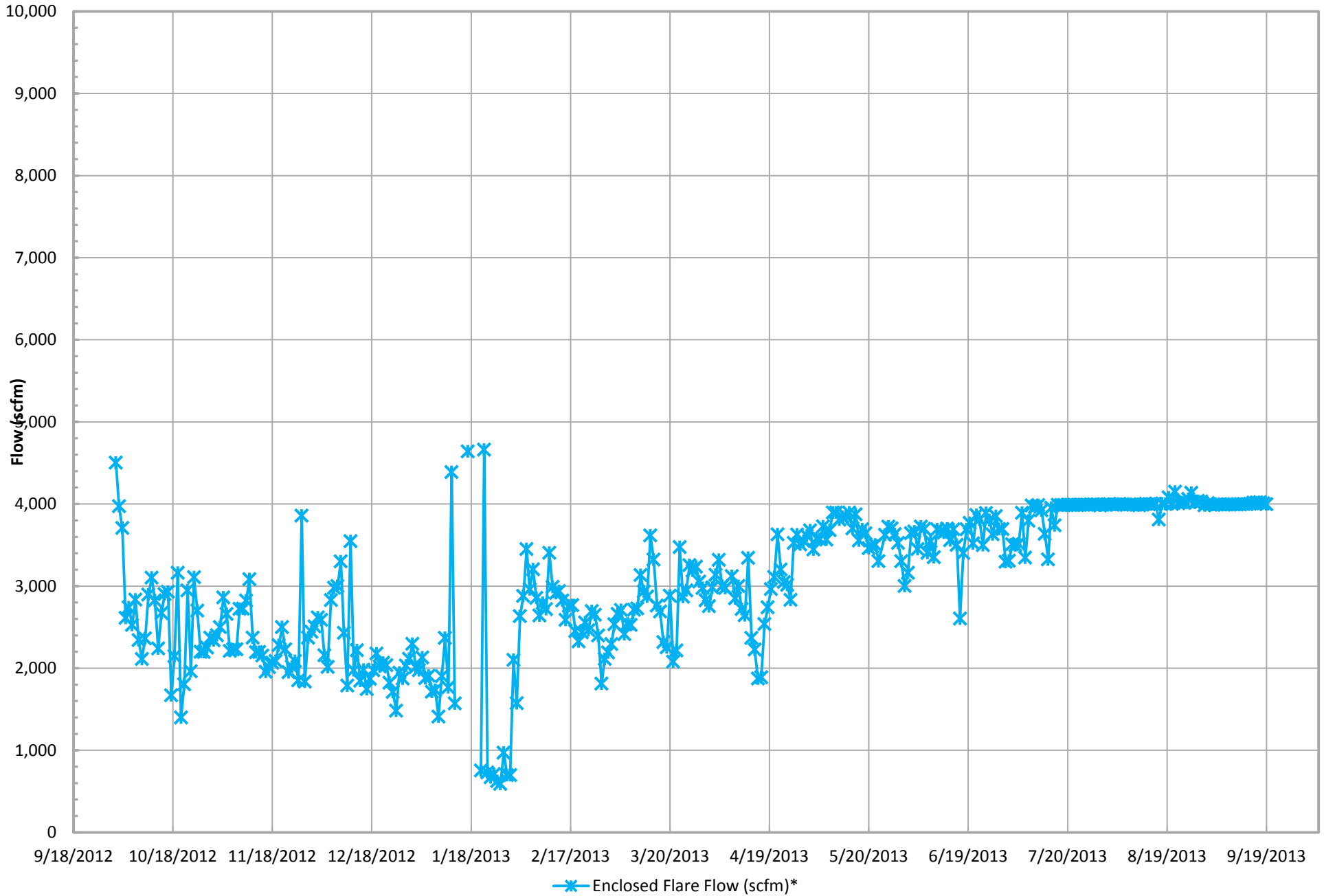
Total Combined Flow (scfm)*



—x— Total Combined Flow (scfm)*

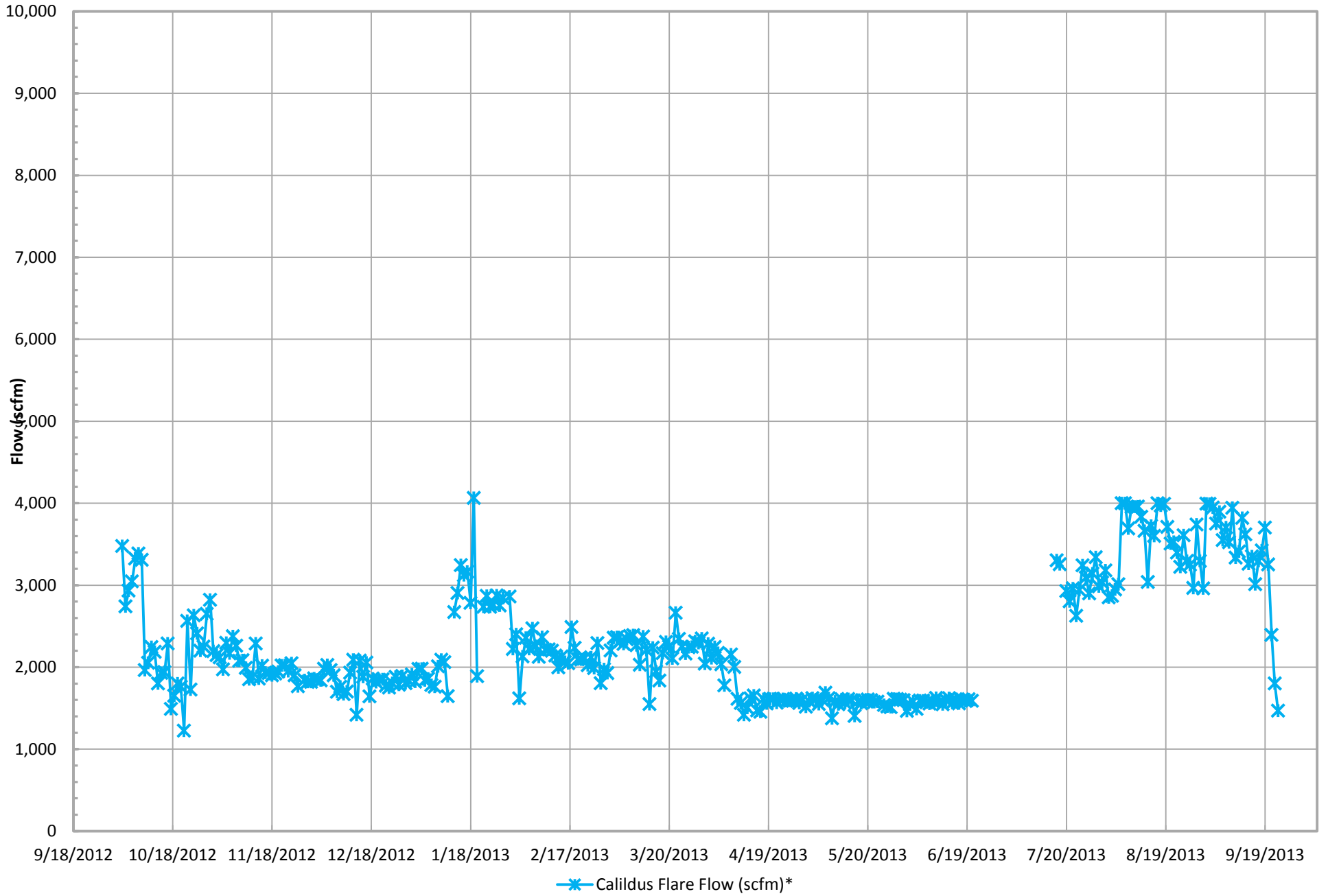
*Combined flow is based on

Enclosed Flare Flow (scfm)*



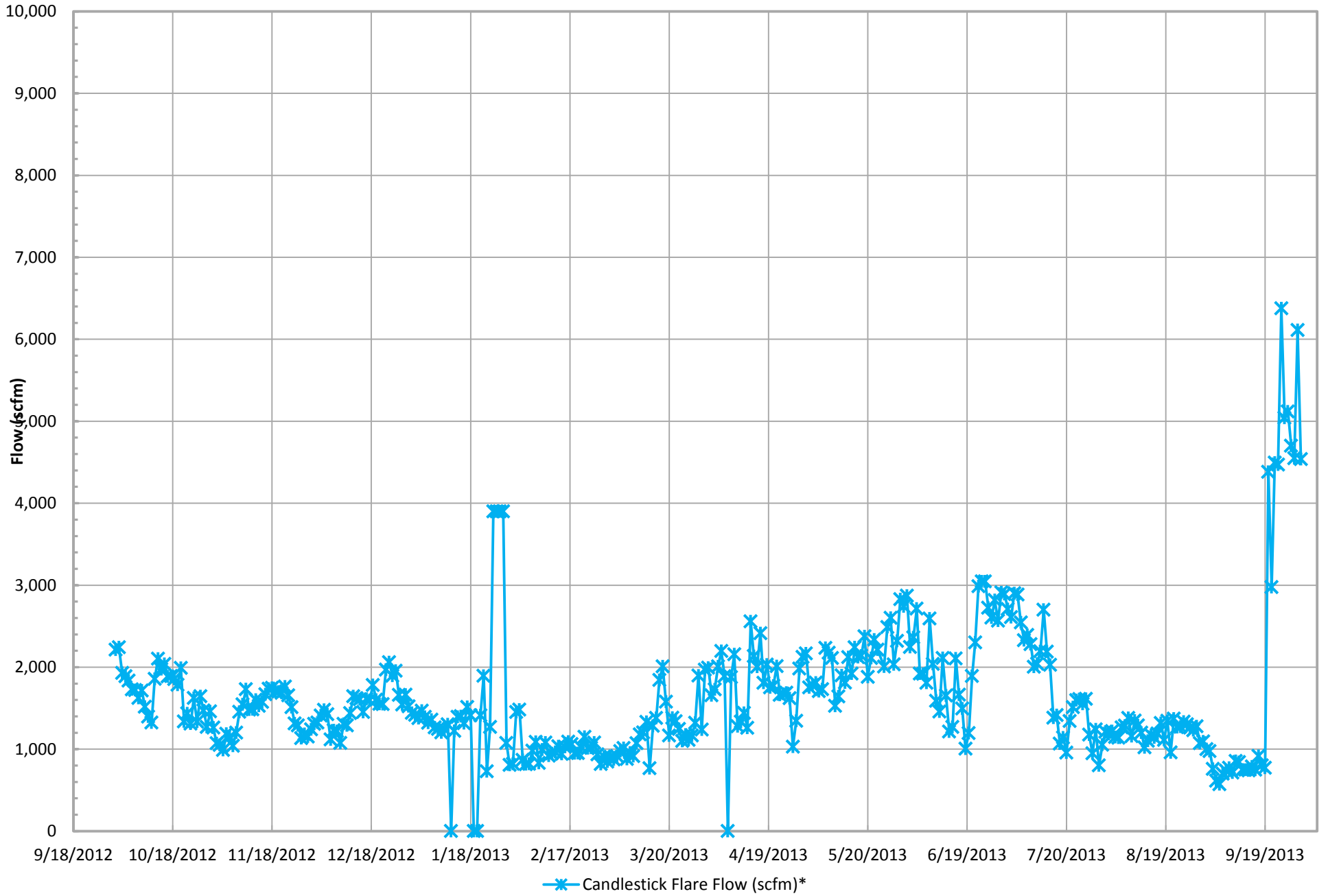
*Flow is based on tabulated flow data collected

Callidus Flare Flow (scfm)*



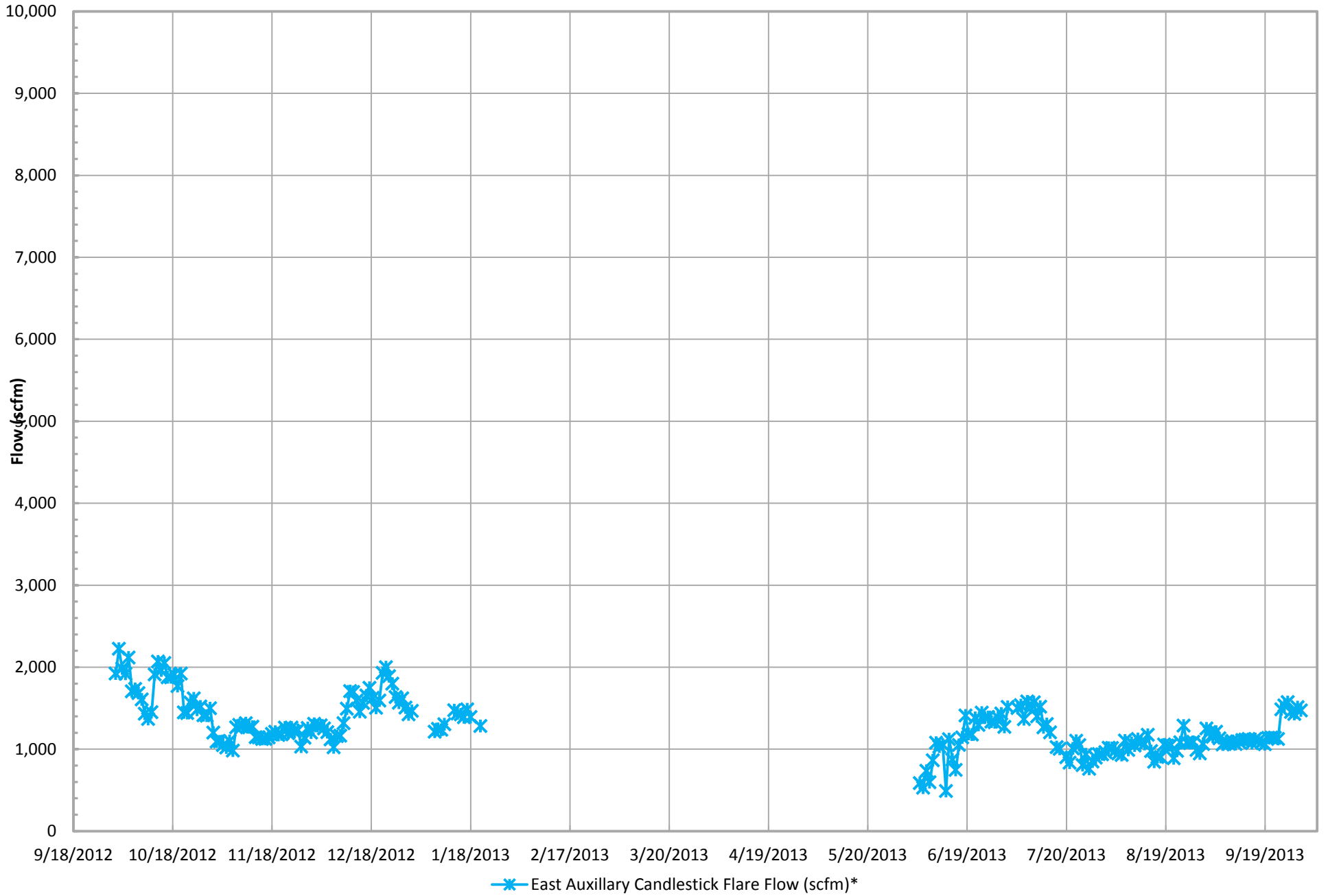
*Flow is based on tabulated flow data collected

Candlestick Flare Flow (scfm)*



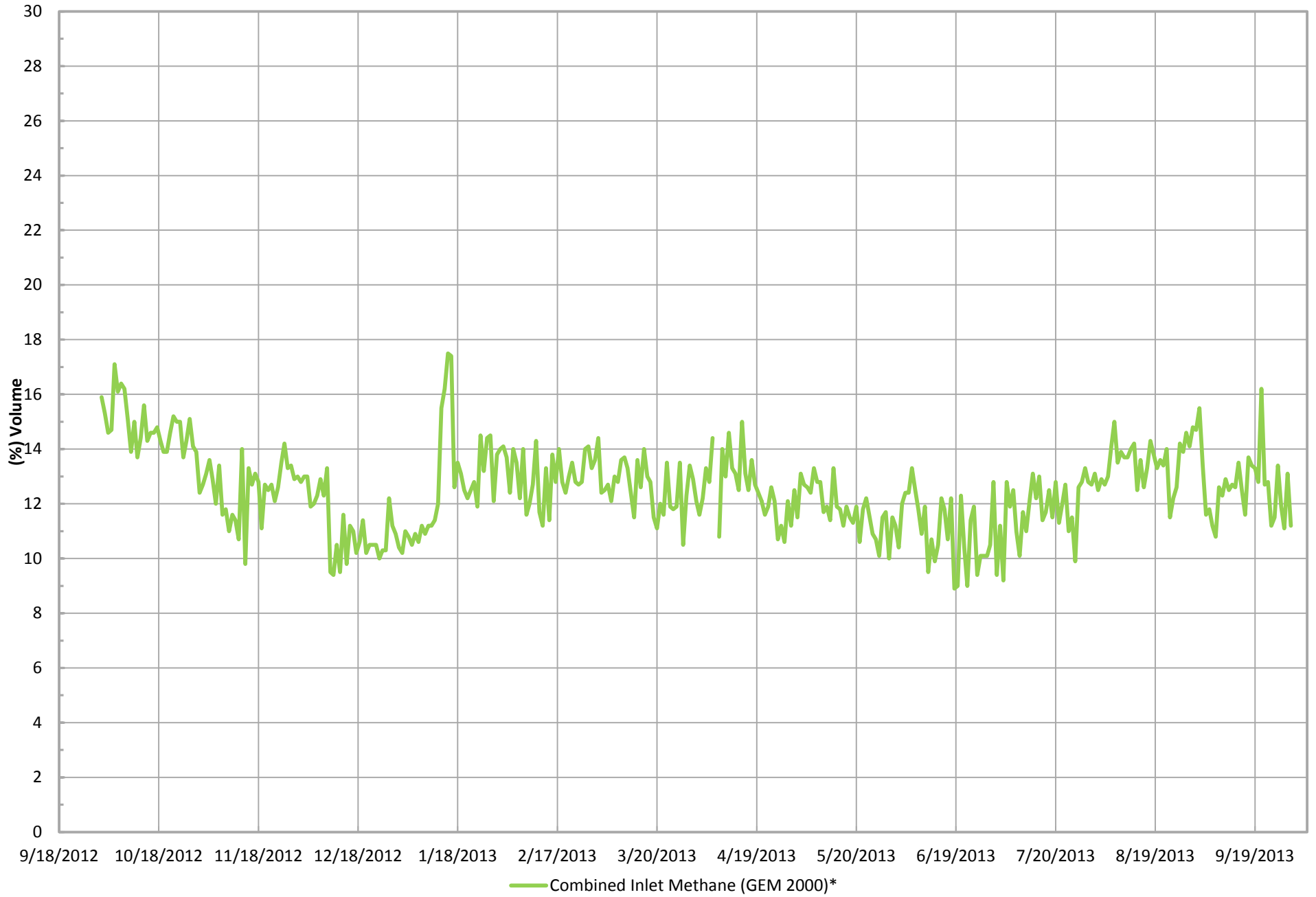
*Flow is based on tabulated flow data collected

East Auxillary Candlestick Flare Flow (scfm)*



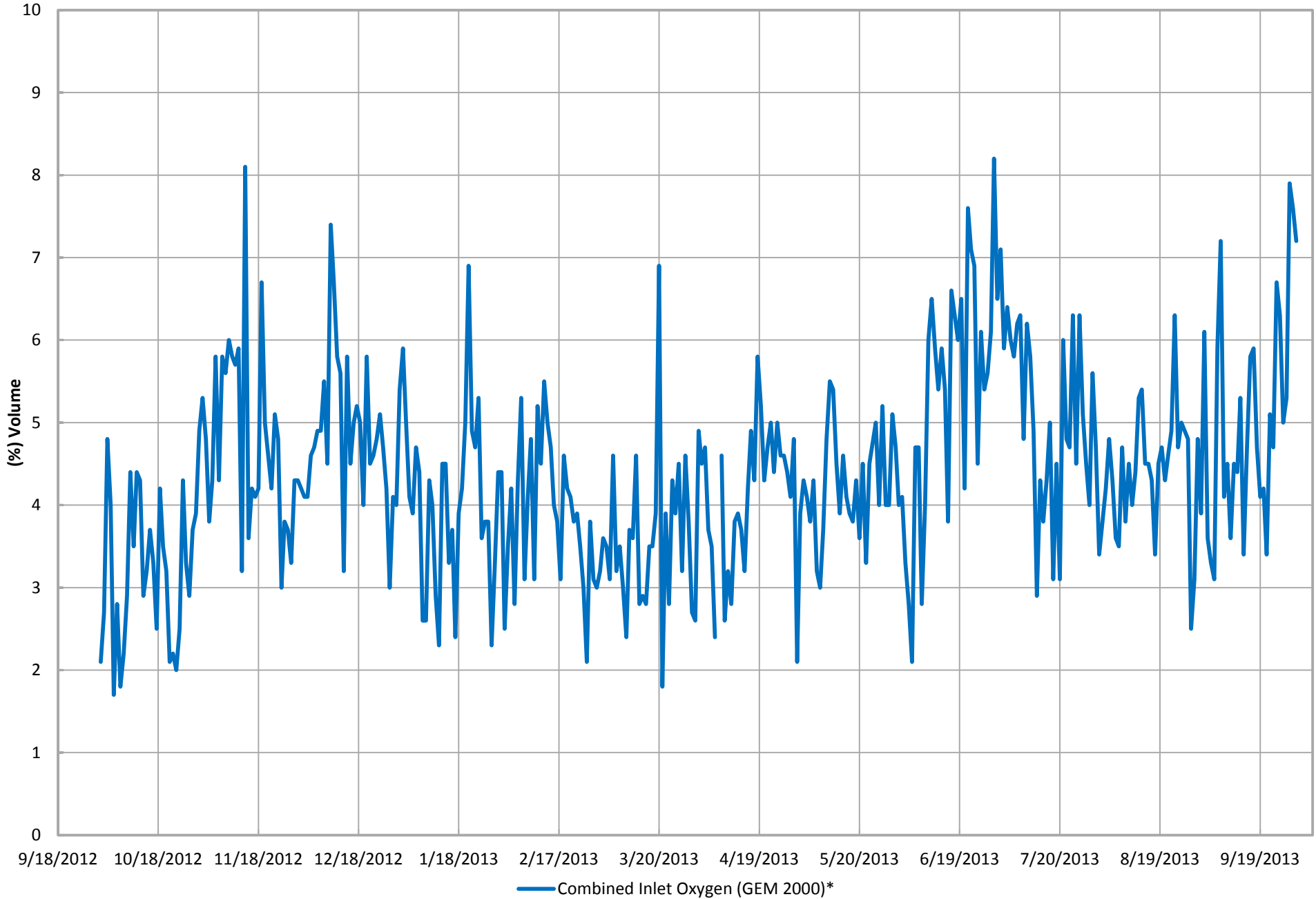
*Flow is based on tabulated flow data collected

Combined Inlet Methane (GEM 2000)*



*Gas data collected from GEM 2000

Combined Inlet Oxygen (GEM 2000)*



*Gas data collected from GEM 2000