

Daily Flare Monitoring Data - Bridgeton Landfill
8/7//2012 - 11/30/2014

Date	Average Device Flow (scfm)				Total Avg. Flow (scfm)
	Candlestick Flare (FL-100)	Candlestick Flare (FL-140)	Candlestick Flare (FL-120)	E. Aux. Candlestick Flare	
8/7/2012	1,867				5,689
8/8/2012	1,886				5,802
8/9/2012	1,885				5,603
8/10/2012	1,897				5,679
8/11/2012	1,886				5,483
8/12/2012	1,770				4,770
8/13/2012	1,790				5,460
8/14/2012	1,800				5,650
8/15/2012	1,771				5,223
8/16/2012	1,766				5,860
8/17/2012	1,738				5,702
8/18/2012	1,791				5,687
8/19/2012	1,753				5,433
8/20/2012	1,731				5,481
8/21/2012	1,773				5,592
8/22/2012	1,835				5,482
8/23/2012	1,869				5,723
8/24/2012	1,976				5,998
8/25/2012	1,967				5,922
8/26/2012	2,009				5,934
8/27/2012	1,960				5,871
8/28/2012	1,993				5,990
8/29/2012	2,208				6,109
8/30/2012	2,192				6,094
8/31/2012	2,169				6,243
9/1/2012	2,209				6,260
9/2/2012	2,159				6,143
9/3/2012	2,144				6,294
9/4/2012	2,156				6,248
9/5/2012	2,174				6,149
9/6/2012	2,144				6,322
9/7/2012	2,170				6,527
9/8/2012	2,192				6,143
9/9/2012	2,178				6,313
9/10/2012	2,154				6,296
9/11/2012	2,203				6,202
9/12/2012	2,175				6,331
9/13/2012	2,199				5,838
9/14/2012	2,194				5,847
9/15/2012	2,093				6,743
9/16/2012	1,980				6,087
9/17/2012	1,934				6,384
9/18/2012	2,003				6,599
9/19/2012	1,902				6,337

Daily Flare Monitoring Data - Bridgeton Landfill
8/7//2012 - 11/30/2014

Date	Average Device Flow (scfm)				Total Avg. Flow (scfm)
	Candlestick Flare (FL-100)	Candlestick Flare (FL-140)	Candlestick Flare (FL-120)	E. Aux. Candlestick Flare	
9/20/2012	1,859				6,493
9/21/2012	2,139				6,142
9/22/2012	2,133				5,909
9/23/2012	2,167				5,739
9/24/2012	1,316				6,102
9/25/2012	2,217				6,968
9/26/2012	2,158				6,611
9/27/2012	2,194				6,499
9/28/2012	2,314				5,232
9/29/2012	2,306				6,506
9/30/2012	2,313				6,173
10/1/2012	2,212				6,715
10/2/2012	2,242				6,215
10/3/2012	1,930				9,113
10/4/2012	1,890				7,242
10/5/2012	1,836				7,508
10/6/2012	1,729				7,300
10/7/2012	1,719				7,878
10/8/2012	1,625				7,353
10/9/2012	1,715				7,134
10/10/2012	1,516				5,843
10/11/2012	1,397				6,344
10/12/2012	1,324				6,671
10/13/2012	1,856				6,868
10/14/2012	2,102				6,141
10/15/2012	1,975				6,575
10/16/2012	2,040				6,880
10/17/2012	1,885				7,103
10/18/2012	1,892				5,049
10/19/2012	1,855				5,650
10/20/2012	1,785				6,745
10/21/2012	1,990				5,150
10/22/2012	1,337				4,366
10/23/2012	1,436				6,948
10/24/2012	1,310				4,995
10/25/2012	1,623				7,360
10/26/2012	1,334				6,446
10/27/2012	1,645				6,045
10/28/2012	1,472				5,919
10/29/2012	1,270				6,170
10/30/2012	1,460				6,652
10/31/2012	1,261				5,795
11/1/2012	1,071				5,616
11/2/2012	1,050				5,670

Daily Flare Monitoring Data - Bridgeton Landfill
8/7//2012 - 11/30/2014

Date	Average Device Flow (scfm)				Total Avg. Flow (scfm)
	Candlestick Flare (FL-100)	Candlestick Flare (FL-140)	Candlestick Flare (FL-120)	E. Aux. Candlestick Flare	
11/3/2012	988				5,821
11/4/2012	1,188				6,144
11/5/2012	1,147				5,524
11/6/2012	1,040				5,645
11/7/2012	1,200				5,690
11/8/2012	1,456				6,254
11/9/2012	1,547				6,355
11/10/2012	1,732				6,547
11/11/2012	1,483				6,419
11/12/2012	1,484				5,734
11/13/2012	1,601				6,084
11/14/2012	1,526				5,583
11/15/2012	1,576				5,749
11/16/2012	1,669				5,556
11/17/2012	1,735				5,673
11/18/2012	1,747				5,712
11/19/2012	1,705				5,713
11/20/2012	1,701				5,927
11/21/2012	1,685				6,205
11/22/2012	1,762				6,013
11/23/2012	1,655				5,556
11/24/2012	1,512				5,575
11/25/2012	1,312				5,300
11/26/2012	1,289				4,906
11/27/2012	1,134				4,992
11/28/2012	1,185				4,859
11/29/2012	1,153				5,343
11/30/2012	1,240				5,500
12/1/2012	1,307				5,677
12/2/2012	1,323				5,788
12/3/2012	1,409				5,836
12/4/2012	1,478				5,614
12/5/2012	1,425				5,466
12/6/2012	1,118				5,911
12/7/2012	1,230				6,110
12/8/2012	1,220				5,920
12/9/2012	1,075				6,135
12/10/2012	1,308				5,407
12/11/2012	1,289				4,776
12/12/2012	1,440				6,919
12/13/2012	1,644				5,707
12/14/2012	1,620				5,254
12/15/2012	1,607				5,532
12/16/2012	1,451				5,313

Daily Flare Monitoring Data - Bridgeton Landfill
8/7//2012 - 11/30/2014

Date	Average Device Flow (scfm)				Total Avg. Flow (scfm)
	Candlestick Flare (FL-100)	Candlestick Flare (FL-140)	Candlestick Flare (FL-120)	E. Aux. Candlestick Flare	
12/17/2012	1,612				5,409
12/18/2012	1,597				5,110
12/19/2012	1,782				5,617
12/20/2012	1,602				5,596
12/21/2012	1,551				5,416
12/22/2012	1,550				5,466
12/23/2012	1,969				5,780
12/24/2012	2,059				5,631
12/25/2012	1,895				5,409
12/26/2012	1,956				5,319
12/27/2012	1,662				5,392
12/28/2012	1,543				5,307
12/29/2012	1,664				5,499
12/30/2012	1,523				5,476
12/31/2012	1,442				5,647
1/1/2013	1,418				5,251
1/2/2013	1,378				5,329
1/3/2013	1,468				5,578
1/4/2013	1,393				5,109
1/5/2013	1,321				5,089
1/6/2013	1,358				4,852
1/7/2013	1,265			1,211	5,971
1/8/2013	1,247			1,247	5,913
1/9/2013	1,203			1,234	6,429
1/10/2013	1,243			1,301	6,971
1/11/2013	1,302				4,713
1/12/2013					4,388
1/13/2013	1,221			1,474	6,936
1/14/2013	1,394			1,434	5,732
1/15/2013	1,401			1,422	6,068
1/16/2013	1,316			1,388	5,826
1/17/2013	1,514			1,484	10,800
1/18/2013	1,413			1,389	5,584
1/19/2013					4,064
1/20/2013					1,888
1/21/2013	1,411			1,282	3,445
1/22/2013	1,894				9,289
1/23/2013	730				4,330
1/24/2013	1,271				4,677
1/25/2013	3,900				7,369
1/26/2013	3,901				7,401
1/27/2013	3,901				7,243
1/28/2013	3,900				7,714
1/29/2013	1,074				1,771

Daily Flare Monitoring Data - Bridgeton Landfill
8/7//2012 - 11/30/2014

Date	Average Device Flow (scfm)				Total Avg. Flow (scfm)
	Candlestick Flare (FL-100)	Candlestick Flare (FL-140)	Candlestick Flare (FL-120)	E. Aux. Candlestick Flare	
1/30/2013	806				4,365
1/31/2013	820				5,140
2/1/2013	#REF!				#REF!
2/2/2013	#REF!				#REF!
2/3/2013	#REF!				#REF!
2/4/2013	#REF!				#REF!
2/5/2013	#REF!				#REF!
2/6/2013	#REF!				#REF!
2/7/2013	#REF!				#REF!
2/8/2013	#REF!				#REF!
2/9/2013	#REF!				#REF!
2/10/2013	#REF!				#REF!
2/11/2013	#REF!				#REF!
2/12/2013	#REF!				#REF!
2/13/2013	#REF!				#REF!
2/14/2013	#REF!				#REF!
2/15/2013	#REF!				#REF!
2/16/2013	#REF!				#REF!
2/17/2013	#REF!				#REF!
2/18/2013	#REF!				#REF!
2/19/2013	#REF!				#REF!
2/20/2013	#REF!				#REF!
2/21/2013	#REF!				#REF!
2/22/2013	#REF!				#REF!
2/23/2013	#REF!				#REF!
2/24/2013	#REF!				#REF!
2/25/2013	#REF!				#REF!
2/26/2013	#REF!				#REF!
2/27/2013	#REF!				#REF!
2/28/2013	#REF!				#REF!
3/1/2013	848				4,966
3/2/2013	906				5,401
3/3/2013	874				5,764
3/4/2013	913				5,937
3/5/2013	976				5,998
3/6/2013	1,012				5,709
3/7/2013	879				5,761
3/8/2013	957				5,863
3/9/2013	915				6,015
3/10/2013	1,073				6,065
3/11/2013	1,178				6,339
3/12/2013	1,202				6,508
3/13/2013	1,332				6,412
3/14/2013	768				5,932

Daily Flare Monitoring Data - Bridgeton Landfill
8/7//2012 - 11/30/2014

Date	Average Device Flow (scfm)				Total Avg. Flow (scfm)
	Candlestick Flare (FL-100)	Candlestick Flare (FL-140)	Candlestick Flare (FL-120)	E. Aux. Candlestick Flare	
3/15/2013	1,284				6,842
3/16/2013	1,381				6,091
3/17/2013	1,842				6,368
3/18/2013	2,009				6,496
3/19/2013	1,578				6,137
3/20/2013	1,167				6,301
3/21/2013	1,383				5,569
3/22/2013	1,339				6,219
3/23/2013	1,247				7,066
3/24/2013	1,099				6,216
3/25/2013	1,177				6,288
3/26/2013	1,112				6,610
3/27/2013	1,167				6,604
3/28/2013	1,322				6,873
3/29/2013	1,898				7,246
3/30/2013	1,238				6,562
3/31/2013	1,970				6,837
4/1/2013	1,994				7,033
4/2/2013	1,655				6,746
4/3/2013	1,728				7,112
4/4/2013	2,008				7,501
4/5/2013	2,196				7,231
4/6/2013	1,889				6,641
4/7/2013					
4/8/2013	1,877				7,153
4/9/2013	2,156				7,006
4/10/2013	1,279				5,894
4/11/2013	1,335				5,615
4/12/2013	1,441				5,503
4/13/2013	1,259				6,107
4/14/2013	2,558				6,544
4/15/2013	2,135				6,014
4/16/2013	2,005				5,351
4/17/2013	2,413				5,756
4/18/2013	1,808				5,954
4/19/2013	2,032				6,331
4/20/2013	1,753				6,329
4/21/2013	1,773				6,496
4/22/2013	2,011				7,205
4/23/2013	1,660				6,462
4/24/2013	1,675				6,334
4/25/2013	1,687				6,286
4/26/2013	1,620				6,042
4/27/2013	1,029				6,145

Daily Flare Monitoring Data - Bridgeton Landfill
8/7//2012 - 11/30/2014

Date	Average Device Flow (scfm)				Total Avg. Flow (scfm)
	Candlestick Flare (FL-100)	Candlestick Flare (FL-140)	Candlestick Flare (FL-120)	E. Aux. Candlestick Flare	
4/28/2013	1,345				6,588
4/29/2013	1,982				7,050
4/30/2013	2,124				7,278

Daily Flare Monitoring Data - Bridgeton Landfill
8/7//2012 - 11/30/2014

Date	Average Device Flow (scfm)				Total Avg. Flow (scfm)
	Candlestick Flare (FL-100)	Candlestick Flare (FL-140)	Candlestick Flare (FL-120)	E. Aux. Candlestick Flare	
5/1/2013	2,168				5,377
5/2/2013	1,752				4,897
5/3/2013	1,779				5,096
5/4/2013	1,810				4,956
5/5/2013	1,707				4,995
5/6/2013	1,730				5,088
5/7/2013	2,235				5,642
5/8/2013	2,176				5,452
5/9/2013	2,110				5,095
5/10/2013	1,527				4,757
5/11/2013	1,642				4,851
5/12/2013	1,900				5,128
5/13/2013	1,810				5,017
5/14/2013	2,121				5,358
5/15/2013	1,920				5,158
5/16/2013	2,242				5,300
5/17/2013	2,121				5,351
5/18/2013	2,141				5,340
5/19/2013	2,375				5,636
5/20/2013	1,881				5,153
5/21/2013	2,112				5,357
5/22/2013	2,337				5,540
5/23/2013	2,214				5,453
5/24/2013	1,873				5,008
5/25/2013	2,007				5,219
5/26/2013	2,488				5,676
5/27/2013	2,601				5,787
5/28/2013	2,034				5,297
5/29/2013	2,321				5,545
5/30/2013	2,828				6,099
5/31/2013	2,741				5,928

Daily Flare Monitoring Data - Bridgeton Landfill
8/7//2012 - 11/30/2014

Date	Average Device Flow (scfm)				Total Avg. Flow (scfm)
	Candlestick Flare (FL-100)	Candlestick Flare (FL-140)	Candlestick Flare (FL-120)	E. Aux. Candlestick Flare	
6/1/2013	2,873				7,501
6/2/2013	2,245				7,431
6/3/2013	2,364				7,609
6/4/2013	2,713				7,654
6/5/2013	1,922			586	7,821
6/6/2013	1,918			529	7,735
6/7/2013	1,809			734	7,519
6/8/2013	2,592			596	8,285
6/9/2013	2,038			864	7,835
6/10/2013	1,589			1,079	7,982
6/11/2013	1,457			1,028	7,730
6/12/2013	2,110			1,056	8,363
6/13/2013	1,653			488	7,435
6/14/2013	1,214			1,119	7,511
6/15/2013	1,269			872	7,394
6/16/2013	2,105			745	7,960
6/17/2013	1,664			1,051	6,877
6/18/2013	1,496			1,141	7,643
6/19/2013	1,004			1,409	7,691
6/20/2013	1,196			1,184	7,757
6/21/2013	1,891			1,177	8,175
6/22/2013	2,301			1,380	7,545
6/23/2013	2,987			1,293	8,089
6/24/2013	3,046			1,443	7,986
6/25/2013	3,046			1,382	8,317
6/26/2013	2,725			1,391	7,919
6/27/2013	2,605			1,334	7,568
6/28/2013	2,817			1,326	7,996
6/29/2013	2,566			1,386	7,646
6/30/2013	2,911			1,432	8,037

Daily Flare Monitoring Data - Bridgeton Landfill
8/7//2012 - 11/30/2014

Date	Average Device Flow (scfm)				Total Avg. Flow (scfm)
	Candlestick Flare (FL-100)	Candlestick Flare (FL-140)	Candlestick Flare (FL-120)	E. Aux. Candlestick Flare	
7/1/2013	2,891			1,271	7,456
7/2/2013	2,708			1,514	7,531
7/3/2013	2,610				6,120
7/4/2013	2,901				6,397
7/5/2013	2,884			1,501	7,899
7/6/2013	2,544			1,535	7,970
7/7/2013	2,328			1,364	7,038
7/8/2013	2,392			1,580	7,768
7/9/2013	2,279			1,504	7,764
7/10/2013	2,004			1,570	7,534
7/11/2013	2,041			1,398	7,426
7/12/2013	2,195			1,516	7,632
7/13/2013	2,701			1,265	7,601
7/14/2013	2,188			1,305	6,818
7/15/2013	2,027			1,204	7,185
7/16/2013	1,383				5,123
7/17/2013	1,416			1,023	9,730
7/18/2013	1,066			1,003	9,310
7/19/2013	1,142				5,129
7/20/2013	957			900	8,774
7/21/2013	1,343			833	8,965
7/22/2013	1,512			1,007	9,467
7/23/2013	1,597			1,102	9,311
7/24/2013	1,609			1,047	9,588
7/25/2013	1,551			805	9,586
7/26/2013	1,612			936	9,631
7/27/2013	1,177			759	8,826
7/28/2013	949			846	8,930
7/29/2013	1,241			894	9,471
7/30/2013	801			939	8,705
7/31/2013	1,052			935	9,013

Daily Flare Monitoring Data - Bridgeton Landfill
8/7//2012 - 11/30/2014

Date	Average Device Flow (scfm)				Total Avg. Flow (scfm)
	Candlestick Flare (FL-100)	Candlestick Flare (FL-140)	Candlestick Flare (FL-120)	E. Aux. Candlestick Flare	
8/1/2013	1,210			962	9,344
8/2/2013	1,184			1,017	9,047
8/3/2013	1,218			1,014	9,092
8/4/2013	1,148			975	9,059
8/5/2013	1,138			946	9,093
8/6/2013	1,266			928	10,186
8/7/2013	1,286			1,103	10,379
8/8/2013	1,381			990	10,055
8/9/2013	1,158			1,074	10,174
8/10/2013	1,348			1,043	10,339
8/11/2013	1,288			1,122	10,354
8/12/2013	1,201			1,080	10,105
8/13/2013	1,022			1,061	9,747
8/14/2013	1,101			1,174	9,310
8/15/2013	1,172			976	9,867
8/16/2013	1,141			845	9,588
8/17/2013	1,190			903	9,902
8/18/2013	1,318			902	10,194
8/19/2013	1,111			1,055	10,156
8/20/2013	1,346			1,043	10,180
8/21/2013	960			1,048	9,514
8/22/2013	1,372			888	9,937
8/23/2013	1,268			977	9,647
8/24/2013	1,272			1,083	9,597
8/25/2013	1,335			1,286	10,244
8/26/2013	1,302			1,080	9,738
8/27/2013	1,263			1,071	9,719
8/28/2013	1,230			1,089	9,300
8/29/2013	1,277			989	10,041
8/30/2013	1,071			947	9,340
8/31/2013	1,093			1,062	9,099

Daily Flare Monitoring Data - Bridgeton Landfill
8/7//2012 - 11/30/2014

Date	Average Device Flow (scfm)				Total Avg. Flow (scfm)
	Candlestick Flare (FL-100)	Candlestick Flare (FL-140)	Candlestick Flare (FL-120)	E. Aux. Candlestick Flare	
9/1/2013	1,001			1,252	10,258
9/2/2013	975			1,205	10,164
9/3/2013	760			1,150	9,848
9/4/2013	615			1,211	9,570
9/5/2013	572			1,130	9,591
9/6/2013	700			1,055	9,295
9/7/2013	737			1,092	9,528
9/8/2013	772			1,065	9,352
9/9/2013	713			1,098	9,747
9/10/2013	855			1,060	9,243
9/11/2013	841			1,088	9,332
9/12/2013	749			1,110	9,676
9/13/2013	749			1,115	9,479
9/14/2013	741			1,123	9,128
9/15/2013	788			1,073	9,225
9/16/2013	749			1,122	8,898
9/17/2013	917			1,102	9,334
9/18/2013	801			1,082	9,312
9/19/2013	772			1,058	9,528
9/20/2013	821	3,561		1,135	8,768
9/21/2013	855	2,122		1,139	6,507
9/22/2013	705	3,790		1,140	7,435
9/23/2013	701	3,769		1,122	7,061
9/24/2013	637	3,997	1,742	1,485	7,861
9/25/2013	849	1,744	2,449	1,533	6,575
9/26/2013	1,724	2,171	1,224	1,573	6,692
9/27/2013	1,209	2,145	1,348	1,453	6,155
9/28/2013	1,327	1,939	1,283	1,427	5,976
9/29/2013	2,833	2,030	1,249	1,512	7,624
9/30/2013	1,270	1,841	1,427	1,471	6,009

Daily Flare Monitoring Data - Bridgeton Landfill
8/7//2012 - 11/30/2014

Date	Average Device Flow (scfm)				Total Avg. Flow (scfm)
	Candlestick Flare (FL-100)	Candlestick Flare (FL-140)	Candlestick Flare (FL-120)	E. Aux. Candlestick Flare	
10/1/2013	1,207	1,303	1,966	1,379	5,855
10/2/2013	1,025	1,530	2,137	1,242	5,934
10/3/2013	1,003	1,524	2,075	1,222	5,824
10/4/2013	1,004	1,535	2,110	1,320	5,969
10/5/2013	980	1,515	2,053	1,300	5,848
10/6/2013	971	1,344	1,990	1,296	5,601
10/7/2013	1,013	1,570	1,929	1,101	5,613
10/8/2013	1,081	1,307	2,196	922	5,506
10/9/2013	1,382	1,427	1,915	1,048	5,772
10/10/2013	966	1,688	1,591	901	5,146
10/11/2013	900	1,870	1,900	1,222	5,892
10/12/2013	851	1,981	1,684	1,046	5,562
10/13/2013	826	1,755	1,915	528	5,024
10/14/2013	1,005	1,744	1,651	594	4,994
10/15/2013	1,030	1,805	1,393	1,330	5,558
10/16/2013	1,045	1,781	910	1,407	5,143
10/17/2013	1,005	1,259	1,776	1,239	5,279
10/18/2013	950	1,705	1,816	1,274	5,745
10/19/2013	960	1,544	1,944	1,057	5,505
10/20/2013	950	1,620	1,796	544	4,910
10/21/2013	850	1,680	1,970	1,454	5,954
10/22/2013	760	1,780	1,720	1,066	5,326
10/23/2013	900	1,700	900	1,120	4,620
10/24/2013	900	1,720	1,850	952	5,422
10/25/2013	946	1,758	1,888	1,114	5,706
10/26/2013	949	1,884	1,150	1,092	5,075
10/27/2013	1,007	1,735	1,702	1,092	5,536
10/28/2013	834	1,822	1,669	1,087	5,412
10/29/2013	1,004	1,722	1,865	854	5,445
10/30/2013	927	1,861	1,473	984	5,245
10/31/2013	970	1,741	1,941	998	5,650

Daily Flare Monitoring Data - Bridgeton Landfill
8/7//2012 - 11/30/2014

Date	Average Device Flow (scfm)				Total Avg. Flow (scfm)
	Candlestick Flare (FL-100)	Candlestick Flare (FL-140)	Candlestick Flare (FL-120)	E. Aux. Candlestick Flare	
11/1/2013	947	1,629	1,922	948	5,446
11/2/2013	964	1,642	1,890	971	5,467
11/3/2013	959	1,627	1,942	846	5,374
11/4/2013	848	1,731	1,780	1,170	5,529
11/5/2013	860	1,784	1,826	1,171	5,641
11/6/2013	1,440	2,110	1,987	770	6,307
11/7/2013	979	1,666	1,886	797	5,328
11/8/2013	1,337	1,764	1,808	662	5,571
11/9/2013	753	1,734	1,879	1,239	5,605
11/10/2013	751	1,724	1,861	1,218	5,554
11/11/2013	732	1,787	1,850	1,206	5,575
11/12/2013	731	1,567	1,756	1,224	5,278
11/13/2013	820	1,471	1,406	1,214	4,911
11/14/2013	870	1,637	1,712	1,201	5,420
11/15/2013	750	1,889	1,535	1,097	5,271
11/16/2013	931	1,941	1,761	1,031	5,664
11/17/2013	933	1,967	1,842	1,021	5,763
11/18/2013	800	1,995	1,342	1,074	5,211
11/19/2013	1,110	1,660	1,930	1,054	5,754
11/20/2013	1,040	1,670	1,580	1,030	5,320
11/21/2013	1,170	1,750	1,680	830	5,430
11/22/2013	1,103	1,684	1,532	766	5,085
11/23/2013	1,088	1,634	1,559	1,083	5,364
11/24/2013	1,017	1,522	1,587	1,068	5,194
11/25/2013	1,046	1,677	1,618	1,057	5,398
11/26/2013	706	1,256	2,460	1,024	5,446
11/27/2013	784	1,420	2,328	1,029	5,561
11/28/2013	660	1,601	2,423	934	5,618
11/29/2013	550	1,561	2,465	943	5,519
11/30/2013	665	1,614	2,389	1,069	5,737

Daily Flare Monitoring Data - Bridgeton Landfill
8/7//2012 - 11/30/2014

Date	Average Device Flow (scfm)				Total Avg. Flow (scfm)
	Candlestick Flare (FL-100)	Candlestick Flare (FL-140)	Candlestick Flare (FL-120)	E. Aux. Candlestick Flare	
12/1/2013	1,030	1,730	1,125	918	4,803
12/2/2013	872	1,202	2,437	888	5,399
12/3/2013	991	1,857	1,433	812	5,093
12/4/2013	1,022	1,170	2,425	772	5,389
12/5/2013	862	1,052	2,549	771	5,234
12/6/2013	901	1,306	2,518	775	5,500
12/7/2013	1,175	1,765	1,980	0	4,920
12/8/2013	857	1,283	2,627	938	5,705
12/9/2013	1,025	1,478	2,025	933	5,461
12/10/2013	978	1,568	1,833	1,023	5,402
12/11/2013	829	1,422	2,460	949	5,660
12/12/2013	883	1,265	2,602	908	5,658
12/13/2013	894	1,301	2,707	841	5,743
12/14/2013	1,206	1,291	2,084	821	5,402
12/15/2013	1,040	1,262	2,364	1,168	5,834
12/16/2013	1,474	1,227	1,888	916	5,505
12/17/2013	1,126	1,174	2,427	868	5,595
12/18/2013	994	1,703	2,099	1,099	5,895
12/19/2013	1,727	1,938	852	977	5,494
12/20/2013	1,880	1,560	2,522	988	6,950
12/21/2013	1,968	1,088	2,541	1,061	6,658
12/22/2013	1,610	1,298	2,420	960	6,288
12/23/2013	1,116	1,662	2,553	871	6,202
12/24/2013	1,721	1,932	2,153	808	6,614
12/25/2013	1,063	1,604	1,725	808	5,200
12/26/2013	2,025	1,691	1,453	835	6,004
12/27/2013	1,228	1,261	2,149	851	5,489
12/28/2013	2,029	1,362	2,203	968	6,562
12/29/2013	1,755	1,425	2,302	919	6,401
12/30/2013	2,025	1,350	2,350	950	6,675
12/31/2013	2,100	1,300	2,156	932	6,488

Daily Flare Monitoring Data - Bridgeton Landfill
8/7//2012 - 11/30/2014

Date	Average Device Flow (scfm)				Total Avg. Flow (scfm)
	Candlestick Flare (FL-100)	Candlestick Flare (FL-140)	Candlestick Flare (FL-120)	E. Aux. Candlestick Flare	
1/1/2014	1,850	2,467	1,270	890	6,477
1/2/2014	1,800	2,100	1,200	950	6,050
1/3/2014	2,640	1,930	1,450	1,025	7,045
1/4/2014	1,836	2,635	1,356	965	6,792
1/5/2014	1,257	2,500	1,895	863	6,515
1/6/2014	1,877	1,950	1,456	892	6,175
1/7/2014	1,789	2,426	1,852	964	7,031
1/8/2014	1,877	2,855	0	974	5,706
1/9/2014	1,654	2,756	0	964	5,374
1/10/2014	1,422	2,315	1,687	1,204	6,628
1/11/2014	1,654	2,146	1,789	1,178	6,767
1/12/2014	1,623	2,635	1,664	1,065	6,987
1/13/2014	1,110	3,300	2,040	972	7,422
1/14/2014	2,650	791	2,360	975	6,776
1/15/2014	1,600	2,808	1,750	1,035	7,193
1/16/2014	1,906	2,795	1,743	1,022	7,466
1/17/2014	1,216	2,893	1,900	945	6,954
1/18/2014	2,500	2,945	1,408	895	7,748
1/19/2014	2,203	2,756	1,623	833	7,415
1/20/2014	1,824	3,331	2,201	1,075	8,431
1/21/2014	1,914	2,620	1,375	1,437	7,346
1/22/2014	2,098	2,070	1,313	866	6,347
1/23/2014	1,907	2,690	1,120	1,003	6,720
1/24/2014	2,009	2,240	1,034	1,092	6,375
1/25/2014	1,489	2,436	1,624	950	6,499
1/26/2014	1,326	2,136	1,956	933	6,351
1/27/2014	1,851	2,364	1,514	963	6,692
1/28/2014	1,542	2,580	1,083	975	6,180
1/29/2014	1,332	2,413	1,415	906	6,066
1/30/2014	1,343	2,250	1,429	830	5,852
1/31/2014	1,425	2,154	1,587	1,142	6,308

Daily Flare Monitoring Data - Bridgeton Landfill
8/7//2012 - 11/30/2014

Date	Average Device Flow (scfm)				Total Avg. Flow (scfm)
	Candlestick Flare (FL-100)	Candlestick Flare (FL-140)	Candlestick Flare (FL-120)	E. Aux. Candlestick Flare	
2/1/2014	1,489	2,408	1,968	1,191	7,055
2/2/2014	1,562	2,548	1,874	1,062	7,047
2/3/2014	1,572	2,365	1,953	1,069	6,958
2/4/2014	1,469	2,312	1,914	1,084	6,778
2/5/2014	1,445	2,455	1,788	1,085	6,773
2/6/2014	1,421	2,199	1,545	1,067	6,232
2/7/2014	1,284	2,037	1,709	1,090	6,121
2/8/2014	1,378	2,459	1,832	964	6,632
2/9/2014	1,474	2,589	1,916	1,017	6,995
2/10/2014	1,294	2,611	1,779	973	6,658
2/11/2014	1,260	2,367	1,725	983	6,334
2/12/2014	1,315	2,422	1,821	955	6,512
2/13/2014	1,405	2,480	1,894	882	6,662
2/14/2014	1,294	2,412	1,770	900	6,377
2/15/2014	1,362	2,468	1,793	845	6,469
2/16/2014	1,309	2,432	1,703	943	6,387
2/17/2014	1,393	2,443	1,765	832	6,433
2/18/2014	1,430	2,460	1,954	869	6,714
2/19/2014	1,468	2,395	2,004	725	6,592
2/20/2014	1,345	2,423	1,878	890	6,536
2/21/2014	1,435	2,498	2,008	528	6,469
2/22/2014	1,430	2,532	2,077	432	6,471
2/23/2014	1,272	2,599	2,018	406	6,295
2/24/2014	1,450	2,424	1,973	346	6,193
2/25/2014	1,465	2,495	1,925	594	6,479
2/26/2014	1,460	2,481	1,876	798	6,615
2/27/2014	1,448	2,437	1,918	811	6,615
2/28/2014	1,525	2,192	2,006	687	6,410

Daily Flare Monitoring Data - Bridgeton Landfill
8/7//2012 - 11/30/2014

Date	Average Device Flow (scfm)				Total Avg. Flow (scfm)
	Candlestick Flare (FL-100)	Candlestick Flare (FL-140)	Candlestick Flare (FL-120)	E. Aux. Candlestick Flare	
3/1/2014	1,446	1,994	2,191	705	6,335
3/2/2014	1,486	1,892	2,257	792	6,427
3/3/2014	1,378	1,776	2,182	906	6,243
3/4/2014	1,488	2,000	2,168	770	6,426
3/5/2014	1,501	2,023	2,116	730	6,370
3/6/2014	1,344	2,006	2,100	650	6,100
3/7/2014	1,402	1,993	2,123	775	6,293
3/8/2014	1,391	1,912	2,100	1,131	6,535
3/9/2014	1,399	1,953	2,089	1,065	6,506
3/10/2014	1,428	2,067	2,145	951	6,592
3/11/2014	1,066	2,152	2,348	912	6,478
3/12/2014	1,586	1,486	2,289	831	6,192
3/13/2014	1,853	2,040	1,426	875	6,194
3/14/2014	1,555	1,767	2,308	830	6,460
3/15/2014	975	1,917	2,555	814	6,260
3/16/2014	1,125	2,089	2,016	788	6,018
3/17/2014	834	2,336	2,247	837	6,254
3/18/2014	1,189	2,317	2,641	808	6,955
3/19/2014	1,171	2,817	2,564	826	7,377
3/20/2014	1,632	2,586	2,452	765	7,435
3/21/2014	1,693	2,748	2,378	763	7,581
3/22/2014	1,422	2,771	2,212	775	7,180
3/23/2014	1,400	2,543	2,362	803	7,107
3/24/2014	1,573	2,375	2,390	816	7,155
3/25/2014	1,717	2,567	2,037	845	7,167
3/26/2014	1,624	2,500	2,114	814	7,051
3/27/2014	1,468	2,577	2,047	541	6,633
3/28/2014	1,328	2,400	2,298	571	6,597
3/29/2014	1,315	2,519	1,869	753	6,457
3/30/2014	1,451	2,955	1,752	858	7,016
3/31/2014	1,226	2,643	2,354	1,027	7,250

Daily Flare Monitoring Data - Bridgeton Landfill
8/7//2012 - 11/30/2014

Date	Average Device Flow (scfm)				Total Avg. Flow (scfm)
	Candlestick Flare (FL-100)	Candlestick Flare (FL-140)	Candlestick Flare (FL-120)	E. Aux. Candlestick Flare	
4/1/2014	1,391	2,468	2170	898	6,926
4/2/2014	1,624	2,276	2,082	783	6,765
4/3/2014	1,646	2,052	2,443	705	6,847
4/4/2014	1,846	2,171	2,178	693	6,888
4/5/2014	1,875	2,170	2,370	781	7,196
4/6/2014	2,039	2,247	2,191	771	7,249
4/7/2014	1,804	2,114	2,224	927	7,068
4/8/2014	1,777	2,061	2,265	896	6,999
4/9/2014	1,854	2,085	2,216	933	7,088
4/10/2014	1,723	2,079	2,518	890	7,210
4/11/2014	2,011	2,083	1,801	871	6,767
4/12/2014	2,171	2,371	1,626	895	7,063
4/13/2014	2,222	2,358	1,780	880	7,239
4/14/2014	2,220	2,308	1,502	816	6,847
4/15/2014	2,250	2,194	1,531	733	6,709
4/16/2014	2,279	2,157	1,737	624	6,797
4/17/2014	2,260	2,482	1,732	781	7,256
4/18/2014	2,074	2,735	1,625	908	7,342
4/19/2014	2,233	2,773	1,682	856	7,544
4/20/2014	2,286	2,804	1,743	842	7,675
4/21/2014	2,189	2,875	1,801	808	7,672
4/22/2014	2,093	3,292	2,046	848	8,279
4/23/2014	1,996	3,251	2,070	814	8,131
4/24/2014	2,056	2,997	1,652	692	7,398
4/25/2014	2,384	3,324	1,632	699	8,039
4/26/2014	2,388	3,312	1,611	951	8,262
4/27/2014	2,399	3,286	1,612	909	8,206
4/28/2014	2,282	3,178	1,446	944	7,850
4/29/2014	2,088	2,993	1,361	935	7,377
4/30/2014	2,000	3,025	1,639	942	7,606

Daily Flare Monitoring Data - Bridgeton Landfill
8/7//2012 - 11/30/2014

Date	Average Device Flow (scfm)				Total Avg. Flow (scfm)
	Candlestick Flare (FL-100)	Candlestick Flare (FL-140)	Candlestick Flare (FL-120)	E. Aux. Candlestick Flare	
5/1/2014	1,765	2,843	2,017	947	7,572
5/2/2014	1,650	2,812	2,290	905	7,657
5/3/2014	1,903	3,084	2,058	908	7,954
5/4/2014	2,313	3,362	1,503	921	8,099
5/5/2014	2,409	3,480	1,556	831	8,276
5/6/2014	2,265	3,054	1,430	774	7,523
5/7/2014	1,641	3,309	1,943	806	7,699
5/8/2014	1,319	3,075	2,456	836	7,687
5/9/2014	1,314	3,082	2,523	788	7,706
5/10/2014	1,328	3,151	2,523	769	7,771
5/11/2014	1,341	3,150	2,595	767	7,853
5/12/2014	1,358	3,133	2,727	767	7,985
5/13/2014	868	2,371	2,238	707	6,185
5/14/2014	640	2,395	2,289	767	6,091
5/15/2014	1,149	2,578	2,189	792	6,708
5/16/2014	1,306	2,758	2,271	719	7,054
5/17/2014	1,441	2,953	2,305	679	7,377
5/18/2014	1,505	3,009	2,318	833	7,665
5/19/2014	1,473	2,946	2,558	760	7,736
5/20/2014	1,599	2,788	2,404	763	7,555
5/21/2014	1,479	2,772	2,647	763	7,661
5/22/2014	1,359	2,678	3,166	728	7,932
5/23/2014	1,296	2,648	3,226	692	7,861
5/24/2014	1,476	2,590	3,198	599	7,864
5/25/2014	1,338	2,490	3,002	697	7,527
5/26/2014	1,380	2,589	2,999	683	7,650
5/27/2014	1,431	2,939	3,482	659	8,510
5/28/2014	1,415	2,941	3,496	595	8,446
5/29/2014	1,401	2,964	3,567	537	8,469
5/30/2014	1,360	2,976	3,623	436	8,395
5/31/2014	1,360	3,007	3,647	356	8,370

Daily Flare Monitoring Data - Bridgeton Landfill
8/7//2012 - 11/30/2014

Date	Average Device Flow (scfm)				Total Avg. Flow (scfm)
	Candlestick Flare (FL-100)	Candlestick Flare (FL-140)	Candlestick Flare (FL-120)	E. Aux. Candlestick Flare	
6/1/2014	1,647	2,000	3,464	283	7,394
6/2/2014	1,922	3,194	2,700	223	8,038
6/3/2014	2,022	3,265	2,811	160	8,259
6/4/2014	1,936	3,471	2,962	151	8,521
6/5/2014	1,874	3,372	2,847	141	8,234
6/6/2014	1,890	3,400	2,711	317	8,317
6/7/2014	1,686	3,080	2,496	743	8,006
6/8/2014	1,668	3,083	2,462	673	7,886
6/9/2014	1,612	2,987	2,332	634	7,565
6/10/2014	1,636	3,003	2,424	586	7,649
6/11/2014	1,653	3,031	2,492	536	7,711
6/12/2014	1,674	3,069	2,456	538	7,737
6/13/2014	1,487	2,979	2,248	558	7,272
6/14/2014	1,762	3,184	2,590	489	8,025
6/15/2014	1,764	3,176	2,596	503	8,040
6/16/2014	1,880	3,361	2,628	436	8,306
6/17/2014	2,437	2,678	2,919	527	8,561
6/18/2014	2,154	2,853	2,771	642	8,420
6/19/2014	1,938	2,686	2,725	846	8,195
6/20/2014	1,914	2,606	2,800	863	8,182
6/21/2014	1,915	N/A	N/A	830	N/A
6/22/2014	1,886	N/A	N/A	603	N/A
6/23/2014	1,955	2,644	2,818	582	7,998
6/24/2014	1,933	2,603	2,695	742	7,974
6/25/2014	2,102	2,708	3,033	262	8,105
6/26/2014	1,954	2,914	3,540	0	8,408
6/27/2014	1,577	3,471	3,505	0	8,553
6/28/2014	1,971	3,462	3,501	0	8,934
6/29/2014	1,887	3,334	3,390	0	8,611
6/30/2014	2,027	3,360	3,427	0	8,814

Daily Flare Monitoring Data - Bridgeton Landfill
8/7//2012 - 11/30/2014

Date	Average Device Flow (scfm)				Total Avg. Flow (scfm)
	Candlestick Flare (FL-100)	Candlestick Flare (FL-140)	Candlestick Flare (FL-120)	E. Aux. Candlestick Flare	
7/1/2014	1,902	3,662	3,617	0	9,181
7/2/2014	1,599	3,221	3,406	0	8,226
7/3/2014	1,795	3,484	3,538	0	8,816
7/4/2014	1,933	3,611	3,623	0	9,167
7/5/2014	1,537	3,140	3,229	0	7,906
7/6/2014	1,960	3,497	3,527	0	8,985
7/7/2014	2,042	3,552	3,529	0	9,123
7/8/2014	2,083	3,096	3,324	0	8,503
7/9/2014	2,114	3,432	2,898	0	8,444
7/10/2014	2,103	3,474	2,906	0	8,483
7/11/2014	2,292	3,085	2,656	0	8,033
7/12/2014	2,308	3,859	3,229	0	9,396
7/13/2014	2,253	3,818	3,183	0	9,254
7/14/2014	2,059	3,509	3,045	0	8,613
7/15/2014	2,057	3,377	2,998	0	8,432
7/16/2014	2,190	3,743	3,185	0	9,118
7/17/2014	2,232	3,601	3,121	0	8,953
7/18/2014	2,294	3,853	3,303	0	9,450
7/19/2014	2,349	3,525	3,116	0	8,989
7/20/2014	2,375	3,875	3,263	0	9,514
7/21/2014	2,384	3,877	3,317	0	9,578
7/22/2014	2,440	3,913	3,344	0	9,697
7/23/2014	2,290	3,845	3,250	0	9,385
7/24/2014	2,184	3,718	3,167	0	9,069
7/25/2014	2,128	3,659	3,187	0	8,975
7/26/2014	2,094	3,229	2,848	243	8,415
7/27/2014	2,354	3,304	3,180	576	9,414
7/28/2014	1,981	3,377	3,048	222	8,629
7/29/2014	2,103	3,637	3,097	0	8,837
7/30/2014	2,197	3,723	3,081	0	9,001
7/31/2014	2,200	3,663	3,091	0	8,954

Daily Flare Monitoring Data - Bridgeton Landfill
8/7//2012 - 11/30/2014

Date	Average Device Flow (scfm)				Total Avg. Flow (scfm)
	Candlestick Flare (FL-100)	Candlestick Flare (FL-140)	Candlestick Flare (FL-120)	E. Aux. Candlestick Flare	
8/1/2014	2,121	3,620	3,072	0	8,814
8/2/2014	2,135	3,650	3,103	0	8,888
8/3/2014	2,235	3,484	2,952	0	8,671
8/4/2014	2,272	3,806	3,206	0	9,284
8/5/2014	2,241	3,748	3,193	32	9,215
8/6/2014	1,925	3,206	2,744	0	7,875
8/7/2014	2,040	3,496	3,135	0	8,671
8/8/2014	2,128	3,615	3,087	0	8,830
8/9/2014	2,070	3,552	3,039	0	8,661
8/10/2014	2,128	3,652	3,102	0	8,882
8/11/2014	2,153	3,674	3,096	0	8,923
8/12/2014	2,065	3,588	3,098	0	8,751
8/13/2014	2,147	3,691	3,158	0	8,996
8/14/2014	2,240	3,588	3,048	0	8,877
8/15/2014	2,229	3,759	3,152	0	9,140
8/16/2014	2,080	3,589	3,095	0	8,763
8/17/2014	2,081	3,596	3,095	0	8,772
8/18/2014	2,149	3,656	3,221	0	9,026
8/19/2014	2,152	3,699	3,420	0	9,270
8/20/2014	2,107	3,713	3,340	0	9,159
8/21/2014	2,138	3,629	3,319	0	9,086
8/22/2014	2,249	3,814	3,397	0	9,460
8/23/2014	2,359	3,905	3,495	0	9,759
8/24/2014	2,275	3,458	3,256	0	8,988
8/25/2014	2,363	3,936	3,496	0	9,794
8/26/2014	2,094	3,501	3,061	0	8,656
8/27/2014	2,156	3,816	3,325	0	9,297
8/28/2014	2,073	3,863	3,170	0	9,105
8/29/2014	2,012	3,749	3,200	0	8,961
8/30/2014	1,966	3,474	3,437	0	8,877
8/31/2014	2,142	3,640	3,464	0	9,245

Daily Flare Monitoring Data - Bridgeton Landfill
8/7//2012 - 11/30/2014

Date	Average Device Flow (scfm)				Total Avg. Flow (scfm)
	Candlestick Flare (FL-100)	Candlestick Flare (FL-140)	Candlestick Flare (FL-120)	E. Aux. Candlestick Flare	
9/1/2014	1,954	3,154	3,383	0	8,491
9/2/2014	1,670	3,136	3,740	0	8,546
9/3/2014	1,739	3,479	3,630	34	8,882
9/4/2014	2,298	3,381	3,323	0	9,002
9/5/2014	2,320	3,467	3,321	0	9,108
9/6/2014	2,009	3,115	3,271	0	8,395
9/7/2014	2,102	3,212	3,256	0	8,569
9/8/2014	2,080	3,204	3,243	0	8,526
9/9/2014	2,037	3,526	2,960	0	8,523
9/10/2014	1,916	3,721	2,806	0	8,443
9/11/2014	1,799	3,450	2,651	0	7,900
9/12/2014	1,720	3,374	2,725	0	7,819
9/13/2014	1,782	3,477	2,740	0	7,999
9/14/2014	1,877	3,618	2,674	0	8,169
9/15/2014	1,928	3,595	2,654	0	8,176
9/16/2014	1,935	3,576	2,612	0	8,123
9/17/2014	1,927	3,503	2,704	0	8,134
9/18/2014	2,058	3,716	2,741	0	8,515
9/19/2014	2,111	3,769	2,801	0	8,681
9/20/2014	2,259	3,156	3,125	0	8,540
9/21/2014	2,119	2,785	3,156	0	8,060
9/22/2014	2,177	2,978	3,165	0	8,320
9/23/2014	2,210	3,008	3,257	0	8,476
9/24/2014	2,214	2,970	3,152	415	8,752
9/25/2014	2,215	2,981	3,049	721	8,966
9/26/2014	2,375	3,139	3,259	231	9,004
9/27/2014	2,357	3,151	3,341	0	8,850
9/28/2014	2,409	3,164	3,336	0	8,909
9/29/2014	2,244	3,025	3,105	467	8,841
9/30/2014	2,332	3,044	3,235	233	8,844

Daily Flare Monitoring Data - Bridgeton Landfill
8/7//2012 - 11/30/2014

Date	Average Device Flow (scfm)				Total Avg. Flow (scfm)
	Candlestick Flare (FL-100)	Candlestick Flare (FL-140)	Candlestick Flare (FL-120)	E. Aux. Candlestick Flare	
10/1/2014	2,322	3,027	3,331	49	8,729
10/2/2014	2,167	2,859	3,262	0	8,288
10/3/2014	1,983	2,690	3,138	0	7,810
10/4/2014	1,932	2,691	3,078	0	7,701
10/5/2014	2,042	2,772	3,205	0	8,020
10/6/2014	2,148	2,829	3,171	0	8,148
10/7/2014	2,109	2,824	3,206	0	8,140
10/8/2014	2,189	2,869	3,126	0	8,184
10/9/2014	2,043	2,727	3,124	0	7,894
10/10/2014	1,953	2,625	3,093	0	7,671
10/11/2014	1,949	2,629	3,073	0	7,652
10/12/2014	2,020	2,647	3,062	0	7,729
10/13/2014	2,023	2,580	3,064	0	7,666
10/14/2014	1,922	2,545	3,063	0	7,530
10/15/2014	1,952	2,587	3,035	0	7,574
10/16/2014	2,087	2,732	3,102	0	7,921
10/17/2014	2,066	2,665	3,099	0	7,830
10/18/2014	1,961	2,585	3,065	0	7,612
10/19/2014	1,992	2,620	3,061	0	7,673
10/20/2014	1,989	2,696	3,183	28	7,896
10/21/2014	2,078	2,712	3,091	0	7,881
10/22/2014	2,063	2,670	3,109	0	7,842
10/23/2014	2,052	2,654	3,095	0	7,800
10/24/2014	2,153	2,760	3,139	0	8,052
10/25/2014	2,288	2,840	3,202	0	8,330
10/26/2014	2,192	2,783	3,218	0	8,193
10/27/2014	2,217	2,774	3,219	0	8,210
10/28/2014	2,058	2,622	3,108	0	7,788
10/29/2014	2,003	2,584	3,076	95	7,759
10/30/2014	1,980	2,552	3,037	307	7,877
10/31/2014	1,955	2,498	3,079	0	7,532

Daily Flare Monitoring Data - Bridgeton Landfill
8/7//2012 - 11/30/2014

Date	Average Device Flow (scfm)				Total Avg. Flow (scfm)
	Candlestick Flare (FL-100)	Candlestick Flare (FL-140)	Candlestick Flare (FL-120)	E. Aux. Candlestick Flare	
11/1/2014	1,959	2,555	3,066	0	7,579
11/2/2014	1,944	2,496	3,135	0	7,574
11/3/2014	2,129	2,614	3,201	41	7,984
11/4/2014	2,007	2,524	3,213	0	7,744
11/5/2014	2,055	2,631	3,157	0	7,843
11/6/2014	1,950	2,488	3,148	0	7,585
11/7/2014	2,003	2,537	3,147	0	7,687
11/8/2014	2,008	2,513	3,158	0	7,680
11/9/2014	2,040	2,544	3,172	0	7,756
11/10/2014	2,074	2,810	3,151	0	8,034
11/11/2014	1,844	2,655	2,929	0	7,428
11/12/2014	1,764	2,563	2,905	0	7,232
11/13/2014	1,741	2,657	2,806	0	7,204
11/14/2014	1,969	2,539	2,740	0	7,247
11/15/2014	2,154	2,440	2,728	0	7,321
11/16/2014	2,090	2,419	2,772	0	7,280
11/17/2014	1,374	2,226	2,392	0	5,992
11/18/2014	1,625	2,682	2,741	0	7,048
11/19/2014	1,849	2,400	2,472	8	6,729
11/20/2014	1,640	2,603	2,968	22	7,232
11/21/2014	2,080	2,734	2,886	0	7,700
11/22/2014	2,341	2,966	3,025	0	8,333
11/23/2014	2,133	3,147	2,864	0	8,145
11/24/2014	1,821	2,859	2,537	0	7,217
11/25/2014	1,879	2,811	2,437	0	7,127
11/26/2014	1,958	2,811	2,474	0	7,244
11/27/2014	2,050	2,733	2,193	0	6,976
11/28/2014	2,354	2,838	2,234	0	7,426
11/29/2014	2,268	2,963	2,312	0	7,543
11/30/2014	2,313	3,077	2,510	0	7,901

Inlet Lab Data

Date	CH4	CO2	O2	N2	H2	CO (%)	CO (ppm)
8/29/2012	14	46	5	24	9.6	0.18	1,800
9/25/2012	13	47	5.3	24	10	0.19	1,900
11/1/2012	10	46	5.7	26	10	0.20	2,000
12/4/2012	11	46	5.7	26	10	0.21	2100
1/22/2013	12	47	5.7	25	11	0.20	2000
2/12/2013	11	51	4.9	21	11	0.19	1900
3/5/2013	12	55	3.9	17	13	0.21	2100
4/25/2013	8	32	11	40	8.1	0.12	1200
5/15/2013	11	49	5	20	13	0.19	1900
6/13/2013	9.8	40	7.6	30	10	0.17	1700
7/11/2013	13	47	5.3	22	12	0.18	1800
8/8/2013	12	52	4.3	18	12	0.16	1600
9/18/2013	13	54	3.9	17	11	0.17	1700
10/8/2013	12	50	4.7	20	13	0.18	1800
11/13/2013	8.6	38	8.9	35	9	0.11	1100
12/12/2013	9.1	39	8.6	33	9.6	0.12	1200
1/15/2014	6.4	29	12	45	7.5	0.091	910
2/18/2014	8.3	37	9.5	36	9	0.10	1000
3/12/2014	7.2	36	9.7	36	10	0.11	1100
4/8/2014	8.1	35	10	38	9.1	0.09	900
5/7/2014	9.8	40	8.1	32	9.7	0.10	1000
6/27/2014	11	45	6	25	12	0.11	1100
7/17/2014	10	42	6.7	27	13	0.21	2100
8/14/2014	11	45	5.7	24	13	0.21	2100
9/11/2014	10	44	6.3	26	13	0.13	1300
10/6/2014	9.7	40	7.2	29	12	0.13	1300
11/20/2014	7.4	32	10	39	11	0.12	1200

Daily Flare Monitoring Data And Inlet Lab Data

Date	Enclosed Flare										Candlestick Flare FL-100 (Flare Sta 2)										Flare Sta #3 FL-120		Flare Sta #1 FL-140		Total Utility Flare Flow		East Side Flare		Total Flow scfm	
	CH4	CO2	O2	Bal.	Press./Vac.	Gas Inlet Temp (°F)	Flow (scfm)	Flow Set Point	Enclosed Flare Temp	Callidus Flare Temp	Callidus Flow (scfm)	Total Flow (scfm)	CH4	CO2	O2	Bal.	Press./Vac.	Gas Inlet Temp (°F)	Flow (scfm)	Flare Temp.	Flow (scfm)	Flare Temp.	Flow (scfm)	Flare Temp.	Flow (scfm)	Flare Temp.	Flow (scfm)	CH4		Flow (scfm)
																														scfm
8/7/2012	16.9	52.7	3.6	26.8	-34.5	139	3822	1658				16.9	51.9	3.7	27.5	-46	137	1867									1.867	16.1	1908.74	7597.74
8/8/2012	17.4	52.4	3.7	26.5	-34.7	138	3916	1655				17.2	52.3	3.7	26.8	-45.8	136	1886									1.886	16.1	1844.12	7646.12
8/9/2012	14.8	48.9	4.7	30.7	-34.6	136	3718	1651				14.7	50.9	4.6	29.8	-47.3	132	1885									1.885	16.1	1893.58	7496.58
8/10/2012	15.2	49.2	3.8	29.8	-34.5	130	3782	1655				15.3	52.1	3.8	27.2	-47.2	129	1897									1.897	16.1	1886.41	7565.41
8/11/2012	17.2	53.9	3	25.9	-34.5	132	3597	1661				17.2	52.4	3.2	27.2	-47.4	130	1886									1.886	16.1	1767.43	7527.43
8/12/2012	16.7	61.1	1.3	20.9	-36.5	130	3000	1655				16.6	61.1	1.3	21	-55	140	1770									1.770	16.4	1756.28	6526.28
8/13/2012	16.7	56.2	2.4	24.7	-36.5	132	3670	1645				16.3	58	2.3	23.4	-56.1	132	1790									1.790	16.4	1756.06	7216.06
8/14/2012	17.1	55.7	2.3	24.9	-36.6	135	3850	1659				17	56.4	2.3	24.3	-56	132	1800									1.800	16.4	1769.94	7419.94
8/15/2012	19.8	80.4	0.6	19.2	-36.5	146	3452	1667				19.6	59.5	0.8	20.1	-55.3	142	1771									1.771	16.4	1794.08	7017.08
8/16/2012	17.8	57.4	1.6	23.2	-36.7	138	4094	1651				17.6	57.9	1.6	22.9	-56	132	1766									1.766	16.4	1723.35	7583.35
8/17/2012	16.2	55.1	2	28.1	-36.6	134	3964	1658				16.3	56.4	2	25.3	-55.9	132	1738									1.738	16.4	1738.51	7449.51
8/18/2012	17.1	55.4	2.2	25.3	-33.6	134	3896	1648				16.9	56.5	2.2	24.4	-54.1	135	1791									1.791	16.4	1909.41	7509.41
8/19/2012	19.2	57.1	1.3	22.4	-36.5	135	3680	1676				19.6	57.8	1.2	21.4	-55.7	132	1753									1.753	19	1765.22	7198.22
8/20/2012	19.1	56.1	1.8	23	-36.5	135	3750	1661				18.8	57.2	1.7	22.3	-55.6	134	1731									1.731	19	1721.19	7202.19
8/21/2012	16.5	53.5	2.8	27.2	-35.7	132	3819	1650				16.8	54.4	2.6	26.2	-55.5	133	1773									1.773	19	1338.2	6930.2
8/22/2012	17.5	56.8	1.7	24	-36.5	132	3647	1685				17.6	57.1	1.7	23.6	-54.8	130	1835									1.835	19	1831.58	7313.58
8/23/2012	17.7	56.4	1.6	24.3	-35.7	133	3854	1660				17.6	56.5	1.6	24.4	-53.6	130	1869									1.869	19	1849	7577
8/24/2012	16.5	56.6	2.4	24.5	-35.5	135	4022	1663				16.3	56.8	2.5	24.4	-61.1	136	1976									1.976	19	1960.46	7956.46
8/25/2012	17	56	2.3	24.7	-35.6	135	3955	1661				17.3	54.8	2.5	25.4	-61	135	1967									1.967	19	1986.47	7908.47
8/26/2012	17.8	55.7	2.5	24	-35.6	137	3925	1658				17.7	55.9	2.6	23.8	-61.3	132	2009									2.009	15.7	2015.86	7949.86
8/27/2012	15.9	54.4	2.6	27.1	-35.5	135	3911	1657				15.9	54.3	2.5	27.3	-61.1	130	1960									1.960	15.7	1959.93	7830.93
8/28/2012	15.9	56.5	2.6	25	-35.6	136	3997	1667				15.5	57.4	2.6	24.5	-60.6	130	1993									1.993	15.7	2006.21	7996.21
8/29/2012	16.1	56	2.9	25	-37.8	134	3901	1667				16.1	57	2.9	24.9	-68.9	130	2208									2.208	15.7	2201.02	8310.02
8/30/2012	15	53.6	3.5	27.9	-38.7	133	3902	1635				14.4	54.5	3.7	27.4	-70.1	128	2192									2.192	15.7	2181.25	8275.25
8/31/2012	14.2	54	3.8	28	-38.7	132	4074	1653				14.2	53.8	3.9	28.1	-71.1	128	2169									2.169	15.7	2189.22	8432.22
9/1/2012	15.5	53.4	3.6	27.5	-38.9	128	4051	1656				15.2	54	3.6	27.2	-71	124	2209									2.209	15.7	2162	8422
9/2/2012	16	53.5	3.7	26.8	-38.9	128	3984	1653				15.8	54.1	3.7	26.4	-71.6	120	2159									2.159	14.7	2148.79	8291.79
9/3/2012	14.8	56.4	3.2	25.6	-38.6	132	4150	1653				14.4	57.1	3.2	25.3	-70.2	130	2102									2.144	14.7	2143.36	8437.36
9/4/2012	15.1	55.8	3.4	28.2	-38.8	130	4028	1658				14.9	57	3.2	24.9	-70.4	126	2156									2.156	14.7	2142.92	8390.92
9/5/2012	15.4	54.9	3.4	28.3	-38.7	130	3975	1659				15.3	56	3.5	25.4	-71	124	2174									2.174	14.7	2164.14	8313.14
9/6/2012	14.3	54.3	3.6	27.8	-39.1	132	4178	1660				14.1	55.2	3.6	27.1	-70.4	127	2144									2.144	14.7	2050.95	8372.95
9/7/2012	16.6	58.6	1.8	23	-38.1	136	4357	1677				16.8	58.9	1.8	22.5	-69.1	134	2170									2.170	14.7	2194.05	8721.05
9/8/2012	14.4	52.8	4.1	28.7	-38	126	3951	1651				14.2	54	4	27.8	-70.7	122	2192									2.192	14.7	2167.82	8310.82
9/9/2012	14.2	53.3	3.8	28.7	-38.9	130	4135	1655				14	54.1	3.8	28.1	-70.7	126	2178									2.178	14.4	2152.45	8465.45
9/10/2012	14.3	53.6	3.9	28.2	-38.8	132	4144	1658				14.3	53.8	3.9	28.2	-70.9	125	2154									2.154	14.4	2158.12	8454.12
9/11/2012	14.4	52.9	3.9	28.8	-38.9	126	3999	1659				14.1	54	3.8	28.1	-71.1	121	2203									2.203	14.4	2183.63	8385.63
9/12/2012	14.3	53.9	3.8	28	-39	126	4156	1648				14.1	53.7	3.8	28.1	-71	122	2175									2.175	14.4	2191.26	8522.26
9/13/2012	14.7	54.1	3.5	27.7	-38.9	126	3639	1670				14.6	54.8	3.4	27.2	-69.5	120	2199									2.199	14.4	2193.66	8031.66
9/14/2012	13.6	51.5	4.4	30.5	-39.1	120	3653	1643				13.6	51.9	4.4	30.1	-68.7	116	2194									2.194	14.4	2123.39	7970.39
9/15/2012	17.3	56.9	2	23.8	-35.7	112	4060	1655				15.8	59.4	1.9	22.9	-64.4	108	2093									2.093	14.4	1598.87	8341.87
9/16/2012	15.1	55.3	4.1	26.5	-35.7	125	4107	1651				15.2	56.8	2.9	25.1	-61.4	120	1980									1.980	14.7	1987.65	8054.65
9/17/2012	14.5	54	3.8	27.3	-35.5	124	4450	1665				14.5	54	3.8	27.3	-61.4	120	1934									1.934	14.7	1921.85	8305.85
9/18/2012	13.3	52	4.7	30	-35.8	121	4596	1654				13.1	52.6	4.8	29.5	-61.5	116	2003									2.003	14.7	1930.82	8529.82
9/19/2012	14.8	56.1	3.3	25.8	-35.8	130	4435	1648				14.8	56.9	3.3	25	-59.6	126	1902									1.902	14.7	1883.6	8220.6
9/20/2012	13.9	53.9	4	28.2	-35.9	124	4634	1664				13.9	55.2	3.8	27.1	-59.8	120	1859									1.859	14.7	2033.2	8526.2
9/21/2012	14.2	54.7	3.7	27.4	-33.6	124	4003	1655				14.2	55.7	3.7	26.4	-64.1	120	2139									2.139	14.7	2135.42	8277.42
9/22/2012	14.4	51.9	4.1	29.7	-33.5	132	3776	1658				14.2	53.4	4	28.4	-63.8	128	2133									2.133	14.7	2164.57	8075.57
9/23/2012	14.4	51.5	4.5	25	-35.7	134	3572	1648				14.5	54.7	4.5	26.6	-64.7	128	2167									2.167	14.7	2177.33	8167.33
9/24/2012	16	61.3	1.3	21.4	-25.4	128	4786	1668				15.8	61.9	1.3	21	-37	124	1316									1.316	14.9	2020.9	8122.9
9/25/2012	14.7	57.2	3	25.1	-35.7	120	4751	1651				14.8	57.5	3.1	24.6	-65.8	118	2167												

Date	Enclosed Flare										Candlestick Flare FL-100 (Flare Sta 2)										Flare Sta #3 FL-120		Flare Sta #1 FL-140		Total Utility Flare Flow	East Side Flare		Total Flow
	CH4	CO2	O2	Bal.	Press./Vac.	Gas Inlet Temp (°F)	Flow (scfm)	Flow Set Point	Enclosed Flare Temp	Callidus Flare Temp	Callidus Flow (scfm)	Total Flow (scfm)	CH4	CO2	O2	Bal.	Press./Vac.	Gas Inlet Temp (°F)	Flow (scfm)	Flare Temp.	Flow (scfm)	Flare Temp.	Flow (scfm)	Flare Temp.		Flow (scfm)	CH4	
11/12/2012	10.7	47.7	5.9	35.7	-40.1	105	2370	1643	1647	1880	4250	10.7	48.7	5.8	34.8	-51.3	101	1484	1369			1484	1272.72		1484	13.1	1272.72	7006.72
11/13/2012	14	58.4	3.2	24.4	-36.8	120	2195	1500	1566	2288	4483	14.6	63	1.8	20.6	-29	120	1601	1228			1601	1228		1601	13.1	1143.56	7227.56
11/14/2012	9.8	41.4	8.1	40.7	-39.9	112	2197	1604	1637	1860	4057	11.4	45.5	6.9	36.2	-51.7	110	1526	1097			1526	1117		1526	13.1	1143.75	6724.75
11/15/2012	13.3	54.4	3.6	28.7	-36.1	110	2155	1608	1649	2018	4173	13.5	54.1	3.8	28.6	-47.4	114	1576	1173			1576	1173		1576	13.1	1121.96	6870.96
11/16/2012	12.7	52.8	4.2	30.3	-36.3	111	2229	1608	1637	1932	3987	12.7	53.8	4.2	29.3	-48.2	116	1569	1163			1569	1163		1569	13.1	1123.28	6878.28
11/17/2012	13.1	53.3	4.1	29.5	-34.8	110	2103	1603	1660	1925	3938	13.2	53.9	4.2	28.7	-49.3	112	1735	1107			1735	1107		1735	13.1	1142.38	6815.38
11/18/2012	12.8	53.4	4.2	29.6	-34.3	110	2065	1622	1652	1900	3965	12.6	55.8	3.9	27.8	-48.3	118	1747	1128			1747	1128		1747	12.9	1183.66	6895.66
11/19/2012	11.1	49	6.7	33.2	-34.2	110	2088	1570	1660	1920	4008	13.3	56.7	4.1	25.9	-47.6	114	1705	1166			1705	1166		1705	12.9	1211.95	6924.95
11/20/2012	12.7	53.1	5	29.2	-33.1	112	2291	1599	1642	1945	4226	13.1	54	4.7	28.2	-46.3	112	1701	1111			1701	1111		1701	12.9	1170.78	7097.78
11/21/2012	12.5	52	4.6	30.9	-43.4	109	2500	1604	1649	2020	4520	12.8	52.4	4.6	30.2	-55.7	110	1685	1133			1685	1133		1685	12.9	1180.24	7385.24
11/22/2012	12.7	52.8	4.2	30.3	-36.3	111	2229	1608	1637	1932	3987	12.7	53.8	4.2	29.3	-48.2	116	1569	1163			1569	1163		1569	13.1	1123.28	7275.76
11/23/2012	12.9	53.4	5.1	29.4	-44.4	104	1950	1656	1631	1951	3901	12.6	55.6	4.7	27.1	-53.9	108	1655	1214			1655	1214		1655	12.9	1192.78	6748.78
11/24/2012	12.6	50.4	4.8	32.2	-43.6	100	2017	1630	1637	2046	4063	12.6	52.3	4.8	30.3	-52.3	103	1512	1342			1512	1342		1512	12.9	1261.76	6836.76
11/25/2012	13.5	59.4	3	24.1	-39.6	106	2088	1642	1667	1900	3988	13.9	60.5	2.9	22.7	-47.3	108	1312	1316			1312	1316		1312	13.8	1212.51	6512.51
11/26/2012	14.2	53.1	3.8	28.9	-39.6	104	1851	1643	1629	1766	3617	14.3	54.4	3.8	27.5	-47.1	109	1289	1209			1289	1209		1289	13.8	1233.18	6139.18
11/27/2012	13.3	54	3.7	29	-34	100	3858	1651			3858	13.6	54	4.2	28.2	-38.1	106	1134	1065			1134	1065		1134	13.8	1028.61	6020.61
11/28/2012	13.4	62.4	3.3	29.9	-35.3	110	1834	1659	1668	1840	3674	13.9	60.4	3.1	22.6	-41.4	110	1185	1078			1185	1078		1185	13.8	1140.08	5999.08
11/29/2012	12.9	54.7	4.7	29.4	-33.7	105	2371	1674	1652	1819	4190	13.1	53.6	4.6	28.7	-39.8	110	1153	1150			1153	1150		1153	13.8	1257.68	6800.68
11/30/2012	13	52.3	4.3	30.4	-34.9	110	2442	1660	1650	1818	4260	13.1	52.8	4.2	29.9	-42.1	110	1240	1181			1240	1181		1240	13.8	1199.64	6699.64
12/1/2012	12.8	56.7	4.2	26.3	-34.7	110	2507	1683	1650	1863	4370	13	57.3	4.1	25.6	-42.7	114	1307	1360			1307	1360		1307	13.8	1307.9	6984.9
12/2/2012	13	54.5	4.1	28.4	-35.4	112	2616	1656	1654	1849	4465	13.1	54.1	4.2	28.6	-43.5	116	1323	1257			1323	1257		1323	13.9	1280.65	7068.65
12/3/2012	13	54.6	4.1	28.3	-35.8	115	2558	1656	1640	1839	4427	13.2	55	4	27.8	-45.2	116	1409	1429			1409	1429		1409	13.9	1288.83	7124.83
12/4/2012	11.9	55.2	4.6	28.3	-34.5	108	2156	1641	1596	1980	4136	12.1	55.6	4.6	27.7	-46.3	110	1478	1254			1478	1254		1478	13.9	1250.89	6864.89
12/5/2012	12	51	4.7	31.4	-35.5	108	2015	1678	1638	2024	4041	12.1	52.1	4.8	31	-43.1	109	1426	1426			1426	1426		1426	13.9	1206.54	6767.54
12/6/2012	12.3	53.9	4.9	28.9	-40.2	109	2829	1656	1658	1964	4797	12.5	55	4.8	27.7	-46.2	109	1118	1162			1118	1162		1118	13.9	1117.08	7028.08
12/7/2012	12.9	50	4.9	32.4	-40.7	112	2980	1660	1650	1900	4880	12.8	51.3	4.6	31.3	-48.3	112	1230	1095			1230	1095		1230	13.9	1021.82	7131.82
12/8/2012	12.3	47.2	5.5	35	-40.9	108	3000	1650	1630	1700	4700	12	49.2	5.4	33.4	-48	108	1220	1238			1220	1238		1220	13.9	1158.85	7078.85
12/9/2012	13.3	50.3	4.5	31.9	-40.1	110	3300	1658	1650	1760	5060	13.1	51.8	4.5	30.6	-45.9	110	1075	1115			1075	1115		1075	13.9	1162.03	7297.03
12/10/2012	9.5	45.8	7.4	37.3	-40.5	80	2429	1658	1643	1670	4099	15.1	47.7	5.6	31.6	-42.2	84	1308	1350			1308	1350		1308	13.9	1316.92	6723.92
12/11/2012	9.4	46.9	6.7	37	-41.5	84	1786	1656	1644	1701	4776	17.1	51.9	4.1	26.9	-51.2	86	1289	1329			1289	1329		1289	13.9	1493.74	6269.74
12/12/2012	10.5	51.4	5.8	32.3	-36.6	122	3546	1664	1662	1933	6919	14.5	54.5	4.8	26.2	-45.4	105	1440	1200			1440	1200		1440	13.9	1706.4	8625.4
12/13/2012	9.5	46	5.6	38.9	-40.9	80	1974	1698	1662	2089	5707	14.5	46.8	6.5	32.2	-52.7	100	1644	1388			1644	1388		1644	13.9	1696.61	7403.61
12/14/2012	11.6	59.6	3.2	25.6	-36.9	88	2217	1654	1651	1417	5254	17.3	50.2	4.4	28.1	-42.1	110	1620	1393			1620	1393		1620	13.9	1592.65	6846.65
12/15/2012	9.8	49.7	5.8	34.7	-36.5	68	1846	1643	1651	2079	5532	14.5	46	5.8	33.7	-47.7	112	1607	1273			1607	1273		1607	13.9	1453.88	6985.88
12/16/2012	11.2	57.7	4.5	26.6	-36.5	65	1980	1654	1649	1882	5313	14.3	50.5	5.2	30	-44.7	124	1451	1149			1451	1149		1451	13.9	1561.4	6874.4
12/17/2012	11	53	5	31	-36	68	1913	1657	1637	2056	4817	13.5	49.1	5.7	31.7	-47	95	1612	1326			1612	1326		1612	13.9	1652.88	7061.88
12/18/2012	10.2	51.9	5.2	32.7	-35.7	60	1871	1626	1668	1642	3513	13	48.2	6.1	32.7	-47.8	90	1597	1390			1597	1390		1597	13.9	1745.62	6855.62
12/19/2012	10.6	53	5	31.4	-37.8	71	1975	1642	1649	1860	3835	15.1	47.2	5.3	32.4	-45.8	100	1782	1372			1782	1372		1782	13.9	1622.55	7239.55
12/20/2012	11.4	57.7	4	26.9	-36.7	80	2177	1665	1668	1817	3994	15.1	57.6	3.9	23.4	-44	98	1602	1074			1602	1074		1602	13.9	1503.98	7099.98
12/21/2012	10.2	50.6	5.8	33.4	-37	58	2021	1656	1650	1844	3865	12.1	45.4	6.3	36.2	-43.2	75	1551	1226			1551	1226		1551	13.9	1592.09	7008.09
12/22/2012	10.5	55.2	4.5	29.5	-36.4	68	2066	1643	1651	1850	3916	13.6	54.4	5.1	26.9	-43.5	90	1550	1145			1550	1145		1550	13.9	1929.84	7395.84
12/23/2012	10.8	52	4.6	32.9	-37.6	79	2037	1635	1632	1774	3811	14.1	51	4.7	30.2	-47.8	99	1969	1227			1969	1227		1969	13.8	1999.6	7779.6
12/24/2012	10.5	53.7	4.8	31	-36.4	69	1822	1612	1659	1750	3572	13.8	51.2	5.2	29.8	-47.7	90	2059	1131			2059	1131		2059	13.8	1890.03	7521.03
12/25/2012	10	51	5.1	33.9	-36.1	60	1709	1632	1632	1805	3514	14.2	51.6	4.2	30	-46.3	95	1895	1242			1895	1242		1895	13.8	1797.74	7206.74
12/26/2012	10.3	56.2	4.7	28.8	-36	59	1481	1653	1642	1882	3363	15	58.4	3.7	22.9	-46.1	91	1956	1231			1956	1231		1956	13.8	1635.39	6954.39
12/27/2012	10.3	54.5	4.2	31	-37.8	67	1946	1655	1652	1784	3730	15	53.2	3.8	28	-45.3	102	1662	1137			1662	1137		1662	13.8	1565.15	6957.15
12/28/2012	12.2	58.2	3	26.6	-39.4	69	1873	1670	1647	1891	3764	15.3	55.1	3.7	25.9	-44.9	105	1543	1246									

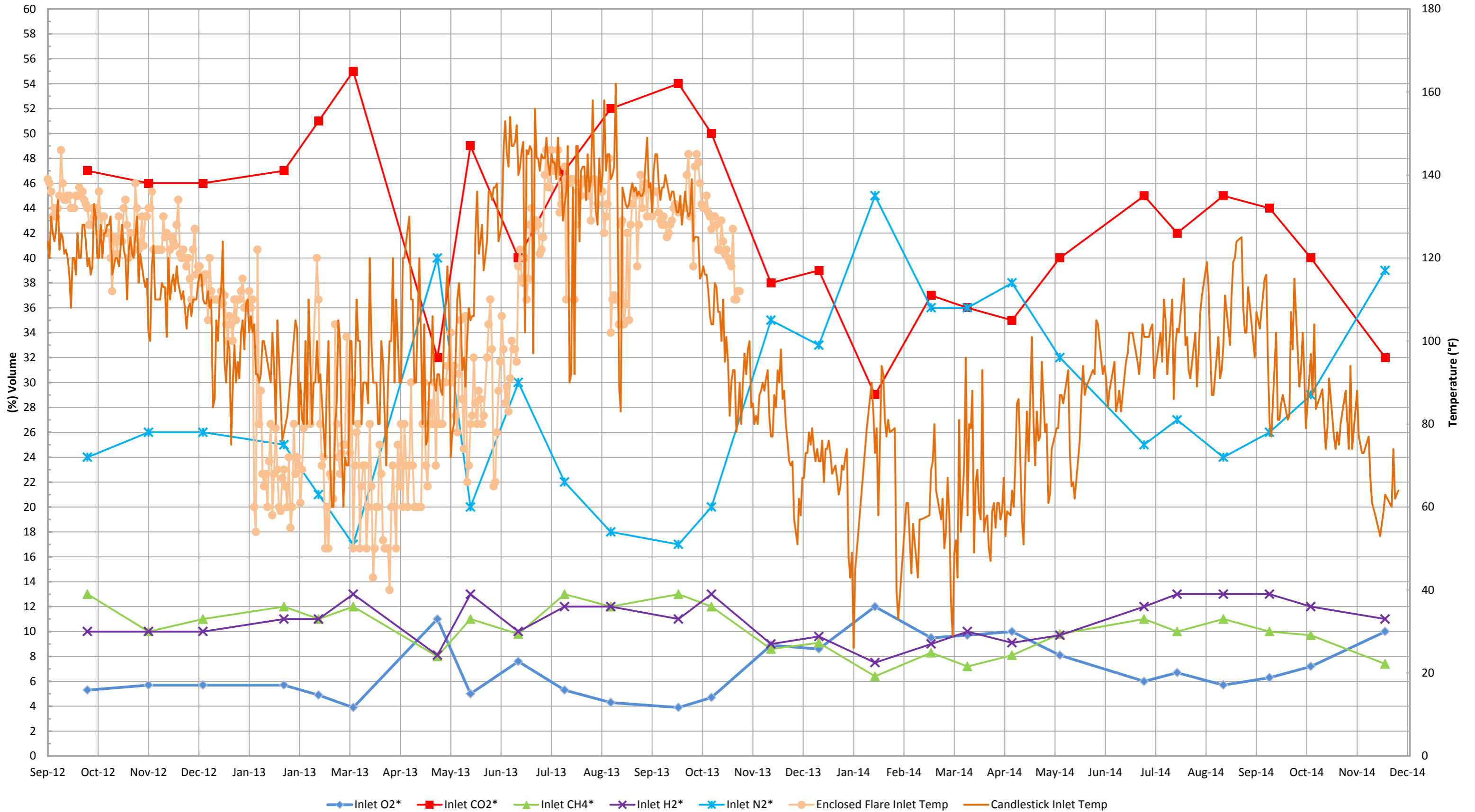
Date	Enclosed Flare										Candlestick Flare FL-100 (Flare Sta 2)										Flare Sta #3 FL-120		Flare Sta #1 FL-140		Total Utility Flare Flow		East Side Flare		Total Flow		
	CH4	CO2	O2	Bal.	Press./Vac.	Gas Inlet Temp (°F)	Flow (scfm)	Flow Set Point	Enclosed Flare Temp	Callidus Flare Temp	Callidus Flow (scfm)	Total Flow (scfm)	CH4	CO2	O2	Bal.	Press./Vac.	Gas Inlet Temp (°F)	Flow (scfm)	Flare Temp.	Flow (scfm)	Flare Temp.	Flow (scfm)	Flare Temp.	Flow (scfm)	Flare Temp.	Flow (scfm)	CH4		Flow (scfm)	scfm
2/20/2013	12.4	54.9	4.2	28.5	-46.3	43	2324	1595	1501	2094	4418	13	57.6	3.7	25.7	59.1	60	1021	813							951	0	0	5369		
2/21/2013	13	57.9	4.1	25	-47.1	50	2435	1612	1621	2092	4527	13.1	62.8	3.5	20.6	65	60	1021	863							1,021	0	0	5548		
2/22/2013	13.5	58.8	3.8	23.9	-47.7	60	2555	1593	1595	2108	4663	13.3	62	3.7	21	70.4	80	1150	1088							1,150	0	0	5813		
2/23/2013	12.8	64.4	3.9	18.9	-46.8	60	2461	1601	1457	2024	4485	13.6	62.7	3.3	20.4	71.4	85	1011	891							1,011	0	0	5496		
2/24/2013	12.7	57.3	3.2	23.9	-44.4	70	2293	1598	1601	2202	4495	14.9	64.3	2.2	18.6	60.4	70	908	1015							1,015	0	0	5828		
2/25/2013	12.8	58.6	3	25.6	-43.7	68	2650	1606	1611	1987	4637	13	60.5	2.6	23.9	87.2	100	1080	1159							1,080	0	0	5717		
2/26/2013	14	63	2.1	20.9	-47.5	52	2398	1608	1572	2293	4691	14.1	63.5	2.1	20.3	59.5	75	935	889							935	0	0	5626		
2/27/2013	14.1	55.7	3.8	26.4	-47	50	1811	1585	1603	1804	3615	15	59.3	3.1	22.6	40.4	60	818	1226							818	0	0	4433		
2/28/2013	13.3	60.5	3.1	23.1	-47	50	2112	1616	1614	1987	4637	13.3	60.1	3.4	23.2	57.7	72	908	1218							908	0	0	4995		
3/1/2013	13.6	63	3	20.4	-46.5	50	2192	1591	1586	1926	4118	14.3	66.1	1.9	17.7	55.8	70	848	952							848	0	0	4966		
3/2/2013	14.4	58.5	3.2	23.9	-45.7	40	2293	1598	1601	2202	4495	14.9	64.3	2.2	18.6	60.4	70	908	1098							906	0	0	5401		
3/3/2013	12.4	59.6	3.6	24.4	-46.6	60	2533	1594	1603	2357	4890	13	61	3	23	78.7	100	874	708							874	0	0	5764		
3/4/2013	12.5	64.5	3.5	19.5	-45.9	70	2659	1568	1651	2365	5024	13.3	66.6	2.6	17.5	78.6	100	913	1247							913	0	0	5937		
3/5/2013	12.7	65.4	3.1	18.3	-46.6	60	2709	1595	1590	2313	5022	13.6	65.6	3.2	17.6	72.1	80	976	1231							976	0	0	5998		
3/6/2013	12.1	57.6	4.6	25.7	-46.3	50	2414	1615	1593	2283	4697	12.9	62.4	3.9	20.8	74.8	90	1012	1149							1,012	0	0	5709		
3/7/2013	13	62.3	3.2	21.5	-46.8	75	2542	1604	1599	2340	4882	13.6	64.6	2.6	19.2	74.2	110	879	974							879	0	0	5761		
3/8/2013	12.8	60.8	3.5	22.9	-46.7	65	2526	1614	1600	2380	4906	13.1	63.3	3	20.6	81.9	100	957	1080							957	0	0	5863		
3/9/2013	13.6	61.2	3	22.2	-46.5	80	2711	1598	1603	2369	5100	15.3	64.8	1.5	18.3	74.2	100	915	1266							915	0	0	6015		
3/10/2013	13.7	64.4	2.4	19.5	-46.4	60	2726	1557	1610	2266	4992	14.2	65.5	2.1	18.2	76.2	80	1073	1015							1,073	0	0	6065		
3/11/2013	13.3	59.1	3.7	23.9	-50.1	80	3134	1585	1595	2027	5161	13.2	60.2	4	22.6	50.7	90	1178	1165							1,178	0	0	6339		
3/12/2013	12.4	56.3	4.6	27.7	-49.5	70	2933	1585	1594	2373	5306	12.9	54	3.6	29.5	65.5	90	1202	1088							1,202	0	0	6508		
3/13/2013	11.5	51.6	4.6	32.3	-44.6	60	2873	1606	1585	2307	5080	11.7	51.6	4.8	31.9	79.1	90	1332	1097							1,332	0	0	6412		
3/14/2013	13.6	57.5	2.8	26.1	-50.3	70	3015	1593	1595	2358	5149	13.7	58.3	2.5	25.5	32	85	768	908							768	0	0	5932		
3/15/2013	12.6	60.3	2.4	24.1	-49.2	90	3321	1605	1601	2237	5538	12.3	62.5	2.7	21.7	73	120	1384	1284							1,384	0	0	6842		
3/16/2013	14	57.4	2.8	25.8	-46.2	70	2762	1611	1598	1948	4710	14.2	56.8	2.7	26.2	75.8	100	1381	1003							1,381	0	0	6091		
3/17/2013	13	53.6	3.5	29.9	-48.5	60	2690	1603	1619	1836	4526	13.1	53.7	3.7	29.5	66.7	90	1842	985							1,842	0	0	6368		
3/18/2013	12.8	56.7	3.5	27	-48.4	60	2316	1599	1597	2171	4487	12.8	57.9	3.6	25.7	70.1	90	2009	1219							2,009	0	0	6496		
3/19/2013	11.5	52.8	3.9	31.8	-40.7	60	2252	1593	1576	2307	4559	16	49.5	5.4	29.1	83.3	90	1578	1125							1,578	0	0	6137		
3/20/2013	11.1	43.2	6.9	38.8	-46.7	60	2883	1621	1560	2251	5134	14.9	52	4.7	28.4	53.9	80	1167	1268							1,167	0	0	6301		
3/21/2013	12	60.4	1.8	25.8	-49.9	60	2820	1601	1611	2106	4186	12.2	59.2	1.8	26.8	49	100	1611	1789							1,611	0	0	5569		
3/22/2013	11.6	53.7	3.9	30.8	-42.9	80	2216	1589	1623	2664	4880	11.5	54.7	4	29.8	77.2	100	1339	830							1,339	0	0	6219		
3/23/2013	13.5	57	2.8	26.7	-50.1	90	3474	1646	1579	2345	5819	13.4	71.8	2.3	12.5	45.6	95	1247	1068							1,247	0	0	7066		
3/24/2013	11.9	50.6	4.3	33.2	-49.7	70	2869	1654	1591	2248	5117						1099	1191							1,099	0	0	6216			
3/25/2013	11.8	61.2	3.9	23.1	-49.3	65	2946	1656	1594	2165	5111	12.2	60.8	3.8	23.2	44.5	70	1177	1131							1,177	0	0	6288		
3/26/2013	11.9	52.6	4.5	31	-49.4	80	3255	1674	1620	2243	5498	12.1	52.9	4.5	30.5	53.5	90	1112	1075							1,112	0	0	6610		
3/27/2013	13.5	57.5	3.2	28.8	-50	85	3258	1682	1598	2248	5783	13.9	56.8	3.2	26.1	55.5	100	1167	791							1,167	0	0	6604		
3/28/2013	10.5	56	4.6	28.9	-46.2	80	3237	1684	1624	2314	5551	11	55.2	4.5	29.3	68.7	100	1322	977							1,322	0	0	6873		
3/29/2013	12.3	57.2	3.8	26.7	-45.7	90	3055	1597	1601	2293	5348	12.1	57.8	3.7	26.4	62.7	120	1898	885							1,898	0	0	7246		
3/30/2013	13.4	57.8	2.7	26.1	-41.5	70	2975	1642	1413	2349	5324	13.4	57.4	2.8	26.4	102	90	1238	1125							1,238	0	0	6562		
3/31/2013	12.9	61	2.6	23.5	-38.7	90	2826	1670	1642	2041	4867	13.4	60.8	2.3	23.5	72.2	110	1970	945							1,970	0	0	6837		
4/1/2013	12.1	53.9	4.9	29.1	-50.2	80	2755	1654	1611	2284	5039	11.9	54	4.9	29.2	39.6	100	1994	1066							1,994	0	0	7033		
4/2/2013	11.6	53.4	4.3	30.5	-49.4	80	2862	1662	1574	2192	5091	11.8	54	4.4	30.8	44.5	90	1655	780							1,655	0	0	6746		
4/3/2013	12.2	53	4.7	30.1	-50	80	3138	1655	1627	2246	5384	12.5	53.3	4.7	29.5	55.4	90	1728	1001							1,728	0	0	7112		
4/4/2013	13.3	55.6	3.7	27.4	-47.4	90	3320	1648	1546	2173	5493	13.5	55.9	3.8	26.8	58	120	2008	930							2,008	0	0	7501		
4/5/2013	12.8	57.9	3.5	25.8	-46.1	90	3001	1669	1538	2034	5035	13.1	57.1	3.4	26.4	60.5	120	2196	800							2,196	0	0	7231		
4/6/2013	14.4	58.5	2.4	24.7	-45.7	94	2976	1678	1592	2752	5966	12	59.6	2	23.4	61.6	124	1889	1266							1,889	0	0	6641		
4/7/2013																															
4/8/2013	10.8	61.1	4.6	23.5	-43.3	102	3122	1591	1522	2154	5276	11.4	58.4	4.6	25.6	54.1	130	1877	1634							1,877	0	0	7153		
4/9/2013	14	58.9	2.6	24.5	-44.9	90	2849	1603	1605	2001	4850	13.9	58.8	2.5	24.8	58.3	110	2156	1305							2,156	0	0	7006		
4/10/2013	13	58.2	3.2	25.6	-49	94	3001	1548	2499	1614	4615	12.9	58.6	3	25.5	55	110	1279	969							1,279	0	0	5894		
4/11/2013	14.6	57.3	2.8	25.3	-49	82	2719	1593	1984	1561	4280	14.7	57.1	2.8	25.4	29.															

Date	Enclosed Flare										Candlestick Flare FL-100 (Flare Sta 2)						Flare Sta #3 FL-120		Flare Sta #1 FL-140		Total Utility Flare Flow		East Side Flare		Total Flow						
	CH4	CO2	O2	Bal.	Press./Vac.	Gas Inlet Temp (°F)	Flow (scfm)	Flow Set Point	Enclosed Flare Temp	Callidus Flare Temp	Callidus Flow (scfm)	Total Flow (scfm)	CH4	CO2	O2	Bal.	Press./Vac.	Gas Inlet Temp (°F)	Flow (scfm)	Flare Temp.	Flow (scfm)	Flare Temp.	Flow (scfm)	Flare Temp.		Flow (scfm)	Flare Temp.	Flow (scfm)	CH4	Flow (scfm)	scfm
4/20/2014													11	46.3	6	36.7	-44.6	101	2286	1346	1743	1061	2804	1260	6.833			842	7675		
4/21/2014													10.7	44.3	6.7	38.3	-44.1	81	2189	1273	1801	994	2875	1248	6.864			808	7672		
4/22/2014													10.7	41.7	7.5	40.1	-44.7	70	2093	1279	2046	1106	3292	1309	7.431			848	8279		
4/23/2014													11.4	48.6	5.7	34.3	-44.6	63	1996	1280	2070	1099	3251	1323	7.317			814	8131		
4/24/2014													10.5	40.3	7.8	40.8	-39.4	76	2056	1302	1827	1632	3097	1346	6.705			692	7398		
4/25/2014													10.5	45.9	6.5	37.1	-43.5	77	2384	1311	1632	1023	3324	1340	7.340			699	8039		
4/26/2014													12	47.7	5.9	34.4	-44.5	95	2388	1336	1611	1028	3312	1324	7.311			951	8262		
4/27/2014																			2399	1351	1612	1028	3286	1328	7.297			909	8206		
4/28/2014													11.4	43.6	7.3	37.7	-44.5	78	2282	1346	1446	1130	3178	1320	6.906			944	7850		
4/29/2014													12.7	50.2	5	32.1	-44.7	80	2088	1321	1361	1119	2993	1393	6.442			935	7377		
4/30/2014													10.9	40.7	9	40.8	-44.6	61	2000	1302	1639	1054	3025	1346	6.863			942	7606		
5/1/2014													11.1	42.8	7	39.1	-43.5	63	1765	1266	1826	1054	2997	1328	6.625			947	7572		
5/2/2014													11.4	46.1	6.5	35.5	-44.2	74	1650	1261	2290	1031	2812	1312	6.752			905	7657		
5/3/2014																			1903	1279	2058	1014	3084	1292	7.045			908	7954		
5/4/2014																			2313	1319	1503	1043	3362	1334	7.178			921	8099		
5/5/2014													11.2	44.2	6.6	38	-44.0	79	2409	1315	1556	1030	3480	1354	7.445			831	8276		
5/6/2014													11.9	45.8	6.3	36	-44.8	79	2266	1306	1430	957	3054	1243	6.749			774	7523		
5/7/2014													12.2	46.7	6	35.1	-44.2	87	1641	1339	1943	962	3309	1389	6.893			806	7699		
5/8/2014													11.7	44.4	6.5	37.4	-43.8	87	1319	1325	2456	1112	3075	1422	6.851			836	7687		
5/9/2014													11.1	42.6	6.7	39.6	-44.7	85	1314	1271	2523	1095	3082	1357	6.919			788	7706		
5/10/2014																			1328	1256	2523	1090	3151	1301	7.002			769	7771		
5/11/2014																			1341	1286	2595	1121	3150	1356	7.086			767	7885		
5/12/2014													11.1	42.9	6.9	39.1	-43.8	93	1358	1300	2727	1164	3133	1340	7.219			767	7985		
5/13/2014													11	42.1	7.3	39.4	-44.7	73	868	954	2238	1021	2371	1163	5.478			707	6185		
5/14/2014													13.1	47	5.9	34	-44.8	65	640	758	2289	1096	2395	1309	5.324			767	6091		
5/15/2014													12.6	46.8	6.1	34.5	-43.9	66	1149	1205	2189	1071	2578	1288	5.916			792	6708		
5/16/2014													12.6	44	6.8	36.6	-43.9	62	1306	1236	2271	1128	2758	1325	6.335			719	7054		
5/17/2014																			1441	1223	2305	1022	2953	1250	6.698			679	7377		
5/18/2014																			1505	1291	2318	1081	3009	1257	6.832			833	7665		
5/19/2014													12.4	44.1	6.7	36.8	-43.0	76	1473	1306	2545	1181	2945	1327	6.977			760	7736		
5/20/2014													12.8	48.7	5.6	32.9	-43.6	87	1599	1257	2404	1088	2788	1293	6.791			763	7555		
5/21/2014													13	55.7	4.8	26.5	-44.8	94	1479	1239	2647	1125	2772	1309	6.898			763	7661		
5/22/2014													11.9	46.8	5.9	35.4	-43.7	87	1359	1179	3166	1234	2678	1303	7.204			728	7932		
5/23/2014													12.2	47.6	5.6	34.6	-43.9	89	1296	1215	3226	1248	2648	1306	7.169			692	7861		
5/24/2014																			1476	1256	3198	1231	2590	1233	7.265			599	7864		
5/25/2014																			1338	1201	3002	1189	2490	1241	6.830			697	7527		
5/26/2014																			1380	1256	2999	1198	2589	1223	6.967			683	7650		
5/27/2014													11.6	44.4	6.5	37	-43.5	93	1431	1245	3482	1271	2939	1260	7.852			659	8510		
5/28/2014													10.8	42.3	6.3	40.6	-43.1	92	1415	1177	3496	1259	2941	1249	7.851			595	8446		
5/29/2014													13.2	49.1	4.9	32.8	-44.7	105	1401	1239	3567	1233	2964	1256	7.932			537	8469		
5/30/2014													11.4	53.6	4.3	30.7	104	1360	1217	3623	1250	2976	1300	7.959			436	8395			
5/31/2014																			1338	1201	3002	1189	2490	1241	6.830			697	7527		
6/1/2014																			1647	1174	3464	1148	2000	881	7.111			283	7394		
6/2/2014													12.2	49.6	5.4	32.8	-44.5	92	1922	1305	2700	1139	3194	1230	7.815			223	8038		
6/3/2014													11.3	50.2	5.1	33.4	-43.3	94	2022	1247	2811	1131	3265	1215	8.099			160	8259		
6/4/2014													13.2	52.9	4.2	29.7	-44.2	91	1936	1304	2962	1154	3471	1380	8.370			151	8521		
6/5/2014													12.2	48.7	5.6	33.5	-43.7	84	1874	1285	2847	1159	3372	1329	8.093			141	8234		
6/6/2014													13.5	53.6	4.3	28.6	-43.6	88	1890	1286	2711	1129	3406	1276	8.000			317	8317		
6/7/2014																			1886	1313	2496	1182	3080	1276	7.262			743	8006		
6/8/2014																			1668	1306	2462	1141	3083	1303	7.213			673	7886		
6/9/2014													12.1	43.2	7.1	37.6	-42.9	95	1612	1292	2332	1159	2987	1329	6.931			634	7565		
6/10/2014													10.8	40.9	7.4	40.9	-45.0	83	1636	1302	2424	1148	3003	1289	7.063			586	7649		
6/11/2014													10.7	42.4	7.7	39.2	-44.0	85	1653	1300	2492	1136	3031	1279	7.176			536	7711		
6/12/2014													10.5	44.6	6.8	38.1	-44.2	88	1674	1277	2456	1094	3069	1297	7.199			538	7737		
6/13/2014													10.9	41.3	7.2	40.6	-44.4	83	1487	1161	2448	1100	2978	1308	6.711			558	7272		
6/14/2014																			1762	1356	2590	1189	3184	1256	7.536			489	8025		
6/15/2014																			1764	1344	2596	1185	3176	1330	7.536			503	8040		
6/16/2014													10.4	40.8	7.5	41.3	-44.0	95	1880	1367	2628	1204	3361	1345	7.870			436	8306		
6/17/2014													12.1	48.2	5.8	33.9	-43.2	97	2437	1318	2919										

Date	Enclosed Flare										Candlestick Flare FL-100 (Flare Sta 2)										Flare Sta #3 FL-120		Flare Sta #1 FL-140		Total Utility Flare Flow		East Side Flare		Total Flow scfm		
	CH4	CO2	O2	Bal.	Press./Vac.	Gas Inlet Temp (°F)	Flow (scfm)	Flow Set Point	Enclosed Flare Temp	Callidus Flare Temp	Callidus Flow (scfm)	Total Flow (scfm)	CH4	CO2	O2	Bal.	Press./Vac.	Gas Inlet Temp (°F)	Flow (scfm)	Flare Temp.	Flow (scfm)	Flare Temp.	Flow (scfm)	Flare Temp.	Flow (scfm)	Flare Temp.	Flow (scfm)	CH4		Flow (scfm)	scfm
7/29/2014													10.3	41.4	7.6	40.7	-47	89	2103	1340	3097	1180	3637	1375	8.837					8837	
7/30/2014													10.5	42.2	7	40.3	-47	97	2197	1338	3081	1169	3723	1368	9.001					9001	
7/31/2014													12	48.3	5.3	34.4	-47.2	107	2200	1340	3091	1186	3663	1305	8.954					8954	
8/1/2014													11.5	48.2	5.5	34.8	-47	111	2121	1352	3072	1205	3620	1334	8.814					8814	
8/2/2014																			2135	1341	3133	1168	3650	1388	8.886					8888	
8/3/2014																			2235	1307	2952	1157	3484	1311	8.671					8671	
8/4/2014													10.9	48.8	5.5	34.8	-47	119	2272	1366	3206	1216	3806	1404	9.284					9284	
8/5/2014													11.8	44.4	6	37.8	-47.4	113	2241	1349	3193	1262	3748	1382	9.182		32			9215	
8/6/2014													11	44.5	6.8	37.7	-46.4	98	1925	1143	2744	1105	3206	1181	7.875					7875	
8/7/2014													10.6	44	7	38.4	-46.8	87	2040	1334	3135	1243	3496	1399	8.671					8671	
8/8/2014													11.4	49.4	5.6	33.6	-47.7	99	2128	1345	3087	1190	3615	1470	8.830					8830	
8/9/2014													10.7	43	6.9	39.4	-46.4	87	2070	1326	3039	1182	3552	1477	8.661					8661	
8/10/2014																			2128	1343	3102	1194	3652	1492	8.882					8882	
8/11/2014													12	45.2	5.7	37.2	-47.5	101	2153	1331	3096	1249	3674	1490	8.923					8923	
8/12/2014													11.9	47.8	6.2	34.1	-47.5	91	2065	1333	3098	1244	3588	1497	8.751					8751	
8/13/2014													11.4	46.9	6.6	35.1	-46.8	93	2147	1348	3158	1178	3691	1481	8.996					8996	
8/14/2014													11.4	49.4	5.6	33.6	-47.7	99	2240	1343	3048	1216	3588	1469	8.877					8877	
8/15/2014													17.8	55.7	4.5	22	-46.9	111	2229	1356	3152	1234	3759	1455	9.140					9140	
8/16/2014																			2080	1357	3095	1151	3589	1455	8.763					8763	
8/17/2014																			2081	1341	3095	1170	3596	1477	8.772					8772	
8/18/2014													16	49.4	5.5	29.1	-47.2	99	2149	1343	3221	1188	3656	1480	9.026					9026	
8/19/2014													11.4	51.8	5.5	31.3	-50.2	111	2152	1355	3420	1231	3699	1440	9.270					9270	
8/20/2014													12.2	50.5	5.2	32.1	-47.2	119	2107	1334	3203	1203	3713	1463	9.159					9159	
8/21/2014																			2138	1331	3319	1180	3629	1471	9.086					9086	
8/22/2014													12.6	51	3.8	32.6	-46.9	124	2249	1331	3397	1219	3814	1442	9.460					9460	
8/23/2014																			2359	1353	3495	1265	3905	1479	9.759					9759	
8/24/2014																			2275	1257	3256	1181	3458	1351	8.988					8988	
8/25/2014													11.4	57.1	5.8	25.7	-47.1	125	2363	1375	3496	1274	3936	1507	9.794					9794	
8/26/2014													10.4	46.2	6.6	36.8	-47.8	108	2094	1281	3061	1171	3501	1382	8.656					8656	
8/27/2014													10.6	45.7	6.9	36.8	-47.7	102	2156	1365	3325	1205	3815	1471	9.297					9297	
8/28/2014													10.7	45	7.1	37.2	-47.6	102	2073	1375	3170	1261	3863	1514	9.105					9105	
8/29/2014													10.8	48.4	7	33.8	-47.5	113	2012	1374	3200	1185	3749	1510	8.961					8961	
8/30/2014																			1966	1371	3437	1169	3474	1510	8.877					8877	
8/31/2014																			2142	1377	3464	1213	3640	1481	9.245					9245	
9/1/2014																			1954	1297	3383	1195	3154	1368	8.491					8491	
9/2/2014													12.6	48.6	6.8	32	-46.8	96	1670	1343	3740	1294	3136	1460	8.546					8546	
9/3/2014													10.6	46.5	6.8	36.1	-46.7	107	1739	1359	3630	1234	3479	1467	8.848		34			8882	
9/4/2014													10.4	43.6	6.4	39.6	-47.6	105	2298	1390	3323	1214	3381	1479	9.002					9002	
9/5/2014													9.3	39.4	7.9	43.4	-46	103	2320	1377	3321	1277	3467	1446	9.108					9108	
9/6/2014																			2009	1395	3271	1236	3115	1457	8.395					8395	
9/7/2014																			2102	1372	3256	1258	3212	1419	8.569					8569	
9/8/2014													12.6	51.1	4.8	31.5	-47.7	115	2080	1382	3343	1216	3204	1434	8.526					8526	
9/9/2014													11.7	52.3	5.3	30.7	-49.2	116	2037	1364	2960	1187	3526	1504	8.523					8523	
9/10/2014													11	49.1	6.6	33.3	-49.6	95	1916	1346	2806	1179	3721	1457	8.443					8443	
9/11/2014													10.8	44.8	7.5	36.9	-49.4	80	1799	1327	2651	1176	3450	1474	7.900					7900	
9/12/2014													10.8	44	7.9	37.3	-49.6	77	1720	1312	2725	1155	3374	1475	7.819					7819	
9/13/2014																			1782	1335	2740	1138	3477	1449	7.999					7999	
9/14/2014																			1677	1355	2674	1127	3618	1449	8.169					8169	
9/15/2014													11.7	48.2	6.1	34	-50.2	102	1928	1329	2684	1138	3595	1483	8.176					8176	
9/16/2014													11.1	45	7.2	36.7	-50.4	81	1935	1356	2612	1167	3576	1448	8.123					8123	
9/17/2014													11.3	44.9	7.3	36.5	-49.7	81	1927	1379	2704	1176	3503	1487	8.134					8134	
9/18/2014													10.5	43.8	7.6	38.1	-50	85	2058	1364	2741	1247	3716	1467	8.515					8515	
9/19/2014													10.4	43.4	7.3	38.9	-50.3	87	2111	1410	2801	1181	3769	1508	8.681					8681	
9/20/2014																			2259	1360	3125	1162	3156	1398	8.540					8540	
9/21/2014																			2119	1313	3156	1223	3785	1401	8.060					8060	
9/22/2014													11.5	43.5	7.7	37.3	-49.5	81	2177	1388	3165	1298	2978	1403	8.320					8320	
9/23/2014													9.9	43.3	8	38.8	-49.7	82	2210	1407	3257	1277	3008	1406	8.476					8476	
9/24/2014													10	42	7.3	40.7	-50.2	107	2214	1443	3152	1258	2970	1402	8.336		415			8752	
9/25/2014													9.5	41.2	8.2	41.1	-49.4	98	2215	1453	3049	125									

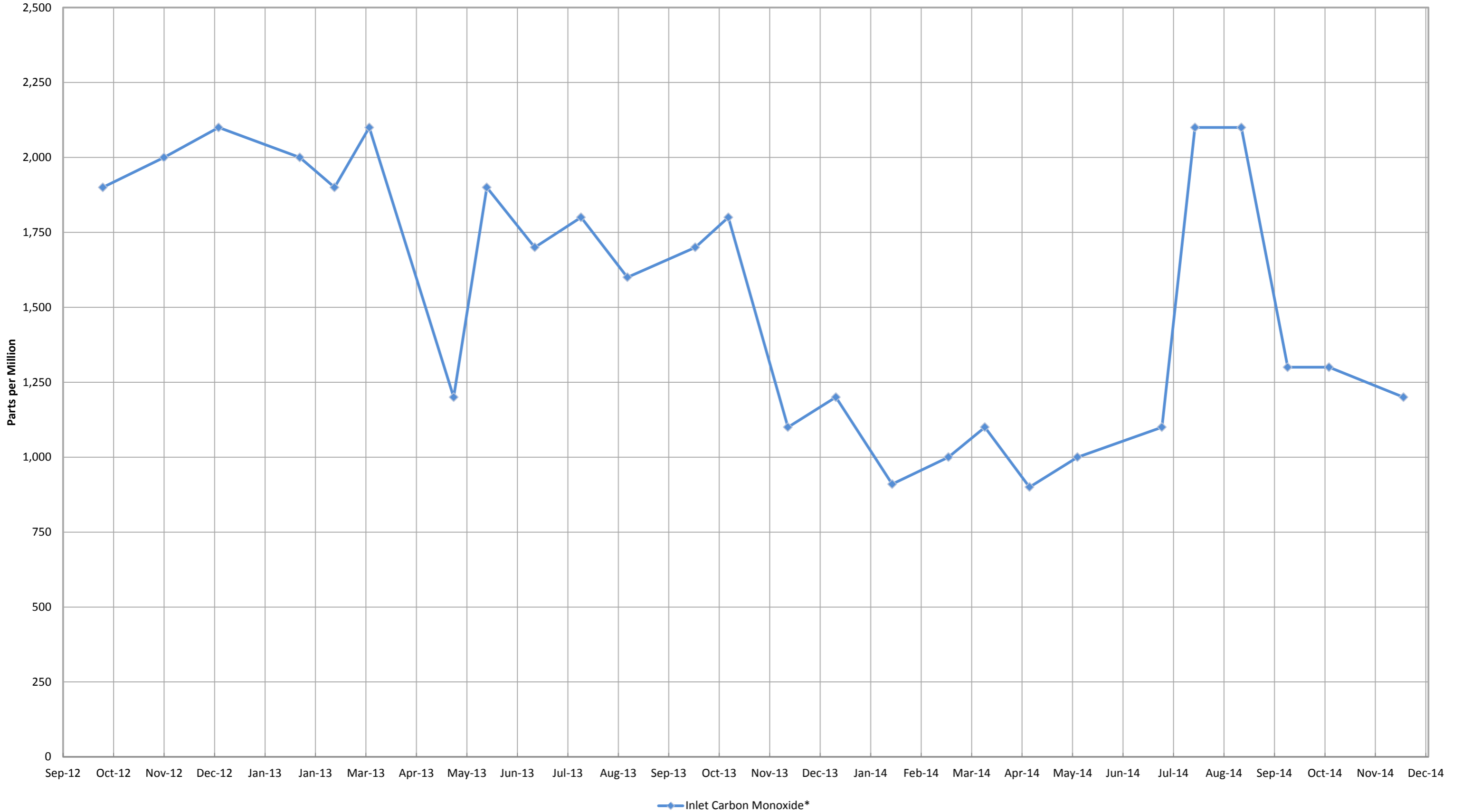
Date	Enclosed Flare							Candlestick Flare FL-100 (Flare Sta 2)							Flare Sta #3 FL-120		Flare Sta #1 FL-140		Total Utility Flare Flow	East Side Flare		Total Flow						
	CH4	CO2	O2	Bal.	Press./Vac.	Gas Inlet Temp (°F)	Flow (scfm)	Flow Set Point	Enclosed Flare Temp	Callidus Flare Temp	Callidus Flow (scfm)	Total Flow (scfm)	CH4	CO2	O2	Bal.	Press./Vac.	Gas Inlet Temp (°F)	Flow (scfm)	Flare Temp.	Flow (scfm)	Flare Temp.	Flow (scfm)	Flare Temp.	Flow (scfm)	CH4	Flow (scfm)	scfm
11/6/2014																			1950	1368	3148	1365	2488	1424	7.585			7585
11/7/2014																			2003	1402	3147	1275	2537	1455	7.687			7687
11/8/2014																			2008	1374	3158	1348	2513	1425	7.680			7680
11/9/2014																			2040	1398	3172	1285	2544	1437	7.756			7756
11/10/2014																			2074	1398	3151	1257	2810	1491	8.034			8034
11/11/2014																			1844	1360	2929	1314	2655	1427	7.428			7428
11/12/2014																			1764	1364	2905	1280	2563	1461	7.232			7232
11/13/2014																			1741	1357	2806	1291	2657	1513	7.204			7204
11/14/2014																			1969	1413	2740	1261	2539	1555	7.247			7247
11/15/2014																			2154	1460	2728	1250	2440	1501	7.321			7321
11/16/2014																			2090	1414	2772	1281	2419	1511	7.280			7280
11/17/2014																			1374	1081	2392	1173	2226	1299	5.992			5992
11/18/2014																			1625	1365	2741	1257	2682	1283	7.048			7048
11/19/2014																			1849	1349	2472	1245	2400	1269	6.720		8	6720
11/20/2014																			1640	1218	2968	1191	2603	1211	7.210		22	7232
11/21/2014																			2090	1428	2896	1202	2734	1368	7.700			7700
11/22/2014																			2341	1504	3025	1184	2966	1354	8.333			8333
11/23/2014																			2133	1436	2864	1197	3147	1347	8.145			8145
11/24/2014																			1821	1377	2537	1297	2859	1245	7.217			7217
11/25/2014																			1879	1391	2437	1179	2811	1331	7.127			7127
11/26/2014																			1958	1401	2474	1065	2811	1359	7.244			7244
11/27/2014																			2050	1406	2193	1123	2733	1329	6.976			6976
11/28/2014																			2354	1430	2234	1094	2838	1353	7.426			7426
11/29/2014																			2268	1435	2312	1116	2963	1339	7.543			7543
11/30/2014																			2313	1433	2510	1157	3077	1306	7.901			7901

Inlet Gas and Temperature*



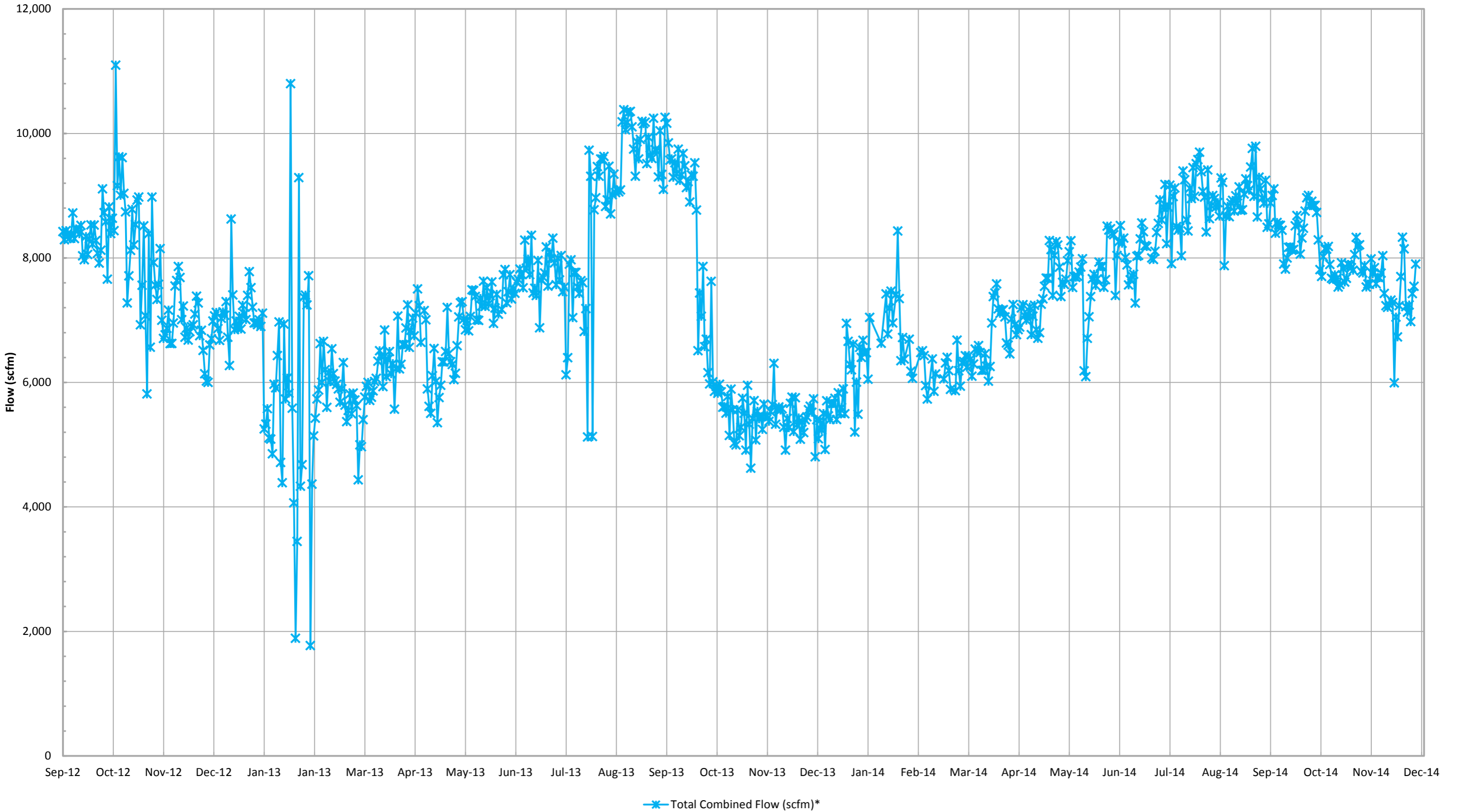
*Gas data collected from Laboratory Reports. Temperature data collected from GEM 2000 field readings.

Inlet Carbon Monoxide*



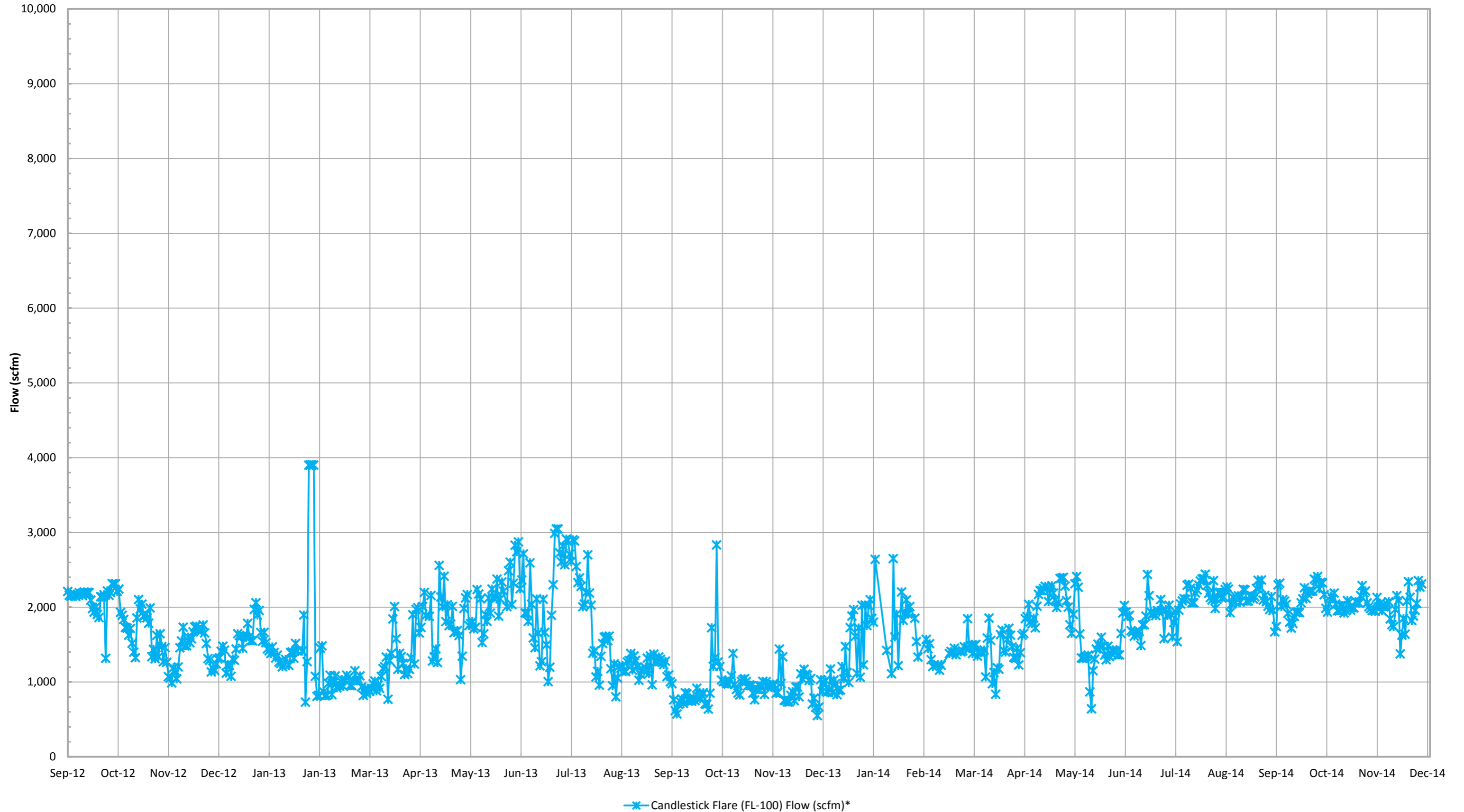
*Data collected from Laboratory Reports.

Total Combined Flow (scfm)*



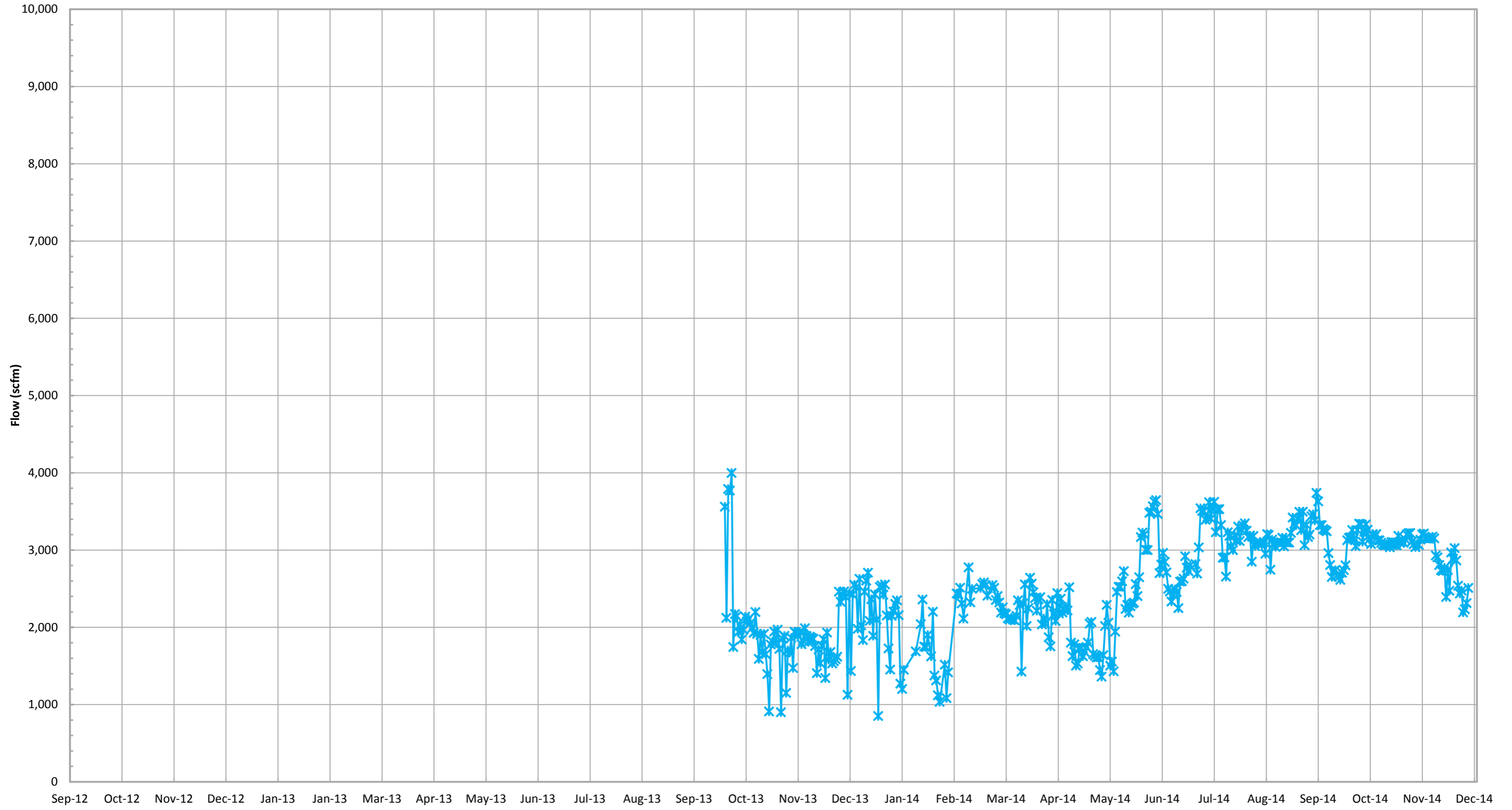
*Combined flow is based on tabulated flow data collected daily from each device.

Candlestick Flare (FL-100) Flow (scfm)*



*Flow is based on tabulated flow data collected daily.

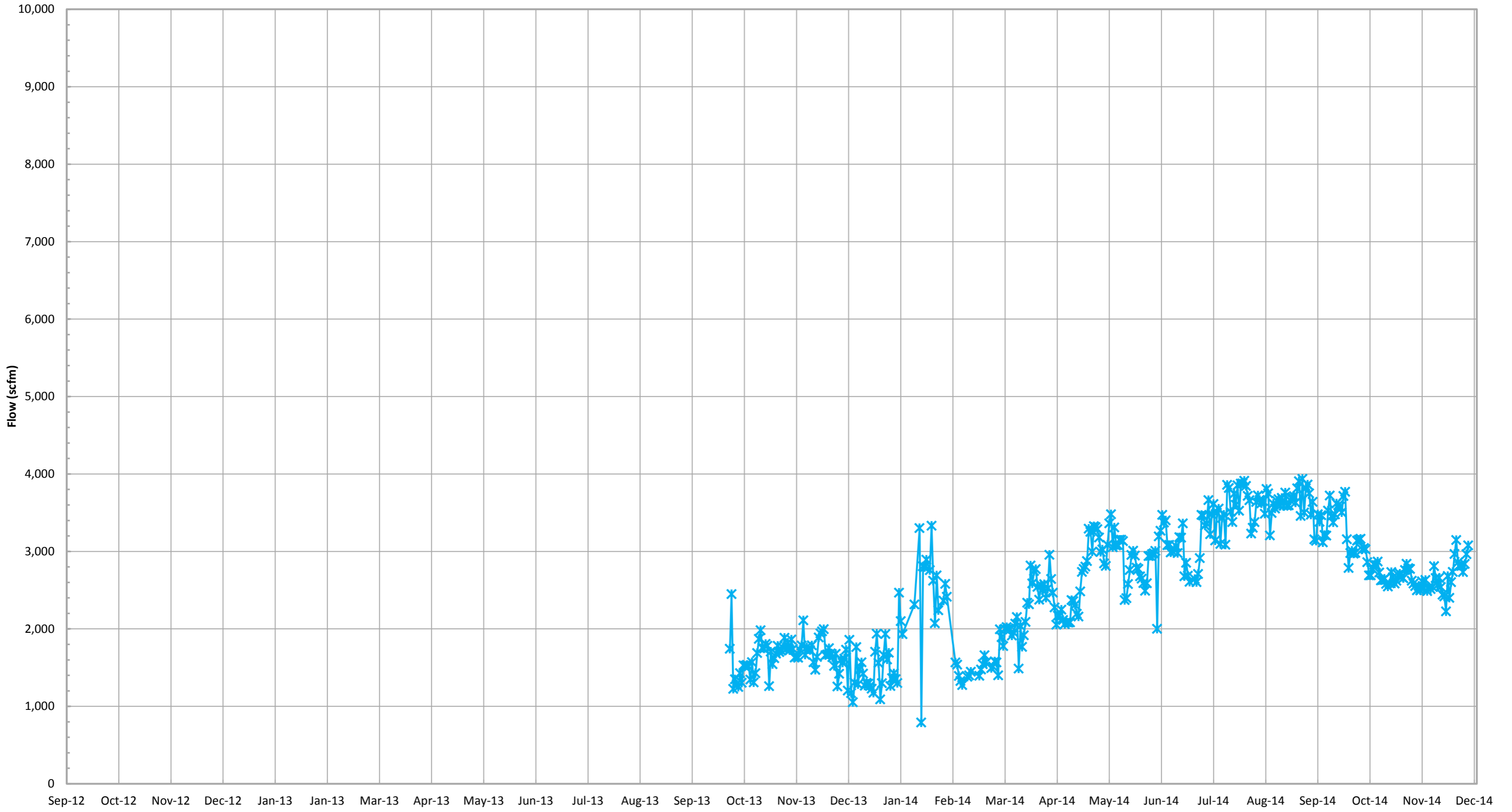
Candlestick Flare (FL-120) Flow (scfm)*



—*— Candlestick Flare (FL-120) Flow (scfm)*

*Flow is based on tabulated flow data collected daily.

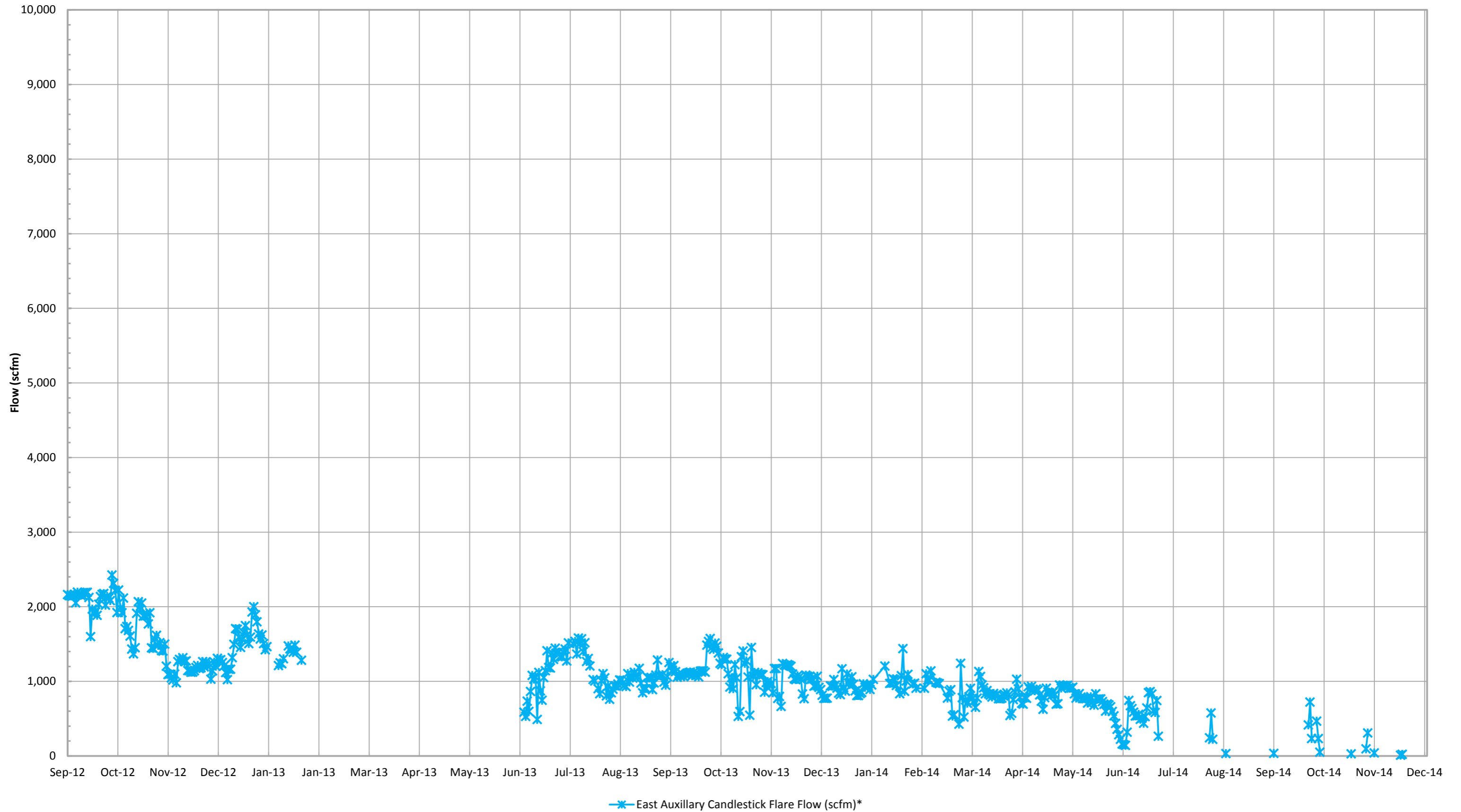
Candlestick Flare (FL-140) Flow (scfm)*



—*— Candlestick Flare (FL-140) Flow (scfm)*

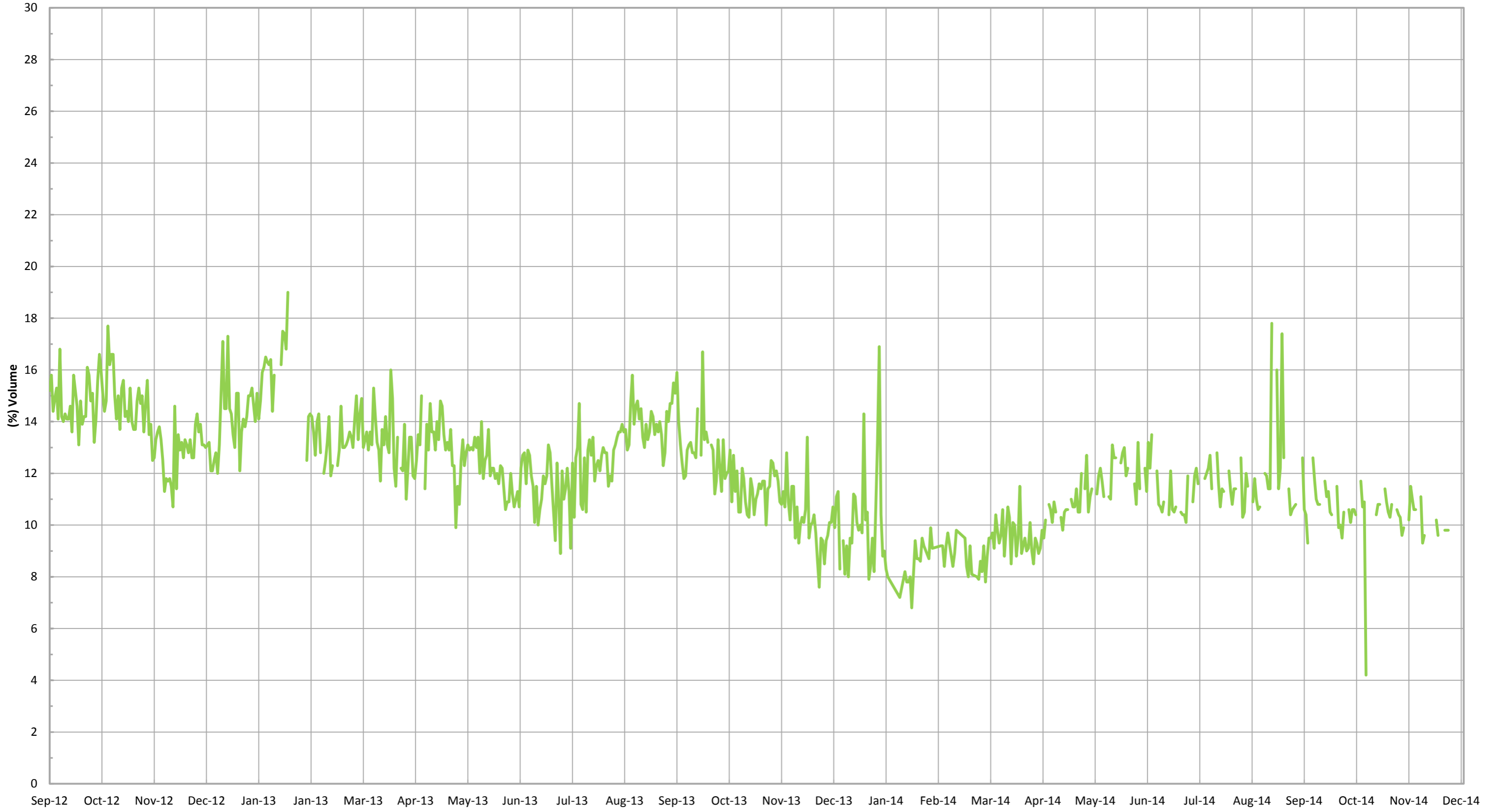
*Flow is based on tabulated flow data collected daily.

East Auxillary Candlestick Flare Flow (scfm)*



*Flow is based on tabulated flow data collected daily.

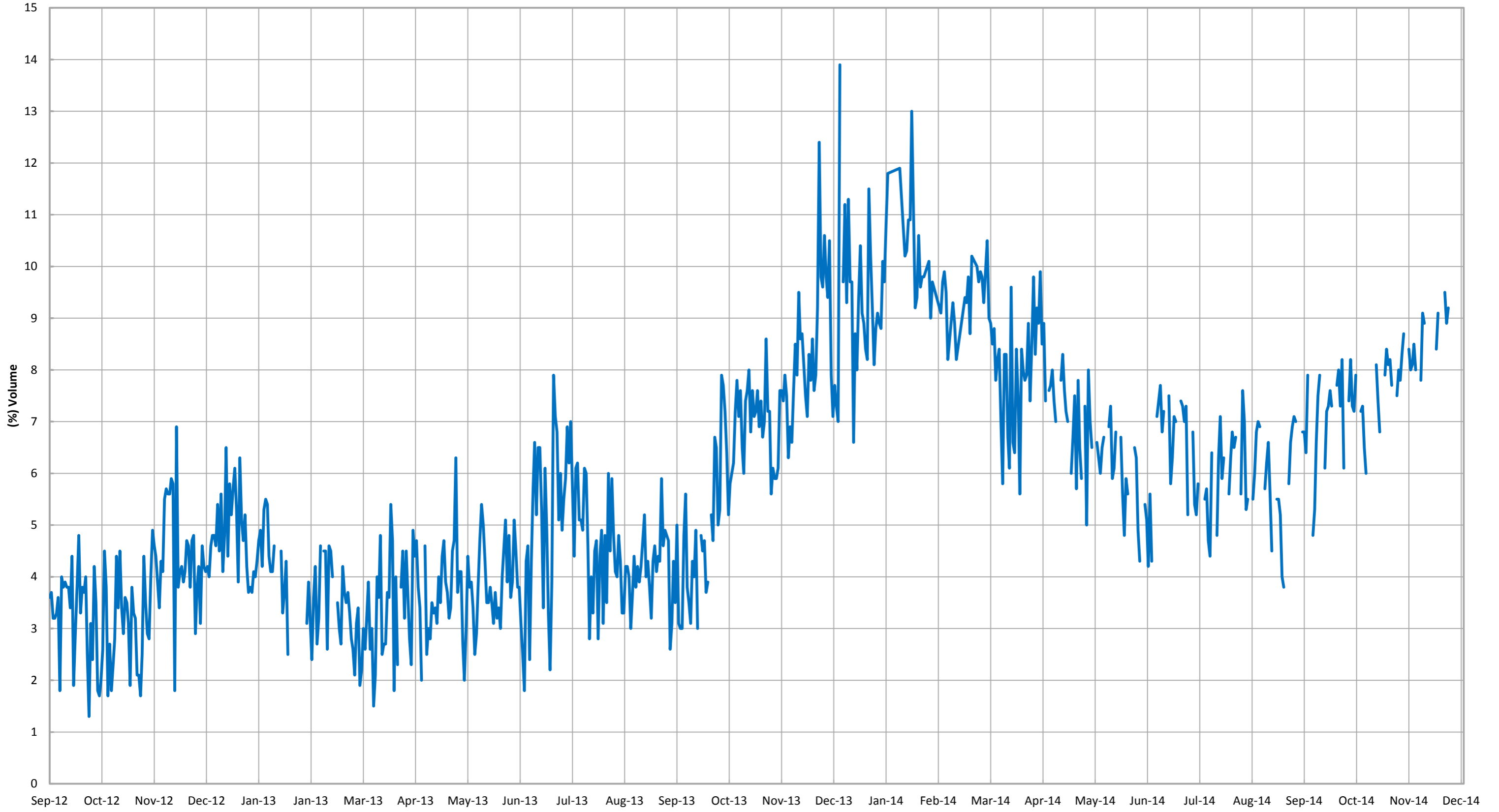
Combined Inlet Methane (GEM 2000)*



— Combined Inlet Methane (GEM 2000)*

*Gas data collected from GEM 2000 field monitoring instrument.

Combined Inlet Oxygen (GEM 2000)*



— Combined Inlet Oxygen (GEM 2000)*

*Gas data collected from GEM 2000 field monitoring instrument.