

Daily Flare Monitoring Data - Bridgeton Landfill
April 2015

Date	Average Device Flow (scfm)*				Total Avg. Flow* (scfm)
	Utility Flare (FL-100)	Utility Flare (FL-120)	Utility Flare (FL-140)	E. Aux. Utility Flare	
4/1/2015	1,473	1,822	1,712	18	5,025
4/2/2015	1,518	1,768	1,740		5,027
4/3/2015	1,346	1,720	1,627		4,693
4/4/2015	1,303	1,746	1,625		4,674
4/5/2015	1,187	1,496	1,570	440	4,693
4/6/2015	1,191	1,205	1,515	587	4,498
4/7/2015	1,421	1,305	1,709	164	4,598
4/8/2015	1,452	1,695	1,766		4,913
4/9/2015	1,350	1,737	1,716		4,804
4/10/2015	1,148	1,241	1,484	98	3,971
4/11/2015	1,250	1,478	1,598		4,326
4/12/2015	1,246	1,626	1,652		4,524
4/13/2015	1,271	1,422	1,652	60	4,405
4/14/2015	1,256	1,452	1,654	42	4,404
4/15/2015	1,278	1,629	1,572		4,479
4/16/2015	1,410	1,682	1,700		4,793
4/17/2015	1,443	1,700	1,792		4,936
4/18/2015	1,412	1,719	1,760		4,891
4/19/2015	1,344	1,642	1,633		4,619
4/20/2015	1,243	1,612	1,489		4,343
4/21/2015	1,277	1,648	1,524		4,450
4/22/2015	1,267	1,622	1,485		4,374
4/23/2015	1,300	1,656	1,573		4,529
4/24/2015	1,289	1,616	1,490		4,395
4/25/2015	1,378	1,576	1,246		4,200
4/26/2015	1,268	1,672	1,490		4,430
4/27/2015	1,289	1,678	1,547		4,514
4/28/2015	1,312	1,667	1,465		4,444
4/29/2015	1,295	1,563	1,657	180	4,694
4/30/2015	1,234	1,526	1,758	264	4,782
				Average	4,581

* Flows normalized to EPA Method 2 flow measurement verification

Inlet Lab Data

Date	CH4	CO2	O2	N2	H2	CO (%)	CO (ppm)
8/29/2012	14	46	5	24	9.6	0.18	1,800
9/25/2012	13	47	5.3	24	10	0.19	1,900
11/1/2012	10	46	5.7	26	10	0.20	2,000
12/4/2012	11	46	5.7	26	10	0.21	2100
1/22/2013	12	47	5.7	25	11	0.20	2000
2/12/2013	11	51	4.9	21	11	0.19	1900
3/5/2013	12	55	3.9	17	13	0.21	2100
4/25/2013	8	32	11	40	8.1	0.12	1200
5/15/2013	11	49	5	20	13	0.19	1900
6/13/2013	9.8	40	7.6	30	10	0.17	1700
7/11/2013	13	47	5.3	22	12	0.18	1800
8/8/2013	12	52	4.3	18	12	0.16	1600
9/18/2013	13	54	3.9	17	11	0.17	1700
10/8/2013	12	50	4.7	20	13	0.18	1800
11/13/2013	8.6	38	8.9	35	9	0.11	1100
12/12/2013	9.1	39	8.6	33	9.6	0.12	1200
1/15/2014	6.4	29	12	45	7.5	0.091	910
2/18/2014	8.3	37	9.5	36	9	0.10	1000
3/12/2014	7.2	36	9.7	36	10	0.11	1100
4/8/2014	8.1	35	10	38	9.1	0.09	900
5/7/2014	9.8	40	8.1	32	9.7	0.10	1000
6/27/2014	11	45	6	25	12	0.11	1100
7/17/2014	10	42	6.7	27	13	0.21	2100
8/14/2014	11	45	5.7	24	13	0.21	2100
9/11/2014	10	44	6.3	26	13	0.13	1300
10/6/2014	9.7	40	7.2	29	12	0.13	1300
11/20/2014	7.4	32	10	39	11	0.12	1200
12/9/2014	6.5	27	12	46	8.3	0.10	1000
1/21/2015	8.3	33	9.8	38	11	0.12	1200
2/10/2015	5.4	24	13	50	7.6	0.079	790
3/18/2015	7.2	30	11	42	10	0.1	1000
4/8/2015	6.8	28	12	44	9.1	0.096	960

Daily Flare Monitoring Data And Inlet Lab Data

Date	Flare Sta #2 FL-100						Flare Sta #3 FL-120		Flare Sta #1 FL-140		Total Utility Flare Flow	East Side Flare		Total Flow		
	CH4	CO2	O2	Bal.	Press./Vac.	Gas Inlet Temp (°F)	Flow (scfm)	Flare Temp.	Flow (scfm)	Flare Temp.	Flow (scfm)	Flare Temp.	Flow (scfm)	CH4	Flow (scfm)	scfm
8/7/2012	16.9	51.9	3.7	27.5	-46	137	1867	1256					1,867	16.1	1908.74	7597.74
8/8/2012	17.2	52.3	3.7	26.8	-45.8	136	1886	1258					1,886	16.1	1844.12	7646.12
8/9/2012	14.7	50.9	4.6	29.8	-47.3	132	1885	1229					1,885	16.1	1893.58	7496.58
8/10/2012	15.3	50.3	4.1	30.3	-47.2	129	1897	1274					1,897	16.1	1886.41	7565.41
8/11/2012	17.2	52.4	3.2	27.2	-47.4	130	1886	1234					1,886	16.1	1767.43	7250.43
8/12/2012	16.6	61.1	1.3	21	-55	140	1770	1180					1,770	16.4	1756.28	6526.28
8/13/2012	16.3	58	2.3	23.4	-56.1	132	1790	1207					1,790	16.4	1756.06	7216.06
8/14/2012	17	56.4	2.3	24.3	-56	132	1800	1237					1,800	16.4	1769.94	7419.94
8/15/2012	19.6	59.5	0.8	20.1	-55.3	142	1771	1249					1,771	16.4	1794.08	7017.08
8/16/2012	17.6	57.9	1.6	22.9	-56	132	1766	1278					1,766	16.4	1723.35	7583.35
8/17/2012	16.3	56.4	2	25.3	-55.9	132	1738	1148					1,738	16.4	1738.9	7440.9
8/18/2012	16.9	56.5	2.2	24.4	-54.1	135	1791	1157					1,791	16.4	1909.41	7596.41
8/19/2012	19.6	57.8	1.2	21.4	-55.7	132	1753	1188					1,753	19	1765.22	7198.22
8/20/2012	18.8	57.2	1.7	22.3	-55.6	134	1731	1262					1,731	19	1721.19	7202.19
8/21/2012	16.8	54.4	2.6	26.2	-55.5	133	1773	1203					1,773	19	1338.2	6930.2
8/22/2012	17.6	57.1	1.7	23.6	-54.8	130	1835	1228					1,835	19	1831.58	7313.58
8/23/2012	17.5	56.5	1.6	24.4	-57.6	130	1869	1215					1,869	19	1849	7572
8/24/2012	16.3	56.8	2.5	24.4	-61.1	136	1976	1294					1,976	19	1960.46	7958.46
8/25/2012	17.3	54.8	2.5	25.4	-61	135	1967	1313					1,967	19	1986.47	7908.47
8/26/2012	17.7	55.9	2.6	23.8	-61.3	132	2009	1310					2,009	15.7	2015.86	7949.86
8/27/2012	15.9	54.3	2.5	27.3	-61.1	130	1960	1265					1,960	15.7	1959.93	7830.93
8/28/2012	15.5	57.4	2.6	24.5	-60.6	130	1993	1347					1,993	15.7	2006.21	7996.21
8/29/2012	15.9	56.6	3	24.5	-68.9	130	2208	1300					2,208	15.7	2201.02	8310.02
8/30/2012	14.4	54.5	3.7	27.4	-70.1	128	2192	1332					2,192	15.7	2181.25	8275.25
8/31/2012	14.2	53.8	3.9	28.1	-71.1	128	2169	1344					2,169	15.7	2189.22	8432.22
9/1/2012	15.2	54	3.6	27.2	-71	124	2209	1145					2,209	15.7	2162	8422
9/2/2012	15.8	54.1	3.7	26.4	-71.6	120	2159	1345	2,159				2,159	14.7	2148.79	8291.79
9/3/2012	14.4	57.1	3.2	25.3	-70.2	130	2144	1302					2,144	14.7	2143.36	8437.36
9/4/2012	14.9	57	3.2	24.9	-70.4	126	2156	1381					2,156	14.7	2142.8	8390.8
9/5/2012	15.3	56	3.3	25.4	-71	124	2174	1309	2,174				2,174	14.7	2164.14	8313.14
9/6/2012	14.1	55.2	3.6	27.1	-70.4	127	2144	1395					2,144	14.7	2050.95	8372.95
9/7/2012	16.8	58.9	1.8	22.5	-69.1	134	2170	1320					2,170	14.7	2194.05	8721.05
9/8/2012	14.2	54	4	27.8	-70.7	122	2192	1323					2,192	14.7	2167.82	8310.82
9/9/2012	14	54.1	3.8	28.1	-70.7	126	2178	1333					2,178	14.4	2152.45	8465.45
9/10/2012	14.3	53.6	3.9	28.2	-70.9	125	2154	1333					2,154	14.4	2158.12	8454.12
9/11/2012	14.1	54	3.8	28.1	-71.1	121	2203	1316					2,203	14.4	2183.63	8385.63
9/12/2012	14.1	53.7	3.8	28.1	-71	122	2175	1360					2,175	14.4	2191.26	8522.26
9/13/2012	14.6	54.8	3.4	27.2	-69.5	120	2199	1324					2,199	14.4	2193.66	8031.66
9/14/2012	13.6	51.9	4.4	30.1	-68.7	116	2194	1330					2,194	14.4	2123.39	7970.39
9/15/2012	15.8	59.4	1.9	22.9	-64.4	108	2093	1320	2,093				2,093	14.4	1598.87	8341.87
9/16/2012	15.2	56.8	2.9	25.1	-61.4	120	1980	1264					1,980	14.7	1967.65	8054.65
9/17/2012	14.6	54.6	3.8	27	-61.4	120	1934	1293					1,934	14.7	1921.85	8305.85
9/18/2012	13.1	52.6	4.8	29.5	-61.5	116	2003	1318					2,003	14.7	1930.82	8529.82
9/19/2012	14.8	56.9	3.3	25	-59.6	126	1902	1330					1,902	14.7	1883.6	8220.6
9/20/2012	13.9	55.2	3.8	27.1	-59.8	120	1859	1244					1,859	14.7	2033.2	8526.2
9/21/2012	14.2	55.7	3.7	26.4	-64.1	120	2139	1280					2,139	14.7	2135.42	8277.42
9/22/2012	14.2	53.4	4	28.4	-63.8	128	2133	1316					2,133	14.7	2164.57	8073.57
9/23/2012	16.1	54.8	2.5	26.6	-62.7	128	2167	1305	2,167				2,167	14.9	2177.31	7916.31
9/24/2012	15.8	61.9	1.3	21	-37	124	1316	1312					1,316	14.9	2020.9	8122.9
9/25/2012	14.8	57.5	3.1	24.6	-65.8	118	2217	1257	2,217				2,217	14.9	2140.01	9108.01
9/26/2012	15.1	58.6	2.4	23.9	-66.2	120	2158	1342					2,158	14.9	2116.01	8727.01
9/27/2012	13.2	54.3	4.2	28.3	-67.8	116	2194	1329					2,194	14.9	2080.27	8579.27
9/28/2012	14.1	56.3	3.5	26.1	-66.2	118	2314	1290	2,314				2,314	14.9	2424.34	7656.34
9/29/2012	15.6	59.8	1.8	22.8	-63.9	133	2306	1437					2,306	14.9	2311.98	8817.98
9/30/2012	16.6	60	1.7	21.7	-63.7	130	2313	1383					2,313	16	2216.35	8389.35
10/1/2012	16	61	2	21	-62.8	120	2212	1403					2,212	16	1921	8636
10/2/2012	15.1	60	2.6	22.3	-62.1	120	2242	1375					2,242	16	2222.46	8437.46
10/3/2012	14.4	49.6	4.5	31.5	-47.4	128	1930	1288					1,930	16	1983.86	11096.86
10/4/2012	14.8	54.8	3.8	26.6	-35	120	1890	1269					1,890	16	1919.07	9161.07
10/5/2012	17.7	61.6	1.7	19	-38.2	126	1836	1269					1,836	16	2115.56	9623.56
10/6/2012	16.2	58.6	2.7	22.5	-37.7	126	1729	1297					1,729	16	1704.82	9004.82
10/7/2012	16.6	60.8	1.8	20.8	-35.6	128	1719	1324					1,719	16.4	1733.19	9611.19
10/8/2012	16.6	59.5	2.3	21.6	-36.4	128	1625	1189					1,625	16.4	1681.9	9034.9
10/9/2012	15	59.1	2.8	23.1	-32	130	1715	1287					1,715	16.4	1605.28	8739.28

Date	Flare Sta #2 FL-100						Flare Sta #3 FL-120		Flare Sta #1 FL-140		Total Utility Flare Flow	East Side Flare		Total Flow		
	CH4	CO2	O2	Bal.	Press./Vac.	Gas Inlet Temp (°F)	Flow (scfm)	Flare Temp.	Flow (scfm)	Flare Temp.	Flow (scfm)	Flare Temp.	Flow (scfm)	CH4	Flow (scfm)	scfm
10/10/2012	14.1	53	4.4	28.5	-44.6	116	1516	1310					1,516	16.4	1431.37	7274.37
10/11/2012	15	55.9	3.4	25.7	-45.1	118	1397	1183					1,397	16.4	1366	7710
10/12/2012	13.7	52.4	4.5	29.4	-43	120	1324	1167					1,324	16.4	1449.14	8120.14
10/13/2012	15.3	54.8	3.4	26.5	-55.2	120	1856	1324					1,856	16.4	1911.41	8779.41
10/14/2012	15.6	57.3	2.9	24.2	-60.6	118	2102	1204					2,102	14.4	2067.13	8208.13
10/15/2012	14.2	53.5	3.6	28.7	-62.9	122	1975	1261					1,975	14.4	1959.57	8534.57
10/16/2012	14.4	52.8	3.5	29.3	-60.3	128	2040	1346					2,040	14.4	2048.91	8928.91
10/17/2012	14	55.8	3.1	27.1	-66.6	122	1885	1308					1,885	14.4	1875.03	8978.03
10/18/2012	15.3	59.9	1.9	22.9	-67.6	120	1892	1160					1,892	14.4	1876.69	6925.69
10/19/2012	14	53	3.8	29.2	-67.5	110	1855	1352					1,855	14.4	1909.05	7559.05
10/20/2012	13.7	53.4	3.3	29.6	-65.8	122	1785	1227					1,785	14.4	1769.5	8514.5
10/21/2012	13.7	54.5	3.2	28.6	-59.3	125	1990	1268					1,990	14.7	1919.8	7069.8
10/22/2012	14.8	61.1	2.1	22	-64	121	1337	1119					1,337	14.7	1447.46	5813.46
10/23/2012	15.3	61.2	2.1	21.4	-62.8	120	1436	1238					1,436	14.7	1439.4	8387.4
10/24/2012	14.7	61.6	1.7	22	-60.1	125	1310	1225					1,310	14.7	1568.55	6563.55
10/25/2012	15	58.7	2.5	23.8	-45.2	130	1623	1238					1,623	14.7	1617.17	8977.17
10/26/2012	13.6	53.4	4.4	28.6	-40.5	114	1334	1305					1,334	14.7	1479.7	7925.7
10/27/2012	14.7	51	3.5	30.8	-50.9	121	1645	1330					1,645	14.7	1518	7563
10/28/2012	15.6	54.9	2.9	26.6	-53.6	118	1472	1275					1,472	14	1411.67	7330.67
10/29/2012	13.5	56	2.8	27.7	-47.3	115	1270	1270					1,270	14	1405.88	7575.88
10/30/2012	13.9	54.3	4	27.8	-44.2	113	1460	1362					1,460	14	1498.67	8150.67
10/31/2012	12.5	52.5	4.9	30.1	-38.6	115	1261	1345					1,261	14	1201.8	6996.8
11/1/2012	12.6	51.7	4.6	31.1	-35.9	102	1071	1060					1,071	14	1090.56	6706.56
11/2/2012	13.3	51.1	4.4	31.2	-38.8	100	1050	985					1,050	14	1094.39	6764.39
11/3/2012	13.6	53.4	3.9	29.1	-47.7	118	988	1290					988	14	1046.67	6867.67
11/4/2012	13.8	54.7	3.4	28.1	-48.2	123	1188	1172					1,188	13.2	1017.51	7161.51
11/5/2012	13.3	52.5	4.3	29.9	-47.1	110	1147	1243					1,147	13.2	1097.54	6621.54
11/6/2012	12.5	52.4	4.1	31	-37.1	110	1040	1113					1,040	13.2	979.62	6624.62
11/7/2012	11.3	49.8	5.5	33.4	-38.4	110	1200	1289					1,200	13.2	1263.49	6953.49
11/8/2012	11.8	52.3	5.7	30.2	-44.5	110	1456	1371					1,456	13.2	1294.14	7548.14
11/9/2012	11.7	51.3	5.6	31.4	-46.5	114	1547	1336					1,547	13.2	1280.36	7635.36
11/10/2012	11.8	48.5	5.6	34.1	-56.6	113	1732	1328					1,732	13.2	1315.82	7862.82
11/11/2012	11.5	48	5.9	34.6	-50.4	113	1483	1195					1,483	13.1	1265.42	7684.42
11/12/2012	10.7	48.7	5.8	34.8	-51.3	101	1484	1369					1,484	13.1	1272.72	7006.72
11/13/2012	14.6	63	1.8	20.6	-29	120	1601	1228					1,601	13.1	1143.56	7227.56
11/14/2012	11.4	45.5	6.9	36.2	-51.7	110	1526	1097					1,526	13.1	1141.75	6724.75
11/15/2012	13.5	54.1	3.8	28.6	-47.4	114	1576	1173					1,576	13.1	1121.96	6870.96
11/16/2012	12.9	54.6	4.1	28.5	-48.2	116	1669	1113					1,669	13.1	1123.28	6679.28
11/17/2012	13.2	53.9	4.2	28.7	-49.3	112	1735	1107					1,735	13.1	1142.38	6815.38
11/18/2012	12.6	55.8	3.9	27.8	-48.3	118	1747	1128					1,747	12.9	1183.66	6895.66
11/19/2012	13.3	56.7	4.1	25.9	-47.6	114	1705	1166					1,705	12.9	1211.95	6924.95
11/20/2012	13.1	54	4.7	28.2	-46.3	112	1701	1111					1,701	12.9	1170.78	7097.78
11/21/2012	12.8	52.4	4.6	30.2	-55.7	110	1685	1133					1,685	12.9	1180.24	7385.24
11/22/2012	13.3	54.9	3.8	28	-49.5	112	1762	1244					1,762	12.9	1262.76	7275.76
11/23/2012	12.6	55.6	4.7	27.1	-53.9	108	1655	1214					1,655	12.9	1192.78	6748.78
11/24/2012	12.6	52.3	4.8	30.3	-52.3	103	1512	1342					1,512	12.9	1261.76	6836.76
11/25/2012	13.9	60.5	2.9	22.7	-47.3	108	1312	1316					1,312	13.8	1212.51	6512.51
11/26/2012	14.3	54.4	3.8	27.5	-47.1	109	1289	1209					1,289	13.8	1233.18	6139.18
11/27/2012	13.6	54	4.2	28.2	-38.1	106	1134	1065					1,134	13.8	1028.61	6020.61
11/28/2012	13.9	60.4	3.1	22.6	-41.4	110	1185	1076					1,185	13.8	1140.08	5999.08
11/29/2012	13.1	53.6	4.6	28.7	-39.8	110	1153	1150					1,153	13.8	1257.68	6600.68
11/30/2012	13.1	52.8	4.2	29.9	-42.1	110	1240	1181					1,240	13.8	1199.64	6699.64
12/1/2012	13	57.3	4.1	25.6	-42.7	114	1307	1360					1,307	13.8	1307.9	6984.9
12/2/2012	13.1	54.1	4.2	28.6	-43.5	116	1323	1257					1,323	13.9	1280.65	7068.65
12/3/2012	13.2	55	4	27.8	-45.2	116	1409	1274					1,409	13.9	1288.83	7124.83
12/4/2012	12.1	55.6	4.6	27.7	-44.3	110	1478	1254					1,478	13.9	1250.89	6864.89
12/5/2012	12.1	52.1	4.8	31	-43.1	109	1425	1157					1,425	13.9	1206.54	6672.54
12/6/2012	12.5	55	4.8	27.7	-46.2	109	1118	1162					1,118	13.9	1117.08	7028.08
12/7/2012	12.8	51.3	4.6	31.3	-48.3	112	1230	1095					1,230	13.9	1021.82	7131.82
12/8/2012	12	49.2	5.4	33.4	-48	108	1220	1238					1,220	13.9	1158.85	7078.85
12/9/2012	13.1	51.8	4.5	30.6	-45.9	110	1075	1115					1,075	13.9	1162.03	7297.03
12/10/2012	15.1	47.7	5.6	31.6	-42.2	84	1308	1350					1,308	13.9	1316.92	6723.92
12/11/2012	17.1	51.9	4.1	26.9	-51.2	86	1289	1337					1,289	13.9	1493.74	6269.74
12/12/2012	14.5	54.5	4.8	26.2	-45.4	105	1440	1200					1,440	13.9	1706.4	8625.4
12/13/2012	14.5	46.8	6.5	32.2	-52.7	100	1644	1388					1,644	13.9	1696.61	7403.61
12/14/2012	17.3	50.2	4.4	28.1	-42.1	110	1620	1393					1,620	13.9	1592.65	6846.65
12/15/2012	14.5	46	5.8	33.7	-47.7	112	1607	1273					1,607	13.9	1453.88	6985.88

Date	Flare Sta #2 FL-100						Flare Sta #3 FL-120		Flare Sta #1 FL-140		Total Utility Flare Flow	East Side Flare		Total Flow		
	CH4	CO2	O2	Bal.	Press./Vac.	Gas Inlet Temp (°F)	Flow (scfm)	Flare Temp.	Flow (scfm)	Flare Temp.	Flow (scfm)	Flare Temp.	Flow (scfm)	CH4	Flow (scfm)	scfm
12/16/2012	14.3	50.5	5.2	30	-44.7	124	1451	1149					1,451	13.9	1561.4	6874.4
12/17/2012	13.5	49.1	5.7	31.7	-47	95	1612	1326					1,612	13.9	1652.88	7061.88
12/18/2012	13	48.2	6.1	32.7	-47.8	90	1597	1390					1,597	13.9	1745.62	6855.62
12/19/2012	15.1	47.2	5.3	32.4	-45.8	100	1782	1372					1,782	13.9	1622.55	7239.55
12/20/2012	15.1	57.6	3.9	23.4	-44	98	1602	1074					1,602	13.9	1503.98	7099.98
12/21/2012	12.1	45.4	6.3	36.2	-43.2	75	1551	1226					1,551	13.9	1592.09	7008.09
12/22/2012	13.6	54.4	5.1	26.9	-43.5	90	1550	1145					1,550	13.9	1929.84	7395.84
12/23/2012	14.1	51	4.7	30.2	-47.8	99	1969	1227					1,969	13.8	1999.6	7779.6
12/24/2012	13.8	51.2	5.2	29.8	-47.7	90	2059	1131					2,059	13.8	1890.03	7521.03
12/25/2012	14.2	51.6	4.2	30	-46.3	95	1895	1242					1,895	13.8	1797.74	7206.74
12/26/2012	15	58.4	3.7	22.9	-46.1	91	1956	1231					1,956	13.8	1635.39	6954.39
12/27/2012	15	53.2	3.8	28	-45.3	102	1662	1137					1,662	13.8	1565.15	6957.15
12/28/2012	15.3	55.1	3.7	25.9	-44.9	105	1543	1246					1,543	13.8	1619.54	6926.54
12/29/2012	14.6	54.9	4.1	26.4	-45.1	98	1664	1066					1,664	13.8	1505.65	7004.65
12/30/2012	14	54.3	4	27.7	-44.3	109	1523	1067					1,523	14.5	1421.63	6897.63
12/31/2012	15.1	52.7	4.3	27.9	-43.3	110	1442	1119					1,442	14.5	1464.39	7111.39
1/1/2013	14.1	54.7	4.7	26.5	-42.8	102	1418	1188					1,418	0		5251
1/2/2013	14.8	51.4	4.9	28.9	-43	106	1378	1077					1,378	0		5329
1/3/2013	15.9	52	4.2	27.9	-39	102	1468	1302					1,468	0		5578
1/4/2013	16.1	47.9	5.3	30.7	-39	104	1393	1163					1,393	0		5109
1/5/2013	16.5	48	5.5	30	-39.1	92	1321	1353					1,321	0		5089
1/6/2013	16.3	49	5.4	29.3	-39.4	92	1358	1321					1,358	0		4852
1/7/2013	16.2	53.3	4.4	26.1	-38.1	90	1265	1347					1,265	0	1210.959259	5970.959259
1/8/2013	16.4	52.7	4.1	26.8	-38.6	92	1247	1167					1,247	0	1246.603472	5912.603472
1/9/2013	14.4	55.3	4.1	26.2	-37.2	100	1203	1071					1,203	0	1234.339583	6429.339583
1/10/2013	15.8	53.3	4.6	26.3	-37.2	100	1243	1321					1,243	0	1301.010965	6971.010965
1/11/2013							1302	968					1,302	0		4713
1/12/2013													0	0		4388
1/13/2013							1221	1036					1,221	0	1473.770774	6935.770774
1/14/2013	16.2	51.5	4.5	27.8	-29.1	90	1394	1318					1,394	0	1433.536607	5731.536607
1/15/2013	17.5	57.2	3.3	22	-26.7	102	1401	1223					1,401	0	1421.910417	6067.910417
1/16/2013	17.4	53.8	3.7	25.1	-26.3	94	1316	1302					1,316	0	1388.153472	5826.153472
1/17/2013	16.8	51.7	4.3	27.2	-21.4	80	1514	1280					1,514	0	1484.151389	10800.15139
1/18/2013	19	58.1	2.5	20.4	-21.2	105	1413	1136					1,413	0	1389.422272	5584.422272
1/19/2013													0	0		4064
1/20/2013													0	0		1888
1/21/2013	14.1	52.4	4.8	28.7	-27.4	76	1411	1089					1,411	0	1282	3445
1/22/2013							1894	1028					1,894	0		9289
1/23/2013							730	1575					730	0		4330
1/24/2013	11.7	53	5.3	30	79.5	82	1271	894					1,271	0		4677
1/25/2013							3900	826					3,900	0		7369
1/26/2013							3901	896					3,901	0		7401
1/27/2013							3901	894					3,901	0		7243
1/28/2013							3900	1028					3,900	0		7714
1/29/2013	12.5	60.2	3.1	24	111.6	105	1074	1152					1,074	0		1771
1/30/2013	14.2	55.7	3.9	26.2	74.4	103	806	1049					806	0		4365
1/31/2013	14.3	58.8	3.2	23.7	49.3	80	820	902					820	0		5140
2/1/2013	14.2	61.3	2.4	22.1	74.9	90	1452	974					1,452	0		5424
2/2/2013	13.6	58.7	3.6	24.1	25.1	81	1483	1014					1,483	0		5734
2/3/2013	12.7	56.4	4.2	26.7	40.2	80	868	1151					868	0		5878
2/4/2013	14	61.5	2.7	21.8	46.2	100	814	958					814	0		6622
2/5/2013	14.3	58.8	3.2	23.7	49.3	80	820	902					820	0		6000
2/6/2013	12.8	55.2	4.6	27.4	75.1	110	981	800					981	0		6658
2/7/2013							1089	836					1,089	0		6203
2/8/2013	12	57.1	4.5	26.4	57.8	80	832	1053					832	0		5597
2/9/2013	12.5	55.8	4.5	27.2	83.5	90	994	857					994	0		6154
2/10/2013	13.2	60.6	2.6	23.6	89.6	90	1080	1265					1,080	0		6009
2/11/2013	14.2	56.7	4.6	24.5	72.7	100	920	1023					920	0		6540
2/12/2013	11.9	55.8	4.5	27.8	64.5	90	950	695					950	0		6140
2/13/2013	12.3	57.4	4	26.3	78	92	965	860					965	0		6021
2/14/2013							1035	977					1,035	0		5968
2/15/2013							941	1123					941	0		5895
2/16/2013	12.3	56.2	3.5	28	70.1	72	1026	966					1,026	0		5679
2/17/2013	12.9	57.6	3	26.5	83.5	90	1090	1144					1,090	0		5898
2/18/2013	14.6	60.1	2.7	22.6	68.3	100	1060	1130					1,060	0		6317
2/19/2013	13	56.8	4.2	26	61.8	70	950	1217					950	0		5633
2/20/2013	13	57.6	3.7	25.7	59.1	60	951	813					951	0		5369

Date	Flare Sta #2 FL-100						Flare Sta #3 FL-120		Flare Sta #1 FL-140		Total Utility Flare Flow	East Side Flare		Total Flow		
	CH4	CO2	O2	Bal.	Press./Vac.	Gas Inlet Temp (°F)	Flow (scfm)	Flare Temp.	Flow (scfm)	Flare Temp.	Flow (scfm)	Flare Temp.	Flow (scfm)	CH4	Flow (scfm)	scfm
2/21/2013	13.1	62.8	3.5	20.6	65	60	1021	863					1,021	0		5548
2/22/2013	13.3	62	3.7	21	70.4	80	1150	1088					1,150	0		5813
2/23/2013	13.6	62.7	3.3	20.4	71.4	85	1011	891					1,011	0		5496
2/24/2013	13.4	62.5	2.8	21.3	85.4	105	1015	1088					1,015	0		5828
2/25/2013	13	60.5	2.6	23.9	87.2	100	1080	1159					1,080	0		5717
2/26/2013	14.1	63.5	2.1	20.3	59.5	75	935	889					935	0		5626
2/27/2013	15	59.3	3.1	22.6	40.4	60	818	1226					818	0		4433
2/28/2013	13.3	60.1	3.4	23.2	57.7	72	908	1218					908	0		4995
3/1/2013	14.3	66.1	1.9	17.7	55.8	70	848	952					848	0		4966
3/2/2013	14.9	64.3	2.2	18.6	60.4	70	906	1098					906	0		5401
3/3/2013	13	61	3	23	78.7	100	874	708					874	0		5764
3/4/2013	13.3	66.6	2.6	17.5	78.6	100	913	1247					913	0		5937
3/5/2013	13.6	65.6	3.2	17.6	72.1	80	976	1231					976	0		5998
3/6/2013	12.9	62.4	3.9	20.8	74.8	90	1012	1149					1,012	0		5709
3/7/2013	13.6	64.6	2.6	19.2	74.2	110	879	974					879	0		5761
3/8/2013	13.1	63.3	3	20.6	81.9	100	957	1080					957	0		5863
3/9/2013	15.3	64.9	1.5	18.3	74.2	100	915	1266					915	0		6015
3/10/2013	14.2	65.5	2.1	18.2	76.2	80	1073	1015					1,073	0		6065
3/11/2013	13.2	60.2	4	22.6	50.7	90	1178	1165					1,178	0		6339
3/12/2013	12.9	54	3.6	29.5	65.5	90	1202	1088					1,202	0		6508
3/13/2013	11.7	51.6	4.8	31.9	79.1	90	1332	1097					1,332	0		6412
3/14/2013	13.7	58.3	2.5	25.5	32	85	768	1174					768	0		5932
3/15/2013	13.1	60.5	2.7	23.7	73	120	1284	943					1,284	0		6842
3/16/2013	14.2	56.9	2.7	26.2	75.8	100	1381	1008					1,381	0		6091
3/17/2013	13.1	53.7	3.7	29.5	66.7	90	1842	985					1,842	0		6368
3/18/2013	12.8	57.9	3.6	25.7	70.1	90	2009	1219					2,009	0		6496
3/19/2013	16	49.5	5.4	29.1	83.3	90	1578	1125					1,578	0		6137
3/20/2013	14.9	52	4.7	28.4	53.9	80	1167	1268					1,167	0		6301
3/21/2013	12.2	59.2	1.8	26.8	48	80	1383	789					1,383	0		5569
3/22/2013	11.5	54.7	4	29.8	77.2	100	1339	830					1,339	0		6219
3/23/2013	13.4	71.8	2.3	12.5	45.6	95	1247	1068					1,247	0		7066
3/24/2013							1099	1191					1,099	0		6216
3/25/2013	12.2	60.8	3.8	23.2	44.5	70	1177	1138					1,177	0		6288
3/26/2013	12.1	52.9	4.5	30.5	53.5	90	1112	1075					1,112	0		6610
3/27/2013	13.9	56.8	3.2	26.1	55.5	100	1167	791					1,167	0		6604
3/28/2013	11	55.2	4.5	29.3	68.7	100	1322	977					1,322	0		6873
3/29/2013	12.1	57.8	3.7	26.4	62.7	120	1898	885					1,898	0		7246
3/30/2013	13.4	57.4	2.8	26.4	102	90	1238	1125					1,238	0		6562
3/31/2013	13.4	60.8	2.3	23.5	72.2	110	1970	945					1,970	0		6837
4/1/2013	11.9	54	4.9	29.2	39.6	100	1994	1066					1,994	0		7033
4/2/2013	11.8	53	4.4	30.8	44.5	90	1655	780					1,655	0		6746
4/3/2013	12.5	53.3	4.7	29.5	55.4	90	1728	1001					1,728	0		7112
4/4/2013	13.5	55.9	3.8	26.8	58	120	2008	930					2,008	0		7501
4/5/2013	13.1	57.1	3.4	26.4	60.5	120	2196	800					2,196	0		7231
4/6/2013	15	59.6	2	23.4	61.6	124	1889	1266					1,889	0		6641
4/7/2013													0			
4/8/2013	11.4	58.4	4.6	25.6	54.1	130	1877	1034					1,877	0		7153
4/9/2013	13.9	58.8	2.5	24.8	58.3	110	2156	1305					2,156	0		7006
4/10/2013	12.9	58.6	3	25.5	55	110	1279	969					1,279	0		5894
4/11/2013	14.7	57.1	2.8	25.4	29.1	90	1335	1093					1,335	0		5615
4/12/2013	13.6	57	3.5	25.9	66.3	90	1441	1223					1,441	0		5503
4/13/2013	13.6	56	3.3	27.1	56.2	106	1259	944					1,259	0		6107
4/14/2013	12.9	57.3	3.4	26.4	50	120	2558	1239					2,558	0		6544
4/15/2013	14	58	3.1	24.9	63.9	100	2135	809					2,135	0		6014
4/16/2013	13.3	56.2	4	26.5	58.2	80	2005	952					2,005	0		5351
4/17/2013	14.8	55.1	3.5	26.6	56.8	104	2413	827					2,413	0		5756
4/18/2013	14.6	55.1	4.4	25.9	38.4	75	1808	1256					1,808	0		5954
4/19/2013	13.5	52.6	4.7	29.2	36.8	76	2032	1119					2,032	0		6331
4/20/2013	12.9	55	3.9	28.2	36.8	90	1753	992					1,753	0		6329
4/21/2013	13.2	54.1	3.7	29	38.3	90	1773	1090					1,773	0		6496
4/22/2013	12.9	63.9	3.2	20	41.2	106	2011	963					2,011	0		7205
4/23/2013	13.7	56.5	3.4	26.4	53.1	90	1660	901					1,660	0		6462
4/24/2013	12.3	53.4	4.5	29.8	55.4	88	1675	1099					1,675	0		6334
4/25/2013	12.3	51.9	4.7	31.1	58.2	92	1687	968					1,687	0		6286
4/26/2013	9.9	48.5	6.3	35.3	63.4	92	1620	1128					1,620	0		6042
4/27/2013	11.5	55.2	3.7	29.6	47.1	88	1029	908					1,029	0		6145
4/28/2013	10.8	55.2	4.1	29.9	47.7	87	1345	985					1,345	0		6588

Date	Flare Sta #2 FL-100						Flare Sta #3 FL-120		Flare Sta #1 FL-140		Total Utility Flare Flow	East Side Flare		Total Flow		
	CH4	CO2	O2	Bal.	Press./Vac.	Gas Inlet Temp (°F)	Flow (scfm)	Flare Temp.	Flow (scfm)	Flare Temp.	Flow (scfm)	Flare Temp.	Flow (scfm)	CH4	Flow (scfm)	scfm
4/29/2013	12.5	51.4	4.1	32	45.6	102	1982		928				1,982	0		7050
4/30/2013	13.3	58.7	2.7	25.3	49.5	110	2124		1225				2,124	0		7278
5/1/2013	12.3	59.6	2	26.1	44	118	2168		831				2,168	0		7298
5/2/2013	12.8	57.2	3	27	45	106	1752		1110				1,752	0		7014
5/3/2013	13.1	52.8	4.4	29.7	50.4	72	1779		1078				1,779	0		6844
5/4/2013	12.9	54.1	3.8	29.2	52.1	78	1810		850				1,810	0		6996
5/5/2013	13	54.8	3.9	28.3	54.7	80	1707		976				1,707	0		6826
5/6/2013	12.9	56	3.4	27.7	53	96	1730		1124				1,730	0		7059
5/7/2013	13.4	60.7	2.5	23.4	43.9	110	2235		956				2,235	0		7487
5/8/2013	13	58.9	2.9	25.2	51.1	114	2176		458				2,176	0		7476
5/9/2013	13.4	55.4	3.8	27.7	47.6	107	2110		785				2,110	0		7380
5/10/2013	12	54	4.7	29.3	43.4	93	1527		1005				1,527	0		7004
5/11/2013	14	54	5.4	26.6	43.1	96	1642		1154				1,642	0		6996
5/12/2013	11.8	51.4	5	31.8	43.8	89	1900		1100				1,900	0		7349
5/13/2013	12.5	53.6	4.3	29.6	47.5	100	1810		892				1,810	0		7227
5/14/2013	12.7	58.6	3.5	25.2	51.5	108	2121		1097				2,121	0		7627
5/15/2013	13.7	56.1	3.5	26.7	47.1	105	1920		1022				1,920	0		7219
5/16/2013	11.9	56.2	3.8	28.1	44.5	106	2242		704				2,242	0		7520
5/17/2013	12.2	57.1	3.5	27.2	50.9	106	2121		909				2,121	0		7258
5/18/2013	12.2	58.1	3.1	26.6	50.3	126	2141		842				2,141	0		7392
5/19/2013	11.8	58.4	3.7	25.6	44.3	136	2375		962				2,375	0		7614
5/20/2013	12	58	3.2	26.5	50.2	121	1881		1215				1,881	0		6947
5/21/2013	11.6	58.9	3.4	26.1	47	124	2112		1009				2,112	0		7194
5/22/2013	12.3	58.4	3	26.3	46.9	128	2337		1171				2,337	0		7414
5/23/2013	12.2	54.6	4	29.2	47.5	117	2214		1271				2,214	0		7094
5/25/2013	10.6	53.8	5.1	30.5	46.3	124	2007		1047				2,007	0		7170
5/26/2013	10.9	56.3	3.9	28.9	50.2	136	2488		1038				2,488	0		7729
5/27/2013	10.9	52.5	4.8	31.8	48.6	136	2601		894				2,601	0		7814
5/28/2013	12	56.3	3.6	28.1	45.4	134	2034		1080				2,034	0		7277
5/29/2013	11.2	57.9	3.9	27	41.7	137	2321		1210				2,321	0		7456
5/30/2013	10.7	53.1	5.1	31.1	40.8	137	2828		1057				2,828	0		7731
5/31/2013	11	53	4.5	30.5	40.3	138	2741		540				2,741	0		7338
6/1/2013	11.3	56.1	3.8	28.2	41.2	124	2873		1220				2,873	0		7501
6/2/2013	10.7	57.6	3.8	27.9	50.3	126	2245		1053				2,245	0		7431
6/3/2013	12.2	60.4	3.1	24.3	57.3	128	2364		959				2,364	0		7609
6/4/2013	12.7	58.7	2.5	26.1	50.1	146	2713		822				2,713	0		7654
6/5/2013	12.8	60.6	1.8	24.8	54.1	153	1922		703				1,922	0	586	7821
6/6/2013	11.6	54.4	4.3	29.7	52.3	145	1918		1139				1,918	0	529	7735
6/7/2013	12.9	49.1	4.6	33.4	54.7	142	1809		997				1,809	0	734	7519
6/8/2013	12.7	58.3	2.4	26.6	48.9	154	2592		780				2,592	0	596	8285
6/9/2013	11.9	54.9	4.3	28.9	56.8	147	2038		1081				2,038	0	864	7835
6/10/2013	11.5	49.1	5.7	33.7	51.3	147	1589		1222				1,589	0	1079	7982
6/11/2013	10.1	47.5	6.6	35.8	53.3	148	1457		908				1,457	0	1028	7730
6/12/2013	11.5	47.5	5.2	35.8	52.6	152	2110		979				2,110	0	1056	8363
6/13/2013	10	43.9	6.5	39.6	54.7	140	1653		963				1,653	0	488	7435
6/14/2013	10.6	47.4	6.5	35.5	63.2	142	1214		912				1,214	0	1119	7511
6/15/2013	11	50.5	5.3	33.2	60.7	146	1269		943				1,269	0	872	7394
6/16/2013	11.9	58.1	3.4	26.6	54.2	148	2105		891				2,105	0	745	7960
6/17/2013	11.6	44.4	6.1	37.9	54.1	102	1664		480				1,664	0	1051	6877
6/18/2013	11.9	54.9	4.9	58.3	58.3	146	1496		981				1,496	0	1141	7643
6/19/2013	13.1	58.8	3.3	24.8	64	145	1004		1017				1,004	0	1409	7691
6/20/2013	12.8	59	2.2	26	64.4	147	1196		1134				1,196	0	1184	7757
6/21/2013	11.6	55.5	3.9	26	63.5	146	1891		1065				1,891	0	1177	8175
6/22/2013	10.5	40.9	7.9	40.7	47.8	97	2301		1392				2,301	0	1380	7545
6/23/2013	9.4	40.5	7.1	43	47.9	156	2987		1353				2,987	0	1293	8089
6/24/2013	12.4	42	6.8	38.8	46.9	144	3046		1254				3,046	0	1443	7986
6/25/2013	10.9	49.6	5.1	34.4	47.1	144	3046		885				3,046	0	1382	8317
6/26/2013	8.9	40.6	6	44.5	47.5	141	2725		513				2,725	0	1391	7919
6/27/2013	12.1	45.5	4.9	37.5	53.5	145	2605		854				2,605	0	1334	7568
6/28/2013	11	53.7	5.5	29.8	56.2	144	2817		791				2,817	0	1326	7996
6/29/2013	11.4	45.2	5.9	37.5	37.5	144	2566		956				2,566	0	1386	7646
6/30/2013	12.2	42.8	6.9	38.1	48.8	149	2911		1250				2,911	0	1432	8037
7/1/2013	11.3	46.9	6.2	35.6	53.7	143	2891		855				2,891	9.7	1271	7456
7/2/2013	9.1	42.5	7	41.4	62	140	2708		1341				2,708	7.5	1514	7531
7/3/2013	12.4	48.3	5.7	33.6	56.9	145	2610		1094				2,610			6120
7/4/2013	10.3	45.5	4.4	39.8	55.8	143	2901		1153				2,901			6397
7/5/2013	12.6	47.4	6.1	33.9	52.9	143	2884		1121				2,884	10.9	1501	7899

Date	Flare Sta #2 FL-100						Flare Sta #3 FL-120		Flare Sta #1 FL-140		Total Utility Flare Flow	East Side Flare		Total Flow		
	CH4	CO2	O2	Bal.	Press./Vac.	Gas Inlet Temp (°F)	Flow (scfm)	Flare Temp.	Flow (scfm)	Flare Temp.	Flow (scfm)	Flare Temp.	Flow (scfm)	CH4	Flow (scfm)	scfm
7/6/2013	13	47.6	6.2	33.2	51.4	139	2544	926					2,544	10.8	1535	7970
7/7/2013	14.7	50.5	5.1	29.7	39.5	149	2328	635					2,328	8.3	1364	7038
7/8/2013	10.8	50.3	5.1	33.8	33.1	140	2392	1066					2,392	11.9	1580	7768
7/9/2013	10.6	43.2	4.9	41.3	56.9	140	2279	1179					2,279	11.2	1504	7764
7/10/2013	12.6	43.7	6.1	37.6	61.4	129	2004	1360					2,004	9.1	1570	7534
7/11/2013	10.5	30.5	6	31.7	1.3	133	2041	1123					2,041	7.2	1398	7426
7/12/2013	12.9	54.5	4.6	28	35	136	2195	1354					2,195	8.9	1516	7632
7/13/2013	13.3	58.8	2.8	25.1	53.4	147	2701	1227					2,701	12.4	1265	7601
7/14/2013	12.7	51	4	26.3	51.3	90	2188	992					2,188	11.6	1305	6818
7/15/2013	13.4	60.6	3.3	22.7	54.7	92	2027	1092					2,027	12.3	1204	7185
7/16/2013	11.7	54.5	4.5	29.3	63.9	137	1383	938					1,383			5123
7/17/2013	12.3	55.8	4.7	27.2	42.6	92	1416	900					1,416	15.1	1023	9730
7/18/2013	12.5	59.8	2.8	24.9	57.7	147	1066	906					1,066	13.8	1003	9310
7/19/2013	12.1	54.7	4.4	28.8	57.7	147	1142	906					1,142			5129
7/20/2013	12.7	53.1	4.9	29.3	63.4	124	957	835					957	18.7	900	8774
7/21/2013	13	60.3	3.1	23.1	62.3	141	1343	874					1,343	17.3	833	8965
7/22/2013	12.8	54.2	4.8	28.2	56.3	142	1512	866					1,512	14.8	1007	9467
7/23/2013	12.8	52.5	3.5	31.2	65.4	142	1597	753					1,597	13.2	1102	9311
7/24/2013	11.5	44.2	6	33.3	61	134	1609	831					1,609	16.3	1047	9588
7/25/2013	11.9	57.3	4.5	26.3	65.7	145	1551	817					1,551	20.6	805	9586
7/26/2013	11.7	50.6	5.9	31.3	-68.3	136	1612	870					1,612	15.2	936	9631
7/27/2013	12.9	53.7	4.8	28.6	65.6	139	1177	1133					1,177	17.6	759	8826
7/28/2013	13.1	54.2	4.1	28.6	68.1	158	949	1632					949	15	846	8930
7/29/2013	13.4	54.1	4	28.5	66	141	1241	1628					1,241	12.2	894	9471
7/30/2013	13.6	52.3	4.8	29.3	66.5	131	801	1602					801	17.4	939	8705
7/31/2013	13.6	55	4.3	27.1	70	128	1052	1661					1,052	18.1	935	9013
8/1/2013	13.9	56.3	3.3	26.5	68.6	144	1210	1607					1,210	0	962	9344
8/2/2013	13.6	57.2	3.3	25.9	66.8	136	1184	948					1,184	0	1017	9047
8/3/2013	13.7	52.8	4.2	29.3	67.3	140	1218	849					1,218	0	1014	9092
8/4/2013	12.9	53.3	4.2	29.6	68.3	158	1148	747					1,148	0	975	9059
8/5/2013	13.1	54.9	4	28	63.7	141	1138	997					1,138	0	946	9093
8/6/2013	14.8	57	3	25.2	66.5	145	1266	903					1,266	0	928	10186
8/7/2013	15.8	56.2	3.6	24.4	62.6	145	1286	877					1,286	0	1103	10379
8/8/2013	13.9	52.6	4.4	29.1	67.7	139	1381	761					1,381	0	990	10055
8/9/2013	14.6	54.3	3.8	27.3	64.4	140	1158	791					1,158	0	1074	10174
8/10/2013	14.8	54.6	4.2	26.4	68.3	142	1348	861					1,348	0	1043	10339
8/11/2013	14.1	53.9	3.9	28.1	65.6	162	1288	767					1,288	0	1122	10354
8/12/2013	14.5	54.7	4.2	26.6	69.7	136	1201	979					1,201	0	1080	10105
8/13/2013	13.4	56.8	4.7	25.1	74	89	1022	889					1,022	0	1061	9747
8/14/2013	13	51.5	5.2	30.3	69.7	83	1101	700					1,101	0	1174	9310
8/15/2013	13.9	55	4	27.1	67.7	137	1172	841					1,172	0	976	9867
8/16/2013	13.3	52.8	4.3	29.6	68.6	135	1141	840					1,141	0	845	9588
8/17/2013	13.6	57.4	3.8	25.2	42.3	133	1190	885					1,190	0	903	9902
8/18/2013	14.4	59.5	3.2	22.9	69.9	132	1318	904					1,318	0	902	10194
8/19/2013	14.2	55.7	4.3	25.8	72.6	133	1111	712					1,111	0	1055	10156
8/20/2013	13.5	55.4	4.6	26.5	69.6	136	1346	667					1,346	0	1043	10180
8/21/2013	13.9	59.1	4.1	22.9	72.8	138	960	799					960	0	1048	9514
8/22/2013	13.6	56.5	4.4	25.5	66.7	136	1372	770					1,372	0	888	9937
8/23/2013	14	58.5	4.3	23.2	66.3	137	1268	617					1,268	0	977	9647
8/24/2013	13.5	55.1	5.9	25.5	60.1	135	1272	790					1,272	0	1083	9597
8/25/2013	12.3	56.2	4.6	26.9	74	136	1335	741					1,335	0	1286	10244
8/26/2013	12.8	54	4.9	28.3	68.8	135	1302	773					1,302	0	1080	9738
8/27/2013	14.4	55.6	4.8	25.2	67.5	135	1263	857					1,263	0	1071	9719
8/28/2013	14	50.7	4.7	30.6	62.1	136	1230	726					1,230	0	1089	9300
8/29/2013	14.7	59.3	2.6	23.4	66.9	143	1277	891					1,277	0	989	10041
8/30/2013	14.7	64.9	3.1	17.3	61.4	149	1071	769					1,071	0	947	9340
8/31/2013	15.5	51.8	4.3	28.4	66.3	137	1093	758					1,093	0	1062	9099
9/1/2013	15.1	56.8	3.5	24.6	59.1	138	1001	715					1,001	0	1252	10258
9/2/2013	15.9	60.5	5	18.6	58.6	131	975	743					975	0	1205	10164
9/3/2013	14	54.1	3.1	28.8	61.1	141	760	675					760	0	1150	9848
9/4/2013	13.1	52.6	3	31.3	51.4	145	615	695					615	0	1211	9570
9/5/2013	12.4	58.6	3	26	58.9	145	572	731					572	0	1130	9591
9/6/2013	11.8	63.9	4.8	19.5	61	138	700	628					700	0	1055	9295
9/7/2013	11.9	54.9	5.6	27.6	56.3	134	737	717					737	0	1092	9528
9/8/2013	12.9	57.3	3.8	26	65.1	137	772	764					772	0	1065	9352
9/9/2013	13.1	57.2	3.5	26.2	60.5	137	713	756					713	0	1098	9747
9/10/2013	13.2	60.1	3.1	23.6	61.8	140	855	700					855	0	1060	9243

Date	Flare Sta #2 FL-100						Flare Sta #3 FL-120		Flare Sta #1 FL-140		Total Utility Flare Flow	East Side Flare		Total Flow		
	CH4	CO2	O2	Bal.	Press./Vac.	Gas Inlet Temp (°F)	Flow (scfm)	Flare Temp.	Flow (scfm)	Flare Temp.	Flow (scfm)	Flare Temp.	Flow (scfm)	CH4	Flow (scfm)	scfm
9/11/2013	12.8	55.4	4.3	27.5	63.8	138	841	831				841	0	1088	9332	
9/12/2013	12.8	53.6	4	29.6	58.6	136	749	969				749	0	1110	9676	
9/13/2013	12.6	53.9	4.9	28.4	69.8	134	749	976				749	0	1115	9479	
9/14/2013	14.5	60.8	3	21.7	64.7	136	741	979				741	0	1123	9128	
9/15/2013					69.7	136	788	952				788	0	1073	9225	
9/16/2013	12.7	55	4.8	27.5	70.9	133	749	1087				749	0	1122	8898	
9/17/2013	16.7	55.1	4.5	22.7	73.6	131	917	849				917	0	1102	9334	
9/18/2013	13.3	54.2	4.7	27.8	71.4	131	801	959				801	0	1082	9312	
9/19/2013	13.6	59.5	3.7	23.2	72.3	135	772	932				772	0	1058	9528	
9/20/2013	13.2	55.4	3.9	27.5	77.5	128	821	957	3561	1598		4,382	0	1135	8768	
9/21/2013							855	1109	2122	1429		2,977	0	1139	6507	
9/22/2013	13.1	54.1	5.2	27.6	33.8	136	705	783	3790	1608		4,495	0	1140	7435	
9/23/2013	12.9	54.4	4.7	28.8	50.1	132	701	835	3769	1624		4,470	0	1122	7061	
9/24/2013	11.2	47.2	6.7	34.9	55.8	130	637	1013	3997	1618	1742	905	6,376	0	1485	7861
9/25/2013	11.7	98.7	6.5	33.1	49	131	849	1055	1744	919	2449	734	5,042	0	1533	6575
9/26/2013	13.3	52.1	5	29.6	0.6	139	1724	942	2171	936	1224	816	5,119	0	1573	6692
9/27/2013	12.2	53	5.3	29.5	0.7	124	1209	893	2145	882	1348	859	4,702	0	1453	6155
9/28/2013	11.3	50.5	7.9	30.3	1.3	125	1327	1243	1939	987	1283	946	4,549	0	1427	5976
9/29/2013	13.3	45.6	7.7	33.9	0.9	125	2833	1142	2030	976	1249	907	6,112	0	1512	7624
9/30/2013	11.8	49.9	7.2	31.6	1.2	125	1270	1045	1841	916	1427	992	4,538	0	1471	6009
10/1/2013	12	50.1	6.4	31.5	-35.2	115	1207	1132	1966	1035	1303	953	4,476	0	1379	5855
10/2/2013	12.1	53.5	5.2	29.2	-32.2	116	1025	1072	2137	971	1530	956	4,692	0	1242	5934
10/3/2013	12.9	51.8	5.8	29.5	-34.9	118	1003	1171	2075	1136	1524	1060	4,602	0	1222	5824
10/4/2013	10.9	49.5	6	33.6	-34.6	116	1004	1134	2110	1106	1535	1095	4,649	0	1320	5969
10/5/2013	12.7	47.7	6.2	33.4	-34.4	116	980	1084	2053	1083	1515	1066	4,548	0	1300	5848
10/6/2013	11.3	45.8	7.2	35.7	-35.8	112	971	1248	1990	999	1344	1003	4,305	0	1296	5601
10/7/2013	12.1	44	7.8	36.1	-36.2	106	1013	1176	1929	1240	1570	1021	4,512	0	1101	5613
10/8/2013	10.5	48.8	7.1	33.6	-31.7	104	1081	1173	2196	952	1307	973	4,584	0	922	5506
10/9/2013	10.5	48.2	7.6	33.7	-29.2	104	1382	1003	1915	843	1427	885	4,724	0	1048	5772
10/10/2013	12.2	49.9	6.5	31.4	-34.4	114	966	1026	1591	946	1688	956	4,245	0	901	5146
10/11/2013	11.8	50.7	6	31.5	-33.4	113	900	1119	1900	932	1870	1280	4,670	0	1222	5892
10/12/2013	10.9	44.5	7.4	37.2	-34.7	107	851	1110	1684	965	1981	1038	4,516	0	1046	5562
10/13/2013	10.4	44	7.6	38	-35.1	107	826	898	1915	1078	1755	1198	4,496	0	528	5024
10/14/2013	10.3	45.5	8	36.2	-34.9	100	1005	1121	1651	859	1744	884	4,400	0	594	4994
10/15/2013	11.8	48.1	6.8	33.3	-33.2	110	1030	1253	1393	1078	1805	1276	4,228	0	1330	5558
10/16/2013	11.4	47.2	7.6	38.8	-32.5	95	1045	1239	910	920	1781	1275	3,736	0	1407	5143
10/17/2013	10.4	24	7.1	58.5	-36	101	1005	1204	1776	876	1259	1821	4,040	0	1239	5279
10/18/2013	11	49.2	7.2	32.6	-35.8	95	950	1161	1816	955	1705	1041	4,471	0	1274	5745
10/19/2013	11.2	45.1	7.6	36.1	-35.3	82	960	1125	1944	906	1544	990	4,448	0	1057	5505
10/20/2013	11.6	49.2	6.9	32.3	-35.9	90	950	1195	1796	970	1620	1335	4,366	0	544	4910
10/21/2013	11.4	43	7.4	38.2	-35.9	93	850	1084	1970	912	1680	1046	4,500	0	1454	5954
10/22/2013	11.7	43.6	6.7	38	-35.8	93	760	1016	1720	1005	1780	1180	4,260	0	1066	5326
10/23/2013	11.7	43.1	7	38.2	-36	78	900	1150	900	1190	1700	1050	3,500	0	1120	4620
10/24/2013	10	40.1	8.6	41.3	-35.9	82	900	900	1850	883	1720	1010	4,470	0	952	5422
10/25/2013	11.4	45.8	7.2	35.6	-36.2	90	946	1072	1888	904	1758	1057	4,592	0	1114	5706
10/26/2013	11.5	44.5	7.2	36.8	-35.5	80	949	1175	1150	829	1884	1347	3,983	0	1092	5075
10/27/2013	12.5	49.7	5.6	32.2	-34.7	90	1007	1174	1702	853	1735	1301	4,444	0	1092	5536
10/28/2013	12.4	48.4	6.1	33.1	-35.4	97	834	1078	1669	870	1822	1047	4,325	0	1087	5412
10/29/2013	11.9	48.5	5.9	33.7	-35.5	92	1004	1141	1865	885	1722	1217	4,591	0	854	5445
10/30/2013	12.1	49.1	5.9	32.9	-30.6	98	927	1155	1473	846	1861	1193	4,261	0	984	5245
10/31/2013	11.7	48.5	6.1	33.7	-35	100	970	1195	1941	1016	1741	1228	4,652	0	998	5650
11/1/2013	10.9	42.8	7.6	38.7	-35.8	84	947	1194	1922	955	1629	1225	4,498	0	948	5446
11/2/2013	10.8	42	7.6	39.6	-35.6	85	964	1224	1890	1184	1642	1094	4,496	0	971	5467
11/3/2013	11.3	42.7	7.4	38.6	-36.1	80	959	1204	1942	934	1627	1283	4,528	0	846	5374
11/4/2013	10.7	40.5	7.9	40.9	-36.2	82	848	1177	1780	990	1731	1280	4,359	0	1170	5529
11/5/2013	12.8	44.4	7.5	35.3	-35.9	80	860	1040	1826	886	1784	1205	4,470	0	1171	5641
11/6/2013	10.9	48.2	6.3	34.6	-35.9	87	1440	1206	1987	1142	2110	1205	5,537	0	770	6307
11/7/2013	10.2	48.7	6.9	34.2	-35.9	88	979	1222	1886	899	1666	1271	4,531	0	797	5328
11/8/2013	11.5	48.6	6.6	33.3	-35.8	90	1337	1111	1808	899	1764	1188	4,909	0	662	5571
11/9/2013	11.5	44.8	7.6	36.1	-35.9	88	753	1184	1879	1035	1734	1387	4,366	0	1239	5605
11/10/2013	9.5	41.2	8.5	40.8	-35.8	91	751	1091	1861	901	1724	1277	4,336	0	1218	5554
11/11/2013	10.7	43.5	7.9	37.9	-35.9	93	732	1120	1850	922	1787	1222	4,369	0	1206	5575
11/12/2013	9.3	37.9	9.5	43.3	-35.9	82	731	1079	1756	981	1567	1232	4,054	0	1224	5278
11/13/2013	10	39.1	8.6	42.3	-36.4	77	820	1045	1406	858	1471	1069	3,697	0	1214	4911
11/14/2013	10.3	41.5	8.7	39.5	-35.9	77	870	1131	1712	942	1637	1207	4,219	0	1201	5420
11/15/2013	10.1	42.7	8.1	34.1	-36.4	87	750	1154	1535	910	1889	1343	4,174	0	1097	5271
11/16/2013	10.6	43.9	7.5	38	-21.4	84	931	1258	1761	1084	1941	1074	4,633	0	1031	5664

Date	Flare Sta #2 FL-100						Flare Sta #3 FL-120		Flare Sta #1 FL-140		Total Utility Flare Flow	East Side Flare		Total Flow		
	CH4	CO2	O2	Bal.	Press./Vac.	Gas Inlet Temp (°F)	Flow (scfm)	Flare Temp.	Flow (scfm)	Flare Temp.	Flow (scfm)	Flare Temp.	Flow (scfm)	CH4	Flow (scfm)	scfm
11/17/2013	13.4	45.1	7.1	34.4	-20.7	93	933	1252	1842	1105	1967	963	4,742	0	1021	5763
11/18/2013	9.5	42	8.3	40.2	-30.4	90	800	1243	1342	798	1995	1377	4,137	0	1074	5211
11/19/2013	10	41.8	7.8	40.4	-33.6	98	1110	1235	1930	951	1660	1255	4,700	0	1054	5754
11/20/2013	10.1	40.2	8.6	41.1	-32.1	86	1040	1320	1580	983	1670	1230	4,290	0	1030	5320
11/21/2013	10.4	45.5	7.6	36.5	-30.6	88	1170	1240	1680	915	1750	1200	4,600	0	830	5430
11/22/2013	9.7	44.1	7.9	38.3	-30.1	80	1103	1224	1532	983	1684	1309	4,319	0	766	5085
11/23/2013	8.6	39.6	9.2	42.6	-32.1	76	1088	1277	1559	900	1634	1332	4,281	0	1083	5364
11/24/2013	7.6	32.5	12.4	47.5	-28.6	71	1017	1250	1587	882	1522	1140	4,126	0	1068	5194
11/25/2013	9.5	38.1	9.8	42.6	-31.4	70	1046	1260	1618	907	1677	1174	4,341	0	1057	5398
11/26/2013	9.4	38.7	9.6	42.3	-30.5	71	706	1019	2460	1231	1256	1129	4,422	0	1024	5446
11/27/2013	8.5	33.4	10.6	47.5	-34.8	57	784	947	2328	1120	1420	1337	4,532	0	1029	5561
11/28/2013	9.4	37.5	9.8	43.3	-34.4	54	660	1023	2423	1014	1601	1405	4,684	0	934	5618
11/29/2013	9.6	38.3	9.4	42.7	-33.7	51	550	1165	2465	1194	1561	1181	4,576	0	943	5519
11/30/2013	10.1	42.9	10.5	36.5	-34.5	62	665	1064	2389	1252	1614	1289	4,668	0	1069	5737
12/1/2013	10.1	43.8	7.9	38.2	-33.3	58	1030	964	1125	893	1730	1284	3,885	0	918	4803
12/2/2013	10.7	46	7.1	36.2	-34.2	67	872	1130	2437	1013	1202	1048	4,511	0	888	5399
12/3/2013	9.9	43.7	7.7	38.7	-35.7	67	991	1254	1433	881	1857	1389	4,281	0	812	5093
12/4/2013	11.1	44.3	7.3	37.3	-40	73	1022	1268	2425	1034	1170	1254	4,617	0	772	5389
12/5/2013	11.3	46.3	7	35.4	-39.8	73	862	1116	2549	1133	1052	1091	4,463	0	771	5234
12/6/2013	8.3	37.6	13.9	40.2	-39.4	78	901	1145	2518	1274	1306	1214	4,725	0	775	5500
12/7/2013					-40	75	1175	1175	1980	1126	1765	1315	4,920	0		4920
12/8/2013	9.4	42.6	9.7	38.3	-40	79	857	1140	2627	1055	1283	1306	4,767	0	938	5705
12/9/2013	8.1	43.1	11.2	37.6	-39	74	1025	1257	2025	1241	1478	1163	4,528	0	933	5461
12/10/2013	9.2	42	9.3	38.3	-37.8	71	978	1205	1833	1029	1568	1173	4,379	0	1023	5402
12/11/2013	8	40.9	11.3	39.8	-38.8	74	829	1173	2460	930	1422	1274	4,711	0	949	5660
12/12/2013	9.5	48.7	9.7	32.1	-39.5	71	883	1180	2602	1127	1265	1252	4,750	0	908	5658
12/13/2013	9.3	44.7	9.7	36.3	-39.4	71	894	1111	2707	984	1301	1182	4,902	0	841	5743
12/14/2013	11.2	46.2	6.6	35.5	-39.9	76	1206	1285	2084	1098	1291	945	4,581	0	821	5402
12/15/2013	11.1	42.3	8.7	37.4	-40.2	66	1040	1238	2364	1196	1262	1205	4,666	0	1168	5834
12/16/2013	10.1	41.2	8	40.7	-38.9	74	1474	1312	1888	1109	1227	907	4,589	0	916	5505
12/17/2013	9.8	39.8	9.4	41	-38.5	74	1126	1203	2427	1127	1174	1183	4,727	0	868	5595
12/18/2013	10	37	10.4	42.6	-40.8	76	994	1157	2099	1069	1703	1346	4,796	0	1099	5895
12/19/2013	9.7	41.8	9.1	39.4	-43.4	73	1727	1197	852	1085	1938	1236	4,517	0	977	5494
12/20/2013	14.3	42.5	8.9	34.3	-44.5	68	1880	1335	2522	1156	1560	1296	5,962	0	988	6950
12/21/2013	10.2	40	8.4	40.4	-43.3	69	1968	1344	2541	1045	1088	1200	5,597	0	1061	6658
12/22/2013	10.5	42.2	8.2	39.1	-43.6	70	1610	1287	2420	1174	1298	1225	5,328	0	960	6288
12/23/2013	7.9	31.3	11.5	49.3	-43.8	67	1116	1236	2553	1375	1662	1213	5,331	0	871	6202
12/24/2013	8.4	34.6	10.2	46.8	-42.6	63	1721	1302	2153	1135	1932	1304	5,806	0	808	6614
12/25/2013	9.5	39.8	9.2	41.5	-44.4	65	1063	1305	1725	1217	1604	1228	4,392	0	808	5200
12/26/2013	8.2	40.7	8.1	43	-43	70	2025	1297	1453	892	1691	1350	5,169	0	835	6004
12/27/2013	10.7	42.9	8.8	37.6	-43.4	69	1228	1054	2149	1097	1261	1291	4,638	0	851	5489
12/28/2013	13.3	40.9	9.1	36.7	-44.6	72	2029	1331	2203	958	1362	1290	5,594	0	968	6562
12/29/2013	16.9	41.4	8.9	32.8	-44.5	74	1755	1146	2302	1136	1425	1341	5,482	0	919	6401
12/30/2013	10.4	39.7	8.8	41.1	-44.4	48	2025	1250	2350	1058	1350	1216	5,725	0	950	6675
12/31/2013	8.8	35.9	10.1	45.2	-44.9	43	2100	503	2156	1146	1300	1324	5,556	0	932	6488
1/1/2014	9	37.3	9.7	44	-44.8	49	1850	1290	1270	1216	2467	950	5,587		890	6477
1/2/2014	8.3	36.5	10.8	44.4	-44.8	26	1800	1240	1200	1145	2100	1180	5,100		950	6050
1/3/2014	8	34.3	11.8	45.9	-44.4	45	2640	1427	1450	1212	1930	1180	6,020		1025	7045
1/10/2014	7.2	31.6	11.9	49.3	-43.2	79	1422	1563	1687	1293	2315	1325	5,424		1204	6628
1/13/2014	8.2	35.6	10.2	46	-44.7	90	1110	1110	2040	1367	3300	1010	6,450		972	7422
1/14/2014	7.8	39.7	10.3	42.2	-44.5	83	2650	1323	2360	1366	791	992	5,801		975	6776
1/15/2014	7.8	32.5	10.9	48.8	-45.2	73	1600	1400	1750	1326	2808	1237	6,158		1035	7193
1/16/2014	8	33	10.9	48.1	-45.2	79	1906	1516	1743	1426	2795	1101	6,444		1022	7466
1/17/2014	6.8	27.6	13	52.6	-44.5	58	1216	1409	1900	1361	2893	1338	6,009		945	6954
1/19/2014	9.4	37.5	9.2	43.9	-44.4	94	2203	1248	1623	1367	2756	1299	6,582		833	7415
1/20/2014	8.7	40.6	9.4	41.3	-44.7	92	1824	1471	2201	1161	3331	1007	7,356		1075	8431
1/21/2014	8.7	34	10.6	46.7	-43.9	81	1914	1435	1375	1018	2620	1134	5,909		1437	7346
1/22/2014	8.6	36.8	9.6	45	-44.1	77	2098	1452	1313	1295	2070	1125	5,481		866	6347
1/23/2014	9.5	38.8	9.8	41.9	-44.4	81	1907	1381	1120	1092	2690	1323	5,717		1003	6720
1/24/2014	9.2	41.2	9.8	39.8	-43.6	78	2009	1400	1034	1277	2240	1155	5,283		1092	6375
1/27/2014	8.7	35.4	10.1	45.8	-44.1	79	1851	1384	1514	1410	2364	1191	5,729		963	6692
1/28/2014	9.9	45.4	9	35.7	-44.4	40	1542	1417	1083	1142	2580	1340	5,205		975	6180
1/29/2014	9.1	38.2	9.7	43	-44.1	33	1332	1476	1415	1219	2413	1107	5,160		906	6066
2/3/2014	9.2	37.1	9.1	44.6		61	1570		2437		1565		5,572		907	6479
2/4/2014	9.2	36.8	9.7	44.3		61	1444		2426		1537		5,407		1100	6507
2/5/2014	8.4	36.4	9.9	45.3	-44	52	1510	1406	2511	1312	1392	1077	5,413		1017	6430
2/6/2014	9.2	39.7	9.5	41.6	-43.2	44	1297	1454	2309	1270	1326	903	4,932		1015	5947

Date						Flare Sta #2 FL-100		Flare Sta #3 FL-120		Flare Sta #1 FL-140		Total Utility Flare Flow	East Side Flare		Total Flow	
	CH4	CO2	O2	Bal.	Press./Vac.	Gas Inlet Temp (°F)	Flow (scfm)	Flare Temp.	Flow (scfm)	Flare Temp.	Flow (scfm)	Flare Temp.	Flow (scfm)	CH4	Flow (scfm)	scfm
2/7/2014	9.7	40.9	8.2	41.2	-44	56	1206	1422	2112	848	1273	1038	4,591		1140	5731
2/10/2014	8.4	38.2	9.3	44.1	-43.9	43	1231	1430	2775	1236	1382	1142	5,388		988	6376
2/11/2014	8.9	40.4	8.9	41.8	-43.1	57	1155	1024	2323	982	1400	1047	4,878		978	5856
2/12/2014	9.8	40.2	8.2	41.8	-43.5	57	1223	1039	2497	1227	1446	1134	5,166		969	6135
2/17/2014	9.5	38.4	9.4	42.7	-43.3	58	1380	1324	2508	1264	1393	1331	5,281		775	6056
2/18/2014	8.4	38.9	9.3	43.4	-43.8	69	1408	1195	2559	1229	1475	1388	5,442		868	6310
2/19/2014	8	35.9	9.8	46.3	-44.5	71	1392	1177	2581	1304	1543	1200	5,516		888	6404
2/20/2014	9.2	41	8.7	41.1	-43.4	80	1452	1343	2546	1318	1660	1357	5,658		532	6190
2/21/2014	8.1	36	10.2	45.7	-43.8	64	1362	1389	2407	1308	1567	1277	5,336		551	5887
2/24/2014	8	38.5	10	43.5	-44.2	57	1402	1105	2545	1247	1492	1287	5,439		426	5865
2/25/2014	7.9	41.8	9.7	40.6	-43.7	62	1416	1193	2510	1196	1512	1310	5,438		1240	6678
2/26/2014	8.6	40.1	9.9	41.4	-43.8	50	1473	1182	2354	1313	1579	1267	5,406		780	6186
2/27/2014	8.2	37.3	9.8	44.7	-43.7	54	1450	1237	2403	1177	1566	1315	5,419		520	5939
2/28/2014	9.2	41.6	9.3	39.9	-44.1	67	1845	1330	2320	1272	1400	1397	5,565		750	6315
3/1/2014	7.8	34.8	9.9	47.5	-44.7	58	1446	1204	2191	1244	1994	1342	5,630		705	6335
3/2/2014	8.8	31.8	10.5	48.9	-43.4	37	1486	1200	2257	1160	1892	1380	5,634		792	6427
3/3/2014	9.5	38.3	9	43.2	-44.2	29	1378	1068	2182	823	1776	1315	5,337		906	6243
3/4/2014	9.5	40.9	8.9	40.7	-43.8	49	1488	1050	2168	1150	2000	1325	5,656		770	6426
3/5/2014	9.7	39.7	8.5	42.1	-44.4	52	1501	907	2116	1223	2023	1390	5,640		730	6370
3/6/2014	9.1	42.2	8.8	39.9	-44.6	43	1344	970	2100	1240	2006	1353	5,450		650	6100
3/7/2014	10.4	42.4	7.8	39.4	-43.7	81	1402	1017	2123	1217	1993	1391	5,519		775	6293
3/8/2014	9.8	41.9	8.2	40.1	-45.4	54	1391	1040	2100	1140	1912	1400	5,403		1131	6535
3/9/2014	9.3	40.7	8.4	41.6	-44.4	62	1399	995	2089	1115	1953	1390	5,441		1065	6506
3/10/2014	9.6	45.9	7	37.5	-44.4	70	1428	1316	2145	1031	2067	1439	5,641		951	6592
3/11/2014	10.6	49.5	5.8	34.1	-44	96	1066	1149	2348	1215	2152	1321	5,566		912	6478
3/12/2014	8.8	41.5	8.3	41.4	-41	58	1586	1240	2289	1260	1486	1303	5,361		831	6192
3/13/2014	9.8	41.5	8.3	40.4	-43.4	80	1853	1250	1426	1270	2040	1292	5,319		875	6194
3/14/2014	10.7	45.7	6.7	36.9	-44.7	79	1555	1330	2308	1301	1767	1527	5,630		830	6460
3/15/2014	10.3	48.6	6.1	34.6	-44	88	975	1237	2555	1182	1917	1311	5,446		814	6260
3/16/2014	8.5	39	9.6	42.9	-41.8	49	1125	1246	2016	1231	2089	1453	5,230		788	6018
3/17/2014	10.1	45.5	6.6	37.8	-45.5	66	834	1086	2247	1041	2336	1341	5,417		837	6254
3/18/2014	10	49.4	6.4	34.2	-44.4	69	1189	1270	2641	1274	2317	1360	6,147		808	6955
3/19/2014	8.8	41	8.4	41.8	-43.4	59	1171	1298	2564	1293	2817	1377	6,551		826	7377
3/20/2014	9.5	42.8	7.5	40.2	-43	57	1632	1202	2452	1077	2586	1379	6,670		765	7435
3/21/2014	11.5	48.3	5.6	34.6	-43.4	93	1693	1283	2378	1035	2748	1436	6,818		763	7581
3/22/2014	8.9	41.6	8.4	41.1	-43.1	54	1422	1142	2212	1121	2771	1319	6,405		775	7180
3/23/2014	9.2	43	8	39.8	-43.4	57	1400	1138	2362	1259	2543	1212	6,304		803	7107
3/24/2014	9.5	42.2	7.8	40.5	-43.8	58	1573	1127	2390	1081	2375	1182	6,338		816	7155
3/25/2014	9	42.5	7.9	40.6	-44.3	50	1717	1247	2037	1147	2567	1273	6,322		845	7167
3/26/2014	9.1	40.7	8.9	41.3	-44.2	47	1624	1212	2114	1147	2500	1305	6,238		814	7051
3/27/2014	10.1	45	7.4	37.5	-43.6	59	1468	1254	2047	1109	2577	1369	6,092		541	6633
3/28/2014	9	41.4	8.5	41.1	-43.4	61	1328	1115	2298	1281	2400	1250	6,027		571	6597
3/29/2014	8.5	37.1	9.8	44.6	-44.3	55	1315	1183	1869	1174	2519	1278	5,704		753	6457
3/30/2014	9.5	39.7	8.3	42.5	-44	61	1451	1136	1752	1207	2955	1256	6,158		858	7016
3/31/2014	9.3	39.2	9.2	42.3	-44.1	61	1226	1251	2354	1269	2643	1357	6,223		1027	7250
4/1/2014	8.9	39.1	8.9	43.1	-44.3	57	1391	1171	2170	1173	2468	1318	6,029		898	6926
4/2/2014	9.1	36.4	9.9	44.6	-44.5	59	1624	1198	2082	1132	2276	1267	5,982		783	6765
4/3/2014	9.8	40.3	8.5	41.4	-44.4	67	1646	1201	2443	1203	2052	1232	6,141		705	6847
4/4/2014	9.5	38.3	8.9	43.3	-44.7	53	1846	1271	2178	1283	2171	1341	6,195		693	6888
4/5/2014	10.2	44.5	7.4	37.9	-44.5	59	1875	1179	2370	1139	2170	1222	6,415		781	7196
4/6/2014					-44.6		2039	1251	2191	1103	2247	1235	6,478		771	7249
4/7/2014	10.8	43.9	7.6	37.7	-44.7	58	1804	1206	2224	1129	2114	1248	6,141		927	7068
4/8/2014	10.6	42	7.7	39.7	-44.7	64	1777	1210	2265	1191	2061	1262	6,103		896	6999
4/9/2014	10.1	41.4	8	40.5	-44.5	60	1854	1236	2216	1135	2085	1273	6,155		933	7088
4/10/2014	10.9	43.1	7.4	38.6	-44.3	70	1723	1239	2518	1204	2079	1341	6,320		890	7210
4/11/2014	10.5	43.2	7	39.3	-42.8	85	2011	1245	1801	1038	2083	1200	5,896		871	6767
4/12/2014					-44.5	86	2171	1358	1626	1114	2371	1328	6,168		895	7063
4/13/2014					-44.4		2222	1340	1082	1780	2358	1340	6,359		880	7239
4/14/2014	10.3	42.3	7.8	39.6	-44.7	57	2220	1289	1502	1123	2308	1285	6,031		816	6847
4/15/2014	9.8	40.9	8.3	41	-44.5	51	2250	1271	1531	1038	2194	1223	5,976		733	6709
4/16/2014	10.5	43.6	7.6	38.3	-44.6	70	2279	1336	1737	1136	2157	1282	6,174		624	6797
4/17/2014	10.6	41.8	7.2	40.4	-43.7	83	2260	1272	1732	988	2482	1279	6,474		781	7256
4/18/2014	10.6	43.7	7	38.7	-44.6	71	2074	1247	1625	1014	2735	1307	6,434		908	7342
4/19/2014					-44.6		2233	1315	1682	1038	2773	1262	6,689		856	7544
4/20/2014	11	46.3	6	36.7	-44.6	101	2286	1346	1743	1061	2804	1260	6,833		842	7675
4/21/2014	10.7	44.3	6.7	38.3	-44.1	81	2189	1273	1801	994	2875	1248	6,864		808	7672
4/22/2014	10.7	41.7	7.5	40.1	-44.7	70	2093	1279	2046	1106	3292	1309	7,431		848	8279

Date	Flare Sta #2 FL-100						Flare Sta #3 FL-120				Flare Sta #1 FL-140		Total Utility Flare Flow	East Side Flare		Total Flow
	CH4	CO2	O2	Bal.	Press./Vac.	Gas Inlet Temp (°F)	Flow (scfm)	Flare Temp.	Flow (scfm)	Flare Temp.	Flow (scfm)	Flare Temp.	Flow (scfm)	CH4	Flow (scfm)	scfm
4/23/2014	11.4	48.6	5.7	34.3	-44.6	83	1996	1280	2070	1099	3251	1323	7,317		814	8131
4/24/2014	10.5	40.9	7.8	40.8	-39.4	76	2056	1237	1652	1044	2997	1230	6,705		692	7398
4/25/2014	10.5	45.9	6.5	37.1	-43.5	77	2384	1311	1632	1023	3324	1316	7,340		699	8039
4/26/2014	12	47.7	5.9	34.4	-44.5	95	2388	1336	1611	1028	3312	1324	7,311		951	8262
4/27/2014					-44.6		2399	1351	1612	1135	3286	1328	7,297		909	8206
4/28/2014	11.4	43.6	7.3	37.7	-44.5	78	2282	1346	1446	1130	3178	1320	6,906		944	7850
4/29/2014	12.7	50.2	5	32.1	-44.7	80	2088	1321	1361	1119	2993	1393	6,442		935	7377
4/30/2014	10.5	40.7	8	40.8	-44.6	61	2000	1302	1639	1054	3025	1346	6,663		942	7606
5/1/2014	11.1	42.8	7	39.1	-43.5	63	1765	1266	2017	997	2843	1328	6,625		947	7572
5/2/2014	11.4	46.1	6.5	35.5	-44.2	74	1650	1261	2290	1031	2812	1312	6,752		905	7657
5/3/2014							1903	1279	2058	1014	3084	1292	7,045		908	7954
5/4/2014							2313	1319	1503	1043	3362	1334	7,178		921	8099
5/5/2014	11.2	44.2	6.6	38	-44.0	79	2409	1315	1556	1030	3480	1354	7,445		831	8276
5/6/2014	11.9	45.8	6.3	36	-44.8	79	2265	1305	1430	957	3054	1243	6,749		774	7523
5/7/2014	12.2	46.7	6	35.1	-44.2	87	1641	1339	1943	962	3309	1399	6,893		806	7699
5/8/2014	11.7	44.4	6.5	37.4	-43.8	87	1319	1325	2456	1112	3075	1422	6,851		836	7687
5/9/2014	11.1	42.6	6.7	39.6	-44.7	85	1314	1271	2523	1095	3082	1357	6,919		788	7706
5/10/2014							1328	1256	2523	1090	3151	1301	7,002		769	7771
5/11/2014							1341	1286	2595	1121	3150	1356	7,086		767	7853
5/12/2014	11.1	42.9	6.9	39.1	-43.8	93	1358	1300	2727	1164	3133	1384	7,219		767	7985
5/13/2014	11	42.1	7.3	39.4	-44.7	73	868	954	2238	1021	2371	1163	5,478		707	6185
5/14/2014	13.1	47	5.9	34	-44.8	65	640	758	2289	1096	2395	1309	5,324		767	6091
5/15/2014	12.6	46.8	6.1	34.5	-43.9	66	1149	1205	2189	1071	2578	1288	5,916		792	6708
5/16/2014	12.6	44	6.8	36.6	-43.9	62	1306	1236	2271	1128	2758	1325	6,335		719	7054
5/17/2014							1441	1223	2305	1022	2953	1250	6,698		679	7377
5/18/2014							1505	1291	2318	1081	3009	1257	6,832		833	7665
5/19/2014	12.4	44.1	6.7	36.8	-43.0	76	1473	1306	2558	1181	2946	1327	6,977		760	7736
5/20/2014	12.8	48.7	5.6	32.9	-43.6	87	1599	1257	2404	1088	2788	1293	6,791		763	7555
5/21/2014	13	55.7	4.8	26.5	-44.8	94	1479	1239	2647	1125	2772	1309	6,898		763	7661
5/22/2014	11.9	46.8	5.9	35.4	-43.7	87	1359	1179	3166	1234	2678	1303	7,204		728	7932
5/23/2014	12.2	47.6	5.6	34.6	-43.9	89	1296	1215	3226	1248	2648	1306	7,169		692	7861
5/24/2014							1476	1256	3198	1231	2590	1233	7,265		599	7864
5/25/2014							1338	1201	3002	1189	2490	1241	6,830		697	7527
5/26/2014							1380	1256	2999	1198	2589	1223	6,967		683	7650
5/27/2014	11.6	44.4	6.5	37	-43.5	93	1431	1245	3482	1271	2939	1260	7,852		659	8510
5/28/2014	10.8	42.3	6.3	40.6	-43.1	92	1415	1177	3496	1259	2941	1249	7,851		595	8446
5/29/2014	13.2	49.1	4.9	32.8	-44.7	105	1401	1239	3567	1233	2964	1256	7,932		537	8469
5/30/2014	11.4	53.6	4.3		30.7	104	1360	1217	3623	1250	2976	1300	7,959		436	8395
5/31/2014							1360	1229	3647	1217	3007	1297	8,014		356	8370
6/1/2014							1647	1174	3464	1148	2000	881	7,111		283	7394
6/2/2014	12.2	49.6	5.4	32.8	-44.5	92	1922	1305	2700	1139	3194	1320	7,815		223	8038
6/3/2014	11.3	50.2	5.1	33.4	-43.3	94	2022	1247	2811	1131	3265	1215	8,099		160	8259
6/4/2014	13.2	52.9	4.2	29.7	-44.2	91	1936	1304	2962	1154	3471	1380	8,370		151	8521
6/5/2014	12.2	48.7	5.6	33.5	-43.7	84	1874	1285	2847	1159	3372	1329	8,093		141	8234
6/6/2014	13.5	53.6	4.3	28.6	-43.6	88	1890	1286	2711	1129	3400	1276	8,000		317	8317
6/7/2014							1686	1313	2496	1182	3080	1308	7,262		743	8006
6/8/2014							1668	1306	2462	1141	3083	1303	7,213		673	7886
6/9/2014	12.1	43.2	7.1	37.6	-42.9	95	1612	1292	2332	1159	2987	1329	6,931		634	7565
6/10/2014	10.8	40.9	7.4	40.9	-45.0	83	1636	1302	2424	1148	3003	1289	7,063		586	7649
6/11/2014	10.7	42.4	7.7	39.2	-44.0	85	1653	1300	2492	1136	3031	1279	7,176		536	7711
6/12/2014	10.5	44.6	6.8	38.1	-44.2	88	1674	1277	2456	1094	3069	1297	7,199		538	7737
6/13/2014	10.9	41.3	7.2	40.6	-44.4	83	1487	1161	2248	1100	2979	1308	6,714		558	7272
6/14/2014							1762	1356	2590	1189	3184	1256	7,536		489	8025
6/15/2014							1764	1344	2596	1185	3176	1330	7,536		503	8040
6/16/2014	10.4	40.8	7.5	41.3	-44.0	95	1880	1367	2628	1204	3361	1345	7,870		436	8306
6/17/2014	12.1	48.2	5.8	33.9	-43.2	97	2437	1318	2919	1184	2678	1442	8,034		527	8561
6/18/2014	10.6	43.3	6.3	39.8	-44.1	102	2154	1374	2771	1130	2853	1482	7,778		642	8420
6/19/2014	10.5	40.1	7.1	42.3	-44.4	102	1938	1358	2725	1203	2686	1524	7,349		846	8195
6/20/2014	10.7	42	7	40.3	-44.4	102	1914	1338	2800	1300	2606	1432	7,320		863	8182
6/21/2014							1915	1351					1,915		830	
6/22/2014							1886	1386					1,886		603	
6/23/2014	10.5	42	7.4	40.1	-44.1	95	1955	1347	2818	1283	2644	1515	7,417		582	7998
6/24/2014	10.4	41.6	7.3	40.7	-43.7	92	1933	1353	2695	1212	2603	1517	7,231		742	7974
6/25/2014	10.4	42.4	7	40.2	-44.1	97	2102	1353	3033	1288	2708	1517	7,843		262	8105
6/26/2014	10.1	41.5	7.3	41.1	-44.0	104	1954	1339	3540	1311	2914	1300	8,408			8408
6/27/2014	11.9	50.9	5.2	32	-43.1	101	1577	1144	3505	1241	3471	1349	8,553			8553
6/28/2014							1971	1350	3501	1256	3462	1404	8,934			8934

Date	Flare Sta #2 FL-100						Flare Sta #3 FL-120				Flare Sta #1 FL-140		Total Utility Flare Flow	East Side Flare		Total Flow
	CH4	CO2	O2	Bal.	Press./Vac.	Gas Inlet Temp (°F)	Flow (scfm)	Flare Temp.	Flow (scfm)	Flare Temp.	Flow (scfm)	Flare Temp.	Flow (scfm)	CH4	Flow (scfm)	scfm
6/29/2014							1887	1329	3390	1210	3334	1386	8,611			8611
6/30/2014	10.9	44.7	6.8	37.6	-43.7	101	2027	1298	3427	1189	3360	1391	8,814			8814
7/1/2014	11.9	48.5	5.4	34.2	-44.6	103	1902	1304	3617	1243	3662	1449	9,181			9181
7/2/2014	12.2	49.9	5.2	32.7	-43.9	104	1599	1301	3406	1311	3221	1471	8,226			8226
7/3/2014	11.6	46.2	5.8	36.4	-43.6	91	1795	1290	3538	1281	3484	1453	8,816			8816
7/4/2014							1933	1317	3623	1306	3611	1391	9,167			9167
7/5/2014							1537	1271	3229	1215	3140	1368	7,906			7906
7/6/2014							1960	1324	3527	1245	3497	1441	8,985			8985
7/7/2014	11.8	48.3	5.5	34.4	-44.2	102	2042	1310	3529	1263	3529	1465	9,123			9123
7/8/2014	12	47.1	5.7	35.2	-43	95	2083	1286	3324	1310	3096	1352	8,503			8503
7/9/2014	12.2	51.9	4.7	31.2	-44.5	110	2114	1307	2898	1175	3432	1407	8,444			8444
7/10/2014	12.7	51	4.4	31.9	-44.8	105	2103	1293	2906	1212	3474	1350	8,483			8483
7/11/2014	11.4	46.3	6.4	35.9	-44	92	2292	1286	2656	1050	3085	1232	8,033			8033
7/12/2014							2308	1334	3229	1201	3859	1458	9,396			9396
7/13/2014							2253	1326	3183	1203	3818	1460	9,254			9254
7/14/2014	12.8	50.4	4.8	32	-43.8	110	2059	1264	3045	1166	3509	1429	8,613			8613
7/15/2014	11.6	45.8	6.3	36.3	-43.5	86	2057	1295	2998	1212	3377	1444	8,432			8432
7/16/2014	10.7	42.5	7.1	39.7	-46.9	99	2190	1343	3185	1210	3743	1445	9,118			9118
7/17/2014	11.4	46.4	5.9	36.3	-49.5	103	2232	1336	3121	1229	3601	1217	8,953			8953
7/18/2014	11.3	44.6	6.3	37.8	-48.9	102	2294	1356	3303	1337	3853	1285	9,450			9450
7/19/2014							2349	1338	3116	1207	3525	1283	8,989			8989
7/20/2014							2375	1378	3263	1225	3875	1304	9,514			9514
7/21/2014	12.1	47.8	5.6	34.5	-49	115	2384	1366	3317	1227	3877	1359	9,578			9578
7/22/2014	11.3	44.5	6.3	37.9	-49.1	99	2440	1362	3344	1218	3913	1399	9,697			9697
7/23/2014	10.8	43.6	6.8	38.8	-47.1	101	2290	1327	3250	1233	3845	1477	9,385			9385
7/24/2014	11.4	43.5	6.5	38.6	-46.7	93	2184	1335	3167	1227	3718	1450	9,069			9069
7/25/2014	11.4	43.8	6.7	38.2	-47.2	91	2128	1376	3187	1219	3659	1381	8,975			8975
7/26/2014							2094	1226	2848	1121	3229	1229	8,172		243	8415
7/27/2014							2354	1343	3180	1268	3304	1323	8,838		576	9414
7/28/2014	12.6	47.3	5.6	34.5	-47	102	1981	1271	3048	1215	3377	1312	8,407		222	8629
7/29/2014	10.3	41.4	7.6	40.7	-47	89	2103	1340	3097	1180	3637	1375	8,837			8837
7/30/2014	10.5	42.2	7	40.3	-47	97	2197	1338	3081	1169	3723	1368	9,001			9001
7/31/2014	12	48.3	5.3	34.4	-47.2	107	2200	1340	3091	1186	3663	1305	8,954			8954
8/1/2014	11.5	48.2	5.5	34.8	-47	111	2121	1352	3072	1205	3620	1334	8,814			8814
8/2/2014							2135	1341	3103	1168	3650	1338	8,888			8888
8/3/2014							2235	1307	2952	1157	3484	1311	8,671			8671
8/4/2014	10.9	48.8	5.5	34.8	-47	119	2272	1366	3206	1216	3806	1404	9,284			9284
8/5/2014	11.8	44.4	6	37.8	-47.4	113	2241	1349	3193	1262	3748	1382	9,182		32	9215
8/6/2014	11	44.5	6.8	37.7	-46.4	98	1925	1143	2744	1105	3206	1181	7,875			7875
8/7/2014	10.6	44	7	38.4	-46.8	87	2040	1334	3135	1243	3496	1399	8,671			8671
8/8/2014	10.7	43	6.9	39.4	-46.4	87	2128	1345	3087	1190	3615	1470	8,830			8830
8/9/2014							2070	1326	3039	1182	3552	1477	8,661			8661
8/10/2014							2128	1343	3102	1194	3652	1492	8,882			8882
8/11/2014	12	45.2	5.7	37.2	-47.5	101	2153	1331	3096	1249	3674	1490	8,923			8923
8/12/2014	11.9	47.8	6.2	34.1	-47.5	91	2065	1333	3098	1244	3588	1497	8,751			8751
8/13/2014	11.4	46.9	6.6	35.1	-46.8	93	2147	1348	3158	1178	3691	1491	8,996			8996
8/14/2014	11.4	49.4	5.6	33.6	-47.7	99	2240	1343	3048	1216	3588	1469	8,877			8877
8/15/2014	17.8	55.7	4.5	22	-46.9	111	2229	1356	3152	1234	3759	1455	9,140			9140
8/16/2014							2080	1357	3095	1151	3589	1455	8,763			8763
8/17/2014							2081	1341	3095	1170	3596	1477	8,772			8772
8/18/2014	16	49.4	5.5	29.1	-47.2	99	2149	1343	3221	1188	3656	1480	9,026			9026
8/19/2014	11.4	51.8	5.5	31.3	-50.2	111	2152	1355	3420	1231	3699	1440	9,270			9270
8/20/2014	12.2	50.5	5.2	32.1	-47.2	119	2107	1334	3340	1293	3713	1463	9,159			9159
8/21/2014	17.4	55	4	23.6	-46.3	120	2138	1331	3319	1180	3629	1400	9,086			9086
8/22/2014	12.6	51	3.8	32.6	-46.9	124	2249	1331	3397	1219	3814	1442	9,460			9460
8/23/2014							2359	1353	3495	1265	3905	1479	9,759			9759
8/24/2014							2275	1257	3256	1181	3458	1351	8,988			8988
8/25/2014	11.4	57.1	5.8	25.7	-47.1	125	2363	1375	3496	1274	3936	1507	9,794			9794
8/26/2014	10.4	46.2	6.6	36.8	-47.8	108	2094	1281	3061	1171	3501	1382	8,656			8656
8/27/2014	10.6	45.7	6.9	36.8	-47.7	102	2156	1355	3325	1295	3816	1471	9,297			9297
8/28/2014	10.7	45	7.1	37.2	-47.6	102	2073	1375	3170	1261	3863	1514	9,105			9105
8/29/2014	10.8	48.4	7	33.8	-47.5	113	2012	1374	3200	1185	3749	1510	8,961			8961
8/30/2014							1966	1371	3437	1169	3474	1510	8,877			8877
8/31/2014							2142	1377	3464	1213	3640	1481	9,245			9245
9/1/2014							1954	1297	3383	1195	3154	1368	8,491			8491
9/2/2014	12.6	48.6	6.8	32	-46.8	96	1670	1343	3740	1294	3136	1460	8,546			8546
9/3/2014	10.6	46.5	6.8	36.1	-46.7	107	1739	1359	3630	1234	3479	1467	8,848		34	8882

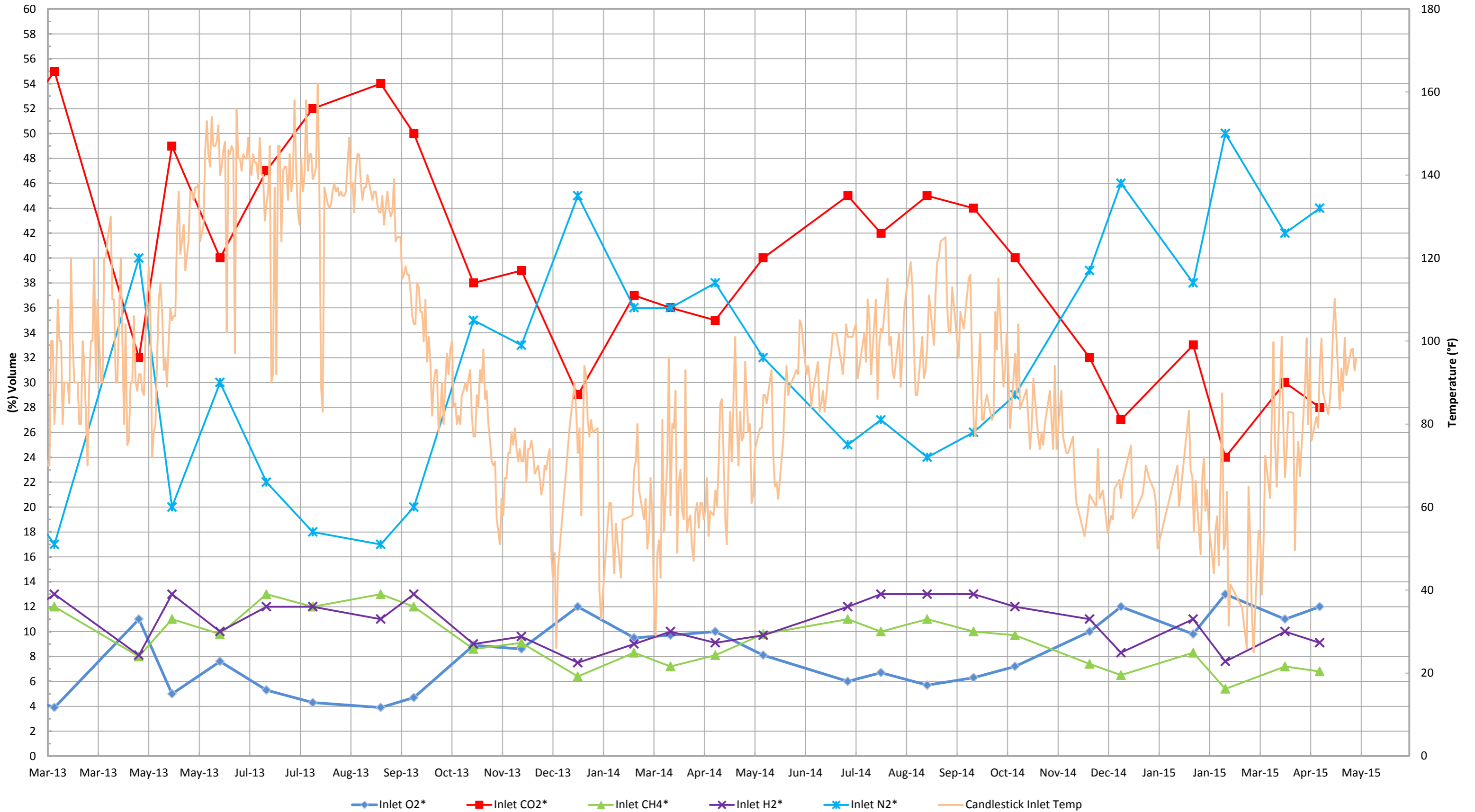
Date	Flare Sta #2 FL-100						Flare Sta #3 FL-120				Flare Sta #1 FL-140				Total Utility Flare Flow		East Side Flare		Total Flow
	CH4	CO2	O2	Bal.	Press./Vac.	Gas Inlet Temp (°F)	Flow (scfm)	Flare Temp.	Flow (scfm)	Flare Temp.	Flow (scfm)	Flare Temp.	Flow (scfm)	Flare Temp.	Flow (scfm)	CH4	Flow (scfm)	scfm	
9/4/2014	10.4	43.6	6.4	39.6	-47.6	105	2298	1390	3323	1214	3381	1479	9,002				9002		
9/5/2014	9.3	39.4	7.9	43.4	-46	103	2320	1377	3321	1277	3467	1446	9,108				9108		
9/6/2014							2009	1395	3271	1236	3115	1457	8,395				8395		
9/7/2014							2102	1372	3256	1258	3212	1419	8,569				8569		
9/8/2014	12.6	51.1	4.8	31.5	-47.7	115	2080	1382	3243	1216	3204	1434	8,526				8526		
9/9/2014	11.7	52.3	5.3	30.7	-49.2	116	2037	1364	2960	1187	3526	1504	8,523				8523		
9/10/2014	11	49.1	6.6	33.3	-49.6	95	1916	1346	2806	1179	3721	1457	8,443				8443		
9/11/2014	10.8	44.8	7.5	36.9	-49.4	80	1799	1327	2651	1176	3450	1474	7,900				7900		
9/12/2014	10.8	44	7.9	37.3	-49.6	77	1720	1312	2725	1155	3374	1475	7,819				7819		
9/13/2014							1782	1335	2740	1138	3477	1449	7,999				7999		
9/14/2014							1877	1355	2674	1127	3618	1449	8,169				8169		
9/15/2014	11.7	48.2	6.1	34	-50.2	102	1928	1370	2654	1138	3595	1483	8,176				8176		
9/16/2014	11.1	45	7.2	36.7	-50.4	81	1935	1356	2612	1167	3576	1448	8,123				8123		
9/17/2014	11.3	44.9	7.3	36.5	-49.7	81	1927	1379	2704	1176	3503	1487	8,134				8134		
9/18/2014	10.5	43.8	7.6	38.1	-50	85	2058	1364	2741	1247	3716	1467	8,515				8515		
9/19/2014	10.4	43.4	7.3	38.9	-50.3	87	2111	1410	2801	1181	3769	1508	8,681				8681		
9/20/2014							2259	1360	3125	1162	3156	1398	8,540				8540		
9/21/2014							2119	1313	3156	1223	2785	1401	8,060				8060		
9/22/2014	11.5	43.5	7.7	37.3	-49.5	81	2177	1388	3165	1269	2978	1403	8,320				8320		
9/23/2014	9.9	43.3	8	38.8	-49.7	82	2210	1407	3257	1277	3008	1406	8,476				8476		
9/24/2014	10	42	7.3	40.7	-50.2	107	2214	1443	3152	1258	2970	1402	8,336			415	8752		
9/25/2014	9.5	41.2	8.2	41.1	-49.4	98	2215	1453	3049	1256	2981	1428	8,244			721	8966		
9/26/2014	10.5	51.6	6.1	31.8	-49.7	115	2375	1418	3259	1282	3139	1414	8,772			231	9004		
9/27/2014							2357	1392	3341	1273	3151	1405	8,850				8850		
9/28/2014							2409	1393	3336	1270	3164	1402	8,909				8909		
9/29/2014	10.6	44.2	7.4	37.8	-49.1	89	2244	1380	3105	1252	3025	1443	8,374			467	8841		
9/30/2014	10.1	40.3	8.2	41.4	-49.5	93	2332	1383	3235	1318	3044	1405	8,611			233	8844		
10/1/2014	10.6	44.3	7.3	37.8	-49.2	102	2322	1378	3331	1272	3027	1437	8,680			49	8729		
10/2/2014	10.6	44.4	7.2	37.8	-48.6	93	2167	1364	3262	1318	2859	1401	8,288				8288		
10/3/2014	10.4	43.5	7.9	38.2	-49.8	79	1983	1359	3138	1355	2690	1475	7,810				7810		
10/4/2014							1932	1375	3078	1342	2691	1485	7,701				7701		
10/5/2014							2042	1394	3205	1288	2772	1444	8,020				8020		
10/6/2014	11.7	39.4	7.2	41.7	-49.08	96.9	2148	1376	3171	1326	2829	1469	8,148				8148		
10/7/2014	10.7	45.9	7.3	36.1	-49.9	87	2109	1374	3206	1312	2824	1468	8,140				8140		
10/8/2014	10.9	50.6	6.5	32	-49.3	104	2189	1377	3126	1275	2869	1469	8,184				8184		
10/9/2014	4.2	59.5	6	30.3	-49.7	83.6	2043	1354	3124	1346	2727	1473	7,894				7894		
10/10/2014							1953	1372	3093	1352	2625	1473	7,671				7671		
10/11/2014							1949	1377	3073	1346	2629	1443	7,652				7652		
10/12/2014							2020	1380	3062	1274	2647	1437	7,729				7729		
10/13/2014	6.7	53.9	6.4	33	-50.37	88.4	2023	1353	3064	1273	2580	1448	7,666				7666		
10/14/2014							1922	1360	3063	1322	2545	1478	7,530				7530		
10/15/2014	10.4	43.4	8.1	38.1	-49.7	74	1952	1356	3035	1301	2587	1461	7,574				7574		
10/16/2014	10.8	44.3	7.4	37.5	-49.7	79	2087	1388	3102	1266	2732	1465	7,921				7921		
10/17/2014	10.8	45.6	6.8	36.8	-50	91	2066	1355	3099	1338	2665	1488	7,830				7830		
10/18/2014							1961	1379	3065	1280	2585	1429	7,612				7612		
10/19/2014							1992	1400	3061	1245	2620	1459	7,673				7673		
10/20/2014	11.4	43.6	7.9	37.1	-49.9	77	1989	1328	3183	1303	2696	1456	7,868			28	7896		
10/21/2014	10.9	42.9	8.4	37.8	-49.6	74	2078	1376	3091	1313	2712	1489	7,881				7881		
10/22/2014	10.5	42.6	8.1	38.8	-49.9	78	2063	1395	3109	1247	2670	1463	7,842				7842		
10/23/2014	10.3	43.4	8.2	38.1	-49.6	75	2052	1413	3095	1281	2654	1444	7,800				7800		
10/24/2014	10.8	45.1	7.7	36.4	-49.5	80	2153	1396	3139	1274	2760	1462	8,052				8052		
10/25/2014							2288	1385	3202	1282	2840	1455	8,330				8330		
10/26/2014							2192	1387	3218	1278	2783	1488	8,193				8193		
10/27/2014	10.6	43.1	7.5	38.8	-49.7	88	2217	1388	3219	1259	2774	1466	8,210				8210		
10/28/2014	10.4	42.6	8	39	-49.6	81	2058	1375	3108	1325	2622	1443	7,788				7788		
10/29/2014	10.3	43.5	7.8	38.4	-49.4	74	2003	1383	3076	1294	2584	1450	7,664			95	7759		
10/30/2014	9.6	41.8	8.3	40.3	-50	94	1980	1436	3037	1294	2552	1481	7,569			307	7877		
10/31/2014	9.9	41.1	8.7	40.3	-49.3	74	1955	1377	3079	1306	2498	1379	7,532				7532		
11/1/2014							1959	1418	3066	1283	2555	1470	7,579				7579		
11/2/2014							1944	1424	3135	1276	2496	1490	7,574				7574		
11/3/2014	10.2	41.5	8.4	39.9	-49.7	88	2129	1409	3201	1271	2614	1512	7,944			41	7984		
11/4/2014	11.5	41.2	8	39.3	-49.5	77	2007	1379	3213	1334	2524	1453	7,744				7744		
11/5/2014	11	41.6	8.1	39.3	-49.9	75	2055	1391	3157	1323	2631	1457	7,843				7843		
11/6/2014	10.6	40.7	8.5	40.2	-49.7	73	1950	1368	3148	1365	2488	1424	7,585				7585		
11/7/2014	10.6	43.5	8	37.9	-49.7	73	2003	1402	3147	1275	2537	1455	7,687				7687		
11/8/2014							2008	1374	3158	1348	2513	1425	7,680				7680		
11/9/2014							2040	1398	3172	1285	2544	1437	7,756				7756		

Date	Flare Sta #2 FL-100						Flare Sta #3 FL-120				Flare Sta #1 FL-140				Total Utility Flare Flow		East Side Flare		Total Flow	
	CH4	CO2	O2	Bal.	Press./Vac.	Gas Inlet Temp (°F)	Flow (scfm)		Flare Temp.	Flow (scfm)		Flare Temp.	Flow (scfm)		Flare Temp.	Flow (scfm)		CH4	Flow (scfm)	scfm
11/10/2014	11.1	43.6	7.8	37.5	-49.7	77	2074	1398	3151	1257	2810	1491			8,034					8034
11/11/2014	9.3	40.3	9.1	41.3	-50	67	1844	1360	2929	1314	2655	1427			7,428					7428
11/12/2014	9.6	39.8	8.9	41.7	-49.6	61	1764	1364	2905	1280	2563	1461			7,232					7232
11/13/2014							1741	1357	2806	1291	2657	1513			7,204					7204
11/14/2014	9.5	40.2	8.5	41.8	-49.5	58	1969	1413	2740	1261	2539	1555			7,247					7247
11/15/2014							2154	1460	2728	1250	2440	1501			7,321					7321
11/16/2014							2090	1414	2772	1281	2419	1511			7,280					7280
11/17/2014	9.1	35.8	9.6	45.5	-49.9	53	1374	1081	2392	1173	2226	1299			5,992					5992
11/18/2014							1625	1365	2741	1257	2682	1283			7,048					7048
11/19/2014	10.2	40.4	8.4	41	-51	59	1849	1349	2472	1245	2400	1269			6,720			8		6729
11/20/2014	9.6	39.5	9.1	41.8	-50	63	1640	1218	2968	1191	2603	1211			7,210			22		7232
11/21/2014							2080	1428	2886	1202	2734	1368			7,700					7700
11/22/2014							2341	1504	3025	1184	2966	1354			8,333					8333
11/23/2014							2133	1436	2864	1197	3147	1347			8,145					8145
11/24/2014	9.8	40.1	9.5	40.6	-46.4	60	1821	1377	2537	1297	2859	1245			7,217					7217
11/25/2014	9.8	39.9	8.9	41.4	-46.8	74	1879	1391	2437	1179	2811	1331			7,127					7127
11/26/2014	9.8	39.8	9.2	41.2	-46.6	62	1958	1401	2474	1065	2811	1359			7,244					7244
11/27/2014							2050	1406	2193	1123	2733	1329			6,976					6976
11/28/2014	9.4	39.6	9.2	41.8	-47.3	64	2354	1430	2234	1094	2838	1353			7,426					7426
11/29/2014							2268	1435	2312	1116	2963	1339			7,543					7543
11/30/2014							2313	1433	2510	1157	3077	1306			7,901					7901
12/1/2014	7.5	37.7	10.9	43.9	-47.19	53.7	2179	1425	2453	1089	2896	1359			7,528					7528
12/2/2014							1956	1380	2411	1110	2689	1338			7,057					7057
12/3/2014	9.3	31.6	10.3	48.8	-44.09	57.9	1904	1422	2225	1206	2799	1377			6,928			131		7059
12/4/2014	9.5	39.6	8.8	42.1	-48.8	57	1891	1402	2151	1219	2812	1352			6,855			158		7012
12/5/2014	10.3	32.6	9.7	47.4	-51.04	64.4	2017	1424	2463	1237	2954	1361			7,433					7433
12/6/2014							1951	1422	2485	1185	2877	1362			7,312					7312
12/7/2014							2046	1476	2613	1189	3008	1413			7,666					7666
12/8/2014	9.5	29.5	11	50	-49.33	66.6	2016	1384	2719	1179	2984	1345			7,718			61		7780
12/9/2014	8.3	29.9	11.4	50.4	-51.22	62.2	2004	1410	2626	1216	2984	1377			7,614			21		7636
12/10/2014	8.4	30.3	10.8	50.5	-49.82	66.4	2001	1516	2507	1248	2970	1461			7,478			153		7631
12/11/2014							2055	1518	2660	1281	3192	1485			7,907			184		8091
12/12/2014							2192	1566	2688	1220	3110	1480			7,990			202		8192
12/13/2014							2338	1556	2845	1243	3352	1466			8,535					8535
12/14/2014							2333	1504	2783	1258	3279	1417			8,395					8395
12/15/2014	9.3	29.5	11	50.2	-50.24	74.8	2289	1466	2857	1304	3238	1398			8,384					8384
12/16/2014	7.3	26.3	12.7	53.7	-49.7	57.3	2389	1437	2714	1288	3038	1405			8,141					8141
12/17/2014							2350	1479	2633	1227	2841	1461			7,824			187		8011
12/18/2014							2504	1568	2575	1239	2997	1500			8,076					8076
12/19/2014							2326	1466	2418	1198	2745	1389			7,489			48		7537
12/20/2014							2077	1499	2804	1220	2485	1404			7,366					7366
12/21/2014							2131	1467	2964	1284	2510	1386			7,606					7606
12/22/2014	9.9	39.2	9	41.9	-49.5	63	2008	1374	2838	1257	2440	1356			7,286					7286
12/23/2014	8.8	38.1	9.3	43.8	-45	66	2286	1484	2956	1268	2519	1398			7,762					7762
12/24/2014	9.1	38.3	10.3	42.3	-49.4	70	2279	1459	3110	1316	2660	1421			8,049					8049
12/25/2014							2345	1517	3145	1281	2687	1440			8,177					8177
12/26/2014	8.1	32.7	10.5	48.7	-48.9	67	2400	1523	3102	1259	2682	1429			8,184					8184
12/27/2014							2255	1467	3003	1271	2585	1418			7,843					7843
12/28/2014							2203	1510	3033	1268	2546	1449			7,782					7782
12/29/2014	8	33.8	10.3	47.9	-49.9	64	2200	1548	3025	1263	2619	1485			7,845					7845
12/30/2014	7.7	32.8	10.9	48.6	-49.2	61	2212	1506	2871	1253	2668	1471			7,751					7751
12/31/2014	8	32.2	10.8	49	-50.5	50	2110	1525	2827	1219	2827	1497			7,764					7764
1/1/2015							2181	1484	2844	1220	2607	1430			7,631					7631
1/2/2015							2120	1505	2678	1198	2441	1418			7,239			8		7247
1/3/2015							2127	1486	2859	1245	2511	1416			7,498					7498
1/4/2015							1946	1419	2718	1251	2523	1391			7,188					7188
1/5/2015							1729	1348	2336	1201	2421	1374			6,486					6486
1/6/2015							1428	1062	1893	1109	1585	812			4,907			149		5055
1/7/2015							1548	1318	2527	1281	2752	1352			6,827					6827
1/8/2015							1719	1473	2894	1282	2904	1418			7,517					7517
1/9/2015							1429	1340	2505	1250	2810	1349			6,744					6744
1/10/2015							1695	1442	2837	1230	2766	1348			7,298					7298
1/11/2015							1787	1512	2896	1212	3083	1483			7,766					7766
1/12/2015	10.2	32.4	11.4	46	23.05	70	1790	1448	2987	1307	2869	1423			7,647					7647
1/13/2015	9.3	33	12.1	45.6	23.41	60	1832	1495	3031	1276	2662	1383			7,525					7525
1/14/2015							1702	1443	2962	1229	1559	891			6,223			413		6636
1/15/2015							1634	1310	2578	1154	2601	1324			6,813			48		6861

Date	Flare Sta #2 FL-100						Flare Sta #3 FL-120				Flare Sta #1 FL-140				Total Utility Flare Flow		East Side Flare		Total Flow
	CH4	CO2	O2	Bal.	Press./Vac.	Gas Inlet Temp (°F)	Flow (scfm)	Flare Temp.	Flow (scfm)	Flare Temp.	Flow (scfm)	Flare Temp.	Flow (scfm)	Flare Temp.	Flow (scfm)	CH4	Flow (scfm)	scfm	
1/16/2015							1723	1394		2288	1239		2880	1409			6,890		6890
1/17/2015							2130	1458		2085	1232		3170	1416			7,385		7385
1/18/2015							2025	1416		1999	1209		3198	1400			7,223		7223
1/19/2015	9.9	42.9	7.8	39.4	-44.39	83.2	2069	1446		1824	1225		3246	1442			7,139		7139
1/20/2015	9.1	35.9	11.4	43.6	-44.02	68.8	2032	1403		1771	1193		3173	1414			6,977		6977
1/21/2015	10.3	37.3	8.6	43.8	-44.27	67.4	1815	1380		1876	1210		3121	1387			6,812		6812
1/22/2015	8.4	31.6	10.8	49.2	-44.14	54	1616	1401		2052	1205		3129	1419			6,796		6796
1/23/2015	10.8	33.8	8.7	46.7	-44.93	66.3	1790	1393		1877	1212		3123	1405			6,790		6790
1/24/2015							1949	1371		1661	1215		3118	1407			6,728	68	6797
1/25/2015							1728	1310		1409	1234		2868	1366			6,005	220	6226
1/26/2015	9.2	27.7	11.7	51.4	-45.24	48.6	1472	1356		1828	1204		2924	1427			6,224	399	6623
1/27/2015	10.7	36.2	9.3	43.8	-44.27	67.2	1775	1392		1775	1232		3004	1398			6,813		6813
1/28/2015	9.6	35.9	8.5	46	-44.44	72	1779	1404		2125	1277		3054	1413			6,958		6958
1/29/2015	8.1	30.6	11.9	49.4	-43.72	59.1	1787	1389		2073	1296		3059	1341			6,918	403	7321
1/30/2015	10	36.3	9	44.7	-44.44	64.1	1594	1305		1741	1176		3167	1361			6,502	130	6632
1/31/2015	10.6	36.7	8.4	44.3	-43.41	55.2	1460	1294		1321	1246		3033	1380			5,814		5814
2/1/2015							1557	1310		1398	1283		3203	1364			6,158	14	6172
2/2/2015	9.5	28.9	11.8	49.8	-43.6	48.5	1269	1310		1660	1220		3257	1415			6,186	251	6438
2/3/2015	8.7	28	13.1	50.2	-44.45	44.1	1791	1502		1432	1159		2997	1499			6,220	452	6672
2/4/2015	9.6	27.1	12.1	51.2	-44.88	54.4	1578	1307		1665	1213		2569	1439			5,812	502	6314
2/5/2015	9.9	32.3	10.6	47.2	-43.72	57.8	2139	1458		2070	1217		2120	1430			6,330	113	6443
2/6/2015	10.1	36.2	10.9	42.8	-44.27	46	1974	1421		2126	1226		2609	1405			6,709	56	6765
2/7/2015							2174	1370		2153	1249		2734	1353			7,061		7061
2/8/2015	9.4	37.2	10	43.4	-43.84	87.4	2317	1393		2552	1291		2786	1362			7,655		7655
2/9/2015	7.1	28.1	13.2	51.6	-44.39	49.9	1904	1434		2826	1290		2717	1451			7,447		7447
2/10/2015	8.3	28.4	11.9	51.4	-44.7	51.4	2356	1450		2568	1254		2466	1488			7,390	6	7395
2/11/2015	9.3	30.3	11.5	48.9	-43.66	63.7	2544	1441		2569	1273		2363	1459			7,476		7476
2/12/2015	8.1	25.7	12.7	53.5	-44.76	31.4	2245	1464		2452	1264		2181	1339			6,877	165	7042
2/13/2015	7	23.4	11.7	57.9	-44.93	41.4	1771	1434		1775	1194		2517	1474			6,064	363	6426
2/14/2015							1657	1389		1955	1271		2729	1423			6,341	365	6706
2/15/2015							1500	1470		2018	1208		2613	1529			6,131	374	6505
2/16/2015							2368	1488		1261	840		3104	1527			6,733	368	7101
2/17/2015							2158	1532		2008	1195		2624	1556			6,790	457	7247
2/18/2015							2222	1467		1924	1236		2506	1520			6,652	736	7387
2/19/2015							1301	1135		2411	1199		2304	1570			6,016	799	6815
2/20/2015	7.8	24.1	12.2	55.9	-43.78	35.8	1597	1524		2418	1233		2653	1584			6,669	787	7456
2/21/2015							1921	1561		2162	1251		2570	1633			6,653	756	7409
2/22/2015							2021	1570		2241	1226		2523	1620			6,784	744	7528
2/23/2015	7.2	24.3	11.7	56.8	-43.6	25.9	2066	1603		2228	1151		2418	1665			6,712	772	7485
2/24/2015	8	26.6	12.4	53	-45.3	64.9	2067	1526		1872	1222		2714	1627			6,653	807	7461
2/25/2015	6.8	25.7	12.3	55.2	-44.87	52.5	1649	1488		2558	1215		2221	1521			6,428	741	7169
2/26/2015	7.5	21.4	12.4	58.7	-44.33	34.5	1773	1549		2772	1259		2274	1545			6,819	684	7503
2/27/2015	7.4	24.9	12.7	55	-45.18	25	1788	1606		2742	1240		2190	1599			6,721	733	7454
2/28/2015							1713	1572		2662	1236		2168	1592			6,543	815	7358
3/1/2015							1622	1540		2580	1266		2171	1569			6,373	826	7199
3/2/2015	8.4	26.3	12.2	53.1	-44.27	54.3	1706	1545		2729	1302		2343	1571			6,778	616	7394
3/3/2015	9.5	22.7	10.9	56.9	-43.96	52.4	1585	1458		2569	1315		2227	1486			6,382	783	7165
3/4/2015	8.1	27.3	11.7	52.9	-43.89	38.9	1764	1481		2797	1253		2301	1513			6,861	321	7182
3/5/2015	7.5	30.1	11.7	50.7	-34.62	51.6	1819	1482		2833	1239		2310	1504			6,963		6963
3/6/2015	8.3	36.2	10.4	45.1	-34.62	72.4	1721	1413		2760	1260		2295	1405			6,776		6776
3/7/2015							1732	1366		2783	1318		2480	1424			6,995		6995
3/8/2015							1731	1437		2777	1336		2504	1435			7,012		7012
3/9/2015	7.9	36.2	9.9	46	-33.7	62.2	1736	1420		2670	1312		2624	1455			7,031		7031
3/10/2015	10	36.8	9.3	43.9	-34.21	81.4	1445	1300		2561	1240		2771	1401			6,777		6777
3/11/2015	10.4	35.2	9.2	45.2	-33.66	99.7	1957	1407		2222	1236		2983	1437			7,163	108	7271
3/12/2015	9.1	33.9	10.1	46.9	-35.9	74.8	1459	1342		2627	1298		3126	1437			7,212	18	7230
3/13/2015	9.3	33.8	9.2	47.7	-33.66	64.9	1652	1300		1943	1110		3031	1329			6,627		6627
3/14/2015							1882	1283		1687	1025		2843	1327			6,413	376	6788
3/15/2015							1874	1406		1322	1124		2952	1434			6,148	810	6958
3/16/2015	10.5	34	9.2	46.3	-34.19	101.1	1730	1407		1649	1233		3141	1442			6,520	830	7350
3/17/2015	8.6	32.5	9.8	49.1	-34.55	78.2	1989	1479		1687	1232		3319	1423			6,995	299	7294
3/18/2015	8.7	37.1	8.9	45.3	-34.13	67.2	1899	1451		1625	1182		3268	1492			6,792	236	7028
3/19/2015	8.3	31.4	10.5	49.8	-39.8	74	2065	1502		1651	1181		3341	1494			7,056	276	7332
3/20/2015	8.7	32.7	10.4	48.2	-39.99	82.9	2305	1503		1753	1222		3547	1456			7,606		7606
3/21/2015							2472	1521		1959	1233		3426	1429			7,856		7856
3/22/2015							2305	1480		2218	1284		3393	1485			7,916		7916
3/23/2015	9	34.5	10.2	46.3	-39.19	82.7	1998	1460		2095	1289		2795	1395			6,888		6888

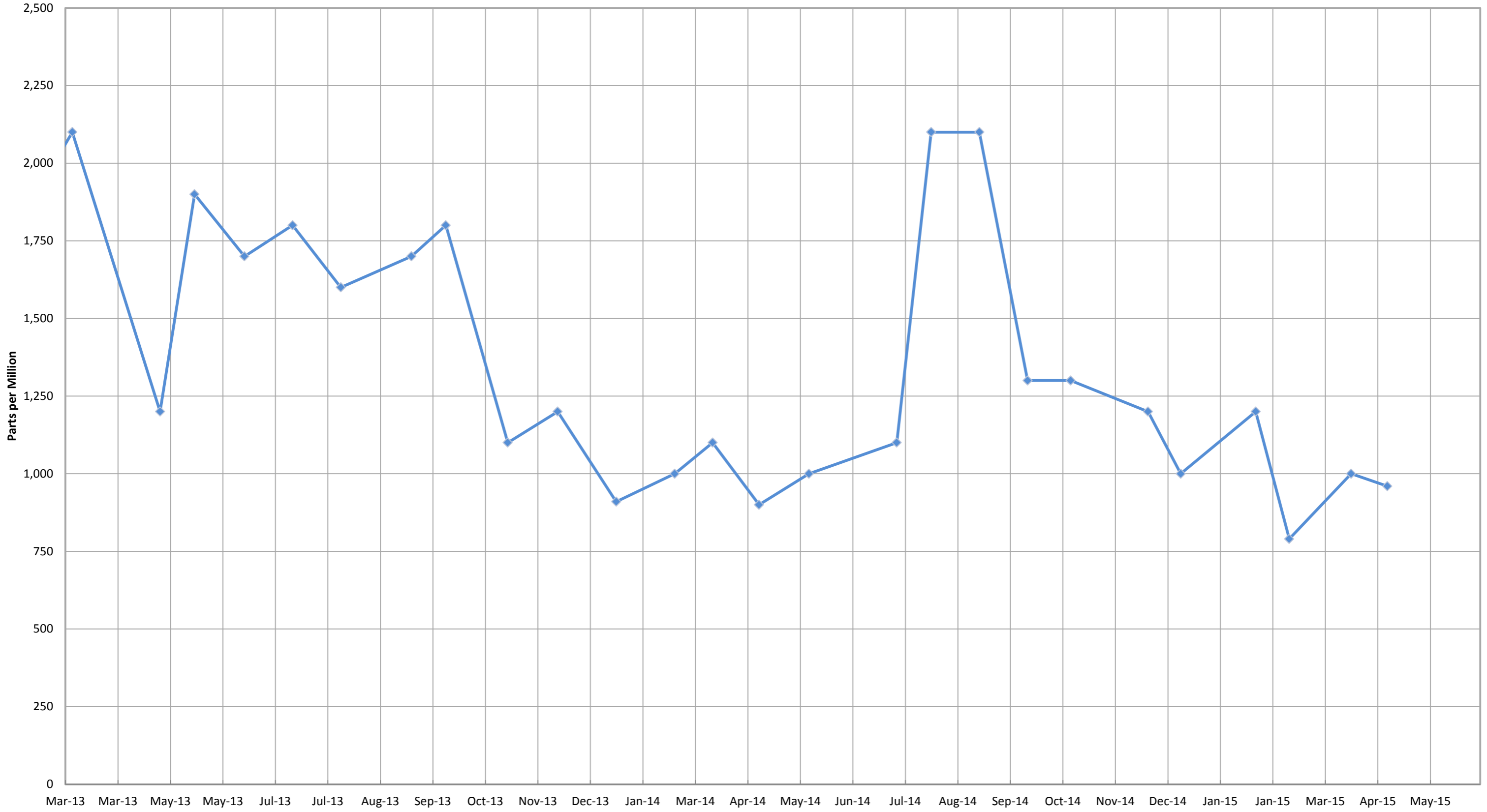
Date							Flare Sta #2 FL-100		Flare Sta #3 FL-120		Flare Sta #1 FL-140		Total Utility Flare Flow	East Side Flare		Total Flow
	CH4	CO2	O2	Bal.	Press./Vac.	Gas Inlet Temp (°F)	Flow (scfm)	Flare Temp.	Flow (scfm)	Flare Temp.	Flow (scfm)	Flare Temp.	Flow (scfm)	CH4	Flow (scfm)	scfm
3/24/2015	7.7	27.7	11.8	52.8	-39.62	49.6	1616	1393	2171	1268	2496	1436	6,284			6284
3/25/2015	7.6	29.4	11.7	51.3	-39.56	68	1937	1442	2259	1291	2545	1422	6,741			6741
3/26/2015	8.4	32.5	10.2	48.9	-40.48	75.8	1878	1420	1921	1222	2440	1366	6,239			6239
3/27/2015	7.8	35.1	10.1	47	-40.54	67.5	1777	1427	1836	1219	2589	1410	6,202			6202
3/28/2015							1811	1436	1708	1186	2644	1452	6,163			6163
3/29/2015							1822	1316	1586	1184	2198	1284	5,606			5606
3/30/2015	8	29.6	11.4	51	-40.48	88.9	2209	1479	1458	1207	2371	1473	6,038		513	6551
3/31/2015	8.3	32.6	10	49.1	-39.68	100.7	2246	1484	1531	1192	2257	1477	6,034		554	6588
4/1/2015	8.5	29.7	10.9	50.9	-39.8	79.9	1473	1454	1822	1291	1712	1427	5,007		18	5025
4/2/2015	10.4	35	9.4	45.2	-40.48	96	1518	1456	1768	1293	1740	1388	5,027			5027
4/3/2015	9.4	28.7	10.8	51.1	-39.88	76	1346	1401	1720	1334	1627	1377	4,693			4693
4/4/2015							1303	1465	1746	1308	1625	1444	4,674			4674
4/5/2015							1187	1497	1496	1302	1570	1468	4,253		440	4693
4/6/2015	9.6	30.4	10.5	49.5	-39.74	81.7	1191	1510	1205	1300	1515	1502	3,912		587	4498
4/7/2015	9.4	32.9	9.5	48.2	-39.32	79.1	1421	1491	1305	1334	1709	1430	4,435		164	4598
4/8/2015	8.6	34.1	10	47.3	-39.5	93.9	1452	1485	1695	1370	1766	1420	4,913			4913
4/9/2015	9.9	32.5	9.1	48.5	-39.57	100.6	1350	1421	1737	1399	1716	1371	4,804			4804
4/10/2015	10.7	34.6	8.9	45.8	-39.99	87.4	1148	1287	1241	1270	1484	1270	3,873		98	3971
4/11/2015							1250	1444	1478	1229	1598	1397	4,326			4326
4/12/2015							1246	1459	1626	1387	1652	1446	4,524			4524
4/13/2015	8.1	31.9	10.4	49.6	-40.05	82.4	1271	1401	1422	1331	1652	1361	4,345		60	4405
4/14/2015	9.3	34.8	9	46.9	-40.05	85.3	1256	1453	1452	1354	1654	1414	4,362		42	4404
4/15/2015	8.6	34.1	9.7	47.6	-40.54	91	1278	1399	1629	1379	1572	1414	4,479			4479
4/16/2015	9.6	33.7	9.5	47.2	-39.94	102.5	1410	1465	1682	1375	1700	1416	4,793			4793
4/17/2015	10.7	33.8	9.2	46.3	-39.5	110.2	1443	1443	1700	1401	1792	1429	4,936			4936
4/18/2015							1412	1449	1719	1403	1760	1446	4,891			4891
4/19/2015							1344	1415	1642	1399	1633	1385	4,619			4619
4/20/2015	8.5	32.5	10	49	-39.56	83.6	1243	1380	1612	1414	1489	1410	4,343			4343
4/21/2015	9.4	33.9	10	46.7	-39.88	93.4	1277	1373	1648	1384	1524	1436	4,450			4450
4/22/2015	9	32.3	9.5	49.2	-39.82	88	1267	1397	1622	1381	1485	1427	4,374			4374
4/23/2015	9.4	33.8	10.2	46.6	-40.24	100.8	1300	1452	1656	1382	1573	1423	4,529			4529
4/24/2015	9.5	33.9	10.3	46.3	-39.27	91.8	1289	1452	1616	1404	1490	1466	4,395			4395
4/25/2015							1378	1428	1576	1340	1246	1344	4,200			4200
4/26/2015							1268	1439	1672	1379	1490	1459	4,430			4430
4/27/2015	9	32.9	10.2	47.9	-40.12	98	1289	1452	1678	1386	1547	1445	4,514			4514
4/28/2015	9	34.2	9	47.8	-40.42	98.1	1312	1434	1667	1386	1465	1398	4,444			4444
4/29/2015	16.1	32.7	9.6	41.6	-39.45	92.9	1295	1400	1563	1350	1657	1354	4,515		180	4694
4/30/2015	9.9	34	10.2	45.9	-39.15	95.8	1234	1431	1526	1401	1758	1431	4,518		264	4782

Inlet Gas and Temperature*



*Gas data collected from Laboratory Reports. Temperature data collected from GEM 2000 field readings.

Inlet Carbon Monoxide*

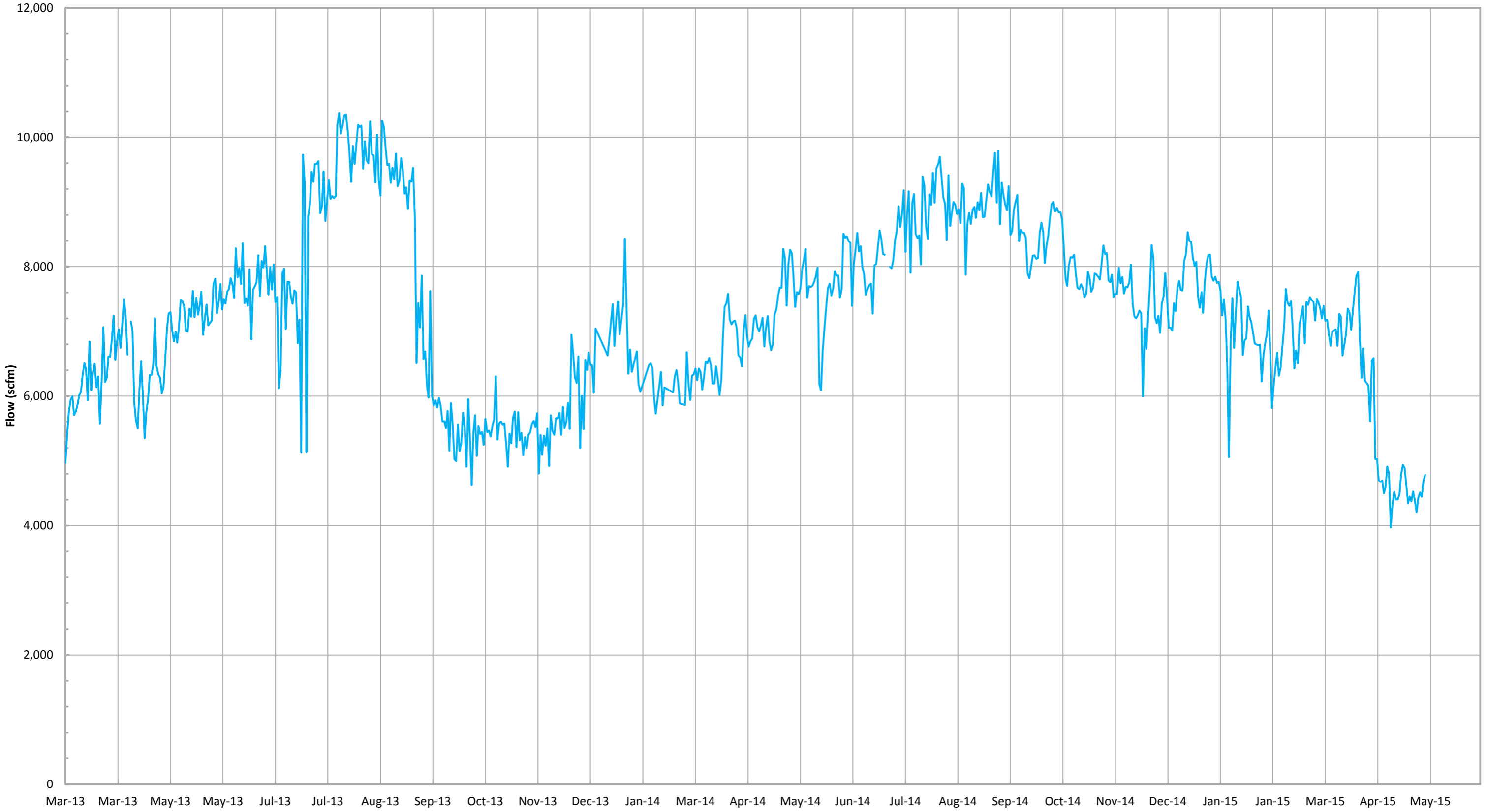


—◆— Inlet Carbon Monoxide*

BRIDGETON LANDFILL

*Data collected from Laboratory Reports.

Total Combined Flow (scfm)*

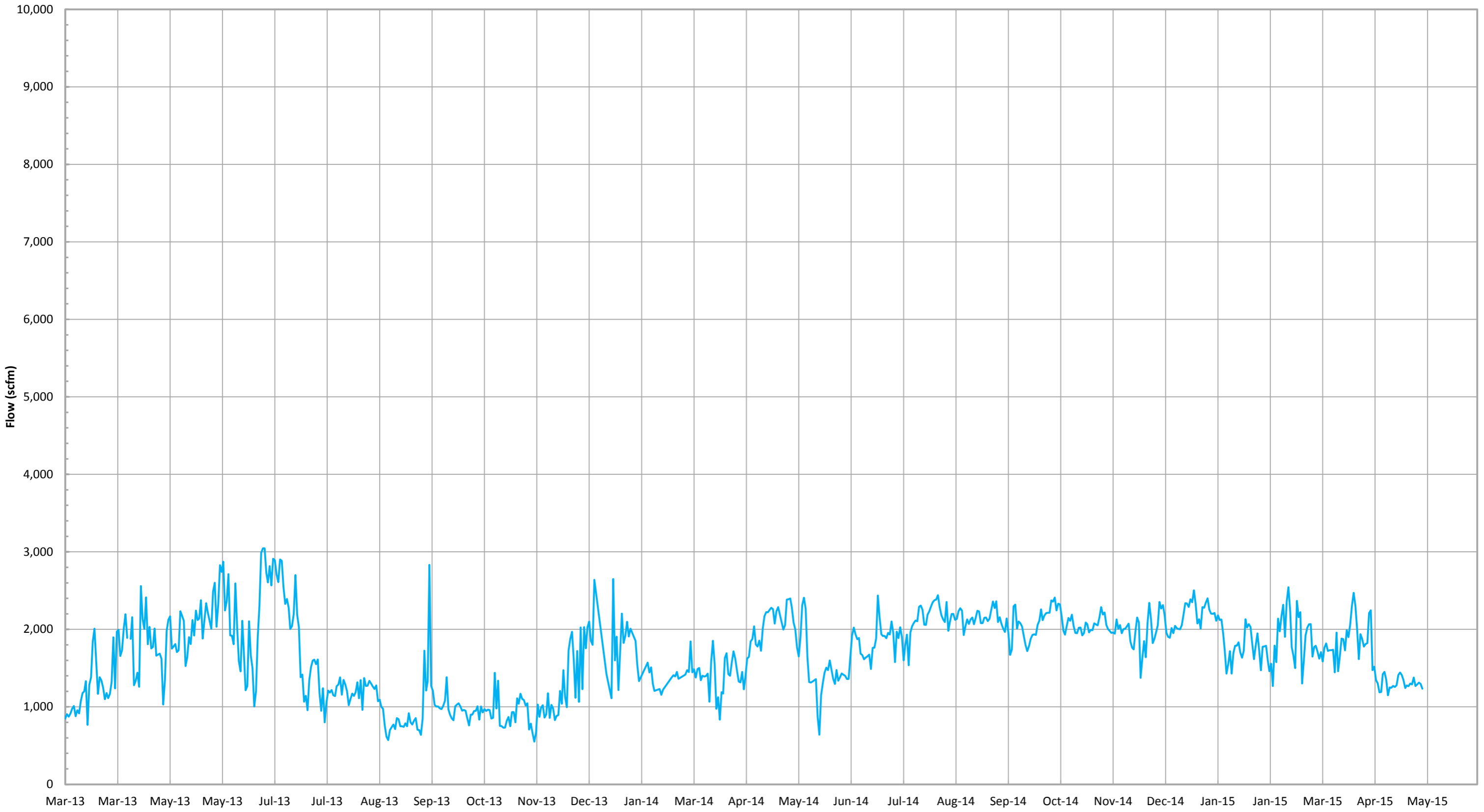


— Total Combined Flow (scfm)*

BRIDGETON LANDFILL

*Combined flow is based on tabulated flow data collected daily from each device.

Candlestick Flare (FL-100) Flow (scfm)*

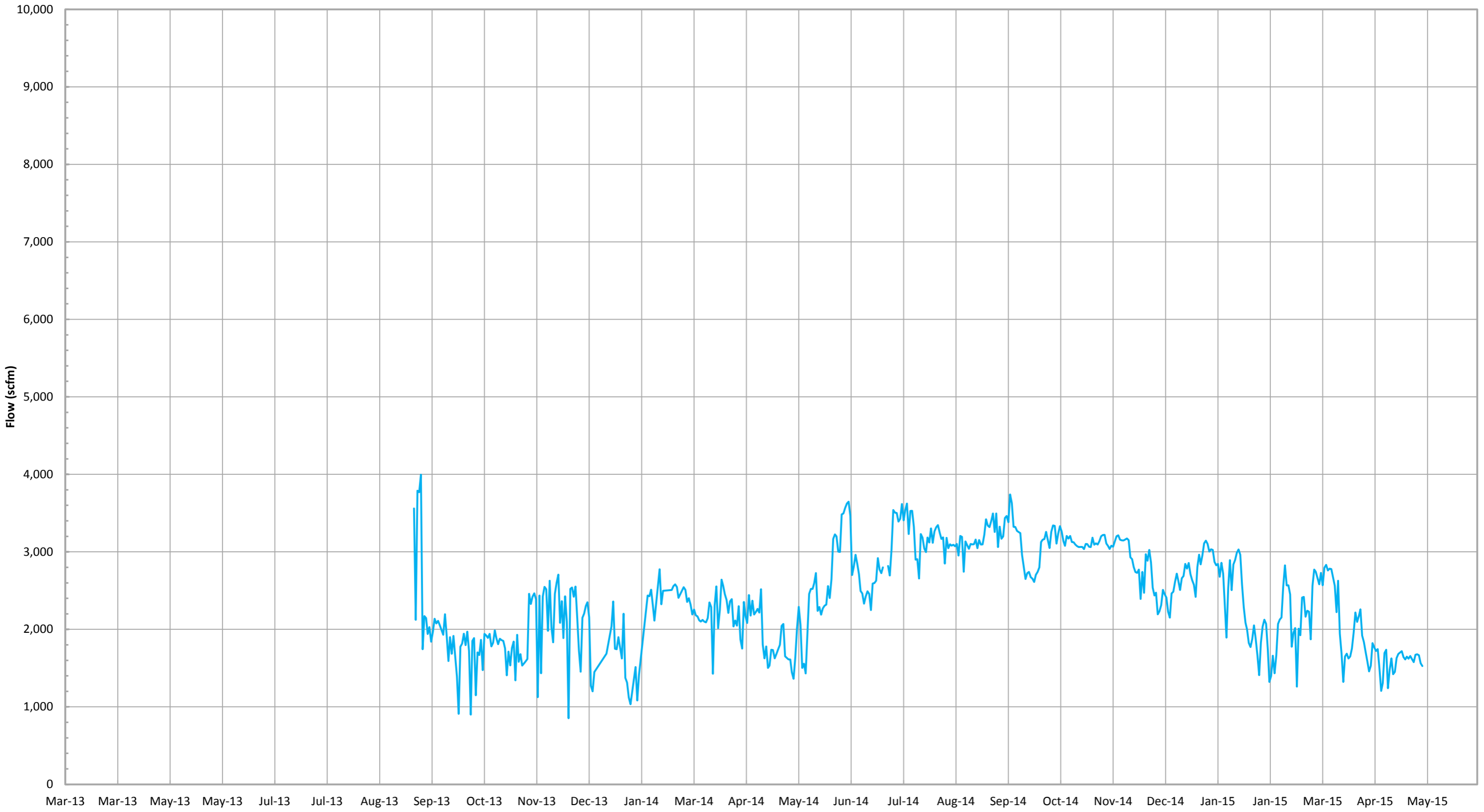


— Candlestick Flare (FL-100) Flow (scfm)*

BRIDGETON LANDFILL

*Flow is based on tabulated flow data collected daily.

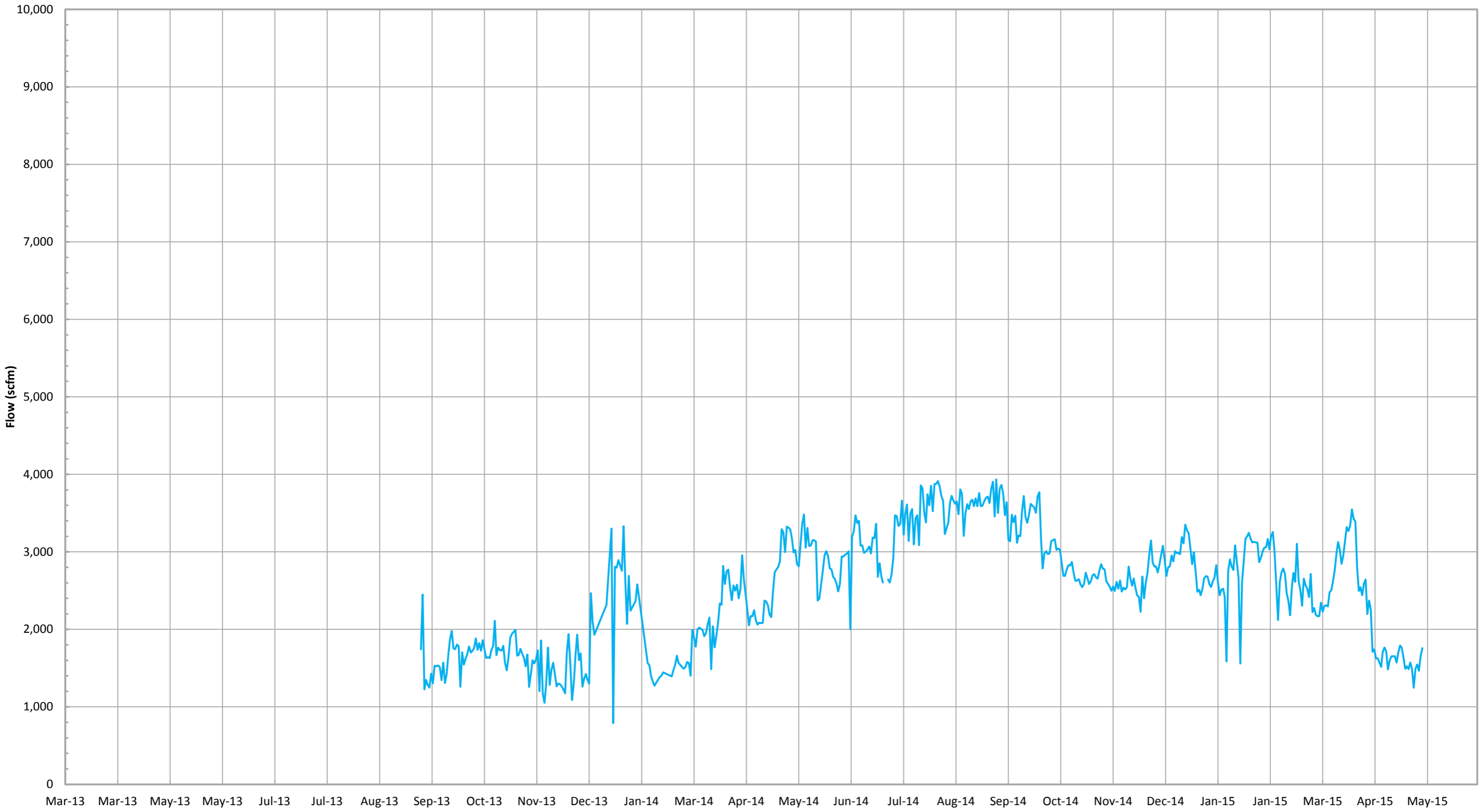
Candlestick Flare (FL-120) Flow (scfm)*



— Candlestick Flare (FL-120) Flow (scfm)*

*Flow is based on tabulated flow data collected daily.

Candlestick Flare (FL-140) Flow (scfm)*

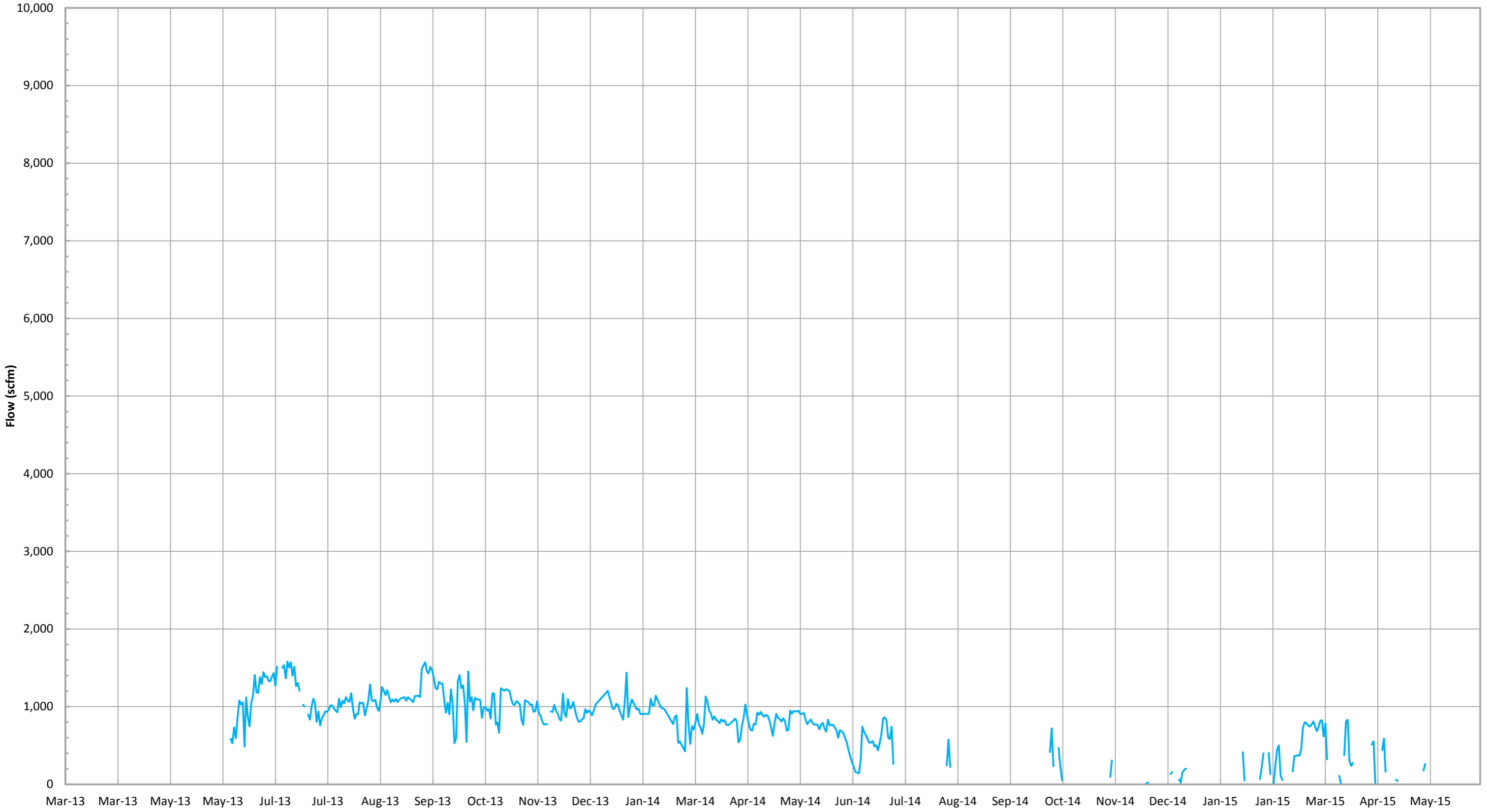


— Candlestick Flare (FL-140) Flow (scfm)*

BRIDGETON LANDFILL

*Flow is based on tabulated flow data collected daily.

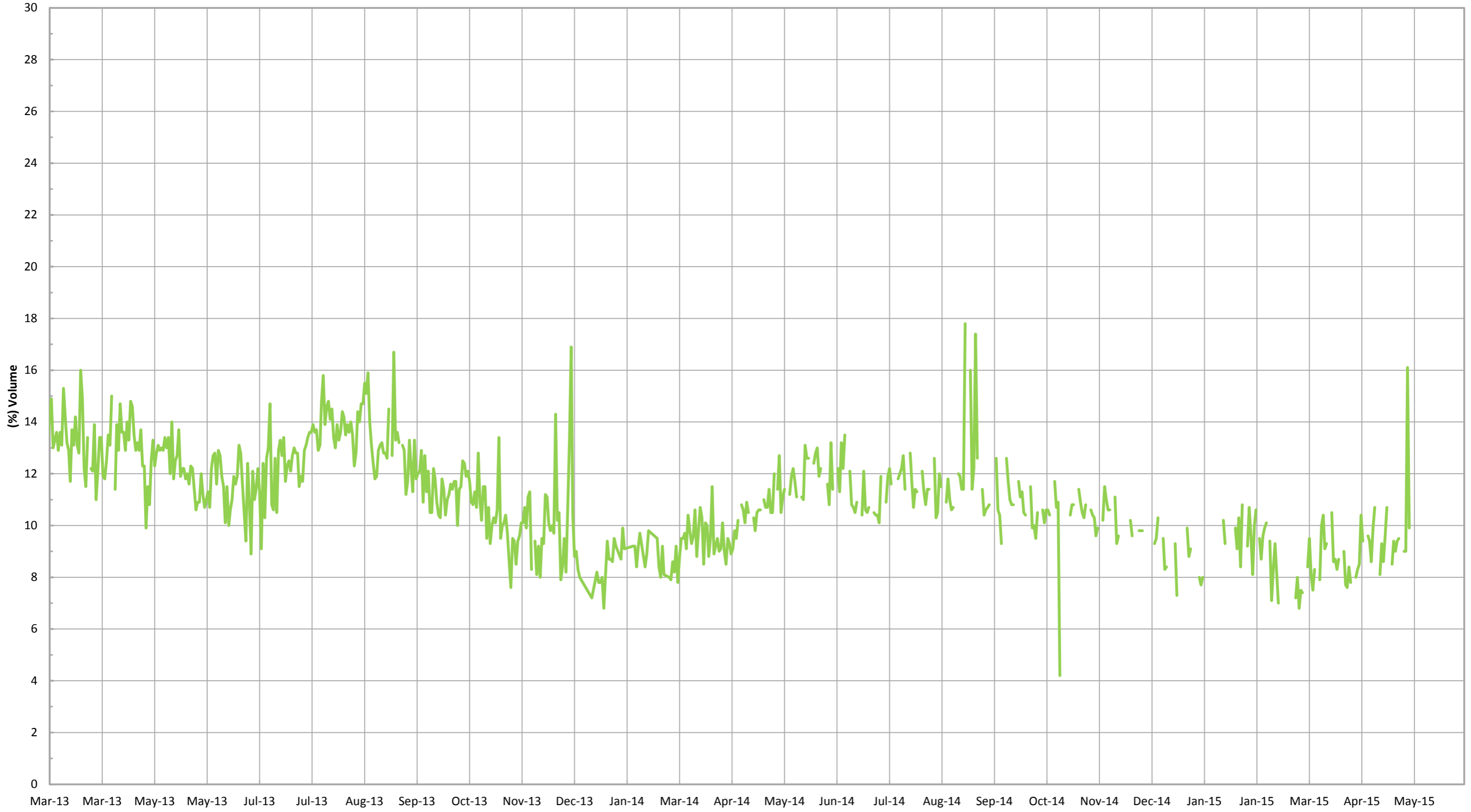
East Auxillary Candlestick Flare Flow (scfm)*



— East Auxillary Candlestick Flare Flow (scfm)*

*Flow is based on tabulated flow data collected daily.

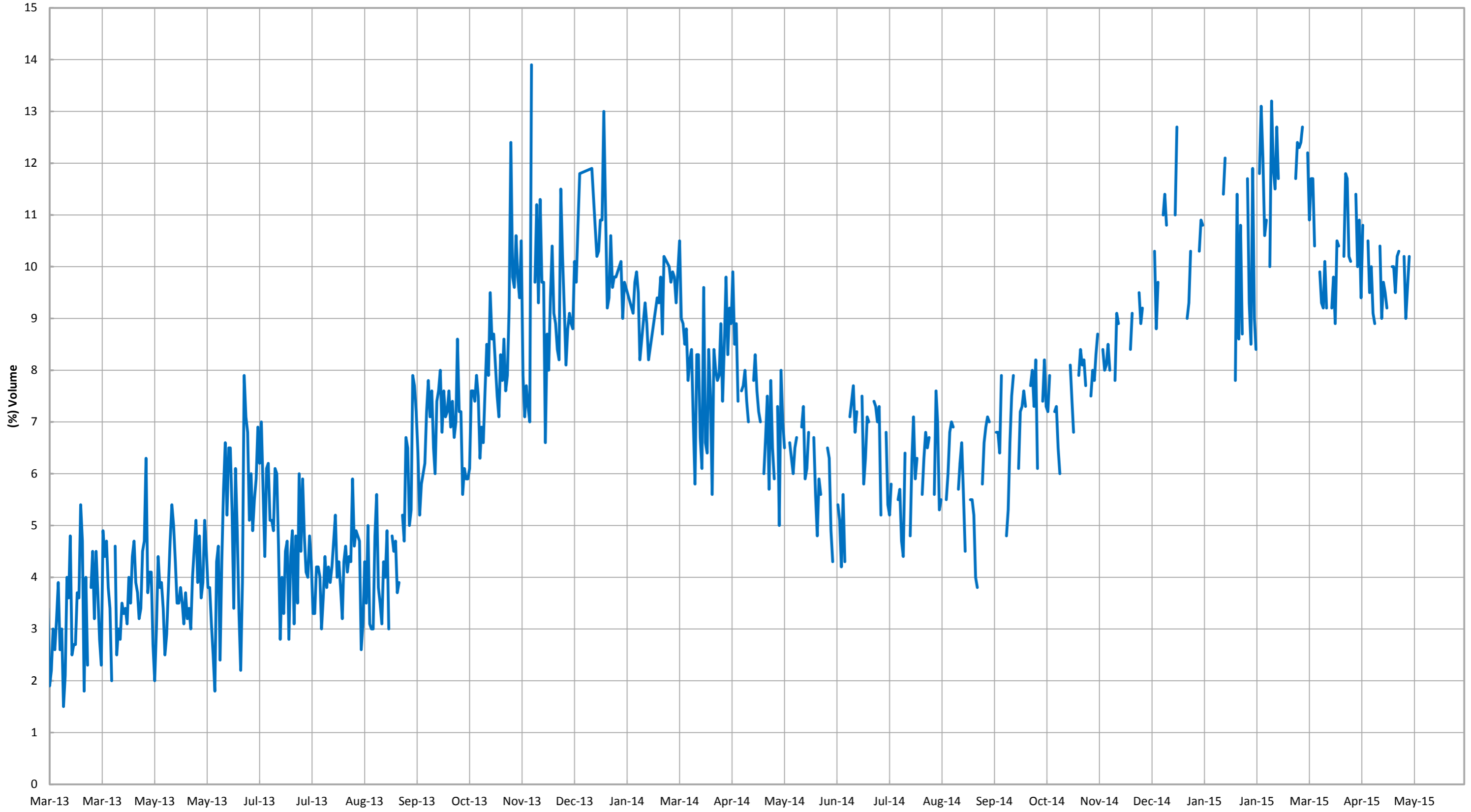
Combined Inlet Methane (GEM 2000)*



— Combined Inlet Methane (GEM 2000)*

*Gas data collected from GEM 2000 field monitoring instrument.

Combined Inlet Oxygen (GEM 2000)*



— Combined Inlet Oxygen (GEM 2000)*

*Gas data collected from GEM 2000 field monitoring instrument.