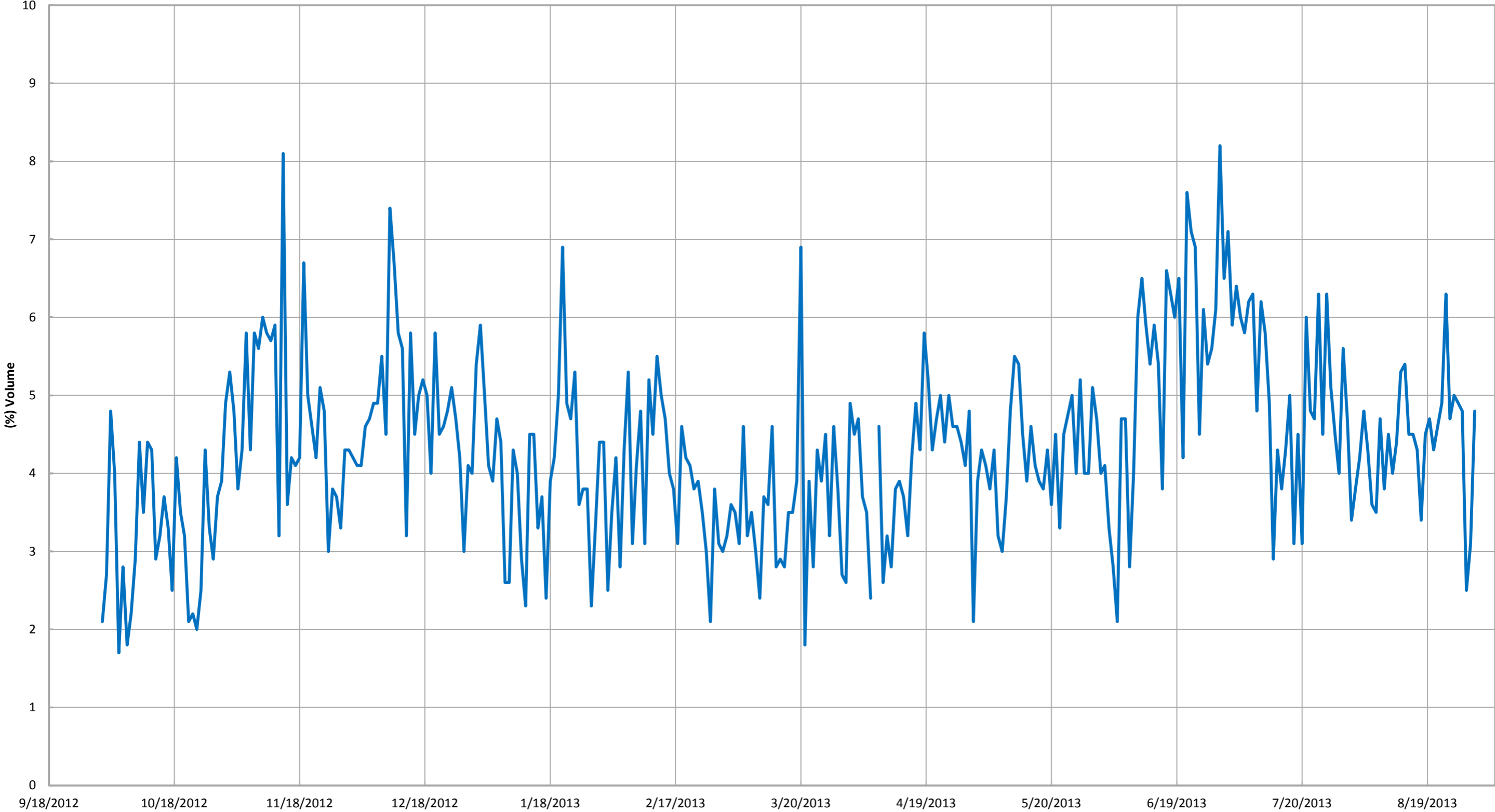


Combined Inlet Oxygen (GEM 2000)*



— Combined Inlet Oxygen (GEM 2000)*

*Gas data collected from GEM 2000 field monitoring

Date	Enclosed Flare											Candlestick Flare								Total Flow scfm			
	CH4	CO2	O2	Bal.	Press./Vac.	Gas Inlet Temp (°F)	Flow (scfm)	Flow Set Point	Enclosed Flare Temp	Callidus Flare Temp	Callidus Flow (scfm)	Total Flow (scfm)	CH4	CO2	O2	Bal.	Press./Vac.	Gas Inlet Temp (°F)	Flow (scfm)		Flare Temp.		
8/15/2013	13.6	53.5	4.5	28.4	-30.6	130	3996		1645	1582	3723	7719	13.9	55	4	27.1	67.7	137	1172	841	0	976	9867
8/16/2013	12.6	51.9	4.5	31	-29	128	4001		1652	1580	3601	7602	13.3	52.8	4.3	29.6	68.6	135	1141	840	0	845	9588
8/17/2013	13.3	56.2	4.3	26.2	-29.2	125	3810		1601	1740	3999	7809	13.6	57.4	3.8	25.2	42.3	133	1190	885	0	903	9902
8/18/2013	14.3	59.4	3.4	22.9	-32.3	126	4004		1608	1622	3970	7974	14.4	59.5	3.2	22.9	69.9	132	1318	904	0	902	10194
8/19/2013	13.8	55.3	4.5	26.4	-29.7	128	4000		1606	1576	3990	7990	14.2	55.7	4.3	25.8	72.6	133	1111	712	0	1055	10156
8/20/2013	13.3	54.8	4.7	27.2	-31.1	129	4080		1582	1587	3711	7791	13.5	55.4	4.6	26.5	69.6	136	1346	667	0	1043	10180
8/21/2013	13.6	58.9	4.3	23.2	-28.7	132	4000		1646	1604	3506	7506	13.9	59.1	4.1	22.9	72.8	138	960	799	0	1048	9514
8/22/2013	13.4	55.5	4.6	26.5	-31	133	4150		1749	1480	3527	7677	13.6	56.5	4.4	25.5	66.7	136	1372	770	0	888	9937
8/23/2013	14	55.1	4.9	26	-31	132	4006		1710	1522	3396	7402	14	58.5	4.3	23.2	66.3	137	1268	617	0	977	9647
8/24/2013	11.5	48.4	6.3	33.8	-33.2	131	4020		1657	893	3222	7242	13.5	55.1	5.9	25.5	60.1	135	1272	790	0	1083	9597
8/25/2013	12.2	55.8	4.7	27.3	-26.5	132	4016		1573	1518	3607	7623	12.3	56.2	4.6	26.9	74	136	1335	741	0	1286	10244
8/26/2013	12.6	54.1	5	28.3	-30.8	132	4061		1481	1550	3295	7356	12.8	54	4.9	28.3	68.8	135	1302	773	0	1080	9738
8/27/2013	14.2	55.5	4.9	25.4	-30.8	132	4137		1655	1558	3248	7385	14.4	55.6	4.8	25.2	67.5	135	1263	857	0	1071	9719
8/28/2013	13.9	50.5	4.8	30.8	-32.8	132	4016		1536	1342	2965	6981	14	50.7	4.7	30.6	62.1	136	1230	726	0	1089	9300
8/29/2013	14.6	58	2.5	24.9	-27.3	140	4036		1687	1591	3739	7775	14.7	59.3	2.6	23.4	66.9	143	1277	891	0	989	10041
8/30/2013	14.1	60.9	3.1	21.9	-30.2	145	4028		1610	1591	3294	7322	14.7	64.9	3.1	17.3	61.4	149	1071	769	0	947	9340
8/31/2013	14.8	51.1	4.8	29.3	-30.5	130	3983		1732	1610	2961	6944	15.5	51.8	4.3	28.4	66.3	137	1093	758	0	1062	9099

Daily Flare Monitoring Data - Bridgeton Landfill
3/1/2013 - 8/31/2013

Date	Device Flow (scfm)				Total Flow (scfm)
	Enclosed Flare	Callidus Flare	Candlestick Flare	E. Aux. Candlestick Flare	
3/1/2013	2,192	1,926	848		4,966
3/2/2013	2,293	2,202	906		5,401
3/3/2013	2,533	2,357	874		5,764
3/4/2013	2,659	2,365	913		5,937
3/5/2013	2,709	2,313	976		5,998
3/6/2013	2,414	2,283	1,012		5,709
3/7/2013	2,542	2,340	879		5,761
3/8/2013	2,526	2,380	957		5,863
3/9/2013	2,711	2,389	915		6,015
3/10/2013	2,726	2,266	1,073		6,065
3/11/2013	3,134	2,027	1,178		6,339
3/12/2013	2,933	2,373	1,202		6,508
3/13/2013	2,873	2,207	1,332		6,412
3/14/2013	3,615	1,549	768		5,932
3/15/2013	3,321	2,237	1,284		6,842
3/16/2013	2,762	1,948	1,381		6,091
3/17/2013	2,690	1,836	1,842		6,368
3/18/2013	2,316	2,171	2,009		6,496
3/19/2013	2,252	2,307	1,578		6,137
3/20/2013	2,883	2,251	1,167		6,301
3/21/2013	2,080	2,106	1,383		5,569
3/22/2013	2,216	2,664	1,339		6,219
3/23/2013	3,474	2,345	1,247		7,066
3/24/2013	2,869	2,248	1,099		6,216
3/25/2013	2,946	2,165	1,177		6,288
3/26/2013	3,255	2,243	1,112		6,610
3/27/2013	3,188	2,249	1,167		6,604
3/28/2013	3,237	2,314	1,322		6,873
3/29/2013	3,055	2,293	1,898		7,246
3/30/2013	2,975	2,349	1,238		6,562
3/31/2013	2,826	2,041	1970		6,837

Daily Flare Monitoring Data - Bridgeton Landfill
3/1/2013 - 8/31/2013

Date	Device Flow (scfm)				Total Flow (scfm)
	Enclosed Flare	Callidus Flare	Candlestick Flare	E. Aux. Candlestick Flare	
4/1/2013	2,755	2,284	1,994		7,033
4/2/2013	2,982	2,109	1,655		6,746
4/3/2013	3,138	2,246	1,728		7,112
4/4/2013	3,320	2,173	2,008		7,501
4/5/2013	3,001	2,034	2,196		7,231
4/6/2013	2,976	1,776	1,889		6,641
4/7/2013					
4/8/2013	3,122	2,154	1,877		7,153
4/9/2013	2,849	2,001	2,156		7,006
4/10/2013	3,001	1,614	1,279		5,894
4/11/2013	2,719	1,561	1,335		5,615
4/12/2013	2,645	1,417	1,441		5,503
4/13/2013	3,344	1,504	1,259		6,107
4/14/2013	2,369	1,617	2,558		6,544
4/15/2013	2,225	1,654	2,135		6,014
4/16/2013	1,874	1,472	2,005		5,351
4/17/2013	1,889	1,454	2,413		5,756
4/18/2013	2,536	1,610	1,808		5,954
4/19/2013	2,741	1,558	2,032		6,331
4/20/2013	2,963	1,613	1,753		6,329
4/21/2013	3,109	1,614	1,773		6,496
4/22/2013	3,630	1,564	2,011		7,205
4/23/2013	3,202	1,600	1,660		6,462
4/24/2013	3,049	1,610	1,675		6,334
4/25/2013	3,014	1,585	1,687		6,286
4/26/2013	2,832	1,590	1,620		6,042
4/27/2013	3,526	1,590	1,029		6,145
4/28/2013	3,628	1,615	1,345		6,588
4/29/2013	3,506	1,562	1,982		7,050
4/30/2013	3,550	1,604	2,124		7,278

Daily Flare Monitoring Data - Bridgeton Landfill
3/1/2013 - 8/31/2013

Date	Device Flow (scfm)				Total Flow (scfm)
	Enclosed Flare	Callidus Flare	Candlestick Flare	E. Aux. Candlestick Flare	
5/1/2013	1,693	1,516	2,168		5,377
5/2/2013	1,562	1,583	1,752		4,897
5/3/2013	1,697	1,620	1,779		5,096
5/4/2013	1,540	1,606	1,810		4,956
5/5/2013	1,740	1,548	1,707		4,995
5/6/2013	1,755	1,603	1,730		5,088
5/7/2013	1,720	1,687	2,235		5,642
5/8/2013	1,656	1,620	2,176		5,452
5/9/2013	1,611	1,374	2,110		5,095
5/10/2013	1,648	1,582	1,527		4,757
5/11/2013	1,663	1,546	1,642		4,851
5/12/2013	1,621	1,607	1,900		5,128
5/13/2013	1,643	1,564	1,810		5,017
5/14/2013	1,626	1,611	2,121		5,358
5/15/2013	1,640	1,598	1,920		5,158
5/16/2013	1,654	1,404	2,242		5,300
5/17/2013	1,648	1,582	2,121		5,351
5/18/2013	1,639	1,560	2,141		5,340
5/19/2013	1,666	1,595	2,375		5,636
5/20/2013	1,667	1,605	1,881		5,153
5/21/2013	1,649	1,596	2,112		5,357
5/22/2013	1,629	1,574	2,337		5,540
5/23/2013	1,662	1,577	2,214		5,453
5/24/2013	1,658	1,477	1,873		5,008
5/25/2013	1,673	1,539	2,007		5,219
5/26/2013	1,669	1,519	2,488		5,676
5/27/2013	1,676	1,510	2,601		5,787
5/28/2013	1,651	1,612	2,034		5,297
5/29/2013	1,614	1,610	2,321		5,545
5/30/2013	1,670	1,601	2,828		6,099
5/31/2013	1,591	1,596	2,741		5,928

Daily Flare Monitoring Data - Bridgeton Landfill
3/1/2013 - 8/31/2013

Date	Device Flow (scfm)				Total Flow (scfm)
	Enclosed Flare	Callidus Flare	Candlestick Flare	E. Aux. Candlestick Flare	
6/1/2013	3,161	1,467	2,873		7,501
6/2/2013	3,642	1,544	2,245		7,431
6/3/2013	3,664	1,581	2,364		7,609
6/4/2013	3,451	1,490	2,713		7,654
6/5/2013	3,722	1,591	1,922	586	7,821
6/6/2013	3,696	1,592	1,918	529	7,735
6/7/2013	3,405	1,571	1,809	734	7,519
6/8/2013	3,544	1,553	2,592	596	8,285
6/9/2013	3,352	1,581	2,038	864	7,835
6/10/2013	3,691	1,623	1,589	1,079	7,982
6/11/2013	3,665	1,580	1,457	1,028	7,730
6/12/2013	3,651	1,546	2,110	1,056	8,363
6/13/2013	3,698	1,596	1,653	488	7,435
6/14/2013	3,558	1,620	1,214	1,119	7,511
6/15/2013	3,691	1,562	1,269	872	7,394
6/16/2013	3,502	1,608	2,105	745	7,960
6/17/2013	2,604	1,558	1,664	1,051	6,877
6/18/2013	3,401	1,605	1,496	1,141	7,643
6/19/2013	3,691	1,587	1,004	1,409	7,691
6/20/2013	3,769	1,608	1,196	1,184	7,757
6/21/2013	3,519	1,588	1,891	1,177	8,175
6/22/2013	3,864		2,301	1,380	7,545
6/23/2013	3,809		2,987	1,293	8,089
6/24/2013	3,497		3,046	1,443	7,986
6/25/2013	3,889		3,046	1,382	8,317
6/26/2013	3,803		2,725	1,391	7,919
6/27/2013	3,629		2,605	1,334	7,568
6/28/2013	3,853		2,817	1,326	7,996
6/29/2013	3,694		2,566	1,386	7,646
6/30/2013	3,694		2,911	1,432	8,037

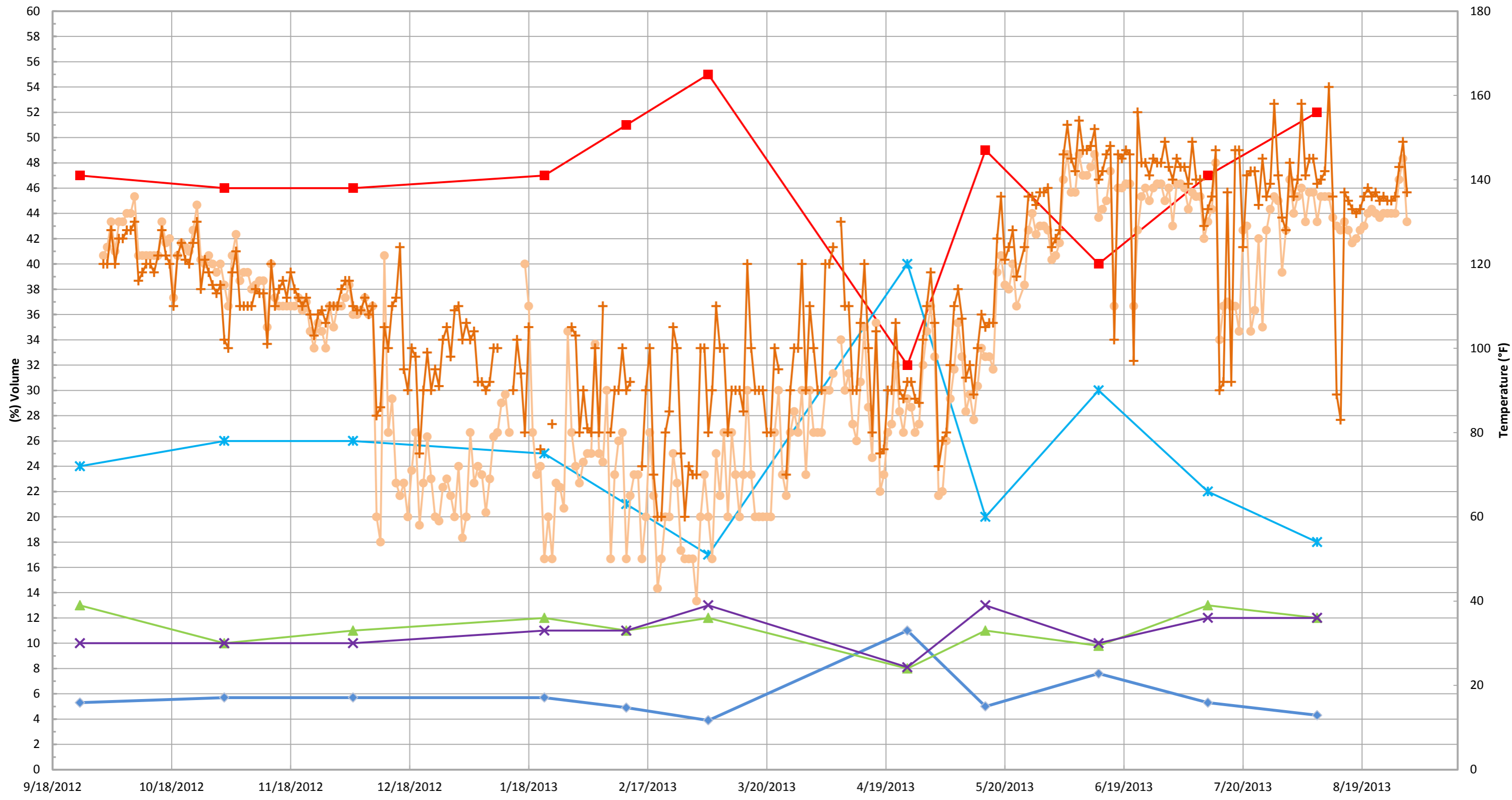
Daily Flare Monitoring Data - Bridgeton Landfill
3/1/2013 - 8/31/2013

Date	Device Flow (scfm)				Total Flow (scfm)
	Enclosed Flare	Callidus Flare	Candlestick Flare	E. Aux. Candlestick Flare	
7/1/2013	3,294		2,891	1,271	7,456
7/2/2013	3,309		2,708	1,514	7,531
7/3/2013	3,510		2,610		6,120
7/4/2013	3,496		2,901		6,397
7/5/2013	3,514		2,884	1,501	7,899
7/6/2013	3,891		2,544	1,535	7,970
7/7/2013	3,346		2,328	1,364	7,038
7/8/2013	3,796		2,392	1,580	7,768
7/9/2013	3,981		2,279	1,504	7,764
7/10/2013	3,960		2,004	1,570	7,534
7/11/2013	3,987		2,041	1,398	7,426
7/12/2013	3,921		2,195	1,516	7,632
7/13/2013	3,635		2,701	1,265	7,601
7/14/2013	3,325		2,188	1,305	6,818
7/15/2013	3,954		2,027	1,204	7,185
7/16/2013	3,740		1,383		5,123
7/17/2013	3,988	3,303	1,416	1,023	9,730
7/18/2013	3,986	3,255	1,066	1,003	9,310
7/19/2013	3,987		1,142		5,129
7/20/2013	3,988	2,929	957	900	8,774
7/21/2013	3,988	2,801	1,343	833	8,965
7/22/2013	3,988	2,960	1,512	1,007	9,467
7/23/2013	3,987	2,625	1,597	1,102	9,311
7/24/2013	3,990	2,942	1,609	1,047	9,588
7/25/2013	3,989	3,241	1,551	805	9,586
7/26/2013	3,991	3,092	1,612	936	9,631
7/27/2013	3,992	2,898	1,177	759	8,826
7/28/2013	3,994	3,141	949	846	8,930
7/29/2013	3,995	3,341	1,241	894	9,471
7/30/2013	3,981	2,984	801	939	8,705
7/31/2013	3,993	3,033	1,052	935	9,013

Daily Flare Monitoring Data - Bridgeton Landfill
3/1/2013 - 8/31/2013

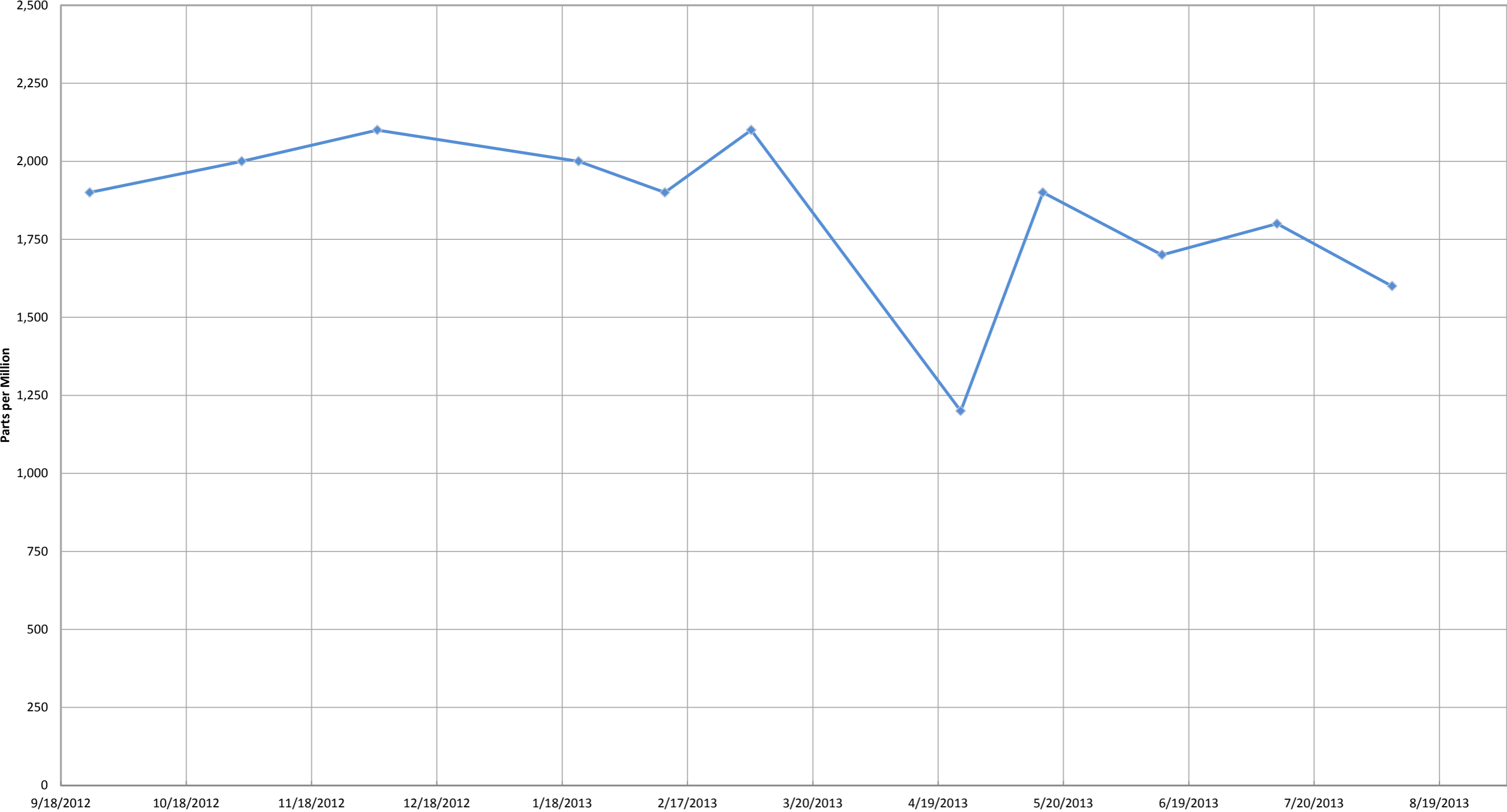
Date	Device Flow (scfm)				Total Flow (scfm)
	Enclosed Flare	Callidus Flare	Candlestick Flare	E. Aux. Candlestick Flare	
8/1/2013	3,992	3,180	1,210	962	9,344
8/2/2013	3,996	2,850	1,184	1,017	9,047
8/3/2013	3,991	2,869	1,218	1,014	9,092
8/4/2013	3,990	2,946	1,148	975	9,059
8/5/2013	3,998	3,011	1,138	946	9,093
8/6/2013	3,993	3,999	1,266	928	10,186
8/7/2013	3,991	3,999	1,286	1,103	10,379
8/8/2013	3,993	3,691	1,381	990	10,055
8/9/2013	3,991	3,951	1,158	1,074	10,174
8/10/2013	3,991	3,957	1,348	1,043	10,339
8/11/2013	3,984	3,960	1,288	1,122	10,354
8/12/2013	3,991	3,833	1,201	1,080	10,105
8/13/2013	4,003	3,661	1,022	1,061	9,747
8/14/2013	3,997	3,038	1,101	1,174	9,310
8/15/2013	3,996	3,723	1,172	976	9,867
8/16/2013	4,001	3,601	1,141	845	9,588
8/17/2013	3,810	3,999	1,190	903	9,902
8/18/2013	4,004	3,970	1,318	902	10,194
8/19/2013	4,000	3,990	1,111	1,055	10,156
8/20/2013	4,080	3,711	1,346	1,043	10,180
8/21/2013	4,000	3,506	960	1,048	9,514
8/22/2013	4,150	3,527	1,372	888	9,937
8/23/2013	4,006	3,396	1,268	977	9,647
8/24/2013	4,020	3,222	1,272	1,083	9,597
8/25/2013	4,016	3,607	1,335	1,286	10,244
8/26/2013	4,061	3,295	1,302	1,080	9,738
8/27/2013	4,137	3,248	1,263	1,071	9,719
8/28/2013	4,016	2,965	1,230	1,089	9,300
8/29/2013	4,036	3,739	1,277	989	10,041
8/30/2013	4,028	3,294	1,071	947	9,340
8/31/2013	3,983	2,961	1,093	1,062	9,099

Inlet Gas and Temperature*



*Gas data collected from Laboratory Reports. Temperature data collected from GEM 2000 field readings.

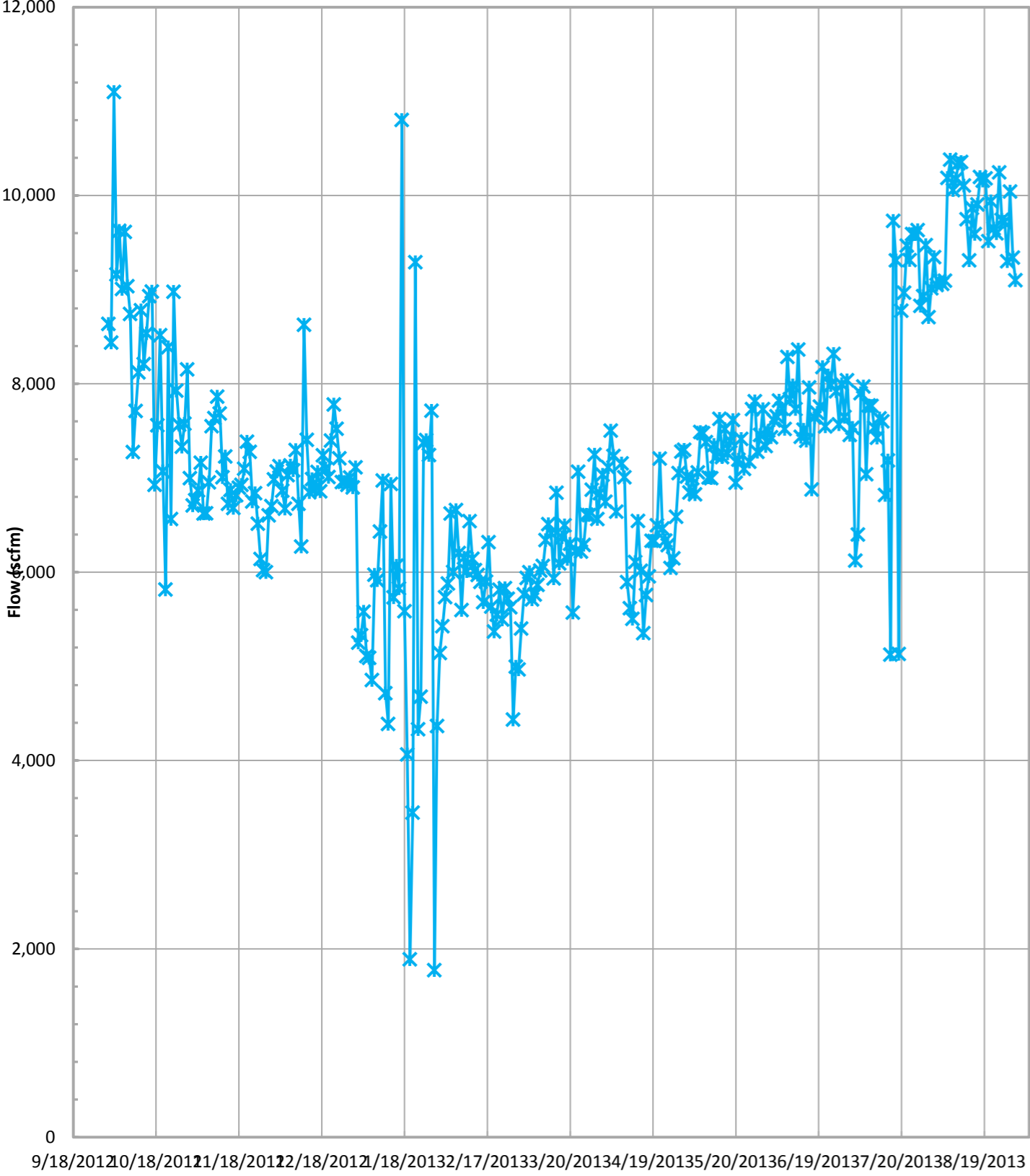
Inlet Carbon Monoxide*



—◆— Inlet Carbon Monoxide*

*Data collected from Laboratory Reports.

Total Combined Flow (scfm)*

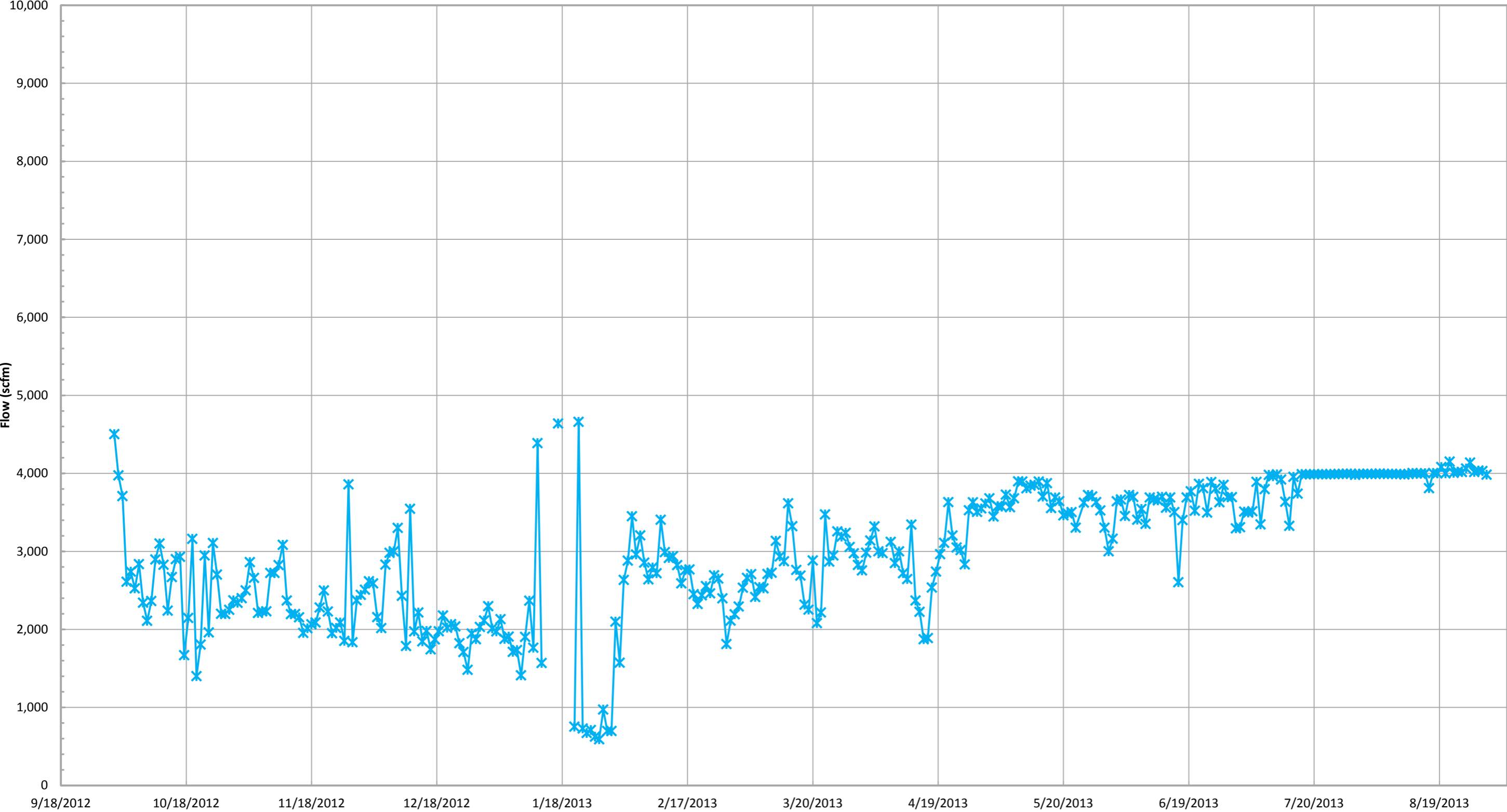


—x— Total Combined Flow (scfm)*

*Combined flow is based on



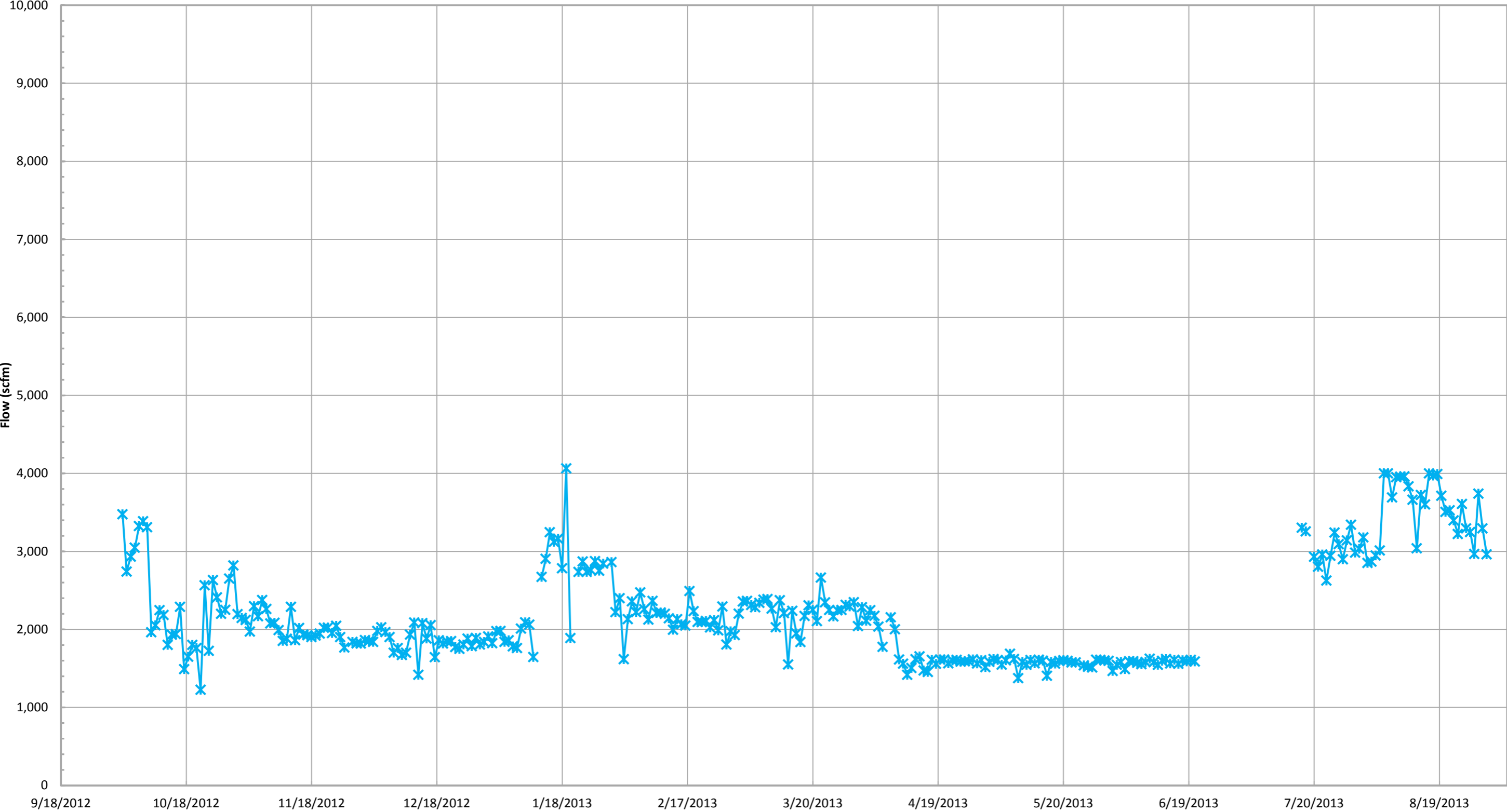
Enclosed Flare Flow (scfm)*



—x— Enclosed Flare Flow (scfm)*

*Flow is based on tabulated flow data collected daily.

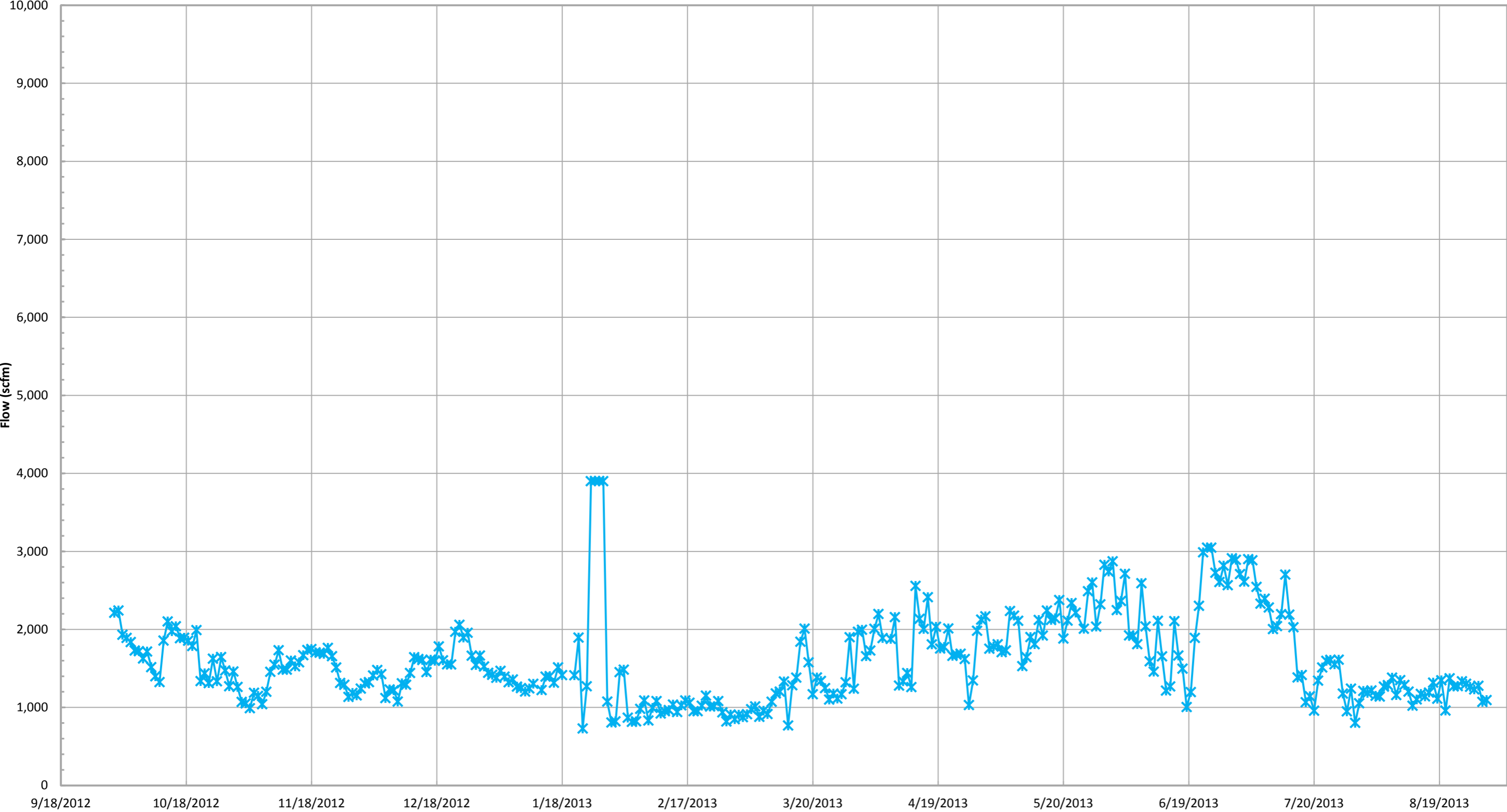
Callidus Flare Flow (scfm)*



—*— Callidus Flare Flow (scfm)*

*Flow is based on tabulated flow data collected daily.

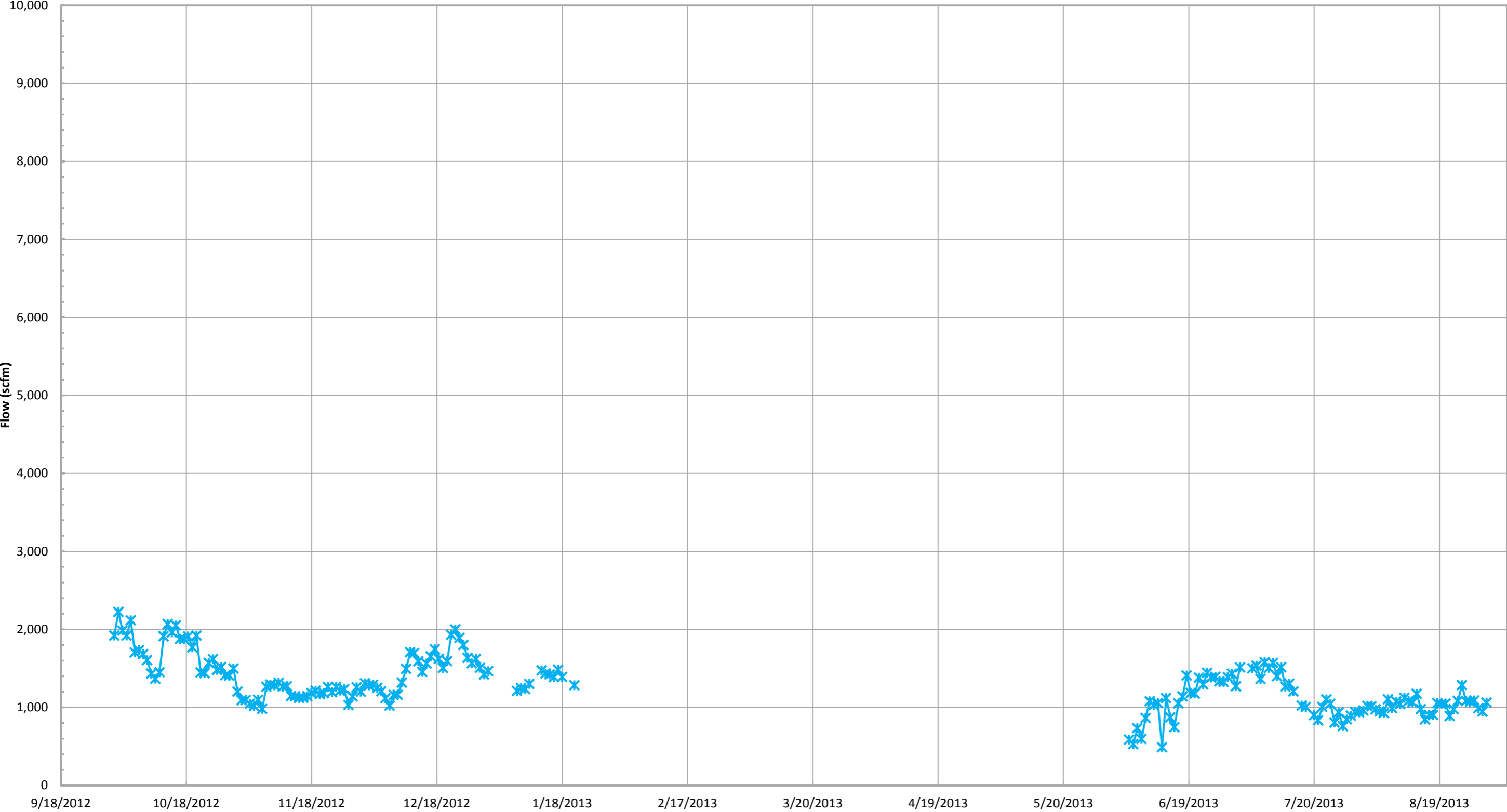
Candlestick Flare Flow (scfm)*



—*— Candlestick Flare Flow (scfm)*

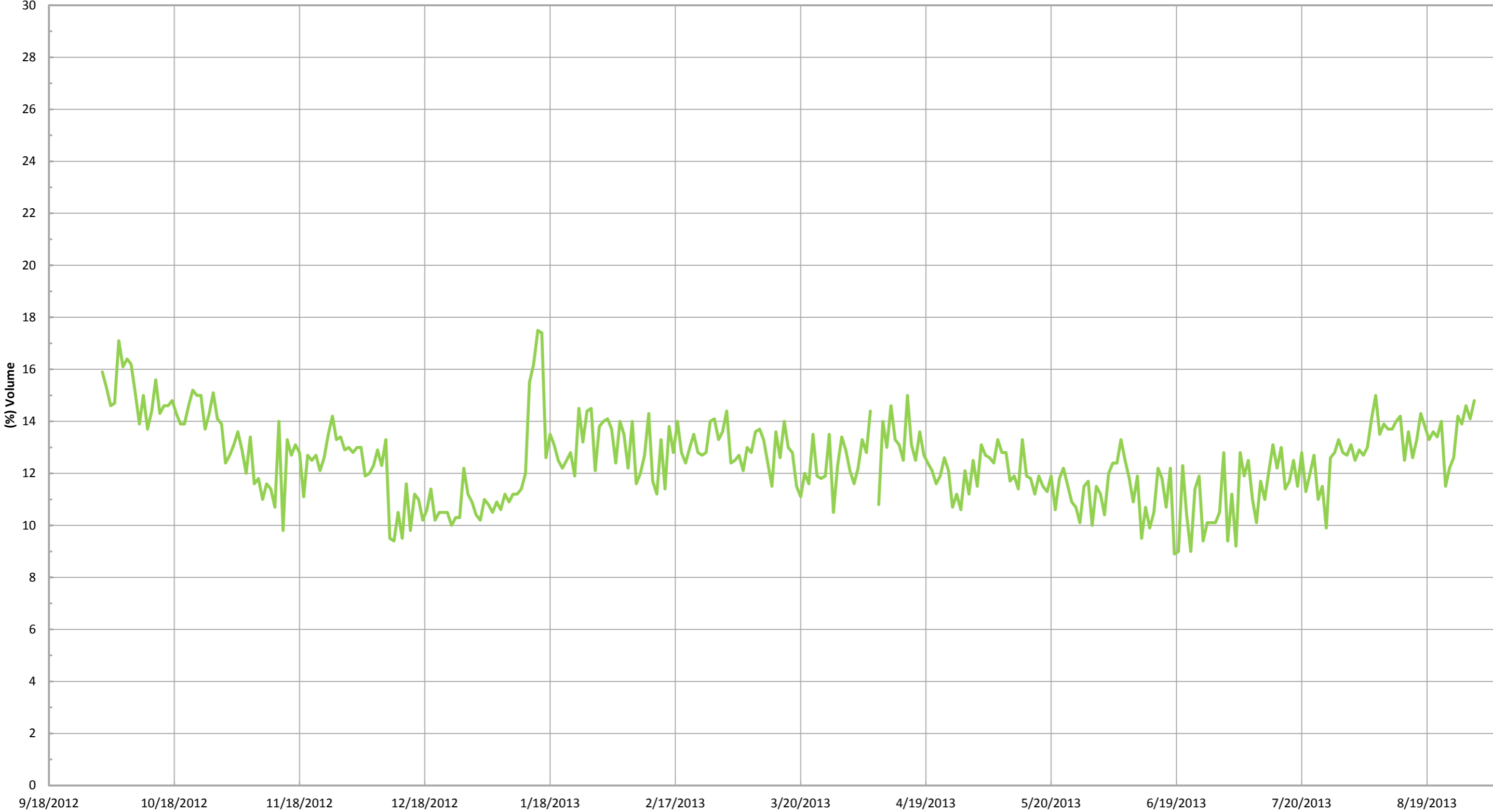
*Flow is based on tabulated flow data collected daily.

East Auxillary Candlestick Flare Flow (scfm)*



*Flow is based on tabulated flow data collected daily.

Combined Inlet Methane (GEM 2000)*



— Combined Inlet Methane (GEM 2000)*

*Gas data collected from GEM 2000 field monitoring