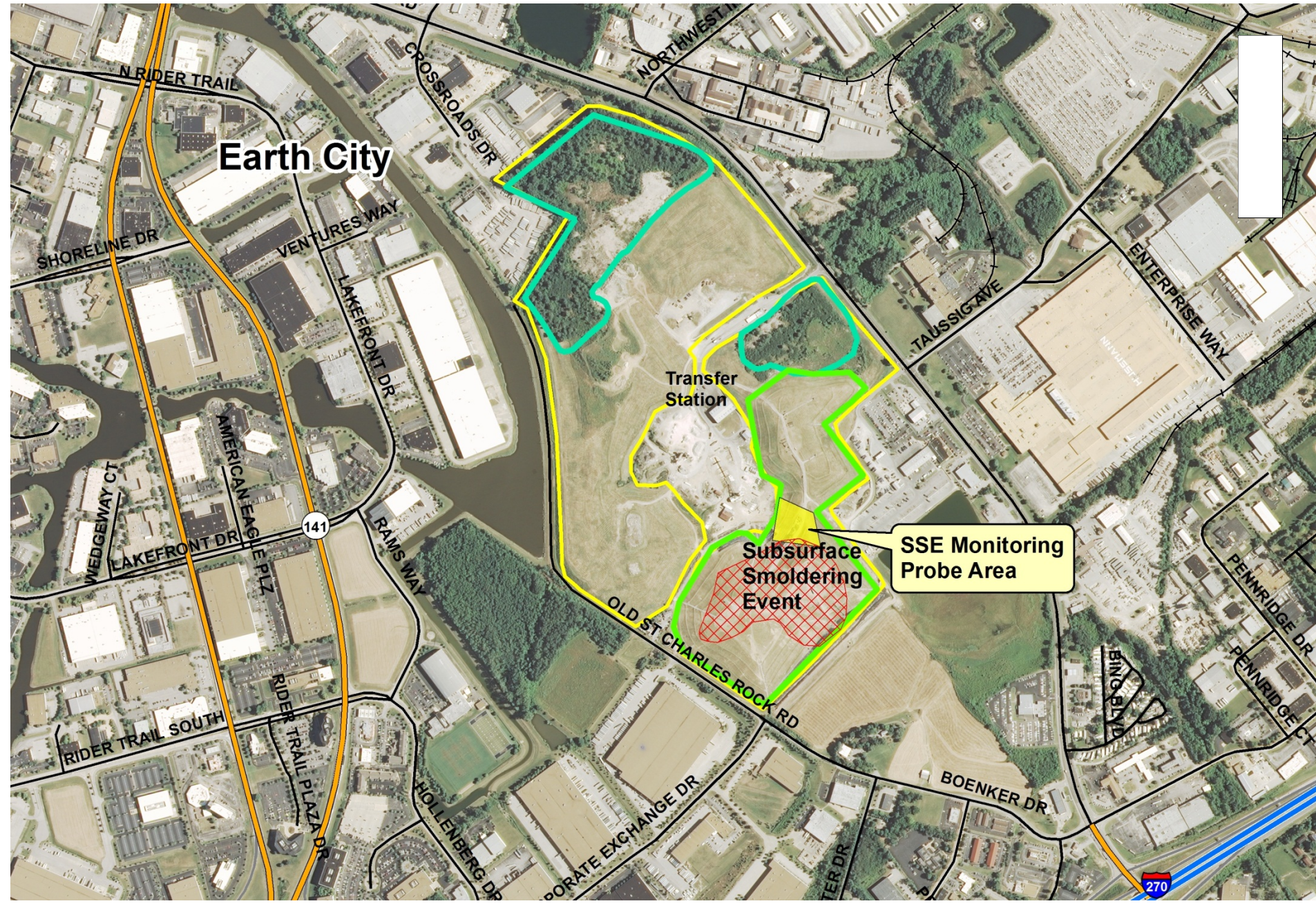


Bridgeton Sanitary Landfill  
June 25, 2013  
Posters for US EPA Meeting

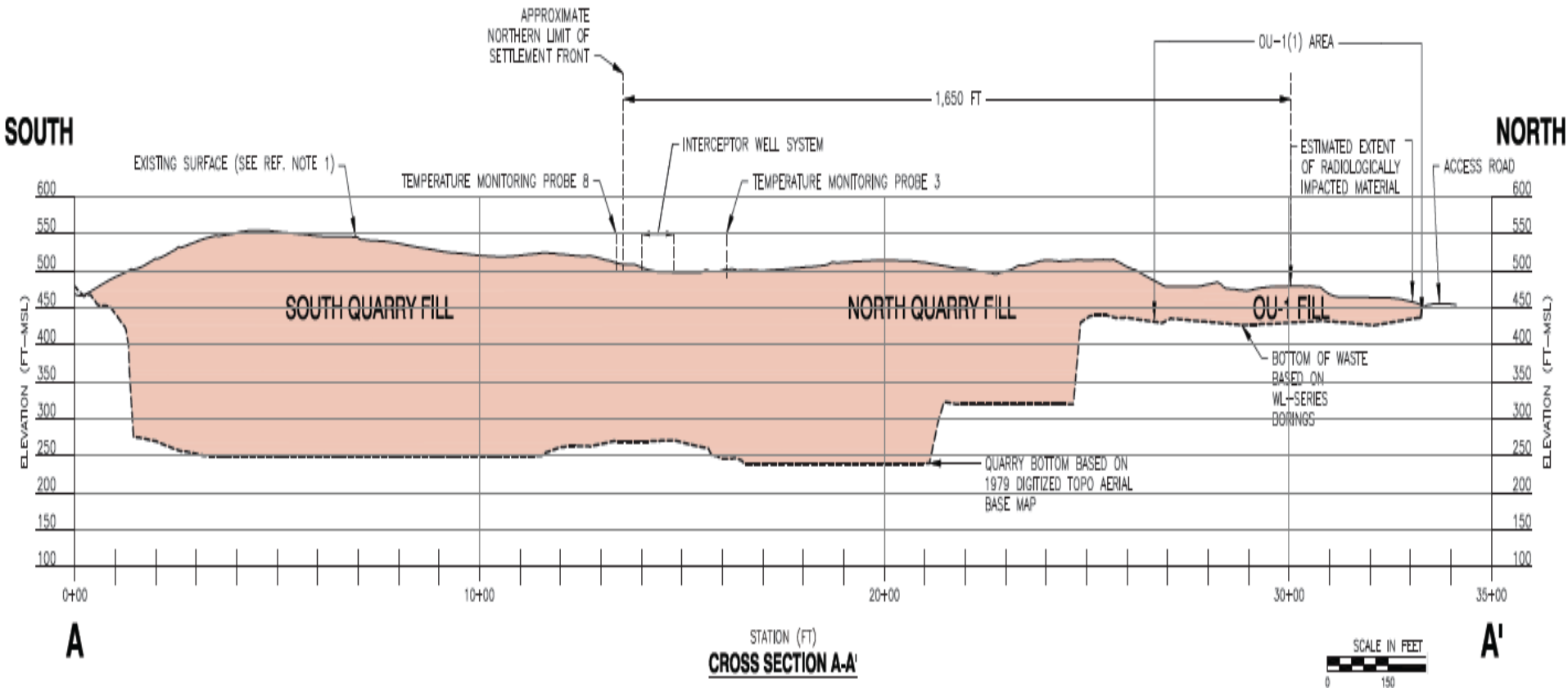


# Where is the Subsurface Smoldering Event?





# How Deep is the Landfill?



# What's Happening at the Landfill Surface?



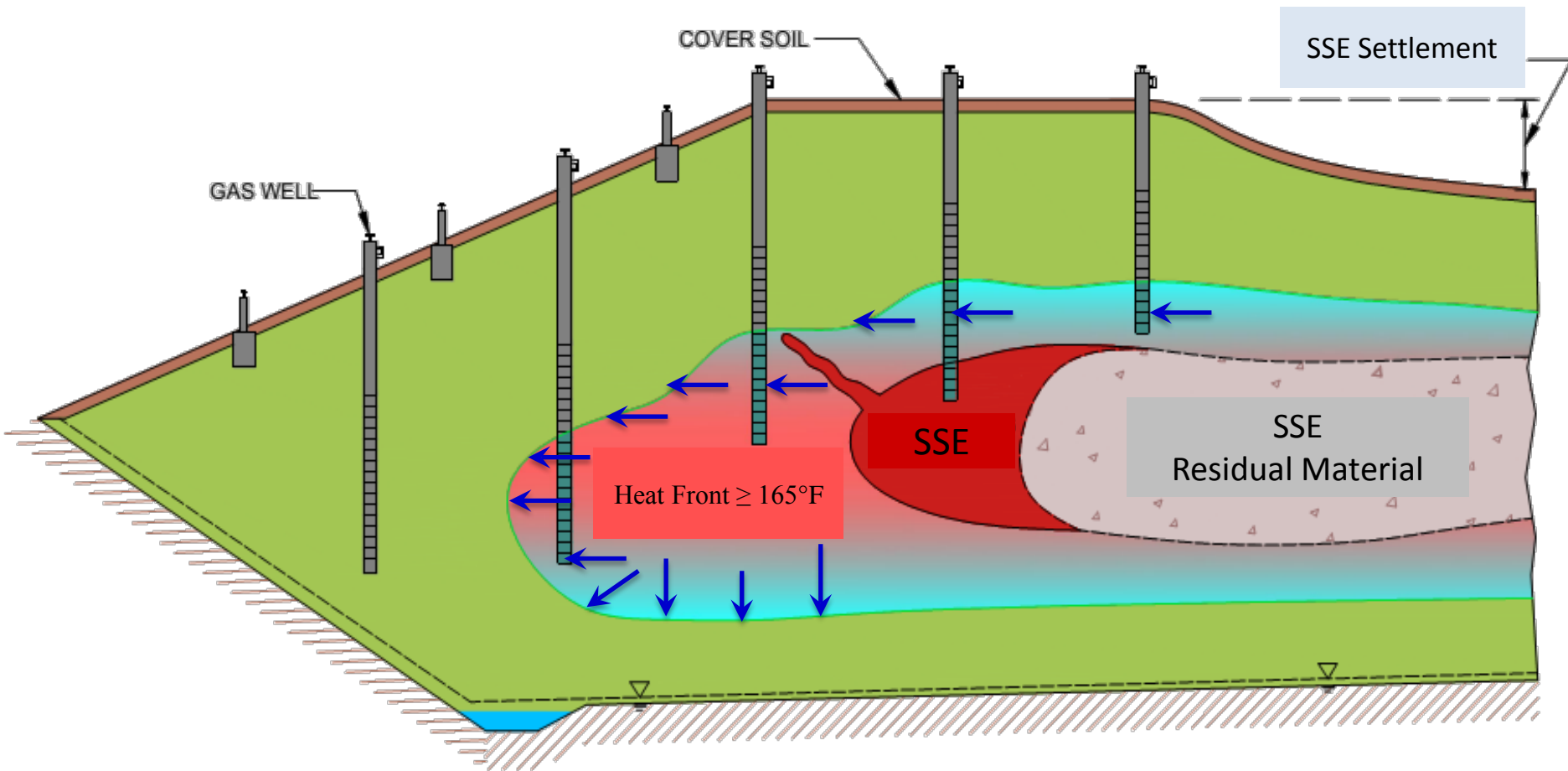
01.25.2012



# What's Happening at the Landfill's Surface?



# Diagram of a Subsurface Smoldering Event



## Smoldering and Heating Events

This is a depiction of the general conditions associated with a subsurface smoldering event.

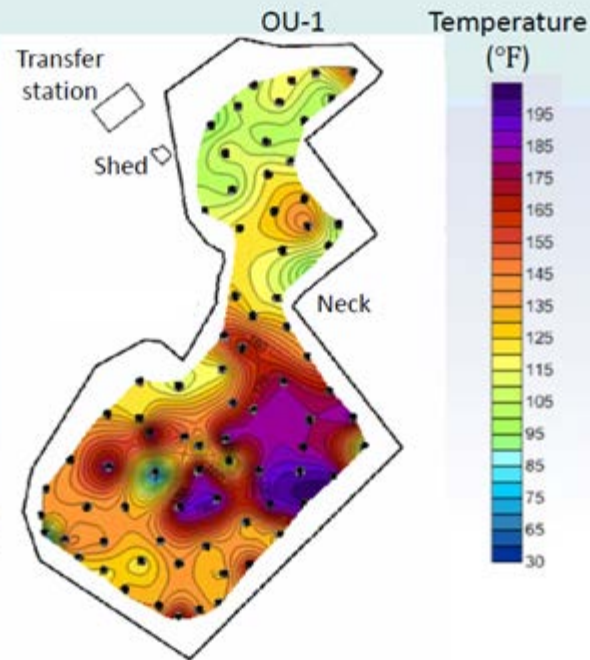
- Heat Front:  $T > 165^{\circ}\text{F}$
- SSO Front:  $T > 200^{\circ}\text{F}$



# How has the Heat Front Moved in Recent Months?

Location of Heat Front – North Quarry

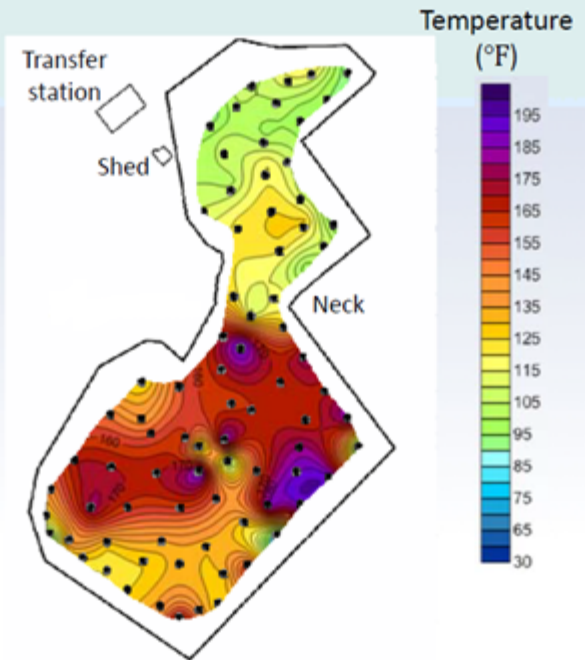
January 2013



illinois.edu

Location of Heat Front – North Quarry

April 2013

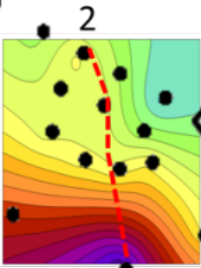


illinois.edu

# Where is the Smoldering Event?

GROUND VIEW

North Quarry

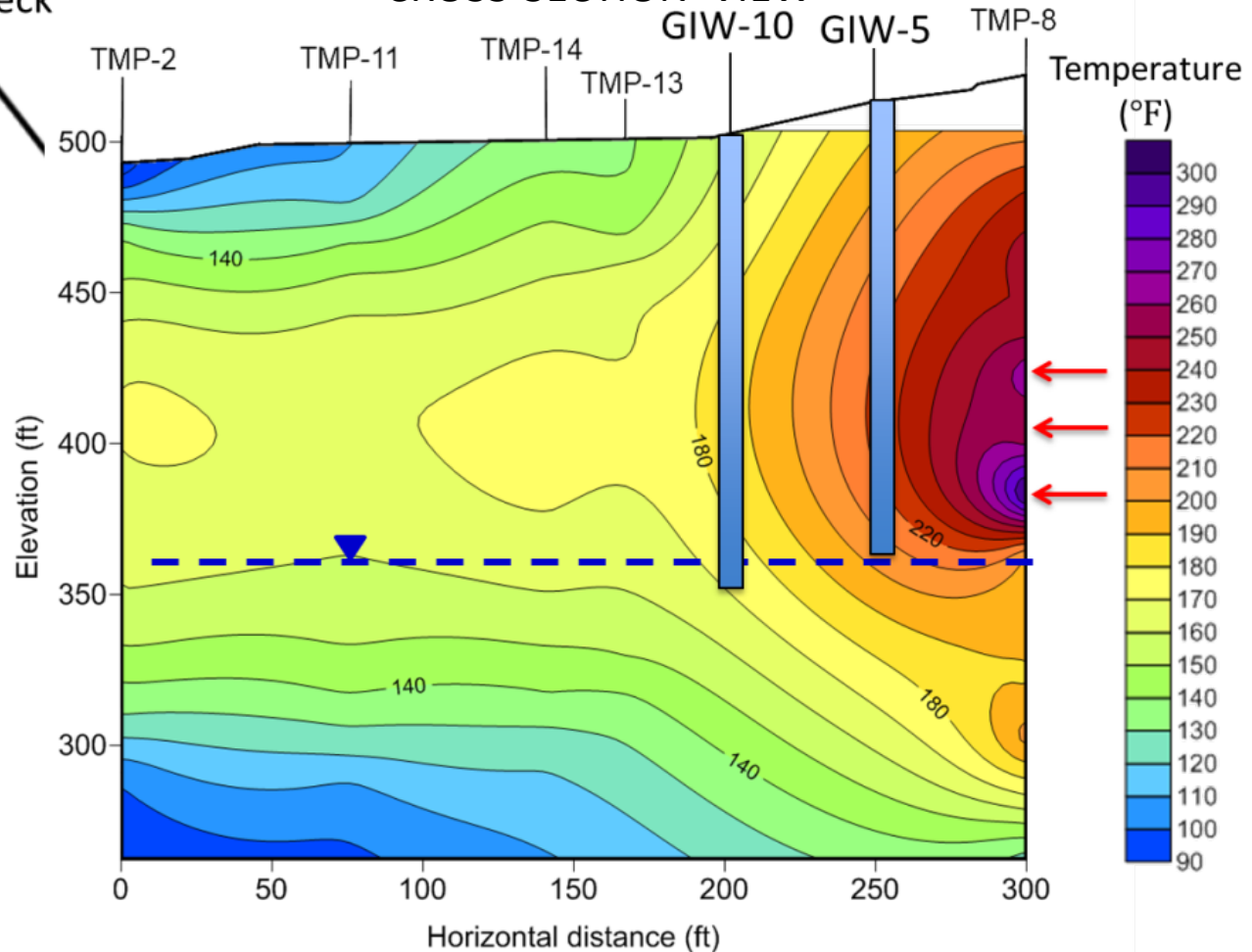


Neck

South Quarry

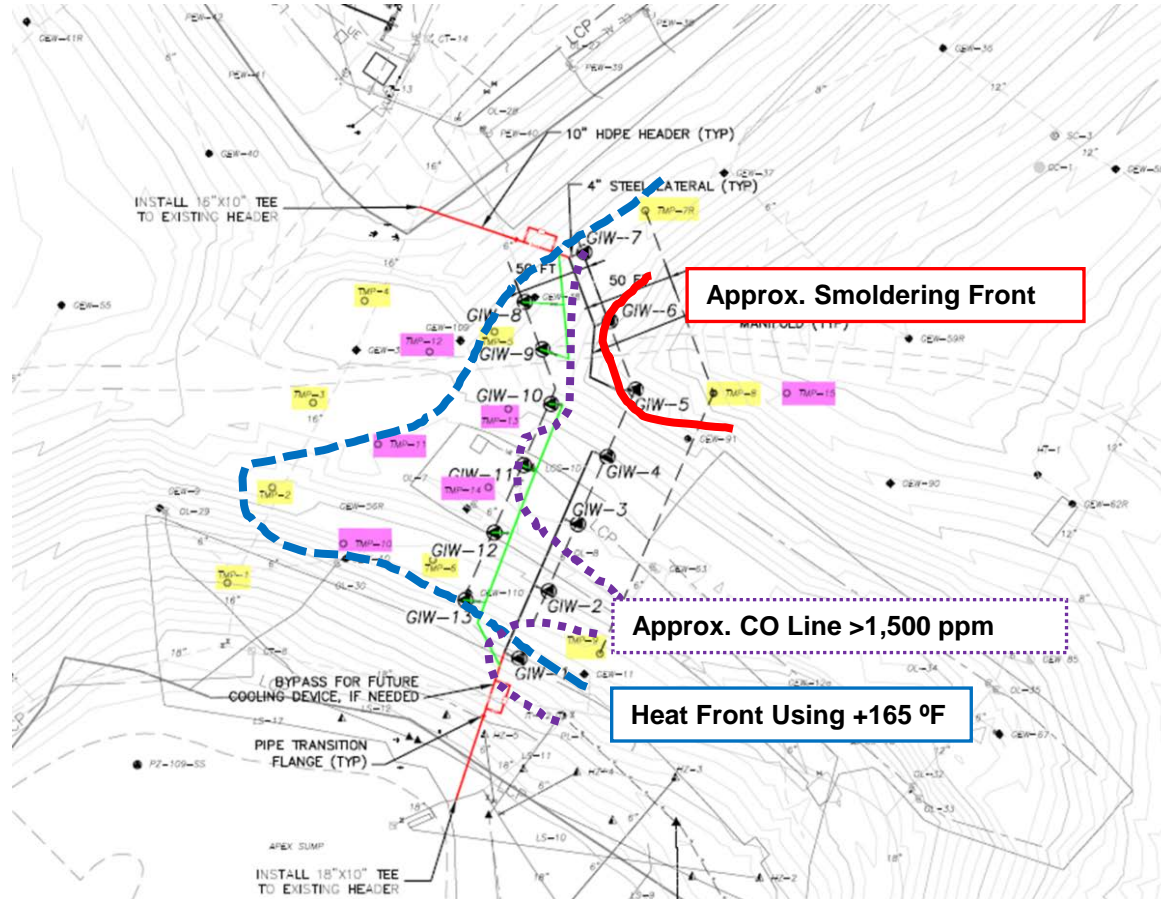
April 2013

CROSS-SECTION VIEW

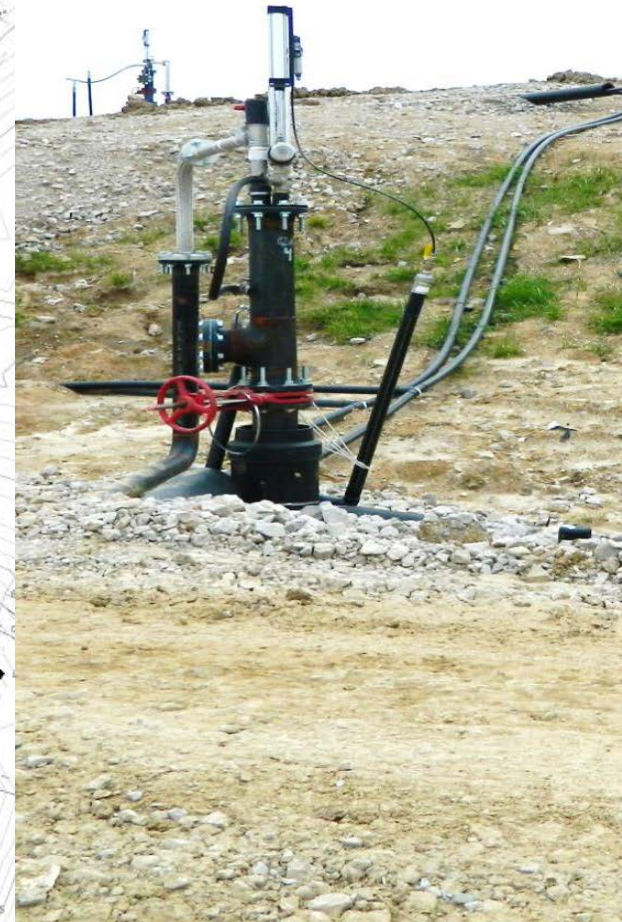
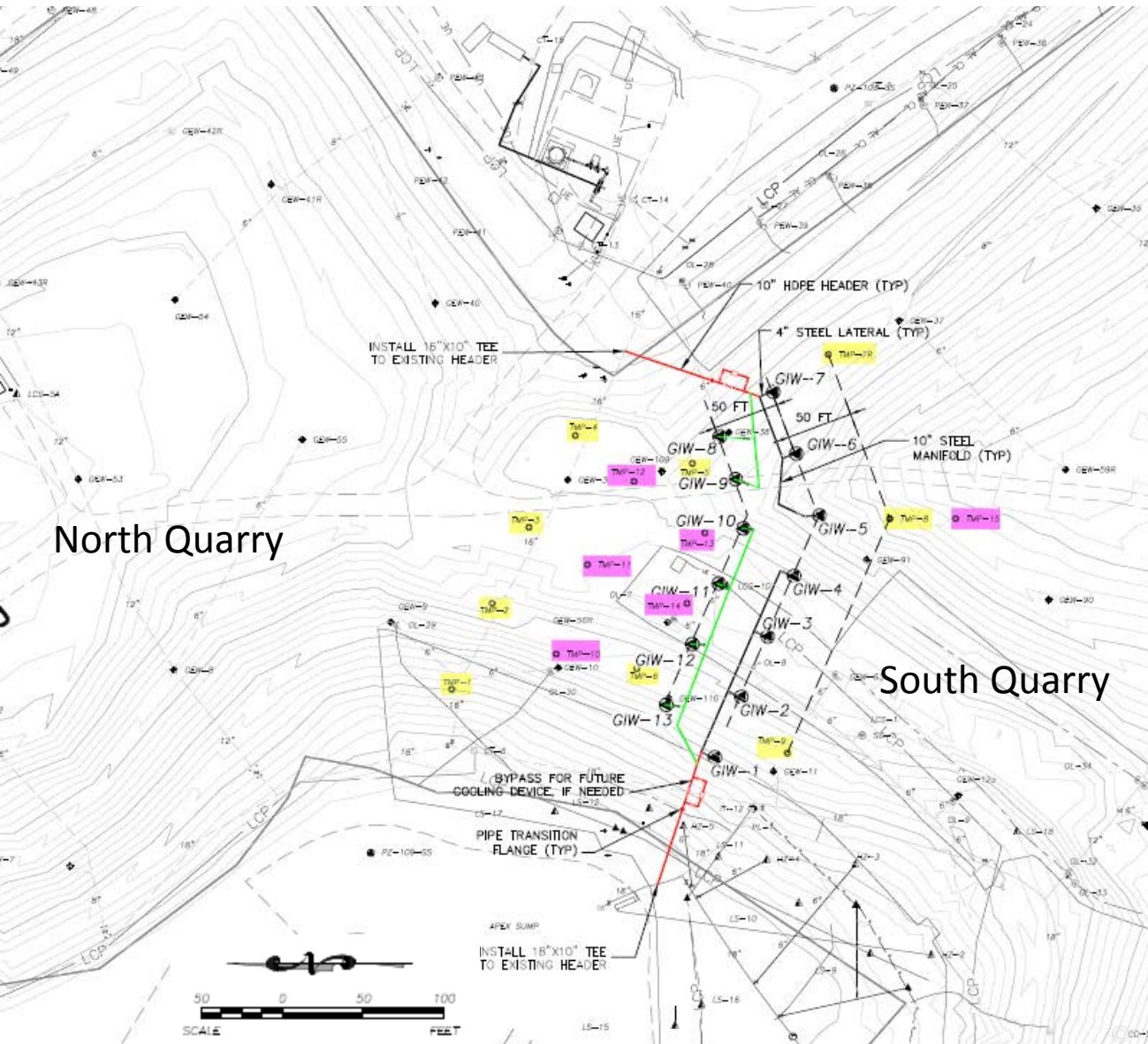




# How is Movement of the Subsurface Smoldering Event Tracked?

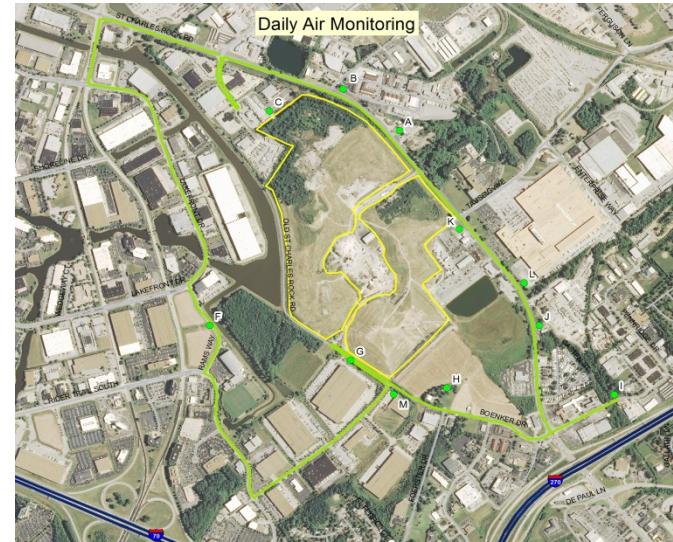


# What are Gas Interceptor Wells and Where are They Located?





# How is the Department Monitoring the Air?



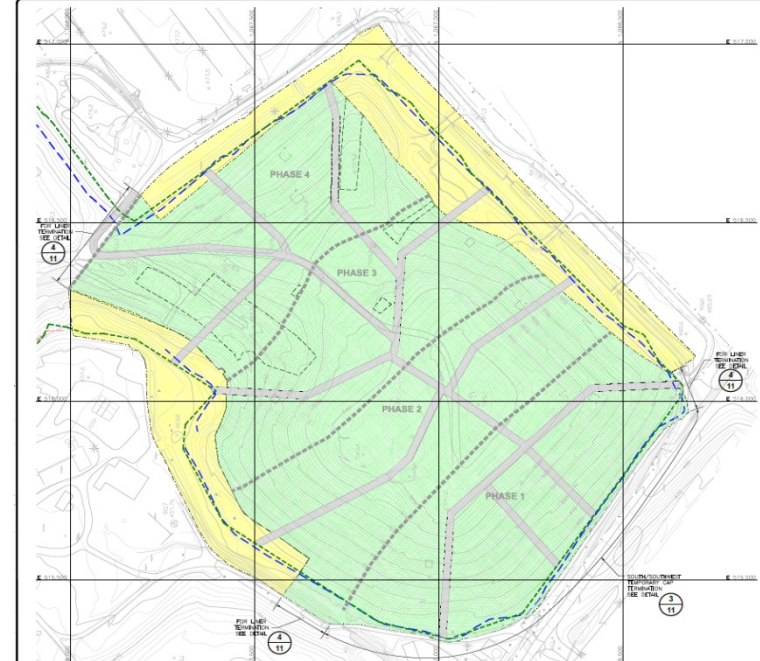


# How are Odors being Reduced?

## Engineered Capping to Contain Emissions



## Engineered Capping



## Upgrades to Gas Extraction System

