
BRIDGETON LANDFILL

2014 Q2 INFRASTRUCTURE

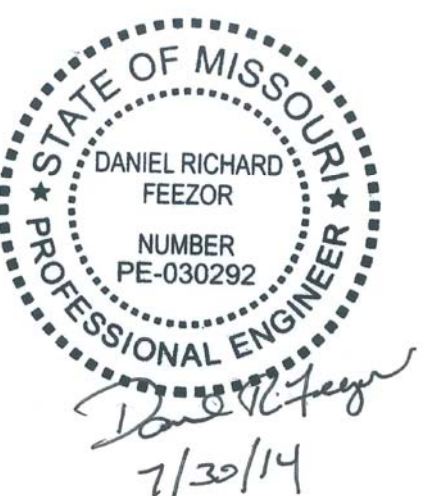
SUBMITTAL

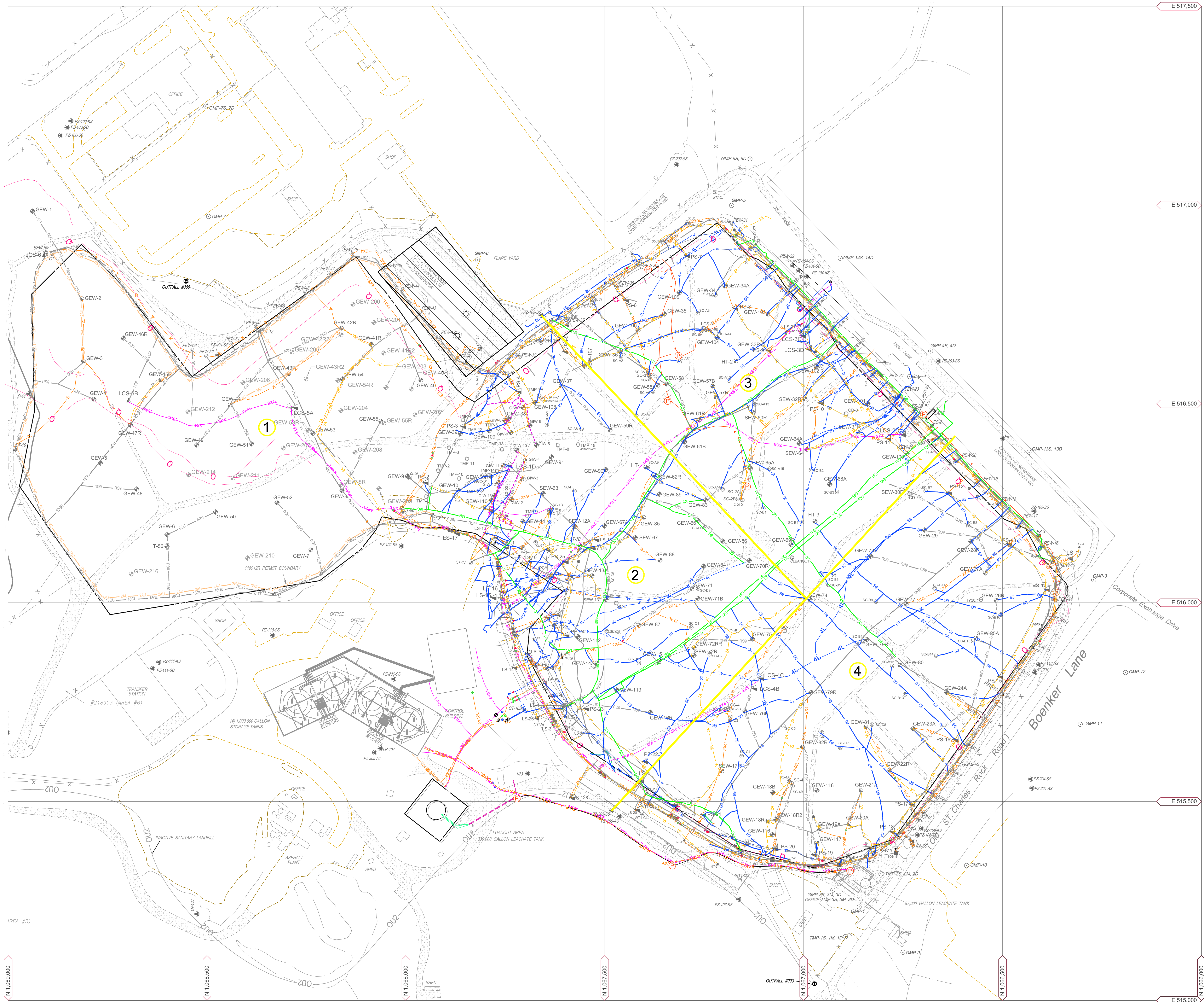
BRIDGETON LANDFILL, LLC
13570 ST. CHARLES ROCK ROAD
BRIDGETON, MISSOURI 63044

INDEX OF DRAWINGS	
	TITLE PAGE
001	SITE INFRASTRUCTURE PLAN (FULL COLOR)
002	SITE INFRASTRUCTURE PLAN
003	SITE INFRASTRUCTURE PLAN - GRIDS A,B,C,D
004	SITE INFRASTRUCTURE PLAN - GRID A
005	SITE INFRASTRUCTURE PLAN - GRID B
006	SITE INFRASTRUCTURE PLAN - GRID C
007	SITE INFRASTRUCTURE PLAN - GRID D



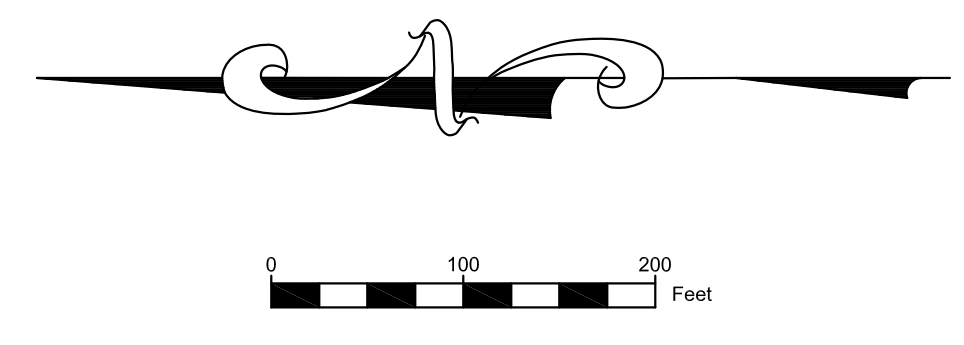
406 EAST WALNUT STREET
CHATHAM, IL 62629
TEL. (217) 483-3118
FAX. (217) 483-2356





LEGEND

	SOLID WASTE BOUNDARY
	GAS MONITORING PROBE
	PIEZOMETER MONITORING WELL
	GAS EXTRACTION WELL
	DUAL GAS EXTRACTION WELL
	SURFACE EXTRACTION WELL
	PERIMETER GAS EXTRACTION WELL
	LFG ISOLATION VALVE
	LEACHATE ISOLATION VALVE
	FLOW METER
	GRIT CHAMBER
	LIFT STATION
	CONDENSATE SUMP
	LEACHATE COLLECTION SUMP
	HORIZONTAL COLLECTION SUMP
	PERIMETER SUMP
	LEACHATE COLLECTION SUMP
	SURFACE COLLECTOR
	TEMPERATURE MONITORING PROBE
	SUBSURFACE RCP WELLS
	TRENCH SUMP
	INTERCEPTION TRENCH RISER
	PERIMETER LEACHATE SUMP
	WELL HEAD RISER
	WELL BORE BOOT
	TRENCH SUMP
	OVER LINER TIE IN POINT
	GAS INTERCEPTOR WELL
	CLEAN OUT
	QUADRANT #
	POWER PANEL
	QUARRY WALL
	LEACHATE COLLECTION PIPING
	DUAL CONTAINED LCS FORCE MAIN (SIZE VARIES)
	DUAL CONTAINED PERIMETER FORCE MAIN (SIZE VARIES)
	LEACHATE COLLECTION PIPING (SIZE VARIES)
	BUBBLE SUCKER
	TOE DRAIN
	4\"/>
	AIR LINE
	AIR LINE (PRESSURIZED BELOW GROUND)
	BURIED LFG COLLECTION PIPING
	2\"/>
	4\"/>
	6\"/>
	8\"/>
	6\"/>
	8\"/>
	10\"/>
	12\"/>
	18\"/>
	UNDERGROUND ELECTRIC LINE
	NATURAL GAS LINE
	WATERMAIN
	UNDERGROUND ELECTRIC LINE
	FIBER OPTIC LINE
	FENCE LINE
	INTERCEPTION TRENCH
	BUILDING

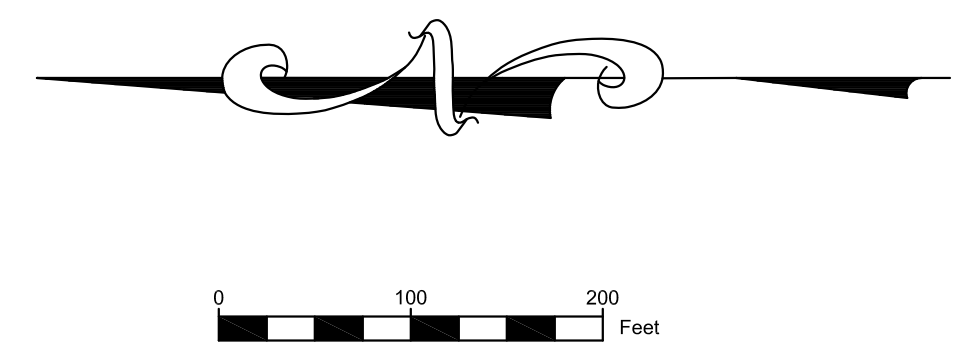


NOTE: SEVERAL SIGNIFICANT PROJECTS ARE CURRENTLY UNDER CONSTRUCTION AT SITE. AS-BUILTS TO BE SUBMITTED UPON COMPLETION AND CERTIFICATION.

BRIDGETON LANDFILL, LLC 13570 ST. CHARLES ROCK ROAD BRIDGETON, MISSOURI 63044	BRIDGETON LANDFILL SECOND QUARTER 2014 - SITE INFRASTRUCTURE		JULY 2014 DESIGNED BY: AMR APPROVED BY: DRF	DRAWING NO.:
SITE INFRASTRUCTURE PLAN (FULL COLOR)				001
PROJECT NUMBER: BT-023 FILE PATH: C:\Users\amr\Documents\Bridgeton\Bridgeton_2014\01_CAD\DWG\Bridgeton_2014_01_01_001.dwg		ENGINEERING, INC.	REVISION	DATE

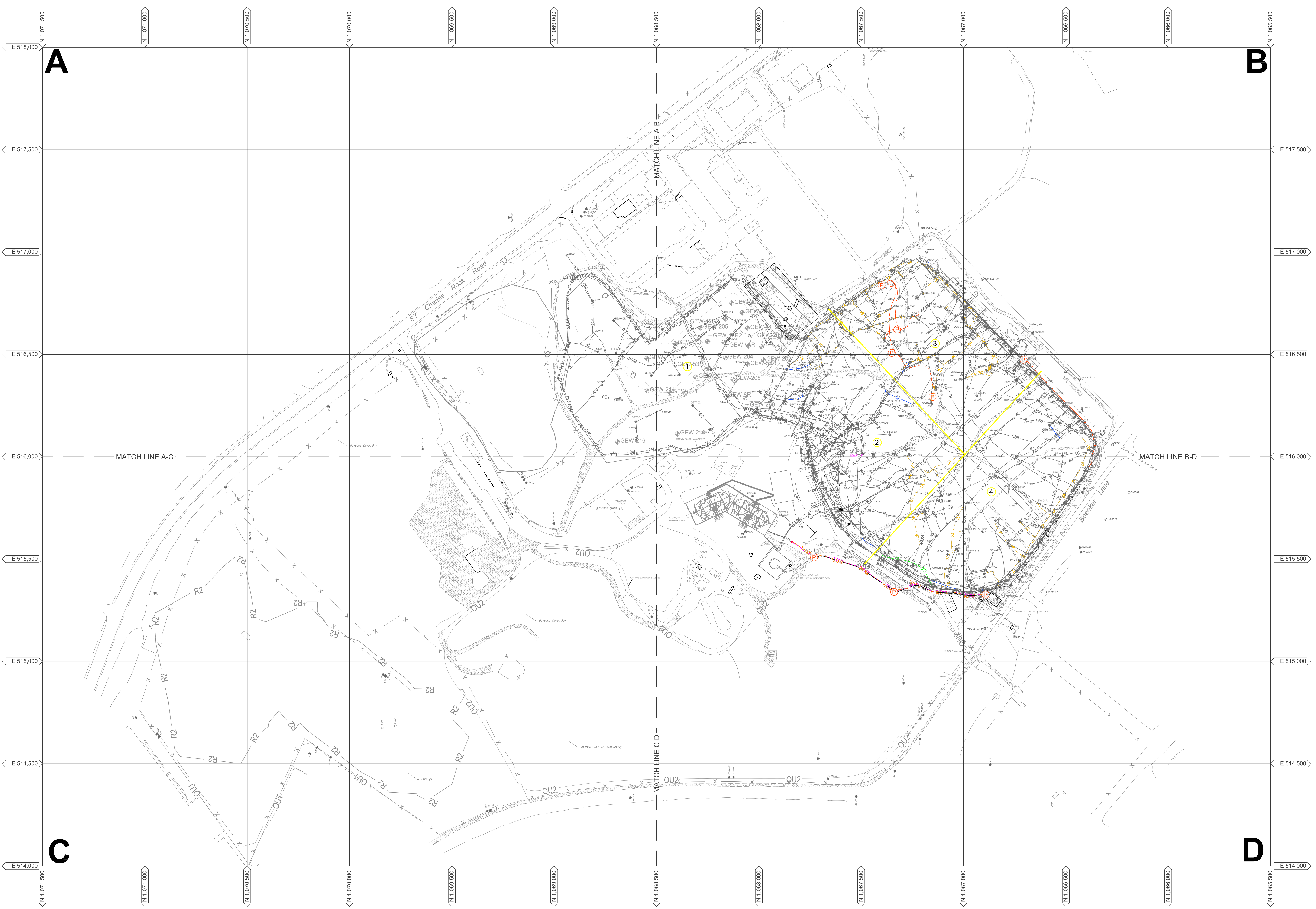


LEGEND	
	SOLID WASTE BOUNDARY
	GAS MONITORING PROBE
	PIEZOMETER MONITORING WELL
	GAS EXTRACTION WELL
	DUAL GAS EXTRACTION WELL
	SURFACE GAS EXTRACTION WELL
	PERIMETER GAS EXTRACTION WELL
	LFG ISOLATION VALVE
	LEACHATE ISOLATION VALVE
	FLOW METER
	GRIT CHAMBER
	LIFT STATION
	CONDENSATE SUMP
	LEACHATE COLLECTION SUMP
	HORIZONTAL COLLECTION SUMP
	PERIMETER SUMP
	LEACHATE COLLECTION SUMP
	SURFACE COLLECTOR
	TEMPERATURE MONITORING PROBE
	SUBSURFACE RCP WELLS
	TRENCH SUMP
	INTERCEPTION TRENCH RISER
	PERIMETER LEACHATE SUMP
	WELL HEAD RISER
	WELL BORE BOOT
	TRENCH SUMP
	OVER LINER TIE IN POINT
	GAS INTERCEPTOR WELL
	CLEAN OUT
	QUADRANT #
	POWER PANEL
	QUARRY WALL
	LEACHATE COLLECTION PIPING
	DUAL CONTAINED LCS FORCEMAIN (SIZE VARIES)
	DUAL CONTAINED PERIMETER FORCEMAIN (SIZE VARIES)
	LEACHATE COLLECTION PIPING (SIZE VARIES)
	BUBBLE SUCKER
	TOE DRAIN
	4\"/>
	AIR LINE
	AIR LINE (PRESSURIZED BELOW GROUND)
	BURIED LFG COLLECTION PIPING
	2\"/>
	4\"/>
	6\"/>
	8\"/>
	6\"/>
	8\"/>
	10\"/>
	12\"/>
	18\"/>
	UNDERGROUND ELECTRIC LINE
	NATURAL GAS LINE
	WATERMAIN
	UNDERGROUND ELECTRIC LINE
	FIBER OPTIC LINE
	FENCE LINE
	INTERCEPTION TRENCH
	BUILDING

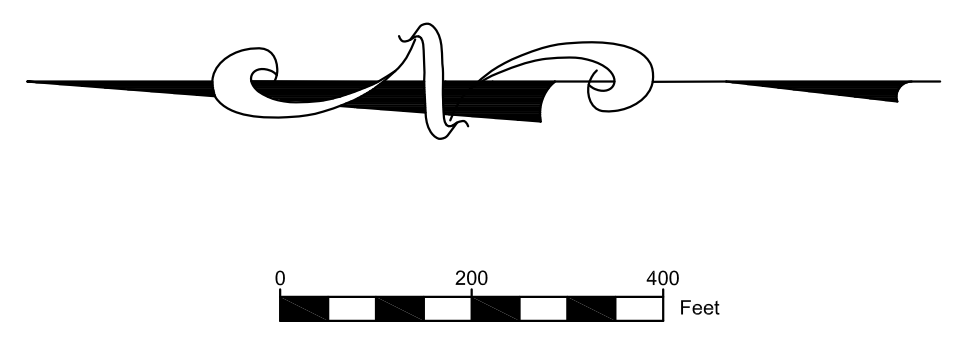


NOTE: SEVERAL SIGNIFICANT PROJECTS ARE CURRENTLY UNDER CONSTRUCTION AT SITE. AS-BUILTS TO BE SUBMITTED UPON COMPLETION AND CERTIFICATION.
 ALL FACILITIES SHOWN IN COLOR HAVE BEEN MODIFIED OR RESUBMITTED SINCE THE PREVIOUS SUBMITTAL. THE RESUBMITTAL WAS COMPLETED TO CAPTURE MINOR FIELD ADJUSTMENTS BY SITE PERSONNEL OR OTHER MINOR MODIFICATIONS.

BRIDGETON LANDFILL, LLC 13570 ST. CHARLES ROCK ROAD BRIDGETON, MISSOURI 63044	BRIDGETON LANDFILL SECOND QUARTER 2014 - SITE INFRASTRUCTURE		JULY 2014 DESIGNED BY: AMR APPROVED BY: DRF	DRAWING NO.:
SITE INFRASTRUCTURE PLAN				002
PROJECT NUMBER: BT-023 FILE PATH: C:\Users\amr\AppData\Local\Temp\14304\14304.dwg		REVISION		DATE

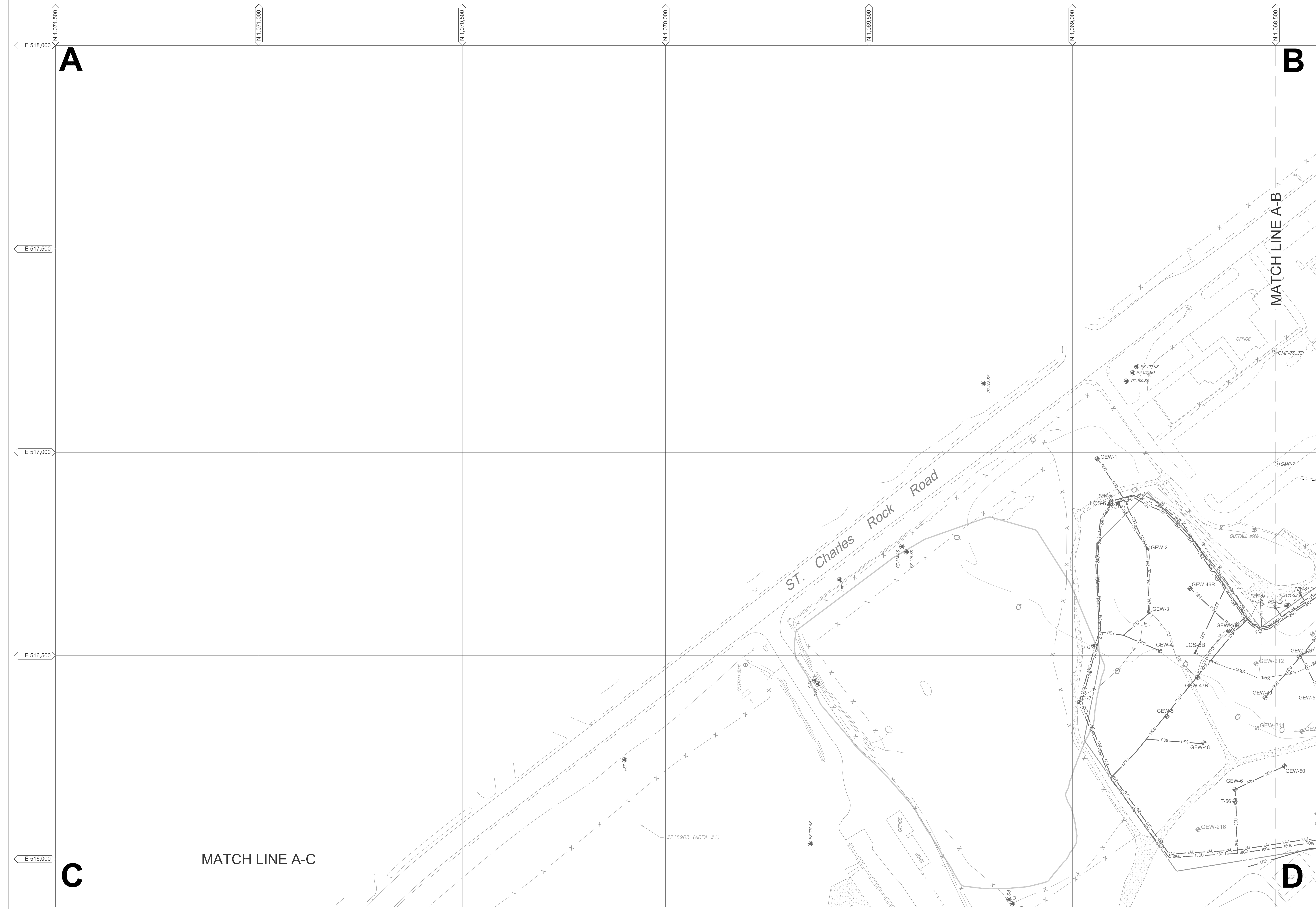


- LEGEND**
- SOLID WASTE BOUNDARY
 - GMP-4 GAS MONITORING PROBE
 - ▲ P2-204-AS PIEZOMETER MONITORING WELL
 - GEW-38 GAS EXTRACTION WELL
 - GEW-85 DUAL GAS EXTRACTION WELL
 - SEW-63 SURFACE EXTRACTION WELL
 - PEW-20 PERIMETER GAS EXTRACTION WELL
 - ⊗ LFG ISOLATION VALVE
 - ⊗ LEACHATE ISOLATION VALVE
 - ⊗ FLOW METER
 - ⊗ GRIT CHAMBER
 - ⊗ LIFT STATION
 - ⊗ CONDENSATE SUMP
 - ▲ LS-1 LEACHATE COLLECTION SUMP
 - ▲ PS-15 HORIZONTAL COLLECTION SUMP
 - ▲ LCS-2D PERIMETER SUMP
 - SC-81 LEACHATE COLLECTION SUMP
 - TAMP-9 SURFACE COLLECTOR
 - GC-3 TEMPERATURE MONITORING PROBE
 - TS-1 SUBSURFACE RCP WELLS
 - TRENCH SUMP
 - INT-1 INTERCEPTION TRENCH RISER
 - PL-1 PERIMETER LEACHATE SUMP
 - WH-1 WELL HEAD RISER
 - WB-1 WELL BORE BOOT
 - TRENCH SUMP
 - OL-1 OVER LINER TIE IN POINT
 - GI-1 GAS INTERCEPTOR WELL
 - CO-1 CLEAN OUT
 - QUADRANT #
 - POWER PANEL
 - QUARRY WALL
 - LEACHATE COLLECTION PIPING
 - DUAL CONTAINED LCS FORCEMAIN (SIZE VARIES)
 - DUAL CONTAINED PERIMETER FORCEMAIN (SIZE VARIES)
 - LEACHATE COLLECTION PIPING (SIZE VARIES)
 - BUBBLE SUCKER
 - 6TD TOE DRAIN
 - 4PU 4" PERFORATED TRENCH DRAIN
 - 2A AIR LINE
 - 2AU AIR LINE (PRESSURIZED BELOW GROUND)
 - BURIED LFG COLLECTION PIPING
 - 2" ABOVE GROUND LFG COLLECTION LATERAL PIPING
 - 4" ABOVE GROUND LFG COLLECTION LATERAL PIPING
 - 6" ABOVE GROUND LFG COLLECTION LATERAL PIPING
 - 8" ABOVE GROUND LFG COLLECTION LATERAL PIPING
 - 6" ABOVE GROUND LFG COLLECTION HEADER PIPING
 - 8" ABOVE GROUND LFG COLLECTION HEADER PIPING
 - 10" STEEL GROUND LFG COLLECTION PIPING
 - 12" ABOVE GROUND LFG COLLECTION HEADER PIPING
 - 18" ABOVE GROUND LFG COLLECTION HEADER PIPING
 - UNDERGROUND ELECTRIC LINE
 - NATURAL GAS LINE
 - WATERMAIN
 - UNDERGROUND ELECTRIC LINE
 - FIBER OPTIC LINE
 - FENCE LINE
 - INTERCEPTION TRENCH
 - BUILDING

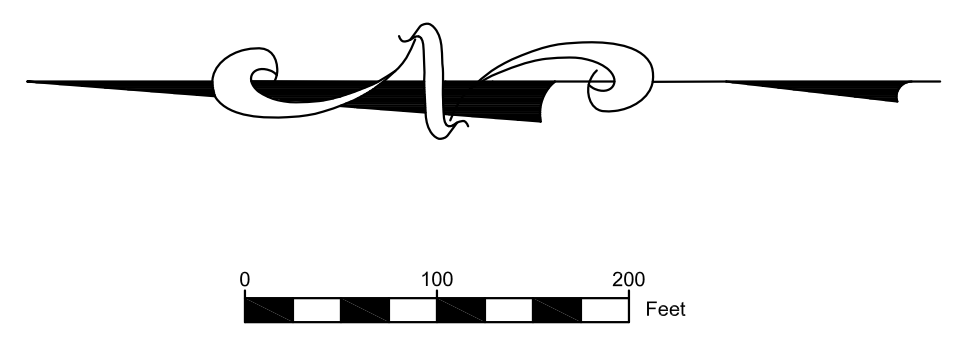


NOTE: SEVERAL SIGNIFICANT PROJECTS ARE CURRENTLY UNDER CONSTRUCTION AT SITE. AS-BUILTS TO BE SUBMITTED UPON COMPLETION AND CERTIFICATION.
 ALL FACILITIES SHOWN IN COLOR HAVE BEEN MODIFIED OR RESURVEYED SINCE THE PREVIOUS SUBMITTAL. THE RESURVEY WAS COMPLETED TO CAPTURE MINOR FIELD ADJUSTMENTS BY SITE PERSONNEL OR OTHER MINOR MODIFICATIONS.

BRIDGETON LANDFILL, LLC 13570 ST. CHARLES ROCK ROAD BRIDGETON, MISSOURI 63044	BRIDGETON LANDFILL SECOND QUARTER 2014 - SITE INFRASTRUCTURE		JULY 2014 DESIGNED BY: AMR APPROVED BY: DRF	DRAWING NO.:
SITE INFRASTRUCTURE PLAN - GRIDS A,B,C,D				003
PROJECT NUMBER: BT-023	FILE PATH: C:\Users\amr\AppData\Local\Temp\1\BT-023\Site Infrastructure\Site Infrastructure.dwg	REVISION	DATE	

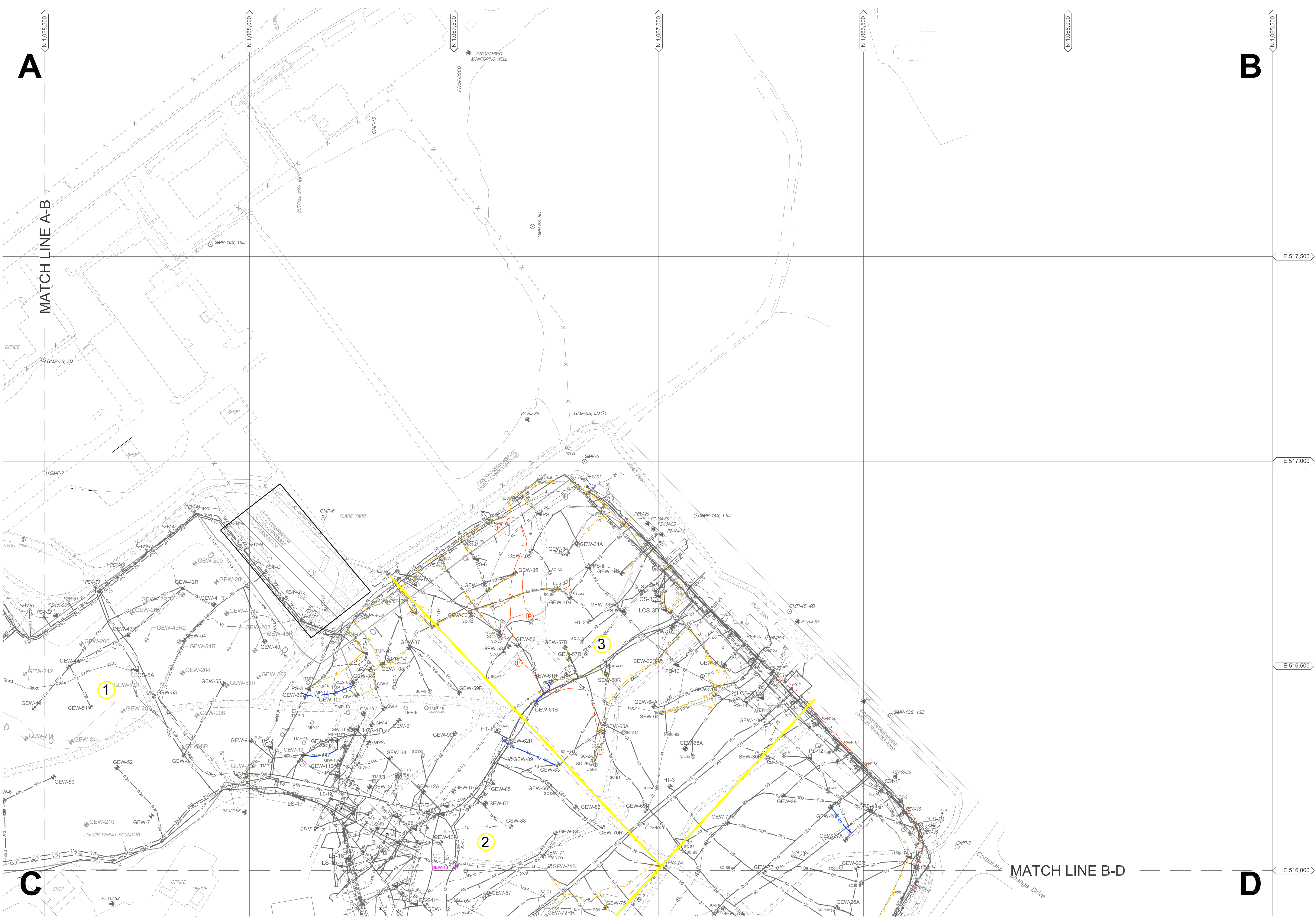


LEGEND	
	SOLID WASTE BOUNDARY
	GAS MONITORING PROBE
	PIEZOMETER MONITORING WELL
	GAS EXTRACTION WELL
	DUAL GAS EXTRACTION WELL
	SURFACE EXTRACTION WELL
	PERIMETER GAS EXTRACTION WELL
	LFG ISOLATION VALVE
	LEACHATE ISOLATION VALVE
	FLOW METER
	GRIT CHAMBER
	LIFT STATION
	CONDENSATE SUMP
	LEACHATE COLLECTION SUMP
	HORIZONTAL COLLECTION SUMP
	PERIMETER SUMP
	LEACHATE COLLECTION SUMP
	SURFACE COLLECTOR
	TEMPERATURE MONITORING PROBE
	SUBSURFACE RCP WELLS
	TRENCH SUMP
	INTERCEPTION TRENCH RISER
	PERIMETER LEACHATE SUMP
	WELL HEAD RISER
	WELL BORE BOOT
	TRENCH SUMP
	OVER LINER TIE IN POINT
	GAS INTERCEPTOR WELL
	CLEAN OUT
	QUADRANT #
	POWER PANEL
	QUARRY WALL
	LEACHATE COLLECTION PIPING
	DUAL CONTAINED LCS FORCE MAIN (SIZE VARIES)
	DUAL CONTAINED PERIMETER FORCE MAIN (SIZE VARIES)
	LEACHATE COLLECTION PIPING (SIZE VARIES)
	BUBBLE SUCKER
	TOE DRAIN
	4\"/>
	AIR LINE
	AIR LINE (PRESSURIZED BELOW GROUND)
	BURIED LFG COLLECTION PIPING
	2\"/>
	4\"/>
	6\"/>
	8\"/>
	6\"/>
	8\"/>
	10\"/>
	12\"/>
	18\"/>
	UNDERGROUND ELECTRIC LINE
	NATURAL GAS LINE
	WATERMAIN
	UNDERGROUND ELECTRIC LINE
	FIBER OPTIC LINE
	FENCE LINE
	INTERCEPTION TRENCH BUILDING



NOTE: SEVERAL SIGNIFICANT PROJECTS ARE CURRENTLY UNDER CONSTRUCTION AT SITE. AS-BUILTS TO BE SUBMITTED UPON COMPLETION AND CERTIFICATION.
 ALL FACILITIES SHOWN IN COLOR HAVE BEEN MODIFIED OR RESURVEYED SINCE THE PREVIOUS SUBMITTAL. THE RESURVEY WAS COMPLETED TO CAPTURE MINOR FIELD ADJUSTMENTS BY SITE PERSONNEL OR OTHER MINOR MODIFICATIONS.

BRIDGETON LANDFILL, LLC 13570 ST. CHARLES ROCK ROAD BRIDGETON, MISSOURI 63044	BRIDGETON LANDFILL SECOND QUARTER 2014 - SITE INFRASTRUCTURE		JULY 2014	DRAWING NO.:
SITE INFRASTRUCTURE PLAN - GRID A			DESIGNED BY: AMR APPROVED BY: DRF	004
PROJECT NUMBER: BT-023 FILE PATH: C:\Users\amr\Documents\Brideton\GIS\2014\2014-07-01_Colour\Site Map\2014-07-01_Site Map.dwg		ENGINEERING FOR A BETTER WORLD	REVISION	DATE

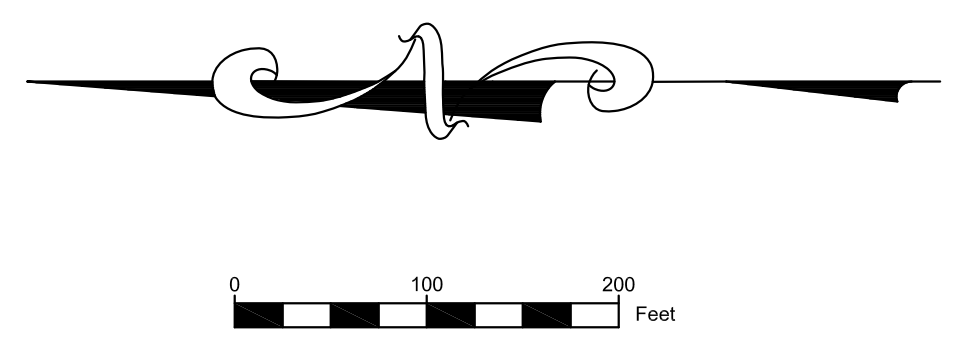


LEGEND

---	SOLID WASTE BOUNDARY
○ GMP-4	PIEZOMETER MONITORING WELL
▲ PZ-204-AS	GAS EXTRACTION WELL
● GEW-38	DUAL GAS EXTRACTION WELL
● GEW-85	SURFACE EXTRACTION WELL
● GEW-63	PERIMETER GAS EXTRACTION WELL
● GEW-27	LFG ISOLATION VALVE
⊗	LEACHATE ISOLATION VALVE
○	FLOW METER
○	GRIT CHAMBER
○	LIFT STATION
○	CONDENSATE SUMP
▲ LS-1	LEACHATE COLLECTION SUMP
▲ LS-6	HORIZONTAL COLLECTION SUMP
▲	PERIMETER SUMP
▲ PS-15	LEACHATE COLLECTION SUMP
▲ LCS-2D	SURFACE COLLECTOR
○ SC-81	TEMPERATURE MONITORING PROBE
○ SC-9	SUBSURFACE RCP WELLS
○ GC-3	TRENCH SUMP
●	INTERCEPTION TRENCH RISER
●	PERIMETER LEACHATE SUMP
●	WELL HEAD RISER
●	WELL BORE BOOT
■ TS-1	TRENCH SUMP
○ CL-12	OVER LINER TIE IN POINT
○ GW-4	GAS INTERCEPTOR WELL
○	CLEAN OUT
1	QUADRANT #
B	POWER PANEL
Q	QUARRY WALL
L	LEACHATE COLLECTION PIPING
L	DUAL CONTAINED LCS FORCEMAIN (SIZE VARIES)
L	DUAL CONTAINED PERIMETER FORCEMAIN (SIZE VARIES)
L	LEACHATE COLLECTION PIPING (SIZE VARIES)
L	BUBBLE SUCKER
6TD	TOE DRAIN
4PU	4" PERFORATED TRENCH DRAIN
2A	AIR LINE
2AU	AIR LINE (PRESSURIZED BELOW GROUND)
2G	BURIED LFG COLLECTION PIPING
2G	2" ABOVE GROUND LFG COLLECTION LATERAL PIPING
4G	4" ABOVE GROUND LFG COLLECTION LATERAL PIPING
6G	6" ABOVE GROUND LFG COLLECTION LATERAL PIPING
8G	8" ABOVE GROUND LFG COLLECTION LATERAL PIPING
6G	6" ABOVE GROUND LFG COLLECTION HEADER PIPING
8G	8" ABOVE GROUND LFG COLLECTION HEADER PIPING
10G	10" STEEL GROUND LFG COLLECTION PIPING
12G	12" ABOVE GROUND LFG COLLECTION HEADER PIPING
18G	18" ABOVE GROUND LFG COLLECTION HEADER PIPING
E	UNDERGROUND ELECTRIC LINE
G	NATURAL GAS LINE
W	WATERMAIN
E	UNDERGROUND ELECTRIC LINE
FO	FIBER OPTIC LINE
X	FENCE LINE
X	INTERCEPTION TRENCH
□	BUILDING

MATCH LINE B-D

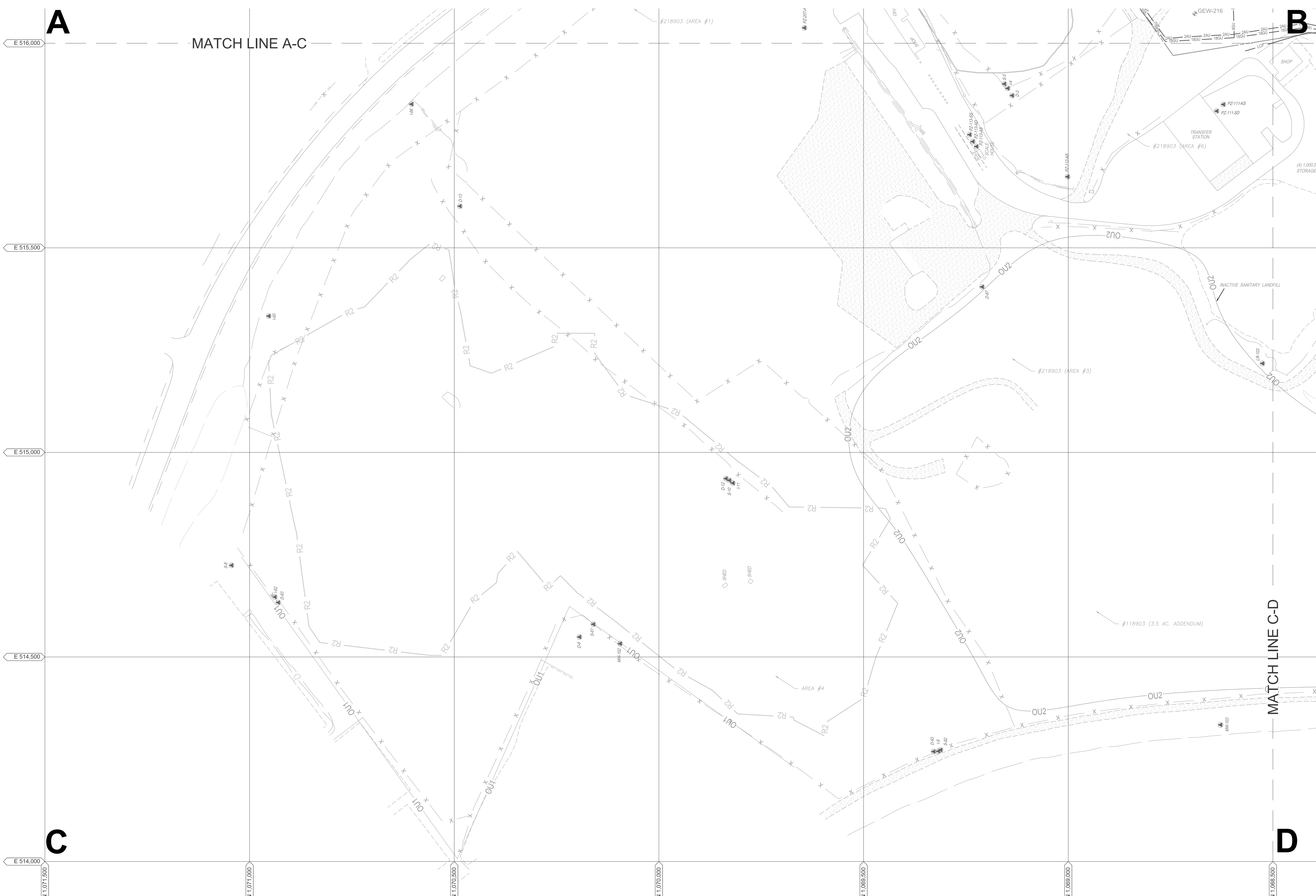
D



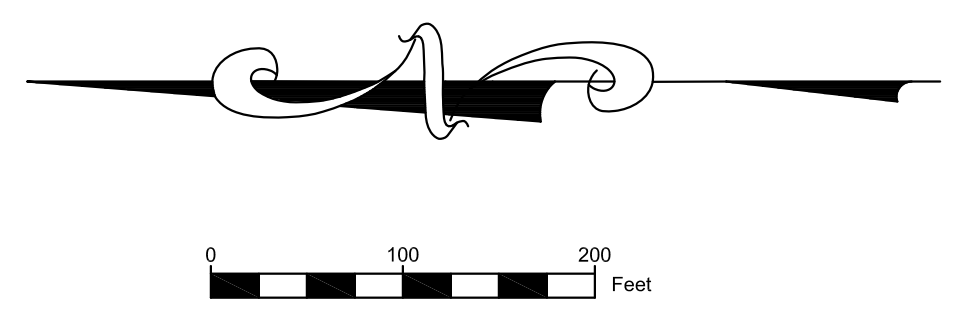
NOTE: SEVERAL SIGNIFICANT PROJECTS ARE CURRENTLY UNDER CONSTRUCTION AT SITE. AS-BUILTS TO BE SUBMITTED UPON COMPLETION AND CERTIFICATION.

ALL FACILITIES SHOWN IN COLOR HAVE BEEN MODIFIED OR RESURVEYED SINCE THE PREVIOUS SUBMITTAL. THE RESURVEY WAS COMPLETED TO CAPTURE MINOR FIELD ADJUSTMENTS BY SITE PERSONNEL, OR OTHER MINOR MODIFICATIONS.

BRIDGETON LANDFILL, LLC 13570 ST. CHARLES ROCK ROAD BRIDGETON, MISSOURI 63044	BRIDGETON LANDFILL SECOND QUARTER 2014 - SITE INFRASTRUCTURE		JULY 2014 DESIGNED BY: AMR APPROVED BY: DRF	DRAWING NO.:
SITE INFRASTRUCTURE PLAN - GRID B				005
PROJECT NUMBER: BT-023 FILE PATH: C:\Users\amr\Documents\Bridgeton\GIS\2014\20140701_Site Infrastructure Plan - Grid B.dwg		REVISION		DATE



- | LEGEND | |
|--------|--|
| | SOLID WASTE BOUNDARY |
| | GAS MONITORING PROBE |
| | PIEZOMETER MONITORING WELL |
| | GAS EXTRACTION WELL |
| | DUAL GAS EXTRACTION WELL |
| | SURFACE EXTRACTION WELL |
| | PERIMETER GAS EXTRACTION WELL |
| | LFG ISOLATION VALVE |
| | LEACHATE ISOLATION VALVE |
| | FLOW METER |
| | GRIT CHAMBER |
| | LIFT STATION |
| | CONDENSATE SUMP |
| | LEACHATE COLLECTION SUMP |
| | HORIZONTAL COLLECTION SUMP |
| | PERIMETER SUMP |
| | LEACHATE COLLECTION SUMP |
| | SURFACE COLLECTOR |
| | TEMPERATURE MONITORING PROBE |
| | SUBSURFACE RCP WELLS |
| | TRENCH SUMP |
| | INTERCEPTION TRENCH RISER |
| | PERIMETER LEACHATE SUMP |
| | WELL HEAD RISER |
| | WELL BORE BOOT |
| | TRENCH SUMP |
| | OVER LINER TIE IN POINT |
| | GAS INTERCEPTOR WELL |
| | CLEAN OUT |
| | QUADRANT # |
| | POWER PANEL |
| | QUARRY WALL |
| | LEACHATE COLLECTION PIPING |
| | DUAL CONTAINED LCS FORCEMAIN (SIZE VARIES) |
| | DUAL CONTAINED PERIMETER FORCEMAIN (SIZE VARIES) |
| | LEACHATE COLLECTION PIPING (SIZE VARIES) |
| | BUBBLE SUCKER |
| | TOE DRAIN |
| | 4\"/> |
| | AIR LINE |
| | AIR LINE (PRESSURIZED BELOW GROUND) |
| | BURIED LFG COLLECTION PIPING |
| | 2\"/> |
| | 4\"/> |
| | 6\"/> |
| | 8\"/> |
| | 6\"/> |
| | 8\"/> |
| | 10\"/> |
| | 12\"/> |
| | 18\"/> |
| | UNDERGROUND ELECTRIC LINE |
| | UNDERGROUND ELECTRIC LINE |
| | NATURAL GAS LINE |
| | WATERMAIN |
| | UNDERGROUND ELECTRIC LINE |
| | FIBER OPTIC LINE |
| | FENCE LINE |
| | INTERCEPTION TRENCH BUILDING |

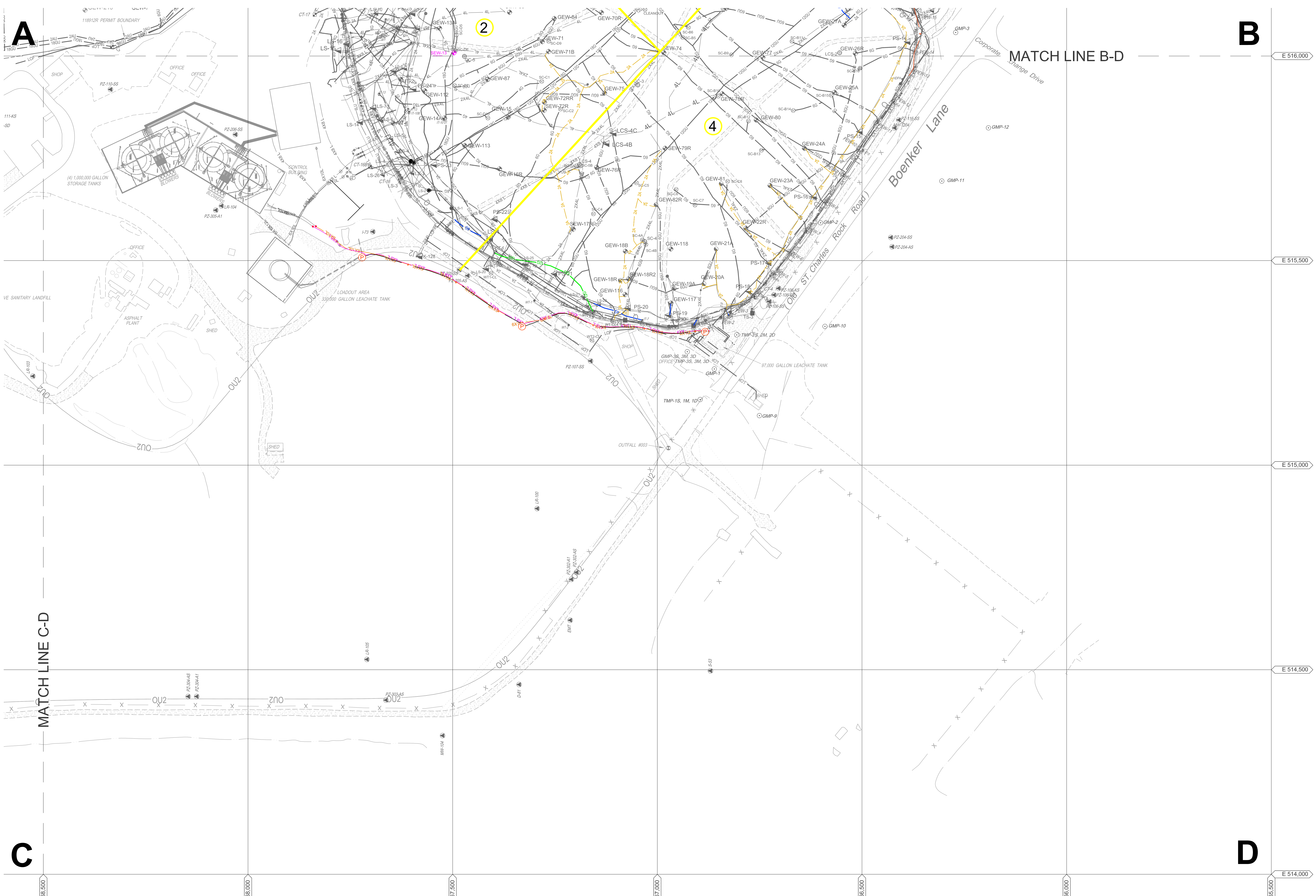


NOTE: SEVERAL SIGNIFICANT PROJECTS ARE CURRENTLY UNDER CONSTRUCTION AT SITE. AS-BUILTS TO BE SUBMITTED UPON COMPLETION AND CERTIFICATION.

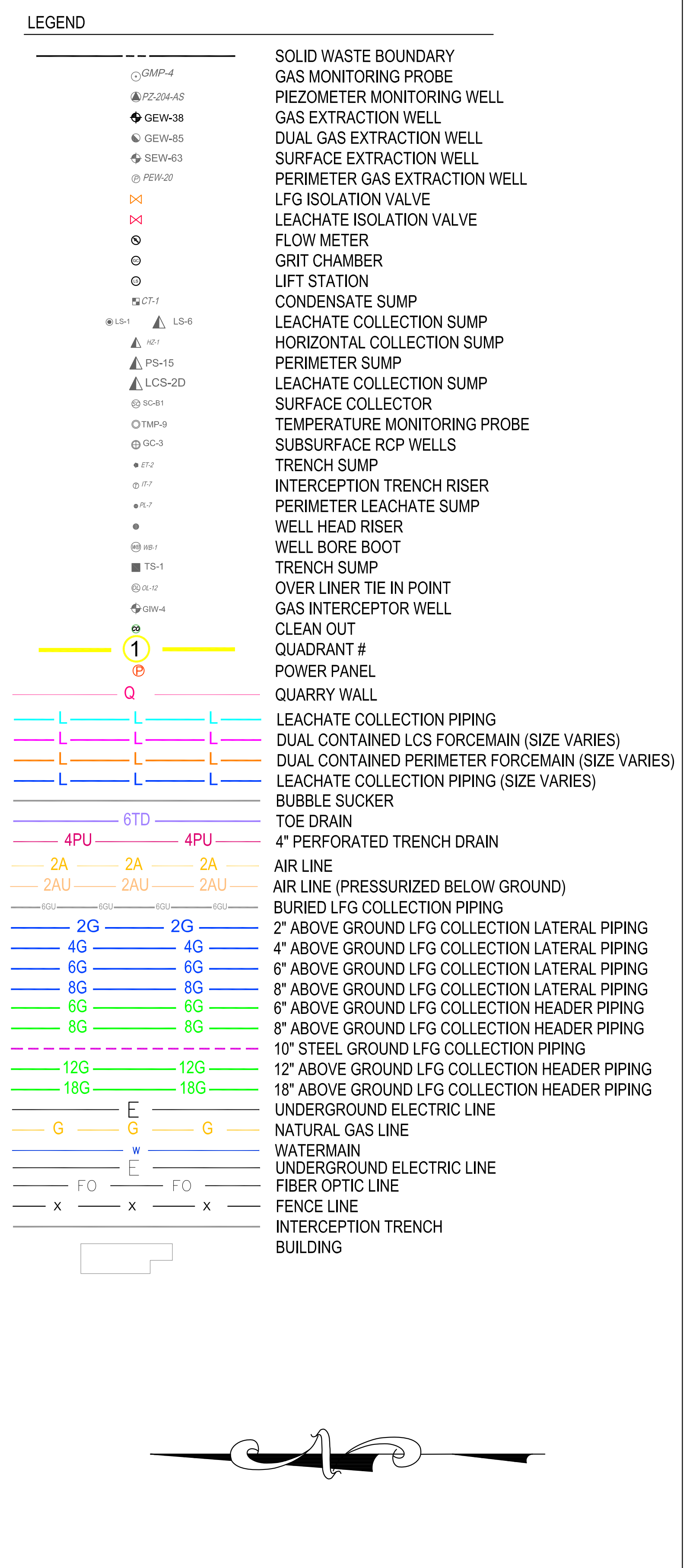
ALL FACILITIES SHOWN IN COLOR HAVE BEEN MODIFIED OR RESURVEYED SINCE THE PREVIOUS SUBMITTAL. THE RESURVEY WAS COMPLETED TO CAPTURE MINOR FIELD ADJUSTMENTS BY SITE PERSONNEL OR OTHER MINOR MODIFICATIONS.

BRIDGETON LANDFILL, LLC 13570 ST. CHARLES ROCK ROAD BRIDGETON, MISSOURI 63044	BRIDGETON LANDFILL SECOND QUARTER 2014 - SITE INFRASTRUCTURE		DESIGNED BY: AMR APPROVED BY: DRF JULY 2014	DRAWING NO.: 006
SITE INFRASTRUCTURE PLAN - GRID C			REVISION	DATE

PROJECT NUMBER: BT-023 | FILE PATH: C:\Users\amr\Desktop\Bridgeton\GIS\2014\2014-07-01\006\006.dwg



- ### LEGEND
- GMP-4
 - △ PZ-204-AS
 - ◆ GEW-38
 - GEW-85
 - ⊕ GEW-63
 - ⊕ GEW-20
 - ⊕ PZ-204-SS
 - ⊕ PZ-204-AS
 - ⊕ CT-1
 - ⊕ LS-1
 - △ LS-6
 - ⊕ PS-15
 - △ LCS-2D
 - ⊕ SC-81
 - ⊕ TWP-9
 - ⊕ GC-3
 - ⊕ ST-2
 - ⊕ ST-7
 - ⊕ ST-7
 - ⊕ ST-1
 - ⊕ ST-1
 - ⊕ ST-12
 - ⊕ GMP-4
 - ⊕
 - ①
 - ⊕
 - ⊕
 - L — L — L — LEACHATE COLLECTION PIPING
 - L — L — L — DUAL CONTAINED LCS FORCEMAIN (SIZE VARIES)
 - L — L — L — DUAL CONTAINED PERIMETER FORCEMAIN (SIZE VARIES)
 - L — L — L — LEACHATE COLLECTION PIPING (SIZE VARIES)
 - L — L — L — BUBBLE SUCKER
 - L — L — L — TOE DRAIN
 - 4PU — 4PU — 4PU — 4" PERFORATED TRENCH DRAIN
 - 2A — 2A — 2A — AIR LINE
 - 2AU — 2AU — 2AU — AIR LINE (PRESSURIZED BELOW GROUND)
 - 2G — 2G — 2G — 2" ABOVE GROUND LFG COLLECTION LATERAL PIPING
 - 4G — 4G — 4G — 4" ABOVE GROUND LFG COLLECTION LATERAL PIPING
 - 6G — 6G — 6G — 6" ABOVE GROUND LFG COLLECTION LATERAL PIPING
 - 8G — 8G — 8G — 8" ABOVE GROUND LFG COLLECTION LATERAL PIPING
 - 6G — 6G — 6G — 6" ABOVE GROUND LFG COLLECTION HEADER PIPING
 - 8G — 8G — 8G — 8" ABOVE GROUND LFG COLLECTION HEADER PIPING
 - 12G — 12G — 12G — 12" ABOVE GROUND LFG COLLECTION HEADER PIPING
 - 18G — 18G — 18G — 18" ABOVE GROUND LFG COLLECTION HEADER PIPING
 - E — E — E — UNDERGROUND ELECTRIC LINE
 - G — G — G — NATURAL GAS LINE
 - W — W — W — WATERMAIN
 - E — E — E — UNDERGROUND ELECTRIC LINE
 - FO — FO — FO — FIBER OPTIC LINE
 - X — X — X — FENCE LINE
 - X — X — X — INTERCEPTION TRENCH
 - ▭ BUILDING



NOTE: SEVERAL SIGNIFICANT PROJECTS ARE CURRENTLY UNDER CONSTRUCTION AT SITE. AS-BUILTS TO BE SUBMITTED UPON COMPLETION AND CERTIFICATION.

ALL FACILITIES SHOWN IN COLOR HAVE BEEN MODIFIED OR RESURVEYED SINCE THE PREVIOUS SUBMITTAL. THE RESURVEY WAS COMPLETED TO CAPTURE MINOR FIELD ADJUSTMENTS BY SITE PERSONNEL OR OTHER MINOR MODIFICATIONS.

BRIDGETON LANDFILL, LLC 13570 ST. CHARLES ROCK ROAD BRIDGETON, MISSOURI 63044	BRIDGETON LANDFILL SECOND QUARTER 2014 - SITE INFRASTRUCTURE	JULY 2014 DESIGNED BY: AMR APPROVED BY: DRF	DRAWING NO.: <h1 style="margin: 0;">007</h1>
SITE INFRASTRUCTURE PLAN - GRID D		FEEZOR ENGINEERING, INC.	REVISION DATE
<small>PROJECT NUMBER: BT-023 FILE PATH: C:\Users\amr\AppData\Local\Temp\1\20140707_13570 St. Charles Rock Road - 100%_007.dwg</small>			