

Atmospheric Analysis & Consulting, Inc.

Client : SWAPE
Client Project Name : Bridgeton Sanitary Landfill Air Quality Assessment
Client Project No. : NA
AAC Project No. : 130660
Reporting Date : 06/10/2013

On June 4, 2013, Atmospheric Analysis & Consulting, Inc. received four (4) DNPH impregnated silica gel cartridges for Carbonyls analysis by EPA Method TO-11A. Upon receipt the samples were assigned unique Laboratory ID numbers as follows:


| Client ID | AAC Sample ID |
|--------------|---------------|
| U-1 W2 DNPH | 130660-63302 |
| D-1 W5 DNPH | 130660-63303 |
| D-2 F/5 DNPH | 130660-63304 |
| D-3 SVP DNPH | 130660-63305 |

TO-11A - HPLC/UV analysis - A 10 μ L aliquot of the extract was analyzed by HPLC/UV following the analytical protocols of EPA Method TO-11A as specified in the SOW. Holding times for preparation and analysis were complied with.

No problems were encountered during the receipt, preparation, and/or analysis of these samples. The test results included in this report meet all requirements of the NELAC Standards and/or AAC SOP# TO.11.09.

I certify that this data is technically accurate, complete and in compliance with the terms and conditions of the contract. The Laboratory Director or his designee, as verified by the following signature, has authorized release of the data contained in this hardcopy data package.

If you have any questions or require further explanation of data results, please contact the undersigned.


Marcus Hueppe
Laboratory Director

This report consists of 46 pages.



AC# 150660

CHAIN OF CUSTODY RECORD / ANALYTICAL REQUEST FORM

Bridgeton Sanitary Landfill Air Quality Assessment

Client Name: SOIL / WATER AIR PROTECTION ENTERPRISE
 Telephone No. / Fax No.: (310) 434-0110 / (310) 434-0011
 Project Manager: PAUL ROSENFELD, PH.D.
 Address: 1640 FIFTH STREET, SUITE 204, SANTA MONICA, CA 90401
 Project Name and Location: BRIDGETON SANITARY LANDFILL AIR QUALITY ASSESSMENT

REQUESTED TESTS / ANALYSES

| LAB ID | SAMPLE ID NUMBER | Type | Date | Time | VOCS - EPA TO-15 | Reduced Sulfur Compounds - ASTM D5504 | Carbonyls - EPA TO-11A | Carboxylic Acids - Tube GC-MS | HCL - NIOSH 7903 | Ammonia - OSHA ID-188 | SO2 - OSHA ID-200 | HCN - NIOSH 6010 | Amines - NIOSH 2010M | Fixed Gases - EPA 3C | PAHs / Dioxins EPA TO-13A / 9A | Mercury - NIOSH 6009 | Odor Evaluation | |
|--------|------------------|------|------|------|------------------|---------------------------------------|------------------------|-------------------------------|------------------|-----------------------|-------------------|------------------|----------------------|----------------------|--------------------------------|----------------------|-----------------|--|
| 63302 | U-1 W2 | Tube | 6/3 | 4 Hr | | | X | | | | | | | | | | | |
| 63303 | D-1 WS | Tube | 6/3 | 4 Hr | | | X | | | | | | | | | | | |
| 63304 | D-2 F/S | Tube | 6/3 | 4 Hr | | | X | | | | | | | | | | | |
| 63305 | D-3 SVP | Tube | 6/3 | 4 Hr | | | X | | | | | | | | | | | |

Sampler Signature: *Paul Rosenfeld*

Sampled By: John Blank

Special Instructions / Conditions of Receipt

TOTAL Volume
 449.2 L
 440.60 / 249
 248.1 L
 436.90 / 178
 249.8 L
 444.060 / 272
 243.6 L

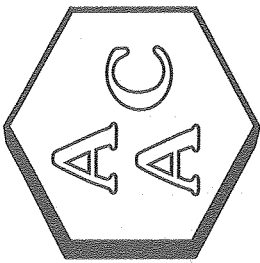
Requested Turnaround Time: Standard turn-around for all analyses. If possible deliver report within 2 weeks.
 QC Requirements: Provide Level IV QC Package for all Analyses.

| | | | | | |
|-----------------------------|----------------|---------|---------------------------------|--------------------------|--------------------------|
| Relinquished By: John Blank | Date: June 3rd | 12 Noon | Received By: <i>[Signature]</i> | Date: <i>[Signature]</i> | Time: <i>[Signature]</i> |
| Relinquished By: | Date: | Time: | Received By: | Date: | Time: |
| Relinquished By: | Date: | Time: | Received By: <i>[Signature]</i> | Date: 10/2/13 | Time: 10:30 |

HP
06/10/13

100c

Results



Atmospheric Analysis & Consulting, Inc.

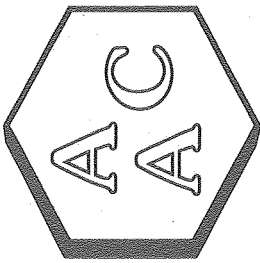
LABORATORY ANALYSIS REPORT Analysis of Carbonyls by EPA Method TO-11A

Client : SWAPE
 Client Project Name : Bridgetown Sanitary Landfill Air Quality Assessment
 AAC Project No. : 130660
 Analyst : HP/EG
 Units : ppbv
 Sampling Date (s) : 06/05/2013
 Receiving Date : 06/04/2013
 Analysis Date : 06/10/2013
 Reporting Date : 06/10/2013

| Client ID | AAC Sample ID | Formaldehyde | Acetaldehyde | Acrolein | Acetone | Propionaldehyde | Crotonaldehyde | Methacrolein | MEK & Butyraldehyde | Benzaldehyde | Valeraldehyde | m-Tolaldehyde | Hexaldehyde |
|---------------------|---------------|----------------|----------------|---------------|----------------|-----------------|----------------|---------------|---------------------|----------------|---------------|---------------|---------------|
| U-1 W2 DNPH SRL | 130660-63302 | 0.558 0.247 | 0.302 0.168 | <SRL 0.132 | 1.75 0.128 | <SRL 0.128 | 1.05 0.106 | <SRL 0.106 | 0.396 0.103 | 0.076 0.070 | <SRL 0.086 | <SRL 0.062 | <SRL 0.074 |
| D-1 W5 DNPH SRL | 130660-63303 | <SRL 0.246 | 0.179 0.168 | <SRL 0.132 | 1.69 0.127 | <SRL 0.127 | 0.290 0.105 | <SRL 0.105 | 0.428 0.102 | 0.208 0.070 | <SRL 0.086 | <SRL 0.062 | <SRL 0.074 |
| D-2 F/5 DNPH SRL | 130660-63304 | 0.581 0.244 | 0.383 0.167 | <SRL 0.131 | 1.89 0.126 | <SRL 0.126 | 0.759 0.105 | <SRL 0.105 | 0.269 0.102 | <SRL 0.069 | <SRL 0.085 | <SRL 0.061 | <SRL 0.073 |
| D-3 SVP DNPH SRL | 130660-63305 | 0.258 0.251 | 0.219 0.171 | <SRL 0.134 | 0.809 0.130 | <SRL 0.130 | 0.271 0.107 | <SRL 0.107 | 0.345 0.104 | 0.167 0.071 | <SRL 0.087 | <SRL 0.063 | <SRL 0.075 |

<SRL-compound was analyzed for but not detected at or above the SRL (Sample Reporting Limit)


 Marcus Hueppe
 Laboratory Director



Atmospheric Analysis & Consulting, Inc.

LABORATORY ANALYSIS REPORT Analysis of Carbonyls by EPA Method TO-11A

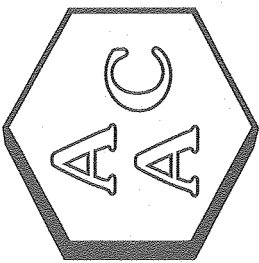
Client : SWAPE
 Client Project Name : Bridgetown Sanitary Landfill Air Quality Assessment
 AAC Project No. : 130660
 Analyst : HP/EG
 Units : ug/m³

Sampling Date (s) : 06/03/2013
 Receiving Date : 06/04/2013
 Analysis Date : 06/10/2013
 Reporting Date : 06/10/2013

| Client ID | AAC Sample ID | Formaldehyde | Acetaldehyde | Acrolein | Acetone | Propionaldehyde | Crotonaldehyde | Methacrolein | MEK & Butyraldehyde | Benzaldehyde | Valeraldehyde | m-Tolualdehyde | Hexaldehyde |
|---------------------|---------------|----------------|----------------|---------------|---------------|-----------------|----------------|---------------|---------------------|----------------|---------------|----------------|---------------|
| U-1 W2 DNPH SRL | 130660-63302 | 0.686 0.303 | 0.544 0.303 | <SRL 0.303 | 4.16 0.303 | <SRL 0.303 | 3.02 0.303 | <SRL 0.303 | 1.17 0.303 | 0.331 0.303 | <SRL 0.303 | <SRL 0.303 | <SRL 0.303 |
| D-1 W5 DNPH SRL | 130660-63303 | <SRL 0.302 | 0.322 0.302 | <SRL 0.302 | 4.01 0.302 | <SRL 0.302 | 0.832 0.302 | <SRL 0.302 | 1.26 0.302 | 0.901 0.302 | <SRL 0.302 | <SRL 0.302 | <SRL 0.302 |
| D-2 F/5 DNPH SRL | 130660-63304 | 0.713 0.300 | 0.691 0.300 | <SRL 0.300 | 4.50 0.300 | <SRL 0.300 | 2.18 0.300 | <SRL 0.300 | 0.793 0.300 | <SRL 0.300 | <SRL 0.300 | <SRL 0.300 | <SRL 0.300 |
| D-3 SVP DNPH SRL | 130660-63305 | 0.317 0.308 | 0.395 0.308 | <SRL 0.308 | 1.92 0.308 | <SRL 0.308 | 0.777 0.308 | <SRL 0.308 | 1.02 0.308 | 0.727 0.308 | <SRL 0.308 | <SRL 0.308 | <SRL 0.308 |

<SRL-compound was analyzed for but not detected at or above the SRL (Sample Reporting Limit)

Marcus Hueppe
 Laboratory Director



Atmospheric Analysis & Consulting, Inc.

LABORATORY ANALYSIS REPORT Analysis of Carbonyls by EPA Method TO-11A

Client : SWAPE
 Client Project Name : Bridgetown Sanitary Landfill Air Quality Assessment
 AAC Project No. : 130660
 Analyst : HP/EG
 Units : ug/sample

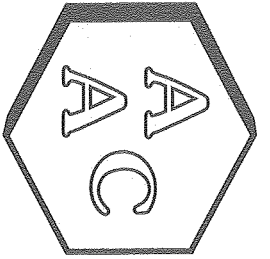
Sampling Date (s) : 06/03/2013
 Receiving Date : 06/04/2013
 Analysis Date : 06/10/2013
 Reporting Date : 06/10/2013

| Client ID | AAC Sample ID | Formaldehyde | Acetaldehyde | Acrolein | Acetone | Propionaldehyde | Crotonaldehyde | Methacrolein | MEK & Butyraldehyde | Benzaldehyde | Valeraldehyde | m-Tolualdehyde | Hexaldehyde |
|---------------------|---------------|----------------|----------------|---------------|----------------|-----------------|----------------|---------------|---------------------|----------------|---------------|----------------|---------------|
| U-1 W2 DNPH SRL | 130660-63302 | 0.170 0.075 | 0.134 0.075 | <SRL 0.075 | 1.03 0.075 | <SRL 0.075 | 0.746 0.075 | <SRL 0.075 | 0.289 0.075 | 0.082 0.075 | <SRL 0.075 | <SRL 0.075 | <SRL 0.075 |
| D-1 W5 DNPH SRL | 130660-63303 | <SRL 0.075 | 0.080 0.075 | <SRL 0.075 | 1.00 0.075 | <SRL 0.075 | 0.206 0.075 | <SRL 0.075 | 0.313 0.075 | 0.224 0.075 | <SRL 0.075 | <SRL 0.075 | <SRL 0.075 |
| D-2 F/5 DNPH SRL | 130660-63304 | 0.178 0.075 | 0.173 0.075 | <SRL 0.075 | 1.12 0.075 | <SRL 0.075 | 0.544 0.075 | <SRL 0.075 | 0.198 0.075 | <SRL 0.075 | <SRL 0.075 | <SRL 0.075 | <SRL 0.075 |
| D-3 SVP DNPH SRL | 130660-63305 | 0.077 0.075 | 0.096 0.075 | <SRL 0.075 | 0.468 0.075 | <SRL 0.075 | 0.189 0.075 | <SRL 0.075 | 0.248 0.075 | 0.177 0.075 | <SRL 0.075 | <SRL 0.075 | <SRL 0.075 |

<SRL-compound was analyzed for but not detected at or above the SRL (Sample Reporting Limit)

Marcus Hueppe
 Marcus Hueppe
 Laboratory Director

QA/QC Summary



Atmospheric Analysis & Consulting, Inc.

Quality Control/Quality Assurance Report

TO-11A

HPLC Calibration Verification of the 01/16/2013 Calibration

Analysis Date : 06/10/2013
 Analyst : HP/EG

Instrument ID : HPLC 01

Opening CCV

| Standard Concentration (ug/mL) | Formaldehyde (ug/mL) | Acetaldehyde (ug/mL) | Acrolein (ug/mL) | Acetone (ug/mL) | Propionaldehyde (ug/mL) | Crotonaldehyde (ug/mL) | Methacrolein (ug/mL) | MEK & Butyraldehyde (ug/mL) | Benzaldehyde (ug/mL) | Valeraldehyde (ug/mL) | m-Tolualdehyde (ug/mL) | Hexaldehyde (ug/mL) |
|--------------------------------|----------------------|----------------------|------------------|-----------------|-------------------------|------------------------|----------------------|-----------------------------|----------------------|-----------------------|------------------------|---------------------|
| 2.50 | 2.67 | 2.69 | 2.70 | 2.67 | 2.67 | 2.64 | 2.67 | 5.33 | 2.60 | 2.67 | 2.66 | 2.65 |
| Accuracy (%)* | 107 | 108 | 108 | 107 | 107 | 106 | 107 | 107 | 104 | 107 | 106 | 106 |

Closing CCV

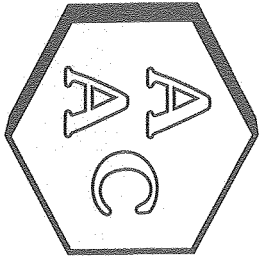
| Standard Concentration (ug/mL) | Formaldehyde (ug/mL) | Acetaldehyde (ug/mL) | Acrolein (ug/mL) | Acetone (ug/mL) | Propionaldehyde (ug/mL) | Crotonaldehyde (ug/mL) | Methacrolein (ug/mL) | MEK & Butyraldehyde (ug/mL) | Benzaldehyde (ug/mL) | Valeraldehyde (ug/mL) | m-Tolualdehyde (ug/mL) | Hexaldehyde (ug/mL) |
|--------------------------------|----------------------|----------------------|------------------|-----------------|-------------------------|------------------------|----------------------|-----------------------------|----------------------|-----------------------|------------------------|---------------------|
| 2.50 | 2.65 | 2.68 | 2.73 | 2.69 | 2.70 | 2.68 | 2.68 | 5.35 | 2.63 | 2.71 | 2.73 | 2.70 |
| Accuracy (%)* | 106 | 107 | 109 | 108 | 108 | 107 | 107 | 107 | 105 | 108 | 109 | 108 |

Second Source

| Standard Concentration (ug/mL) | Formaldehyde (ug/mL) | Acetaldehyde (ug/mL) | Acrolein (ug/mL) | Acetone (ug/mL) | Propionaldehyde (ug/mL) | Crotonaldehyde (ug/mL) | Methacrolein (ug/mL) | MEK & Butyraldehyde (ug/mL) | Benzaldehyde (ug/mL) | Valeraldehyde (ug/mL) | m-Tolualdehyde (ug/mL) | Hexaldehyde (ug/mL) |
|--------------------------------|----------------------|----------------------|------------------|-----------------|-------------------------|------------------------|----------------------|-----------------------------|----------------------|-----------------------|------------------------|---------------------|
| 2.50 | 2.61 | 2.63 | 2.64 | 2.62 | 2.61 | 2.59 | 2.60 | 5.20 | 2.55 | 2.60 | 2.62 | 2.58 |
| Accuracy (%)* | 104 | 105 | 106 | 105 | 104 | 104 | 104 | 104 | 102 | 104 | 105 | 103 |

*Must be 100 ± 10%

Marcus Hueppe
 Marcus Hueppe
 Laboratory Director



Atmospheric Analysis & Consulting, Inc.

Quality Control/Quality Assurance Report TO-11A Laboratory Control Spike Analysis


Analysis Date : 06/10/2013

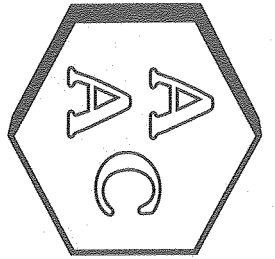
Analyst : HP/EG

Instrument ID : HPLC 01

| Analytes | Formaldehyde (ug/ml) | Acetaldehyde (ug/ml) | Acrolein (ug/ml) | Acetone (ug/ml) | Propionaldehyde (ug/ml) | Crotonaldehyde (ug/ml) | Methacrolein (ug/ml) | MEK & Butyraldehyde (ug/ml) | Benzaldehyde (ug/ml) | Valeraldehyde (ug/ml) | m-Tolualdehyde (ug/ml) | Hexaldehyde (ug/ml) |
|-------------------------------------|----------------------|----------------------|------------------|-----------------|-------------------------|------------------------|----------------------|-----------------------------|----------------------|-----------------------|------------------------|---------------------|
| Laboratory Control Spike 1 | | | | | | | | | | | | |
| Sample Concentration (ug/mL) | 0.000 | 0.000 | 0.000 | 0.000 | 0.000 | 0.000 | 0.000 | 0.000 | 0.000 | 0.000 | 0.000 | 0.000 |
| Spike Concentration (ug/mL) | 0.379 | 0.379 | 0.379 | 0.379 | 0.379 | 0.379 | 0.379 | 0.758 | 0.379 | 0.379 | 0.379 | 0.379 |
| Spiked Sample Concentration (ug/mL) | 0.373 | 0.384 | 0.392 | 0.352 | 0.387 | 0.368 | 0.430 | 0.713 | 0.375 | 0.385 | 0.381 | 0.394 |
| Spike Recovery (%)* | 98.4 | 101 | 103 | 92.9 | 102 | 97.3 | 114 | 94.2 | 99.0 | 102 | 101 | 104 |

*Must be 100 ± 15%


Marcus Hueppe
Laboratory Director



Atmospheric Analysis & Consulting, Inc.

Quality Control/Quality Assurance Report TO-11A Matrix Spike Analysis


Analysis Date : 06/10/2013

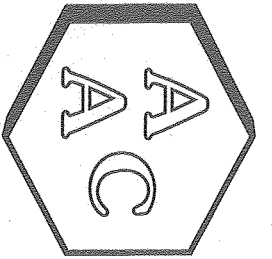
Analyst : HP/EG

Instrument ID : HPLC 01

| Analytes | Formaldehyde (ug/ml) | Acetaldehyde (ug/ml) | Acrolein (ug/ml) | Acetone (ug/ml) | Propionaldehyde (ug/ml) | Crotonaldehyde (ug/ml) | Methacrolein (ug/ml) | MEK & Butyraldehyde (ug/ml) | Benzaldehyde (ug/ml) | Valeraldehyde (ug/ml) | m-Tolualdehyde (ug/ml) | Hexaldehyde (ug/ml) |
|---|----------------------|----------------------|------------------|-----------------|-------------------------|------------------------|----------------------|-----------------------------|----------------------|-----------------------|------------------------|---------------------|
| Sample ID | 130660-63302 | | | | | | | | | | | |
| Sample Concentration (ug/mL) | 0.028 | 0.022 | 0.001 | 0.171 | 0.006 | 0.124 | 0.010 | 0.048 | 0.014 | 0.008 | 0.009 | 0.008 |
| Spike Concentration (ug/mL) | 1.25 | 1.25 | 1.25 | 1.25 | 1.25 | 1.25 | 1.25 | 2.50 | 1.25 | 1.25 | 1.25 | 1.25 |
| Spiked Sample Concentration (ug/mL) | 1.35 | 1.32 | 1.33 | 1.51 | 1.32 | 1.44 | 1.40 | 2.60 | 1.30 | 1.33 | 1.35 | 1.33 |
| Duplicate Spiked Sample Concentration (ug/mL) | 1.35 | 1.31 | 1.33 | 1.49 | 1.31 | 1.43 | 1.40 | 2.58 | 1.29 | 1.32 | 1.33 | 1.32 |
| Spike Recovery (%)* | 106 | 104 | 106 | 107 | 105 | 105 | 111 | 102 | 103 | 106 | 107 | 106 |
| Duplicate Spike Recovery (%)* | 106 | 103 | 106 | 105 | 104 | 104 | 111 | 101 | 102 | 105 | 106 | 105 |
| RPD** | 0.0 | 0.8 | 0.0 | 1.3 | 0.8 | 0.7 | 0.0 | 0.8 | 0.8 | 0.8 | 1.5 | 0.8 |

*Must be 100± 25%
** Must be ≤ 25%


 Marcus Hueppe
 Laboratory Director



Atmospheric Analysis & Consulting, Inc.


Quality Control/Quality Assurance Report TO-11A Duplicate Analysis

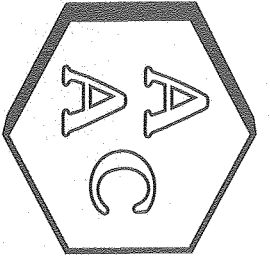
Analysis Date : 06/10/2013
 Analyst : HP/EG

Instrument ID : HPLC 01

| Analyte | Formaldehyde (ug/ml) | Acetaldehyde (ug/ml) | Acrolein (ug/ml) | Acetone (ug/ml) | Propionaldehyde (ug/ml) | Crotonaldehyde (ug/ml) | Methacrolein (ug/ml) | MEX & Butyraldehyde (ug/ml) | Benzaldehyde (ug/ml) | Valeraldehyde (ug/ml) | n-Heptaldehyde (ug/ml) | Hexaldehyde (ug/ml) |
|--|----------------------|----------------------|------------------|-----------------|-------------------------|------------------------|----------------------|-----------------------------|----------------------|-----------------------|------------------------|---------------------|
| Sample ID | 130660-63302 | | | | | | | | | | | |
| Sample Concentration (ug/ml) | 0.057 | 0.045 | <RL | 0.343 | <RL | 0.249 | <RL | 0.096 | 0.027 | <RL | <RL | <RL |
| Duplicate Sample Concentration (ug/ml) | 0.059 | 0.046 | <RL | 0.352 | <RL | 0.241 | <RL | 0.104 | 0.027 | <RL | <RL | <RL |
| RPD** | 4.7 | 1.6 | NA | 2.8 | NA | 3.2 | NA | 7.6 | 2.6 | NA | NA | <RL |
| Sample ID | 130660-63304 | | | | | | | | | | | |
| Sample Concentration (ug/ml) | 0.059 | 0.058 | <RL | 0.375 | <RL | 0.181 | <RL | 0.066 | <RL | <RL | <RL | <RL |
| Duplicate Sample Concentration (ug/ml) | 0.059 | 0.057 | <RL | 0.377 | <RL | 0.179 | <RL | 0.076 | <RL | <RL | <RL | <RL |
| RPD** | 0.7 | 0.7 | NA | 0.7 | NA | 1.5 | NA | 13.6 | NA | NA | NA | <RL |

** Must be ≤ 20%
 <RL=less than the Reporting Limit
 ND = Not Detected
 NA=Not Applicable


 Marcus Hueppe
 Laboratory Director



Atmospheric Analysis & Consulting, Inc.

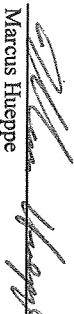
Quality Control/Quality Assurance Report TO-11A System and Method Blank Analysis

Analysis Date : 06/10/2013
Analyst : HP/EG

Instrument ID : HPLC 01

| Analyte | Formaldehyde (ug/ml) | Acetaldehyde (ug/ml) | Acrolein (ug/ml) | Acetone (ug/ml) | Propionaldehyde (ug/ml) | Crabappledehyde (ug/ml) | Methacrolein (ug/ml) | MEK & Butyraldehyde (ug/ml) | Benzaldehyde (ug/ml) | Valeraldehyde (ug/ml) | m-Tolualdehyde (ug/ml) | Hexaldehyde (ug/ml) |
|-------------------------------|----------------------|----------------------|------------------|-----------------|-------------------------|-------------------------|----------------------|-----------------------------|----------------------|-----------------------|------------------------|---------------------|
| Opening Acetonitrile Blank | <RL | <RL | <RL | <RL | <RL | <RL | <RL | <RL | <RL | <RL | <RL | <RL |
| Method Blank | <RL | <RL | <RL | <RL | <RL | <RL | <RL | <RL | <RL | <RL | <RL | <RL |
| Continuing Acetonitrile Blank | <RL | <RL | <RL | <RL | <RL | <RL | <RL | <RL | <RL | <RL | <RL | <RL |
| Closing Acetonitrile Blank | <RL | <RL | <RL | <RL | <RL | <RL | <RL | <RL | <RL | <RL | <RL | <RL |
| Reporting Limit | 0.025 | 0.025 | 0.025 | 0.025 | 0.025 | 0.025 | 0.025 | 0.025 | 0.025 | 0.025 | 0.025 | 0.025 |

RL = Reporting Limit
<RL = less than the Reporting Limit


Marcus Hueppe
Laboratory Director

Calibration Summary

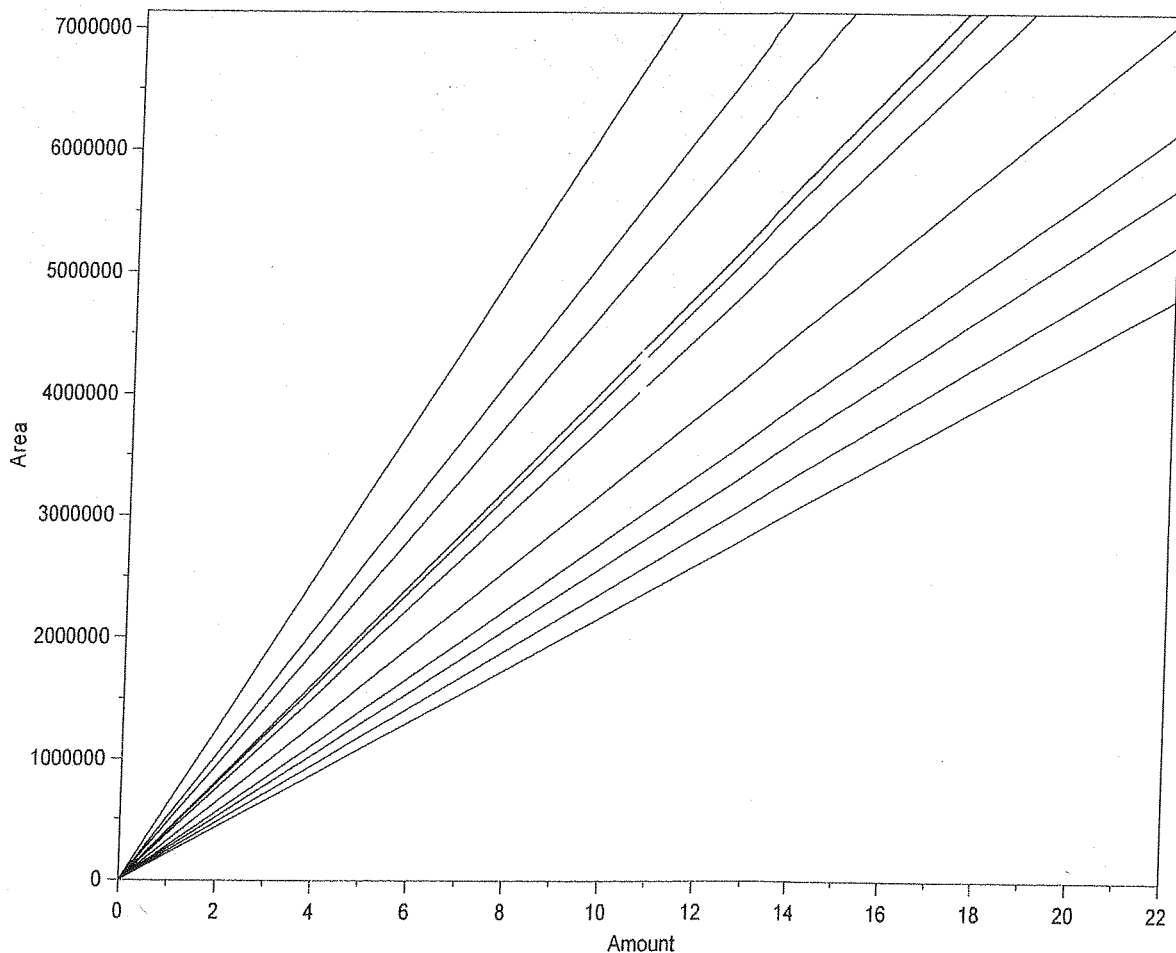
File Name: C:\CP Methods & Sequences\#1 HPLC #1\2013\011613 TO-11A.CAL
Version: 13

Creator: EG/HP
Description: EPA TO-11

External standard calibration
No injection volume correction
No sample weight correction
Area reject threshold: 1000
Reference peak area reject threshold: 1000
Amount units: ug/ml
No default component

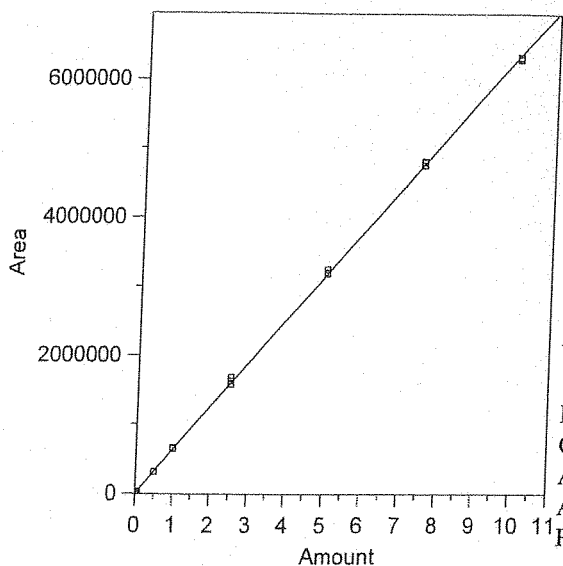
Method of calculating data point averages: Equal weight for all updates
No calibration update report

All levels are normal data points.



1 Formaldehyde
Expected retention time: 2.668 minutes
Search window: 0.1 minutes
No retention time reference component
Group number: 0
High alarm limit: 0

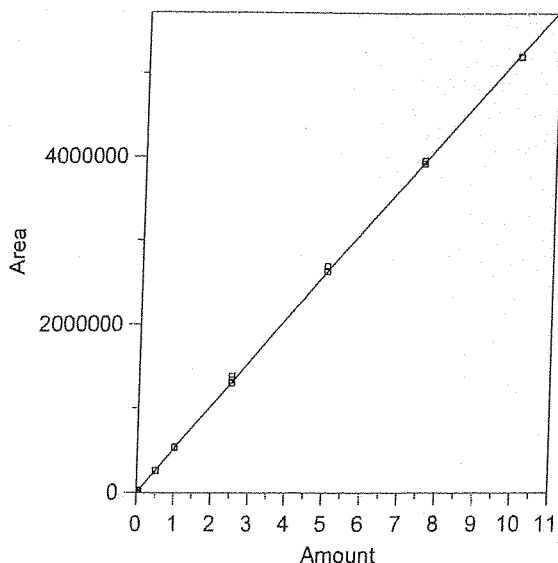
1 Formaldehyde



Expected retention time: 2.668 minutes
 Search window: 0.1 minutes
 No retention time reference component
 Group number: 0
 High alarm limit: 0
 Low alarm limit: 0
 Component constant: 0
 Single peak quantification by area
 $Y = 635498.8 X + 0$
 Linear fit with equal weighting, forced to origin
 Coefficient of determination: 0.9998119
 Average error: 2.277%
 Average CF: 646538.3
 RSD: 2.426%

| Level | Amount | Response | Cal Factor | Error, % | Source | Date and time |
|-------|--------|----------|------------|----------|---|-----------------------|
| 1 | 0.005 | 3319.347 | 663869.4 | 4.464 | CACP Data#1 HPLC #1\2013\011613\011613.0002.BND | 1/17/2013 12:07:44 PM |
| 2 | 0.005 | 3370.723 | 674144.6 | 6.081 | CACP Data#1 HPLC #1\2013\011613\011613.0003.BND | 1/17/2013 12:01:00 PM |
| 3 | 0.005 | 3248.552 | 649710.4 | 2.236 | CACP Data#1 HPLC #1\2013\011613\011613.0004.BND | 1/17/2013 12:01:16 PM |
| 4 | 0.025 | 16006.42 | 640256.8 | 0.749 | CACP Data#1 HPLC #1\2013\011613\011613.0005.BND | 1/17/2013 9:14:58 AM |
| 5 | 0.025 | 16354.98 | 654199.2 | 2.943 | CACP Data#1 HPLC #1\2013\011613\011613.0006.BND | 1/17/2013 9:15:29 AM |
| 6 | 0.025 | 16366.92 | 654676.8 | 3.018 | CACP Data#1 HPLC #1\2013\011613\011613.0007.BND | 1/17/2013 9:16:11 AM |
| 7 | 0.05 | 32105.94 | 642118.8 | 1.042 | CACP Data#1 HPLC #1\2013\011613\011613.0008.BND | 1/17/2013 9:16:31 AM |
| 8 | 0.05 | 33903.62 | 678072.4 | 6.699 | CACP Data#1 HPLC #1\2013\011613\011613.0009.BND | 1/17/2013 9:16:54 AM |
| 9 | 0.05 | 33799.1 | 675982 | 6.370 | CACP Data#1 HPLC #1\2013\011613\011613.0010.BND | 1/17/2013 9:17:32 AM |
| 10 | 0.5 | 315170.2 | 630340.4 | -0.812 | CACP Data#1 HPLC #1\2013\011613\011613.0011.BND | 1/17/2013 9:17:53 AM |
| 11 | 0.5 | 313531.4 | 627062.8 | -1.327 | CACP Data#1 HPLC #1\2013\011613\011613.0012.BND | 1/17/2013 9:18:18 AM |
| 12 | 0.5 | 311779 | 623558 | -1.879 | CACP Data#1 HPLC #1\2013\011613\011613.0013.BND | 1/17/2013 9:18:37 AM |
| 13 | 1 | 657848.8 | 657848.8 | 3.517 | CACP Data#1 HPLC #1\2013\011613\011613.0014.BND | 1/17/2013 9:18:57 AM |
| 14 | 1 | 645232.1 | 645232.1 | 1.532 | CACP Data#1 HPLC #1\2013\011613\011613.0015.BND | 1/17/2013 9:19:16 AM |
| 15 | 1 | 655379.7 | 655379.7 | 3.128 | CACP Data#1 HPLC #1\2013\011613\011613.0016.BND | 1/17/2013 9:19:35 AM |
| 16 | 2.5 | 1573829 | 629531.6 | -0.939 | CACP Data#1 HPLC #1\2013\011613\011613.0017.BND | 1/17/2013 9:19:53 AM |
| 17 | 2.5 | 1620797 | 648318.8 | 2.017 | CACP Data#1 HPLC #1\2013\011613\011613.0018.BND | 1/17/2013 9:20:27 AM |
| 18 | 2.5 | 1673874 | 669549.6 | 5.358 | CACP Data#1 HPLC #1\2013\011613\011613.0019.BND | 1/17/2013 9:20:50 AM |
| 19 | 5 | 3188477 | 637695.4 | 0.346 | CACP Data#1 HPLC #1\2013\011613\011613.0020.BND | 1/17/2013 9:21:10 AM |
| 20 | 5 | 3204251 | 640850.2 | 0.842 | CACP Data#1 HPLC #1\2013\011613\011613.0021.BND | 1/17/2013 9:21:33 AM |
| 21 | 5 | 3251028 | 650205.6 | 2.314 | CACP Data#1 HPLC #1\2013\011613\011613.0033.BND | 1/17/2013 9:22:52 AM |
| 22 | 7.5 | 4808576 | 641143.4 | 0.888 | CACP Data#1 HPLC #1\2013\011613\011613.0023.BND | 1/17/2013 9:23:16 AM |
| 23 | 7.5 | 4753309 | 633774.6 | -0.271 | CACP Data#1 HPLC #1\2013\011613\011613.0024.BND | 1/17/2013 9:23:45 AM |
| 24 | 7.5 | 4797090 | 639612 | 0.647 | CACP Data#1 HPLC #1\2013\011613\011613.0025.BND | 1/17/2013 9:24:04 AM |
| 25 | 10 | 6314019 | 631401.9 | -0.645 | CACP Data#1 HPLC #1\2013\011613\011613.0026.BND | 1/17/2013 9:24:23 AM |
| 26 | 10 | 6326623 | 632662.3 | -0.446 | CACP Data#1 HPLC #1\2013\011613\011613.0027.BND | 1/17/2013 9:24:44 AM |
| 27 | 10 | 6293350 | 629335 | -0.970 | CACP Data#1 HPLC #1\2013\011613\011613.0028.BND | 1/17/2013 9:25:02 AM |

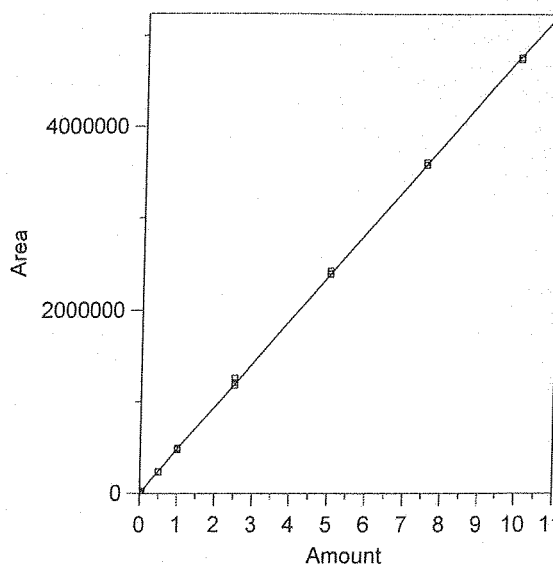
2 Acetaldehyde



Expected retention time: 3.257 minutes
 Search window: 0.3 minutes
 No retention time reference component
 Group number: 0
 High alarm limit: 0
 Low alarm limit: 0
 Component constant: 0
 Single peak quantification by area
 Y = 523848.9 X + 0
 Linear fit with equal weighting, forced to origin
 Coefficient of determination: 0.9998139
 Average error: 2.531%
 Average CF: 534292.2
 RSD: 2.711%

| Level | Amount | Response | Cal Factor | Error, % | Source | Date and time |
|-------|--------|----------|------------|----------|---|-----------------------|
| 1 | 0.005 | 2745.296 | 549059.2 | 4.813 | CACP Data#1 HPLC #1\2013\011613\011613.0002.BND | 1/17/2013 12:07:44 PM |
| 2 | 0.005 | 2776.359 | 555271.8 | 5.998 | CACP Data#1 HPLC #1\2013\011613\011613.0003.BND | 1/17/2013 12:01:00 PM |
| 3 | 0.005 | 2703.649 | 540729.8 | 3.222 | CACP Data#1 HPLC #1\2013\011613\011613.0004.BND | 1/17/2013 12:01:16 PM |
| 4 | 0.025 | 13497.82 | 539912.8 | 3.067 | CACP Data#1 HPLC #1\2013\011613\011613.0005.BND | 1/17/2013 9:14:58 AM |
| 5 | 0.025 | 13515.47 | 540618.8 | 3.201 | CACP Data#1 HPLC #1\2013\011613\011613.0006.BND | 1/17/2013 9:15:29 AM |
| 6 | 0.025 | 14104.01 | 564160.4 | 7.695 | CACP Data#1 HPLC #1\2013\011613\011613.0007.BND | 1/17/2013 9:16:11 AM |
| 7 | 0.05 | 26300.05 | 526001 | 0.411 | CACP Data#1 HPLC #1\2013\011613\011613.0008.BND | 1/17/2013 9:16:31 AM |
| 8 | 0.05 | 27932.75 | 558655 | 6.644 | CACP Data#1 HPLC #1\2013\011613\011613.0009.BND | 1/17/2013 9:16:54 AM |
| 9 | 0.05 | 27879.66 | 557593.2 | 6.442 | CACP Data#1 HPLC #1\2013\011613\011613.0010.BND | 1/17/2013 9:17:32 AM |
| 10 | 0.5 | 259874.6 | 519749.2 | -0.783 | CACP Data#1 HPLC #1\2013\011613\011613.0011.BND | 1/17/2013 9:17:53 AM |
| 11 | 0.5 | 258633.5 | 517267 | -1.256 | CACP Data#1 HPLC #1\2013\011613\011613.0012.BND | 1/17/2013 9:18:18 AM |
| 12 | 0.5 | 256621.7 | 513243.4 | -2.025 | CACP Data#1 HPLC #1\2013\011613\011613.0013.BND | 1/17/2013 9:18:37 AM |
| 13 | 1 | 540890.6 | 540890.6 | 3.253 | CACP Data#1 HPLC #1\2013\011613\011613.0014.BND | 1/17/2013 9:18:57 AM |
| 14 | 1 | 530744.3 | 530744.3 | 1.316 | CACP Data#1 HPLC #1\2013\011613\011613.0015.BND | 1/17/2013 9:19:16 AM |
| 15 | 1 | 538459.7 | 538459.7 | 2.789 | CACP Data#1 HPLC #1\2013\011613\011613.0016.BND | 1/17/2013 9:19:35 AM |
| 16 | 2.5 | 1295813 | 518325.2 | -1.054 | CACP Data#1 HPLC #1\2013\011613\011613.0017.BND | 1/17/2013 9:19:53 AM |
| 17 | 2.5 | 1335265 | 534106 | 1.958 | CACP Data#1 HPLC #1\2013\011613\011613.0018.BND | 1/17/2013 9:20:27 AM |
| 18 | 2.5 | 1382832 | 553132.8 | 5.590 | CACP Data#1 HPLC #1\2013\011613\011613.0019.BND | 1/17/2013 9:20:50 AM |
| 19 | 5 | 2624115 | 524823 | 0.186 | CACP Data#1 HPLC #1\2013\011613\011613.0020.BND | 1/17/2013 9:21:10 AM |
| 20 | 5 | 2633835 | 526767 | 0.557 | CACP Data#1 HPLC #1\2013\011613\011613.0021.BND | 1/17/2013 9:21:33 AM |
| 21 | 5 | 2686124 | 537224.8 | 2.553 | CACP Data#1 HPLC #1\2013\011613\011613.0033.BND | 1/17/2013 9:22:52 AM |
| 22 | 7.5 | 3950260 | 526701.3 | 0.545 | CACP Data#1 HPLC #1\2013\011613\011613.0023.BND | 1/17/2013 9:23:16 AM |
| 23 | 7.5 | 3923232 | 523097.6 | -0.143 | CACP Data#1 HPLC #1\2013\011613\011613.0024.BND | 1/17/2013 9:23:45 AM |
| 24 | 7.5 | 3961766 | 528235.4 | 0.837 | CACP Data#1 HPLC #1\2013\011613\011613.0025.BND | 1/17/2013 9:24:04 AM |
| 25 | 10 | 5206756 | 520675.6 | -0.606 | CACP Data#1 HPLC #1\2013\011613\011613.0026.BND | 1/17/2013 9:24:23 AM |
| 26 | 10 | 5208438 | 520843.8 | -0.574 | CACP Data#1 HPLC #1\2013\011613\011613.0027.BND | 1/17/2013 9:24:44 AM |
| 27 | 10 | 5196004 | 519600.4 | -0.811 | CACP Data#1 HPLC #1\2013\011613\011613.0028.BND | 1/17/2013 9:25:02 AM |

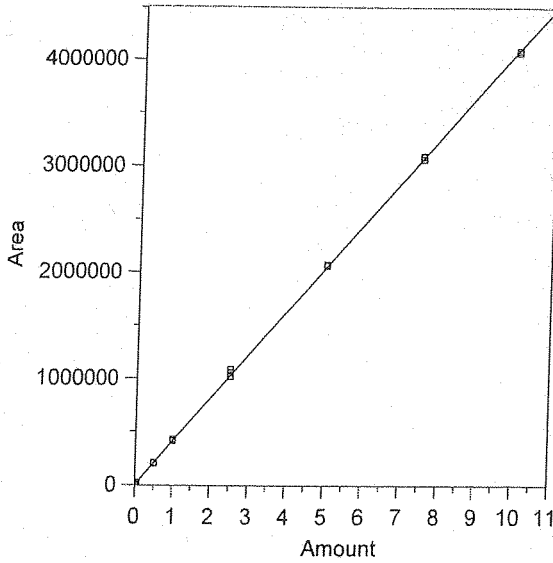
3 Acrolein



Expected retention time: 3.943 minutes
 Search window: 0.2 minutes
 No retention time reference component
 Group number: 0
 High alarm limit: 0
 Low alarm limit: 0
 Component constant: 0
 Single peak quantification by area
 Y = 477513.6 X + 0
 Linear fit with equal weighting, forced to origin
 Coefficient of determination: 0.9998558
 Average error: 1.593%
 Average CF: 479383.3
 RSD: 2.006%

| Level | Amount | Response | Cal Factor | Error, % | Source | Date and time |
|-------|--------|----------|------------|----------|---|-----------------------|
| 1 | 0.005 | 2415.335 | 483067 | 1.163 | CACP Data#1 HPLC #1\2013\011613\011613.0002.BND | 1/17/2013 12:07:44 PM |
| 2 | 0.005 | 2359.939 | 471987.8 | -1.157 | CACP Data#1 HPLC #1\2013\011613\011613.0003.BND | 1/17/2013 12:01:00 PM |
| 3 | 0.005 | 2341.276 | 468255.2 | -1.939 | CACP Data#1 HPLC #1\2013\011613\011613.0004.BND | 1/17/2013 12:01:16 PM |
| 4 | 0.025 | 12230.26 | 489210.4 | 2.450 | CACP Data#1 HPLC #1\2013\011613\011613.0005.BND | 1/17/2013 9:14:58 AM |
| 5 | 0.025 | 11731.43 | 469257.2 | -1.729 | CACP Data#1 HPLC #1\2013\011613\011613.0006.BND | 1/17/2013 9:15:29 AM |
| 6 | 0.025 | 12013.16 | 480526.4 | 0.631 | CACP Data#1 HPLC #1\2013\011613\011613.0007.BND | 1/17/2013 9:16:11 AM |
| 7 | 0.05 | 23533.81 | 470676.2 | -1.432 | CACP Data#1 HPLC #1\2013\011613\011613.0008.BND | 1/17/2013 9:16:31 AM |
| 8 | 0.05 | 24849.35 | 496987 | 4.078 | CACP Data#1 HPLC #1\2013\011613\011613.0009.BND | 1/17/2013 9:16:54 AM |
| 9 | 0.05 | 24508.45 | 490169 | 2.650 | CACP Data#1 HPLC #1\2013\011613\011613.0010.BND | 1/17/2013 9:17:32 AM |
| 10 | 0.5 | 234643.4 | 469286.8 | -1.723 | CACP Data#1 HPLC #1\2013\011613\011613.0011.BND | 1/17/2013 9:17:53 AM |
| 11 | 0.5 | 235366 | 470732 | -1.420 | CACP Data#1 HPLC #1\2013\011613\011613.0012.BND | 1/17/2013 9:18:18 AM |
| 12 | 0.5 | 231717.2 | 463434.4 | -2.948 | CACP Data#1 HPLC #1\2013\011613\011613.0013.BND | 1/17/2013 9:18:37 AM |
| 13 | 1 | 492637.6 | 492637.6 | 3.167 | CACP Data#1 HPLC #1\2013\011613\011613.0014.BND | 1/17/2013 9:18:57 AM |
| 14 | 1 | 473624.6 | 473624.6 | -0.814 | CACP Data#1 HPLC #1\2013\011613\011613.0015.BND | 1/17/2013 9:19:16 AM |
| 15 | 1 | 486674.4 | 486674.4 | 1.918 | CACP Data#1 HPLC #1\2013\011613\011613.0016.BND | 1/17/2013 9:19:35 AM |
| 16 | 2.5 | 1178759 | 471503.6 | -1.259 | CACP Data#1 HPLC #1\2013\011613\011613.0017.BND | 1/17/2013 9:19:53 AM |
| 17 | 2.5 | 1212454 | 484981.6 | 1.564 | CACP Data#1 HPLC #1\2013\011613\011613.0018.BND | 1/17/2013 9:20:27 AM |
| 18 | 2.5 | 1260575 | 504230 | 5.595 | CACP Data#1 HPLC #1\2013\011613\011613.0019.BND | 1/17/2013 9:20:50 AM |
| 19 | 5 | 2391359 | 478271.8 | 0.159 | CACP Data#1 HPLC #1\2013\011613\011613.0020.BND | 1/17/2013 9:21:10 AM |
| 20 | 5 | 2397531 | 479506.2 | 0.417 | CACP Data#1 HPLC #1\2013\011613\011613.0021.BND | 1/17/2013 9:21:33 AM |
| 21 | 5 | 2423446 | 484689.2 | 1.503 | CACP Data#1 HPLC #1\2013\011613\011613.0022.BND | 1/17/2013 9:22:52 AM |
| 22 | 7.5 | 3608190 | 481092 | 0.749 | CACP Data#1 HPLC #1\2013\011613\011613.0023.BND | 1/17/2013 9:23:16 AM |
| 23 | 7.5 | 3578272 | 477102.9 | -0.086 | CACP Data#1 HPLC #1\2013\011613\011613.0024.BND | 1/17/2013 9:23:45 AM |
| 24 | 7.5 | 3607869 | 481049.2 | 0.740 | CACP Data#1 HPLC #1\2013\011613\011613.0025.BND | 1/17/2013 9:24:04 AM |
| 25 | 10 | 4739617 | 473961.7 | -0.744 | CACP Data#1 HPLC #1\2013\011613\011613.0026.BND | 1/17/2013 9:24:23 AM |
| 26 | 10 | 4740989 | 474098.9 | -0.715 | CACP Data#1 HPLC #1\2013\011613\011613.0027.BND | 1/17/2013 9:24:44 AM |
| 27 | 10 | 4763349 | 476334.9 | -0.247 | CACP Data#1 HPLC #1\2013\011613\011613.0028.BND | 1/17/2013 9:25:02 AM |

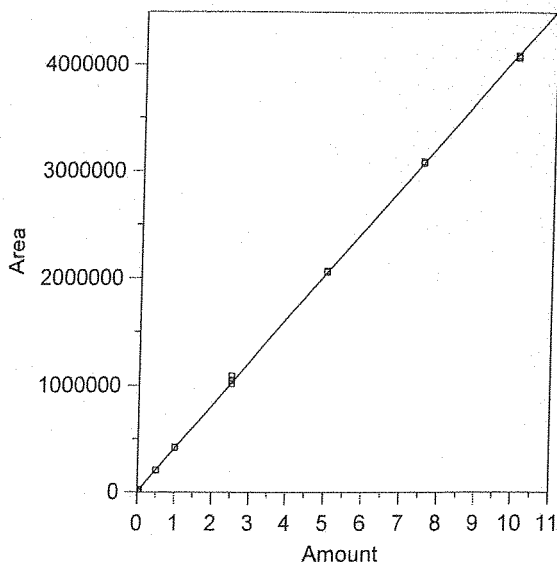
4 Acetone



Expected retention time: 4.132 minutes
 Search window: 0.4 minutes
 No retention time reference component
 Group number: 0
 High alarm limit: 0
 Low alarm limit: 0
 Component constant: 0
 Single peak quantification by area
 $Y = 413240.1 X + 0$
 Linear fit with equal weighting, forced to origin
 Coefficient of determination: 0.999868
 Average error: 2.733%
 Average CF: 420186.8
 RSD: 2.868%

| Level | Amount | Response | Cal Factor | Error, % | Source | Date and time |
|-------|--------|----------|------------|----------|---|-----------------------|
| 1 | 0.005 | 2183.345 | 436669 | 6.442 | CACP Data#1 HPLC #1\2013\011613\011613.0002.BND | 1/17/2013 12:07:44 PM |
| 2 | 0.005 | 2162.857 | 432571.4 | 5.443 | CACP Data#1 HPLC #1\2013\011613\011613.0003.BND | 1/17/2013 12:01:00 PM |
| 3 | 0.005 | 2166.039 | 433207.8 | 5.599 | CACP Data#1 HPLC #1\2013\011613\011613.0004.BND | 1/17/2013 12:01:16 PM |
| 4 | 0.025 | 10593.84 | 423753.6 | 3.294 | CACP Data#1 HPLC #1\2013\011613\011613.0005.BND | 1/17/2013 9:14:58 AM |
| 5 | 0.025 | 11158.68 | 446347.2 | 8.801 | CACP Data#1 HPLC #1\2013\011613\011613.0006.BND | 1/17/2013 9:15:29 AM |
| 6 | 0.025 | 10863.23 | 434529.2 | 5.921 | CACP Data#1 HPLC #1\2013\011613\011613.0007.BND | 1/17/2013 9:16:11 AM |
| 7 | 0.05 | 20778.5 | 415570 | 1.299 | CACP Data#1 HPLC #1\2013\011613\011613.0008.BND | 1/17/2013 9:16:31 AM |
| 8 | 0.05 | 22119.85 | 442397 | 7.839 | CACP Data#1 HPLC #1\2013\011613\011613.0009.BND | 1/17/2013 9:16:54 AM |
| 9 | 0.05 | 21561.34 | 431226.8 | 5.116 | CACP Data#1 HPLC #1\2013\011613\011613.0010.BND | 1/17/2013 9:17:32 AM |
| 10 | 0.5 | 206884.7 | 413769.4 | 0.860 | CACP Data#1 HPLC #1\2013\011613\011613.0011.BND | 1/17/2013 9:17:53 AM |
| 11 | 0.5 | 202801.7 | 405603.4 | -1.130 | CACP Data#1 HPLC #1\2013\011613\011613.0012.BND | 1/17/2013 9:18:18 AM |
| 12 | 0.5 | 204367.4 | 408734.8 | -0.367 | CACP Data#1 HPLC #1\2013\011613\011613.0013.BND | 1/17/2013 9:18:37 AM |
| 13 | 1 | 423714.7 | 423714.7 | 3.285 | CACP Data#1 HPLC #1\2013\011613\011613.0014.BND | 1/17/2013 9:18:57 AM |
| 14 | 1 | 413611.8 | 413611.8 | 0.822 | CACP Data#1 HPLC #1\2013\011613\011613.0015.BND | 1/17/2013 9:19:16 AM |
| 15 | 1 | 424962.7 | 424962.7 | 3.589 | CACP Data#1 HPLC #1\2013\011613\011613.0016.BND | 1/17/2013 9:19:35 AM |
| 16 | 2.5 | 101706.9 | 406827.6 | -0.832 | CACP Data#1 HPLC #1\2013\011613\011613.0017.BND | 1/17/2013 9:19:53 AM |
| 17 | 2.5 | 105247.1 | 420988.4 | 2.620 | CACP Data#1 HPLC #1\2013\011613\011613.0018.BND | 1/17/2013 9:20:27 AM |
| 18 | 2.5 | 108227.7 | 432910.8 | 5.526 | CACP Data#1 HPLC #1\2013\011613\011613.0019.BND | 1/17/2013 9:20:50 AM |
| 19 | 5 | 205997.8 | 411995.6 | 0.428 | CACP Data#1 HPLC #1\2013\011613\011613.0020.BND | 1/17/2013 9:21:10 AM |
| 20 | 5 | 206199.8 | 412399.6 | 0.526 | CACP Data#1 HPLC #1\2013\011613\011613.0021.BND | 1/17/2013 9:21:33 AM |
| 21 | 5 | 207428.1 | 414856.2 | 1.125 | CACP Data#1 HPLC #1\2013\011613\011613.0022.BND | 1/17/2013 9:22:52 AM |
| 22 | 7.5 | 309054.4 | 412072.5 | 0.447 | CACP Data#1 HPLC #1\2013\011613\011613.0023.BND | 1/17/2013 9:23:16 AM |
| 23 | 7.5 | 306523.1 | 408697.5 | -0.376 | CACP Data#1 HPLC #1\2013\011613\011613.0024.BND | 1/17/2013 9:23:45 AM |
| 24 | 7.5 | 309651.1 | 412868.1 | 0.641 | CACP Data#1 HPLC #1\2013\011613\011613.0025.BND | 1/17/2013 9:24:04 AM |
| 25 | 10 | 407536.8 | 407536.8 | -0.659 | CACP Data#1 HPLC #1\2013\011613\011613.0026.BND | 1/17/2013 9:24:23 AM |
| 26 | 10 | 409560.6 | 409560.6 | -0.166 | CACP Data#1 HPLC #1\2013\011613\011613.0027.BND | 1/17/2013 9:24:44 AM |
| 27 | 10 | 407662.4 | 407662.4 | -0.628 | CACP Data#1 HPLC #1\2013\011613\011613.0028.BND | 1/17/2013 9:25:02 AM |

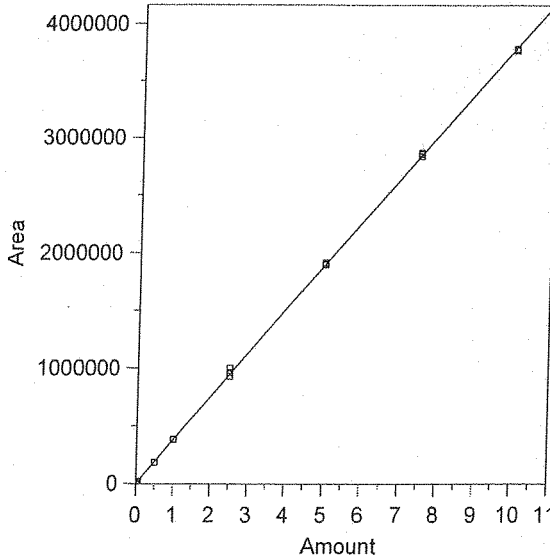
5 Propionaldehyde



Expected retention time: 4.392 minutes
 Search window: 0.5 minutes
 No retention time reference component
 Group number: 0
 High alarm limit: 0
 Low alarm limit: 0
 Component constant: 0
 Single peak quantification by area
 Y = 409729.4 X + 0
 Linear fit with equal weighting, forced to origin
 Coefficient of determination: 0.9998541
 Average error: 2.076%
 Average CF: 414811.5
 RSD: 2.614%

| Level | Amount | Response | Cal Factor | Error, % | Source | Date and time |
|-------|--------|----------|------------|----------|---|-----------------------|
| 1 | 0.005 | 1972.789 | 394557.8 | -3.703 | CACP Data#1 HPLC #1\2013\011613\011613.0002.BND | 1/17/2013 12:07:44 PM |
| 2 | 0.005 | 1996.396 | 399279.2 | -2.551 | CACP Data#1 HPLC #1\2013\011613\011613.0003.BND | 1/17/2013 12:01:00 PM |
| 3 | 0.005 | 2036.421 | 407284.2 | -0.597 | CACP Data#1 HPLC #1\2013\011613\011613.0004.BND | 1/17/2013 12:01:16 PM |
| 4 | 0.025 | 10616.59 | 424663.6 | 3.645 | CACP Data#1 HPLC #1\2013\011613\011613.0005.BND | 1/17/2013 9:14:58 AM |
| 5 | 0.025 | 10751.91 | 430076.4 | 4.966 | CACP Data#1 HPLC #1\2013\011613\011613.0006.BND | 1/17/2013 9:15:29 AM |
| 6 | 0.025 | 10655.2 | 426208 | 4.022 | CACP Data#1 HPLC #1\2013\011613\011613.0007.BND | 1/17/2013 9:16:11 AM |
| 7 | 0.05 | 20828.86 | 416577.2 | 1.671 | CACP Data#1 HPLC #1\2013\011613\011613.0008.BND | 1/17/2013 9:16:31 AM |
| 8 | 0.05 | 22022.53 | 440450.6 | 7.498 | CACP Data#1 HPLC #1\2013\011613\011613.0009.BND | 1/17/2013 9:16:54 AM |
| 9 | 0.05 | 21487.62 | 429752.4 | 4.887 | CACP Data#1 HPLC #1\2013\011613\011613.0010.BND | 1/17/2013 9:17:32 AM |
| 10 | 0.5 | 203755.9 | 407511.8 | -0.541 | CACP Data#1 HPLC #1\2013\011613\011613.0011.BND | 1/17/2013 9:17:53 AM |
| 11 | 0.5 | 204614.9 | 409229.8 | -0.122 | CACP Data#1 HPLC #1\2013\011613\011613.0012.BND | 1/17/2013 9:18:18 AM |
| 12 | 0.5 | 202760.2 | 405520.4 | -1.027 | CACP Data#1 HPLC #1\2013\011613\011613.0013.BND | 1/17/2013 9:18:37 AM |
| 13 | 1 | 422491.5 | 422491.5 | 3.115 | CACP Data#1 HPLC #1\2013\011613\011613.0014.BND | 1/17/2013 9:18:57 AM |
| 14 | 1 | 414054.3 | 414054.3 | 1.056 | CACP Data#1 HPLC #1\2013\011613\011613.0015.BND | 1/17/2013 9:19:16 AM |
| 15 | 1 | 418737.7 | 418737.7 | 2.199 | CACP Data#1 HPLC #1\2013\011613\011613.0016.BND | 1/17/2013 9:19:35 AM |
| 16 | 2.5 | 1013506 | 405402.4 | -1.056 | CACP Data#1 HPLC #1\2013\011613\011613.0017.BND | 1/17/2013 9:19:53 AM |
| 17 | 2.5 | 1049219 | 419687.6 | 2.430 | CACP Data#1 HPLC #1\2013\011613\011613.0018.BND | 1/17/2013 9:20:27 AM |
| 18 | 2.5 | 1088355 | 435342 | 6.251 | CACP Data#1 HPLC #1\2013\011613\011613.0019.BND | 1/17/2013 9:20:50 AM |
| 19 | 5 | 2055268 | 411053.6 | 0.323 | CACP Data#1 HPLC #1\2013\011613\011613.0020.BND | 1/17/2013 9:21:10 AM |
| 20 | 5 | 2059857 | 411971.4 | 0.547 | CACP Data#1 HPLC #1\2013\011613\011613.0021.BND | 1/17/2013 9:21:33 AM |
| 21 | 5 | 2067409 | 413481.8 | 0.916 | CACP Data#1 HPLC #1\2013\011613\011613.0033.BND | 1/17/2013 9:22:52 AM |
| 22 | 7.5 | 3090514 | 412068.5 | 0.571 | CACP Data#1 HPLC #1\2013\011613\011613.0023.BND | 1/17/2013 9:23:16 AM |
| 23 | 7.5 | 3078345 | 410446 | 0.175 | CACP Data#1 HPLC #1\2013\011613\011613.0024.BND | 1/17/2013 9:23:45 AM |
| 24 | 7.5 | 3088245 | 411766 | 0.497 | CACP Data#1 HPLC #1\2013\011613\011613.0025.BND | 1/17/2013 9:24:04 AM |
| 25 | 10 | 4063636 | 406363.6 | -0.821 | CACP Data#1 HPLC #1\2013\011613\011613.0026.BND | 1/17/2013 9:24:23 AM |
| 26 | 10 | 4072347 | 407234.7 | -0.609 | CACP Data#1 HPLC #1\2013\011613\011613.0027.BND | 1/17/2013 9:24:44 AM |
| 27 | 10 | 4086977 | 408697.7 | -0.252 | CACP Data#1 HPLC #1\2013\011613\011613.0028.BND | 1/17/2013 9:25:02 AM |

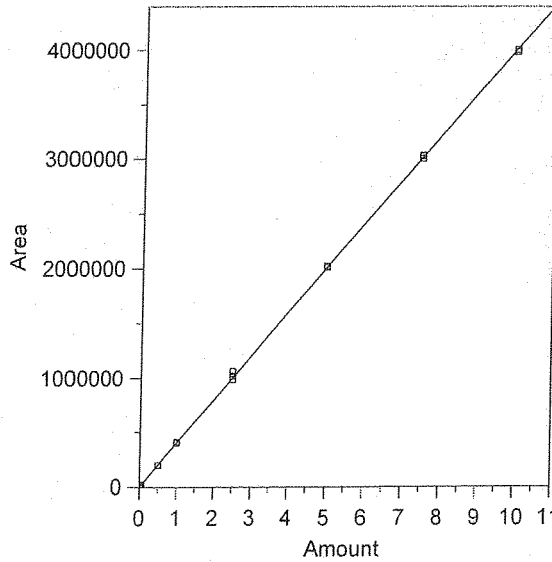
6 Crotonaldehyde



Expected retention time: 5.161 minutes
 Search window: 0.5 minutes
 No retention time reference component
 Group number: 0
 High alarm limit: 0
 Low alarm limit: 0
 Component constant: 0
 Single peak quantification by area
 $Y = 379197.3 X + 0$
 Linear fit with equal weighting, forced to origin
 Coefficient of determination: 0.9998879
 Average error: 2.055%
 Average CF: 377240.3
 RSD: 2.954%

| Level | Amount | Response | Cal Factor | Error, % | Source | Date and time |
|-------|--------|----------|------------|----------|---|-----------------------|
| 1 | 0.005 | 1763.188 | 352637.6 | -7.004 | C:\CP Data\#1 HPLC #1\2013\011613\011613.0002.BND | 1/17/2013 12:07:44 PM |
| 2 | 0.005 | 1769.861 | 353972.2 | -6.652 | C:\CP Data\#1 HPLC #1\2013\011613\011613.0003.BND | 1/17/2013 12:01:00 PM |
| 3 | 0.005 | 1774.771 | 354954.2 | -6.393 | C:\CP Data\#1 HPLC #1\2013\011613\011613.0004.BND | 1/17/2013 12:01:16 PM |
| 4 | 0.025 | 9632.542 | 385301.7 | 1.610 | C:\CP Data\#1 HPLC #1\2013\011613\011613.0005.BND | 1/17/2013 9:14:58 AM |
| 5 | 0.025 | 9590.598 | 383623.9 | 1.167 | C:\CP Data\#1 HPLC #1\2013\011613\011613.0006.BND | 1/17/2013 9:15:29 AM |
| 6 | 0.025 | 9482.347 | 379293.9 | 0.025 | C:\CP Data\#1 HPLC #1\2013\011613\011613.0007.BND | 1/17/2013 9:16:11 AM |
| 7 | 0.05 | 18280.8 | 365616 | -3.582 | C:\CP Data\#1 HPLC #1\2013\011613\011613.0008.BND | 1/17/2013 9:16:31 AM |
| 8 | 0.05 | 19753.15 | 395063 | 4.184 | C:\CP Data\#1 HPLC #1\2013\011613\011613.0009.BND | 1/17/2013 9:16:54 AM |
| 9 | 0.05 | 19265.63 | 385312.6 | 1.613 | C:\CP Data\#1 HPLC #1\2013\011613\011613.0010.BND | 1/17/2013 9:17:32 AM |
| 10 | 0.5 | 184891.2 | 369782.4 | -2.483 | C:\CP Data\#1 HPLC #1\2013\011613\011613.0011.BND | 1/17/2013 9:17:53 AM |
| 11 | 0.5 | 184884.5 | 369769 | -2.486 | C:\CP Data\#1 HPLC #1\2013\011613\011613.0012.BND | 1/17/2013 9:18:18 AM |
| 12 | 0.5 | 185209 | 370418 | -2.315 | C:\CP Data\#1 HPLC #1\2013\011613\011613.0013.BND | 1/17/2013 9:18:37 AM |
| 13 | 1 | 385583 | 385583 | 1.684 | C:\CP Data\#1 HPLC #1\2013\011613\011613.0014.BND | 1/17/2013 9:18:57 AM |
| 14 | 1 | 378746.3 | 378746.3 | -0.119 | C:\CP Data\#1 HPLC #1\2013\011613\011613.0015.BND | 1/17/2013 9:19:16 AM |
| 15 | 1 | 383412.3 | 383412.3 | 1.112 | C:\CP Data\#1 HPLC #1\2013\011613\011613.0016.BND | 1/17/2013 9:19:35 AM |
| 16 | 2.5 | 927177.1 | 370870.8 | -2.196 | C:\CP Data\#1 HPLC #1\2013\011613\011613.0017.BND | 1/17/2013 9:19:53 AM |
| 17 | 2.5 | 962027.6 | 384811.1 | 1.480 | C:\CP Data\#1 HPLC #1\2013\011613\011613.0018.BND | 1/17/2013 9:20:27 AM |
| 18 | 2.5 | 999406.8 | 399762.7 | 5.423 | C:\CP Data\#1 HPLC #1\2013\011613\011613.0019.BND | 1/17/2013 9:20:50 AM |
| 19 | 5 | 1894920 | 378984 | -0.056 | C:\CP Data\#1 HPLC #1\2013\011613\011613.0020.BND | 1/17/2013 9:21:10 AM |
| 20 | 5 | 1912362 | 382472.4 | 0.864 | C:\CP Data\#1 HPLC #1\2013\011613\011613.0021.BND | 1/17/2013 9:21:33 AM |
| 21 | 5 | 1900975 | 380195 | 0.263 | C:\CP Data\#1 HPLC #1\2013\011613\011613.0033.BND | 1/17/2013 9:22:52 AM |
| 22 | 7.5 | 2868305 | 382440.7 | 0.855 | C:\CP Data\#1 HPLC #1\2013\011613\011613.0023.BND | 1/17/2013 9:23:16 AM |
| 23 | 7.5 | 2837994 | 378399.2 | -0.210 | C:\CP Data\#1 HPLC #1\2013\011613\011613.0024.BND | 1/17/2013 9:23:45 AM |
| 24 | 7.5 | 2857948 | 381059.7 | 0.491 | C:\CP Data\#1 HPLC #1\2013\011613\011613.0025.BND | 1/17/2013 9:24:04 AM |
| 25 | 10 | 3777541 | 377754.1 | -0.381 | C:\CP Data\#1 HPLC #1\2013\011613\011613.0026.BND | 1/17/2013 9:24:23 AM |
| 26 | 10 | 3769081 | 376908.1 | -0.604 | C:\CP Data\#1 HPLC #1\2013\011613\011613.0027.BND | 1/17/2013 9:24:44 AM |
| 27 | 10 | 3783434 | 378343.4 | -0.225 | C:\CP Data\#1 HPLC #1\2013\011613\011613.0028.BND | 1/17/2013 9:25:02 AM |

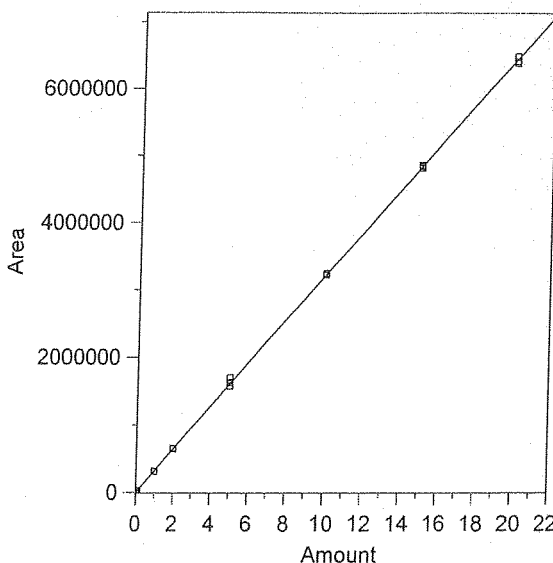
7 Methacrolein



Expected retention time: 5.502 minutes
 Search window: 0.5 minutes
 No retention time reference component
 Group number: 0
 High alarm limit: 0
 Low alarm limit: 0
 Component constant: 0
 Single peak quantification by area
 $Y = 401227.3 X + 0$
 Linear fit with equal weighting, forced to origin
 Coefficient of determination: 0.9998807
 Average error: 1.583%
 Average CF: 405093.2
 RSD: 1.942%

| Level | Amount | Response | Cal Factor | Error, % | Source | Date and time |
|-------|--------|----------|------------|----------|---|-----------------------|
| 1 | 0.005 | 1996.921 | 399384.2 | -0.459 | CACP Data#1 HPLC #1\2013\011613\011613.0002.BND | 1/17/2013 12:07:44 PM |
| 2 | 0.005 | 2026.085 | 405217 | 0.994 | CACP Data#1 HPLC #1\2013\011613\011613.0003.BND | 1/17/2013 12:01:00 PM |
| 3 | 0.005 | 2064.975 | 412995 | 2.933 | CACP Data#1 HPLC #1\2013\011613\011613.0004.BND | 1/17/2013 12:01:16 PM |
| 4 | 0.025 | 10232.26 | 409290.4 | 2.010 | CACP Data#1 HPLC #1\2013\011613\011613.0005.BND | 1/17/2013 9:14:58 AM |
| 5 | 0.025 | 10312.39 | 412495.6 | 2.808 | CACP Data#1 HPLC #1\2013\011613\011613.0006.BND | 1/17/2013 9:15:29 AM |
| 6 | 0.025 | 10222.34 | 408893.6 | 1.911 | CACP Data#1 HPLC #1\2013\011613\011613.0007.BND | 1/17/2013 9:16:11 AM |
| 7 | 0.05 | 19918.92 | 398378.4 | -0.710 | CACP Data#1 HPLC #1\2013\011613\011613.0008.BND | 1/17/2013 9:16:31 AM |
| 8 | 0.05 | 21271.74 | 425434.8 | 6.033 | CACP Data#1 HPLC #1\2013\011613\011613.0009.BND | 1/17/2013 9:16:54 AM |
| 9 | 0.05 | 20500.99 | 410019.8 | 2.191 | CACP Data#1 HPLC #1\2013\011613\011613.0010.BND | 1/17/2013 9:17:32 AM |
| 10 | 0.5 | 197838.8 | 395677.6 | -1.383 | CACP Data#1 HPLC #1\2013\011613\011613.0011.BND | 1/17/2013 9:17:53 AM |
| 11 | 0.5 | 197555.6 | 395111.2 | -1.524 | CACP Data#1 HPLC #1\2013\011613\011613.0012.BND | 1/17/2013 9:18:18 AM |
| 12 | 0.5 | 198160.6 | 396321.2 | -1.223 | CACP Data#1 HPLC #1\2013\011613\011613.0013.BND | 1/17/2013 9:18:37 AM |
| 13 | 1 | 410566.2 | 410566.2 | 2.328 | CACP Data#1 HPLC #1\2013\011613\011613.0014.BND | 1/17/2013 9:18:57 AM |
| 14 | 1 | 403644.6 | 403644.6 | 0.602 | CACP Data#1 HPLC #1\2013\011613\011613.0015.BND | 1/17/2013 9:19:16 AM |
| 15 | 1 | 411295.8 | 411295.8 | 2.509 | CACP Data#1 HPLC #1\2013\011613\011613.0016.BND | 1/17/2013 9:19:35 AM |
| 16 | 2.5 | 988448.4 | 395379.3 | -1.458 | CACP Data#1 HPLC #1\2013\011613\011613.0017.BND | 1/17/2013 9:19:53 AM |
| 17 | 2.5 | 1020493 | 408197.2 | 1.737 | CACP Data#1 HPLC #1\2013\011613\011613.0018.BND | 1/17/2013 9:20:27 AM |
| 18 | 2.5 | 1060355 | 424142 | 5.711 | CACP Data#1 HPLC #1\2013\011613\011613.0019.BND | 1/17/2013 9:20:50 AM |
| 19 | 5 | 2012112 | 402422.4 | 0.298 | CACP Data#1 HPLC #1\2013\011613\011613.0020.BND | 1/17/2013 9:21:10 AM |
| 20 | 5 | 2012416 | 402483.2 | 0.313 | CACP Data#1 HPLC #1\2013\011613\011613.0021.BND | 1/17/2013 9:21:33 AM |
| 21 | 5 | 2019797 | 403959.4 | 0.681 | CACP Data#1 HPLC #1\2013\011613\011613.0033.BND | 1/17/2013 9:22:52 AM |
| 22 | 7.5 | 3032186 | 404291.5 | 0.764 | CACP Data#1 HPLC #1\2013\011613\011613.0023.BND | 1/17/2013 9:23:16 AM |
| 23 | 7.5 | 3000600 | 400080 | -0.286 | CACP Data#1 HPLC #1\2013\011613\011613.0024.BND | 1/17/2013 9:23:45 AM |
| 24 | 7.5 | 3026002 | 403466.9 | 0.558 | CACP Data#1 HPLC #1\2013\011613\011613.0025.BND | 1/17/2013 9:24:04 AM |
| 25 | 10 | 4001513 | 400151.3 | -0.268 | CACP Data#1 HPLC #1\2013\011613\011613.0026.BND | 1/17/2013 9:24:23 AM |
| 26 | 10 | 3982305 | 398230.5 | -0.747 | CACP Data#1 HPLC #1\2013\011613\011613.0027.BND | 1/17/2013 9:24:44 AM |
| 27 | 10 | 3999860 | 399986 | -0.309 | CACP Data#1 HPLC #1\2013\011613\011613.0028.BND | 1/17/2013 9:25:02 AM |

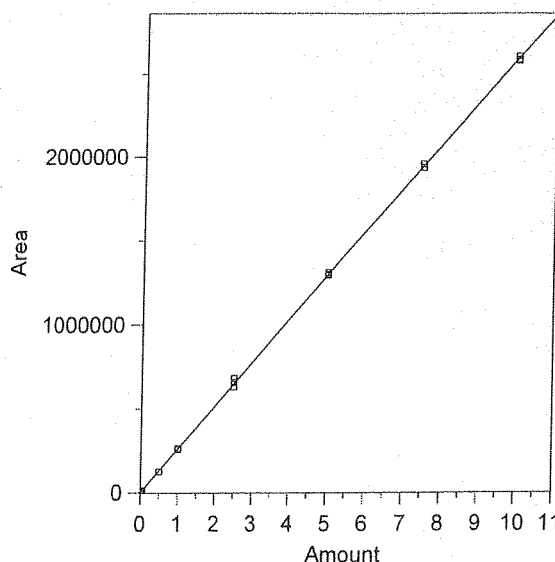
8 MEK & Butyraldehyde



Expected retention time: 5.872 minutes
 Search window: 0.5 minutes
 No retention time reference component
 Group number: 0
 High alarm limit: 0
 Low alarm limit: 0
 Component constant: 0
 Single peak quantification by area
 $Y = 322232.7 X + 0$
 Linear fit with equal weighting, forced to origin
 Coefficient of determination: 0.999867
 Average error: 2.084%
 Average CF: 327115.7
 RSD: 2.391%

| Level | Amount | Response | Cal Factor | Error, % | Source | Date and time |
|-------|--------|----------|------------|----------|---|-----------------------|
| 1 | 0.01 | 3351.753 | 335175.3 | 4.017 | CACP Data#1 HPLC #1\2013\011613\011613.0002.BND | 1/17/2013 12:07:44 PM |
| 2 | 0.01 | 3391.47 | 339147 | 5.249 | CACP Data#1 HPLC #1\2013\011613\011613.0003.BND | 1/17/2013 12:01:00 PM |
| 3 | 0.01 | 3384.082 | 338408.2 | 5.020 | CACP Data#1 HPLC #1\2013\011613\011613.0004.BND | 1/17/2013 12:01:16 PM |
| 4 | 0.05 | 16525.07 | 330501.4 | 2.566 | CACP Data#1 HPLC #1\2013\011613\011613.0005.BND | 1/17/2013 9:14:58 AM |
| 5 | 0.05 | 16528.89 | 330577.8 | 2.590 | CACP Data#1 HPLC #1\2013\011613\011613.0006.BND | 1/17/2013 9:15:29 AM |
| 6 | 0.05 | 16684.14 | 333682.8 | 3.553 | CACP Data#1 HPLC #1\2013\011613\011613.0007.BND | 1/17/2013 9:16:11 AM |
| 7 | 0.1 | 32230.04 | 322300.4 | 0.021 | CACP Data#1 HPLC #1\2013\011613\011613.0008.BND | 1/17/2013 9:16:31 AM |
| 8 | 0.1 | 34515.54 | 345155.4 | 7.114 | CACP Data#1 HPLC #1\2013\011613\011613.0009.BND | 1/17/2013 9:16:54 AM |
| 9 | 0.1 | 33411.08 | 334110.8 | 3.686 | CACP Data#1 HPLC #1\2013\011613\011613.0010.BND | 1/17/2013 9:17:32 AM |
| 10 | 1 | 317772.7 | 317772.7 | -1.384 | CACP Data#1 HPLC #1\2013\011613\011613.0011.BND | 1/17/2013 9:17:53 AM |
| 11 | 1 | 319288.8 | 319288.8 | -0.914 | CACP Data#1 HPLC #1\2013\011613\011613.0012.BND | 1/17/2013 9:18:18 AM |
| 12 | 1 | 317344.1 | 317344.1 | -1.517 | CACP Data#1 HPLC #1\2013\011613\011613.0013.BND | 1/17/2013 9:18:37 AM |
| 13 | 2 | 659698.4 | 329849.2 | 2.364 | CACP Data#1 HPLC #1\2013\011613\011613.0014.BND | 1/17/2013 9:18:57 AM |
| 14 | 2 | 648058.6 | 324029.3 | 0.558 | CACP Data#1 HPLC #1\2013\011613\011613.0015.BND | 1/17/2013 9:19:16 AM |
| 15 | 2 | 660032.3 | 330016.2 | 2.415 | CACP Data#1 HPLC #1\2013\011613\011613.0016.BND | 1/17/2013 9:19:35 AM |
| 16 | 5 | 1578239 | 315647.8 | -2.044 | CACP Data#1 HPLC #1\2013\011613\011613.0017.BND | 1/17/2013 9:19:53 AM |
| 17 | 5 | 1635369 | 327073.8 | 1.502 | CACP Data#1 HPLC #1\2013\011613\011613.0018.BND | 1/17/2013 9:20:27 AM |
| 18 | 5 | 1699770 | 339954 | 5.500 | CACP Data#1 HPLC #1\2013\011613\011613.0019.BND | 1/17/2013 9:20:50 AM |
| 19 | 10 | 3225144 | 322514.4 | 0.087 | CACP Data#1 HPLC #1\2013\011613\011613.0020.BND | 1/17/2013 9:21:10 AM |
| 20 | 10 | 3232554 | 323255.4 | 0.317 | CACP Data#1 HPLC #1\2013\011613\011613.0021.BND | 1/17/2013 9:21:33 AM |
| 21 | 10 | 3248338 | 324833.8 | 0.807 | CACP Data#1 HPLC #1\2013\011613\011613.0022.BND | 1/17/2013 9:22:52 AM |
| 22 | 15 | 4858471 | 323898.1 | 0.517 | CACP Data#1 HPLC #1\2013\011613\011613.0023.BND | 1/17/2013 9:23:16 AM |
| 23 | 15 | 4813685 | 320912.3 | -0.410 | CACP Data#1 HPLC #1\2013\011613\011613.0024.BND | 1/17/2013 9:23:45 AM |
| 24 | 15 | 4835401 | 322360.1 | 0.040 | CACP Data#1 HPLC #1\2013\011613\011613.0025.BND | 1/17/2013 9:24:04 AM |
| 25 | 20 | 6411478 | 320573.9 | -0.515 | CACP Data#1 HPLC #1\2013\011613\011613.0026.BND | 1/17/2013 9:24:23 AM |
| 26 | 20 | 6386688 | 319334.4 | -0.899 | CACP Data#1 HPLC #1\2013\011613\011613.0027.BND | 1/17/2013 9:24:44 AM |
| 27 | 20 | 6488133 | 324406.7 | 0.675 | CACP Data#1 HPLC #1\2013\011613\011613.0028.BND | 1/17/2013 9:25:02 AM |

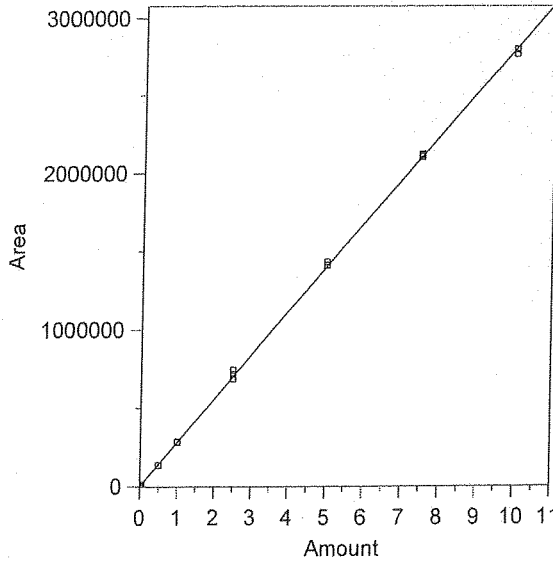
9 Benzaldehyde



Expected retention time: 6.315 minutes
 Search window: 0.5 minutes
 No retention time reference component
 Group number: 0
 High alarm limit: 0
 Low alarm limit: 0
 Component constant: 0
 Single peak quantification by area
 Y = 259532.3 X + 0
 Linear fit with equal weighting, forced to origin
 Coefficient of determination: 0.9998788
 Average error: 1.745%
 Average CF: 259316.8
 RSD: 2.653%

| Level | Amount | Response | Cal Factor | Error, % | Source | Date and time |
|-------|--------|----------|------------|----------|---|-----------------------|
| 1 | 0.005 | 1297.518 | 259503.6 | -0.011 | CACP Data#1 HPLC #1\2013\011613\011613.0002.BND | 1/17/2013 12:07:44 PM |
| 2 | 0.005 | 1262 | 252400 | -2.748 | CACP Data#1 HPLC #1\2013\011613\011613.0003.BND | 1/17/2013 12:01:00 PM |
| 3 | 0.005 | 1295.839 | 259167.8 | -0.140 | CACP Data#1 HPLC #1\2013\011613\011613.0004.BND | 1/17/2013 12:01:16 PM |
| 4 | 0.025 | 6666.208 | 266648.3 | 2.742 | CACP Data#1 HPLC #1\2013\011613\011613.0005.BND | 1/17/2013 9:14:58 AM |
| 5 | 0.025 | 7034.047 | 281361.9 | 8.411 | CACP Data#1 HPLC #1\2013\011613\011613.0006.BND | 1/17/2013 9:15:29 AM |
| 6 | 0.025 | 6534.359 | 261374.4 | 0.710 | CACP Data#1 HPLC #1\2013\011613\011613.0007.BND | 1/17/2013 9:16:11 AM |
| 7 | 0.05 | 12466.06 | 249321.2 | -3.934 | CACP Data#1 HPLC #1\2013\011613\011613.0008.BND | 1/17/2013 9:16:31 AM |
| 8 | 0.05 | 13008.72 | 260174.4 | 0.247 | CACP Data#1 HPLC #1\2013\011613\011613.0009.BND | 1/17/2013 9:16:54 AM |
| 9 | 0.05 | 12791.38 | 255827.6 | -1.427 | CACP Data#1 HPLC #1\2013\011613\011613.0010.BND | 1/17/2013 9:17:32 AM |
| 10 | 0.5 | 124939.2 | 249878.4 | -3.720 | CACP Data#1 HPLC #1\2013\011613\011613.0011.BND | 1/17/2013 9:17:53 AM |
| 11 | 0.5 | 125454.3 | 250908.6 | -3.323 | CACP Data#1 HPLC #1\2013\011613\011613.0012.BND | 1/17/2013 9:18:18 AM |
| 12 | 0.5 | 125079.6 | 250159.2 | -3.612 | CACP Data#1 HPLC #1\2013\011613\011613.0013.BND | 1/17/2013 9:18:37 AM |
| 13 | 1 | 262209.1 | 262209.1 | 1.031 | CACP Data#1 HPLC #1\2013\011613\011613.0014.BND | 1/17/2013 9:18:57 AM |
| 14 | 1 | 257536.3 | 257536.3 | -0.769 | CACP Data#1 HPLC #1\2013\011613\011613.0015.BND | 1/17/2013 9:19:16 AM |
| 15 | 1 | 260766 | 260766 | 0.475 | CACP Data#1 HPLC #1\2013\011613\011613.0016.BND | 1/17/2013 9:19:35 AM |
| 16 | 2.5 | 628872.8 | 251549.1 | -3.076 | CACP Data#1 HPLC #1\2013\011613\011613.0017.BND | 1/17/2013 9:19:53 AM |
| 17 | 2.5 | 656123.5 | 262449.4 | 1.124 | CACP Data#1 HPLC #1\2013\011613\011613.0018.BND | 1/17/2013 9:20:27 AM |
| 18 | 2.5 | 681751.6 | 272700.7 | 5.074 | CACP Data#1 HPLC #1\2013\011613\011613.0019.BND | 1/17/2013 9:20:50 AM |
| 19 | 5 | 1294694 | 258938.8 | -0.229 | CACP Data#1 HPLC #1\2013\011613\011613.0020.BND | 1/17/2013 9:21:10 AM |
| 20 | 5 | 1299522 | 259904.4 | 0.143 | CACP Data#1 HPLC #1\2013\011613\011613.0021.BND | 1/17/2013 9:21:33 AM |
| 21 | 5 | 1309382 | 261876.4 | 0.903 | CACP Data#1 HPLC #1\2013\011613\011613.0023.BND | 1/17/2013 9:22:52 AM |
| 22 | 7.5 | 1958642 | 261152.3 | 0.624 | CACP Data#1 HPLC #1\2013\011613\011613.0023.BND | 1/17/2013 9:23:16 AM |
| 23 | 7.5 | 1935214 | 258028.5 | -0.579 | CACP Data#1 HPLC #1\2013\011613\011613.0024.BND | 1/17/2013 9:23:45 AM |
| 24 | 7.5 | 1957459 | 260994.5 | 0.563 | CACP Data#1 HPLC #1\2013\011613\011613.0025.BND | 1/17/2013 9:24:04 AM |
| 25 | 10 | 2584429 | 258442.9 | -0.420 | CACP Data#1 HPLC #1\2013\011613\011613.0026.BND | 1/17/2013 9:24:23 AM |
| 26 | 10 | 2577391 | 257739.1 | -0.691 | CACP Data#1 HPLC #1\2013\011613\011613.0027.BND | 1/17/2013 9:24:44 AM |
| 27 | 10 | 2605401 | 260540.1 | 0.388 | CACP Data#1 HPLC #1\2013\011613\011613.0028.BND | 1/17/2013 9:25:02 AM |

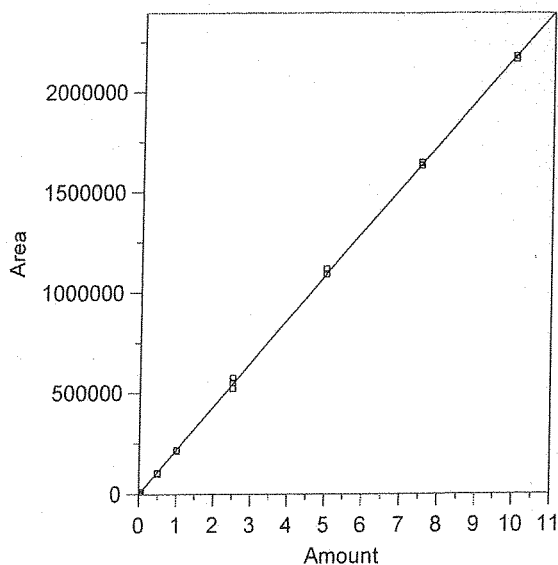
10 Valeraldehyde



Expected retention time: 8.218 minutes
 Search window: 0.5 minutes
 No retention time reference component
 Group number: 0
 High alarm limit: 0
 Low alarm limit: 0
 Component constant: 0
 Single peak quantification by area
 Y = 280512 X + 0
 Linear fit with equal weighting, forced to origin
 Coefficient of determination: 0.9997866
 Average error: 2.469%
 Average CF: 283524.1
 RSD: 3.137%

| Level | Amount | Response | Cal Factor | Error, % | Source | Date and time |
|-------|--------|----------|------------|----------|---|-----------------------|
| 1 | 0.005 | 1445.899 | 289179.8 | 3.090 | CACP Data#1 HPLC #1\2013\011613\011613.0002.BND | 1/17/2013 12:07:44 PM |
| 2 | 0.005 | 1390.823 | -278164.6 | -0.837 | CACP Data#1 HPLC #1\2013\011613\011613.0003.BND | 1/17/2013 12:01:00 PM |
| 3 | 0.005 | 1340.829 | 268165.8 | -4.401 | CACP Data#1 HPLC #1\2013\011613\011613.0004.BND | 1/17/2013 12:01:16 PM |
| 4 | 0.025 | 7353.619 | 294144.8 | 4.860 | CACP Data#1 HPLC #1\2013\011613\011613.0005.BND | 1/17/2013 9:14:58 AM |
| 5 | 0.025 | 7425.595 | 297023.8 | 5.886 | CACP Data#1 HPLC #1\2013\011613\011613.0006.BND | 1/17/2013 9:15:29 AM |
| 6 | 0.025 | 7536.798 | 301471.9 | 7.472 | CACP Data#1 HPLC #1\2013\011613\011613.0007.BND | 1/17/2013 9:16:11 AM |
| 7 | 0.05 | 14114.53 | 282290.6 | 0.634 | CACP Data#1 HPLC #1\2013\011613\011613.0008.BND | 1/17/2013 9:16:31 AM |
| 8 | 0.05 | 15079.2 | 301584 | 7.512 | CACP Data#1 HPLC #1\2013\011613\011613.0009.BND | 1/17/2013 9:16:54 AM |
| 9 | 0.05 | 14163.98 | 283279.6 | 0.987 | CACP Data#1 HPLC #1\2013\011613\011613.0010.BND | 1/17/2013 9:17:32 AM |
| 10 | 0.5 | 135255.9 | 270511.8 | -3.565 | CACP Data#1 HPLC #1\2013\011613\011613.0011.BND | 1/17/2013 9:17:53 AM |
| 11 | 0.5 | 136645.9 | 273291.8 | -2.574 | CACP Data#1 HPLC #1\2013\011613\011613.0012.BND | 1/17/2013 9:18:18 AM |
| 12 | 0.5 | 135763.1 | 271526.2 | -3.203 | CACP Data#1 HPLC #1\2013\011613\011613.0013.BND | 1/17/2013 9:18:37 AM |
| 13 | 1 | 286190.2 | 286190.2 | 2.024 | CACP Data#1 HPLC #1\2013\011613\011613.0014.BND | 1/17/2013 9:18:57 AM |
| 14 | 1 | 281834.7 | 281834.7 | 0.472 | CACP Data#1 HPLC #1\2013\011613\011613.0015.BND | 1/17/2013 9:19:16 AM |
| 15 | 1 | 286224.8 | 286224.8 | 2.037 | CACP Data#1 HPLC #1\2013\011613\011613.0016.BND | 1/17/2013 9:19:35 AM |
| 16 | 2.5 | 685932.9 | 274373.2 | -2.188 | CACP Data#1 HPLC #1\2013\011613\011613.0017.BND | 1/17/2013 9:19:53 AM |
| 17 | 2.5 | 715768.4 | 286307.3 | 2.066 | CACP Data#1 HPLC #1\2013\011613\011613.0018.BND | 1/17/2013 9:20:27 AM |
| 18 | 2.5 | 742902.5 | 297161 | 5.935 | CACP Data#1 HPLC #1\2013\011613\011613.0019.BND | 1/17/2013 9:20:50 AM |
| 19 | 5 | 1409340 | 281868 | 0.483 | CACP Data#1 HPLC #1\2013\011613\011613.0020.BND | 1/17/2013 9:21:10 AM |
| 20 | 5 | 1412526 | 282505.2 | 0.711 | CACP Data#1 HPLC #1\2013\011613\011613.0021.BND | 1/17/2013 9:21:33 AM |
| 21 | 5 | 1432906 | 286581.2 | 2.164 | CACP Data#1 HPLC #1\2013\011613\011613.0033.BND | 1/17/2013 9:22:52 AM |
| 22 | 7.5 | 2123480 | 283130.7 | 0.934 | CACP Data#1 HPLC #1\2013\011613\011613.0023.BND | 1/17/2013 9:23:16 AM |
| 23 | 7.5 | 2104405 | 280587.3 | 0.027 | CACP Data#1 HPLC #1\2013\011613\011613.0024.BND | 1/17/2013 9:23:45 AM |
| 24 | 7.5 | 2115076 | 282010.1 | 0.534 | CACP Data#1 HPLC #1\2013\011613\011613.0025.BND | 1/17/2013 9:24:04 AM |
| 25 | 10 | 2797888 | 279788.8 | -0.258 | CACP Data#1 HPLC #1\2013\011613\011613.0026.BND | 1/17/2013 9:24:23 AM |
| 26 | 10 | 2792255 | 279225.5 | -0.459 | CACP Data#1 HPLC #1\2013\011613\011613.0027.BND | 1/17/2013 9:24:44 AM |
| 27 | 10 | 2767273 | 276727.3 | -1.349 | CACP Data#1 HPLC #1\2013\011613\011613.0028.BND | 1/17/2013 9:25:02 AM |

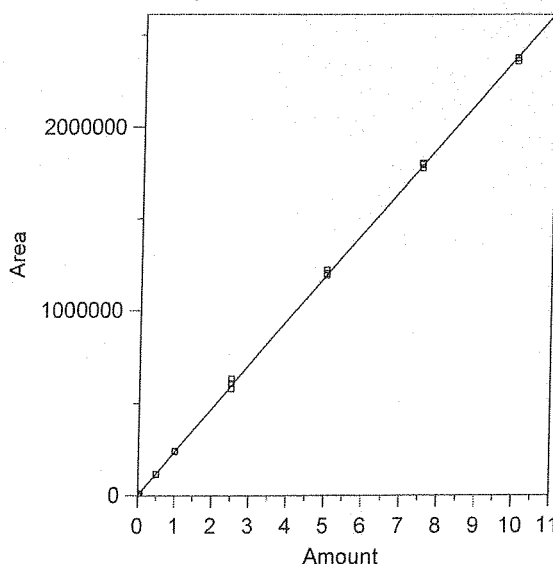
11 m-Tolualdehyde



Expected retention time: 8.714 minutes
 Search window: 0.5 minutes
 No retention time reference component
 Group number: 0
 High a arm limit: 0
 Low alarm limit: 0
 Component constant: 0
 Single peak quantification by area
 Y = 217944 X + 0
 Linear fit with equal weighting, forced to origin
 Coefficient of determination: 0.999814
 Average error: 2.420%
 Average CF: 216368.5
 RSD: 3.395%

| Level | Amount | Response | Cal Factor | Error, % | Source | Date and time |
|-------|--------|----------|------------|----------|---|-----------------------|
| 1 | 0.005 | 1084.321 | 216864.2 | -0.495 | C:\CP Data\#1 HPLC #1\2013\011613\011613.0002.BND | 1/17/2013 12:07:44 PM |
| 2 | 0.005 | 1047.397 | 209479.4 | -3.884 | C:\CP Data\#1 HPLC #1\2013\011613\011613.0003.BND | 1/17/2013 12:01:00 PM |
| 3 | 0.005 | 1050.553 | 210110.6 | -3.594 | C:\CP Data\#1 HPLC #1\2013\011613\011613.0004.BND | 1/17/2013 12:01:16 PM |
| 4 | 0.025 | 5352.188 | 214087.5 | -1.769 | C:\CP Data\#1 HPLC #1\2013\011613\011613.0005.BND | 1/17/2013 9:14:58 AM |
| 5 | 0.025 | 5534.859 | 221394.4 | 1.583 | C:\CP Data\#1 HPLC #1\2013\011613\011613.0006.BND | 1/17/2013 9:15:29 AM |
| 6 | 0.025 | 5846.229 | 233849.2 | 7.298 | C:\CP Data\#1 HPLC #1\2013\011613\011613.0007.BND | 1/17/2013 9:16:11 AM |
| 7 | 0.05 | 10182.27 | 203645.4 | -6.561 | C:\CP Data\#1 HPLC #1\2013\011613\011613.0008.BND | 1/17/2013 9:16:31 AM |
| 8 | 0.05 | 10890.73 | 217814.6 | -0.059 | C:\CP Data\#1 HPLC #1\2013\011613\011613.0009.BND | 1/17/2013 9:16:54 AM |
| 9 | 0.05 | 11251.93 | 225038.6 | 3.255 | C:\CP Data\#1 HPLC #1\2013\011613\011613.0010.BND | 1/17/2013 9:17:32 AM |
| 10 | 0.5 | 101870.9 | 203741.8 | -6.516 | C:\CP Data\#1 HPLC #1\2013\011613\011613.0011.BND | 1/17/2013 9:17:53 AM |
| 11 | 0.5 | 104487.3 | 208974.6 | -4.115 | C:\CP Data\#1 HPLC #1\2013\011613\011613.0012.BND | 1/17/2013 9:18:18 AM |
| 12 | 0.5 | 101281.7 | 202563.4 | -7.057 | C:\CP Data\#1 HPLC #1\2013\011613\011613.0013.BND | 1/17/2013 9:18:37 AM |
| 13 | 1 | 218741.4 | 218741.4 | 0.366 | C:\CP Data\#1 HPLC #1\2013\011613\011613.0014.BND | 1/17/2013 9:18:57 AM |
| 14 | 1 | 214107.1 | 214107.1 | -1.761 | C:\CP Data\#1 HPLC #1\2013\011613\011613.0015.BND | 1/17/2013 9:19:16 AM |
| 15 | 1 | 216178.3 | 216178.3 | -0.810 | C:\CP Data\#1 HPLC #1\2013\011613\011613.0016.BND | 1/17/2013 9:19:35 AM |
| 16 | 2.5 | 521558 | 208623.2 | -4.277 | C:\CP Data\#1 HPLC #1\2013\011613\011613.0017.BND | 1/17/2013 9:19:53 AM |
| 17 | 2.5 | 549983.1 | 219993.3 | 0.940 | C:\CP Data\#1 HPLC #1\2013\011613\011613.0018.BND | 1/17/2013 9:20:27 AM |
| 18 | 2.5 | 574107.8 | 229643.1 | 5.368 | C:\CP Data\#1 HPLC #1\2013\011613\011613.0019.BND | 1/17/2013 9:20:50 AM |
| 19 | 5 | 1091337 | 218267.4 | 0.148 | C:\CP Data\#1 HPLC #1\2013\011613\011613.0020.BND | 1/17/2013 9:21:10 AM |
| 20 | 5 | 1093125 | 218625 | 0.312 | C:\CP Data\#1 HPLC #1\2013\011613\011613.0021.BND | 1/17/2013 9:21:33 AM |
| 21 | 5 | 1115959 | 223191.8 | 2.408 | C:\CP Data\#1 HPLC #1\2013\011613\011613.0022.BND | 1/17/2013 9:22:52 AM |
| 22 | 7.5 | 1646059 | 219474.5 | 0.702 | C:\CP Data\#1 HPLC #1\2013\011613\011613.0023.BND | 1/17/2013 9:23:16 AM |
| 23 | 7.5 | 1632394 | 217652.5 | -0.134 | C:\CP Data\#1 HPLC #1\2013\011613\011613.0024.BND | 1/17/2013 9:23:45 AM |
| 24 | 7.5 | 1643241 | 219098.8 | 0.530 | C:\CP Data\#1 HPLC #1\2013\011613\011613.0025.BND | 1/17/2013 9:24:04 AM |
| 25 | 10 | 2178426 | 217842.6 | -0.047 | C:\CP Data\#1 HPLC #1\2013\011613\011613.0026.BND | 1/17/2013 9:24:23 AM |
| 26 | 10 | 2164076 | 216407.6 | -0.705 | C:\CP Data\#1 HPLC #1\2013\011613\011613.0027.BND | 1/17/2013 9:24:44 AM |
| 27 | 10 | 2165400 | 216540 | -0.644 | C:\CP Data\#1 HPLC #1\2013\011613\011613.0028.BND | 1/17/2013 9:25:02 AM |

12 Hexaldehyde

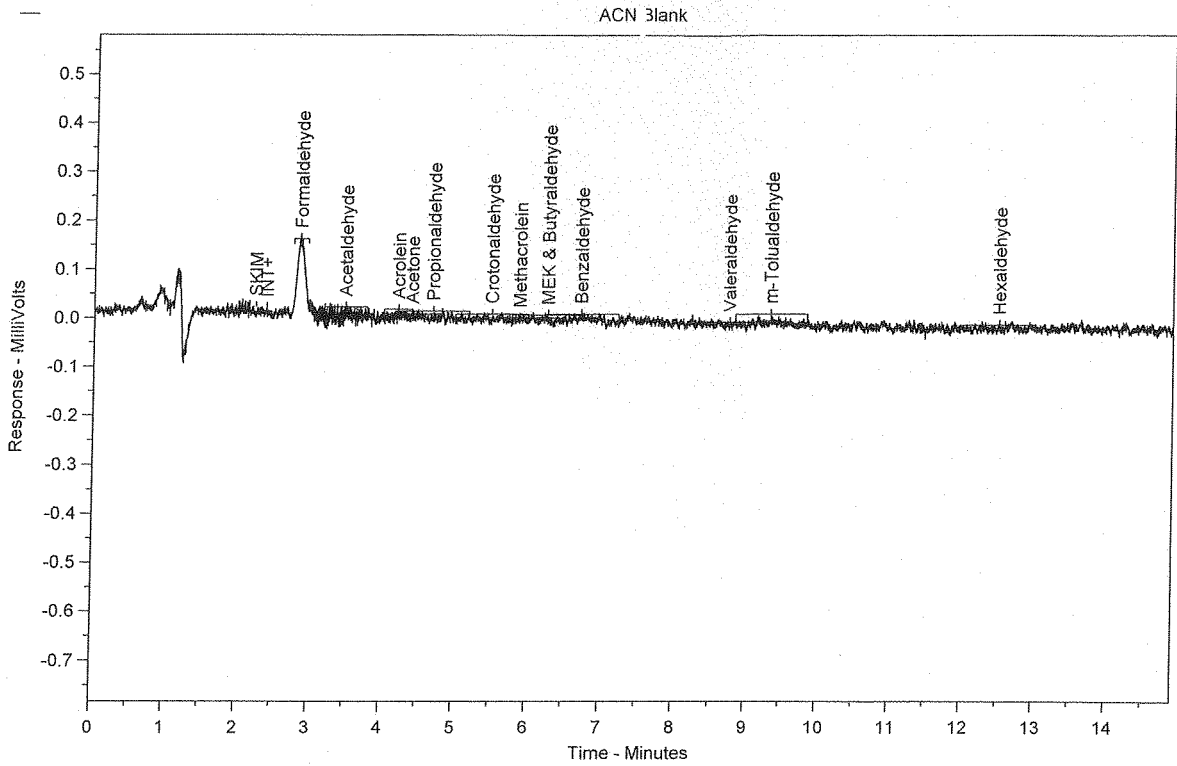


Expected retention time: 11.69 minutes
 Search window: 0.5 minutes
 No retention time reference component
 Group number: 0
 High alarm limit: 0
 Low alarm limit: 0
 Component constant: 0
 Single peak quantification by area
 $Y = 238038.2 X + 0$
 Linear fit with equal weighting, forced to origin
 Coefficient of determination: 0.9997897
 Average error: 2.235%
 Average CF: 239924.7
 RSD: 2.911%

| Level | Amount | Response | Cal Factor | Error, % | Source | Date and time |
|-------|--------|----------|------------|----------|---|-----------------------|
| 1 | 0.005 | 1179.385 | 235877 | -0.908 | CACP Data#1 HPLC #1\2013\011613\011613.0002.BND | 1/17/2013 12:07:44 PM |
| 2 | 0.005 | 1141.726 | 228345.2 | -4.072 | CACP Data#1 HPLC #1\2013\011613\011613.0003.BND | 1/17/2013 12:01:00 PM |
| 3 | 0.005 | 1198.028 | 239605.6 | 0.658 | CACP Data#1 HPLC #1\2013\011613\011613.0004.BND | 1/17/2013 12:01:16 PM |
| 4 | 0.025 | 5798.175 | 231927 | -2.567 | CACP Data#1 HPLC #1\2013\011613\011613.0005.BND | 1/17/2013 9:14:58 AM |
| 5 | 0.025 | 6347.2 | 253888 | 6.659 | CACP Data#1 HPLC #1\2013\011613\011613.0006.BND | 1/17/2013 9:15:29 AM |
| 6 | 0.025 | 6114.321 | 244572.8 | 2.745 | CACP Data#1 HPLC #1\2013\011613\011613.0007.BND | 1/17/2013 9:16:11 AM |
| 7 | 0.05 | 12059.8 | 241196 | 1.327 | CACP Data#1 HPLC #1\2013\011613\011613.0008.BND | 1/17/2013 9:16:31 AM |
| 8 | 0.05 | 12746.25 | 254925 | 7.094 | CACP Data#1 HPLC #1\2013\011613\011613.0009.BND | 1/17/2013 9:16:54 AM |
| 9 | 0.05 | 12547.26 | 250945.2 | 5.422 | CACP Data#1 HPLC #1\2013\011613\011613.0010.BND | 1/17/2013 9:17:32 AM |
| 10 | 0.5 | 116351.3 | 232702.6 | -2.241 | CACP Data#1 HPLC #1\2013\011613\011613.0011.BND | 1/17/2013 9:17:53 AM |
| 11 | 0.5 | 116956.5 | 233913 | -1.733 | CACP Data#1 HPLC #1\2013\011613\011613.0012.BND | 1/17/2013 9:18:18 AM |
| 12 | 0.5 | 115390.1 | 230780.2 | -3.049 | CACP Data#1 HPLC #1\2013\011613\011613.0013.BND | 1/17/2013 9:18:37 AM |
| 13 | 1 | 242438.8 | 242438.8 | 1.849 | CACP Data#1 HPLC #1\2013\011613\011613.0014.BND | 1/17/2013 9:18:57 AM |
| 14 | 1 | 239854.8 | 239854.8 | 0.763 | CACP Data#1 HPLC #1\2013\011613\011613.0015.BND | 1/17/2013 9:19:16 AM |
| 15 | 1 | 241212.3 | 241212.3 | 1.333 | CACP Data#1 HPLC #1\2013\011613\011613.0016.BND | 1/17/2013 9:19:35 AM |
| 16 | 2.5 | 579103.3 | 231641.3 | -2.687 | CACP Data#1 HPLC #1\2013\011613\011613.0017.BND | 1/17/2013 9:19:53 AM |
| 17 | 2.5 | 607368.1 | 242947.3 | 2.062 | CACP Data#1 HPLC #1\2013\011613\011613.0018.BND | 1/17/2013 9:20:27 AM |
| 18 | 2.5 | 632353.5 | 252941.4 | 6.261 | CACP Data#1 HPLC #1\2013\011613\011613.0019.BND | 1/17/2013 9:20:50 AM |
| 19 | 5 | 1190551 | 238110.2 | 0.030 | CACP Data#1 HPLC #1\2013\011613\011613.0020.BND | 1/17/2013 9:21:10 AM |
| 20 | 5 | 1200522 | 240104.4 | 0.868 | CACP Data#1 HPLC #1\2013\011613\011613.0021.BND | 1/17/2013 9:21:33 AM |
| 21 | 5 | 1219377 | 243875.4 | 2.452 | CACP Data#1 HPLC #1\2013\011613\011613.0022.BND | 1/17/2013 9:22:52 AM |
| 22 | 7.5 | 1800685 | 240091.3 | 0.863 | CACP Data#1 HPLC #1\2013\011613\011613.0023.BND | 1/17/2013 9:23:16 AM |
| 23 | 7.5 | 1775360 | 236714.7 | -0.556 | CACP Data#1 HPLC #1\2013\011613\011613.0024.BND | 1/17/2013 9:23:45 AM |
| 24 | 7.5 | 1793857 | 239180.9 | 0.480 | CACP Data#1 HPLC #1\2013\011613\011613.0025.BND | 1/17/2013 9:24:04 AM |
| 25 | 10 | 2371220 | 237122 | -0.385 | CACP Data#1 HPLC #1\2013\011613\011613.0026.BND | 1/17/2013 9:24:23 AM |
| 26 | 10 | 2356180 | 235618 | -1.017 | CACP Data#1 HPLC #1\2013\011613\011613.0027.BND | 1/17/2013 9:24:44 AM |
| 27 | 10 | 2374361 | 237436.1 | -0.253 | CACP Data#1 HPLC #1\2013\011613\011613.0028.BND | 1/17/2013 9:25:02 AM |

Raw Data

Chrom Perfect Chromatogram Report



Sample Name = ACN Blank

Instrument = HPLC #1

Raw File Name = C:\Chromperfect 2\Data\HPLC #1\2013\06\10\13\061013.0001.RAW

Date Taken (end) = 6/10/2013 8:19:36 AM

Method File Name = C:\Chromperfect 2\Methods and Sequences\#1 HPLC #1\2013\01\16\13 TO-11A.MET

Method Description=TO-11A Carbonyls

Calibration File Name = C:\Chromperfect 2\Methods and Sequences\#1 HPLC #1\2013\01\16\13 TO-11A.CAL

Concentration Units = ug/ml

Run Time = 14.89889

Vial Number = 1

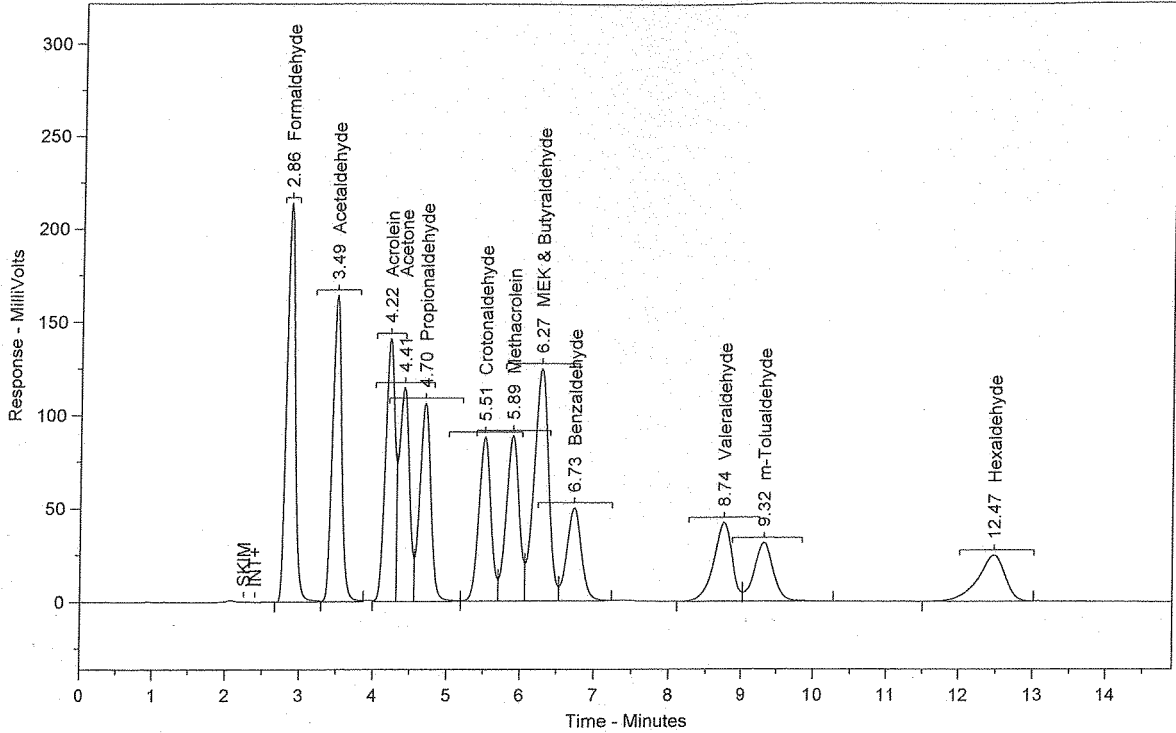
Injection Volume = 10

Dilution Factor = 1

| Peak # | Ret. Time | Name | Amount | Amt % | Area | Area % | Type | Width |
|------------------|-----------|------|--------|-------|------|--------|------|-------|
| Total Area = 0 | | | | | | | | |
| Total Height = 0 | | | | | | | | |
| Total Amount = 0 | | | | | | | | |

Chrom Perfect Chromatogram Report

CCV 2.5 ug/mL (PS011613-01)



Sample Name = CCV 2.5 ug/mL (PS011613-01)

Instrument = HPLC #1

Raw File Name = C:\Chromperfect 2\Data\HPLC #1\2013\061013\061013.0002.RAW

Date Taken (end) = 6/10/2013 8:36:11 AM

Method File Name = C:\Chromperfect 2\Methods and Sequences\#1 HPLC #1\2013\011613 TO-11A.MET

Method Description=TO-11A Carbonyls

Calibration File Name = C:\Chromperfect 2\Methods and Sequences\#1 HPLC #1\2013\011613 TO-11A.CAL

Concentration Units = ug/ml

Run Time = 14.89889

Vial Number = 2

Injection Volume = 10

Dilution Factor = 1

| Peak # | Ret. Time | Name | Amount | Amt % | Area | Area % | Type | Width |
|--------|-----------|---------------------|--------|--------|---------|--------|------|-------|
| 1 | 2.86 | Formaldehyde | 2.6684 | 7.704 | 1695749 | 13.032 | SBB | 0.12 |
| 2 | 3.49 | Acetaldehyde | 2.6853 | 7.753 | 1406686 | 10.810 | TBB | 0.13 |
| 3 | 4.22 | Acrolein | 2.7034 | 7.805 | 1290904 | 9.921 | BV | 0.17 |
| 4 | 4.41 | Acetone | 2.6720 | 7.715 | 1096163 | 8.424 | VV | 0.16 |
| 5 | 4.70 | Propionaldehyde | 2.6746 | 7.723 | 1095881 | 8.422 | VV | 0.16 |
| 6 | 5.51 | Crotonaldehyde | 2.6435 | 7.633 | 1002402 | 7.703 | VV | 0.18 |
| 7 | 5.89 | Methacrolein | 2.6677 | 7.702 | 1070353 | 8.226 | VV | 0.17 |
| 8 | 6.27 | MEK & Butyraldehyde | 5.3324 | 15.396 | 1718288 | 13.205 | VV | 0.20 |
| 9 | 6.73 | Benzaldehyde | 2.6009 | 7.510 | 675028 | 5.188 | VB | 0.21 |
| 10 | 8.74 | Valeraldehyde | 2.6717 | 7.714 | 749439 | 5.759 | BV | 0.27 |
| 11 | 9.32 | m-Tolualdehyde | 2.6643 | 7.693 | 580664 | 4.462 | VB | 0.28 |
| 12 | 12.47 | Hexaldehyde | 2.6502 | 7.652 | 630845 | 4.848 | BB | 0.38 |

Total Area = 1.30124E+07

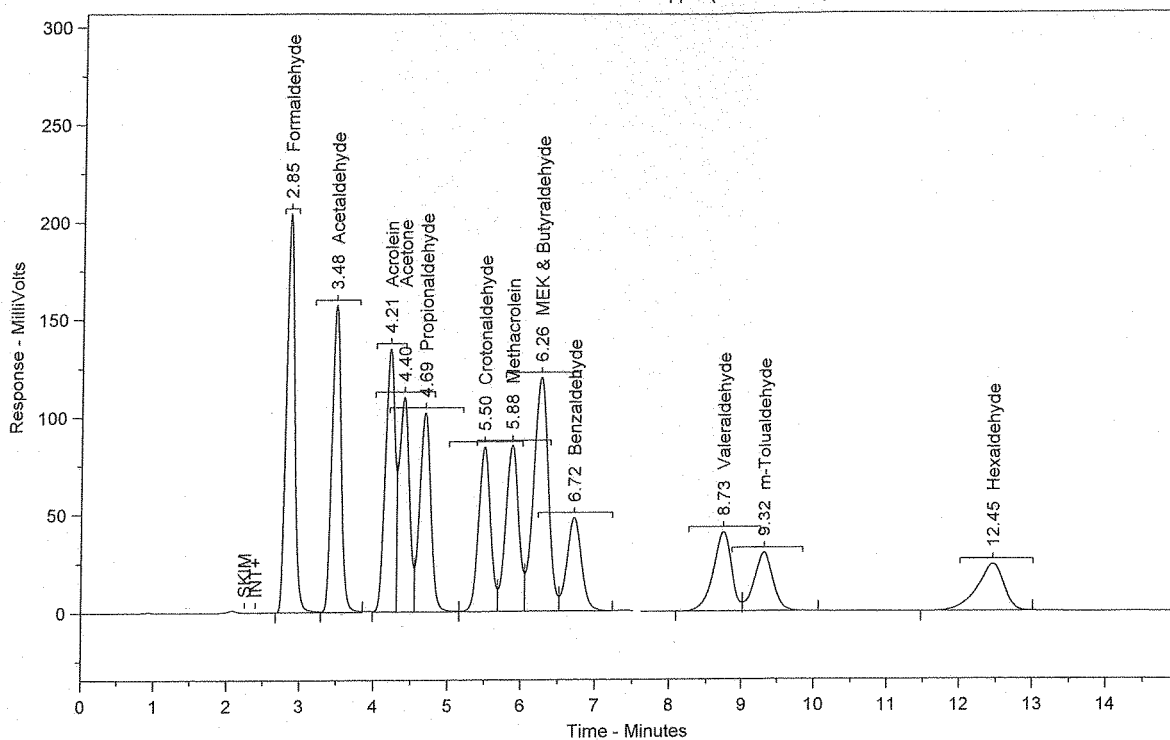
Total Height = 1187243

Total Amount = 34.63441

HP
06/10/13

Chrom Perfect Chromatogram Report

SS 1.25 ppm (PS080412-01)



Sample Name = SS 1.25 ppm (PS080412-01)

Instrument = HPLC #1

Raw File Name = C:\Chromperfect 2\Data\HPLC #1\2013\061013\061013.0003.RAW

Date Taken (end) = 6/10/2013 8:52:47 AM

Method File Name = C:\Chromperfect 2\Methods and Sequences\#1 HPLC #1\2013\011613 TO-11A.MET

Method Description=TO-11A Carbonyls

Calibration File Name = C:\Chromperfect 2\Methods and Sequences\#1 HPLC #1\2013\011613 TO-11A.CAL

Concentration Units = ug/ml

Run Time = 14.89889

Vial Number = 3

Injection Volume = 10

Dilution Factor = 1

| Peak # | Ret. Time | Name | Amount | Amt % | Area | Area % | Type | Width |
|--------|-----------|---------------------|--------|--------|---------|--------|------|-------|
| 1 | 2.85 | Formaldehyde | 2.5496 | 7.680 | 1620285 | 12.990 | SBB | 0.12 |
| 2 | 3.48 | Acetaldehyde | 2.5736 | 7.752 | 1348189 | 10.809 | TBB | 0.13 |
| 3 | 4.21 | Acrolein | 2.5855 | 7.788 | 1234626 | 9.898 | BV | 0.17 |
| 4 | 4.40 | Acetone | 2.5713 | 7.745 | 1054832 | 8.457 | VV | 0.16 |
| 5 | 4.69 | Propionaldehyde | 2.5700 | 7.741 | 1052994 | 8.442 | VV | 0.16 |
| 6 | 5.50 | Crotonaldehyde | 2.5325 | 7.628 | 960303 | 7.699 | VV | 0.18 |
| 7 | 5.88 | Methacrolein | 2.5643 | 7.724 | 1028857 | 8.249 | VV | 0.17 |
| 8 | 6.26 | MEK & Butyraldehyde | 5.1170 | 15.413 | 1648862 | 13.219 | VV | 0.20 |
| 9 | 6.72 | Benzaldehyde | 2.4961 | 7.519 | 647816 | 5.194 | VB | 0.21 |
| 10 | 8.73 | Valeraldehyde | 2.5681 | 7.736 | 720387 | 5.775 | BV | 0.27 |
| 11 | 9.32 | m-Tolualdehyde | 2.5328 | 7.629 | 552009 | 4.426 | VB | 0.28 |
| 12 | 12.45 | Hexaldehyde | 2.5377 | 7.644 | 604079 | 4.843 | BB | 0.37 |

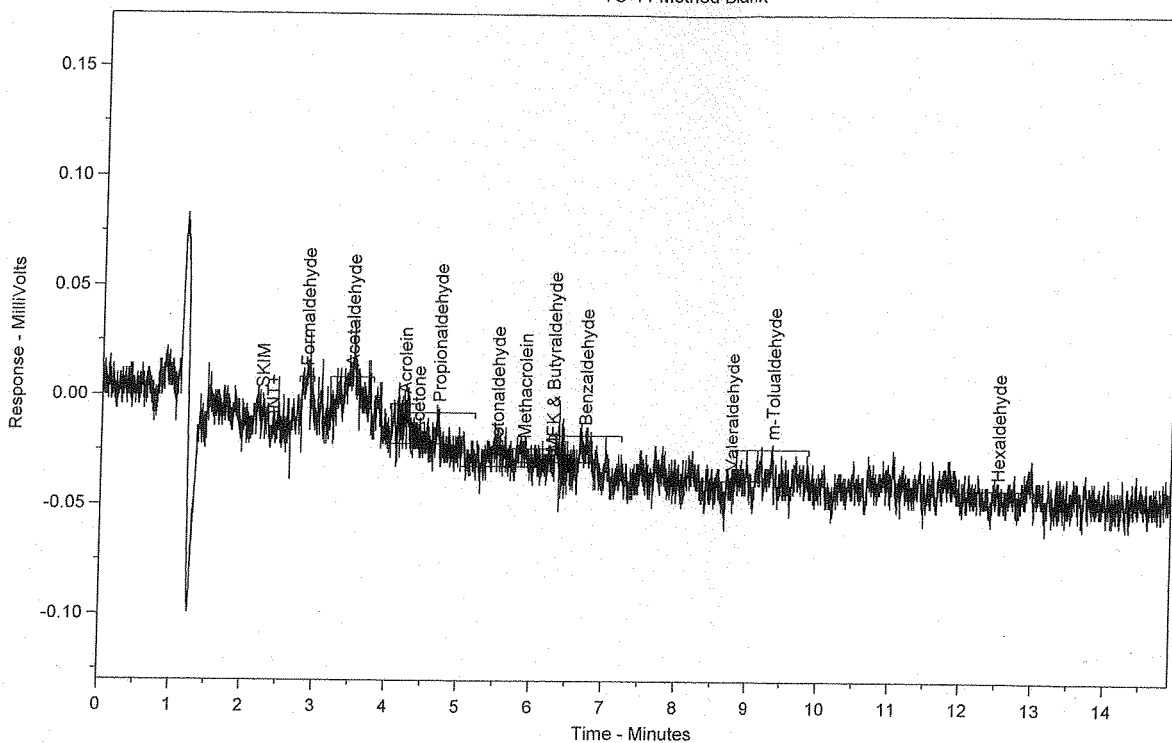
Total Area = 1.247324E+07

Total Height = 1137349

Total Amount = 33.19849

HP
06/10/13

TO-11 Method Blank



Sample Name = TO-11 Method Blank

Instrument = HPLC #1

Raw File Name = C:\Chromperfect 2\Data\HPLC #1\2013\061013\061013.0004.RAW

Date Taken (end) = 6/10/2013 9:09:22 AM

Method File Name = C:\Chromperfect 2\Methods and Sequences\#1 HPLC #1\2013\011613 TO-11A.MET

Method Description=TO-11A Carbonyls

Calibration File Name = C:\Chromperfect 2\Methods and Sequences\#1 HPLC #1\2013\011613 TO-11A.CAL

Concentration Units = ug/ml

Run Time = 14.89889

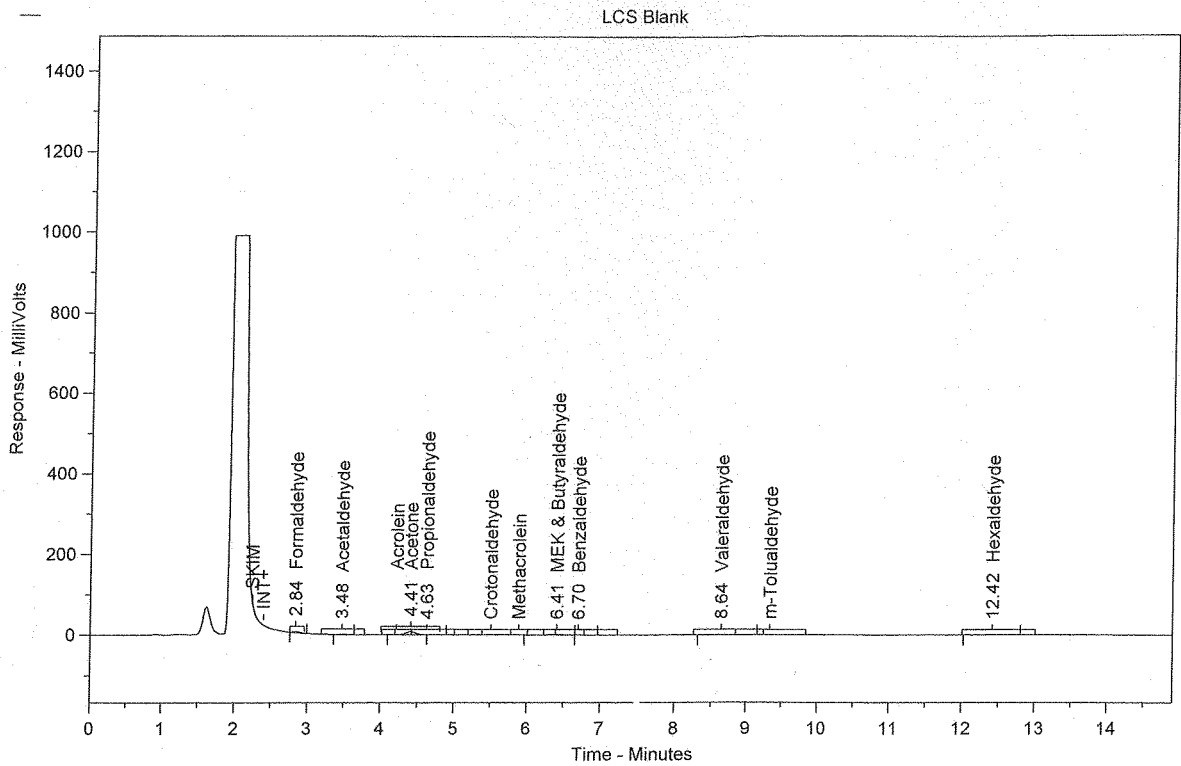
Injection Volume = 10

Vial Number = 4

Dilution Factor = 1

| Peak # | Ret. Time | Name | Amount | Amt % | Area | Area % | Type | Width |
|----------------|-----------|------|------------------|-------|------|------------------|------|-------|
| Total Area = 0 | | | Total Height = 0 | | | Total Amount = 0 | | |

Chrom Perfect Chromatogram Report



Sample Name = LCS Blank

Instrument = HPLC #1

Raw File Name = C:\Chromperfect 2\Data\HPLC #1\2013\061013\061013.0005.RAW

Date Taken (end) = 6/10/2013 9:25:57 AM

Method File Name = C:\Chromperfect 2\Data\HPLC #1\2013\061013\061013.0005.BND

Method Description=TO-11A Carbonyls

Calibration File Name = C:\Chromperfect 2\Data\HPLC #1\2013\061013\061013.0005.BND

Concentration Units = ug/ml

Run Time = 14.89889

Vial Number = 5

Injection Volume = 10

Dilution Factor = 1

| Peak # | Ret. Time | Name | Amount | Amt % | Area | Area % | Type | Width |
|--------|-----------|---------------------|--------|--------|-------|--------|------|-------|
| 1 | 2.84 | Formaldehyde | 0.0235 | 5.995 | 14932 | 9.808 | BB | 0.15 |
| 2 | 3.48 | Acetaldehyde | 0.0145 | 3.695 | 7586 | 4.982 | BB | 0.16 |
| 3 | 4.41 | Acetone | 0.1998 | 50.966 | 81949 | 53.824 | SBB | 0.15 |
| 4 | 4.63 | Propionaldehyde | 0.0180 | 4.582 | 7359 | 4.833 | TBB | 0.13 |
| 5 | 6.41 | MEK & Butyraldehyde | 0.0789 | 20.124 | 25416 | 16.694 | BV | 0.26 |
| 6 | 6.70 | Benzaldehyde | 0.0140 | 3.583 | 3645 | 2.394 | VB | 0.16 |
| 7 | 8.64 | Valeraldehyde | 0.0248 | 6.317 | 6946 | 4.562 | BB | 0.35 |
| 8 | 12.42 | Hexaldehyde | 0.0186 | 4.737 | 4419 | 2.903 | BB | 0.43 |

Total Area = 152252.3

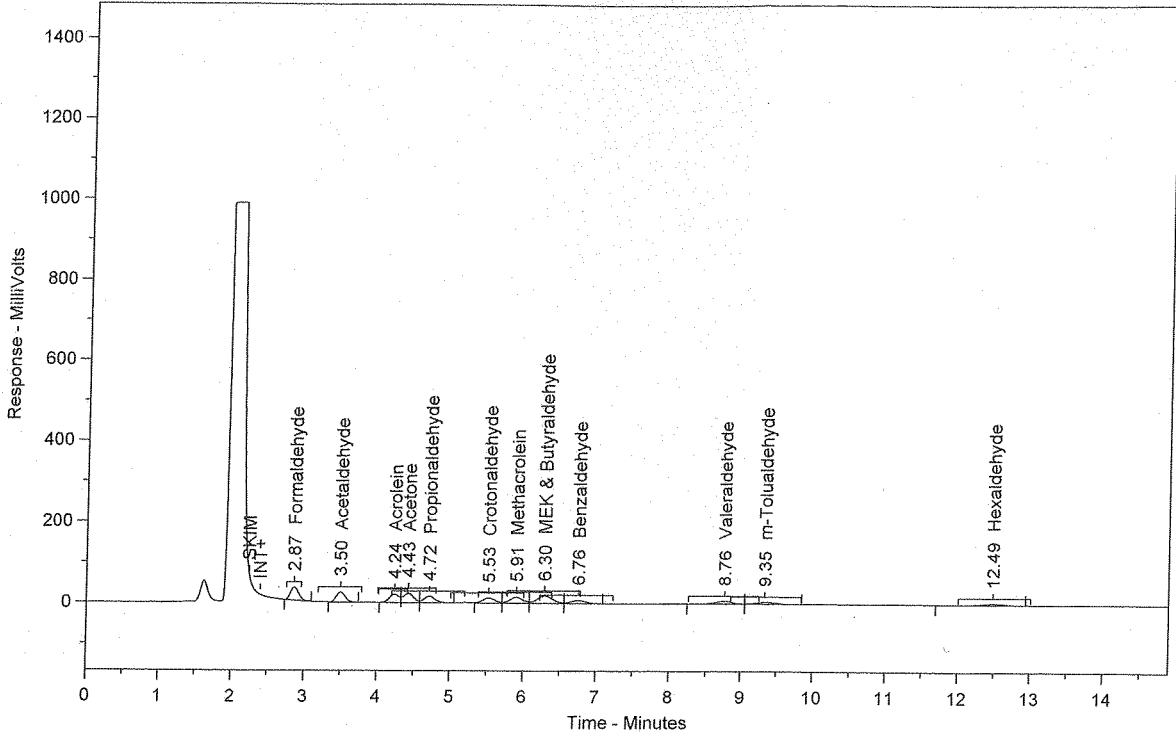
Total Height = 13557.93

Total Amount = 0.3919431

MP
06/10/13

Chrom Perfect Chromatogram Report

LCS 1.25ug/mL (PS011013-01)



Sample Name = LCS 1.25ug/mL (PS011013-01)

Instrument = HPLC #1

Raw File Name = C:\Chromperfect 2\Data\HPLC #1\2013\061013\061013.0006.RAW

Date Taken (end) = 6/10/2013 9:42:33 AM

Method File Name = C:\Chromperfect 2\Methods and Sequences\#1 HPLC #1\2013\011613 TO-11A.MET

Method Description=TO-11A Carbonyls

Calibration File Name = C:\Chromperfect 2\Methods and Sequences\#1 HPLC #1\2013\011613 TO-11A.CAL

Concentration Units = ug/ml

Run Time = 14.89889

Vial Number = 6

Injection Volume = 10

Dilution Factor = 1

| Peak # | Ret. Time | Name | Amount | Amt % | Area | Area % | Type | Width |
|--------|-----------|---------------------|--------|--------|--------|--------|------|-------|
| 1 | 2.87 | Formaldehyde | 0.3961 | 7.438 | 251713 | 12.560 | BB | 0.13 |
| 2 | 3.50 | Acetaldehyde | 0.3982 | 7.478 | 208589 | 10.408 | BB | 0.13 |
| 3 | 4.24 | Acrolein | 0.3915 | 7.353 | 186963 | 9.329 | BV | 0.17 |
| 4 | 4.43 | Acetone | 0.5518 | 10.362 | 226360 | 11.295 | VV | 0.16 |
| 5 | 4.72 | Propionaldehyde | 0.4051 | 7.607 | 165962 | 8.281 | VB | 0.16 |
| 6 | 5.53 | Crotonaldehyde | 0.3684 | 6.918 | 139696 | 6.971 | BV | 0.17 |
| 7 | 5.91 | Methacrolein | 0.4300 | 8.075 | 172520 | 8.609 | VV | 0.17 |
| 8 | 6.30 | MEK & Butyraldehyde | 0.7923 | 14.880 | 255312 | 12.740 | VV | 0.21 |
| 9 | 6.76 | Benzaldehyde | 0.3890 | 7.305 | 100959 | 5.038 | VB | 0.21 |
| 10 | 8.76 | Valeraldehyde | 0.4093 | 7.686 | 114801 | 5.728 | BV | 0.27 |
| 11 | 9.35 | m-Tolualdehyde | 0.3809 | 7.153 | 83013 | 4.142 | VB | 0.28 |
| 12 | 12.49 | Hexaldehyde | 0.4124 | 7.745 | 98164 | 4.898 | BB | 0.38 |

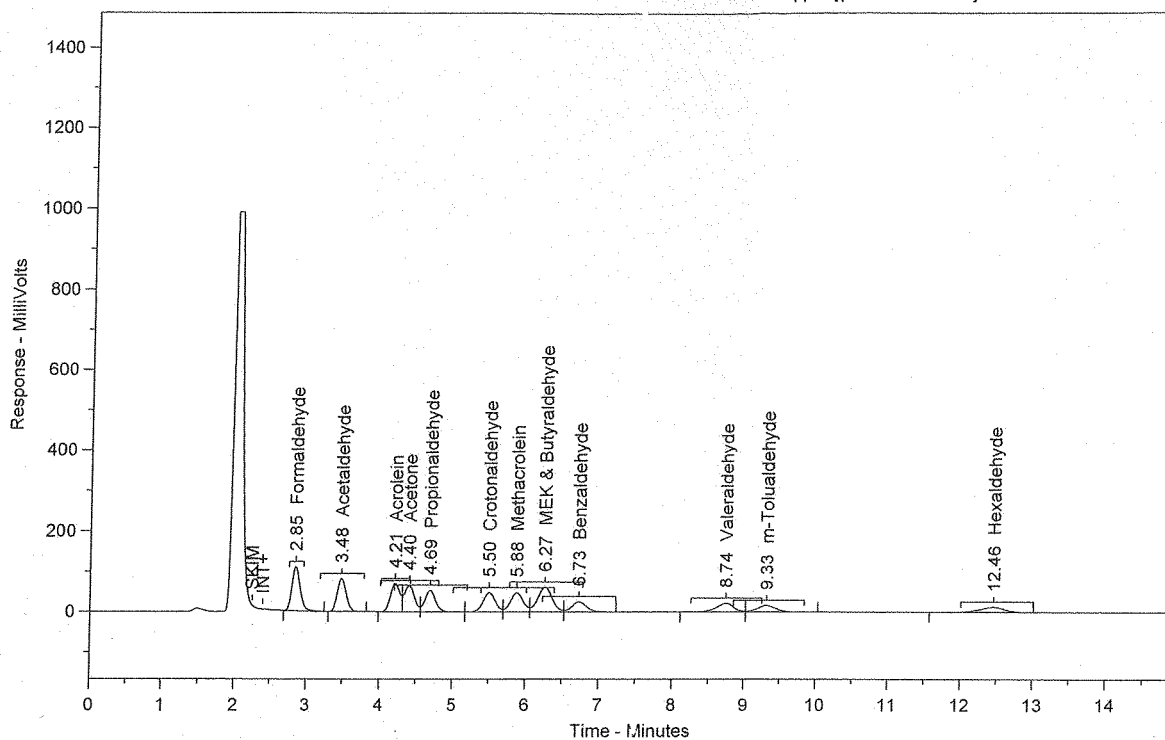
Total Area = 2004051

Total Height = 182982.6

Total Amount = 5.324869

Chrom Perfect Chromatogram Report

MS 130660-63302 1.25 ppm [(PS011613-01x2)]



Sample Name = MS 130660-63302 1.25 ppm [(PS011613-01x2)]

Instrument = HPLC #1

Raw File Name = C:\Chromperfect 2\Data\HPLC #1\2013\061013\061013.0007.RAW

Date Taken (end) = 6/10/2013 9:59:08 AM

Method File Name = C:\Chromperfect 2\Methods and Sequences\#1 HPLC #1\2013\011613 TO-11A.MET

Method Description=TO-11A Carbonyls

Calibration File Name = C:\Chromperfect 2\Methods and Sequences\#1 HPLC #1\2013\011613 TO-11A.CAL

Concentration Units = ug/ml

Run Time = 14.89889

Vial Number = 7

Injection Volume = 10

Dilution Factor = 1

| Peak # | Ret. Time | Name | Amount | Amt % | Area | Area % | Type | Width |
|--------|-----------|---------------------|--------|--------|--------|--------|------|-------|
| 1 | 2.85 | Formaldehyde | 1.3538 | 7.698 | 860339 | 13.006 | BB | 0.12 |
| 2 | 3.48 | Acetaldehyde | 1.3203 | 7.508 | 691651 | 10.456 | BB | 0.13 |
| 3 | 4.21 | Acrolein | 1.3268 | 7.545 | 633567 | 9.578 | BV | 0.17 |
| 4 | 4.40 | Acetone | 1.5076 | 8.573 | 618476 | 9.350 | VV | 0.16 |
| 5 | 4.69 | Propionaldehyde | 1.3247 | 7.533 | 542757 | 8.205 | VV | 0.16 |
| 6 | 5.50 | Crotonaldehyde | 1.4424 | 8.202 | 546965 | 8.269 | VV | 0.18 |
| 7 | 5.88 | Methacrolein | 1.4042 | 7.985 | 563392 | 8.517 | VV | 0.17 |
| 8 | 6.27 | MEK & Butyraldehyde | 2.5952 | 14.757 | 836265 | 12.642 | VV | 0.20 |
| 9 | 6.73 | Benzaldehyde | 1.3037 | 7.413 | 338360 | 5.115 | VB | 0.21 |
| 10 | 8.74 | Valeraldehyde | 1.3252 | 7.536 | 371746 | 5.620 | BV | 0.26 |
| 11 | 9.33 | m-Tolualdehyde | 1.3498 | 7.676 | 294190 | 4.447 | VB | 0.27 |
| 12 | 12.46 | Hexaldehyde | 1.3321 | 7.575 | 317100 | 4.794 | BB | 0.37 |

Total Area = 6614808

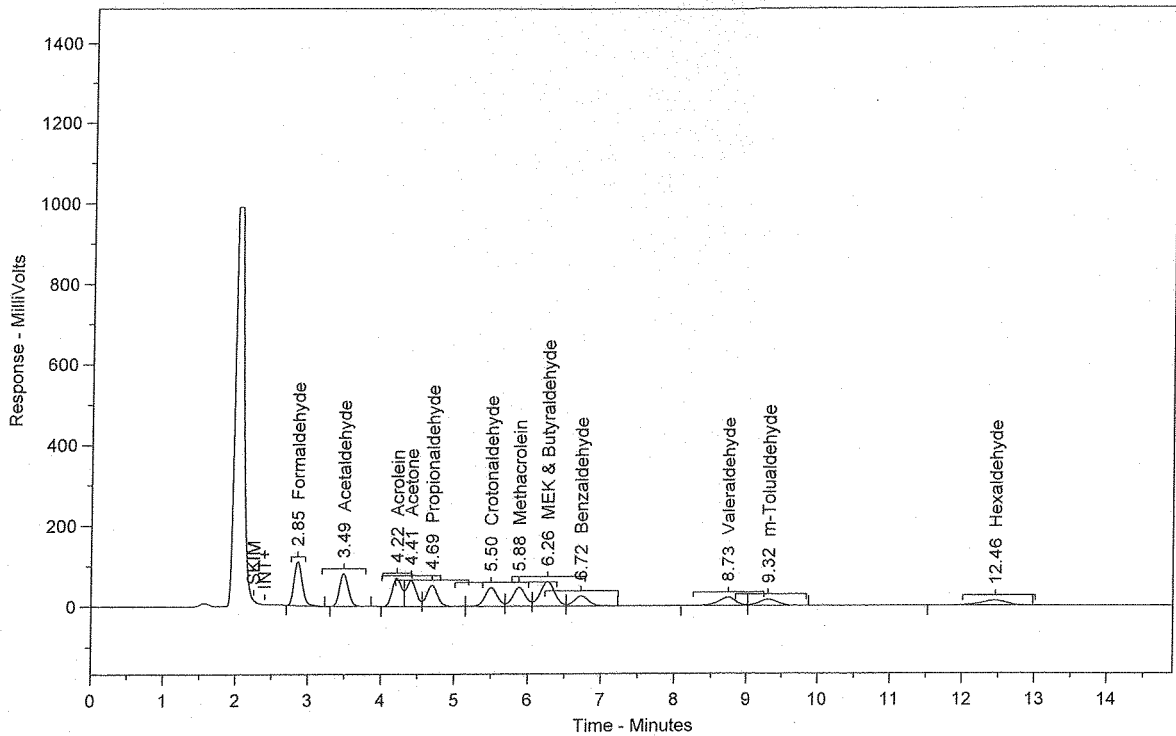
Total Height = 605881.4

Total Amount = 17.58597

HP
06/10/13

Chrom Perfect Chromatogram Report

MSD 130660-63302 1.25 ppm [(PS011613-01x2)]



Sample Name = MSD 130660-63302 1.25 ppm [(PS011613-01x2)] Instrument = HPLC #1

Raw File Name = C:\Chromperfect 2\Data\HPLC #1\2013\061013\061013.0008.RAW

Date Taken (end) = 6/10/2013 10:15:43 AM

Method File Name = C:\Chromperfect 2\Methods and Sequences\#1 HPLC #1\2013\011613 TO-11A.MET

Method Description=TO-11A Carbonyls

Calibration File Name = C:\Chromperfect 2\Methods and Sequences\#1 HPLC #1\2013\011613 TO-11A.CAL

Concentration Units = ug/ml

Run Time = 14.89889

Vial Number = 8

Injection Volume = 10

Dilution Factor = 1

| Peak # | Ret. Time | Name | Amount | Amt % | Area | Area % | Type | Width |
|--------|-----------|---------------------|--------|--------|--------|--------|------|-------|
| 1 | 2.85 | Formaldehyde | 1.3450 | 7.712 | 854761 | 13.023 | BB | 0.12 |
| 2 | 3.49 | Acetaldehyde | 1.3126 | 7.526 | 687611 | 10.476 | BB | 0.13 |
| 3 | 4.22 | Acrolein | 1.3258 | 7.602 | 633098 | 9.646 | BV | 0.17 |
| 4 | 4.41 | Acetone | 1.4866 | 8.524 | 609873 | 9.292 | VV | 0.16 |
| 5 | 4.69 | Propionaldehyde | 1.3068 | 7.493 | 535450 | 8.158 | VV | 0.16 |
| 6 | 5.50 | Crotonaldehyde | 1.4307 | 8.203 | 542517 | 8.266 | VV | 0.18 |
| 7 | 5.88 | Methacrolein | 1.4001 | 8.028 | 561739 | 8.559 | VV | 0.17 |
| 8 | 6.26 | MEK & Butyraldehyde | 2.5763 | 14.772 | 830154 | 12.648 | VV | 0.20 |
| 9 | 6.72 | Benzaldehyde | 1.2907 | 7.401 | 334971 | 5.104 | VB | 0.21 |
| 10 | 8.73 | Valeraldehyde | 1.3196 | 7.566 | 370152 | 5.640 | BV | 0.26 |
| 11 | 9.32 | m-Tolualdehyde | 1.3275 | 7.612 | 289314 | 4.408 | VB | 0.27 |
| 12 | 12.46 | Hexaldehyde | 1.3185 | 7.560 | 313862 | 4.782 | BB | 0.38 |

Total Area = 6563502

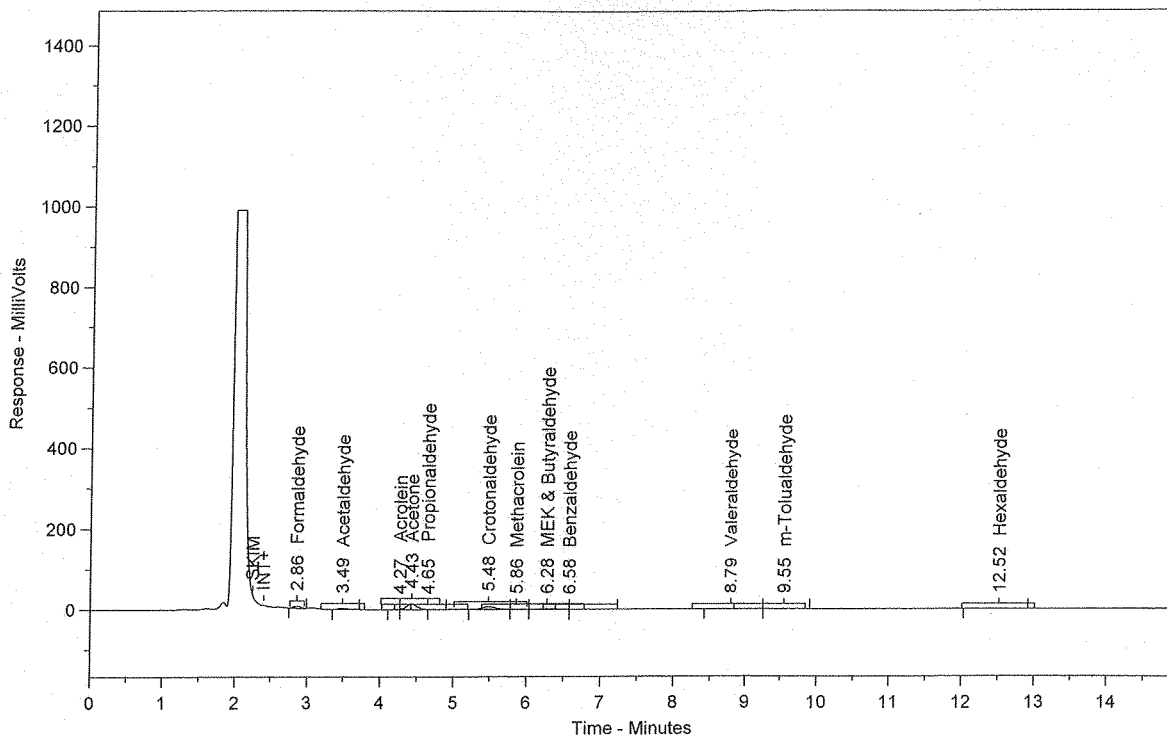
Total Height = 599266.4

Total Amount = 17.44016

HP
06/10/13

Chrom Perfect Chromatogram Report

130660-63302



Sample Name = 130660-63302

Instrument = HPLC #1

Raw File Name = C:\Chromperfect 2\Data\HPLC #1\2013\061013\061013.0009.RAW

Date Taken (end) = 6/10/2013 10:32:22 AM

Method File Name = C:\Chromperfect 2\Data\HPLC #1\2013\061013\061013.0009.BND

Method Description=TO-11A Carbonyls

Calibration File Name = C:\Chromperfect 2\Data\HPLC #1\2013\061013\061013.0009.BND

Concentration Units = ug/ml

Run Time = 14.89889

Vial Number = 9

Injection Volume = 10

Dilution Factor = 1

| Peak # | Ret. Time | Name | Amount | Amt % | Area | Area % | Type | Width |
|--------|-----------|---------------------|--------|--------|--------|--------|------|-------|
| 1 | 2.86 | Formaldehyde | 0.0565 | 6.254 | 35933 | 9.990 | BB | 0.12 |
| 2 | 3.49 | Acetaldehyde | 0.0448 | 4.961 | 23493 | 6.531 | BB | 0.13 |
| 3 | 4.27 | Acrolein | 0.0024 | 0.263 | 1136 | 0.316 | BV | 0.02 |
| 4 | 4.43 | Acetone | 0.3426 | 37.893 | 140540 | 39.072 | SBB | 0.14 |
| 5 | 4.65 | Propionaldehyde | 0.0127 | 1.409 | 5218 | 1.451 | TBB | 0.13 |
| 6 | 5.48 | Crotonaldehyde | 0.2487 | 27.511 | 94313 | 26.220 | BV | 0.20 |
| 7 | 5.86 | Methacrolein | 0.0203 | 2.250 | 8162 | 2.269 | VV | 0.18 |
| 8 | 6.28 | MEK & Butyraldehyde | 0.0962 | 10.644 | 31008 | 8.621 | VV | 0.21 |
| 9 | 6.58 | Benzaldehyde | 0.0273 | 3.017 | 7078 | 1.968 | VB | 0.37 |
| 10 | 8.79 | Valeraldehyde | 0.0169 | 1.869 | 4739 | 1.317 | BV | 0.37 |
| 11 | 9.55 | m-Tolualdehyde | 0.0188 | 2.080 | 4098 | 1.139 | VB | 0.31 |
| 12 | 12.52 | Hexaldehyde | 0.0167 | 1.850 | 3981 | 1.107 | BB | 0.43 |

Total Area = 359699.6

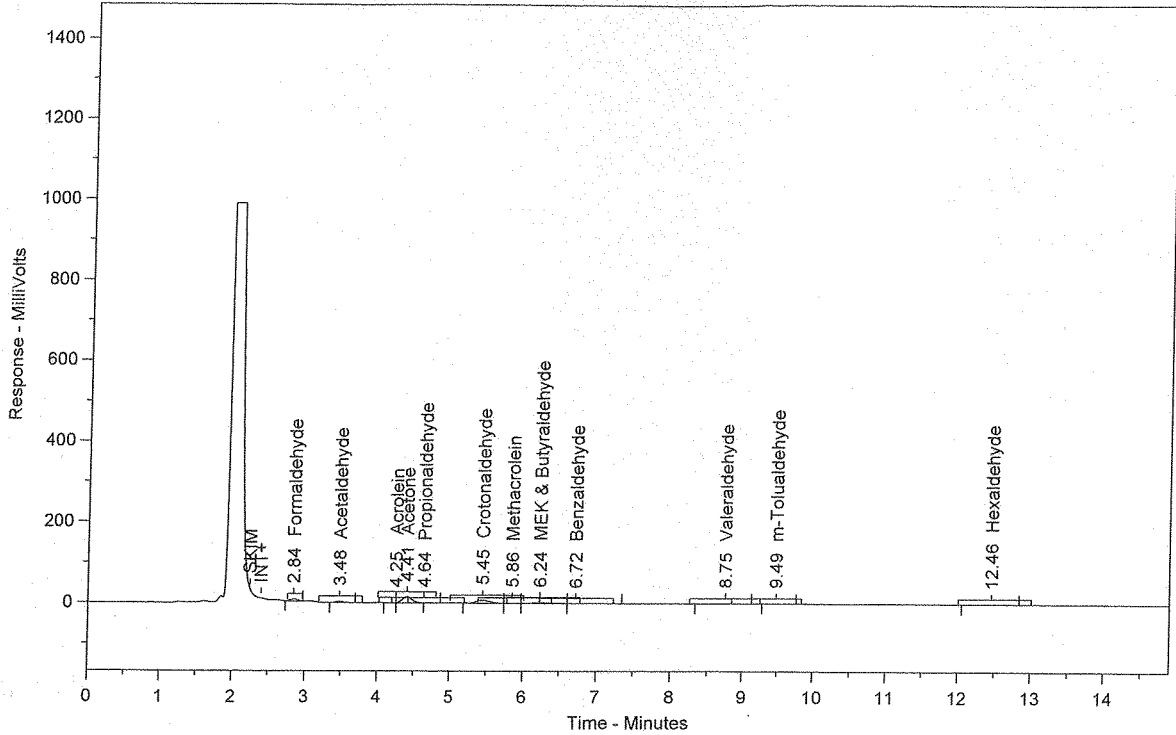
Total Height = 34224.84

Total Amount = 0.9040675

HP
06/10/13

Chrom Perfect Chromatogram Report

130660-63302 Dup



Sample Name = 130660-63302 Dup

Instrument = HPLC #1

Raw File Name = C:\Chromperfect 2\Data\HPLC #1\2013\061013\061013.0010.RAW

Date Taken (end) = 6/10/2013 10:48:58 AM

Method File Name = C:\Chromperfect 2\Data\HPLC #1\2013\061013\061013.0010.BND

Method Description=TO-11A Carbonyls

Calibration File Name = C:\Chromperfect 2\Data\HPLC #1\2013\061013\061013.0010.BND

Concentration Units = ug/ml

Run Time = 14.89889

Vial Number = 10

Injection Volume = 10

Dilution Factor = 1

| Peak # | Ret. Time | Name | Amount | Amt % | Area | Area % | Type | Width |
|--------|-----------|---------------------|--------|--------|--------|--------|------|-------|
| 1 | 2.84 | Formaldehyde | 0.0592 | 6.536 | 37630 | 10.412 | BB | 0.11 |
| 2 | 3.48 | Acetaldehyde | 0.0455 | 5.025 | 23849 | 6.599 | BB | 0.13 |
| 3 | 4.25 | Acrolein | 0.0023 | 0.255 | 1103 | 0.305 | BV | 0.02 |
| 4 | 4.41 | Acetone | 0.3524 | 38.899 | 144566 | 40.000 | SBB | 0.15 |
| 5 | 4.64 | Propionaldehyde | 0.0111 | 1.224 | 4545 | 1.258 | TBB | 0.11 |
| 6 | 5.45 | Crotonaldehyde | 0.2408 | 26.582 | 91315 | 25.266 | BV | 0.20 |
| 7 | 5.86 | Methacrolein | 0.0146 | 1.608 | 5845 | 1.617 | VV | 0.18 |
| 8 | 6.24 | MEK & Butyraldehyde | 0.1038 | 11.463 | 33462 | 9.259 | VV | 0.22 |
| 9 | 6.72 | Benzaldehyde | 0.0266 | 2.933 | 6895 | 1.908 | VB | 0.39 |
| 10 | 8.75 | Valeraldehyde | 0.0171 | 1.888 | 4798 | 1.327 | BV | 0.38 |
| 11 | 9.49 | m-Tolualdehyde | 0.0163 | 1.797 | 3548 | 0.982 | VB | 0.27 |
| 12 | 12.46 | Hexaldehyde | 0.0162 | 1.791 | 3861 | 1.068 | BB | 0.40 |

Total Area = 361417.3

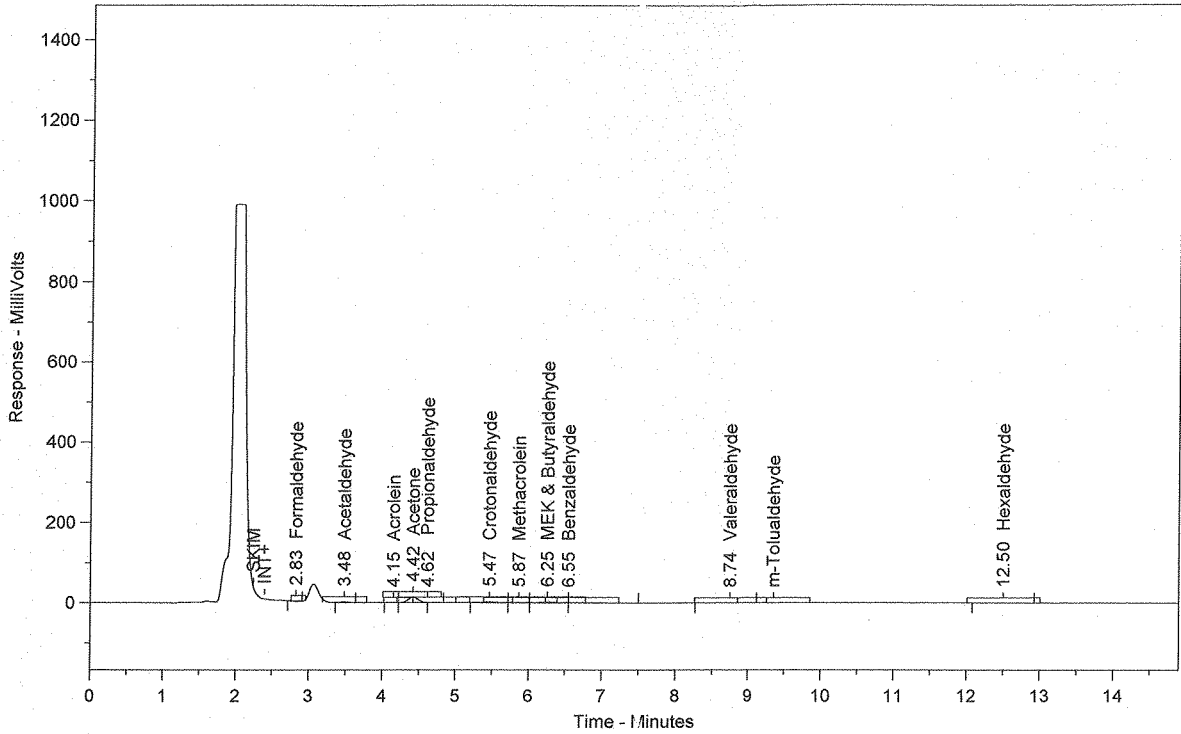
Total Height = 34920.56

Total Amount = 0.9059318

HP
06/10/13

Chrom Perfect Chromatogram Report

130660-63303



Sample Name = 130660-63303

Instrument = HPLC #1

Raw File Name = C:\Chromperfect 2\Data\HPLC #1\2013\061013\061013.0011.RAW

Date Taken (end) = 6/10/2013 11:05:33 AM

Method File Name = C:\Chromperfect 2\Methods and Sequences\#1 HPLC #1\2013\011613 TO-11A.MET

Method Description=TO-11A Carbonyls

Calibration File Name = C:\Chromperfect 2\Methods and Sequences\#1 HPLC #1\2013\011613 TO-11A.CAL

Concentration Units = ug/ml

Run Time = 14.89889

Vial Number = 11

Injection Volume = 10

Dilution Factor = 1

| Peak # | Ret. Time | Name | Amount | Amt % | Area | Area % | Type | Width |
|--------|-----------|---------------------|--------|--------|--------|--------|------|-------|
| 1 | 2.83 | Formaldehyde | 0.0118 | 1.742 | 7472 | 2.914 | BB | 0.17 |
| 2 | 3.48 | Acetaldehyde | 0.0266 | 3.937 | 13926 | 5.431 | BB | 0.13 |
| 3 | 4.15 | Acrolein | 0.0030 | 0.442 | 1425 | 0.556 | BV | 0.14 |
| 4 | 4.42 | Acetone | 0.3318 | 49.148 | 136131 | 53.094 | SBB | 0.15 |
| 5 | 4.62 | Propionaldehyde | 0.0101 | 1.490 | 4122 | 1.608 | TBB | 0.11 |
| 6 | 5.47 | Crotonaldehyde | 0.0688 | 10.190 | 26089 | 10.175 | BV | 0.20 |
| 7 | 5.87 | Methacrolein | 0.0190 | 2.820 | 7640 | 2.980 | VV | 0.15 |
| 8 | 6.25 | MEK & Butyraldehyde | 0.1044 | 15.463 | 33642 | 13.121 | VV | 0.20 |
| 9 | 6.55 | Benzaldehyde | 0.0745 | 11.031 | 19330 | 7.539 | VB | 0.56 |
| 10 | 8.74 | Valeraldehyde | 0.0145 | 2.140 | 4054 | 1.581 | BB | 0.46 |
| 11 | 12.50 | Hexaldehyde | 0.0108 | 1.595 | 2564 | 1.000 | BB | 0.50 |

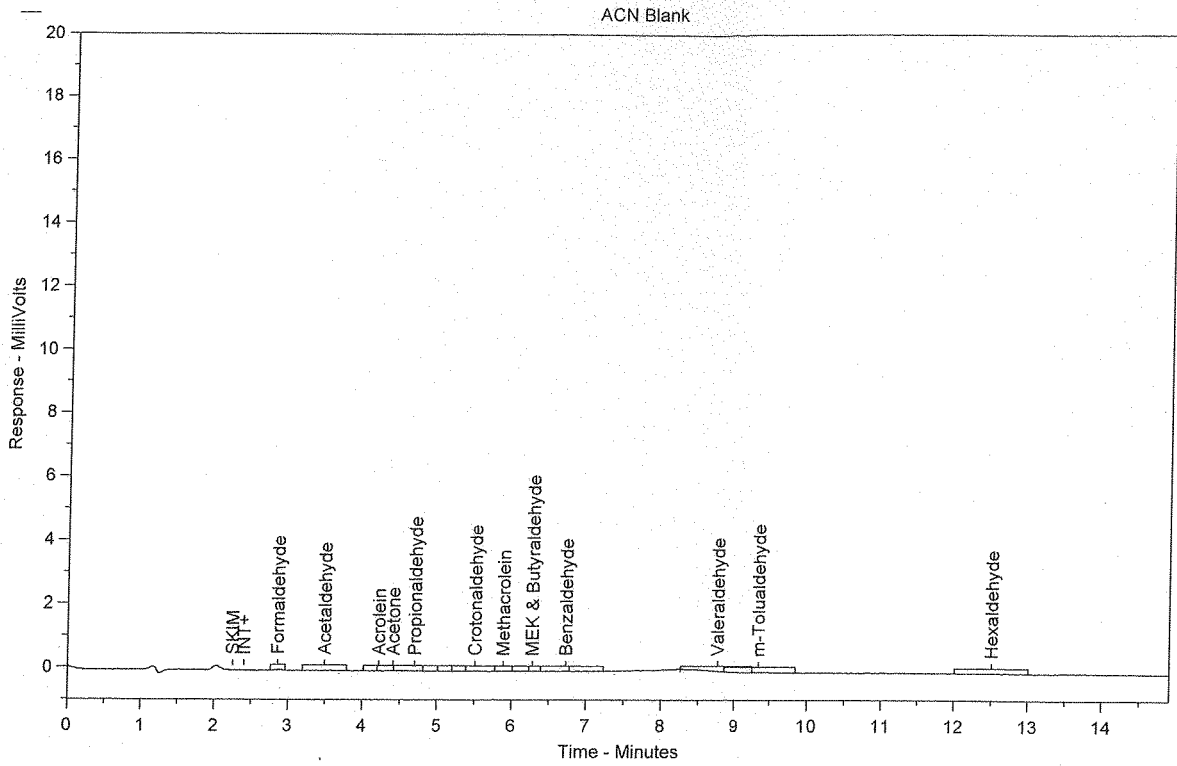
Total Area = 256394.2

Total Height = 23344.5

Total Amount = 0.6751645

MP
06/10/13

Chrom Perfect Chromatogram Report



Sample Name = ACN Blank

Instrument = HPLC #1

Raw File Name = C:\Chromperfect 2\Data\HPLC #1\2013\061013\061013.0012.RAW

Date Taken (end) = 6/10/2013 12:13:48 PM

Method File Name = C:\Chromperfect 2\Methods and Sequences\#1 HPLC #1\2013\011613 TO-11A.MET

Method Description=TO-11A Carbonyls

Calibration File Name = C:\Chromperfect 2\Methods and Sequences\#1 HPLC #1\2013\011613 TO-11A.CAL

Concentration Units = ug/ml

Run Time = 14.89889

Vial Number = 12

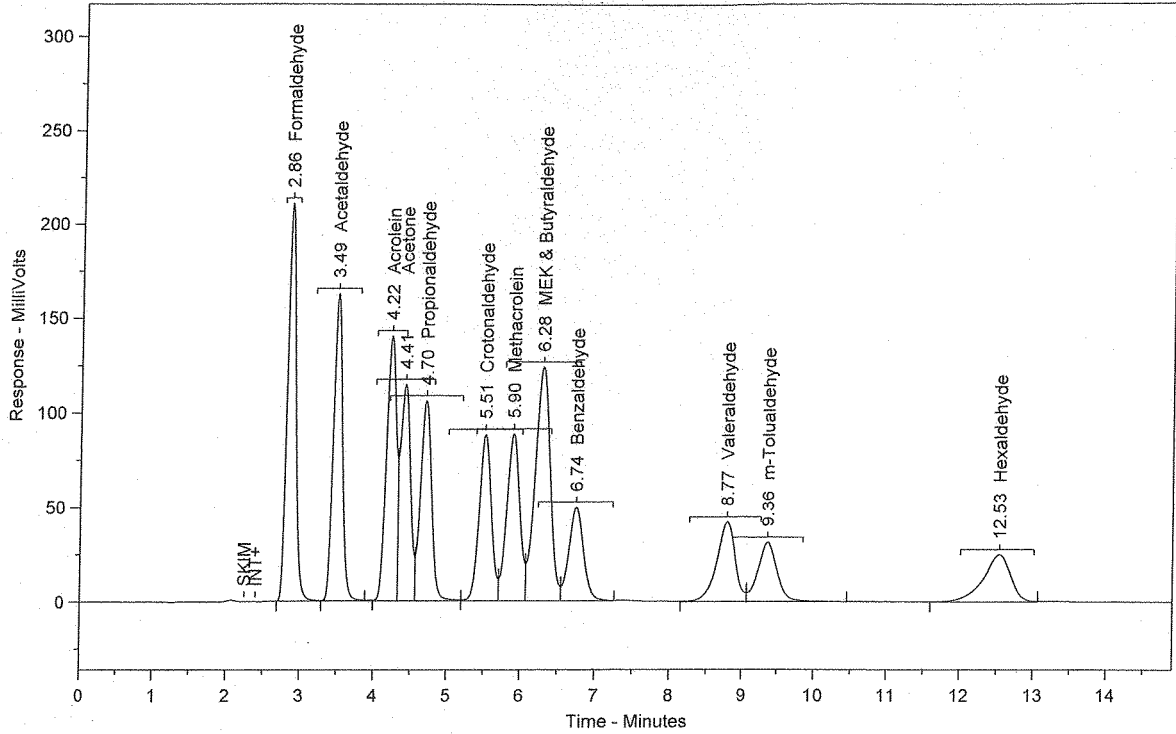
Injection Volume = 10

Dilution Factor = 1

| Peak # | Ret. Time | Name | Amount | Amt % | Area | Area % | Type | Width |
|----------------|-----------|------|------------------|-------|------------------|--------|------|-------|
| Total Area = 0 | | | Total Height = 0 | | Total Amount = 0 | | | |

Chrom Perfect Chromatogram Report

CCV 2.5 ug/mL (PS011613-01)



Sample Name = CCV 2.5 ug/mL (PS011613-01)

Instrument = HPLC #1

Raw File Name = C:\Chromperfect 2\Data\HPLC #1\2013\061013\061013.0013.RAW

Date Taken (end) = 6/10/2013 12:30:24 PM

Method File Name = C:\Chromperfect 2\Methods and Sequences\#1 HPLC #1\2013\011613 TO-11A.MET

Method Description=TO-11A Carbonyls

Calibration File Name = C:\Chromperfect 2\Methods and Sequences\#1 HPLC #1\2013\011613 TO-11A.CAL

Concentration Units = ug/ml

Run Time = 14.89889

Vial Number = 13

Injection Volume = 10

Dilution Factor = 1

| Peak # | Ret. Time | Name | Amount | Amt % | Area | Area % | Type | Width |
|--------|-----------|---------------------|--------|--------|---------|--------|------|-------|
| 1 | 2.86 | Formaldehyde | 2.6547 | 7.597 | 1687090 | 12.874 | SBB | 0.12 |
| 2 | 3.49 | Acetaldehyde | 2.6845 | 7.682 | 1406256 | 10.731 | TBV | 0.13 |
| 3 | 4.22 | Acrolein | 2.7266 | 7.803 | 1301995 | 9.935 | TVV | 0.18 |
| 4 | 4.41 | Acetone | 2.6904 | 7.699 | 1103712 | 8.422 | TVV | 0.16 |
| 5 | 4.70 | Propionaldehyde | 2.7035 | 7.736 | 1107701 | 8.453 | TVV | 0.16 |
| 6 | 5.51 | Crotonaldehyde | 2.6809 | 7.672 | 1016578 | 7.757 | TVV | 0.18 |
| 7 | 5.90 | Methacrolein | 2.6815 | 7.673 | 1075892 | 8.210 | TVV | 0.17 |
| 8 | 6.28 | MEK & Butyraldehyde | 5.3516 | 15.314 | 1724461 | 13.159 | TVV | 0.21 |
| 9 | 6.74 | Benzaldehyde | 2.6279 | 7.520 | 682019 | 5.204 | TVB | 0.21 |
| 10 | 8.77 | Valeraldehyde | 2.7110 | 7.758 | 760457 | 5.803 | BV | 0.27 |
| 11 | 9.36 | m-Tolualdehyde | 2.7285 | 7.808 | 594662 | 4.538 | VV | 0.28 |
| 12 | 12.53 | Hexaldehyde | 2.7041 | 7.738 | 643677 | 4.912 | VB | 0.38 |

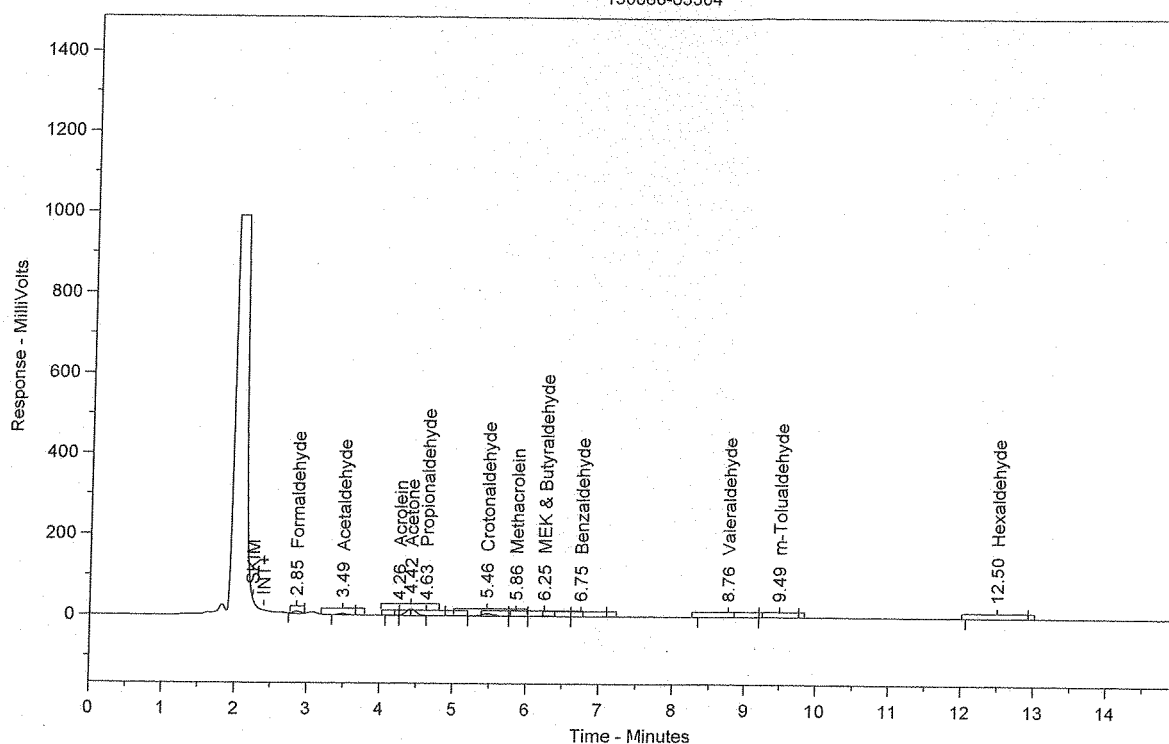
Total Area = 1.31045E+07

Total Height = 1181179

Total Amount = 34.94514

Chrom Perfect Chromatogram Report

130660-63304



Sample Name = 130660-63304

Instrument = HPLC #1

Raw File Name = C:\Chromperfect 2\Data\HPLC #1\2013\061013\061013.0014.RAW

Date Taken (end) = 6/10/2013 12:46:59 PM

Method File Name = C:\Chromperfect 2\Methods and Sequences\#1 HPLC #1\2013\011613 TO-11A.MET

Method Description=TO-11A Carbonyls

Calibration File Name = C:\Chromperfect 2\Methods and Sequences\#1 HPLC #1\2013\011613 TO-11A.CAL

Concentration Units = ug/ml

Run Time = 14.89889

Vial Number = 14

Injection Volume = 10

Dilution Factor = 1

| Peak # | Ret. Time | Name | Amount | Amt % | Area | Area % | Type | Width |
|--------|-----------|---------------------|--------|--------|--------|--------|------|-------|
| 1 | 2.85 | Formaldehyde | 0.0594 | 7.244 | 37780 | 11.216 | BB | 0.11 |
| 2 | 3.49 | Acetaldehyde | 0.0575 | 7.007 | 30122 | 8.943 | BB | 0.13 |
| 3 | 4.26 | Acrolein | 0.0023 | 0.284 | 1113 | 0.330 | BV | 0.02 |
| 4 | 4.42 | Acetone | 0.3748 | 45.669 | 153755 | 45.648 | SBB | 0.14 |
| 5 | 4.63 | Propionaldehyde | 0.0163 | 1.982 | 6664 | 1.978 | TBB | 0.12 |
| 6 | 5.46 | Crotonaldehyde | 0.1812 | 22.084 | 68724 | 20.404 | BV | 0.19 |
| 7 | 5.86 | Methacrolein | 0.0109 | 1.328 | 4372 | 1.298 | VV | 0.17 |
| 8 | 6.25 | MEK & Butyraldehyde | 0.0660 | 8.038 | 21257 | 6.311 | VV | 0.21 |
| 9 | 6.75 | Benzaldehyde | 0.0051 | 0.625 | 1331 | 0.395 | VB | 0.27 |
| 10 | 8.76 | Valeraldehyde | 0.0188 | 2.289 | 5269 | 1.564 | BV | 0.46 |
| 11 | 9.49 | m-Tolualdehyde | 0.0151 | .843 | 3297 | 0.979 | VB | 0.29 |
| 12 | 12.50 | Hexaldehyde | 0.0132 | 1.608 | 3142 | 0.933 | BB | 0.46 |

Total Area = 336824

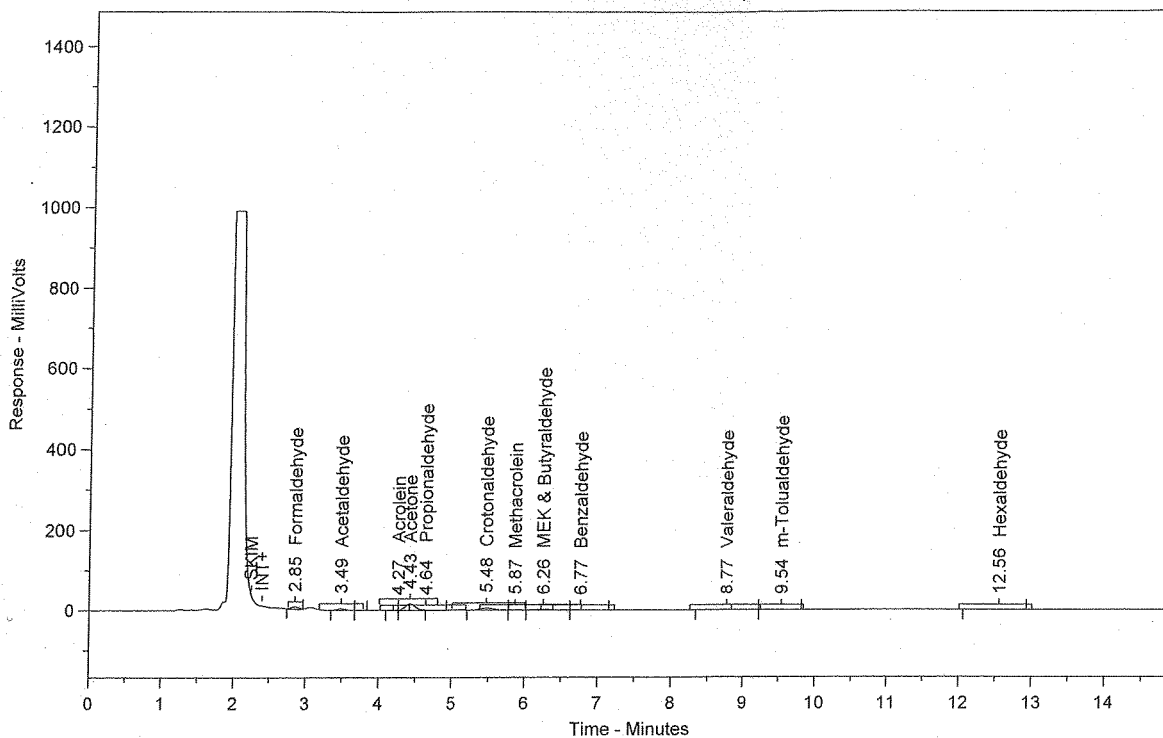
Total Height = 34387

Total Amount = 0.8206704

HP
06/10/13

Chrom Perfect Chromatogram Report

130660-63304 Dup



Sample Name = 130660-63304 Dup

Instrument = HPLC #1

Raw File Name = C:\Chromperfect 2\Data\HPLC #1\2013\061013\061013.0015.RAW

Date Taken (end) = 6/10/2013 1:03:34 PM

Method File Name = C:\Chromperfect 2\Methods and Sequences\#1 HPLC #1\2013\011613 TO-11A.MET

Method Description=TO-11A Carbonyls

Calibration File Name = C:\Chromperfect 2\Methods and Sequences\#1 HPLC #1\2013\011613 TO-11A.CAL

Concentration Units = ug/ml

Run Time = 14.89889

Vial Number = 15

Injection Volume = 10

Dilution Factor = 1

| Peak # | Ret. Time | Name | Amount | Amt % | Area | Area % | Type | Width |
|--------|-----------|---------------------|--------|--------|--------|--------|------|-------|
| 1 | 2.85 | Formaldehyde | 0.0590 | 7.130 | 37514 | 11.063 | BB | 0.11 |
| 2 | 3.49 | Acetaldehyde | 0.0571 | 6.898 | 29915 | 8.822 | BV | 0.13 |
| 4 | 4.27 | Acrolein | 0.0022 | 0.265 | 1048 | 0.309 | BV | 0.02 |
| 5 | 4.43 | Acetone | 0.3773 | 45.573 | 154788 | 45.648 | SBB | 0.14 |
| 6 | 4.64 | Propionaldehyde | 0.0169 | 2.045 | 6937 | 2.046 | TBB | 0.12 |
| 7 | 5.48 | Crotonaldehyde | 0.1785 | 21.557 | 67677 | 19.958 | BV | 0.19 |
| 8 | 5.87 | Methacrolein | 0.0104 | 1.262 | 4192 | 1.236 | VV | 0.17 |
| 9 | 6.26 | MEK & Butyraldehyde | 0.0756 | 9.131 | 24359 | 7.184 | VV | 0.22 |
| 10 | 6.77 | Benzaldehyde | 0.0050 | 0.607 | 1305 | 0.385 | VB | 0.30 |
| 11 | 8.77 | Valeraldehyde | 0.0174 | 2.096 | 4868 | 1.436 | BV | 0.48 |
| 12 | 9.54 | m-Tolualdehyde | 0.0142 | 1.720 | 3104 | 0.915 | VB | 0.27 |
| 13 | 12.56 | Hexaldehyde | 0.0142 | 1.717 | 3383 | 0.998 | BB | 0.41 |

Total Area = 339091.4

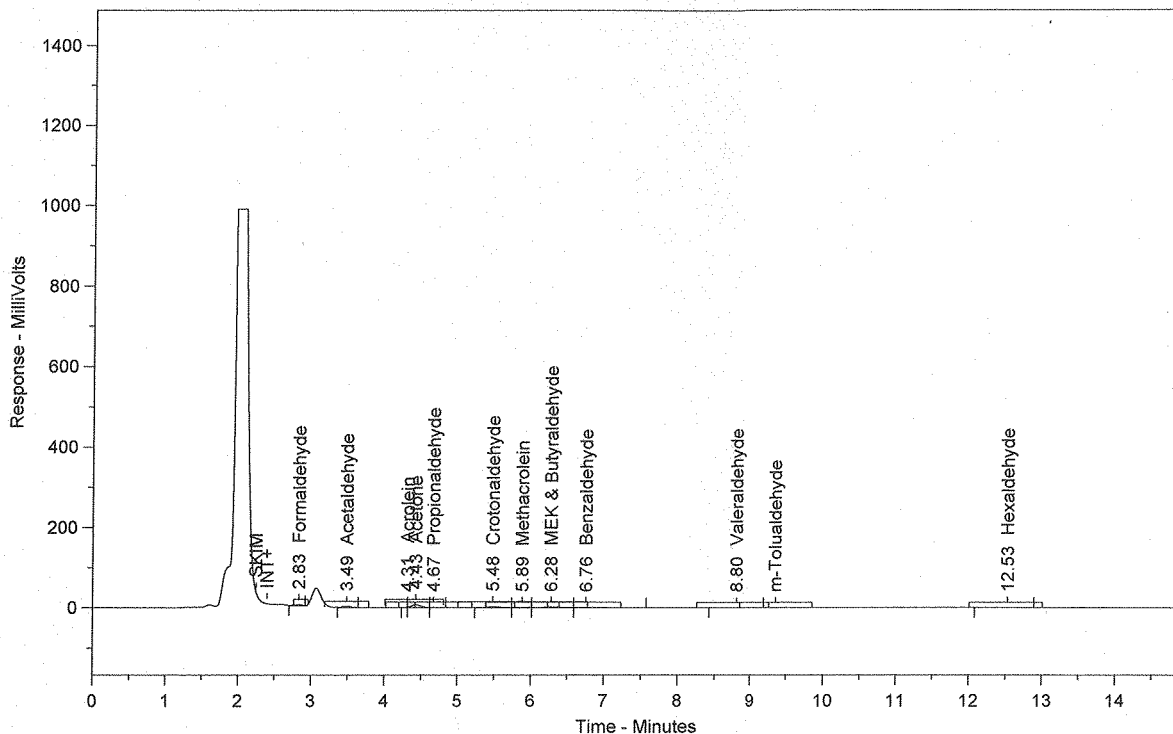
Total Height = 34279.14

Total Amount = 0.8279297

HP
06/10/13

Chrom Perfect Chromatogram Report

130660-63305



Sample Name = 130660-63305

Instrument = HPLC #1

Raw File Name = C:\Chromperfect 2\Data\HPLC #1\2013\06\10\13\061013.0016.RAW

Date Taken (end) = 6/10/2013 1:20:10 PM

Method File Name = C:\Chromperfect 2\Methods and Sequences\#1 HPLC #1\2013\01\16\13 TO-11A.MET

Method Description=TO-11A Carbonyls

Calibration File Name = C:\Chromperfect 2\Methods and Sequences\#1 HPLC #1\2013\01\16\13 TO-11A.CAL

Concentration Units = ug/ml

Run Time = 14.89889

Vial Number = 16

Injection Volume = 10

Dilution Factor = 1

| Peak # | Ret. Time | Name | Amount | Amt % | Area | Area % | Type | Width |
|--------|-----------|---------------------|--------|--------|-------|--------|------|-------|
| 1 | 2.83 | Formaldehyde | 0.0257 | 5.378 | 16327 | 8.928 | BB | 0.19 |
| 2 | 3.49 | Acetaldehyde | 0.0321 | 6.715 | 16806 | 9.190 | BB | 0.13 |
| 3 | 4.31 | Acrolein | 0.0028 | 0.586 | 1337 | 0.731 | BV | 0.02 |
| 4 | 4.43 | Acetone | 0.1561 | 32.674 | 64041 | 35.018 | VV | 0.14 |
| 5 | 4.67 | Propionaldehyde | 0.0134 | 2.802 | 5485 | 2.999 | VB | 0.14 |
| 6 | 5.48 | Crotonaldehyde | 0.0631 | 13.206 | 23925 | 13.082 | BV | 0.19 |
| 7 | 5.89 | Methacrolein | 0.0130 | 2.723 | 5219 | 2.854 | VV | 0.14 |
| 8 | 6.28 | MEK & Butyraldehyde | 0.0827 | 17.300 | 26633 | 14.563 | VV | 0.20 |
| 9 | 6.76 | Benzaldehyde | 0.0590 | 12.351 | 15315 | 8.374 | VB | 0.62 |
| 10 | 8.80 | Valeraldehyde | 0.0157 | 3.282 | 4399 | 2.405 | BB | 0.44 |
| 11 | 12.53 | Hexaldehyde | 0.0143 | 2.983 | 3393 | 1.855 | BB | 0.44 |

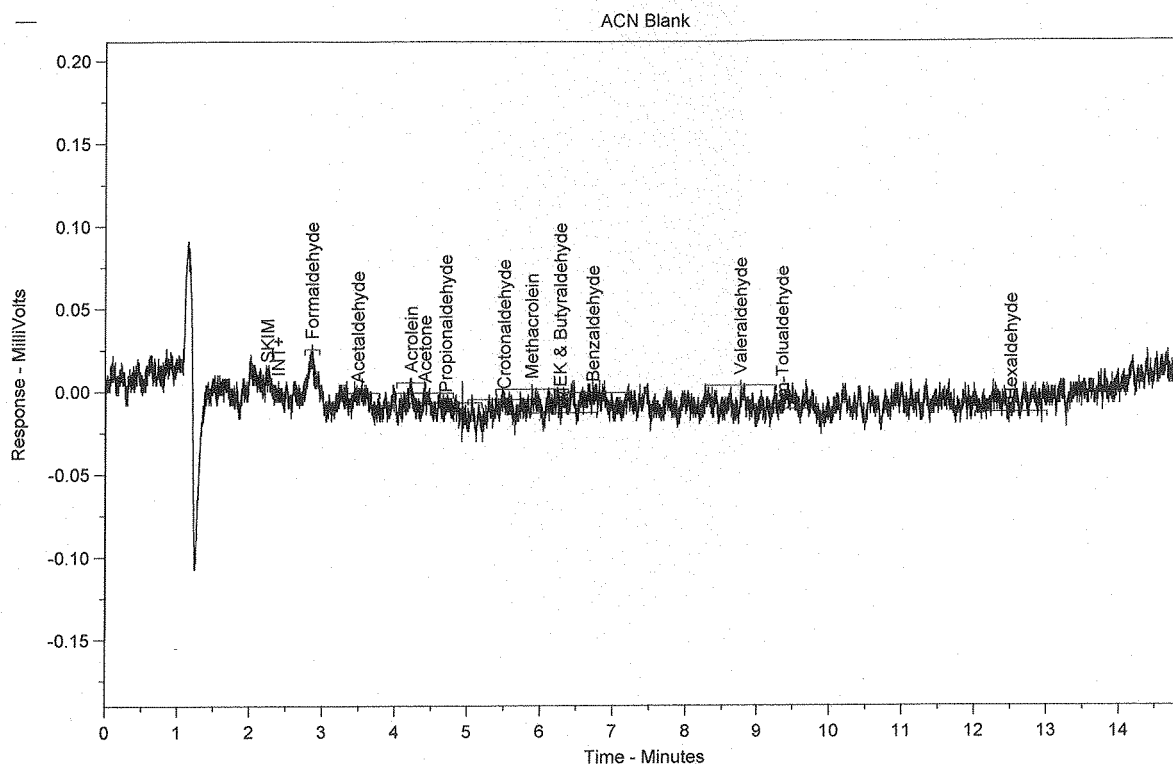
Total Area = 182879.7

Total Height = 17758.9

Total Amount = 0.4777627

HP
06/10/13

Chrom Perfect Chromatogram Report



Sample Name = ACN Blank

Instrument = HPLC #1

Raw File Name = C:\Chromperfect 2\Data\HPLC #1\2013\06\10\13\061013.0017.RAW

Date Taken (end) = 6/10/2013 2:57:56 PM

Method File Name = C:\Chromperfect 2\Methods and Sequences\#1 HPLC #1\2013\01\16\13 TO-11A.MET

Method Description=TO-11A Carbonyls

Calibration File Name = C:\Chromperfect 2\Methods and Sequences\#1 HPLC #1\2013\01\16\13 TO-11A.CAL

Concentration Units = ug/ml

Run Time = 14.89889

Vial Number = 17

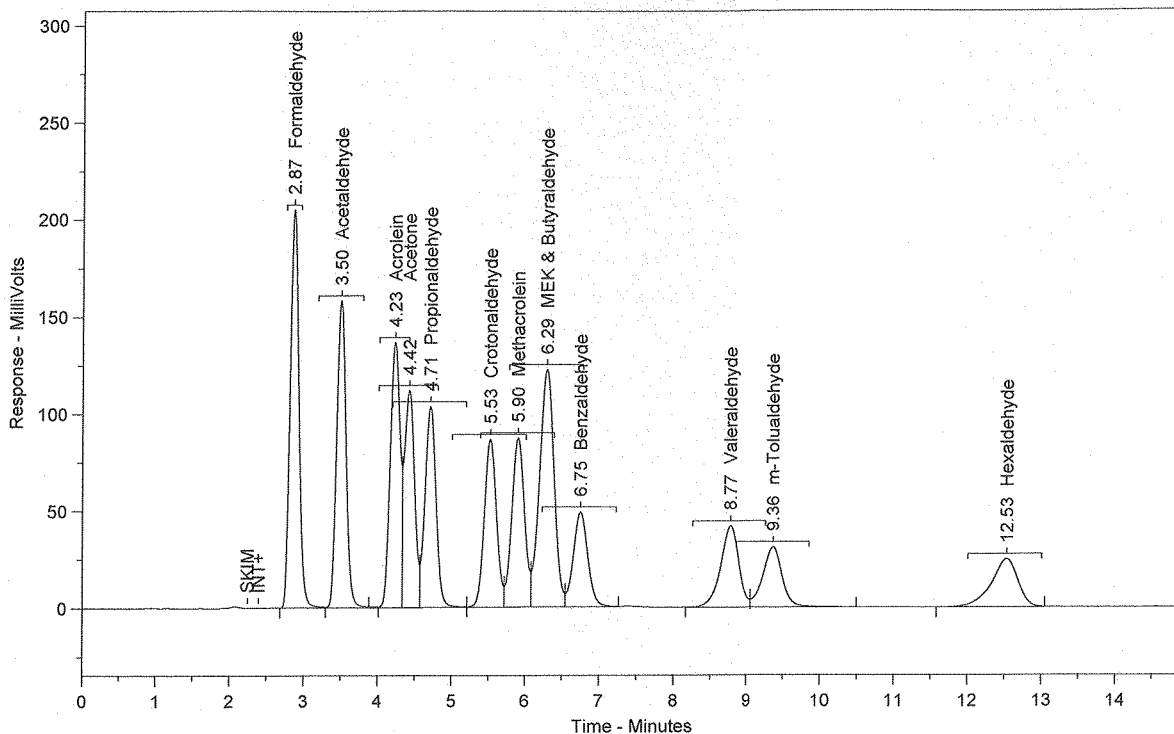
Injection Volume = 10

Dilution Factor = 1

| Peak # | Ret. Time | Name | Amount | Amt % | Area | Area % | Type | Width |
|----------------|-----------|------|------------------|-------|------------------|--------|------|-------|
| Total Area = 0 | | | Total Height = 0 | | Total Amount = 0 | | | |

Chrom Perfect Chromatogram Report

CCV 2.5 ug/mL (PS011613-01)



Sample Name = CCV 2.5 ug/mL (PS011613-01)

Instrument = HPLC #1

Raw File Name = C:\Chromperfect 2\Data\HPLC #1\2013\061013\061013.0018.RAW

Date Taken (end) = 6/10/2013 3:14:32 PM

Method File Name = C:\Chromperfect 2\Methods and Sequences\#1 HPLC #1\2013\011613 TO-11A.MET

Method Description=TO-11A Carbonyls

Calibration File Name = C:\Chromperfect 2\Methods and Sequences\#1 HPLC #1\2013\011613 TO-11A.CAL

Concentration Units = ug/ml

Run Time = 14.89889

Vial Number = 18

Injection Volume = 10

Dilution Factor = 1

| Peak # | Ret. Time | Name | Amount | Amt % | Area | Area % | Type | Width |
|--------|-----------|---------------------|--------|--------|---------|--------|------|-------|
| 1 | 2.87 | Formaldehyde | 2.6099 | 7.714 | 1658557 | 13.047 | SBB | 0.12 |
| 2 | 3.50 | Acetaldehyde | 2.6251 | 7.759 | 1375137 | 10.817 | TBV | 0.13 |
| 3 | 4.23 | Acrolein | 2.6356 | 7.790 | 1258518 | 9.900 | TVV | 0.17 |
| 4 | 4.42 | Acetone | 2.6201 | 7.744 | 1074866 | 8.455 | TVV | 0.16 |
| 5 | 4.71 | Propionaldehyde | 2.6090 | 7.711 | 1068966 | 8.409 | TVV | 0.16 |
| 6 | 5.53 | Crotonaldehyde | 2.5885 | 7.650 | 981545 | 7.721 | TVV | 0.18 |
| 7 | 5.90 | Methacrolein | 2.6014 | 7.689 | 1043754 | 8.211 | TVV | 0.17 |
| 8 | 6.29 | MEK & Butyraldehyde | 5.2008 | 15.371 | 1675877 | 13.183 | TVV | 0.20 |
| 9 | 6.75 | Benzaldehyde | 2.5507 | 7.539 | 661991 | 5.208 | TVB | 0.21 |
| 10 | 8.77 | Valeraldehyde | 2.6011 | 7.688 | 729627 | 5.740 | BV | 0.26 |
| 11 | 9.36 | m-Tolualdehyde | 2.6173 | 7.736 | 570418 | 4.487 | VB | 0.28 |
| 12 | 12.53 | Hexaldehyde | 2.5750 | 7.611 | 612945 | 4.822 | BB | 0.37 |

Total Area = 1.27122E+07

Total Height = 1155552

Total Amount = 33.83426

HP
06/10/13

Chrom Perfect Sequence File

File Name = C:\Chromperfect 2\Methods and Sequences\#1 HPLC #1\2013\061013 (TO-11).SEQ

File Date = 6/7/2013 2:52:28 PM

Analyst=

| Entry # | Raw File Name | Method File Name | Sample Name | Vial # | DF |
|---------|-----------------|-------------------|--|--------|----|
| 1 | 061013.0001.raw | 011613 TO-11A.MET | ACN Blank | 1 | 1 |
| 2 | 061013.0002.raw | 011613 TO-11A.MET | CCV 2.5 ug/mL (PS011613-01) | 2 | 1 |
| 3 | 061013.0003.raw | 011613 TO-11A.MET | SS 1.25 ppm (PS080412-01) | 3 | 1 |
| 4 | 061013.0004.raw | 011613 TO-11A.MET | TO-11 Method Blank | 4 | 1 |
| 5 | 061013.0005.raw | 011613 TO-11A.MET | LCS Blank | 5 | 1 |
| 6 | 061013.0006.raw | 011613 TO-11A.MET | LCS 1.25ug/mL (PS011013-01) | 6 | 1 |
| 7 | 061013.0007.raw | 011613 TO-11A.MET | MS 130660-63302 1.25 ppm [(PS011613-01x2] | 7 | 1 |
| 8 | 061013.0008.raw | 011613 TO-11A.MET | MSD 130660-63302 1.25 ppm [(PS011613-01x2] | 8 | 1 |
| 9 | 061013.0009.raw | 011613 TO-11A.MET | 130660-63302 | 9 | 1 |
| 10 | 061013.0010.raw | 011613 TO-11A.MET | 130660-63302 Dup | 10 | 1 |
| 11 | 061013.0011.raw | 011613 TO-11A.MET | 130660-63303 | 11 | 1 |
| 12 | 061013.0012.raw | 011613 TO-11A.MET | ACN Blank | 12 | 1 |
| 13 | 061013.0013.raw | 011613 TO-11A.MET | CCV 2.5 ug/mL (PS011613-01) | 13 | 1 |
| 14 | 061013.0014.raw | 011613 TO-11A.MET | 130660-63304 | 14 | 1 |
| 15 | 061013.0015.raw | 011613 TO-11A.MET | 130660-63304 Dup | 15 | 1 |
| 16 | 061013.0016.raw | 011613 TO-11A.MET | 130660-63305 | 16 | 1 |
| 17 | 061013.0017.raw | 011613 TO-11A.MET | ACN Blank | 17 | 1 |
| 18 | 061013.0018.raw | 011613 TO-11A.MET | CCV 2.5 ug/mL (PS011613-01) | 18 | 1 |